

**DYER BROWN**



**NATIONAL  
DEVELOPMENT**

Dyer Brown & Associates, Inc.  
dyerbrown.com

T 617 426 1680  
F 617 426 2187

One Winthrop Square  
Boston, MA 02110-1209

976 Brady Avenue, NW #100  
Atlanta, GA 30318

## 300 A Street National Development - Fort Point Landmarks Review

July 15, 2021

—

### PREPARED BY

Dyer Brown  
One Winthrop Square  
Boston, MA 02110



## **TABLE OF CONTENTS**

### **01 ROOF PLANS**

Existing Unit Locations

Proposed New Unit Locations

### **02 ROOFTOP UNITS**

Existing Conditions Images

Existing + Proposed Plans

Elevations + Sections

Mockups Images

Cutsheet

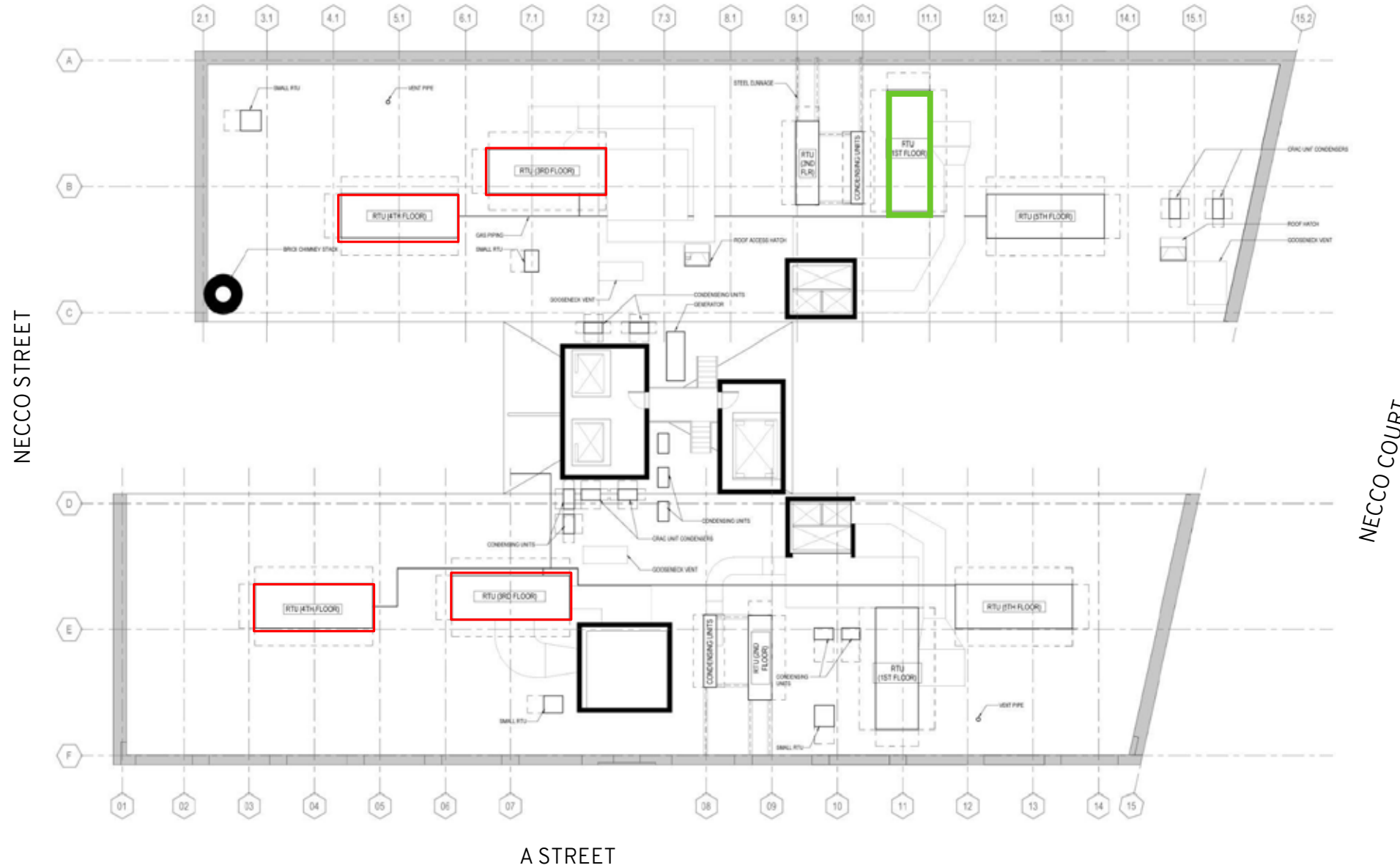


**NYERBRUWN®**

**SECTION 01**  
—  
**ROOF PLANS**

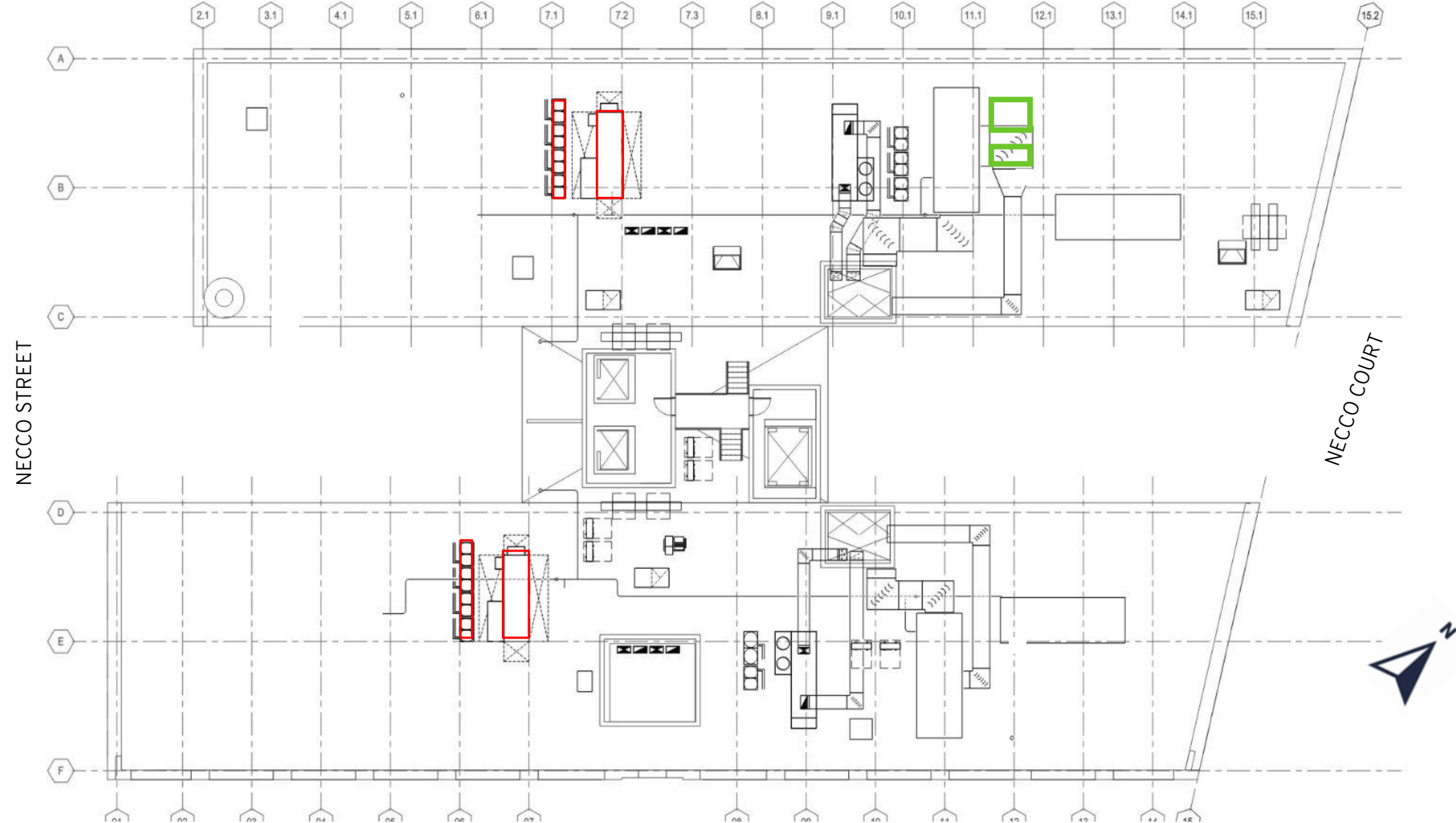


- EXISTING RTU'S TO BE REPLACED (PREVIOUSLY APPROVED)
- EXISTING RTU TO BE DEMOLISHED AND REPLACED



# ROOF PLAN: EXISTING UNITS

- PROPOSED RTU (AND ASSOCIATED CONDENSERS) LOCATION (PREVIOUSLY APPROVED)
- PROPOSED OUTSIDE AIR UNIT AND CONDENSER LOCATION



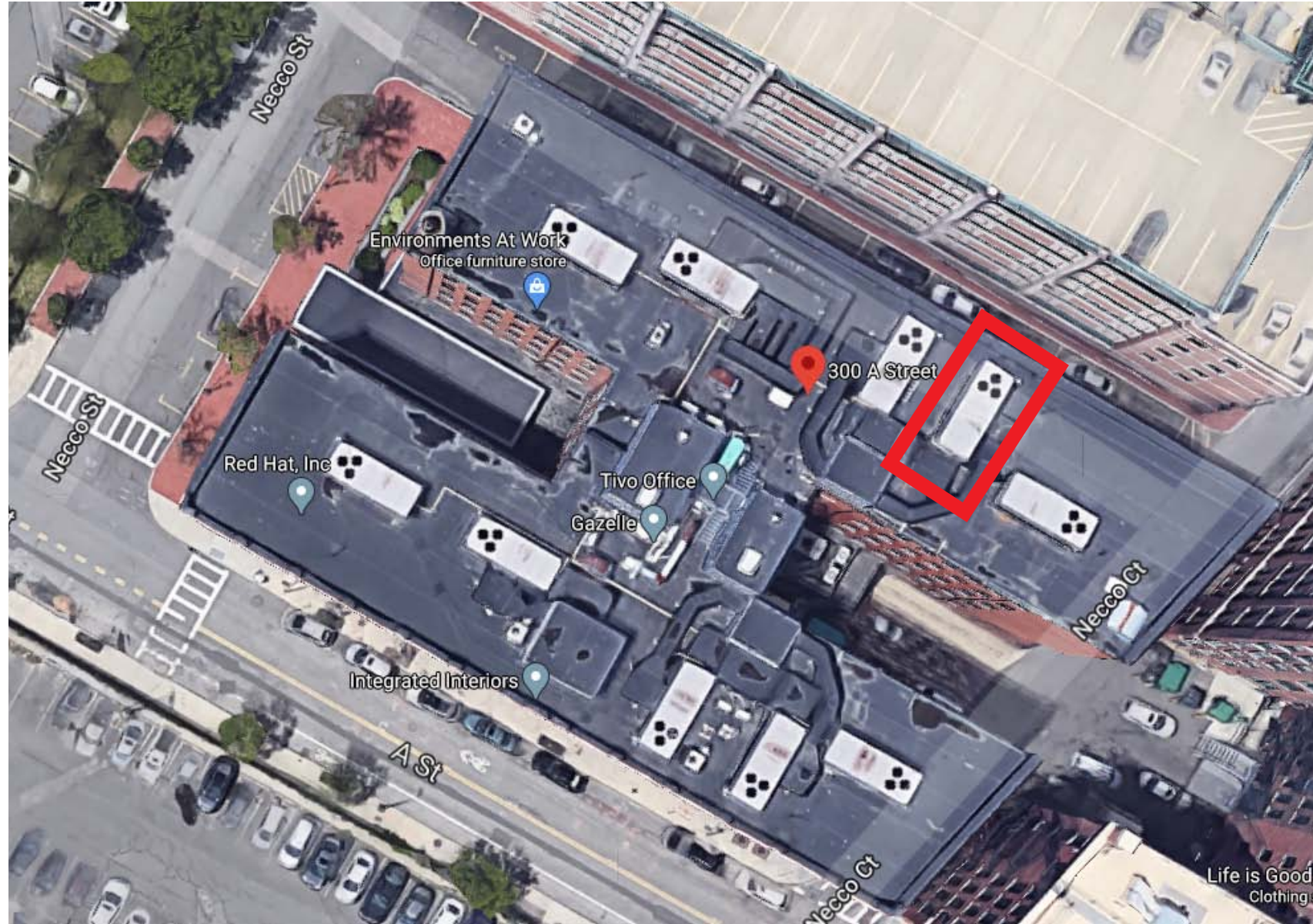
# ROOF PLAN: PROPOSED NEW ROOFTOP UNITS



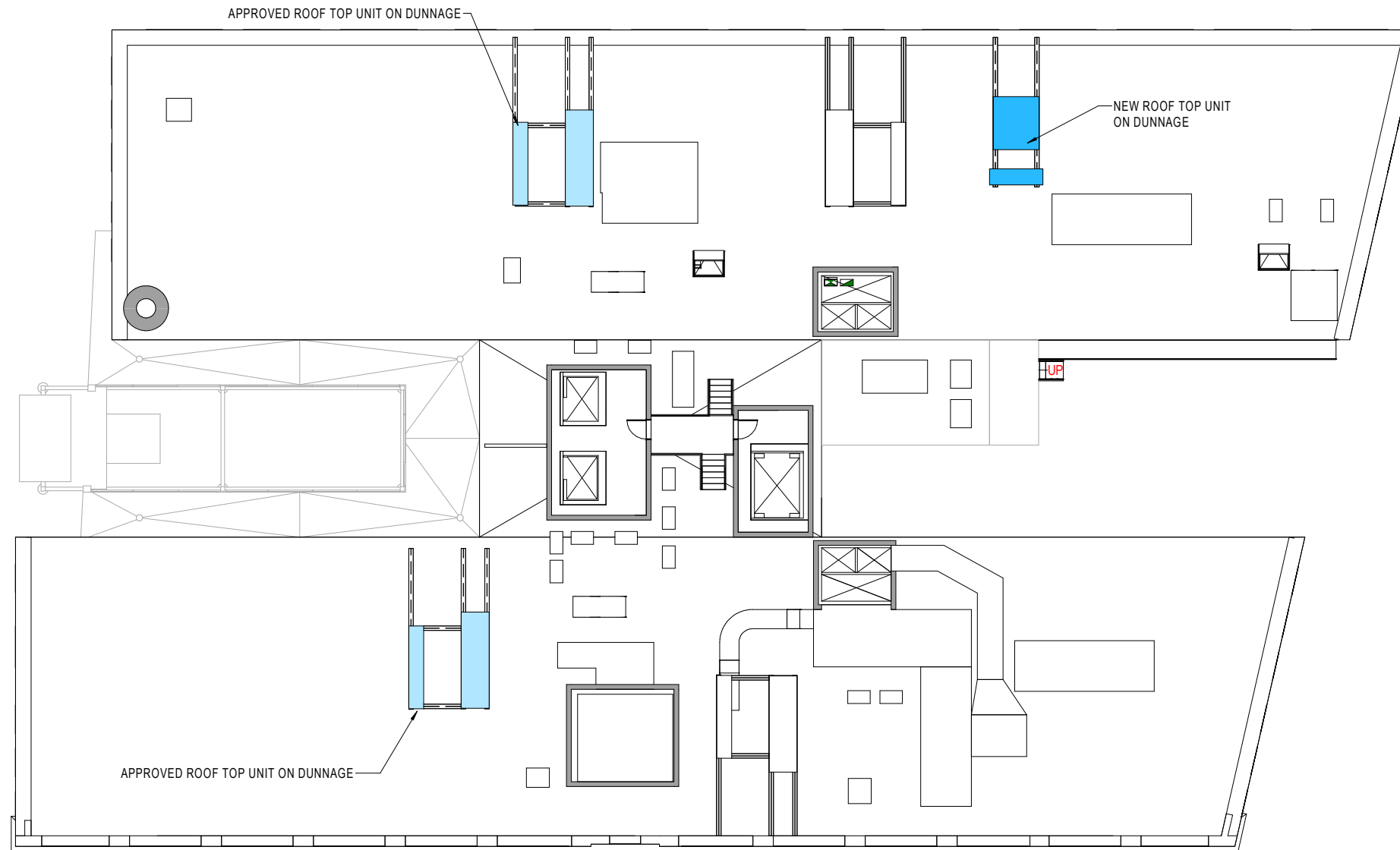
**NYERBRUWN<sup>®</sup>**

**SECTION 02**  
—  
**ROOFTOP UNITS**





# ROOFTOP UNIT: CURRENT LOCATION SITE MAP



# ROOF PLAN: APPROVED NEW ROOFTOP UNITS

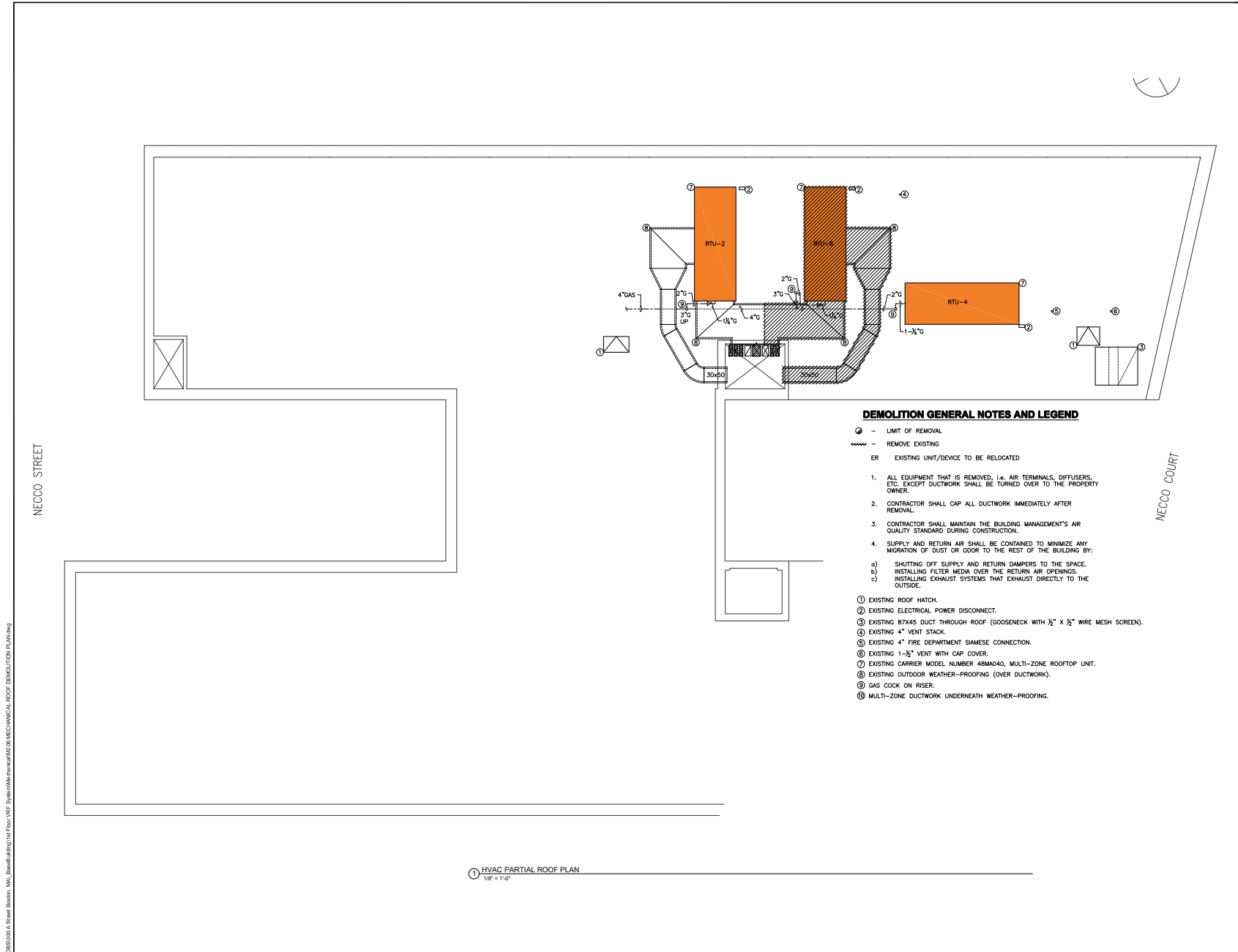




## ROOFTOP UNIT DUCTWORK: CURRENT LOCATION EXISTING CONDITIONS IMAGES



**Commercial Construction Consulting, Inc.**  
 313 Congress Street  
 Boston, MA 02215  
 617.330.9390  
 617.330.9383 fax  
 info@ccsboston.com  
 Consulting Engineers/Construction Managers



ADDENDUMS

No.	Date	Description	By

1ST FLOOR VRF SYSTEM  
300 A STREET, BOSTON  
MA

Project

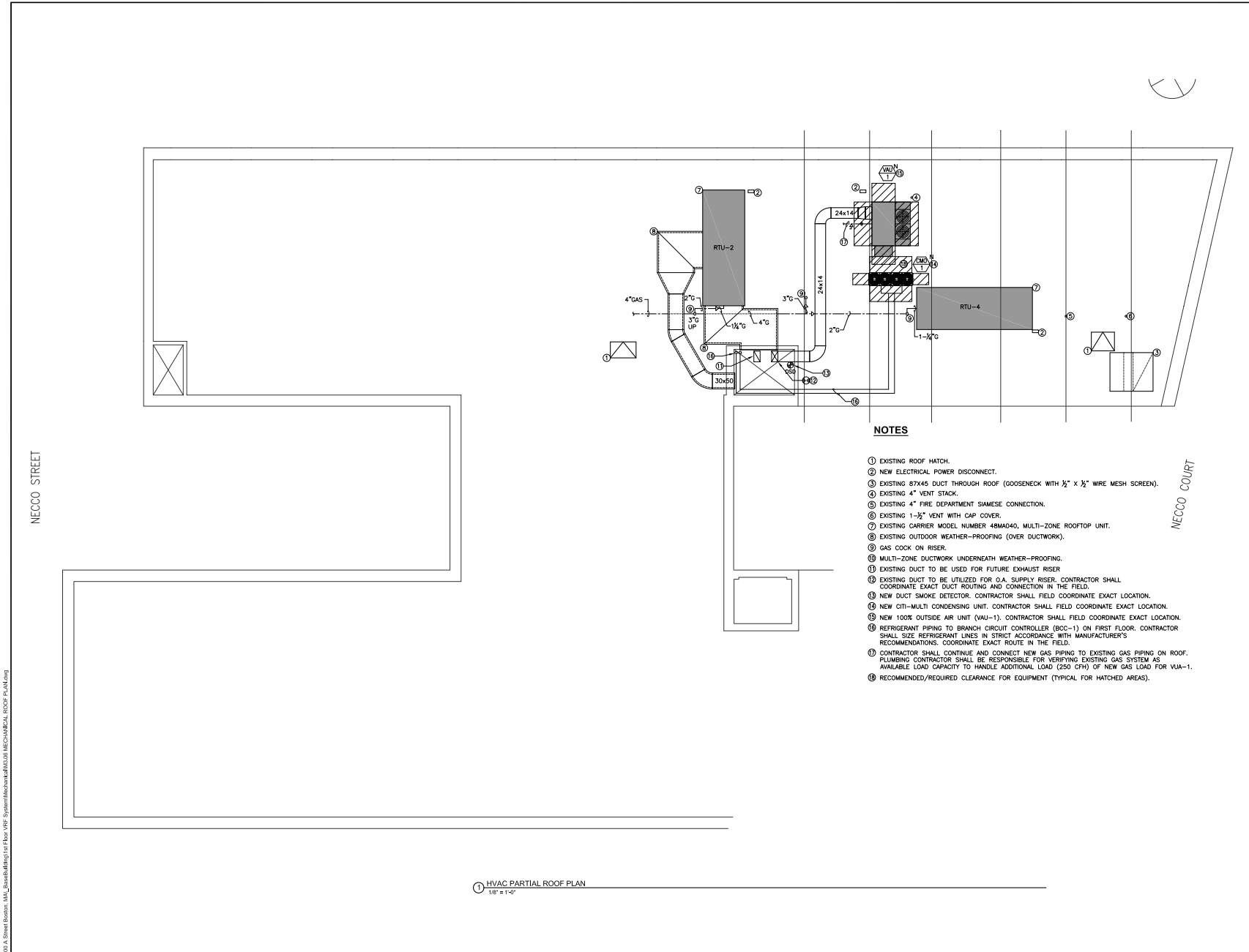
MECHANICAL  
ROOF DEMOLITION  
PLAN

Drawing Title

Project No. 21772	Checked BSK	Date 12/8/2019
Drawn ZDA	Approved MWF	Scale 1/8" = 1' 0"
Drawing No. <b>M2.06</b>		

# LOADING DOCK UNIT: MECHANICAL ROOF DEMOLITION PLAN (NOT TO SCALE)

**Commercial Construction Consulting, Inc.**  
 313 Congress Street  
 Boston, MA 02210  
 617.330.9399  
 617.330.9383 fax  
 hfc@cccboston.com  
 Consulting Engineers/Construction Managers



**NOTES**

- ① EXISTING ROOF HATCH.
- ② NEW ELECTRICAL POWER DISCONNECT.
- ③ EXISTING 87X45 DUCT THROUGH ROOF (GOOSENECK WITH 1/2" X 1/2" WIRE MESH SCREEN).
- ④ EXISTING 4" VENT STACK.
- ⑤ EXISTING 4" FIRE DEPARTMENT SIAMESE CONNECTION.
- ⑥ EXISTING 1-1/2" VENT WITH CAP COVER.
- ⑦ EXISTING CARRIER MODEL NUMBER 48M4040, MULTI-ZONE ROOFTOP UNIT.
- ⑧ EXISTING OUTDOOR WEATHER-PROOFING (OVER DUCTWORK).
- ⑨ GAS COCK ON RISER.
- ⑩ MULTI-ZONE DUCTWORK UNDERNEATH WEATHER-PROOFING.
- ⑪ EXISTING DUCT TO BE USED FOR FUTURE EXHAUST RISER
- ⑫ EXISTING DUCT TO BE UTILIZED FOR O.A. SUPPLY RISER. CONTRACTOR SHALL COORDINATE EXACT DUCT ROUTING AND CONNECTION IN THE FIELD.
- ⑬ NEW DUCT SMOKE DETECTOR. CONTRACTOR SHALL FIELD COORDINATE EXACT LOCATION.
- ⑭ NEW CMT-MULTI CONDENSING UNIT. CONTRACTOR SHALL FIELD COORDINATE EXACT LOCATION.
- ⑮ NEW 100% OUTSIDE AIR UNIT (VUA-1). CONTRACTOR SHALL FIELD COORDINATE EXACT LOCATION.
- ⑯ REFRIGERANT PIPING TO BRANCH CIRCUIT CONTROLLER (BCC-1) ON FIRST FLOOR. CONTRACTOR SHALL SIZE REFRIGERANT LINES IN STRICT ACCORDANCE WITH MANUFACTURER'S RECOMMENDATIONS. COORDINATE EXACT ROUTE IN THE FIELD.
- ⑰ CONTRACTOR SHALL CONTINUE AND CONNECT NEW GAS PIPING TO EXISTING GAS PIPING ON ROOF. PLUMBING CONTRACTOR SHALL BE RESPONSIBLE FOR VERIFYING EXISTING GAS SYSTEM AS AVAILABLE LOAD CAPACITY TO HANDLE ADDITIONAL LOAD (250 CFH) OF NEW GAS LOAD FOR VUA-1.
- ⑱ RECOMMENDED/REQUIRED CLEARANCE FOR EQUIPMENT (TYPICAL FOR HATCHED AREAS).

ADDENDUMS			
No.	Date	Description	By
A	9/5/20	CMO-1 Landlord Relocation	

**1ST FLOOR VRF SYSTEM  
 300 A STREET, BOSTON  
 MA**

**MECHANICAL  
 ROOF PLAN**

Project No. 21772	Checked BSK	Date 12/6/2019
Drawn ZDA	Approved MNF	Scale 1/8" = 1' 0"
Drawing No. <b>M3.06</b>		

**NEW ROOF ELECTRICAL: ROOF POWER PLAN (NOT TO SCALE)**



CITYMULTI®

Outdoor Unit: **20-TON PURY-EP240YSNU-A (-BS)**  
(Consists of Two PURY-EP120YNU-A (-BS) and One CMY-R200NCBK Twinning Kit)



Job Name:  
System Reference:

Date:



OUTDOOR VRF HEAT PUMP WITH HEAT RECOVERY SYSTEM

**UNIT OPTION**

- Standard Model ..... PURY-EP240YSNU-A
- Seacoast (BS) Model ..... PURY-EP240YSNU-A-BS

**ACCESSORIES**

- Twinning Kit (required) ..... CMY-R200NCBK
- Joint Kit ..... for details see Pipe Accessories Submittals
- BC Controller (required) ..... for details see BC Controller Submittals
- Low Ambient Kit ..... for details see Low Ambient Kit Submittal
- Snow/Hail Guards Kit ..... for details see Snow/Hail Guards Kit Submittal
- Panel Heater Kit ..... for details see Panel Heater Kit Submittal

Specifications		System	Module 1	Module 2
Unit Type		PURY-EP240YSNU-A (-BS)	PURY-EP120YNU-A (-BS)	PURY-EP120YNU-A (-BS)
Nominal Cooling Capacity	Btu/h	240,000	120,000	120,000
Nominal Heating Capacity	Btu/h	270,000	135,000	135,000
Guaranteed Operating Range *1	Cooling (Outdoor) *2	Refer to Module Data	23~128°F (-5~52°C)	
	Heating (Outdoor) *3		-13~60°F (-25~15.5°C)	
Extended Operating Range *4	Heating (Outdoor)	Refer to Module Data	-25~60°F (-31.5~15.5°C)	
	Heating (Outdoor)		-25~60°F (-31.5~15.5°C)	
External Dimensions (H x W x D)	In. (mm)	Refer to Module Data	71-5/8 x 48-7/8 x 29-5/32 (1,818 x 1,240 x 740)	71-5/8 x 48-7/8 x 29-5/32 (1,818 x 1,240 x 740)
Net Weight	Lbs. (kg)	1314 (596)	657 (298)	657 (298)
External Finish		Refer to Module Data	Pre-coated galvanized steel sheet (+powder coating for -BS type) <MUNSELL 5Y 8/1>	
Electrical Power Requirements	Voltage, Phase, Hertz	Refer to Module Data	3-phase 3-wire 460 V ±10% 60 Hz	
Minimum Circuit Ampacity (MCA)	A		19	19
Maximum Overcurrent Protection (MOP)	A		30	30
Recommended Fuse Size	A		30	30
Recommended Minimum Wire Size	AWG (mm)		10 (5.3)	10 (5.3)
Short-circuit Current Rating (SCCR)	kA		5	5
Piping Diameter (Brazed) (In. / mm)	Liquid (High Pressure)	7/8 (22.2) Brazed (1-1/8 (28.58) Brazed for the part that exceeds 65 m)		
	Gas (Low Pressure)	1-3/8 (34.93) Brazed		
Max. Total Refrigerant Line Length	FL	3,836	Refer to System Data	
Max. Refrigerant Line Length (Between ODU & IDU)	FL	541		
Max. Control Wiring Length	FL	1,640		
Indoor Unit	Total Capacity	50~150% of outdoor unit capacity	Refer to System Data	
	Model / Quantity	P05~P96/2~50		
Sound Pressure Levels	dB(A)	63.0/65.0	Refer to System Data	
Sound Power Levels	dB(A)	83.0/83.5		
Fan	Type x Quantity	Refer to Module Data	Propeller fan x 2	Propeller fan x 2
	Airflow Rate		CFM	8,300
	External Static Pressure	In. WG	Selectable, 0, 0.12, 0.24, 0.32 in.WG; factory set to 0 in.WG	
Compressor Operating Range		7.5% to 100%	Refer to System Data	
Compressor Type x Quantity		Refer to Module Data	Inverter scroll hermetic compressor x 1	Inverter scroll hermetic compressor x 1
Refrigerant		Refer to Module Data	R410A 17 lbs + 10 oz (8.0 kg)	R410A 17 lbs + 10 oz (8.0 kg)
Protection Devices	High Pressure	Refer to Module Data	High pressure sensor, High pressure switch at 4.15 MPa (601 psi)	
	Inverter Circuit (Comp. / Fan)		Over-heat protection, Over-current protection	
	Fan Motor		Over-current protection	
AHRI Ratings (Ducted/Non-Ducted)	EER	11.7 / 12.2	Refer to System Data	
	IEER	23.9 / 27.4		
	COP	3.46 / 3.58		
	SCHE	22.9 / 26.8		

NOTES:  
Nominal cooling conditions (Test conditions are based on AHRI 1230) Indoor: 80°F DB, 67°F WB, (26.7°C DB, 19.4°C WB). Outdoor: 95°F DB, (35°C DB).  
Nominal heating conditions (Test conditions are based on AHRI 1230) Indoor: 70°F DB, (21.1°C DB), Outdoor: 47°F DB, 43°F WB, (8.3°C DB, 1°C WB).  
\*1 Each individual module requires a separate electrical connection. Refer to electrical data for each individual module.

- Harsh weather environments may demand performance enhancing equipment. Ask your Mitsubishi Electric representative for more details about your region.
- For details on extended cooling operation range down to -10° F DB, see Low Ambient Kit Submittal.
- When applying product below -4° F, consult your design engineer for cold climate application best practices, including the use of a backup source for heating.
- Unit will continue to operate in extended operating range, but capacity is not guaranteed.

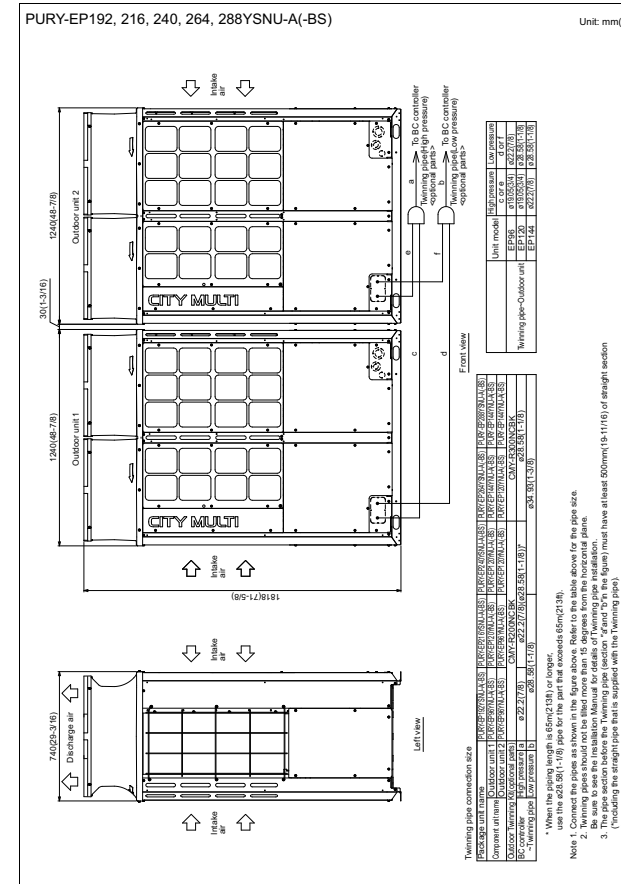
Specifications are subject to change without notice.

© 2019 Mitsubishi Electric Trane HVAC US LLC. All rights reserved.

Outdoor Unit: **PURY-EP240YSNU-A (-BS) – DIMENSIONS**

2. EXTERNAL DIMENSIONS

R2-Series (High efficiency)



- NOTES:
- SEACOAST PROTECTION
  - Anti-corrosion Protection: A coating treatment is applied to condenser coil for protection from air contaminants.
  - Standard: Salt Spray Test Method - no unusual rust development to 480 hours.
  - Sea Coast (BS): Salt Spray Test Method (JRA 9002) - no unusual rust development to 960 hours.

Specifications are subject to change without notice.

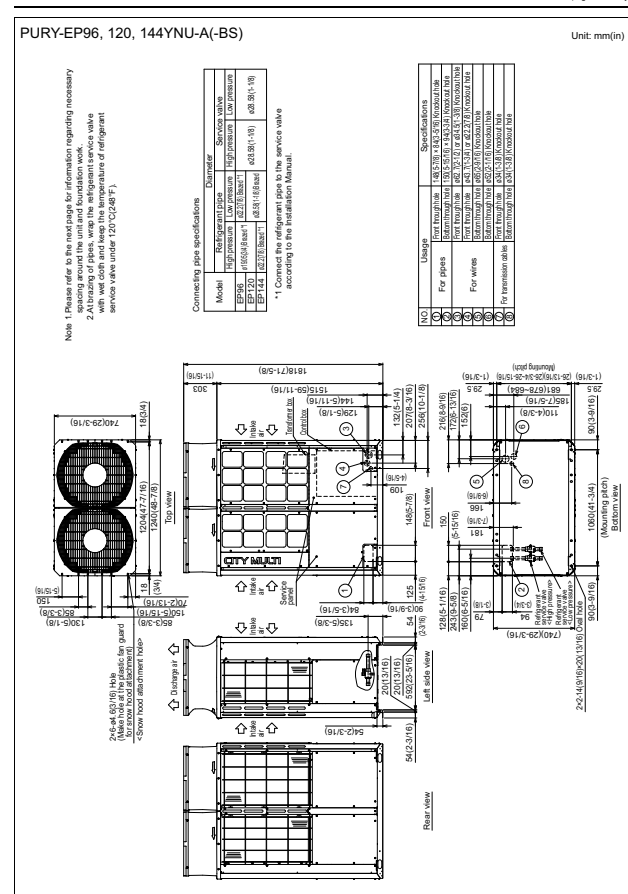
© 2019 Mitsubishi Electric Trane HVAC US LLC. All rights reserved.

# HEAT PUMP UNITS: CUTSHEETS

Modules 1 and 2: PURY-EP120YNU-A (-BS) – DIMENSIONS

Twinning Kit: CMY-R200NCBK

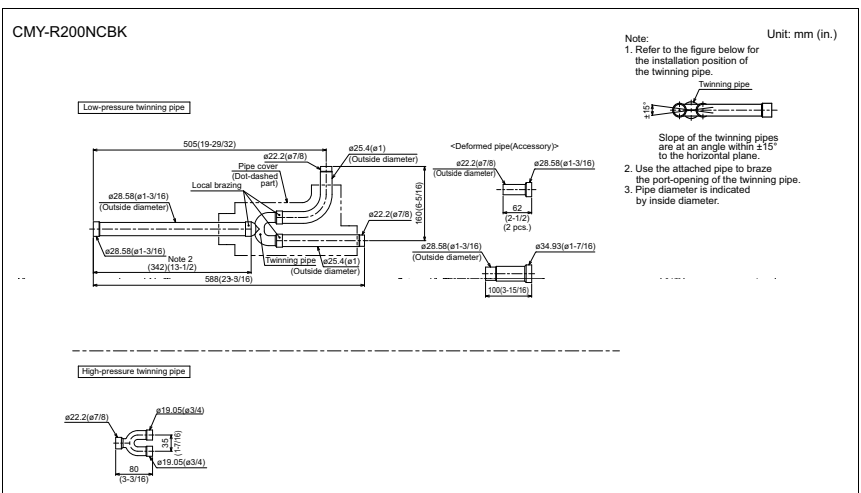
2. EXTERNAL DIMENSIONS



NOTES:  
 SEACOAST PROTECTION  
 • Anti-corrosion Protection: A coating treatment is applied to condenser coil for protection from air contaminants.  
 • Standard: Salt Spray Test Method - no unusual rust development to 480 hours.  
 • Sea Coast (BS): Salt Spray Test Method (JRA 9002) - no unusual rust development to 960 hours.

Specifications are subject to change without notice.

© 2019 Mitsubishi Electric Trane HVAC US LLC. All rights reserved.



FORM# PUHY-EP96TNU-A (-BS) - 201907

Specifications are subject to change without notice.

© 2019 Mitsubishi Electric Trane HVAC US LLC. All rights reserved.

HEAT PUMP UNITS: CUTSHEETS




**NYERBRUWN®**

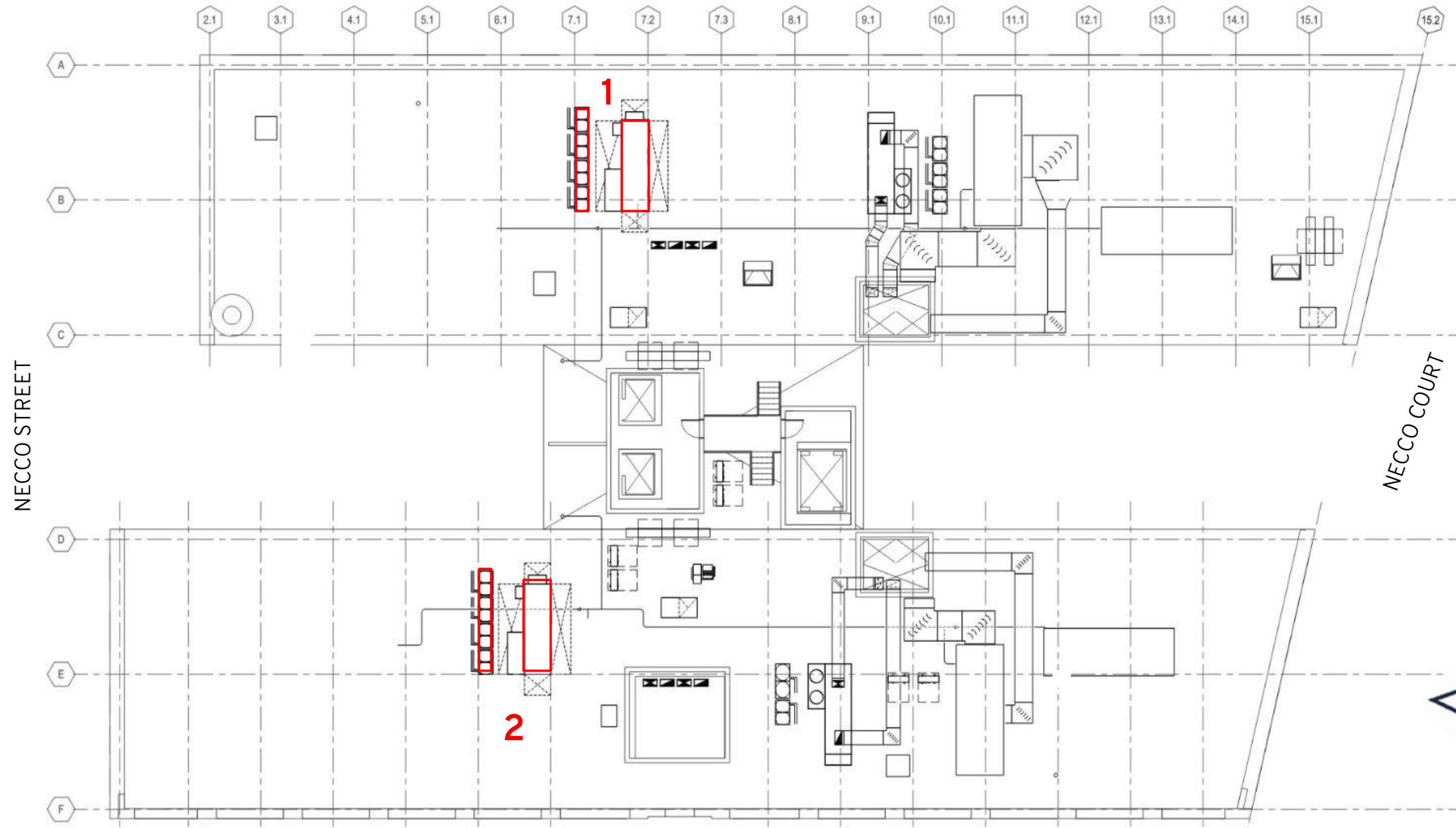
**SECTION 03**  
—  
**ROOFTOP UNITS**



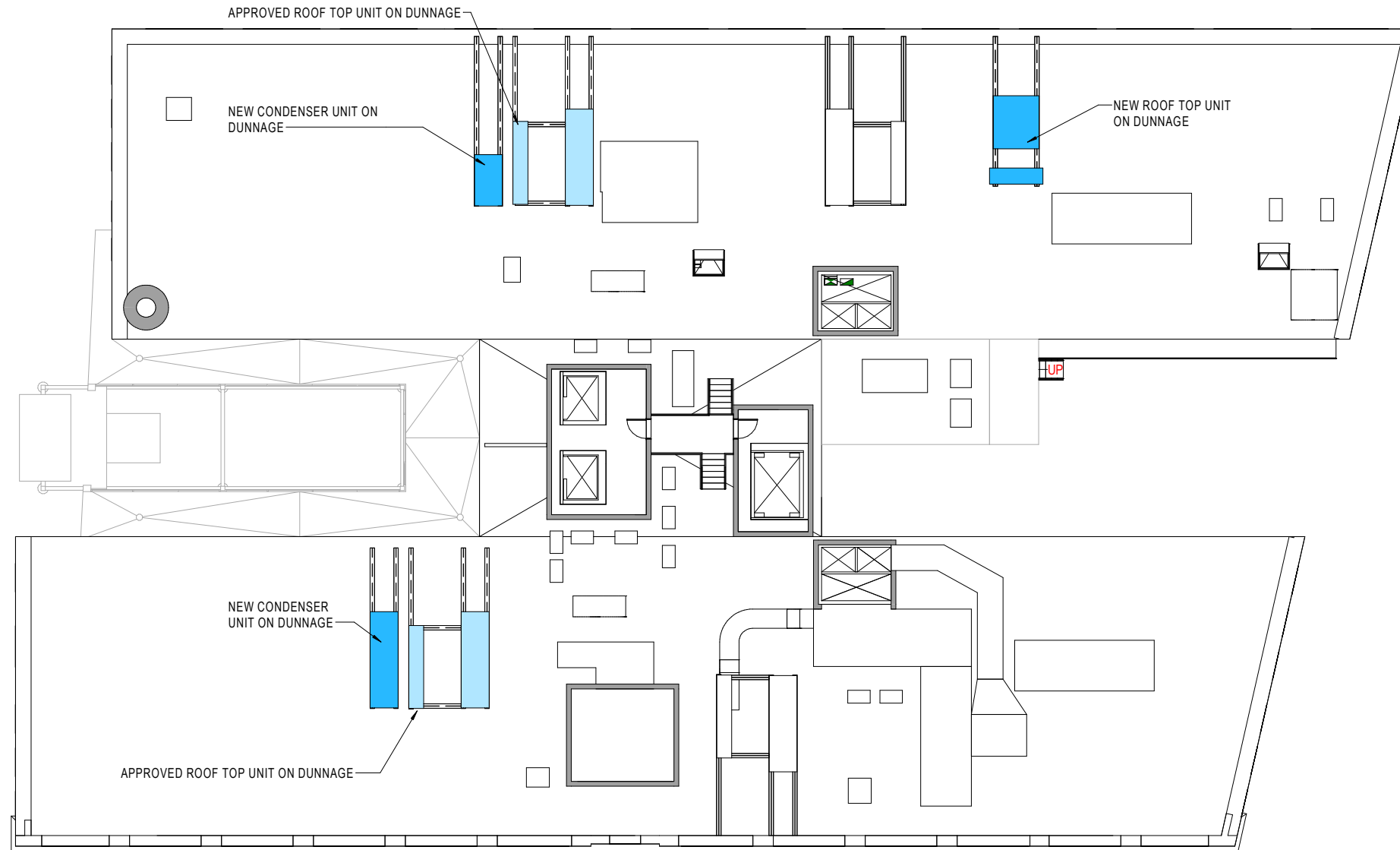


# ROOFTOP UNITS: EXISTING CONDITIONS PHOTOS

 Proposed RTU (and associated condensers) Location



# ROOFTOP UNITS: PREVIOUSLY APPROVED ROOFTOP EQUIPMENT REPLACEMENT

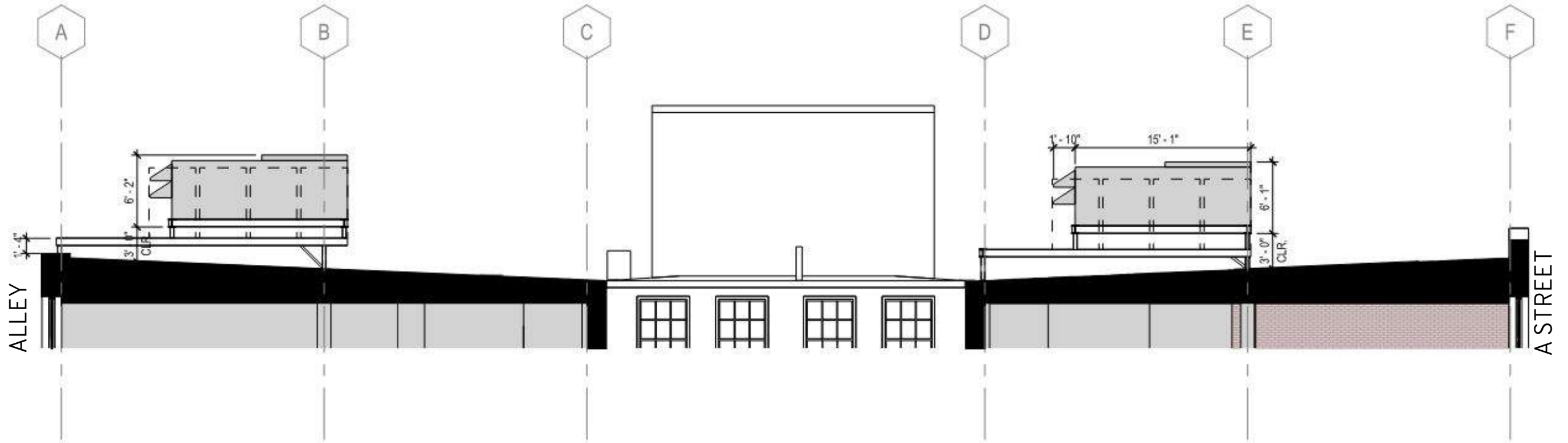


# ROOF PLAN: APPROVED NEW ROOFTOP UNITS

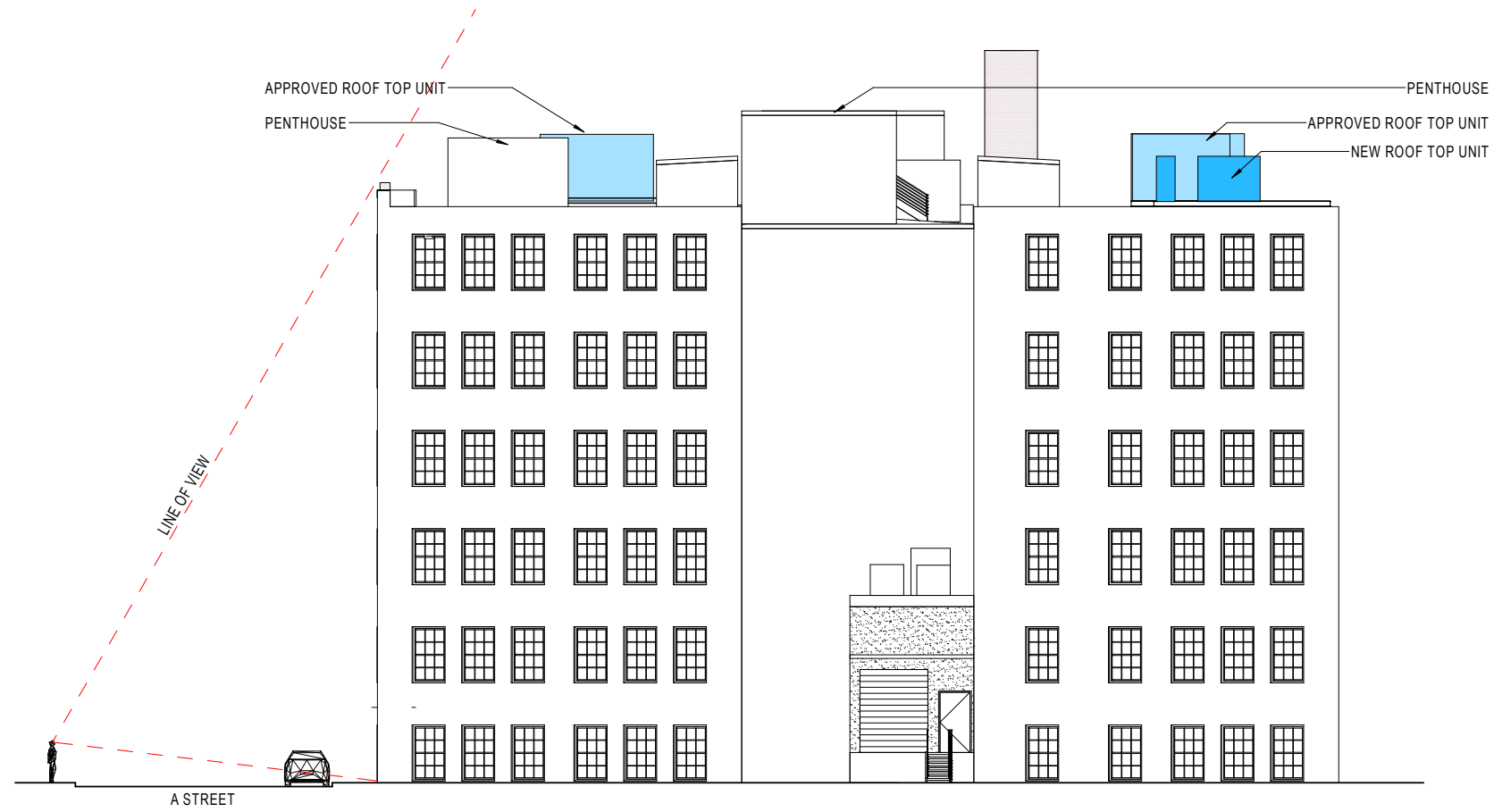




# ROOFTOP UNITS: ELEVATION OF PROPOSED UNITS (NOT TO SCALE)

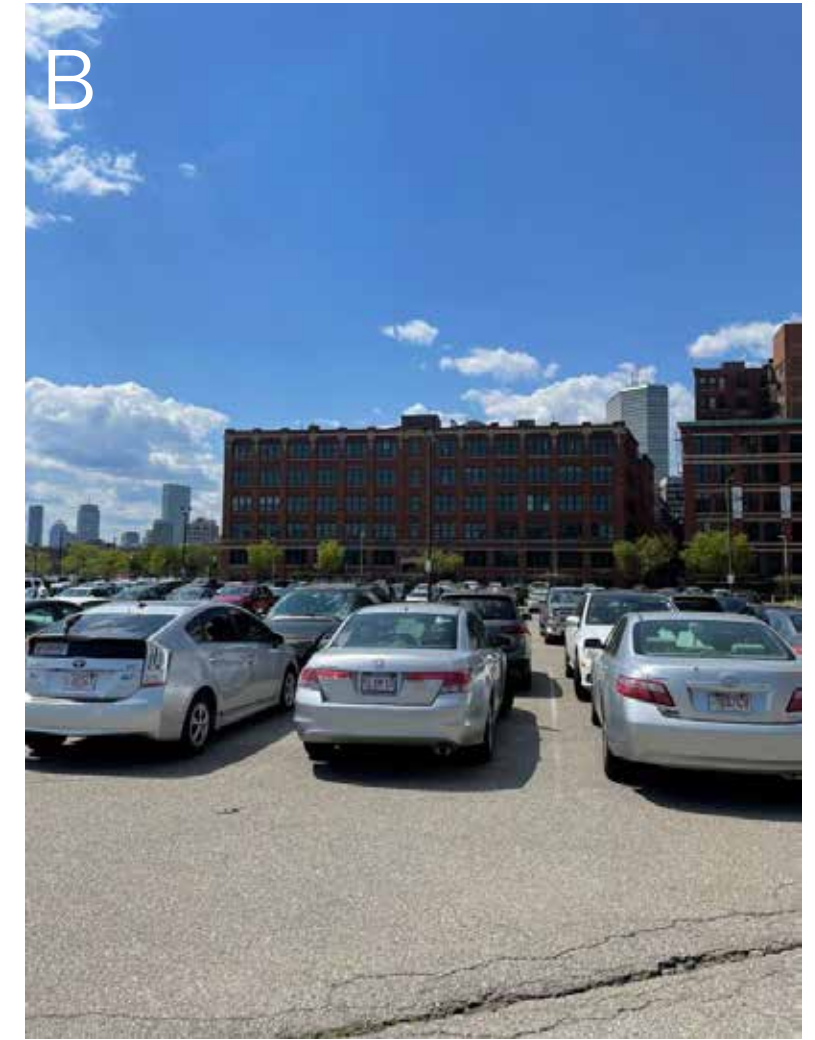
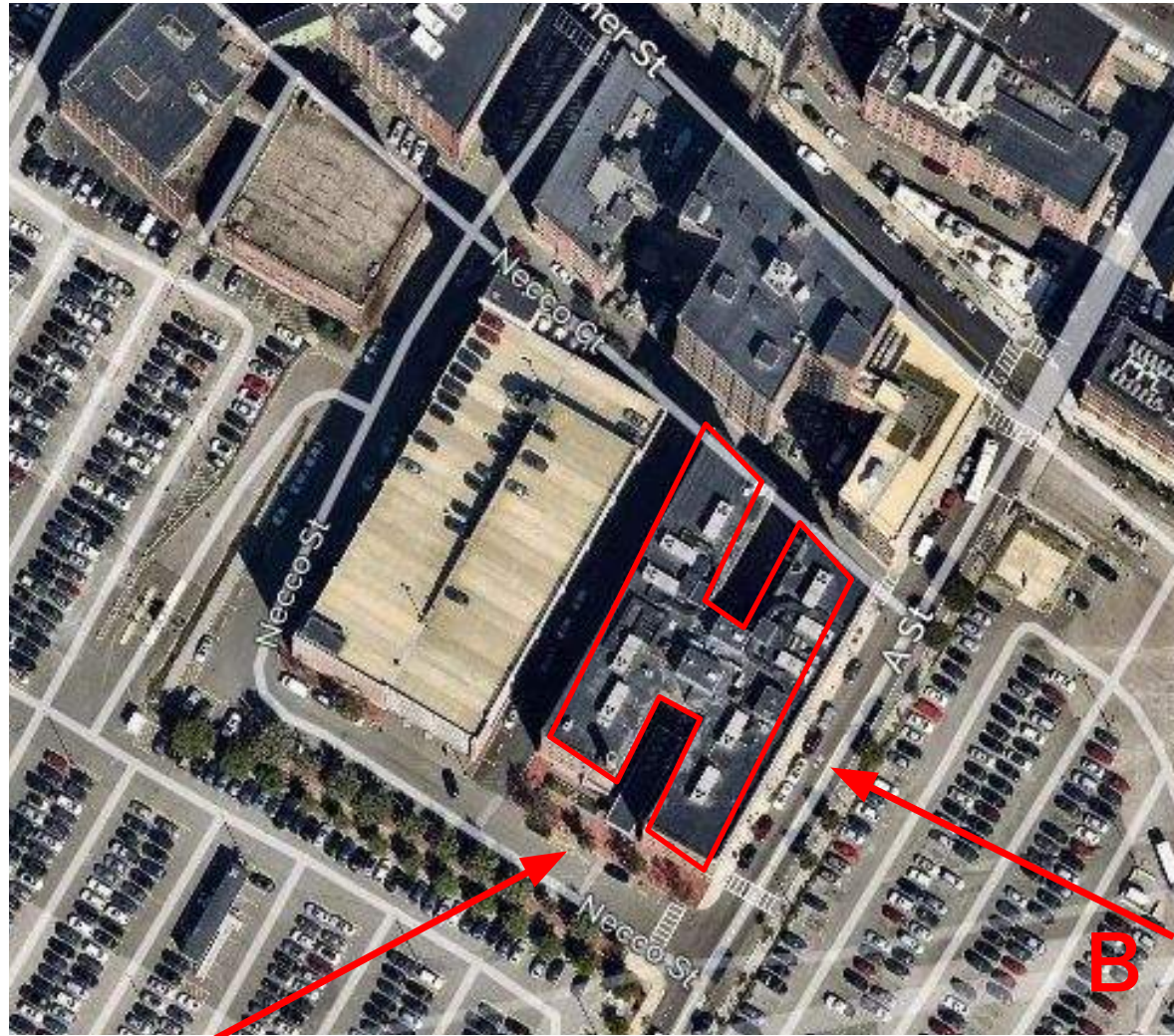


**ROOFTOP UNITS: SECTION OF PROPOSED UNITS (NOT TO SCALE)**



# ROOFTOP UNITS: VIEWING ANGLE (NOT TO SCALE)





A

B



**ROOFTOP UNITS: PROPOSED ROOFTOP EQUIPMENT REPLACEMENT**





Proposed Location  
*View from Parking Lot south of A Street*



Proposed Location  
*View from Parking Lot south of A Street (Zoom 5x)*



# ROOFTOP UNITS: ROOFTOP EQUIPMENT MOCKUP



Proposed Location  
*View from Summer Street Bridge*

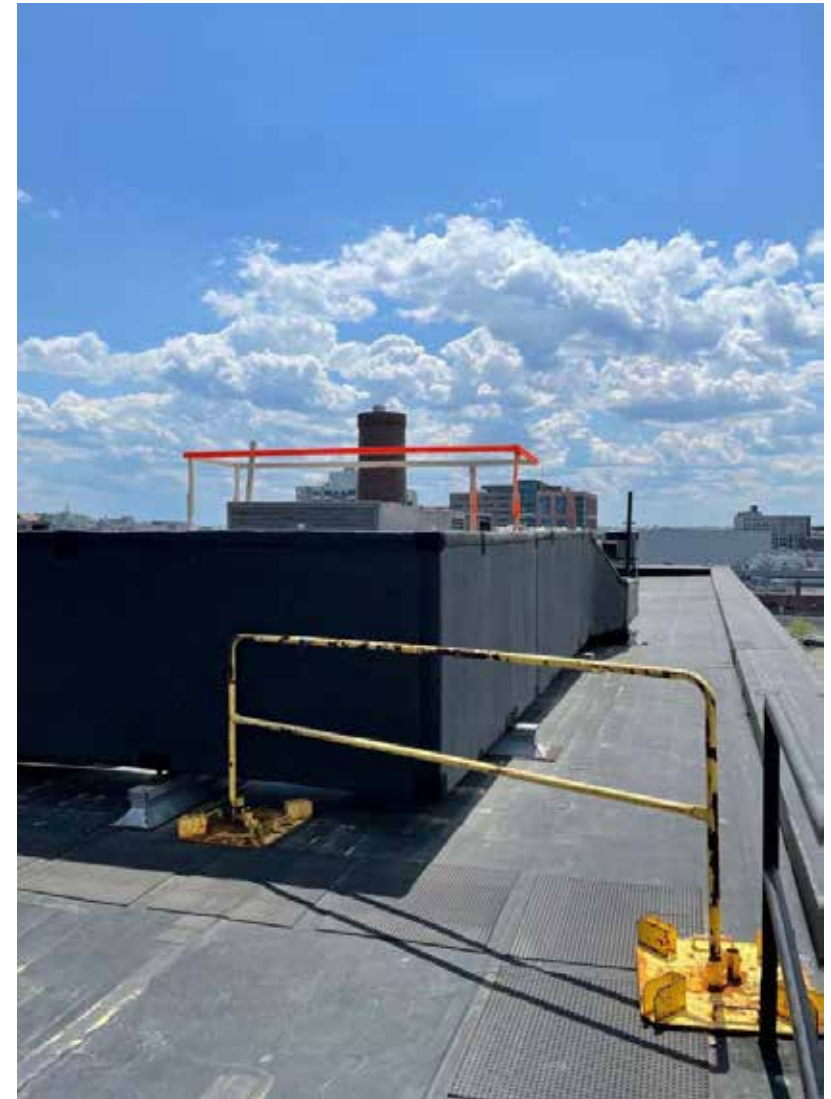


Proposed Location  
*View from Summer Street Bridge (Zoom 5x)*



## ROOFTOP UNITS: ROOFTOP EQUIPMENT MOCKUP





UNIT 1



# ROOFTOP UNITS: ROOFTOP EQUIPMENT MOCKUP



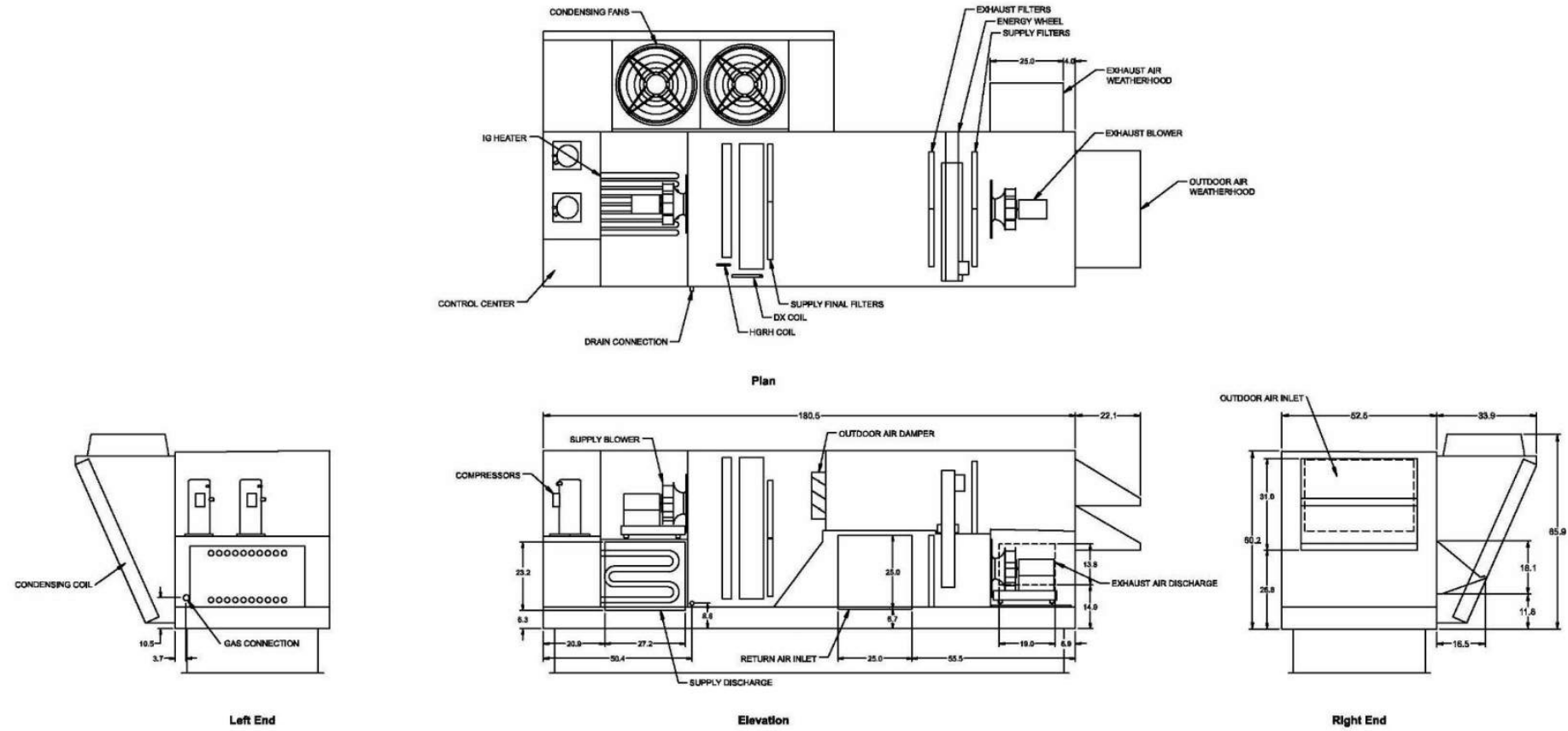
UNIT 2



**ROOFTOP UNITS: ROOFTOP EQUIPMENT MOCKUP**

**PremiSys<sup>®</sup>** Model: MPE-1-W2-4C-090 **MITSUBISHI ELECTRIC** COOLING & HEATING

**OVERVIEW DRAWINGS**



**ROOFTOP UNITS: PROPOSED ROOFTOP EQUIPMENT CHANGES - CUTSHEET**



**NYER BRUWN®**