



HARVARD
MEDICAL SCHOOL

OFFICE OF
Campus Planning
& Facilities

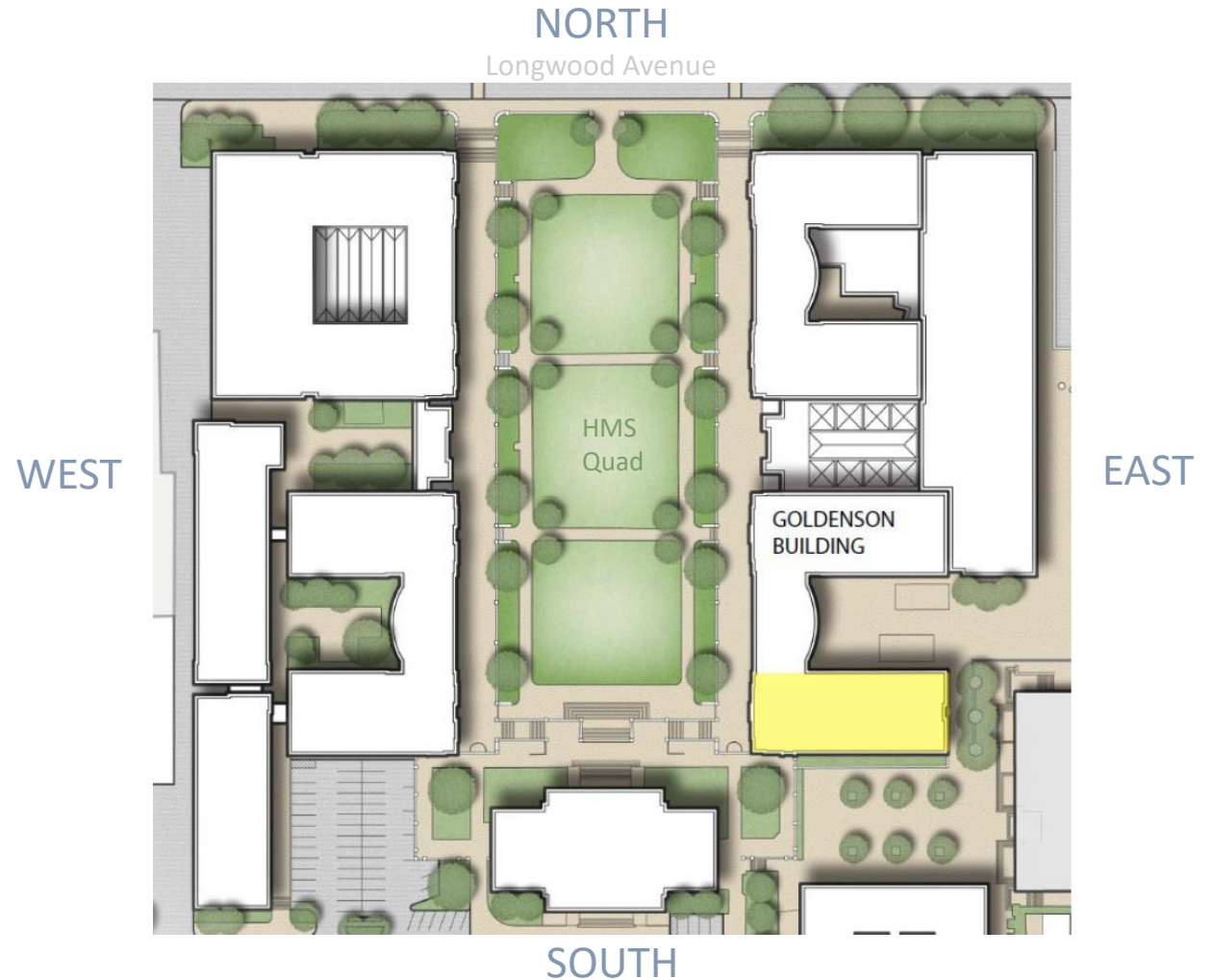
HMS Goldenson Building – Rooftop Mechanical Equipment Review

Boston Landmarks Commission █

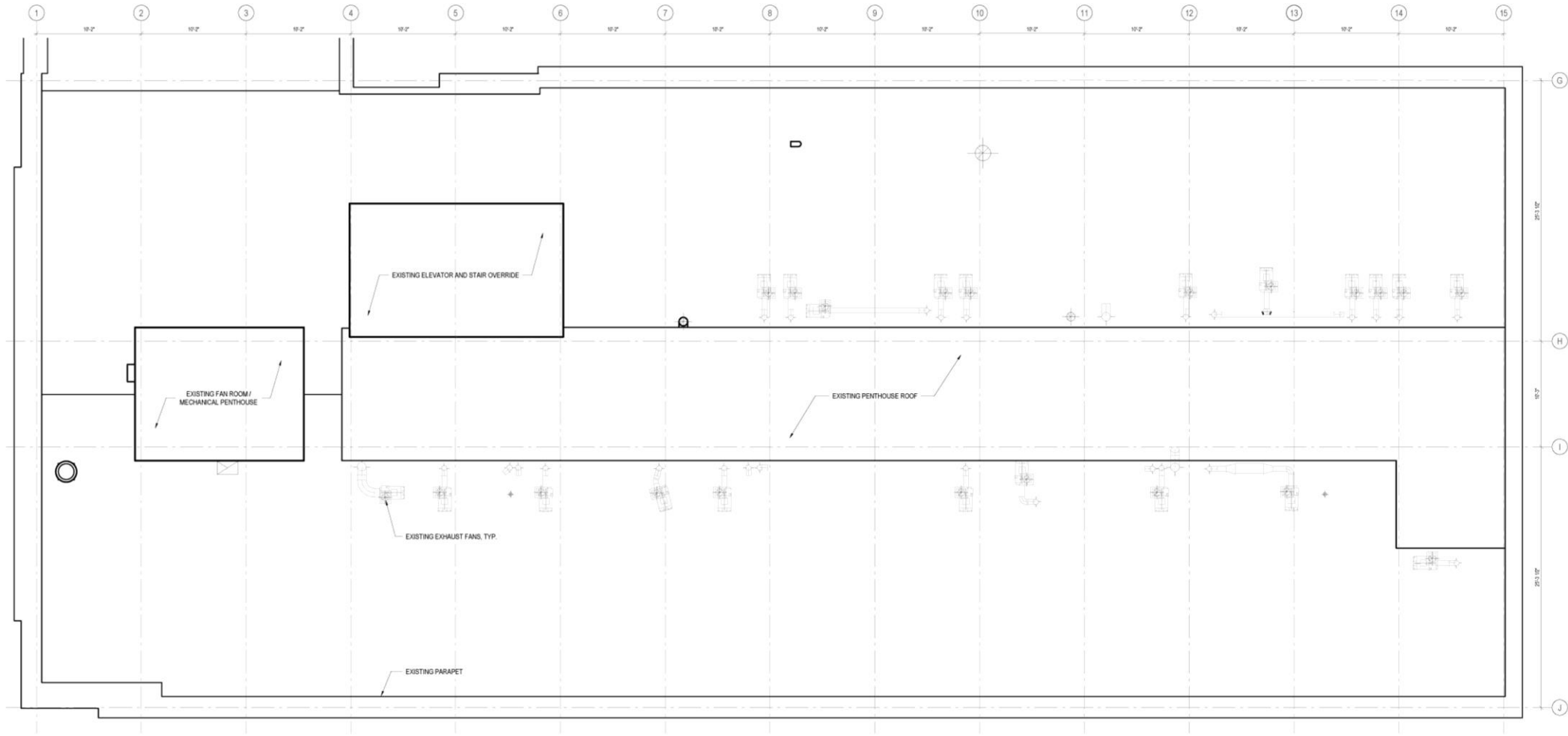
Site Plan

Project Goals:

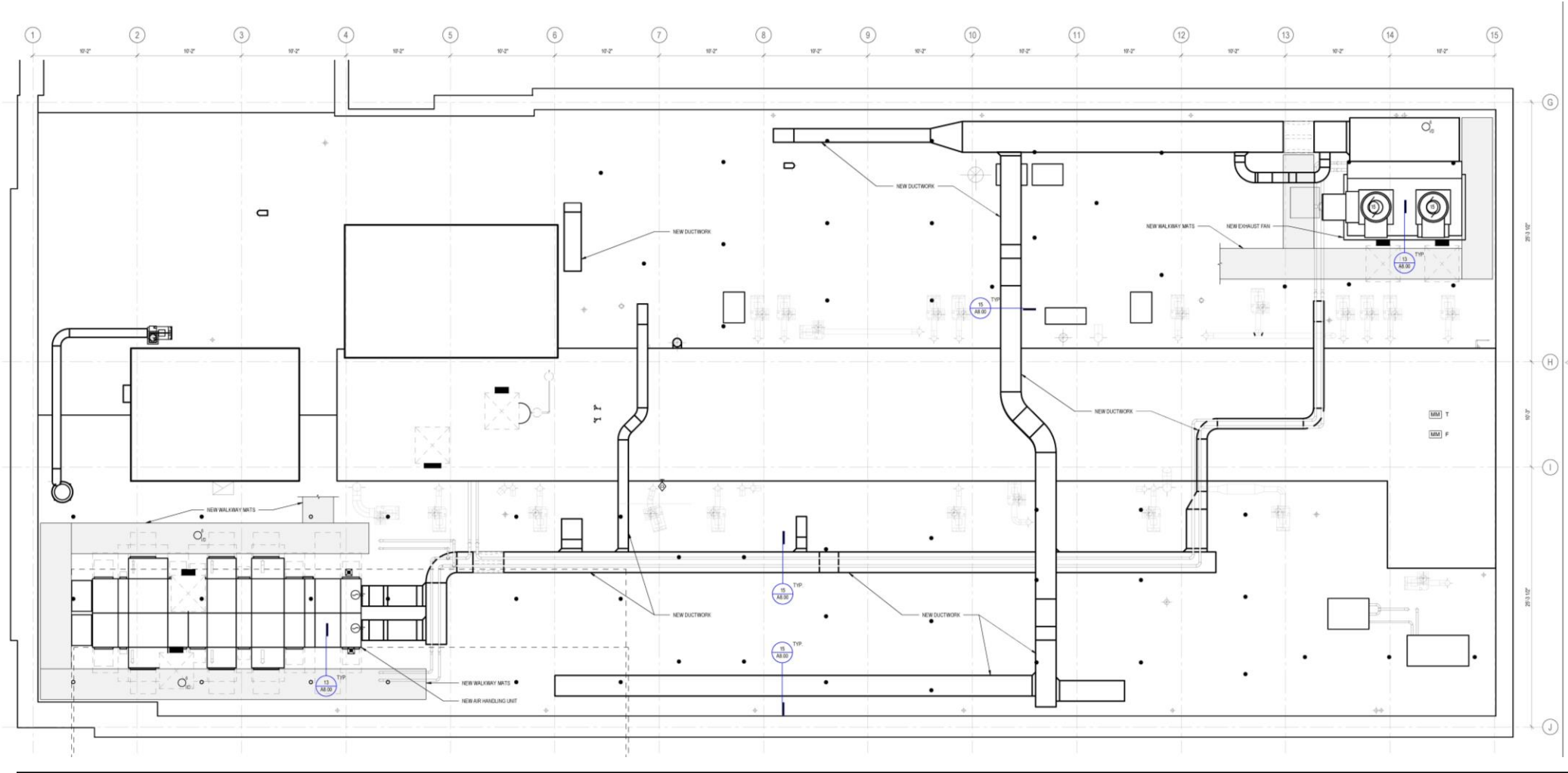
- Provide roof top equipment to support interior lab renovation
- Minimize visual appearance of new AHU units from Quad and Longwood
- Locate FES on roof area opposite of Quad and Longwood views
- Provide appropriate access to equipment for maintenance



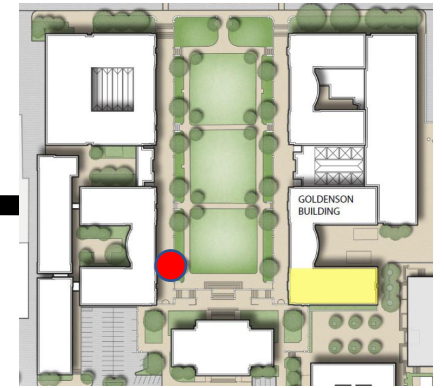
Existing Roof Plan



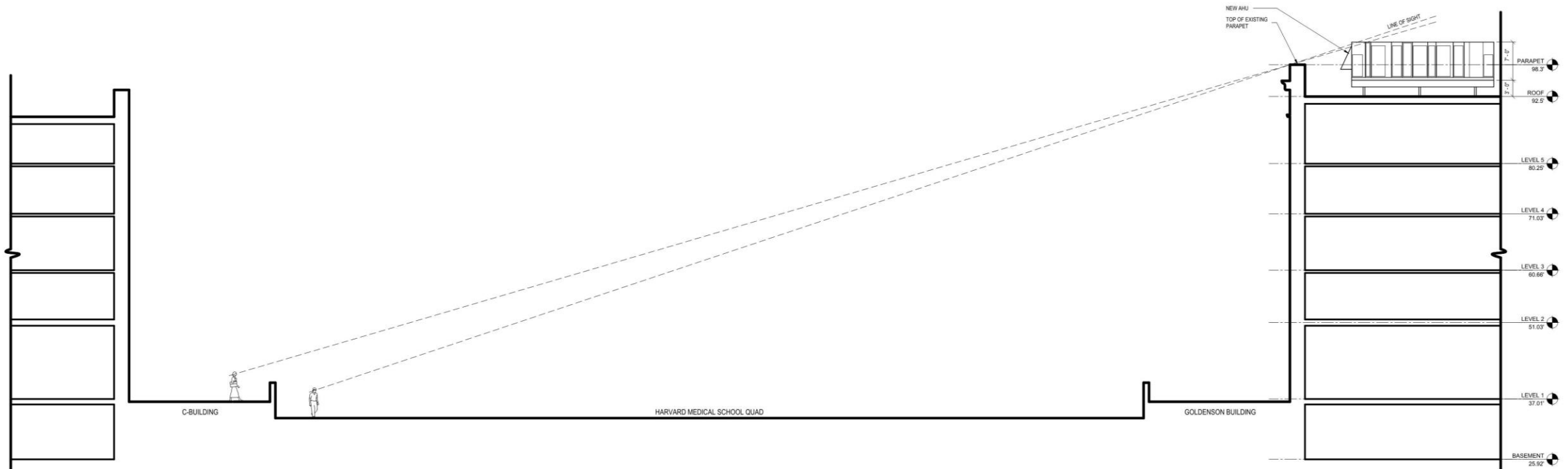
Proposed Roof Plan



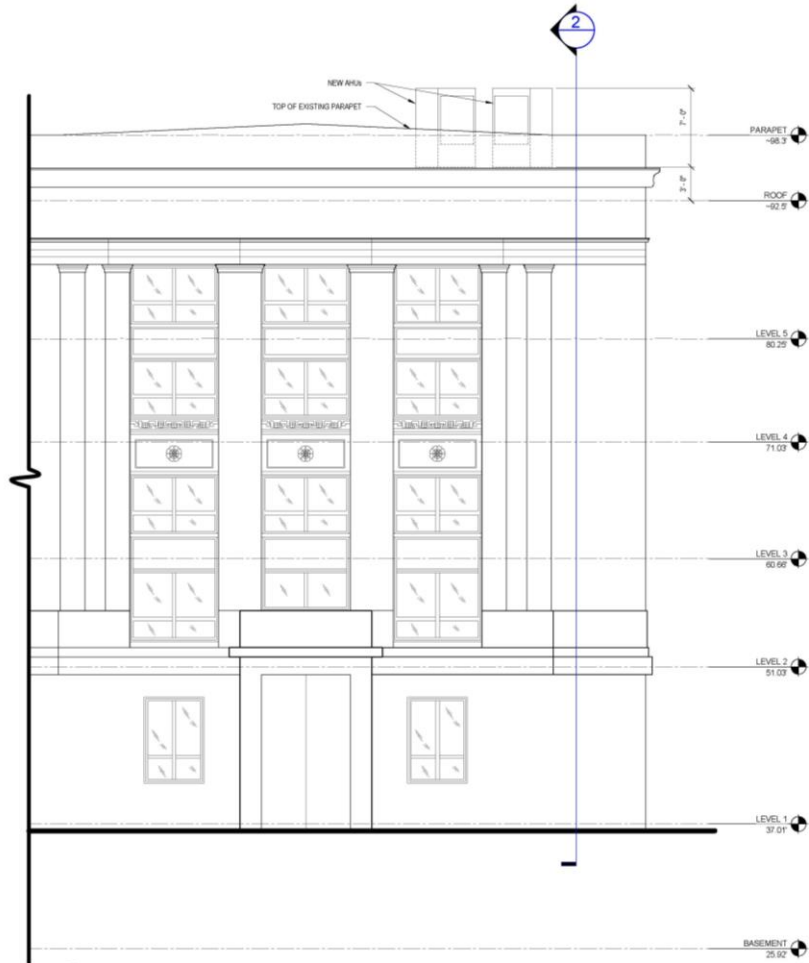
Site Section



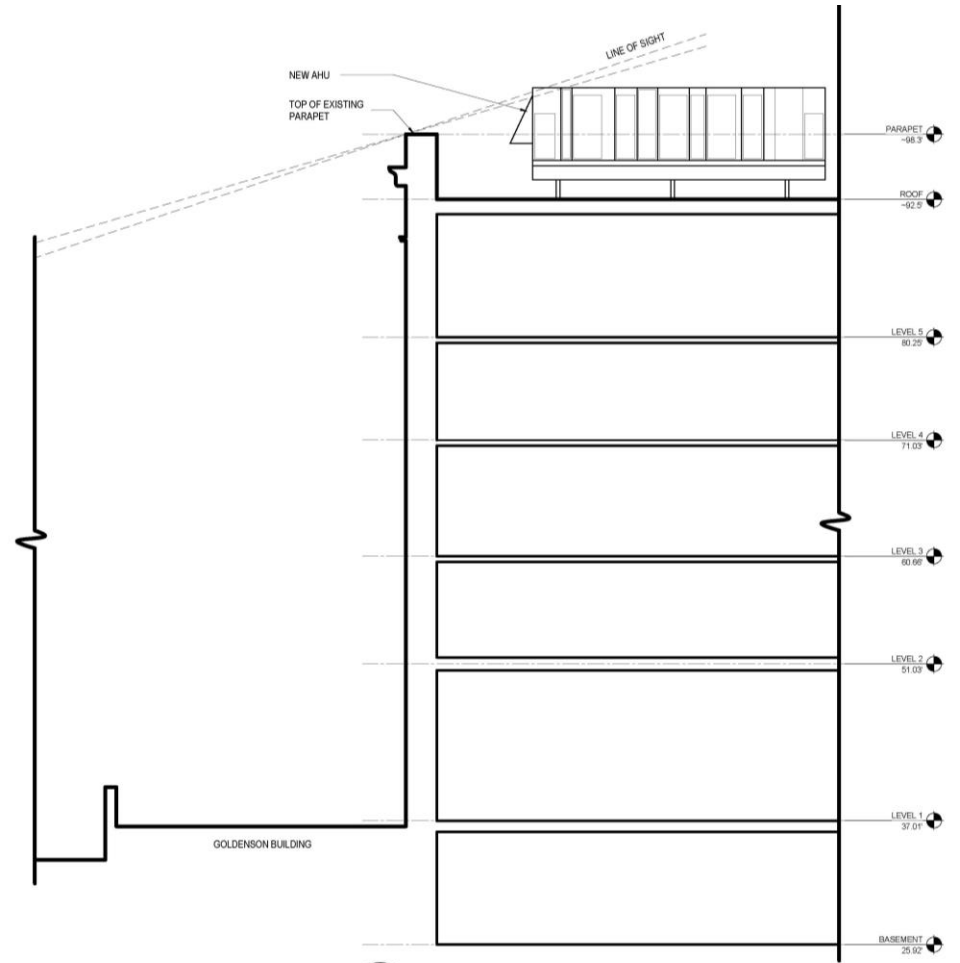
Site Map



Site Section & Elevation



1 GOLDENSON BUILDING - WEST ELEVATION
SCALE: 3/16" = 1'-0"

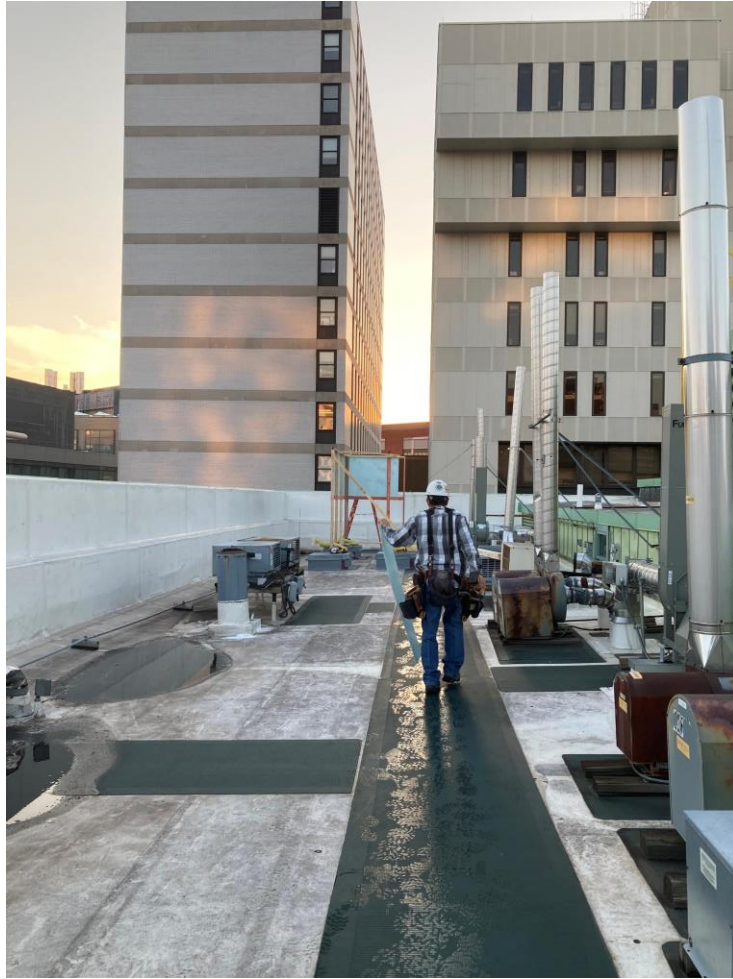


2 DETAILED GOLDENSON SECTION
SCALE: 3/16" = 1'-0"

Roof – Looking Towards Quad (west)



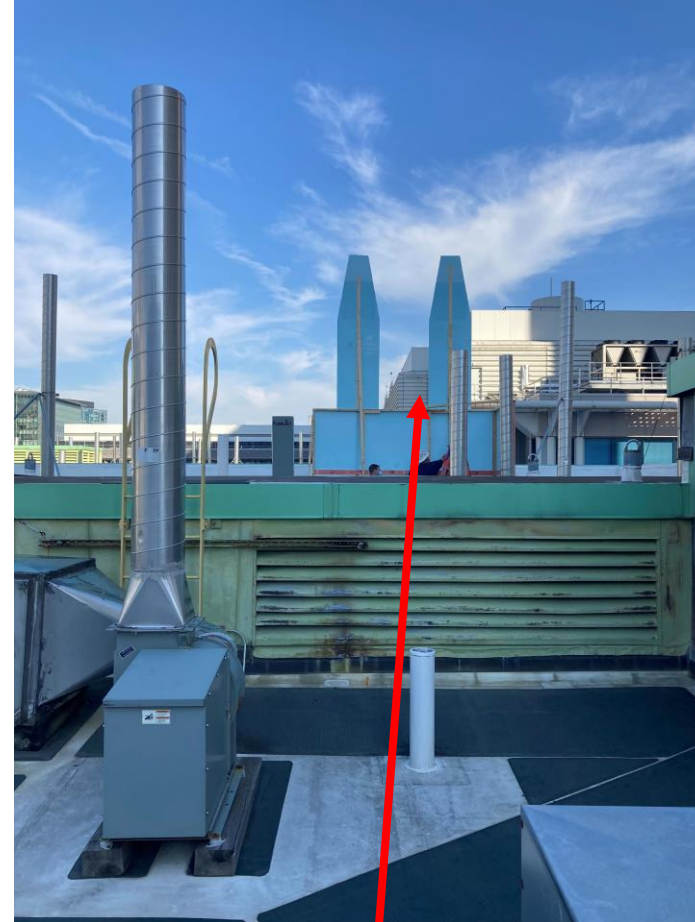
Roof – Looking Opposite of Quad (east)



Roof – Looking Towards Longwood (north)



Example of existing equipment (to remain)



FES Mock-up

Goldenson - View From Longwood



Pre Mock-Up



Pre Mock-Up



Post Mock-Up

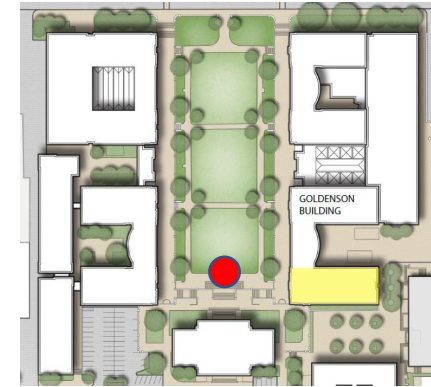
Goldenson - View from Quad



Pre Mock-Up



Post Mock-Up

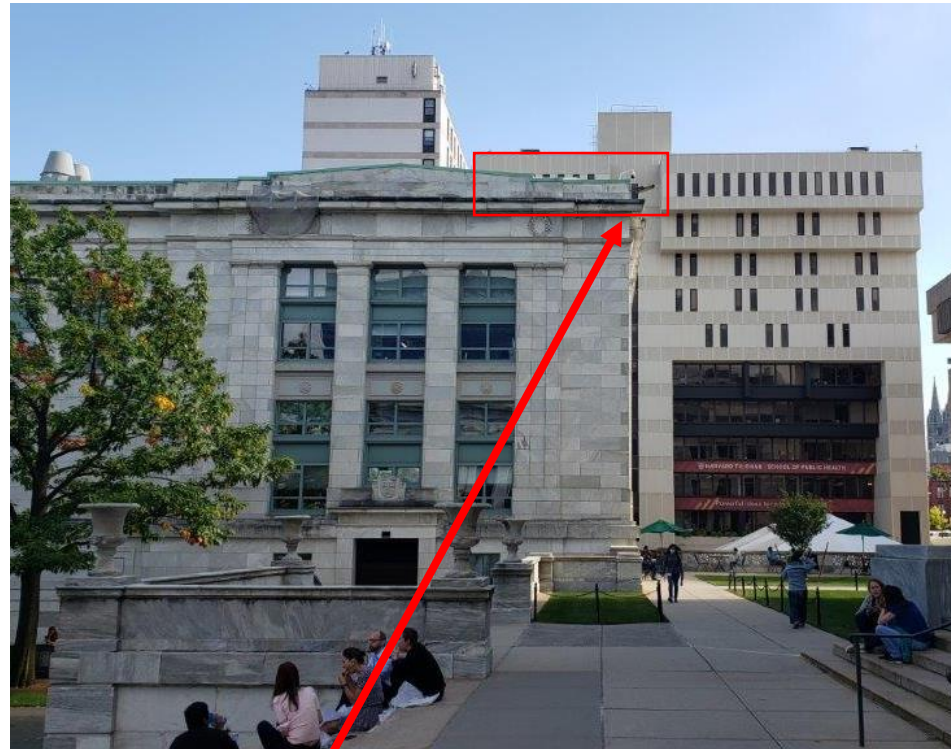


Site Map

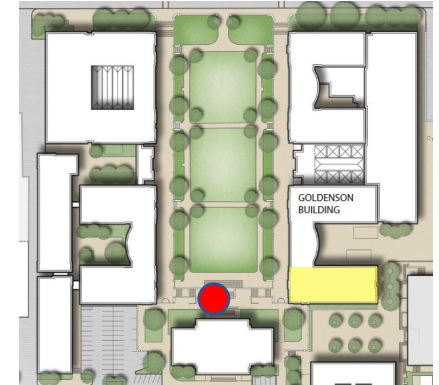
Goldenson - View From Quad



Pre Mock-Up



Post Mock-Up



Site Map



Questions?
