

**SUBMITTAL MATCHES DESIGN INTENT AND IS APPROVED FOR SUBMITTAL TO CITY OF BOSTON FOR APPROVAL.**

**EXTERIOR SIGNAGE BAND HEIGHT TO BE VERIFIED IN FIELD PRIOR TO FINAL INSTALLATION.**

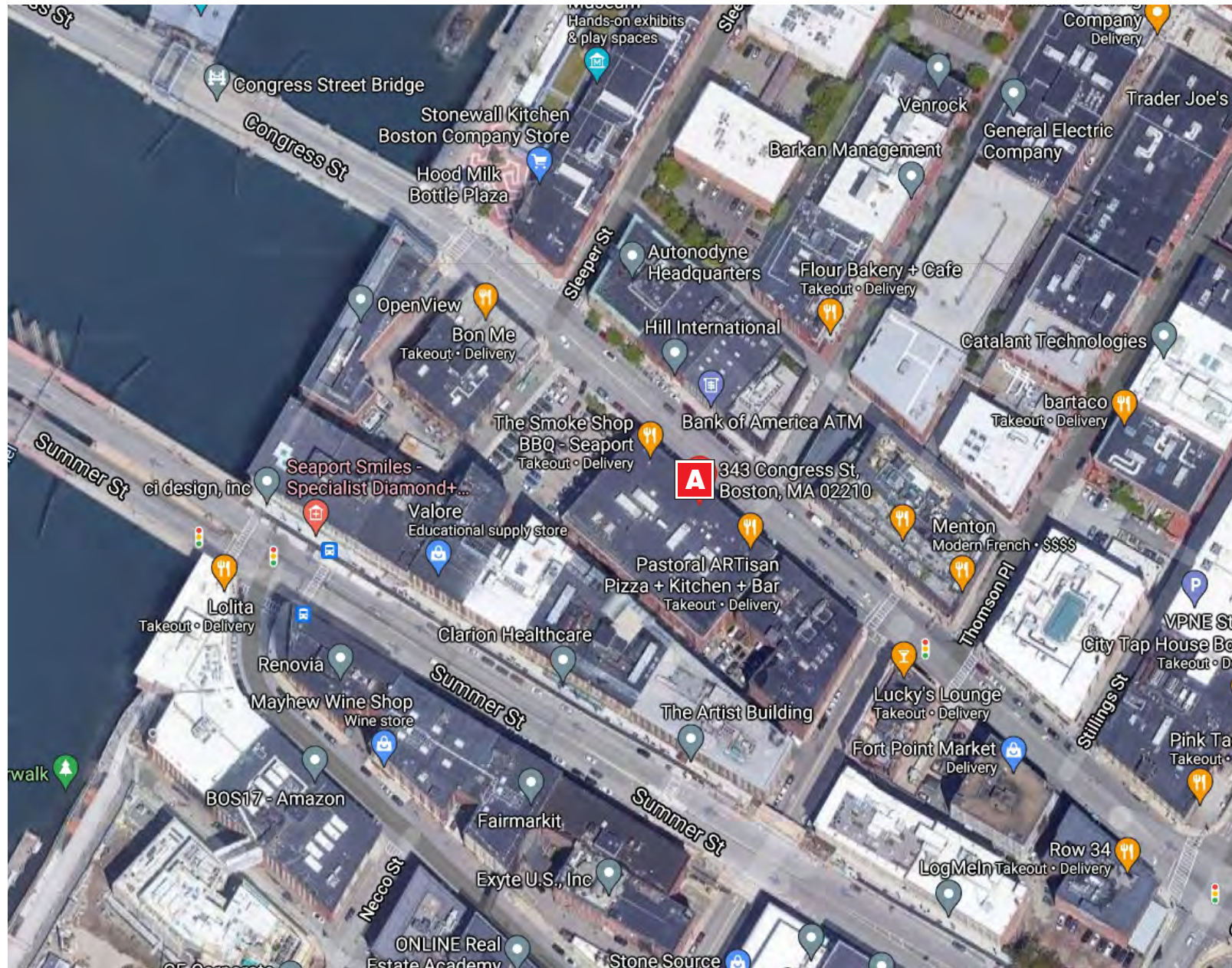
**'POWER BY OTHERS' NOTE TO BE COORDINATED AND CONFIRMED BY ELECTRICAL ENGINEER (HENDERSON), BUT IS NOT REQUIRED FOR INTAKE TO THE CITY OF BOSTON REVIEW. FITZGERALD/HENDERSON TO FOLLOW UP WITH CLIENT SEPARATELY.**

**CONFIRM WITH CHEWY ON FINAL COLOR OF BLUE FOR SIGN.**

<b>PROJECT NAME</b>		<b>FitzGerald</b>
Chewy BOS1		
<b>ACTION SUBMITTAL:</b>		
<input type="checkbox"/> APPROVED	<input type="checkbox"/> NOT APPROVED - REVISE AND RESUBMIT	
<input checked="" type="checkbox"/> APPROVED AS NOTED - DO NOT RESUBMIT	<input type="checkbox"/> REJECTED - SEE ADDITIONAL NOTES BELOW	
<b>ADDITIONAL NOTES:</b>		
Refer to notes adjacent to stamp.		
<b>BY</b> amagis	<b>DATE</b> 8/11/2021	
<b>SUBMITTAL#</b>	Exterior Sign	<b>SPEC</b>

FitzGerald's review herein is limited to checking for general conformance with information given and the design concept expressed in the Contract Documents, and is not conducted for determining the accuracy and completeness of dimensions, field measurements, quantities, installation instructions, installation or performance of equipment or systems, or for coordination with the requirements of the Work for all trades and of the Contract Documents, all of which remain the responsibility of the Contractor. This review does not relieve the Contractor of its obligations either contractual or for compliance with laws and regulations, and does not constitute approval of: safety precautions and programs incident thereto, information and choices pertaining to fabrication processes, or of any construction means, methods, techniques, sequences, or procedures. Within this review, approval of a specific item shall not indicate approval of an assembly of which the item is a component.

# 343 Congress Street Boston, MA



**SITE PLAN w/ SIGN LOCATION** **NTS**

**SIGN LEGEND**

**A** Silhouette Lighted Letter Display  
REF. DWG. KS2101546 and 1546A for details.

343 Congress Street - Boston, MA

**Kieffer | Starlite**  
National Sign Manufacturers and Consultants  
Dallas/Ft. Worth | Chicago | Sheboygan | Charlotte

ACCOUNT: <b>CHEVY</b>	DESIGNER: <b>LMK</b>	INITIALS & DATE:
LOCATION: <b>343 Congress Street - Boston, MA</b>		
ACCT. REP: <b>BB</b>		
DATE: <b>08/11/21</b>		
COMPANION FILES		

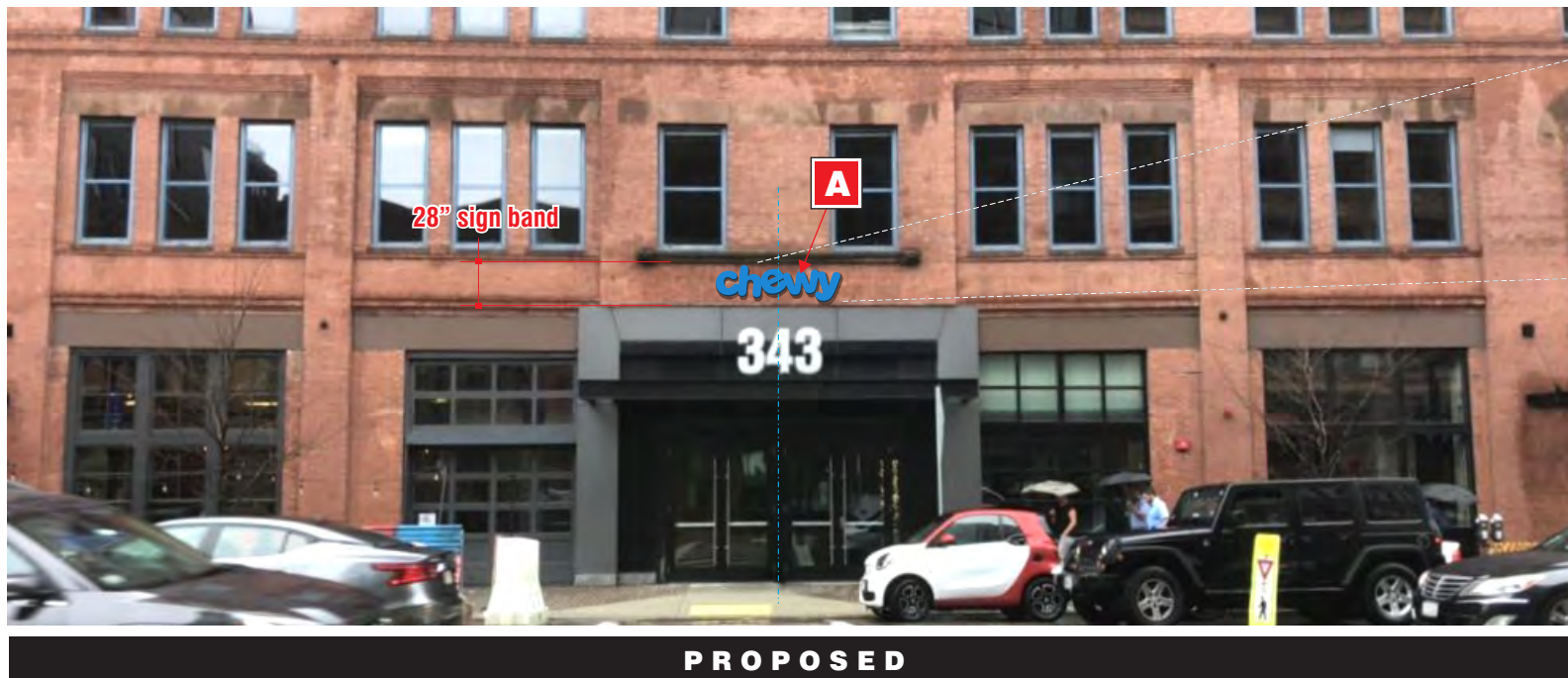
REVISIONS:	INITIALS & DATE:
A -	-
B -	-
C -	-
D -	-
E -	-
F -	-
G -	-
H -	-

This is an original unpublished drawing submitted for use in connection with a project being planned for you by Kieffer Holding Co. It is not to be reproduced, copied or exhibited in any fashion without the written permission of Kieffer Holding Company.

**For Contact Information  
visit us at  
www.kssigngroup.com**

**SITE**





**SILHOUETTE LIGHTED LETTER DISPLAY NTS**

**A** Silhouette Lighted Letter Display  
REF. DWG. KS2101546A for sizes, specs. & details.



343 Congress Street - Boston, MA

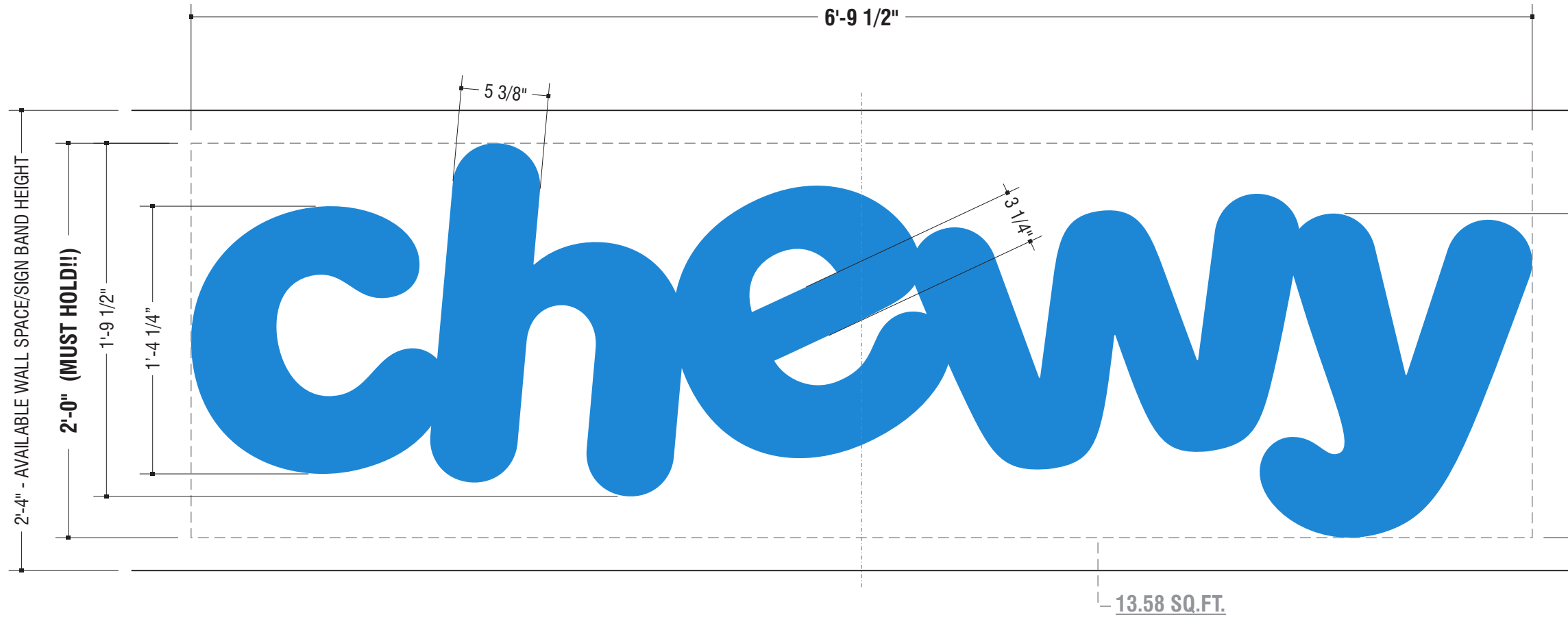
**Kieffer | Starlite**  
National Sign Manufacturers and Consultants  
Dallas/Ft. Worth | Chicago | Sheboygan | Charlotte

ACCOUNT: <b>CHEWY</b>	DESIGNER: <b>LMK</b>	REVISIONS:	INITIALS & DATE:
LOCATION: <b>343 Congress Street - Boston, MA</b>		▲ A -	-
ACCT. REP: <b>BB</b>		▲ B -	-
DATE: <b>08/11/21</b>		▲ C -	-
COMPANION FILES		▲ D -	-
		▲ E -	-
		▲ F -	-
		▲ G -	-
		▲ H -	-

This is an original unpublished drawing submitted for use in connection with a project being planned for you by Kieffer Holding Co. It is not to be reproduced, copied or exhibited in any fashion without the written permission of Kieffer Holding Company.

**For Contact Information  
visit us at  
www.kssigngroup.com**

**KS2101546**



**SILHOUETTE LIGHTED LETTER DISPLAY LAYOUT and DIMENSIONS** 1 1/2" = 1'-0"  
 13.58 SQ.FT.

**Color Schedule:**

Aluminum Returns and faces:

Paint to match  
 3M #3630-97 Bristol BLUE

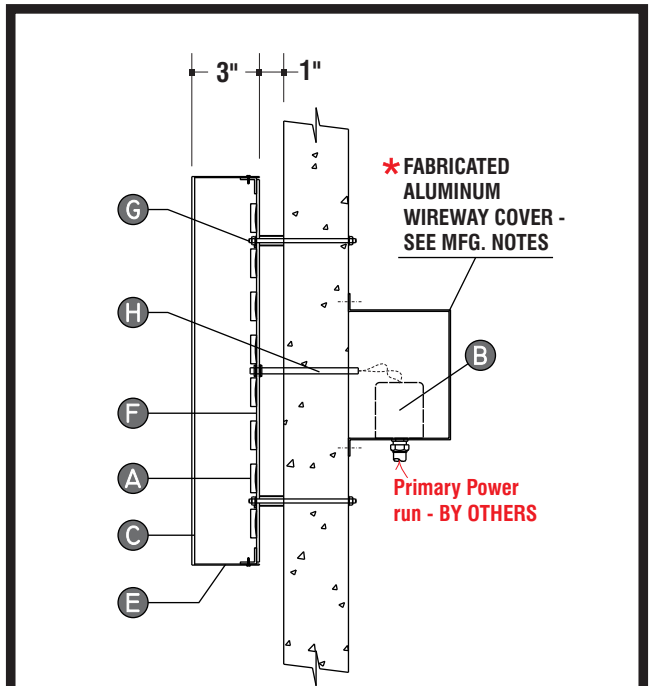
**Manufacturing Notes:**

- \* Visible office area behind wall. FINISHED WIREWAY COVER MUST BE PROVIDED. EXACT PER MFG.
- COLOR TO MATCH BRICK WALL - EXACT TBD.**

**Site Notes:**

- Primary Power run must be available at sign location - BY OTHERS.
- Rear access is required for wiring.

**SILHOUETTE LETTER SECTION - REMOTE**



A	ILLUMINATION	LED TYPE	PER MFG. FOR BEST ILLUM.
		COLOR	WHITE
B	POWER SUPPLY	TYPE	PER MFG.
C	FACE	MATERIAL	ALUMINUM
		COLOR	AS NOTED
		VINYL	N/A
D	RETAINER	TYPE	N/A
E	RETURN	MATERIAL	ALUMINUM
		COLOR	AS NOTED
		DEPTH	3"
F	BACK	MATERIAL	.150 POLYCARBONATE
		COLOR	2447 WHITE
		VINYL	N/A
G	MOUNTING	TYPE	ALUMINUM TUBE SPACER
		FASTENER	1/4"-20NC THREADED ROD
		STAND-OFF	1 1/2"
H	ELECTRICAL	TYPE	PASS THRU
		TYPE	PER MFG.
I	SWITCH	TYPE	DISCONNECT/TOGGLE
		LOCATION	PER MFG.

\*WEEP HOLE(S) PER MFG. STANDARDS  
 \*CAULK REQUIRED  
 \*UL LISTED PRODUCT

343 Congress Street - Boston, MA