



A Clearing in the Woods



Native Plantings

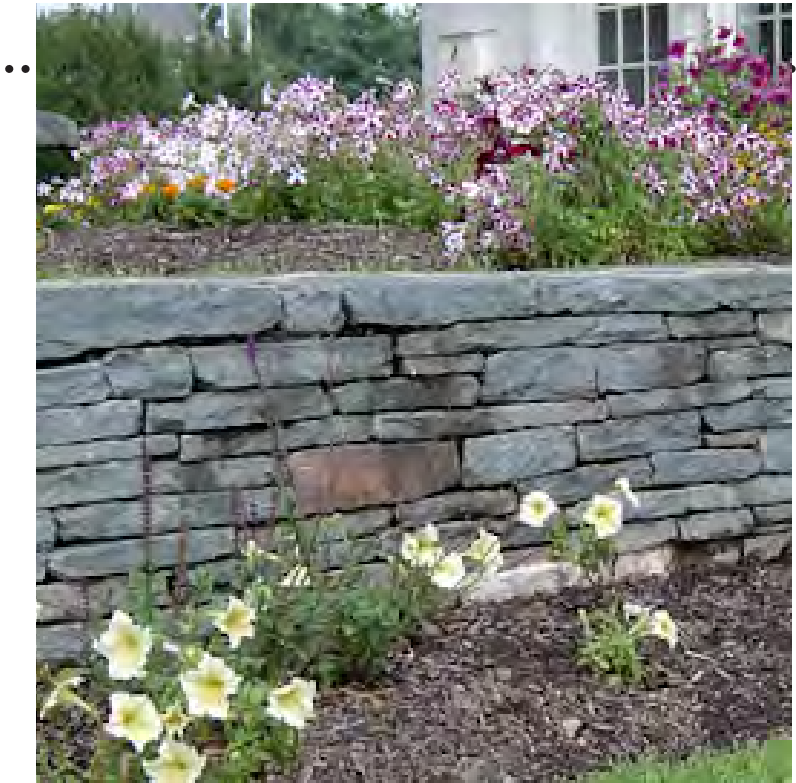


Retaining Wall to Protect Tree



Irregular Bluestone Patio - Oval Shape

MATERIALS



Stacked Stone Walls at Entry Drive



Boulder Retaining Walls



CIP Concrete

RETAINING STRUCTURES



Pervious Paving



Irregular Bluestone Entries



Mulch or Mown Lawn Paths

PAVING



PROPOSED PLANT LIST

KEY	QTY	LATIN NAME	COMMON NAME	SIZE	NOTES
Deciduous Trees:					
AR	3	<i>Acer rubrum</i>	Red Maple	3" cal.	B&B
BN	5	<i>Betula nigra</i> 'Heritage'	Heritage River Birch		
CK	7	<i>Cornus kousa</i> 'Venus'	Venus White Flow. Dogw.	2-2.5" cal	B&B
HV	6	<i>Hammamelis virginiana</i>	Witchhazel		
QA	3	<i>Quercus alba</i>	White Oak	3" cal.	B&B
Evergreen Trees:					
AC	3	<i>Abies concolor</i>	White Fir	7-8' ht.	B&B
CF	1	<i>Chamaecyparis obtusa</i> 'Pendula'	Weeping False Cypress		
IO	9	<i>Ilex opaca</i>	Am. Holly	5-6' ht.	B&B
TP	4	<i>Thuja plicata</i> 'Green Giant'	Green Giant Arborvitae	7-8' ht.	
TT	2	<i>Thuja 'Techny'</i>	Techny Arb		
Shrubs:					
CP	x	<i>Comptonia peregrina</i>	Sweetfern	5 gal.	
DC	1	<i>Deodar Cedar</i> 'Feeling Blue'	Dwarf Weeping Deodar Cedar	7 gal.	
HQ	17	<i>Hydrangea quercifolia</i>	Oakleaf Hydrangea		
KL	32	<i>Kalmia latifolia</i>	Mountain Laurel		
LF	35	<i>Leucothoe fontanesiana</i>	Fetterbush		
RA	46	<i>Rhus aromatica</i> 'Lo Gro'	Lo Gro Sumac	2 gal.	
RC	33	<i>Rhodo catawbiense</i>	Catawba Rhodo		
RM	11	<i>Rhodo maximum</i>	Rosebay Rhodo		
SC	6	<i>Sambucus canadensis</i>	Elderberry		
PA	10	<i>Pieris andromeda</i>	Andromeda		
CE	26	<i>Cornus alba</i> 'Elegantissima'	Variegated Red Twig Dogwood		
RT	6	<i>Rhus typhina</i>	Staghorn Sumac		
IT	31	<i>Itea virginica</i> 'Henry's Garnet'	Henry's Garnet Sweetspire		
VC	23	<i>Vaccinium corymbosum</i>	Highbush Blueberry		
IG	26	<i>Ilex glabra</i> 'Densa'	Inkberry		
VD	3	<i>Viburnum dentatum</i>	Arrowwood Viburnum		

Perennials/Groundcovers:

gm	12	<i>Geranium macrorrhizum</i> 'Bevan's Variety'	Bevans Bigroot Geranium	1 gal.
hm	15	<i>Hakonechloa macro</i> 'All Gold'	Hakone Grass	1 gal.
hu	6	<i>Heuchera</i> 'Autumn Bride'	Autumn Bride Coral Bell	1 gal.
is	8	<i>Iberis sempervirens</i>	Candytuft	1 gal.
pc	29	<i>Polystichum acrostichoides</i>	Christmas Fern	1 gal.
ps	x	<i>Pachysandra procumbens</i>	Pachysandra	4" pots
se	x	<i>Sedum rupestre</i> 'Angelina'	Yellow Sedum	4" pots

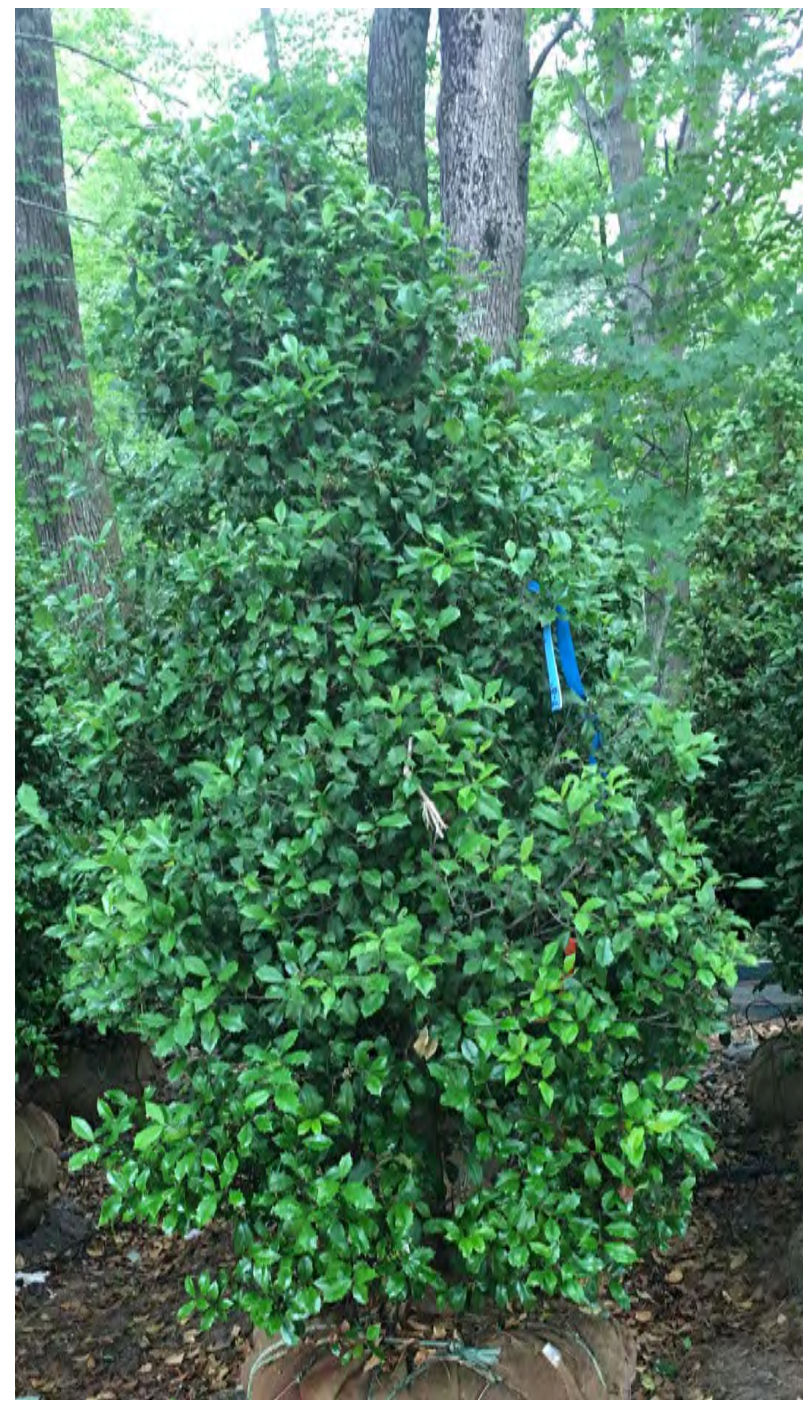
Low Mow Meadow
Overseed existing grassland with 'New England Warm Season Grass Mix' from New England Wetland Plants. Mow once per year in late summer after Aug 30.

Riparian Plants: Total square footage = approx. 8,500 sf. = approx. 400 plants + Wet Meadow Seed Mix*
In addition to trees and shrubs noted on the plan and listed above, plant the following in equal parts @ 24" o.c. (unless otherwise noted) throughout remainder of Riparian zone, in groups of 5 min. each, and then overseed with the Wet Meadow Seed Mix:

Perennials/Grasses/Sedges:

adi	<i>Aruncus dioicus</i>	Goatsbeard	2 gal. 30" o.c.
asp	<i>Asarum spp.</i>	Wild ginger	4" pots
cs	<i>Carex stricta</i>	Tussock Sedge	4" pots
cv	<i>Carex vulpinoidea</i>	Fox Sedge	4" pots
df	<i>Descampsia flexuosa</i>	Wavy Hair Grass	1 gal.
dp	<i>Dennstaedtia punctilobula</i>	Hay scented fern	1 gal.
epu	<i>Eutrochium purpureum</i>	Joe Pye Weed	1 gal.
ls	<i>Lobelia siphilitica</i>	Great Blue Lobelia	1 gal.
os	<i>Onoclea sensibilis</i>	Sensitive fern	1 gal.
st	<i>Schoenoplectus tabernaemontani</i>	Soft Bullrush	1 gal.
pv	<i>Panicum virgatum</i>	Switchgrass	2 gal. 30" o.c.

*Wet Meadow Seed Mix = 'New England Erosion Control/Restoration Mix For Detention Basins and Moist Sites' from New England Wetland Plants.



IO Am. Holly



AC White Fir



AR Red Maple



BN River Birch



QA White Oak



CR Dogwood



TP Green Giant Arborvitae



HV Witchhazel



HQ Oakleaf Hydrangea



KL Mountain Laurel



VD Arrowwood Viburnum



RC Catawba Rhodo



IG Inkberry



PA Mountain Andromeda



FG Fothergilla



DC Weeping Deodar Cedar



hm Japanese Forest Grass



RA Lo Gro Sumac



ps Pachysandra



pc Christmas Fern



LF Fetterbush



RT Staghorn Sumac



CE Variegated Red Twig Dogwood



SC Elderberry



RM Rosebay Rhodo



IT Sweetspire



Low Mow Lawn



Riparian Planting

SMH
RIM:193.61
INV (IN):187.60
INV (OUT):182.90
TR:180.50

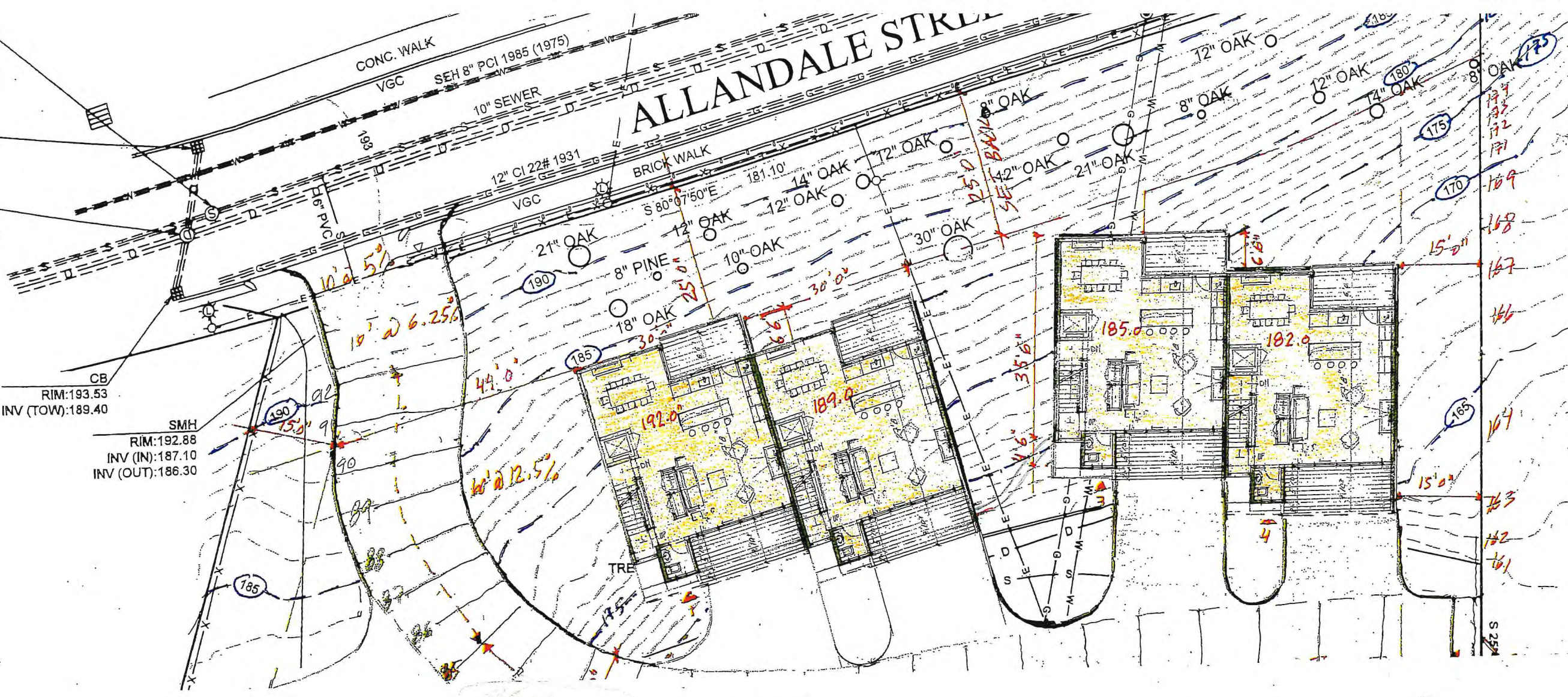
CB
RIM:193.63
(12" TOW):190.80

DMH
RIM:193.72
INV (IN):183.10
12" CB S:188.20
12" CB N:187.60
INV (OUT):182.90

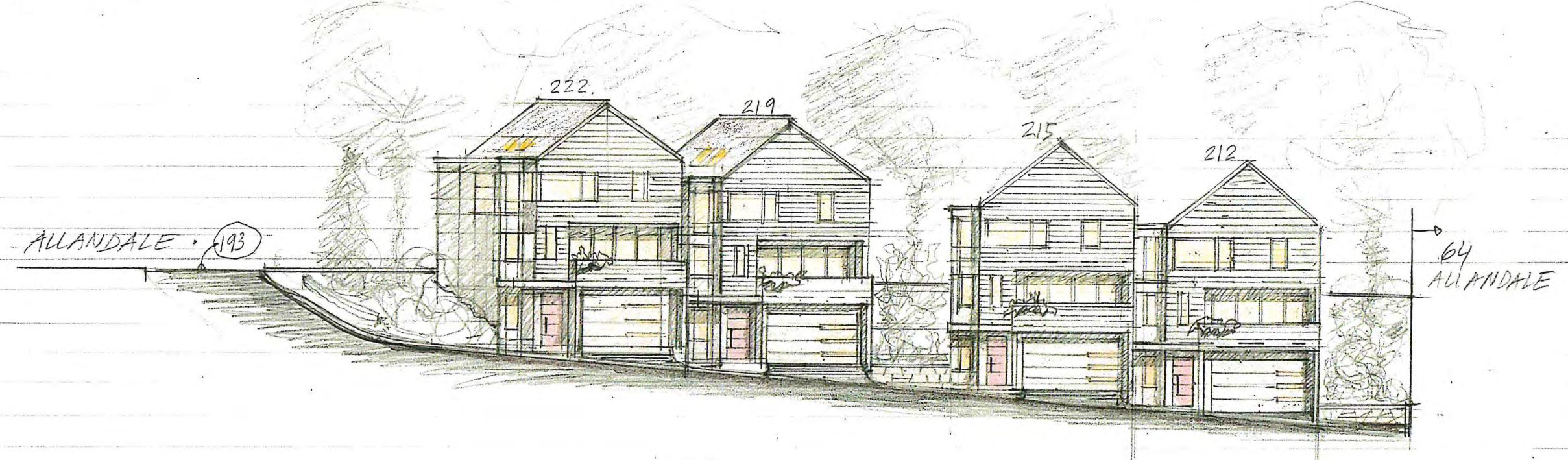
CB
RIM:193.53
INV (TOW):189.40

SMH
RIM:192.88
INV (IN):187.10
INV (OUT):186.30

ALLANDALE STREET

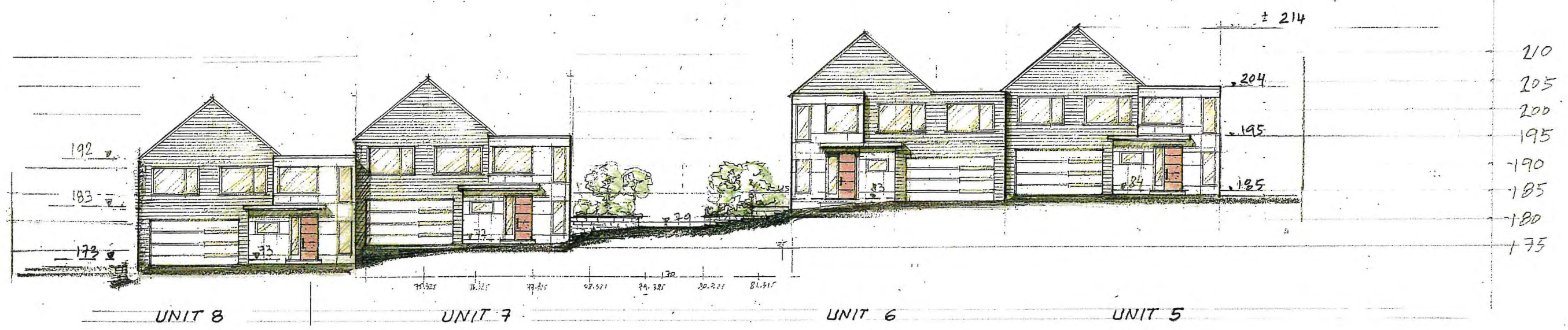
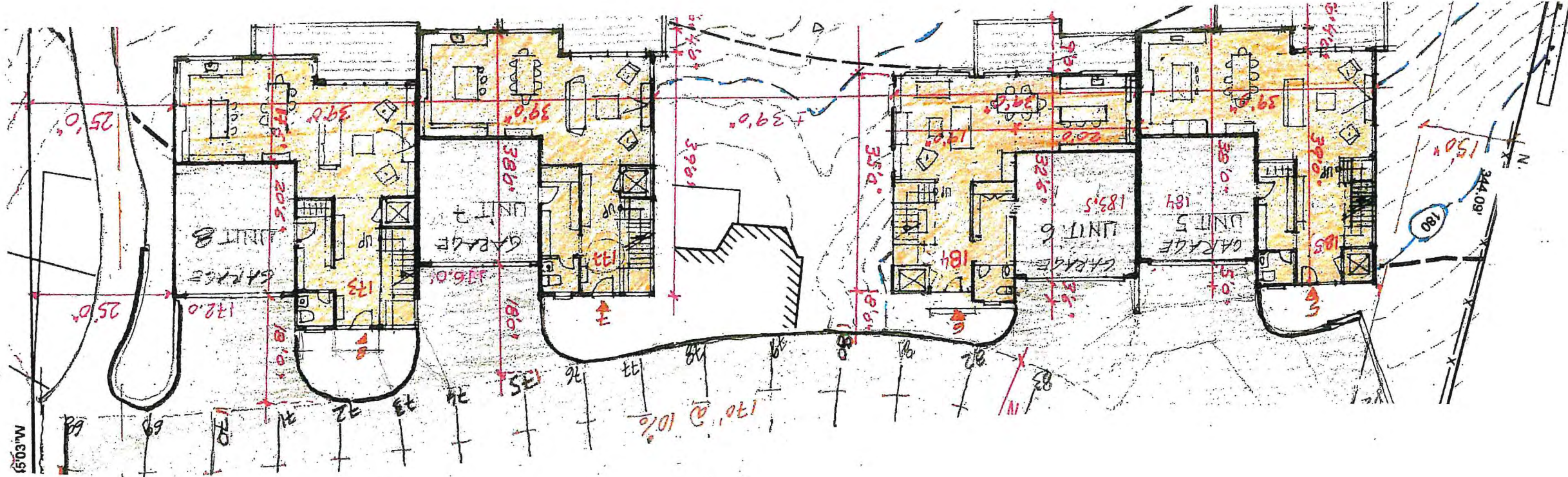


225
220
215
210
205
200
195
190
185
180
175
170
165



90 ALLANDALE STREET.

UNITS 1,2 3,4 SOUTH ELEVATION 1"=20'
STEFCD VV.ARCH DEC 7, 2021 SK.7



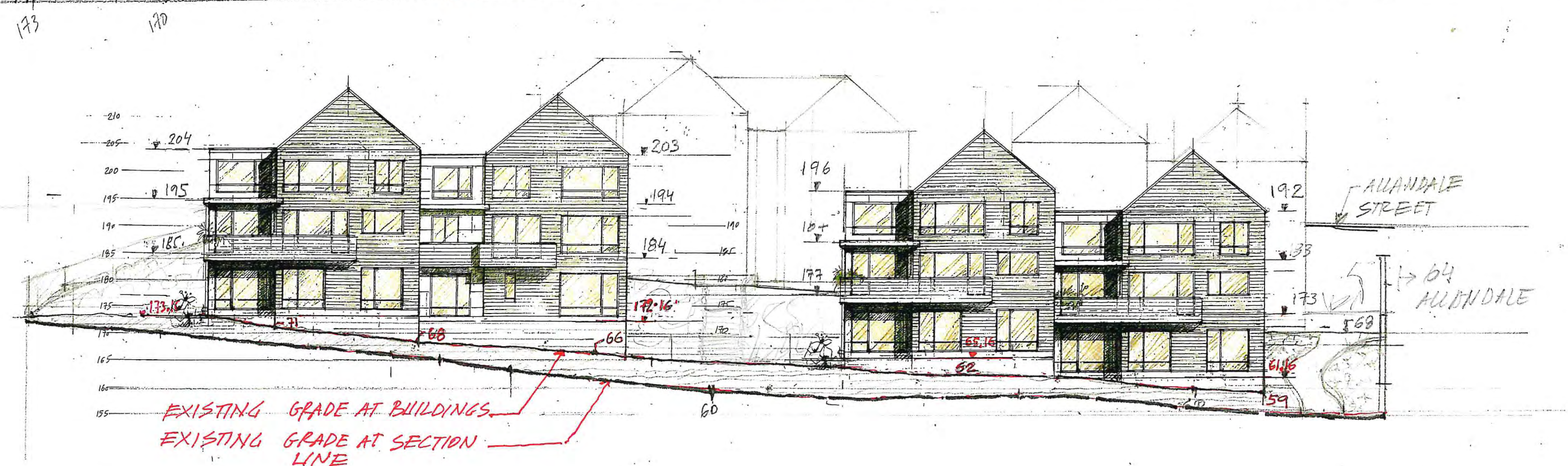
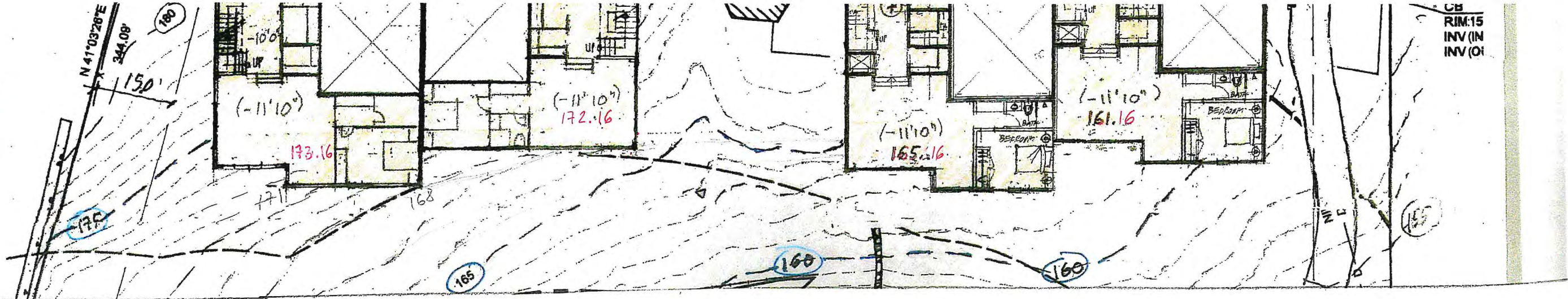
90 ALLANDALE STREET.

UNITS 5-8 - NORTH ELEVATION 1"=20'0"
 STEFCO - VV ARCH NOV 29, 2021

SK 8

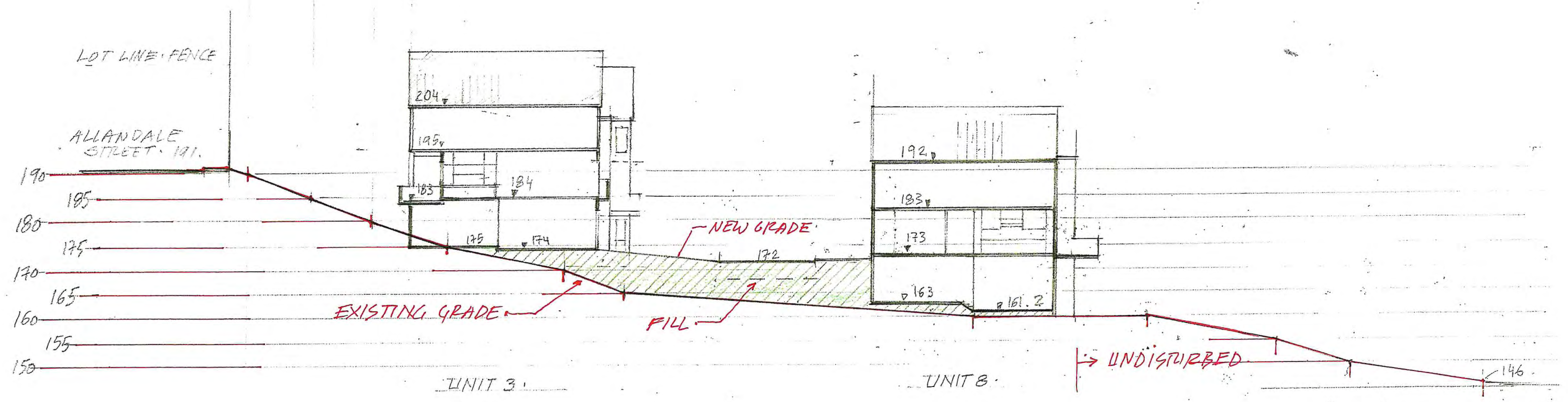
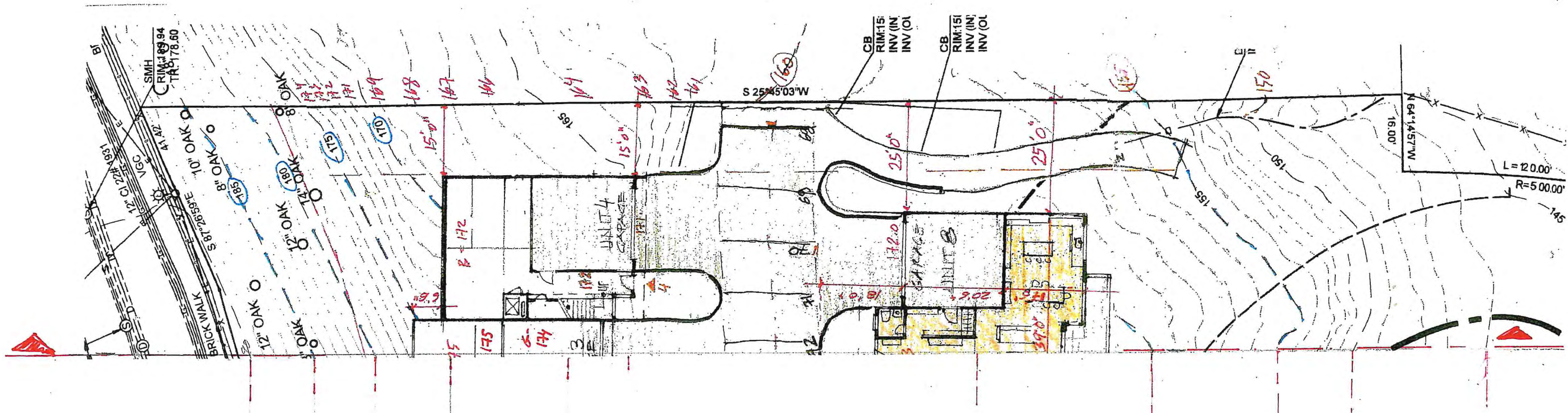
CB
RIM:15
INV(IN
INV(OI

LEVEL (-1)
7,8 - LOWER
STEP CO
1" = 20'



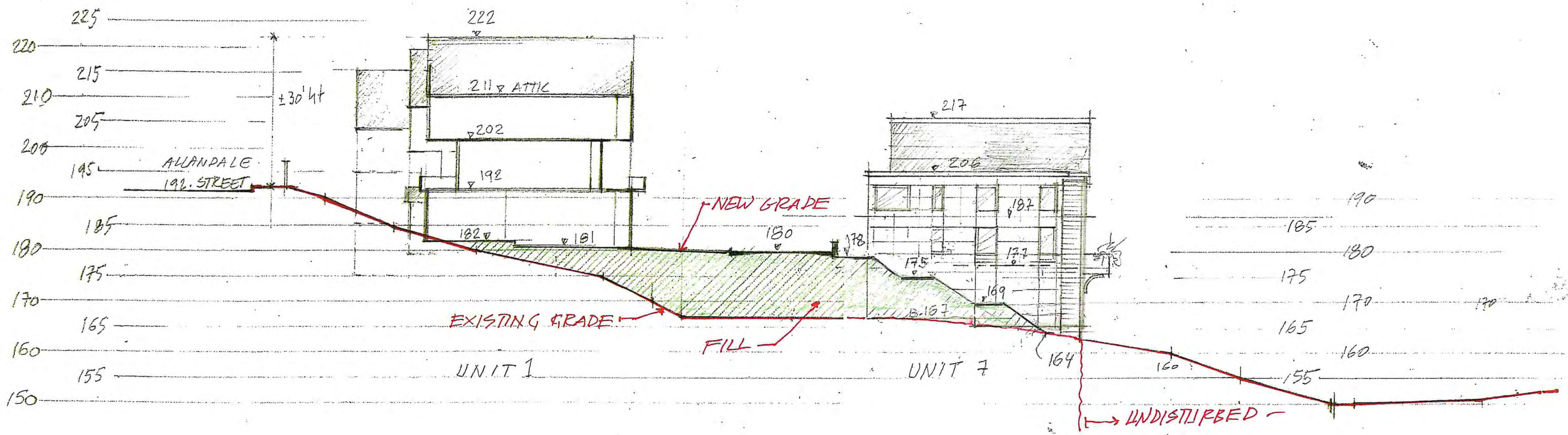
90 ALLANDALE STREET

UNITS 5,6 7,8 SOUTH VIEW 1/8" = 1'0"
STEP CO V.V. ARCH NOV 30 2021



90 ALLANDALE STREET.

SECTION A-A. 1"=20'
 STEFCO. YASSIA VALICHEV NOV 22, 2021
 SK. 10



90 ALLAN DALE STREET.

SECTION B-B. 1"=20'
 STEFCO, V.H. ARCH NOV 22, 2021 SK-11