







PLUMBING & HEATING INC.
PLUMBING • DRAIN CLEANING
in the Greater Boston Area
7-5810 (508) 598-5406

51T 290







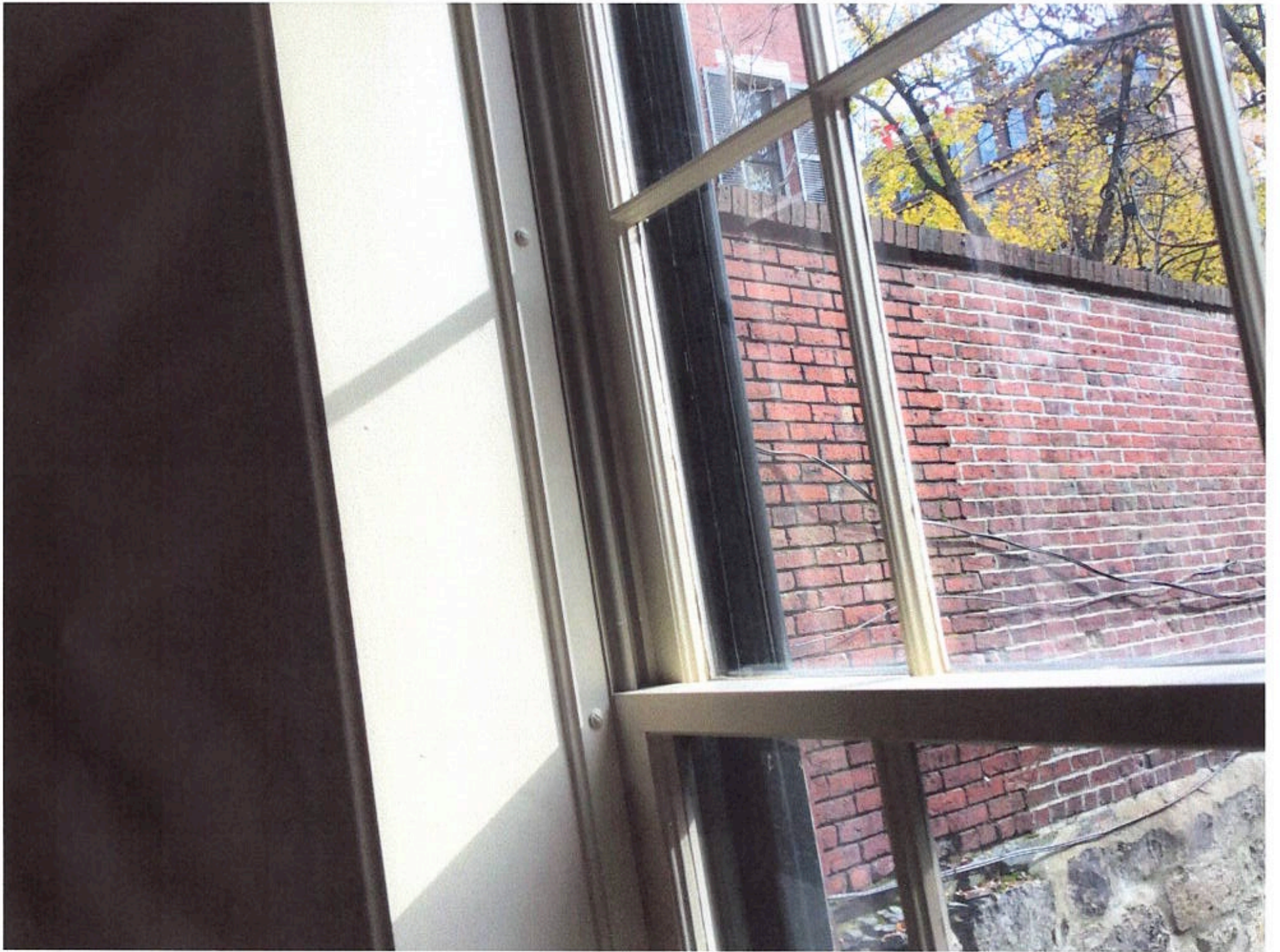




















BACK LEADED GLASS AREA

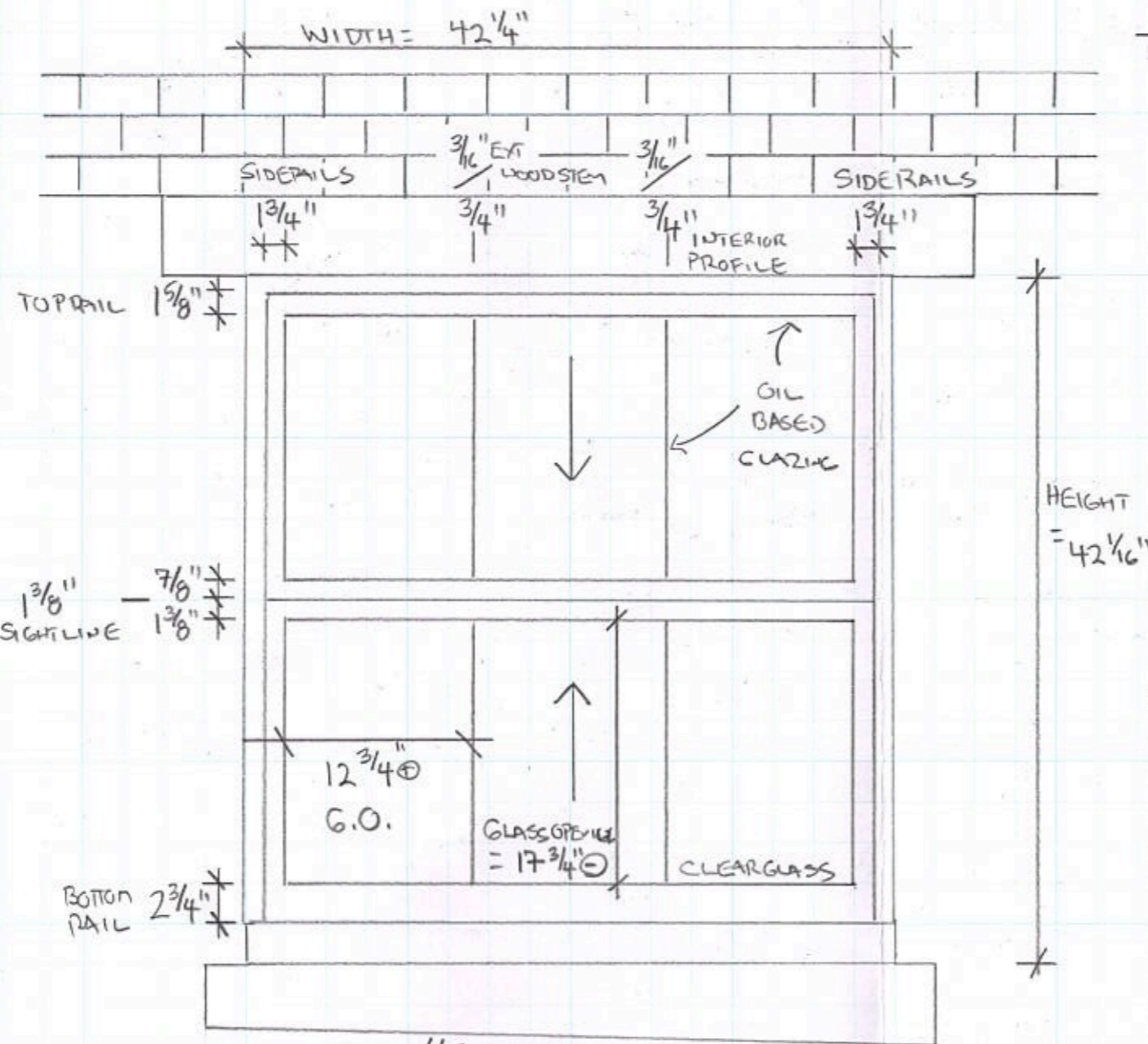












1 3/8" SIGHTLINE 7/8" 1 3/8"

BOTTOM RAIL 2 3/4"

HEIGHT = 42 1/16"

WOOD STEM 3/16"

1 3/8" SIGHTLINE 7/8" 1 3/8"

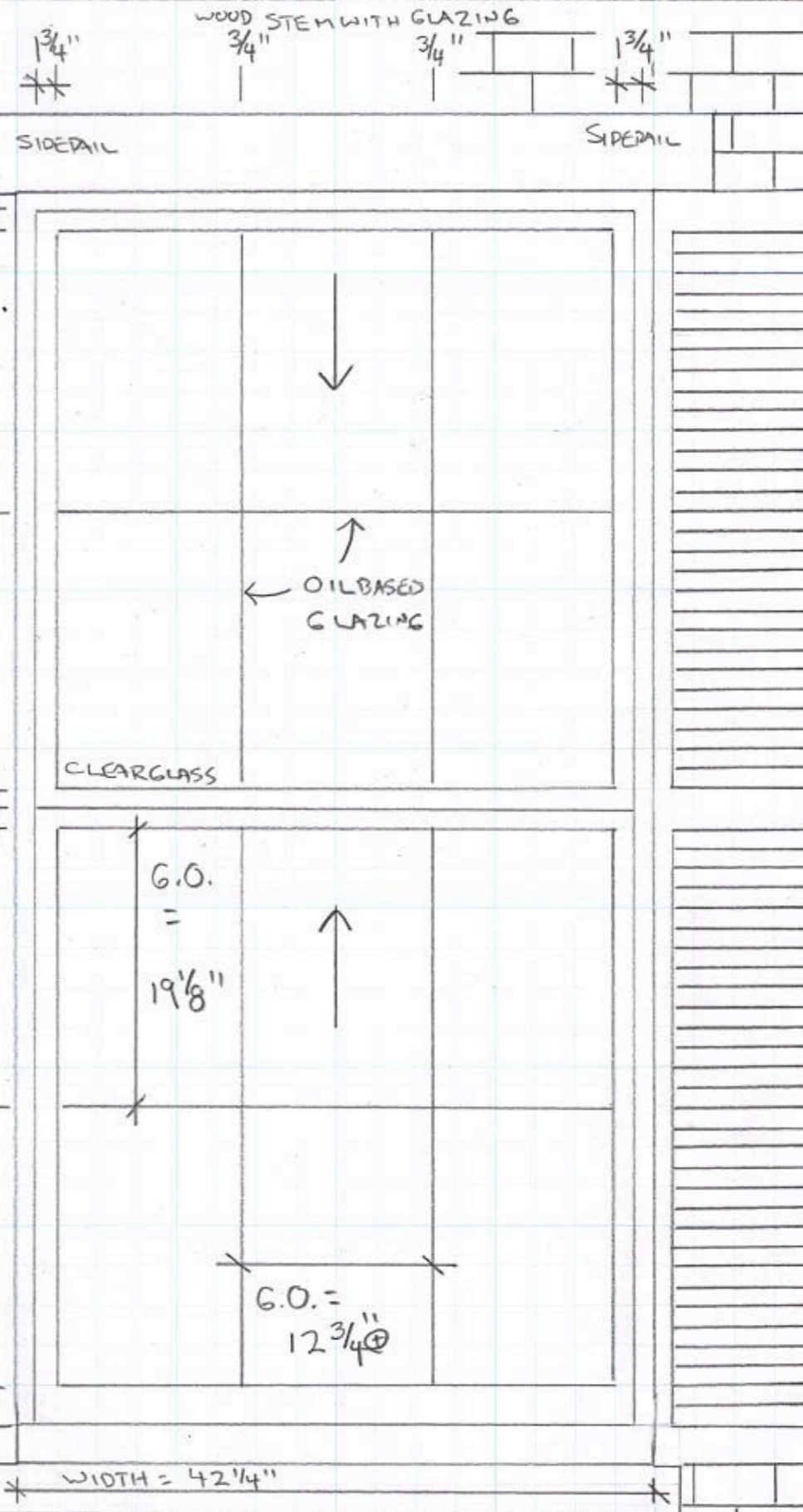
WOOD STEM 3/16"

HEIGHT = 83 1/2"

BOTTOM RAIL 2 3/4"

"SIDE WALK"
 1 TOTAL 3/8 SASH SET & NEW FRAME
 DOUBLE HUNG, TRUE DIVIDED LIGHT
 PAINTED
 BASEMENT / SIDE WALK LEVEL

ALL SASH TO BE PAINTED: TRI-CORN BLACK
 AT EXTERIOR



WIDTH = 42 1/4"

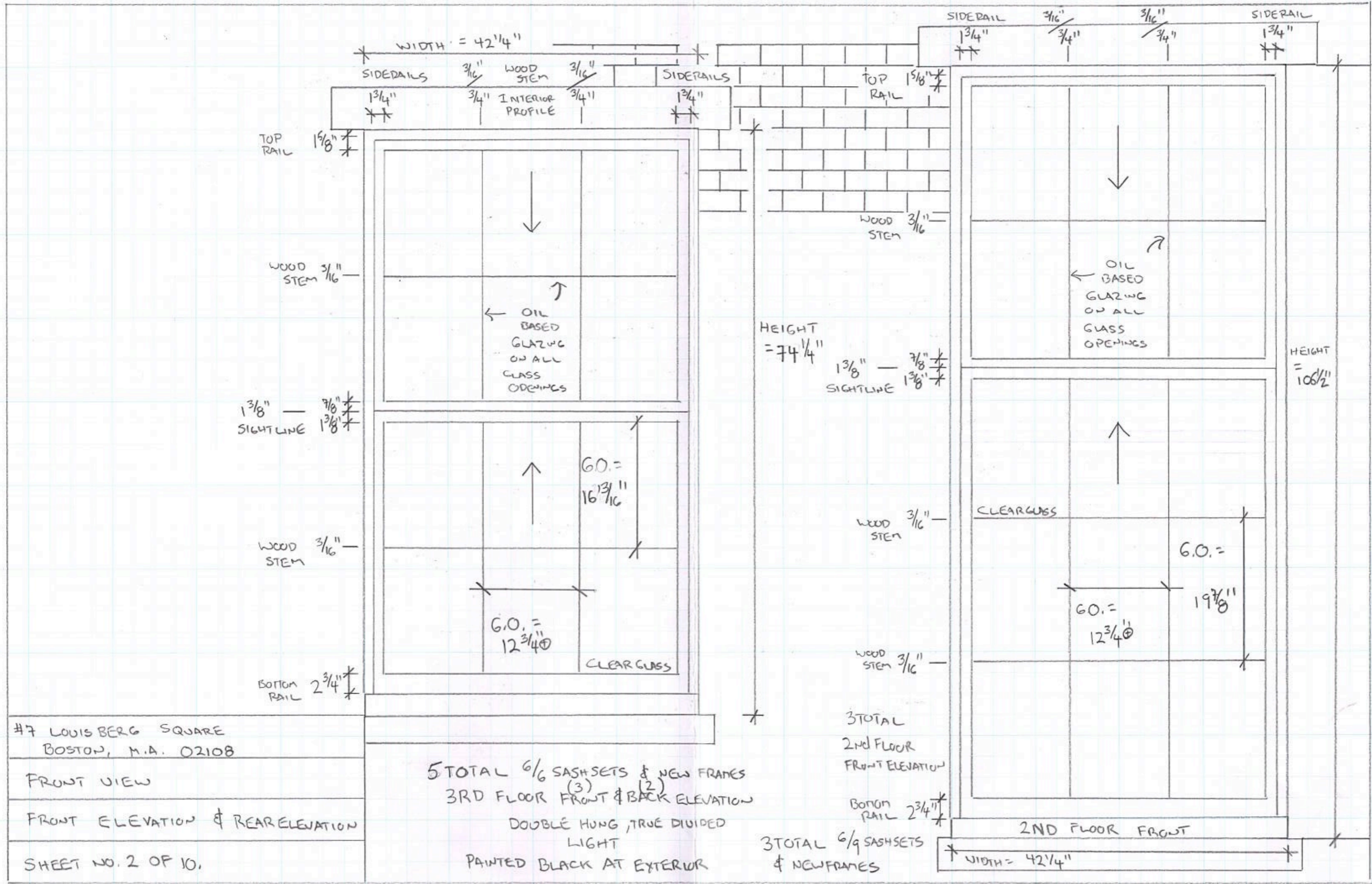
2 TOTAL 3/8 SASH SETS & NEW FRAMES
 DOUBLE HUNG, TRUE DIVIDED LIGHT
 1ST FLOOR FRONT

7 LOUIS BERG SQUARE
 BOSTON, M.A. 02108

FRONT VIEW

FRONT ELEVATION

SHEET NO. 1 OF 10.

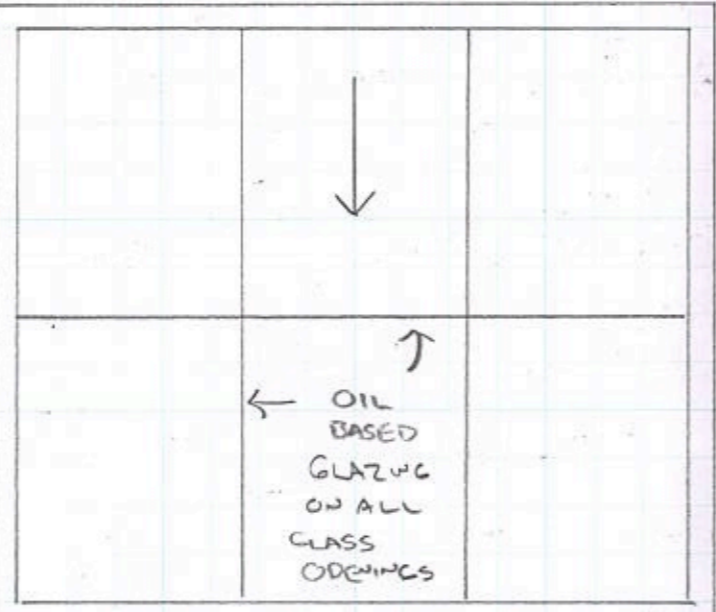


WIDTH = 42 1/4"

SIDERAILS 3/16" WOOD STEM 3/16" INTERIOR PROFILE 3/4" 1 3/4" 3/4" 1 3/4"

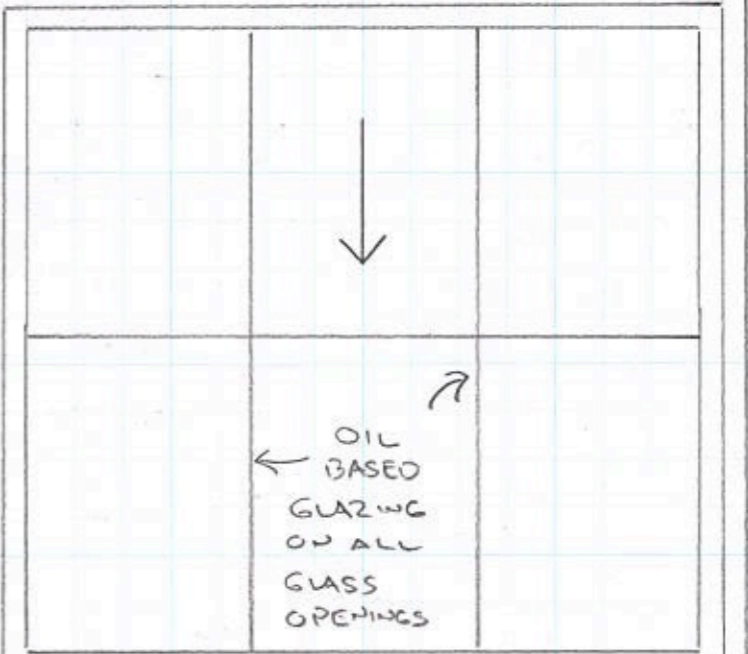
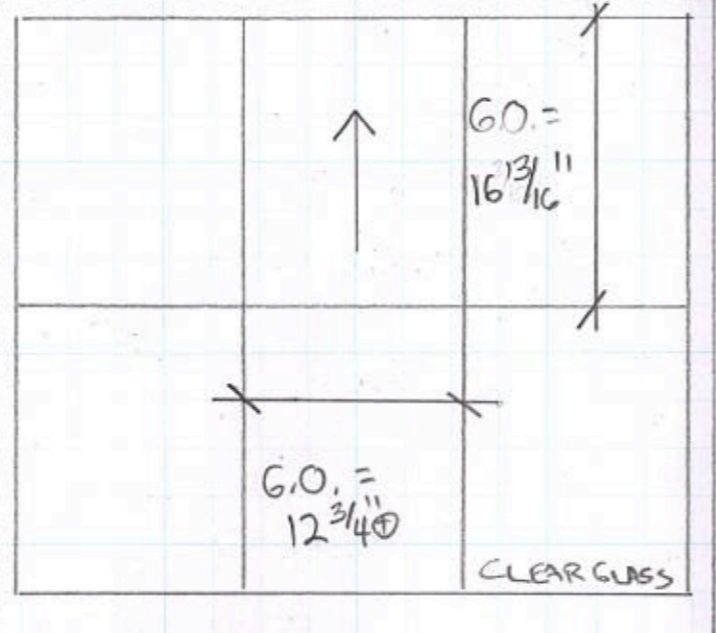
TOP RAIL 1 5/8"

SIDERAIL 3/16" 3/4" 3/16" 3/4" 3/16" 3/4" 3/16" 3/4" 3/16" 3/4"

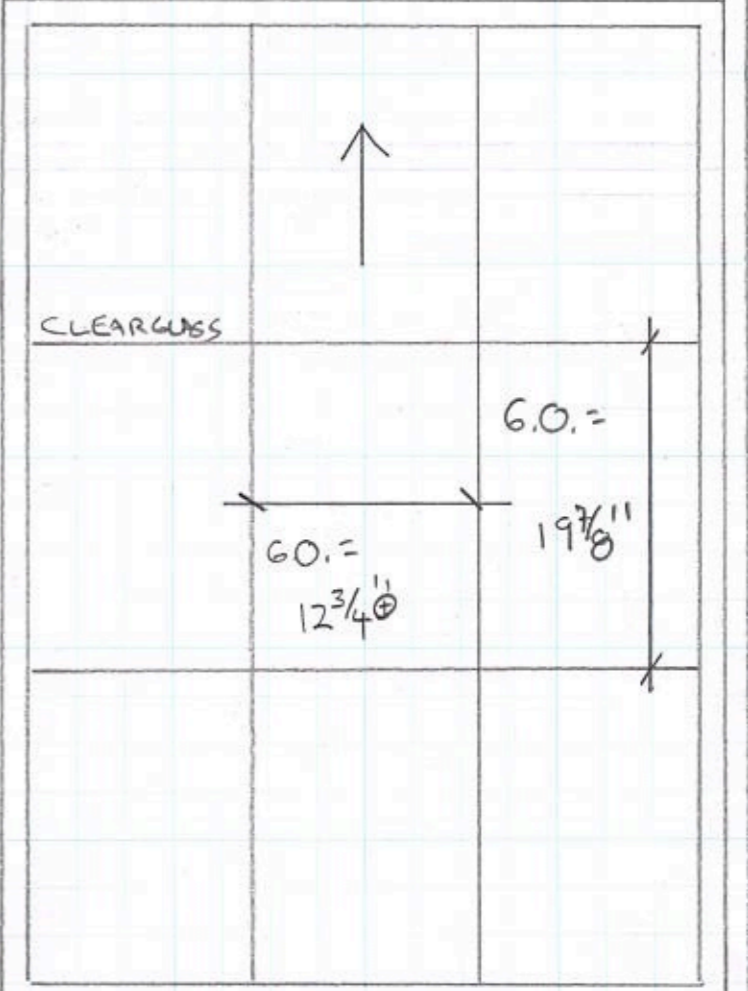


HEIGHT = 74 1/4"

1 3/8" SIGHTLINE 7/8" 1 3/8"



HEIGHT = 106 1/2"



#7 LOUIS BERG SQUARE
BOSTON, M.A. 02108

FRONT VIEW

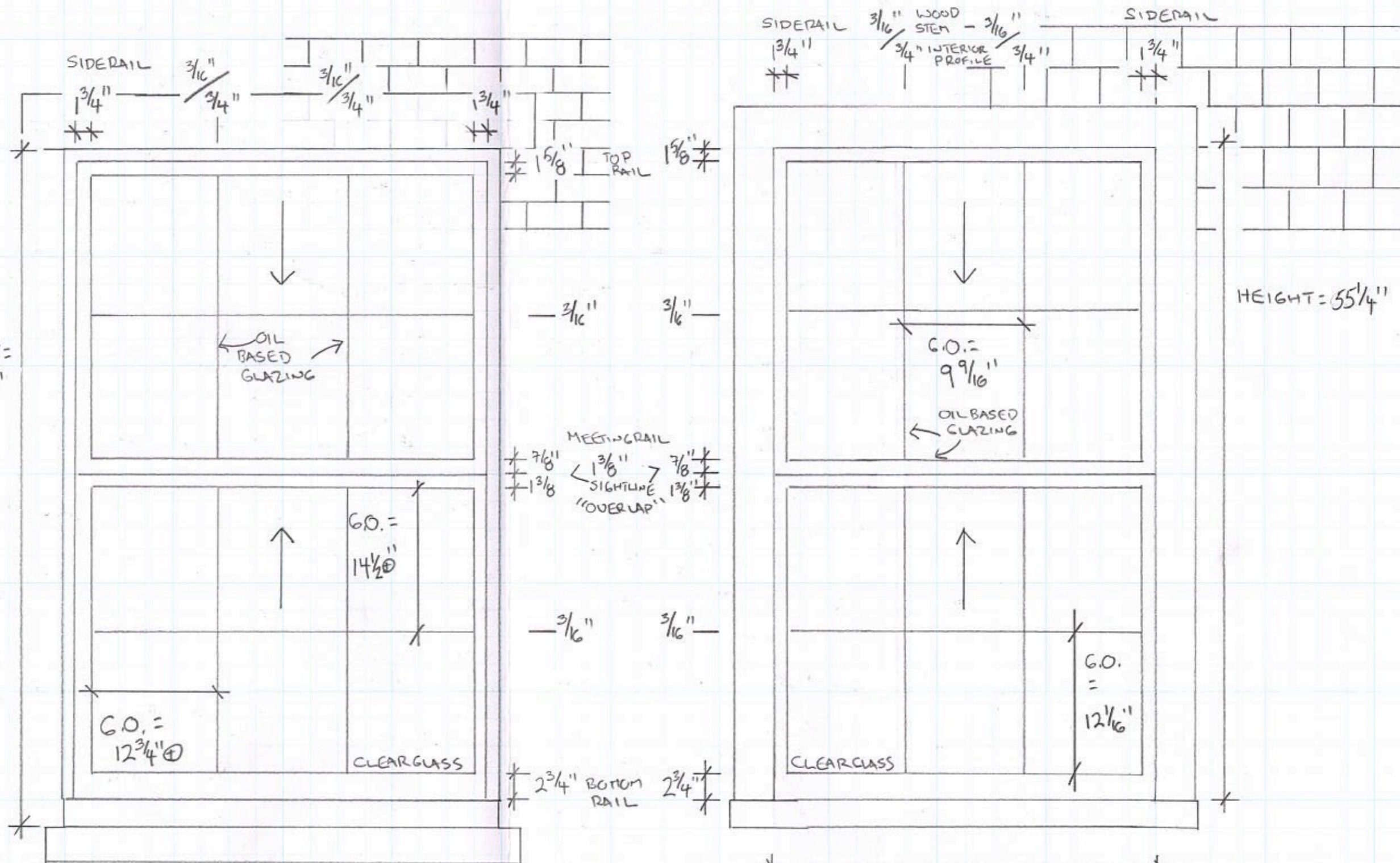
FRONT ELEVATION & REAR ELEVATION

SHEET NO. 2 OF 10.

5 TOTAL 6/6 SASHSETS & NEW FRAMES
3RD FLOOR FRONT & BACK ELEVATION
DOUBLE HUNG, TRUE DIVIDED LIGHT
PAINTED BLACK AT EXTERIOR

3 TOTAL 6/9 SASHSETS & NEW FRAMES
2ND FLOOR FRONT ELEVATION

2ND FLOOR FRONT
WIDTH = 42 1/4"



7 LOUISBERG SQUARE
BOSTON, M.A. 02108

FRONT VIEW

FRONT & REAR ELEVATION

SHEET NO. 3, OF 10.

WIDTH = $42\frac{1}{4}"$

4th FLOOR FRONT & REAR ELEVATION

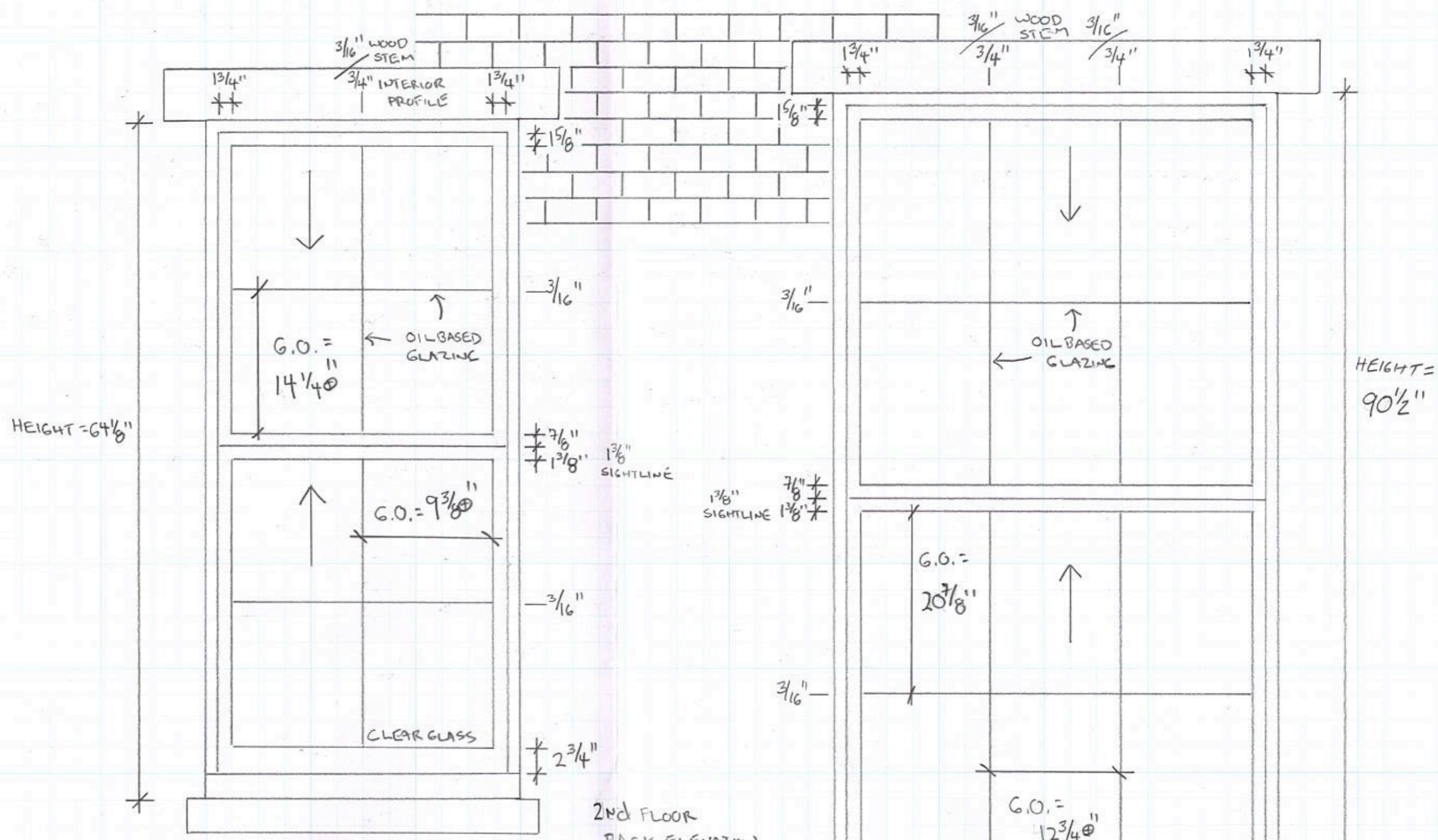
6 TOTAL $\frac{6}{16}$ SASHSETS & NEWFRAMES
DOUBLE HUNG, TRUE DIVIDED LIGHT

WIDTH = $32\frac{1}{2}"$

5th FLOOR BACK ELEVATION

3 TOTAL $\frac{6}{16}$ DOUBLE HUNG, TRUE
DIVIDED LIGHT

PAINTED BLACK AT EXTERIOR



#7 LOUIS BERG SQUARE
 BOSTON, M.A. 02108

FRONT VIEW

REAR ELEVATION

SHEET NO. 4 OF 10.

WIDTH = 22 1/2"

1 TOTAL 4/4 SASH SETS &
 NEW FRAMES DOUBLE HUNG,
 TRUE DIVIDED LIGHT

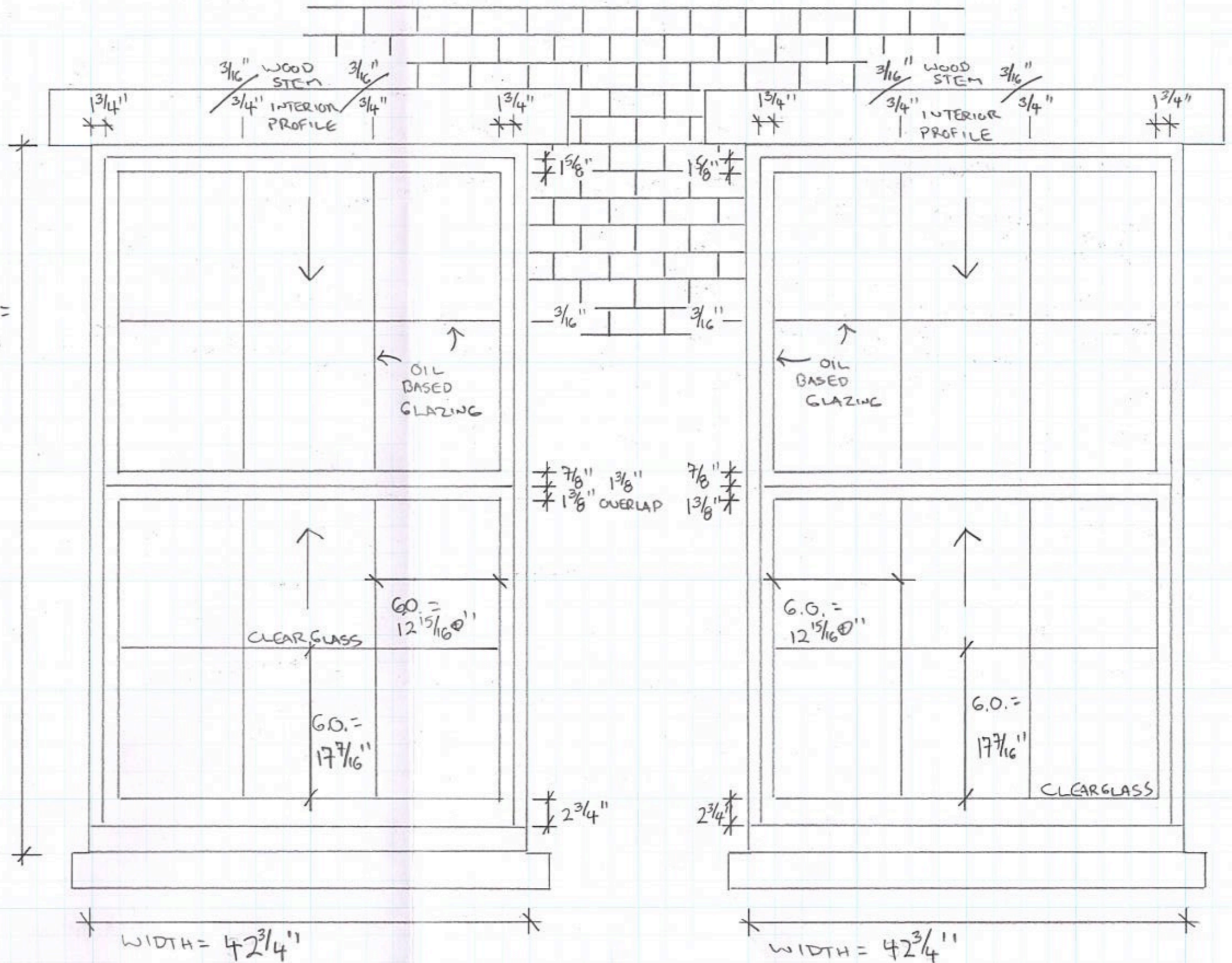
2ND FLOOR
 BACK ELEVATION

PAINTED BLACK AT
 EXTERIOR

WIDTH = 42 1/4"

1 TOTAL 6/6 SASH SET & FRAME
 DOUBLE HUNG, TRUE DIVIDED LIGHT

HEIGHTS =
76 3/4"



#7 LOUISBERG SQUARE
BOSTON, M.A. 02108

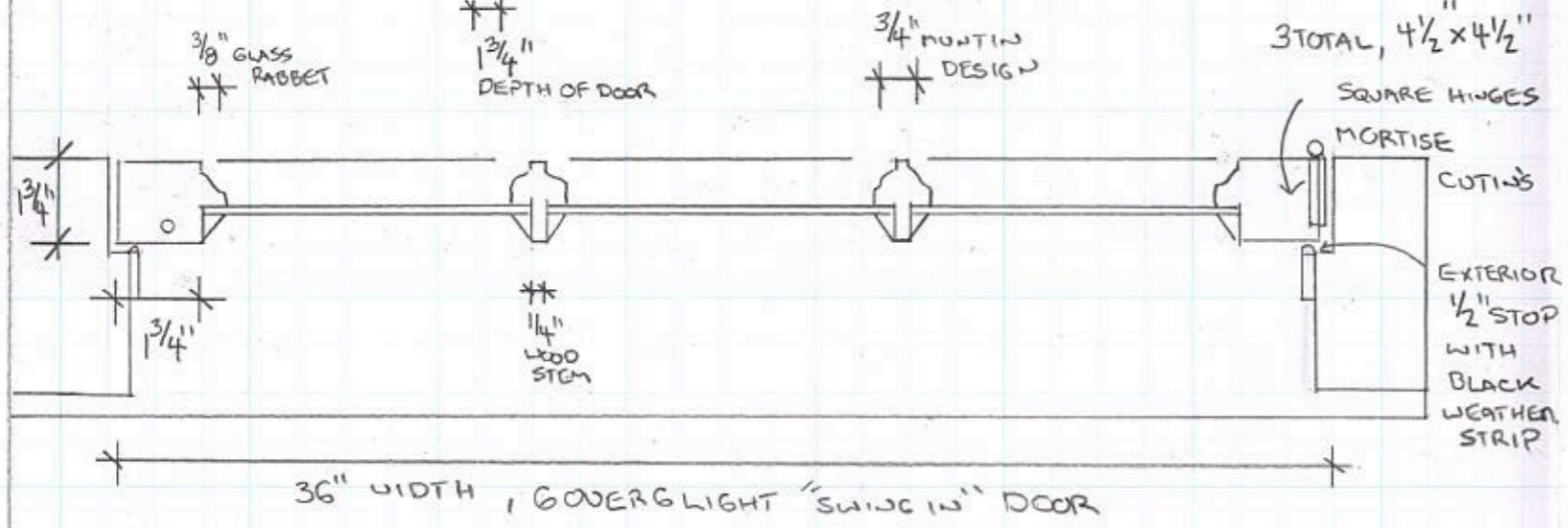
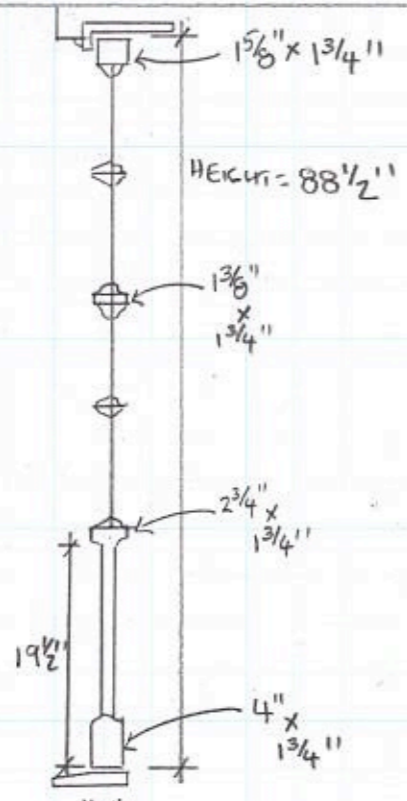
FRONT VIEW

REAR ELEVATION

SHEET NO. 5 OF 10.

2 TOTAL AT REAR ELEVATION "BACK L"
6/6 SASH SETS & NEW FRAMES
DOUBLE HUNG, TRUE DIVIDED LIGHT

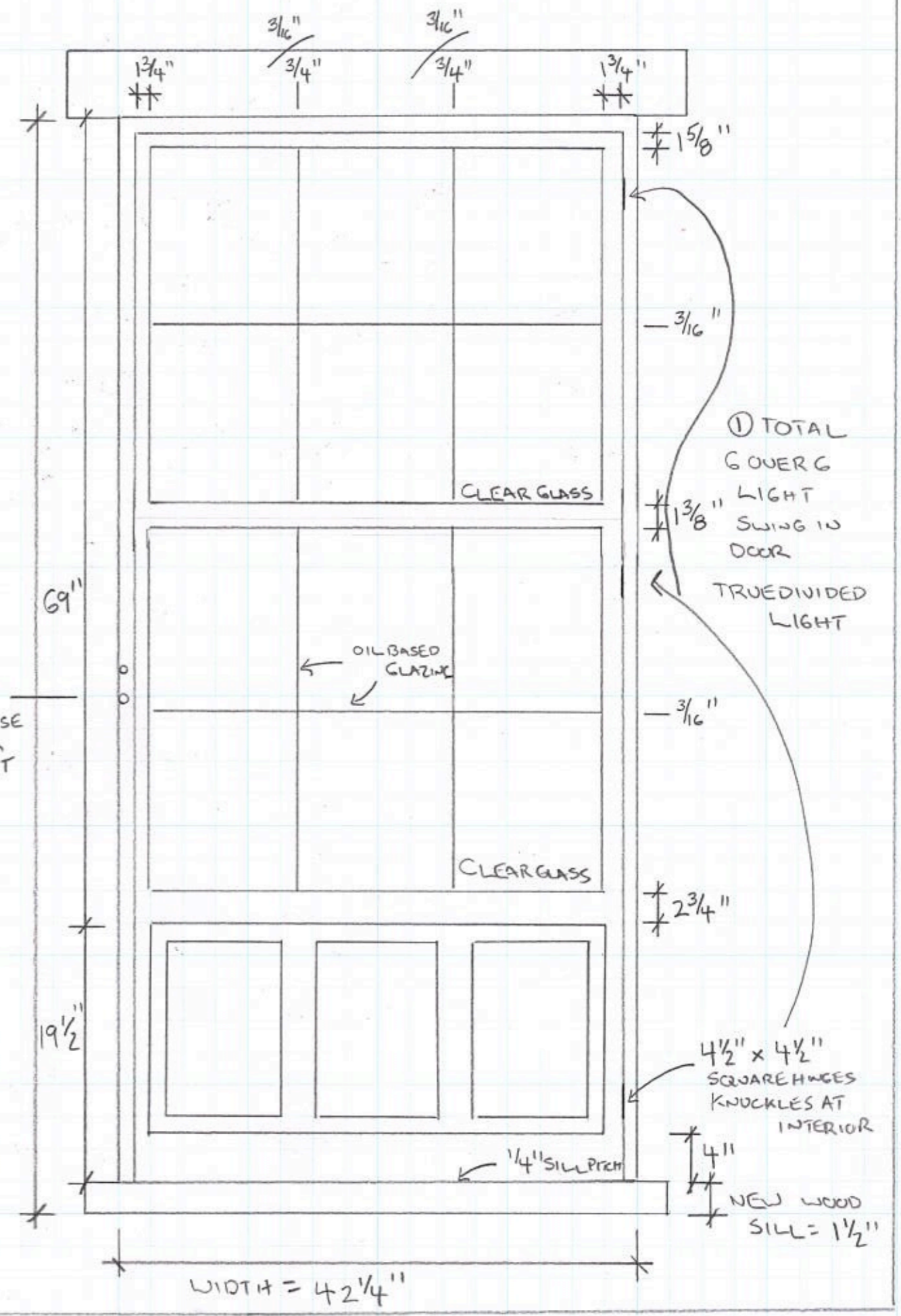
PAINTED BLACK AT
EXTERIOR



PAINTED TRI-CORNER BLACK AT EXTERIOR

#7 LOUISBERG SQUARE
 BOSTON, M.A. 02108
 FRONT VIEW
 BACK ELEVATION
 SHEET NO. 6 OF 10.

HEIGHT = 88 1/2"

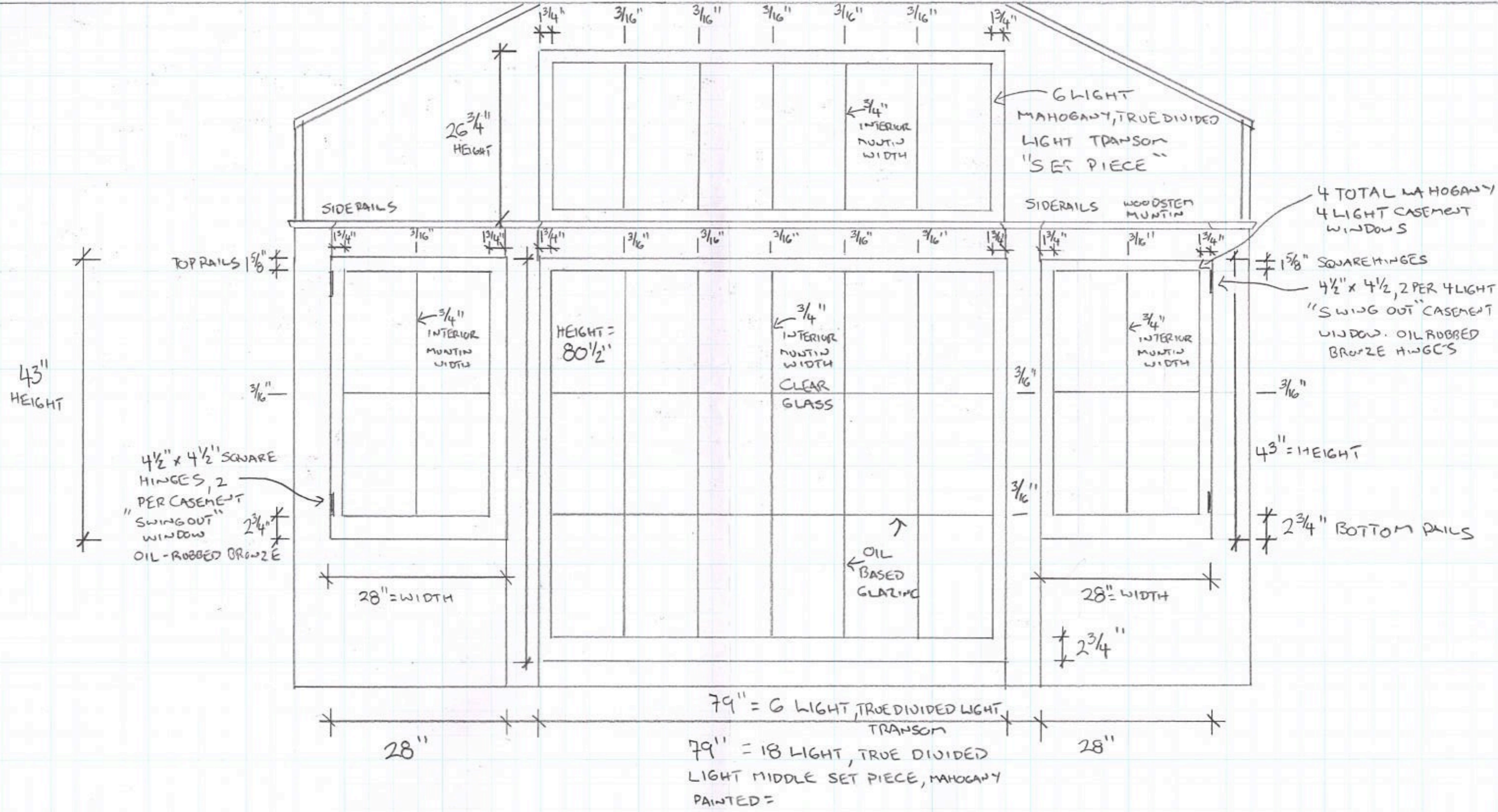


① TOTAL OVERGLIGHT SWING IN DOOR
 TRUEDIVIDED LIGHT

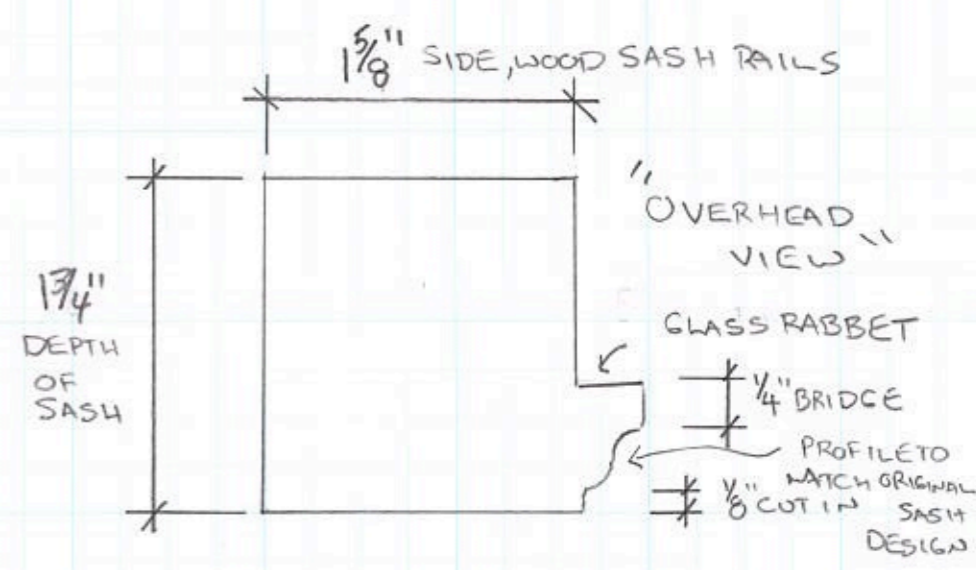
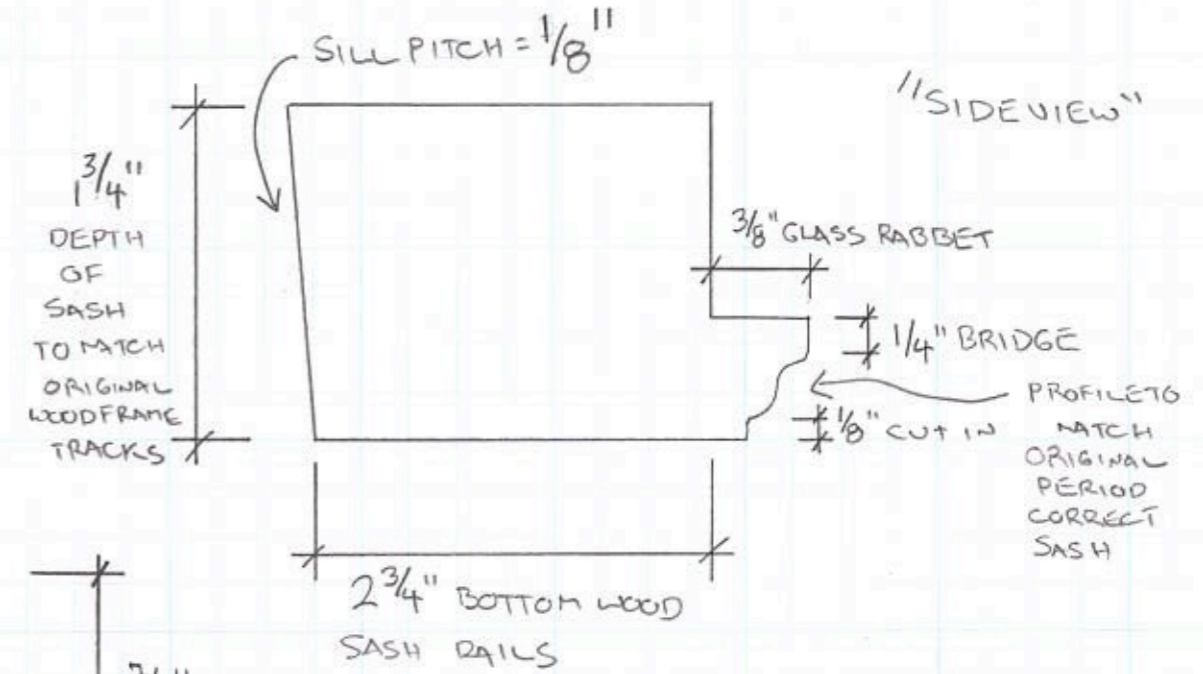
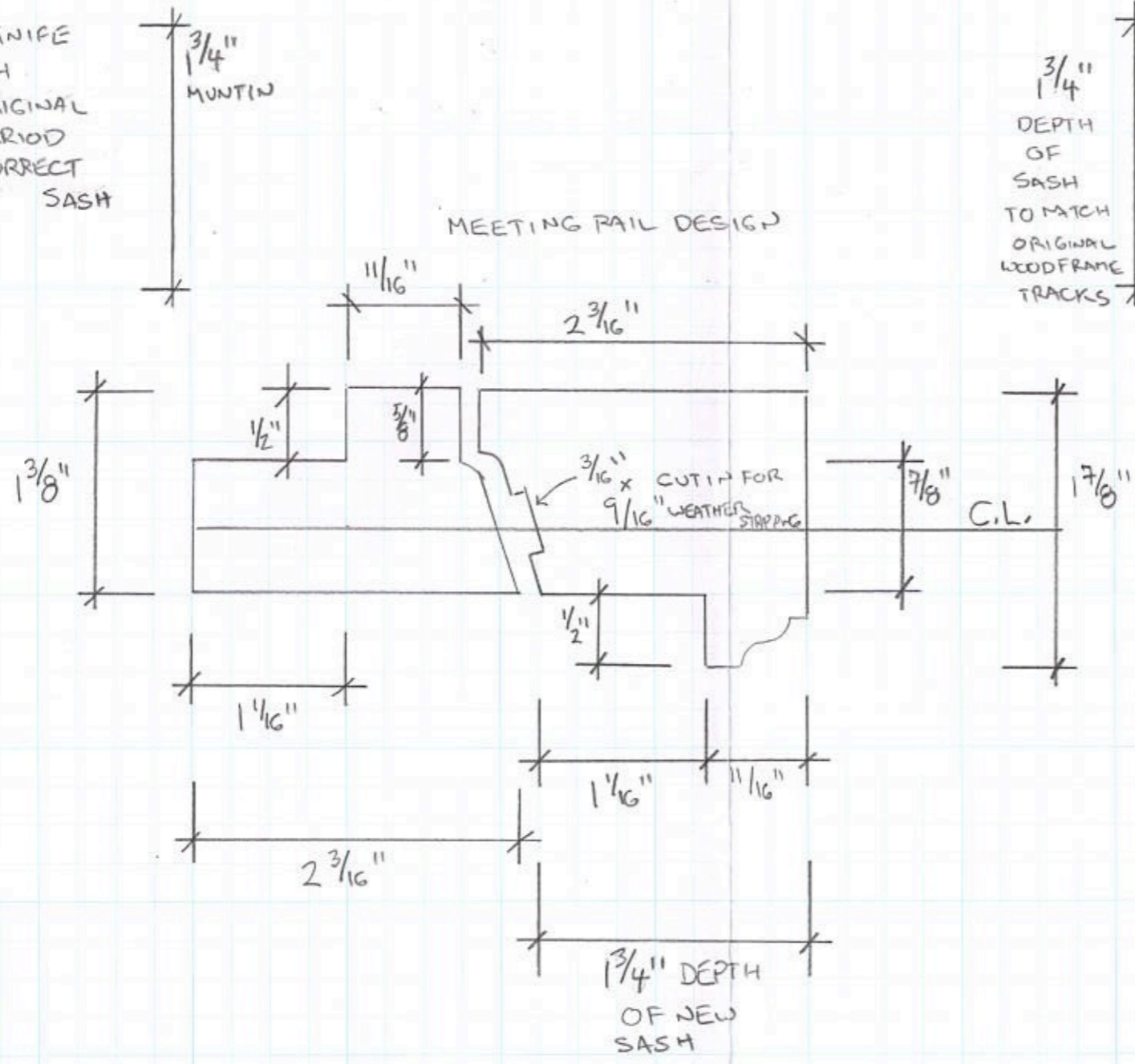
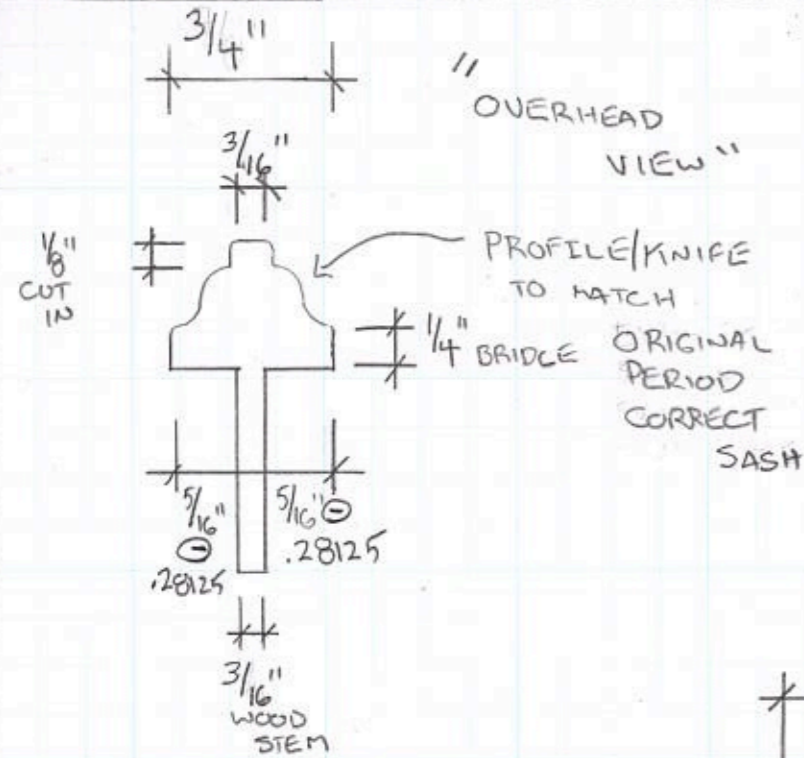
4 1/2" x 4 1/2" SQUARE HINGES KNUCKLES AT INTERIOR

NEW WOOD SILL = 1 1/2"

WIDTH = 42 1/4"



#7 LOUIS BERG SQUARE
 BOSTON, M.A. 02108
 FRONT VIEW
 FRONT ELEVATION / 5TH FLOOR
 SHEET NO. 7 OF 10.



"SIDE VIEW"

#7 LOUIS BERG SQUARE
 BOSTON, MA, 02108

SIDEVIEW & OVERHEAD VIEW

CUT AWAY OF SASH RAILS/MUNTIN

SHEET NO. 8 OF 10.

Historic Window & Door Holdings
 12 Forest Road, Junction 123&123A
 P.O. Box 138
 Alstead, N.H. 03602-0138

(FRONT) (BACK)

| | |
|----------------------------------|------------------------------|
| 6/6 1ST FLOOR HEIGHTS = 81 1/8" | 6/6 1ST FLOOR = 64 1/8" |
| 6/9 2ND FLOOR HEIGHTS = 105 1/2" | 6/6 2ND FLOOR = 84", 64 1/8" |
| 6/6 3RD FLOOR HEIGHTS = 69 1/8" | 6/6 3RD FLOOR = 69 1/8" |
| 6/6 4TH FLOOR HEIGHTS = 61 3/4" | 6/6 4TH FLOOR = 61 3/4" |
| | 6/6 5TH FLOOR = 62 1/4" |

1ST FLOOR WIDTHS = 42 1/4"
 2ND FLOOR WIDTHS = 42 1/4"
 3RD FLOOR WIDTHS = 42 1/4"
 4TH FLOOR WIDTHS = 42 1/4"

1" x 1/2"
 NEW WOOD PARTING BEADS

1/2" INTERIOR BULLNOSE WOODSIDE STOP

3/4" MUNTIN WIDTH

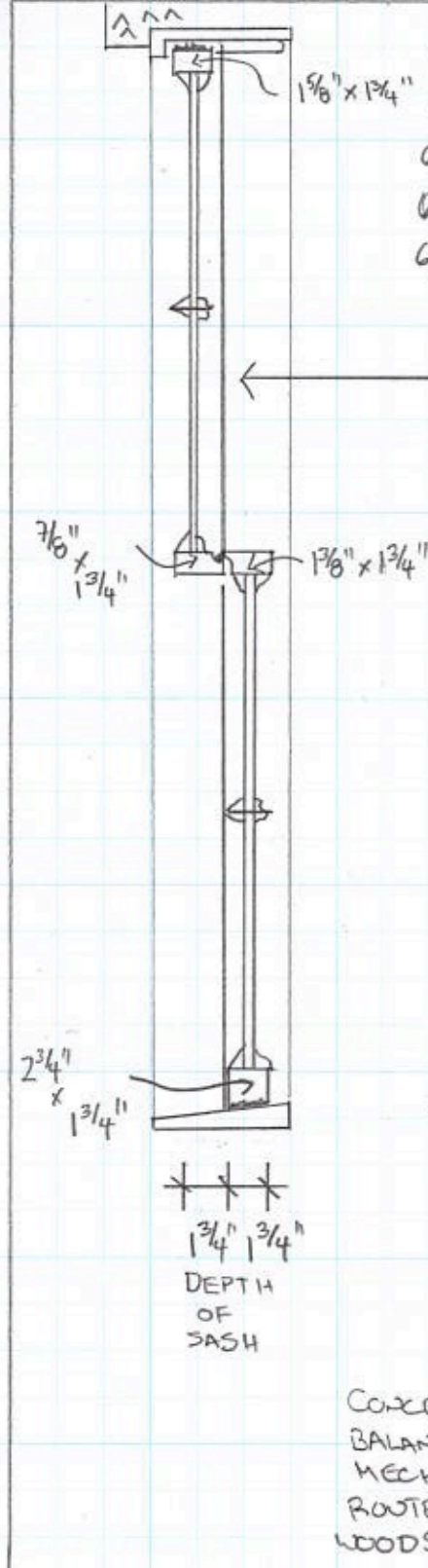
DARK BRONZE (BLACK) AIRSPACES

CLEAR GLASS

45° GLAZING BEAD = OILBASED HAND GLAZED

WOOD SILL TO REMAIN

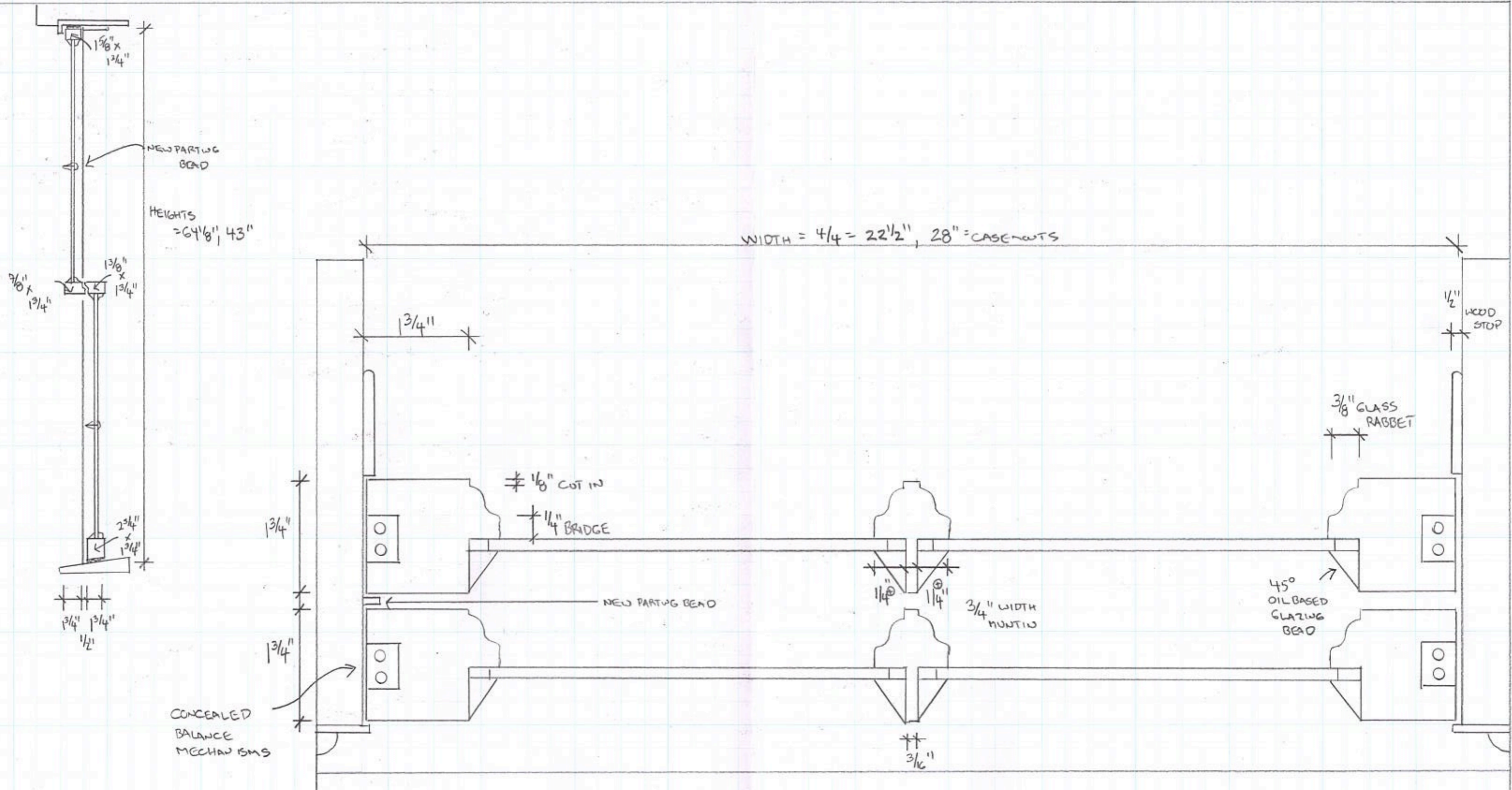
NEW FRAMES & BRICKMOLD TO MATCH ORIGINAL & EXISTING



7 LOUIS BERG SQUARE
 BOSTON, M.A. 02108
 6/6, 6/9 DOUBLE HUNG, WOOD TRUE DIVIDED LIGHT
 OVERHEAD & SIDEVIEW
 SHEET NO. 9 OF 10.

Historic Window & Door Holdings
 12 Forest Road, Junction 123&123A
 P.O. Box 138
 Alstead, N.H. 03602-0138

NEW WOOD, TRUE DIVIDED LIGHT WINDOWS, PAINTED TRI-CORN BLACK AT EXTERIOR, USING CLEAR GLASS OIL BASED GLAZING



#7 LOUIS BERG SQUARE
 BOSTON, M.A. 02108
 4/4 DOUBLE HUNG, 4 LIGHT CASEMENT, WOOD
 TRUE DIVIDED LIGHT
 OVER HEAD & SIDE VIEW
 SHEET NO. 10 OF 10.

NEW, WOOD, TRUE DIVIDED LIGHT
 WINDOWS, PAINTED BLACK AT EXTERIOR