

Improvements to
CLARENDON TOT LOT



MEETING RECORDING



The Boston Parks and Recreation Department will be recording the meeting and posting to our project webpage for those who are unable to attend the Zoom meeting live.

It is possible that participants may also be recording the meeting with their phones cameras or other devices. If you do not wish to be recorded during this meeting, please keep your microphone and camera off.

VIRTUAL MEETING ETIQUETTE

We want to ensure this conversation is a pleasant experience for all and that all community members/ stakeholders are comfortable sharing their comments, questions and feedback.

Please be respectful and mindful of each other's time when asking questions/ providing comments, so that all attendees are able to participate in the meeting.

Keep questions/ comments project-specific and not personal to yield solution-driven discussion.

Please wait until all attendees have had the opportunity to ask a question/ provide a comment before providing additional questions/ comments.

You can always set up a conversation with **Nathan Frazee**, Nathan.Frazee@boston.gov to further discuss the project or process.

ZOOM TIPS

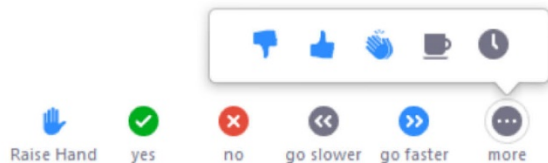
Here is how you can participate during the question and answer part of the presentation.

DURING THE PRESENTATION:



VIA WEB:

Turn video on / off.



To use these non-verbal options click on participants (bottom of screen); these options will pop up in side bar.

DURING THE Q&A:



JOINING VIA PHONE?

Use *9 to raise hand to ask for audio / video permission to ask questions or provide comments.



VIA WEB:

Chat to ask questions / comments or provide responses to poll questions



Raise hand to ask for audio / video permission to ask questions or provide comments.

AGENDA

1

INTRODUCTIONS & BACKGROUND

2

SITE ANALYSIS & WHAT WE HEARD

3

OVERALL CONSIDERATIONS

4

PREFERRED PLAN

5

LISTENING & DISCUSSION

6

CLOSING REMARKS & NEXT STEPS

PROJECT TEAM

Nathan Frazee

Project Manager

Nathan.frazee@boston.gov or 617-961-3167

Christine Brandao

Outreach Coordinator, External Affairs

christine.brandao@boston.gov or 617-961-3006

Shanice Pimentel

Office of Neighborhood Resources

shanice.pimentel@boston.gov or 617-635-2679

Cheri Ruane, FASLA, RLA

Practice Leader, Landscape Architecture
Weston & Sampson

Cassie Bethoney, RLA

Senior Landscape Architect and Project Manager
Weston & Sampson



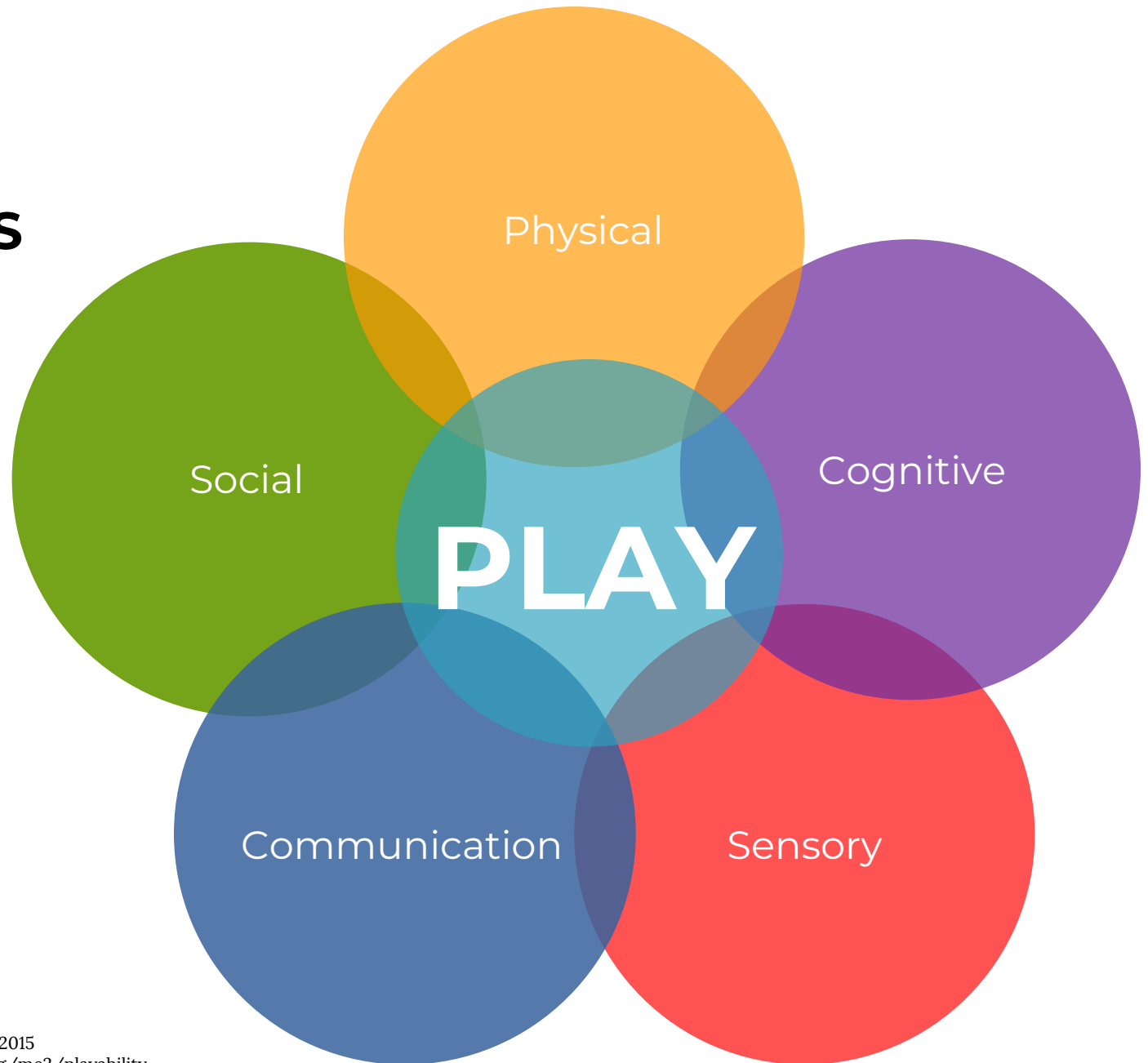
PROJECT SCHEDULE & FUNDING

\$ 1,530,000 Capital Funding





THE **5** ELEMENTS OF PLAY



SOCIAL/ EMOTIONAL

COOPERATION, DRAMATIC +
IMAGINATIVE PLAY



SEATING + TABLE AREAS,
THEMATIC PLAY ELEMENTS
(SHIPS), PLAY HOUSES

PHYSICAL

GROSS MOTOR/ FINE MOTOR SKILLS,
FLEXIBILITY, ACCESSIBILITY,
HEALTHY RISK + VARIETY



DISH SWINGS, MOVEABLE
OBJECTS, SWINGS, MONKEY
BARS, BALANCE

SENSORY

TOUCH, VISUAL. AUDITORY, SMELL
VESTIBULAR, PROPRIOCEPTIVE +
INTEROCEPTIVE



PUSH/ PULL ELEMENTS
WATER ELEMENTS, VARIED
TEXTURES + COLORS, SPINNING,
MOVEABLE OBJECTS, ROCKING

COGNITIVE

CREATIVITY, SENSE OF
ACCOMPLISHMENT, PROBLEM-
SOLVING, CAUSE + EFFECT, RISK
ASSESSMENT



INTERACTIVE WATER
ELEMENTS, ROPE CLIMBER,
LINKED PLAY ELEMENTS

COMMUNICATION

DEVELOPMENT OF RECEPTIVE +
EXPRESSIVE LANGUAGE



TALK TUBES, SLIDES, THEMATIC
PLAY ELEMENTS, TRIKE TRACK,
SEE SAWS

SITE HISTORY



260 Clarendon (ca. 1873), courtesy of the Bostonian Society



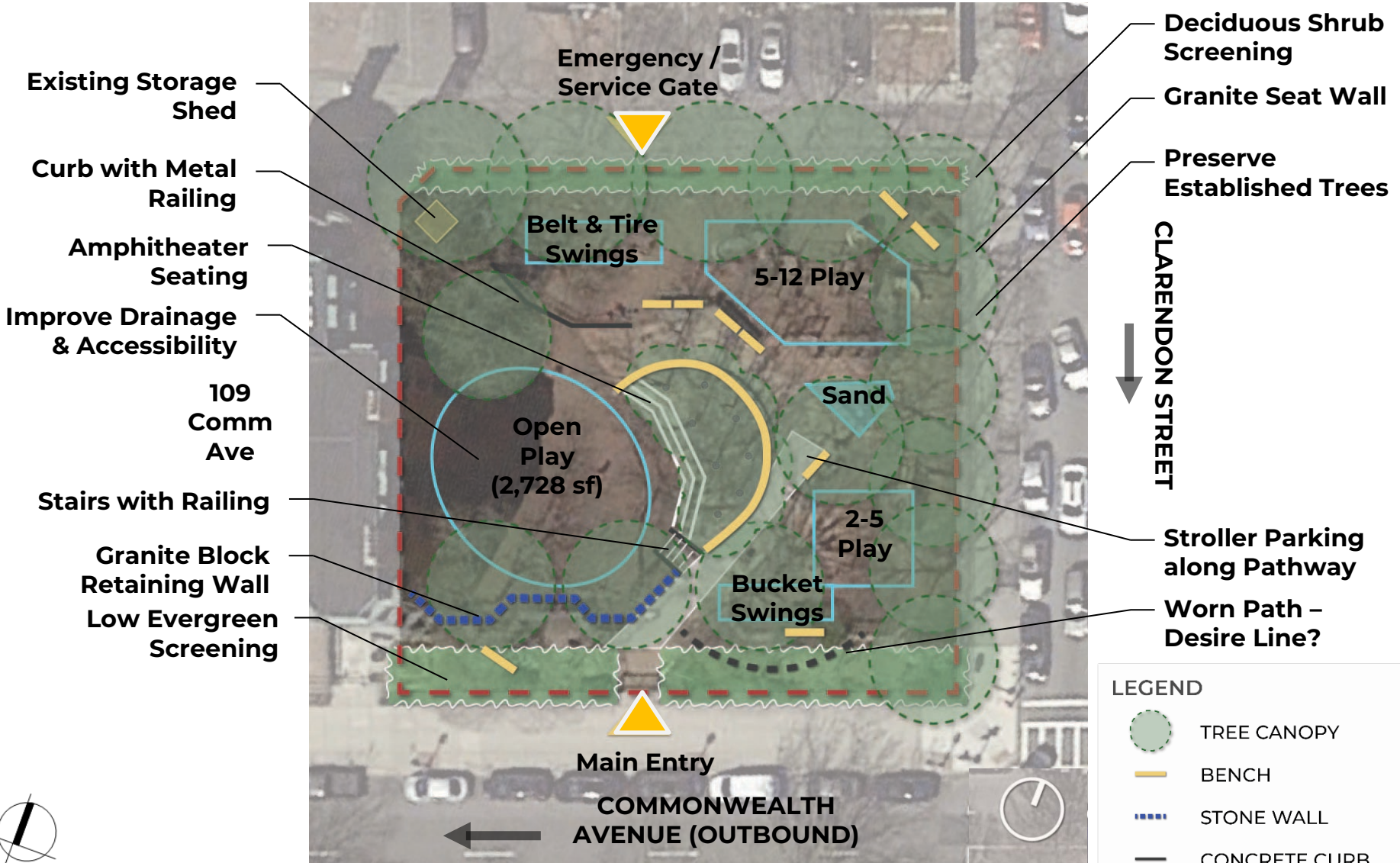
260 Clarendon (99 Commonwealth) (ca. 1942), photograph by Bainbridge Bunting, courtesy of The Gleason Partnership



North side of Commonwealth looking east, with 109-111 Commonwealth in foreground on left Commonwealth (ca. 1890); courtesy of Barry and Judith Solar

OVERALL SITE ANALYSIS

PUBLIC ALLEY 424



WHAT WE HEARD SO FAR

The **service gate/emergency access along the alley can be shifted**. It does not need paved access into the park. Add clear signage.

PARK AMENITIES

Modify the fence to mitigate head entrapment issues.

Add low level lighting for use in early evenings

Add a community bulletin board

City kids have little access to nature itself, so keeping the existing **natural elements - vegetation, trees, ground level discovery areas as tactile play - is critical**.

PLANTINGS & AESTHETICS

Ensure all plantings are hardy and protected.

“Preserve the flavor of the playground” – the park’s aesthetic should fit seamlessly into the neighborhood (e.g. natural color scheme, green and open)

PLAY VALUE

Maximize the play value of the space. Musical instruments and water play were not endorsed.

Kids of all ages use the park and the local schools bring students to the park on a coordinated schedule for play. **The play equipment needs to be able to handle rigorous use from all ages** and construction should work around the school year schedule.

OPEN PLAY

Keep open play separated and at the lower level. Maintain as large an area for open play as possible. Keep 2-5 year and 5-12 year play separated.

The **open play area is extremely important and central to this space** as a freeform play area and community space for neighborhood events.

WHAT WE HEARD

All plantings will need to be bullet proof and tough for active play, but needs to maintain visibility from the street.

This is a former building foundation now used as a kick wall and an important element of the park for kick ball.


Protect the sensitive tree roots of this core grove of trees.

Designated stroller parking is a must have, off the main circulation route.




WHAT WE HEARD

PARK AMENITIES
PLAY VALUE
OPEN PLAY
PLANTINGS & AESTHETICS




Ensure compliant play surfacing (fixed)




Ensure each piece of play equipment provides **accessible and inclusive play** and many kinds of play value



Maintain sensory play elements that are open and freeform



Preserve the established tree canopy throughout



Preserve as much **open play** as possible



Be sensitive to 109 Comm Ave's facade



Improve drainage in this area



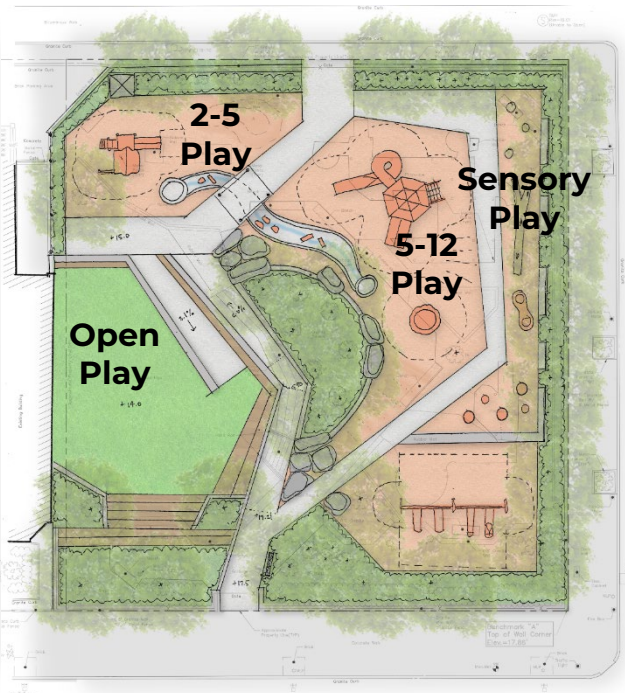
Incorporate The Learning Project's etched stones.

CONCEPT PLAN ALTERNATIVES

CONCEPT A

CONCEPT B

CONCEPT C



OVERALL CONSIDERATIONS



Incorporate synthetic turf in the open play area with the look and feel of real grass.



Poured-in-place rubber surfacing will have a natural color scheme.



Create gateways and defined spaces with changes in material.



Use interesting and natural pathway materials for texture and discovery.

OVERALL CONSIDERATIONS



Use natural materials and build play into the elevational changes of the playground.

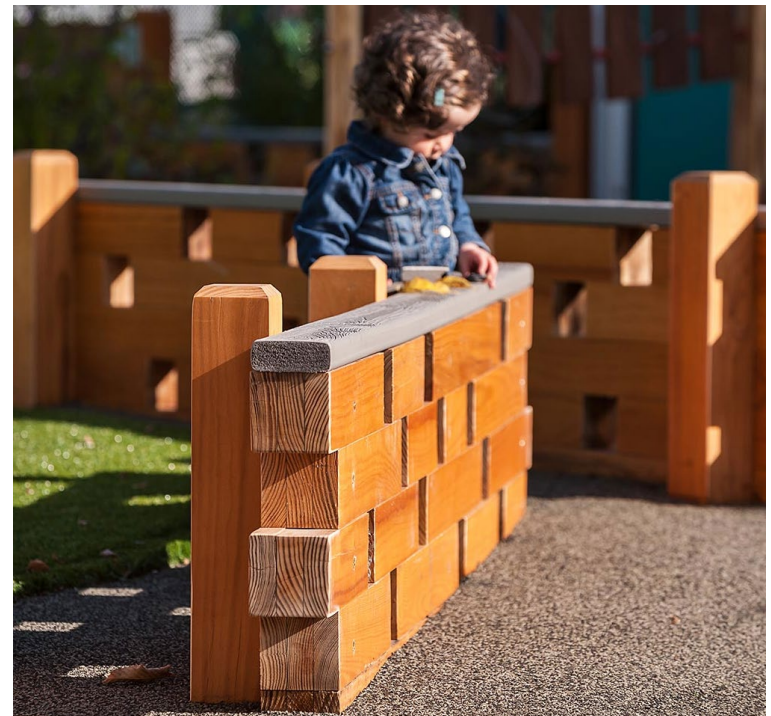


Create play value with natural materials.

OVERALL CONSIDERATIONS

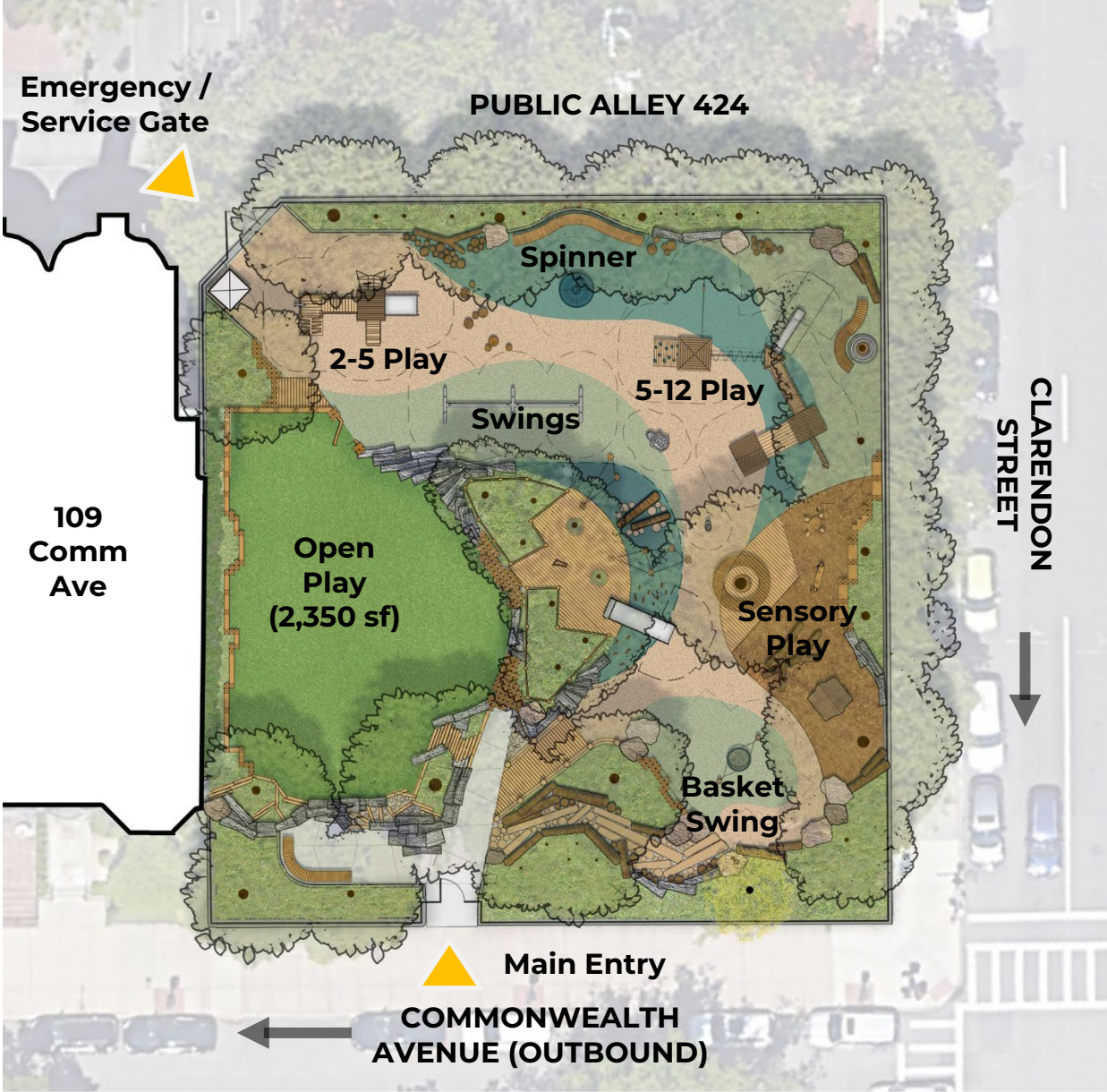


Seating should fit in aesthetically with the natural play theme and the neighborhood feel.

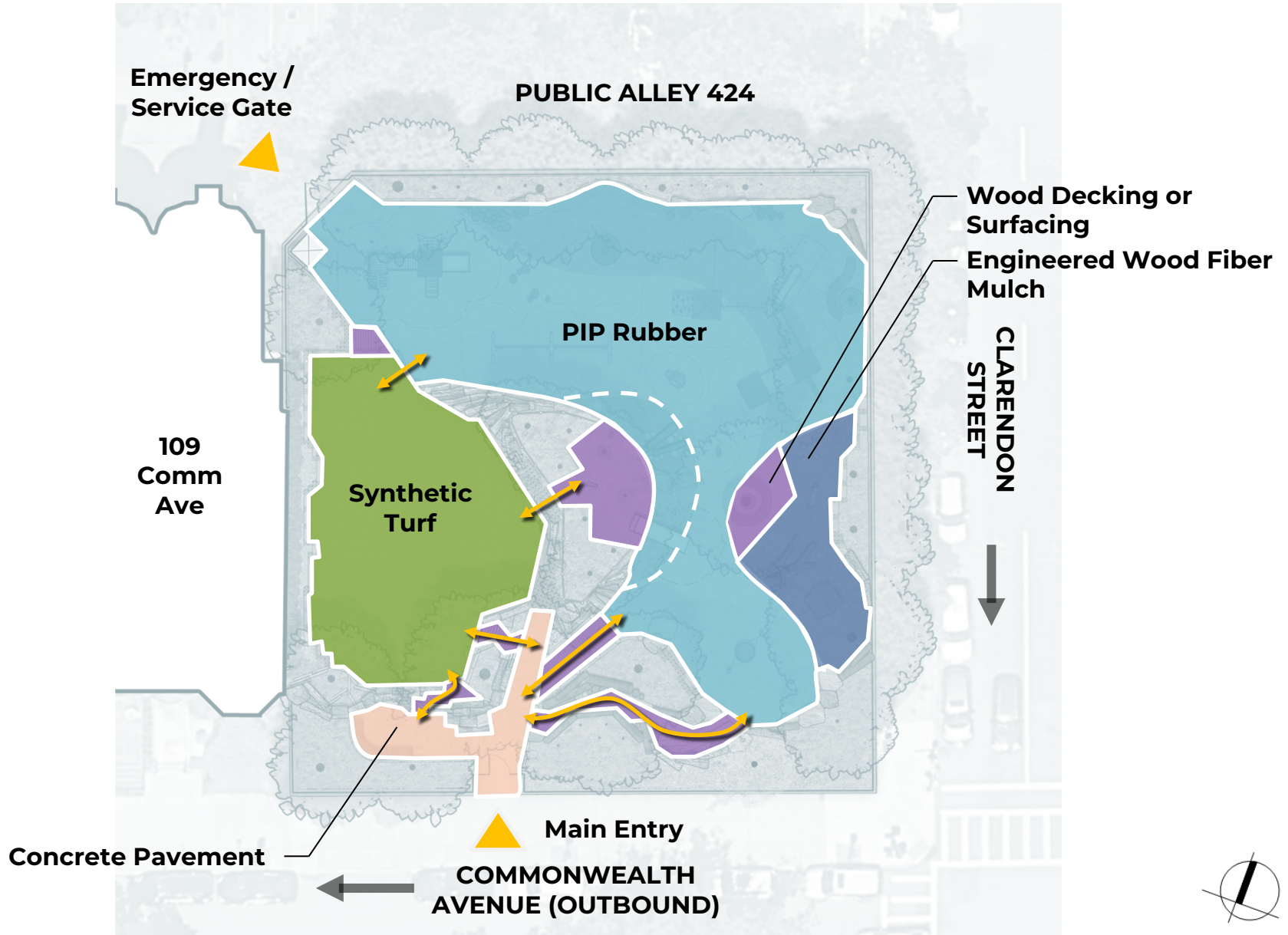


Delineate the different play spaces with elements that add play value.

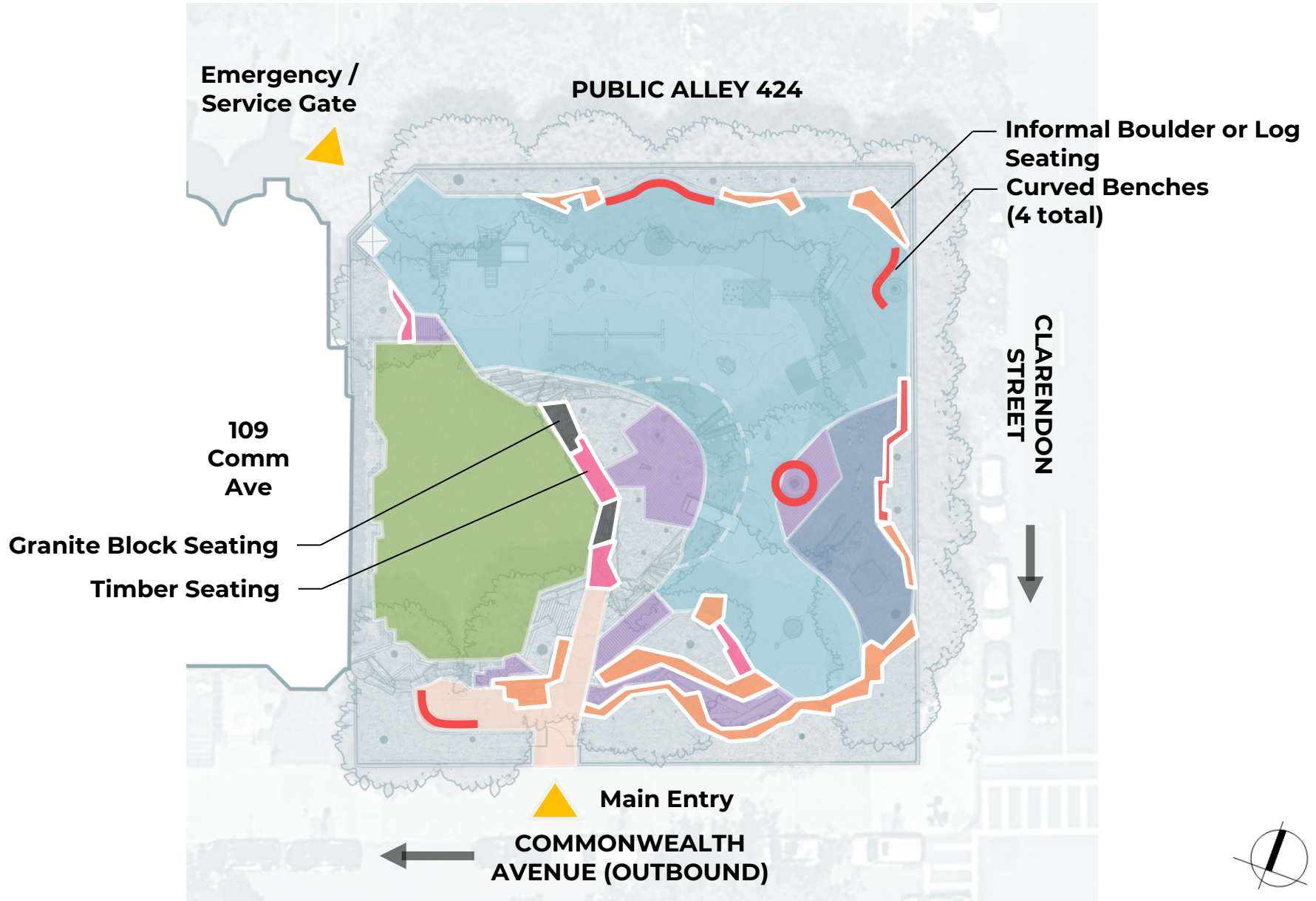
PREFERRED PLAN



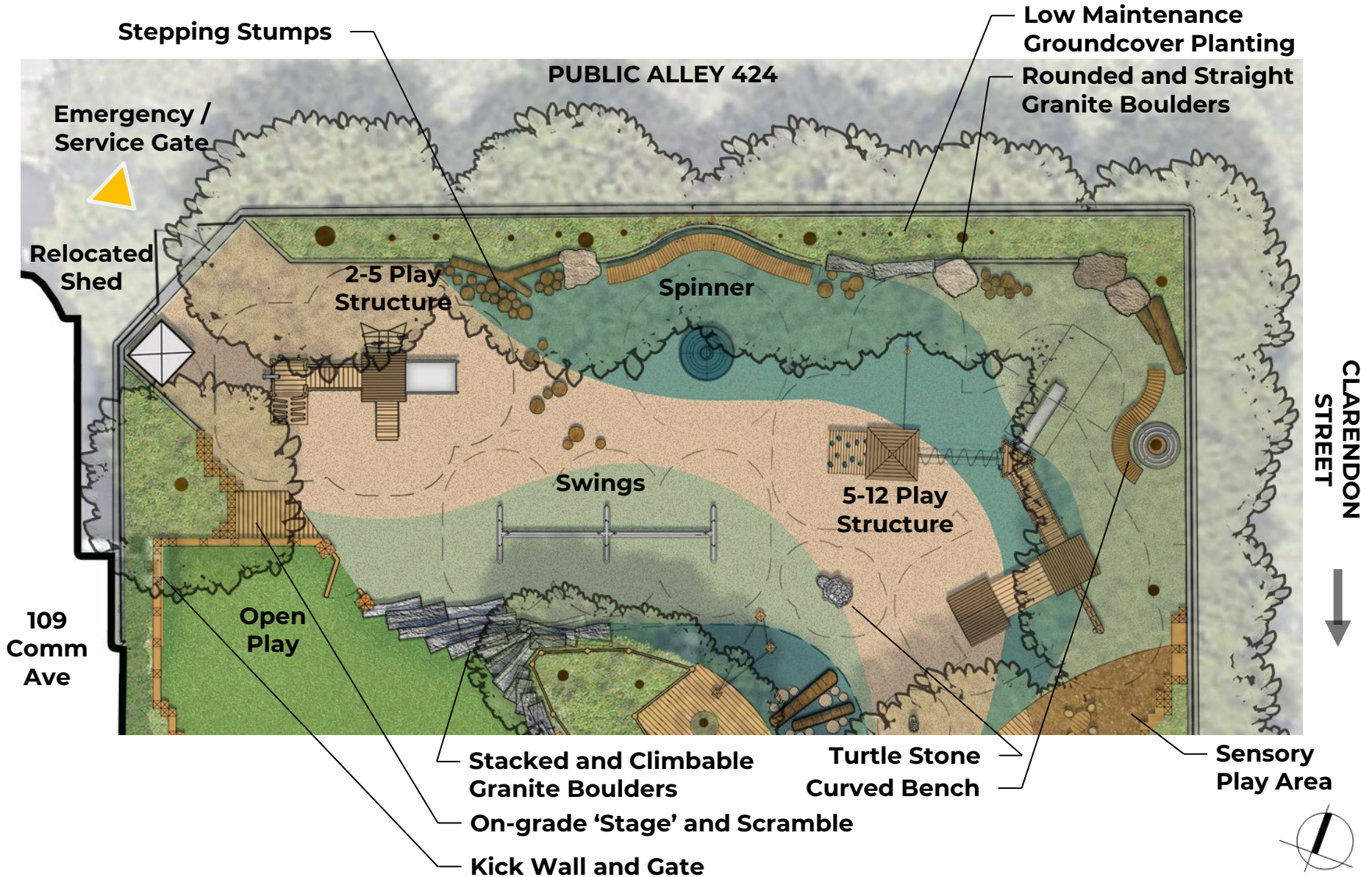
PREFERRED PLAN – CIRCULATION



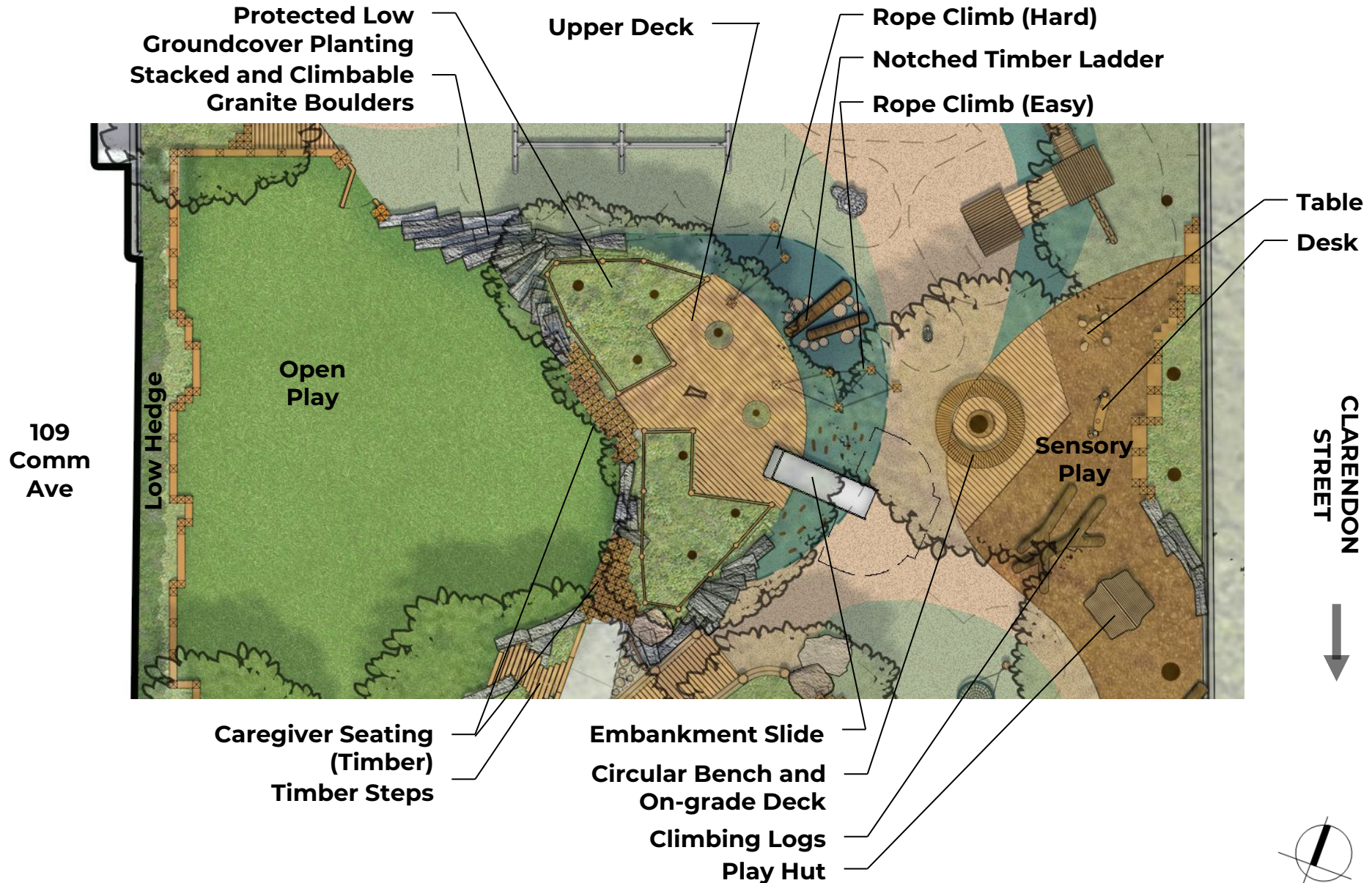
PREFERRED PLAN – SEATING AREAS



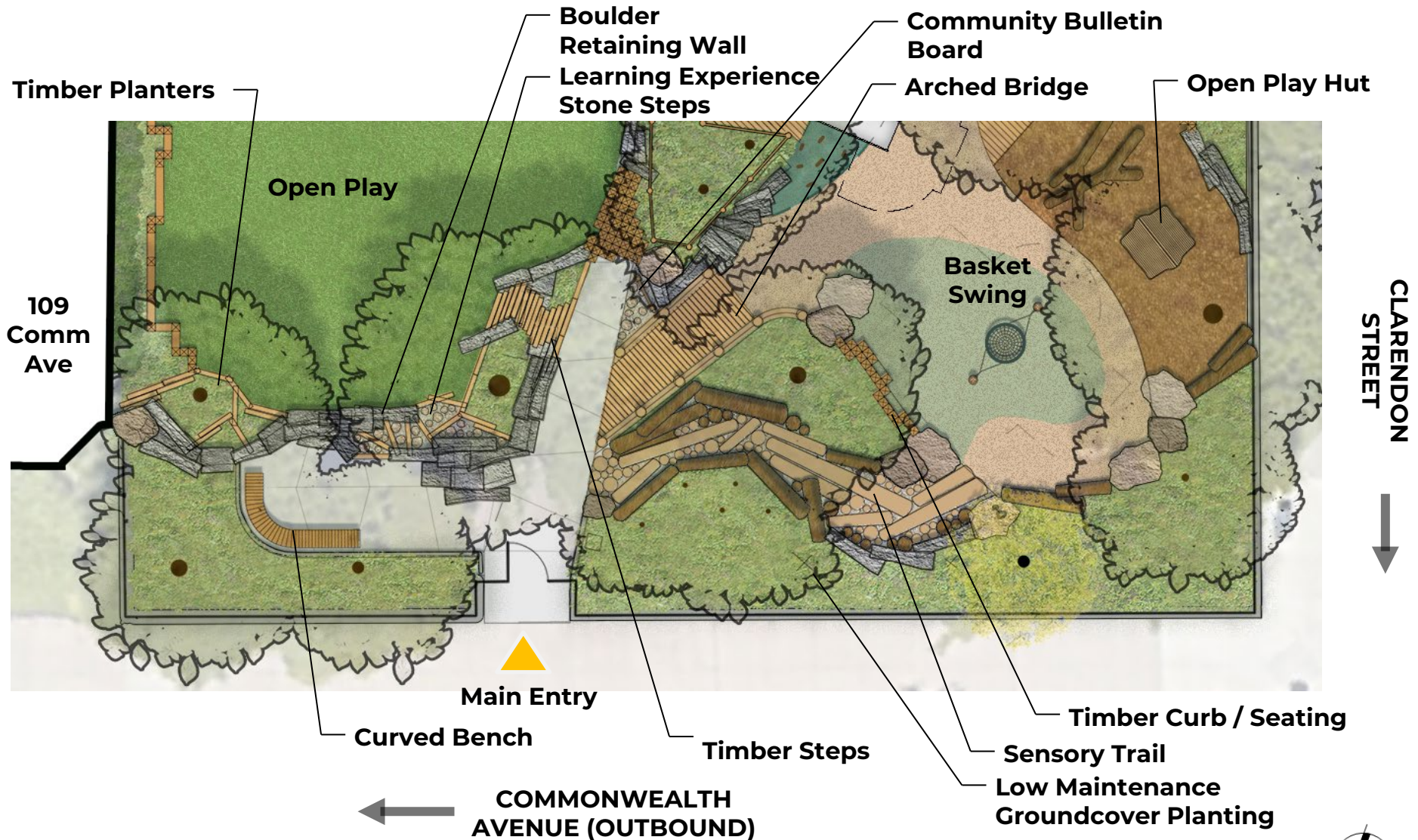
PREFERRED PLAN ENLARGEMENT



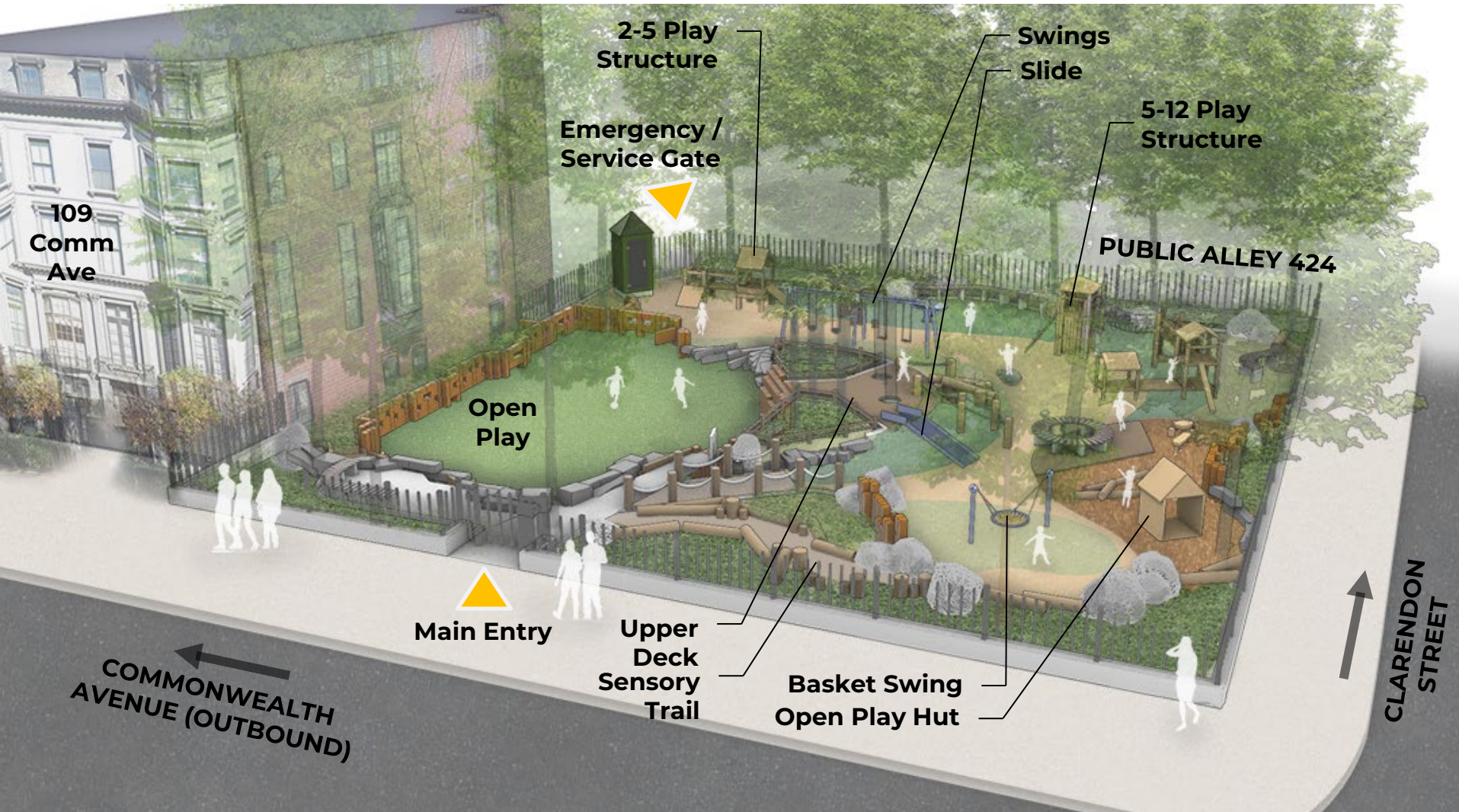
PREFERRED PLAN ENLARGEMENT



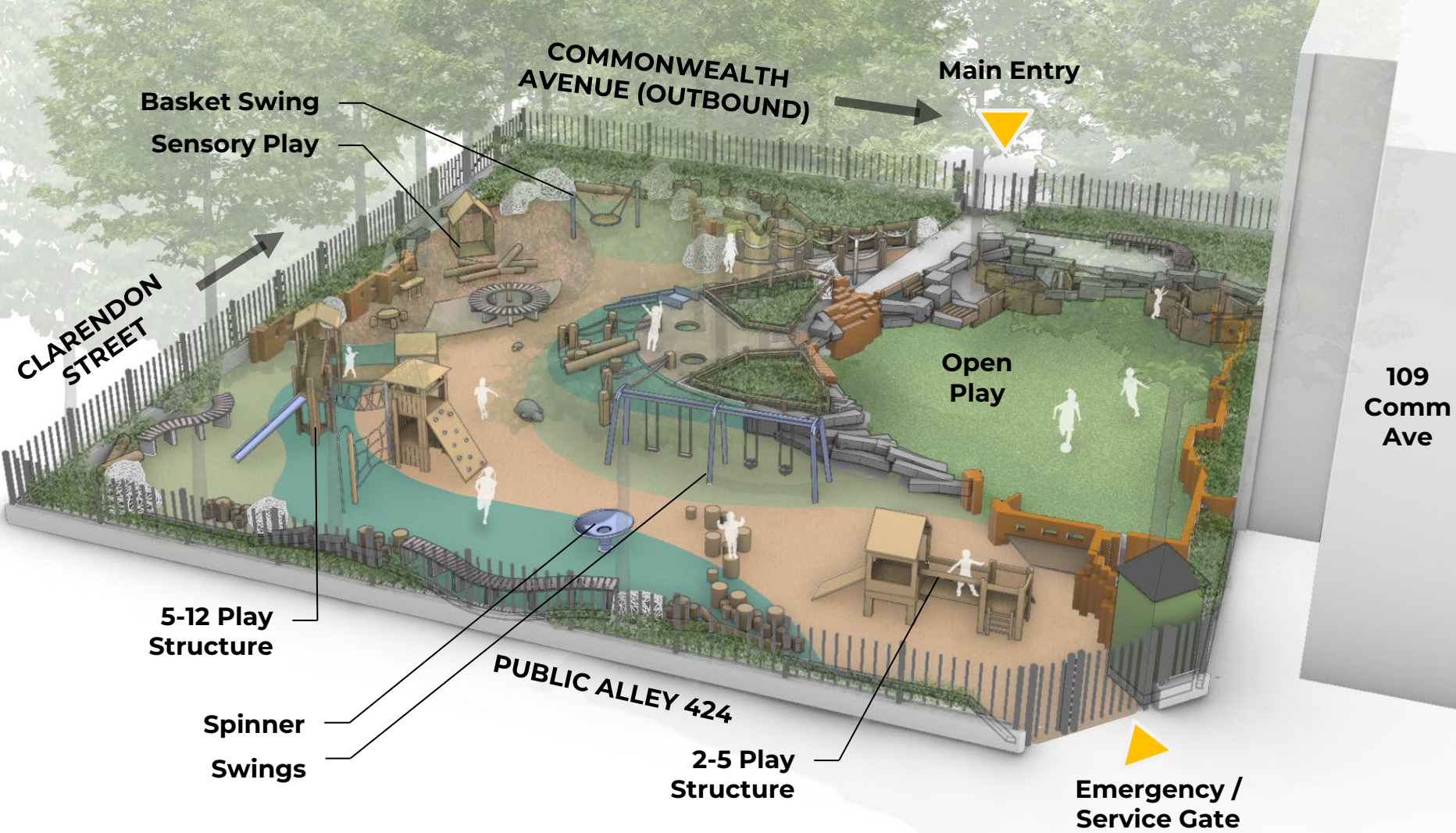
PREFERRED PLAN ENLARGEMENT



PREFERRED PLAN PERSPECTIVE VIEW



PREFERRED PLAN PERSPECTIVE VIEW



Basket Swing
Sensory Play

COMMONWEALTH
AVENUE (OUTBOUND)

Main Entry

CLARENDON
STREET

Open
Play

109
Comm
Ave

5-12 Play
Structure

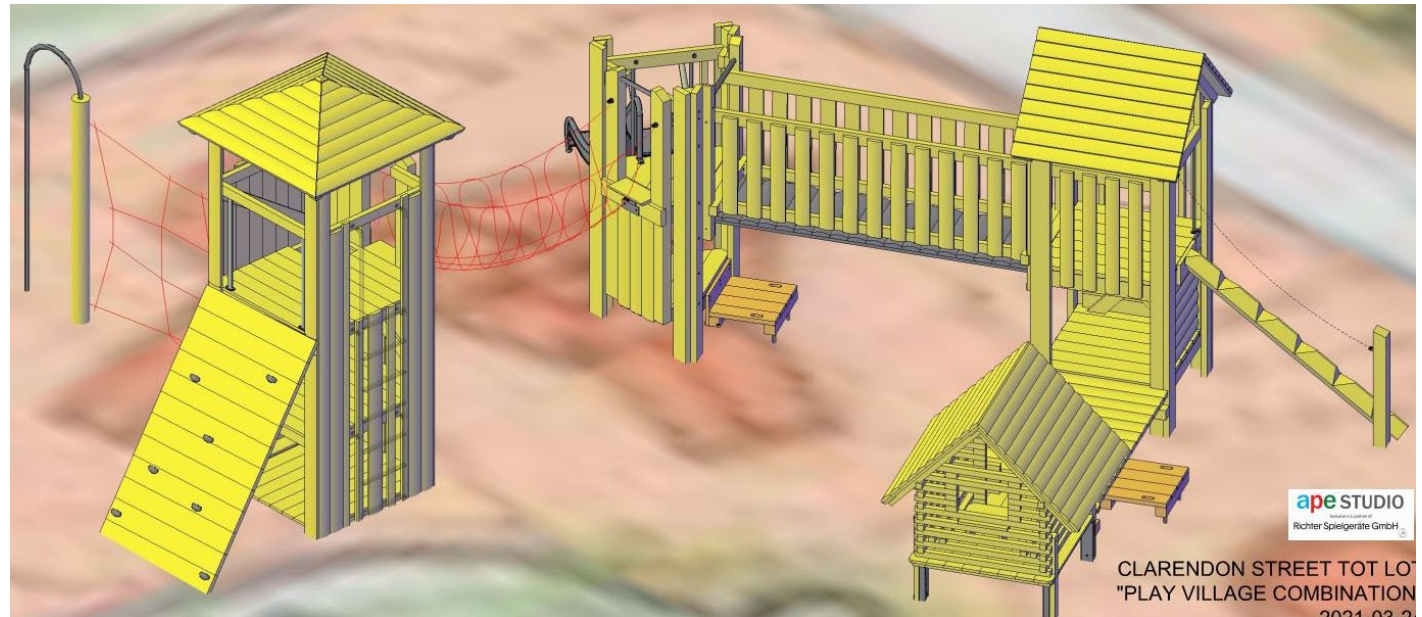
PUBLIC ALLEY 424

Spinner
Swings

2-5 Play
Structure

Emergency /
Service Gate

5-12 Option: Richter's Play Village Combo



5-12 Yr. Option: Kompan Combination



Monkey bar

Physical: the upper body muscles that are under-challenged due to sedentary lifestyles are developed immensely. So does the coordination and trunk stability. This type of training is preventive for backaches and cross coordination supports cooperation between the left and right brain halves, necessary for other skills such as reading.



Curly climber

Physical: coordination and proprioception are supported when placing arms and legs correctly for going down. Sense of balance when rotating. Arm muscles for holding tight.
Social-Emotional: empathy stimulated by turn-taking.
Cognitive: logical thinking when placing arms and legs right for rotating downwards.



Coconut rope bridge

Physical: the bridge sways gently, training the sense of balance and space when the child balances across. These motor skills in combination are great for learning how to navigate the body in space.
Social-Emotional: children swaying together on the rope experience their own and others' movements. This spurs cooperation and consideration, e.g., when passing others on the rope.



Banister bars

Physical: balance, spatial awareness and coordination are developed when going down, as well as arm, leg and core muscles when holding tight. Jumping off strengthens bone density, which is built for life in early childhood.
Social-Emotional: turn-taking and risk-taking.



Accessible stairway

Physical: climbing the accessible stairway is for all and supports cross coordination as well as arm and leg muscles. For young children, walking stairs and alternating feet is developed.
Social-Emotional: room for active breaks and adult helpers. An inclusive space.



Desk

Social-Emotional: fine meeting place and a space creator. Sharing and cooperation from both sides create a social scenario that supports communication and cooperation.



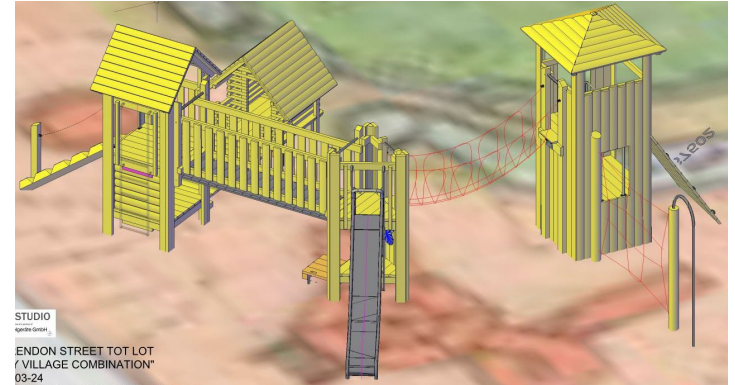
Rock climber

Physical: supports cross coordination and leg, arm and hand strength. The hand-holds on top ease entry into platform.
Social-Emotional: the inclination makes climbing feel secure, especially for younger children.



Play Value: 10 types of play
Capacity: 25

Which style 5-12 year structure do you prefer?



A. Richter's Play Village Combo (in plan)

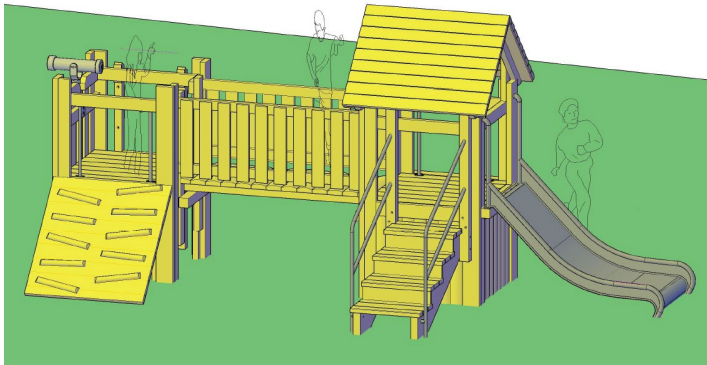


B. Kompan Combo

Which style 2-5 year structure do you prefer?



A. Richter's Platform
Hut Combo (in plan)



B. Kompan Play Village



SWINGS

Kompan Swings
(2 bays of 2 bucket and 2 belt)



IN PLAN



Berliner
Palmetto

ALTERNATIVES



Kompan You
and Me Swing



Kompan Duo
Swing



Cocowave Pendulum

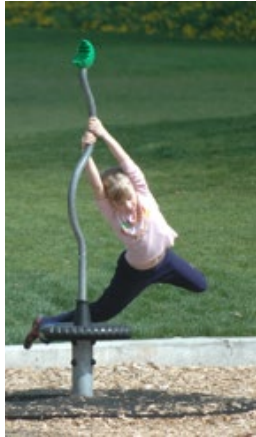
Independent Pieces

Berliner Disk



IN PLAN

ALTERNATIVES



Kompan Tipi Carousel & Spica



Richter Large and Small Stones (options)



Richter Echo Game



Kompan Snail Springer

Sensory Play Area – in plan



Stepping Stumps



Sensory Logs



Kompan Table



Climbing
Boulders

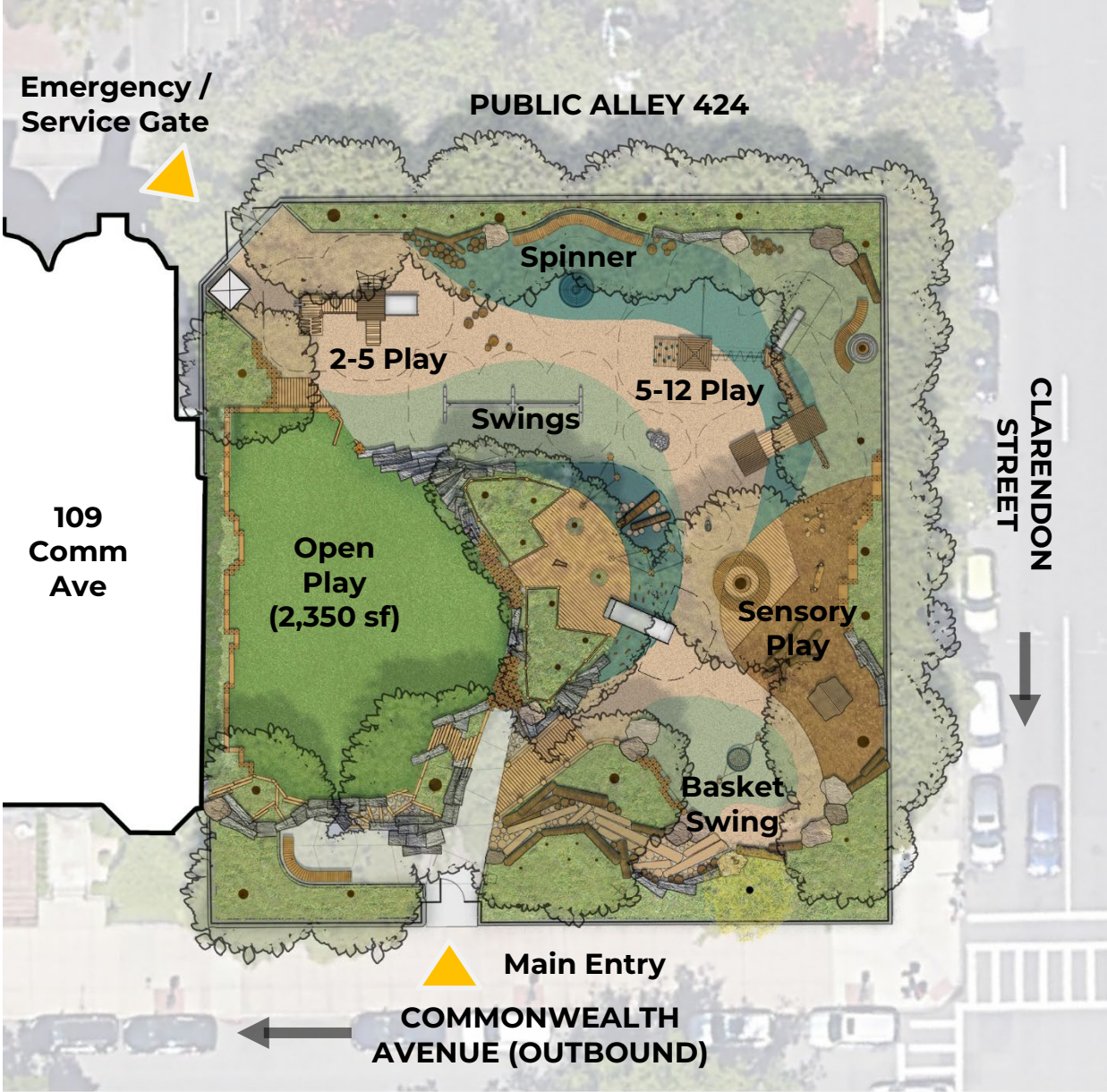


Open Play House



Kompan Desk

PREFERRED PLAN

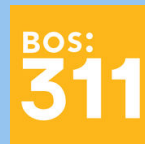




THANK YOU!

www.boston.gov/departments/parks-and-recreation/improvements-clarendon-street-play-area

For questions, maintenance requests or concerns regarding any of our parks contact 311



May 6, 2021
Boston Parks and Recreation

