

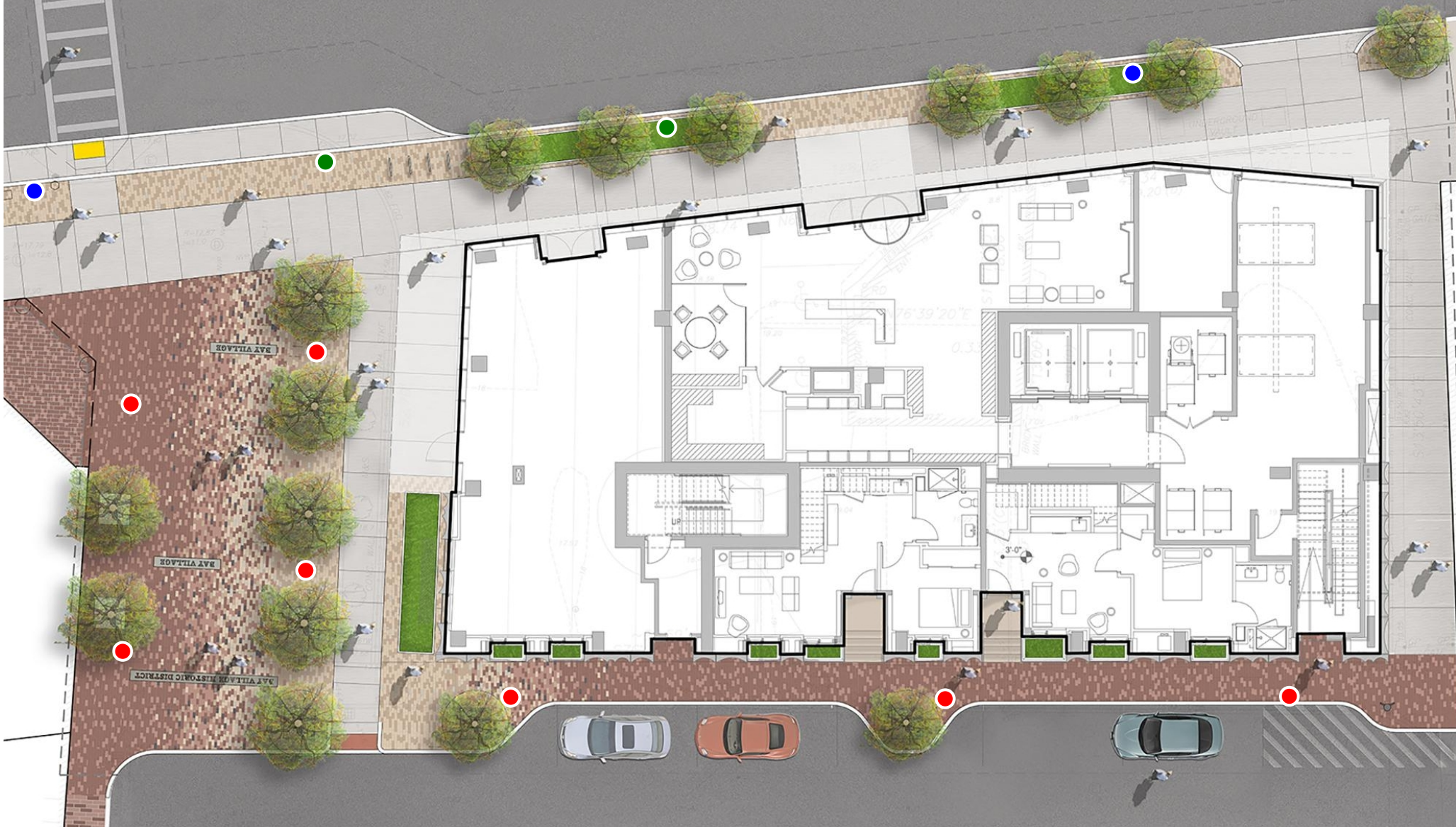


STUART ST

CORNER

230

COURT

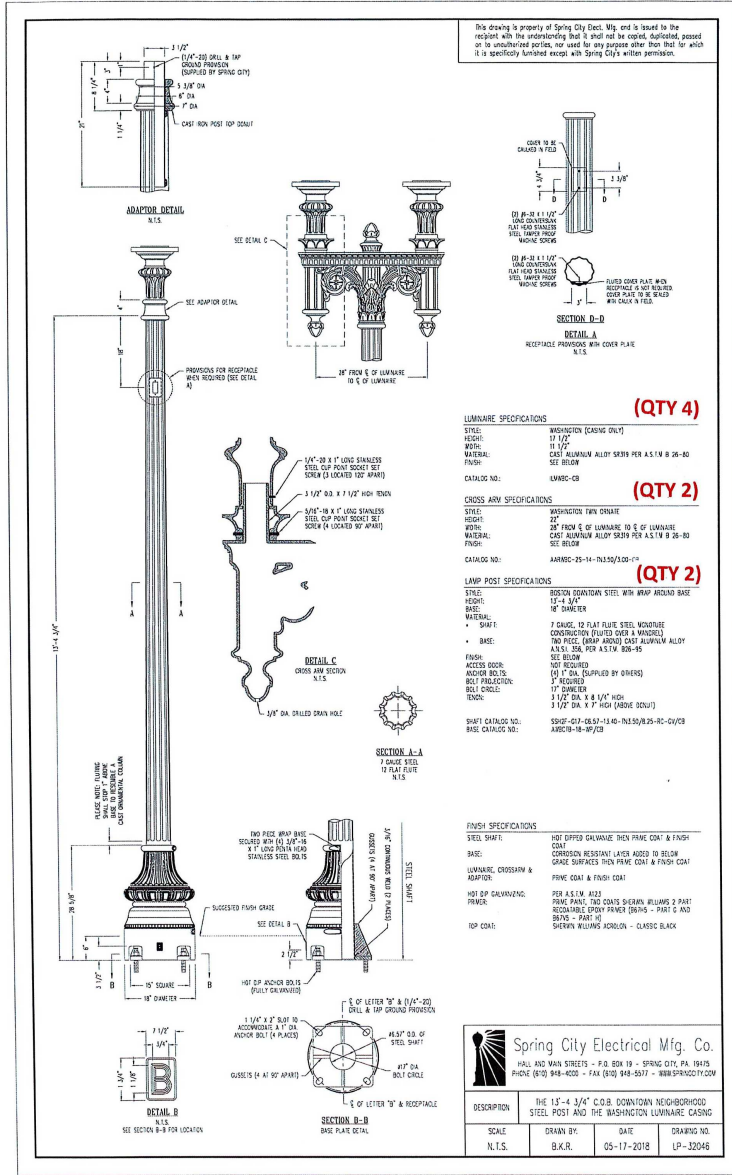


LIGHT FIXTURE KEY

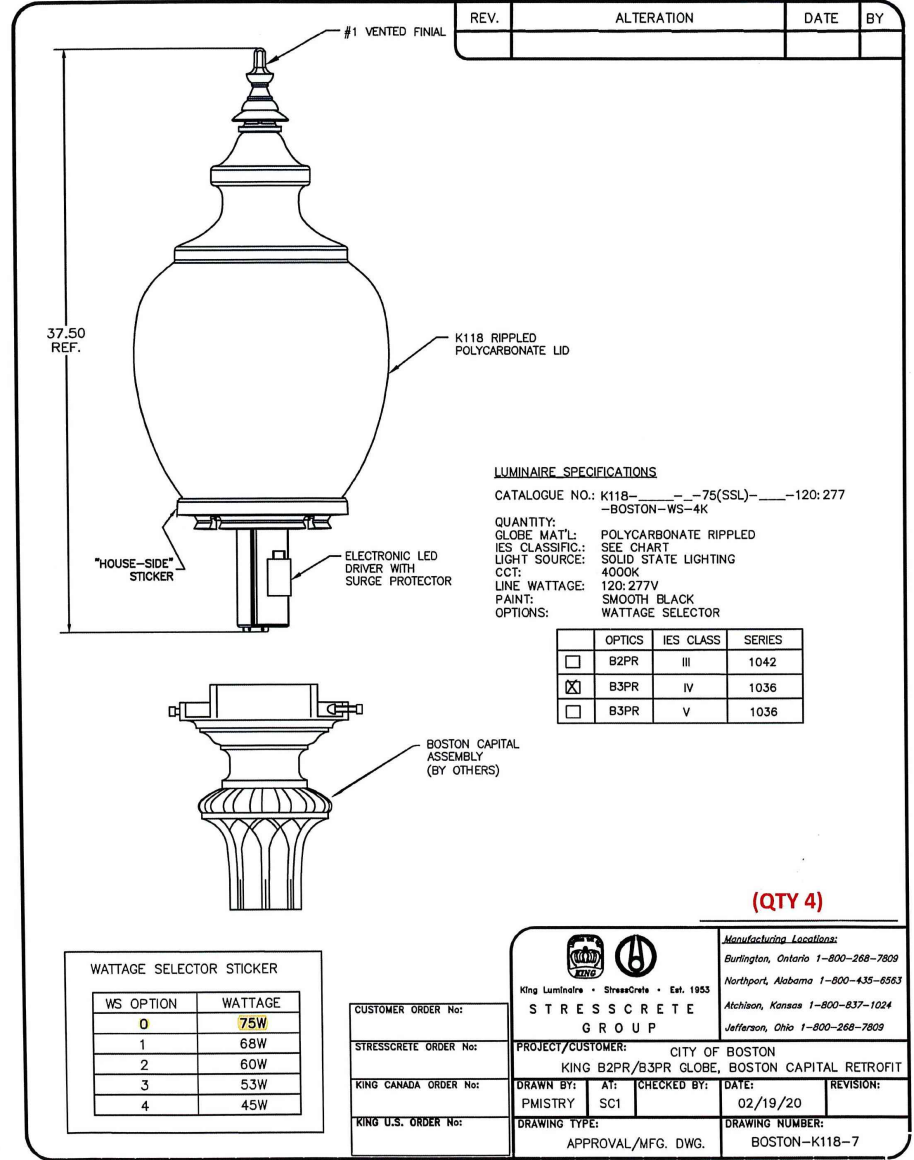
- EXISTING TWIN-CROSSBAR STREET LIGHT POLE TO REMAIN
- NEW "WASHINGTON TWIN ORNATE" STREET LIGHT AND KING BARR GLOBE POLE TO MATCH EXISTING
- NEW SINGLE "HANCOCK" LAMP POST WITH COPPER LANTERN TO MATCH EXISTING



EXISTING STREET LIGHT



WASHINGTON TWIN ORNATE POLE



(2X) KING BAAR GLOBE WITH LED LAMP

NEW TWIN CROSSARM LIGHT POLE TO MATC EXISTING, PER CITY OF BOSTON STANDARD SPEC



EXISTING GAS LAMP

This drawing is property of Spring City Electrical Mfg. Co. and is loaned to the recipient with the understanding that it shall not be copied, duplicated, printed or in any way reproduced, nor used for any purpose other than that for which it is specifically furnished except with Spring City's written permission.

(QTY 7)

LAMP POST SPECIFICATIONS

STYLE: HANCOCK/COB WITH LADDER REST
HEIGHT: 17' 3/4"
BASE: 15" SQUARE
MATERIAL: 1 PIECE CAST DUCTILE IRON PER ANSI-A8 GRADE 65-45-12
FINISH: PRIME PAINT THEN FINISH SHOWN WILLIAMS ACRYLON - CLASSIC BLACK
ACCESS DOOR: LOCATED IN BASE SECURED WITH TAMPER PROOF HEX SOCKET SECURITY MACHINE SCREWS
GROUND STUD PROVISIONS: DRILL AND TAP INSIDE WALL OF BASE OPPOSITE ACCESS DOOR TO ACCOMMODATE A 1/4" DIA GROUND STUD (STUD SUPPLIED BY OTHERS)
ANCHOR BOLTS: (4) 3/4" DIA. X 2 1/2" LONG X 3" HOOK (FULLY GALVANIZED WITH 1 GALVANIZED NUT AND 1 GALVANIZED WASHER PER BOLT)
BOLT PROJECTION: 3" REQUIRED
TENON: 7" OCT. X 3" HIGH (TO ACCEPT FALSE SOCKET)
CATALOG NO.: DF9RIBAL-15-09-35-TN300-300-EP-FS-UR-CB

SECTION A-A BASE PLATE DETAIL
 15" SQUARE
 1 1/4" X 2" SLOT TO ACCOMMODATE A 3/4" DIA ANCHOR BOLT (4 PLACES)
 9" DIA. CLEAR OPENING
 17" DIA. BOLT CIRCLE
 1 OF ACCESS DOOR

HANCOCK IRON LAMP POST

Copper Lantern

Beaufort, SC 29901

*** Braun Lighting LED Assembly and Ubiqquia Controller are shown for concept only. Light engine and controller are submitted separately and are supplied by Others**

CITY OF BOSTON ELECTRIFIED COLONIAL LANTERN (LED) (QTY 7)

PROJECT: 212 STUART ST

COPPER LANTERN HEAD WITH LED LAMP
 LED HAS APPEARANCE OF GAS BURNER ASSEMBLY

● NEW SINGLE LAMP POST GAS REPLICA TO MATCH EXISTING, PER CITY OF BOSTON STANDAR SPEC

ELECTRIFIED GAS STREET LAMP MOCK-UP



Color temperature: 3,000K

Color temperature: 2,400K

ELECTRIFIED GAS STREET LAMP MOCK-UP



Color temperature: 3,000K
Comparison to existing gas lamp fixtures