

NORWELL ST PARK

Community Meeting 2



MAY 10, 2022

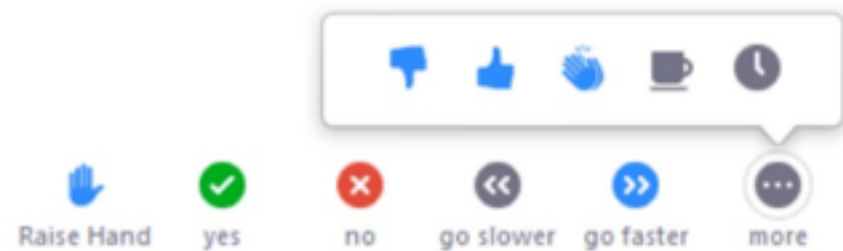
ZOOM TIPS

Here is how you can participate during the question and answer part of the presentation.

DURING THE PRESENTATION:



VIA WEB:
Turn video on / off.



To use these non-verbal options click on participants (bottom of screen); these options will pop up in side bar.

DURING THE Q&A:



JOINING VIA PHONE?

Use *9 to raise hand to ask for audio / video permission to ask questions or provide comments.



VIA WEB:

Chat to ask questions / comments or provide responses to poll questions



Raise hand to ask for audio / video permission to ask questions or provide comments.

AGENDA

- 1** PROJECT OVERVIEW

- 2** WHAT WE HEARD - COMMUNITY MEETING 1

- 3** PROJECT BACKGROUND & GOALS

- 4** DESIGN CONCEPTS

- 5** LISTENING & DISCUSSION

- 6** CLOSING REMARKS & NEXT STEPS

PROJECT TEAM

B CHATFIELD

Project Manager

abigail.chatfield@boston.gov, 617-504-7709

CHRISTINE BRANDAO

Outreach Coordinator

christine.brandao@boston.gov, 617-961-3006

KAKI MARTIN & JENNIFER NG

Landscape Architects

Klopper Martin Design Group

kaki@kloppermartin.com jng@kloppermartin.com

DENISE DOSSANTOS

Mayor's Office of Neighborhood Services

denise.dossantos@boston.gov

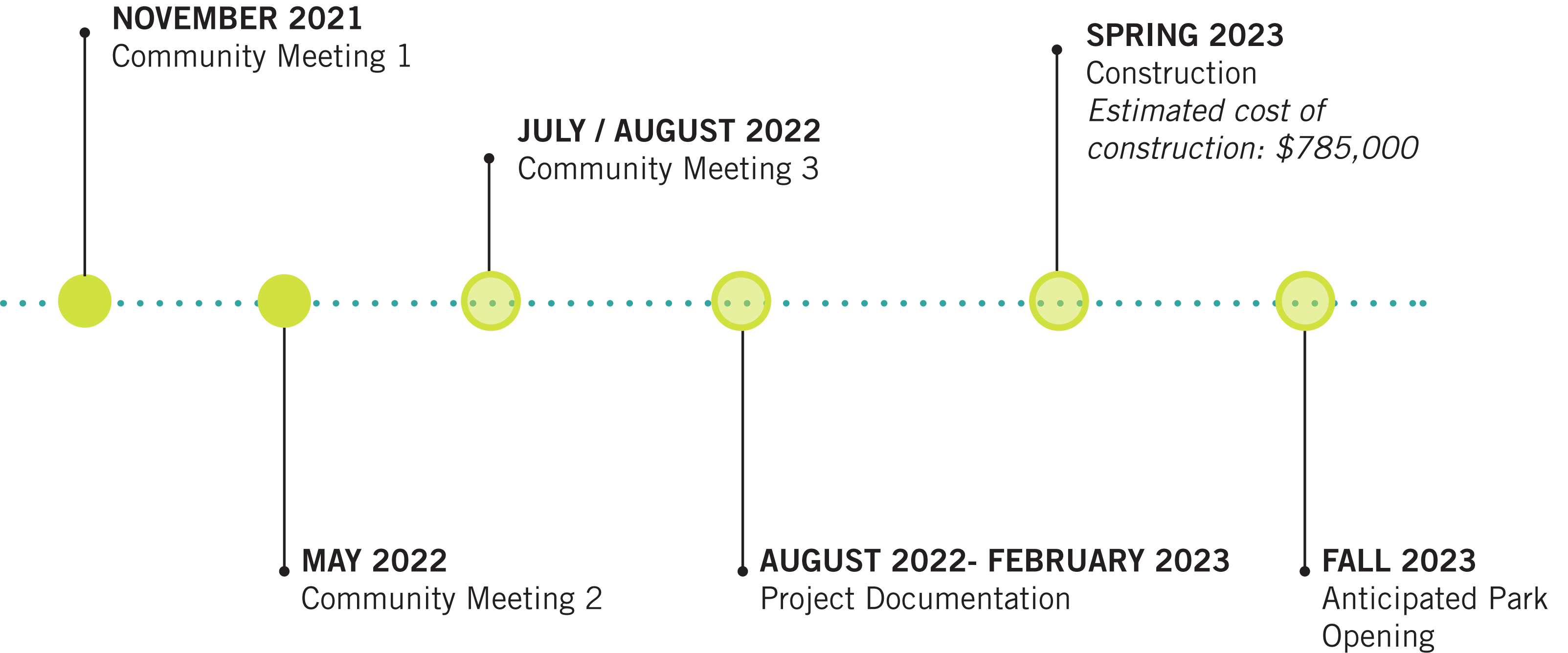
KELLY BOLING & GUADALUPE GARCIA

Trust for Public Land

guadalupe.garcia@tpl.org, 617-371-0544



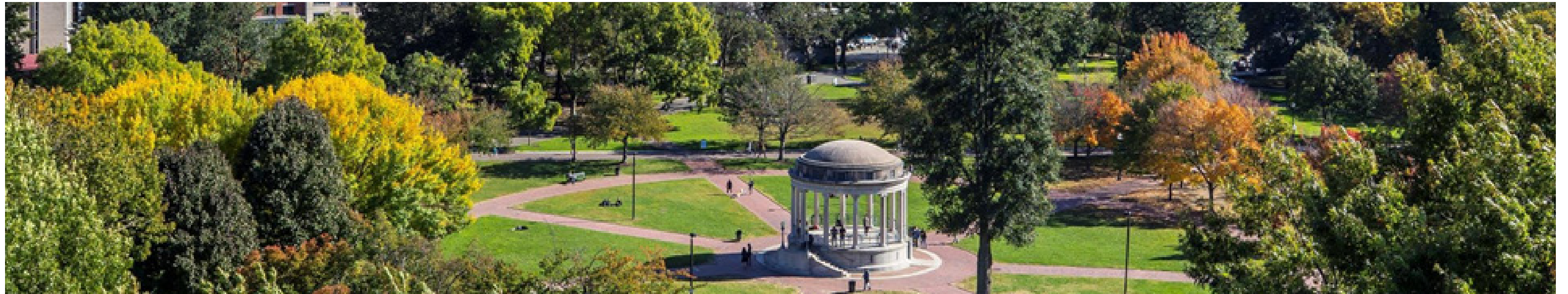
PROJECT SCHEDULE & FUNDING





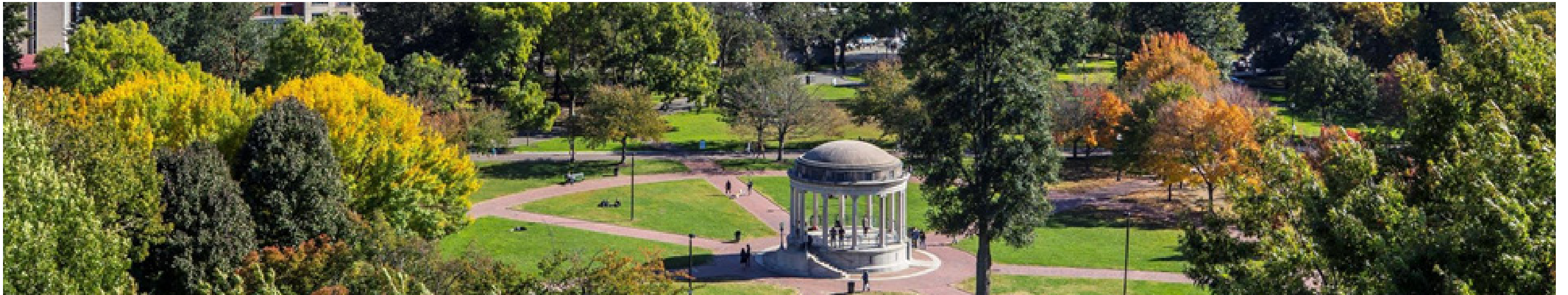
CITY OF BOSTON PRIORITIES

- Expanding walkable access to parks
- Addressing equity
- Climate resilience
- Healthy Communities
- Community building



PARKS & RECREATION GOALS

- Accessible and available to all
- Diverse, balanced, and efficient mix of uses
- Meaningful and inclusive community engagement
- Adaptive and resilient landscapes
- Promote connections



SUMMER 2020 WOW RESEARCH



Credit: WOW YPAR2020 youtube

2020 Youth Participatory Action Research

Priorities: Physical and Social safety

> Make the park a safe and public health-oriented space

Lighting, clean, community-led watching, water and cooling stations trees and shade, exercise equipment

> Make the park a welcoming space

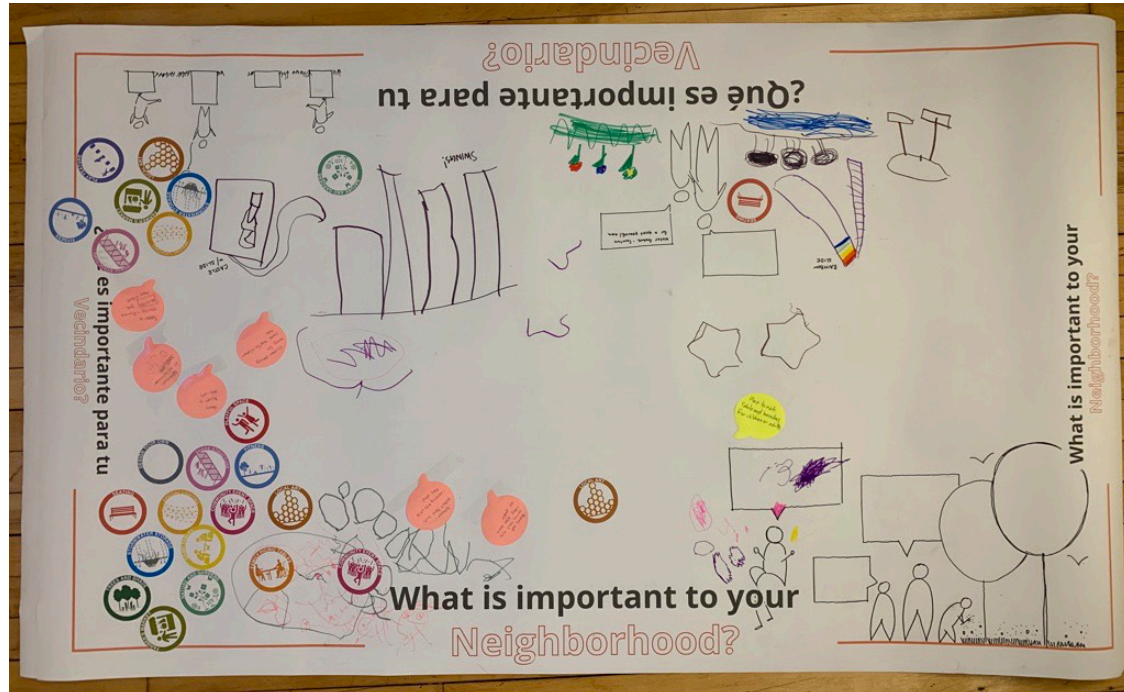
Accessible seating, areas for gathering, local artwork

> Inclusion and empowerment

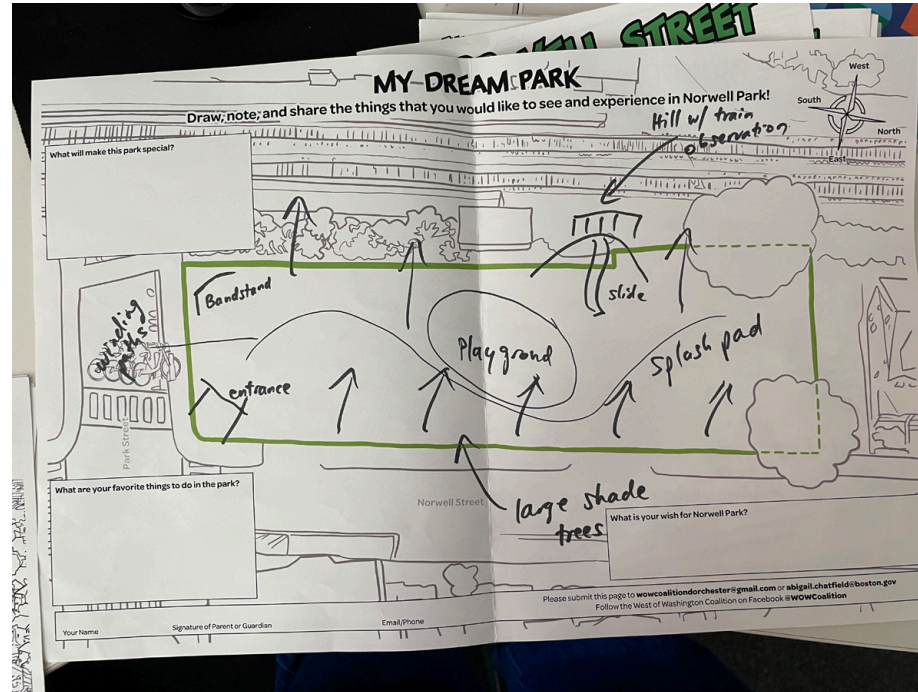
Intentional outreach, positive representation, events to draw people together, intergenerational inclusion

FORMS OF OUTREACH

Interactive Artwork



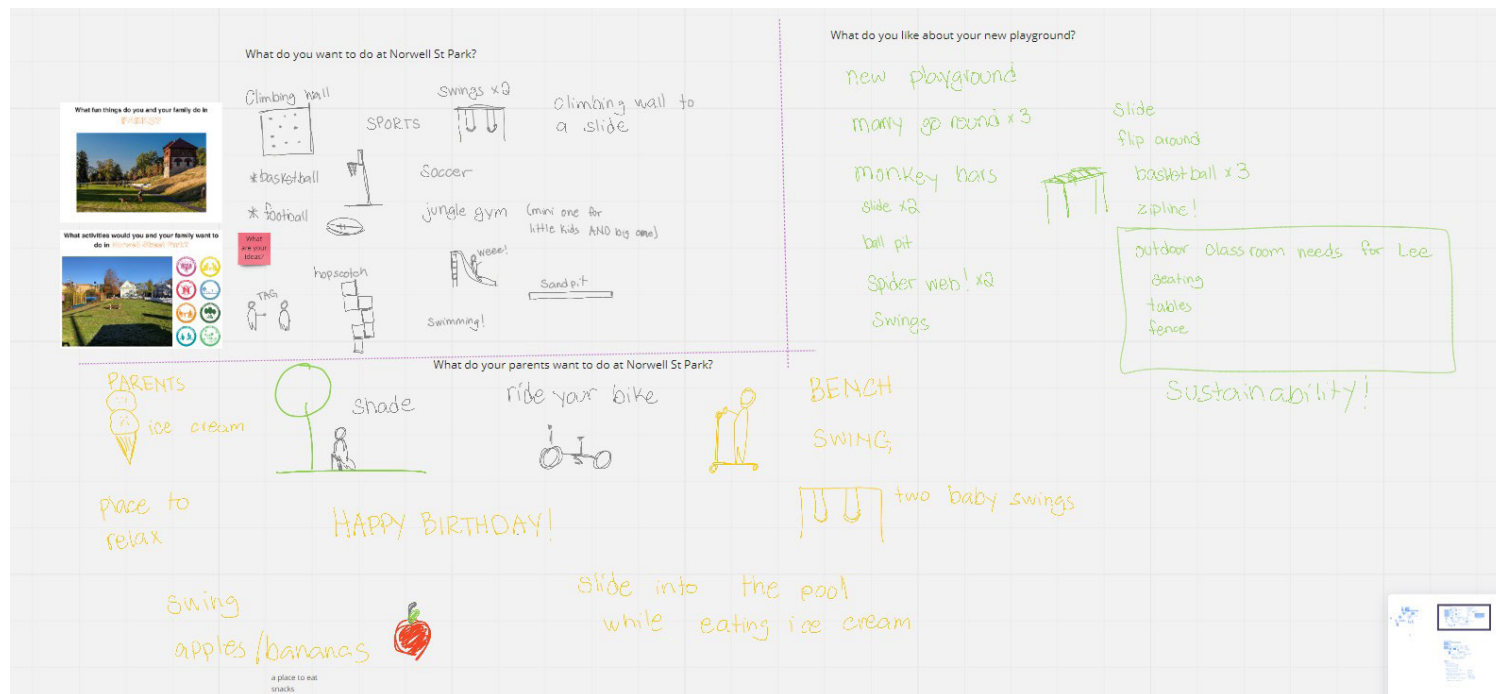
Activity Books



Wish Fence



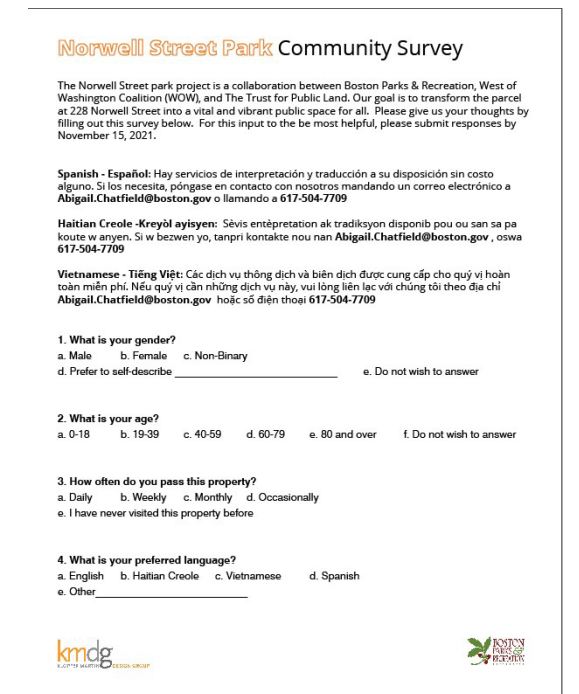
Local School Outreach | Joseph Lee 3rd and 5th Grade Classes



Open Conversation



Survey



WHAT WE HEARD

“My wish for Norwell Park is that it becomes a place to build a stronger neighborhood.”

“I wish for a beautiful place with **trees and flowers** where **neighbors** can meet and **rest together.**”

What will make this park special?
“A place for my mom to sit on a bench.”



What is your wish for Norwell Park?

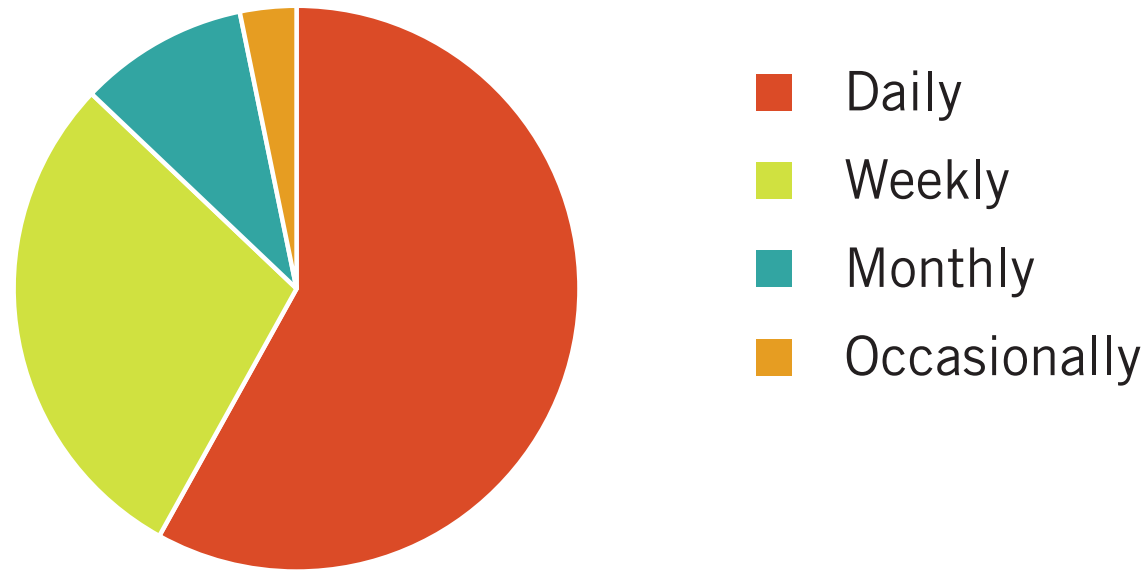
“To have the best day”



COMMUNITY MEETING 1

We received 31 responses from the Fall 2021 survey.

How often do you pass this property?

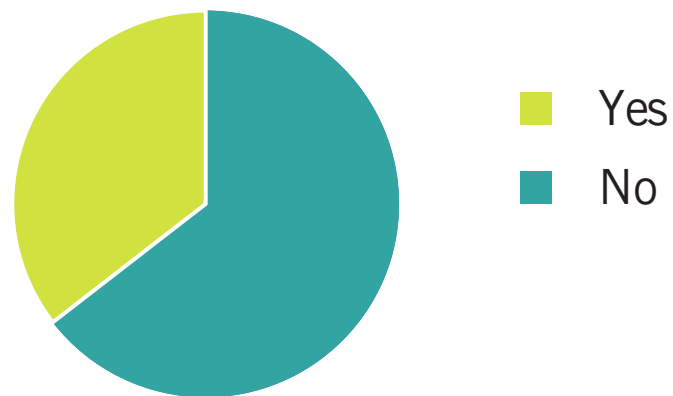


How did you hear about this event/survey?



Over 50% of respondents have at least one child under the age of 18 in their household.

Do you have elderly relatives or neighbors that use this park?

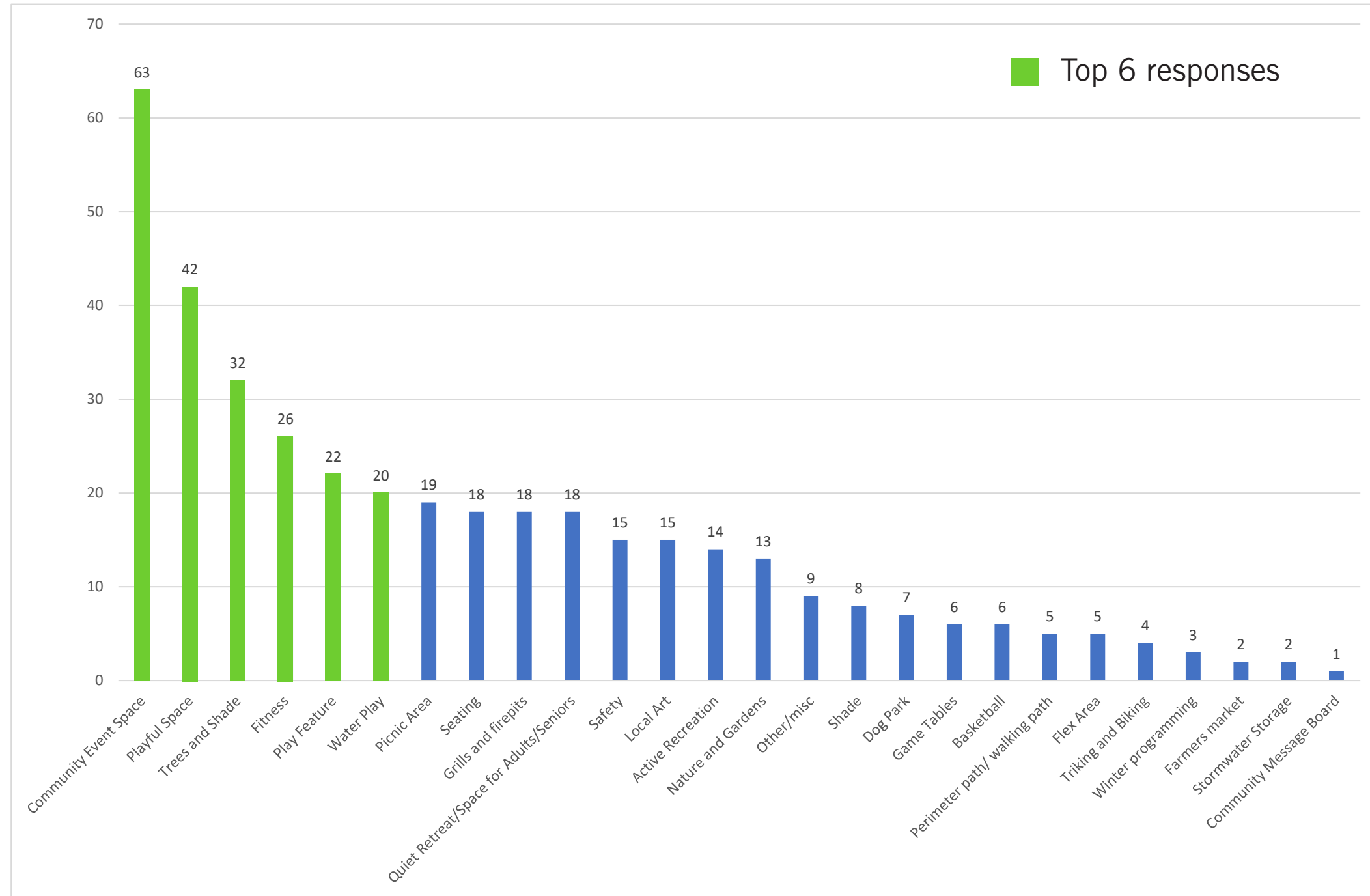


58% of respondents pass this property on their way to the Talbot Station.



COMMUNITY MEETING 1

This graph shows the top 6 responses from community activities and surveys.



1



2



3



4



5

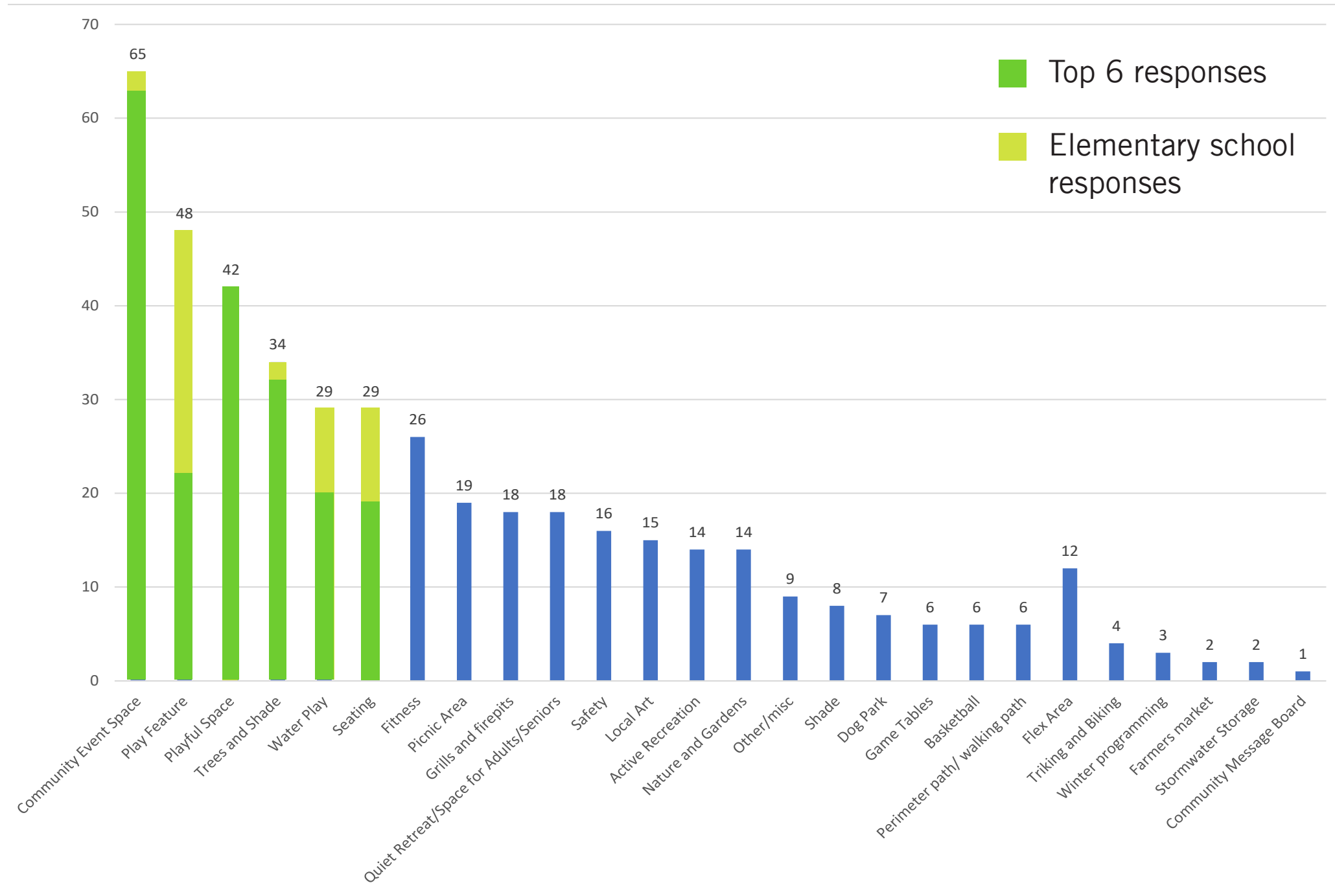


6

*Data Sources: Survey questions (online and paper): "Please choose your top 5 activities or features in parks that are most important to you.", "What is missing in your neighborhood parks that you would like to see in this future park?", "What is your wish for Norwell Park?"; Mural Activity from 11/6 Outreach event; Wish Fence activity from 11/6 Outreach Event, Open Conversation from 11/6 Outreach Event, Activity Books

COMMUNITY MEETING 1

With the addition of student feedback, the top 6 programs change to include seating.



1



2



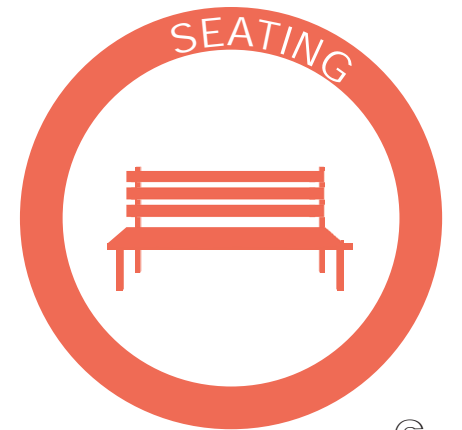
3



4



5

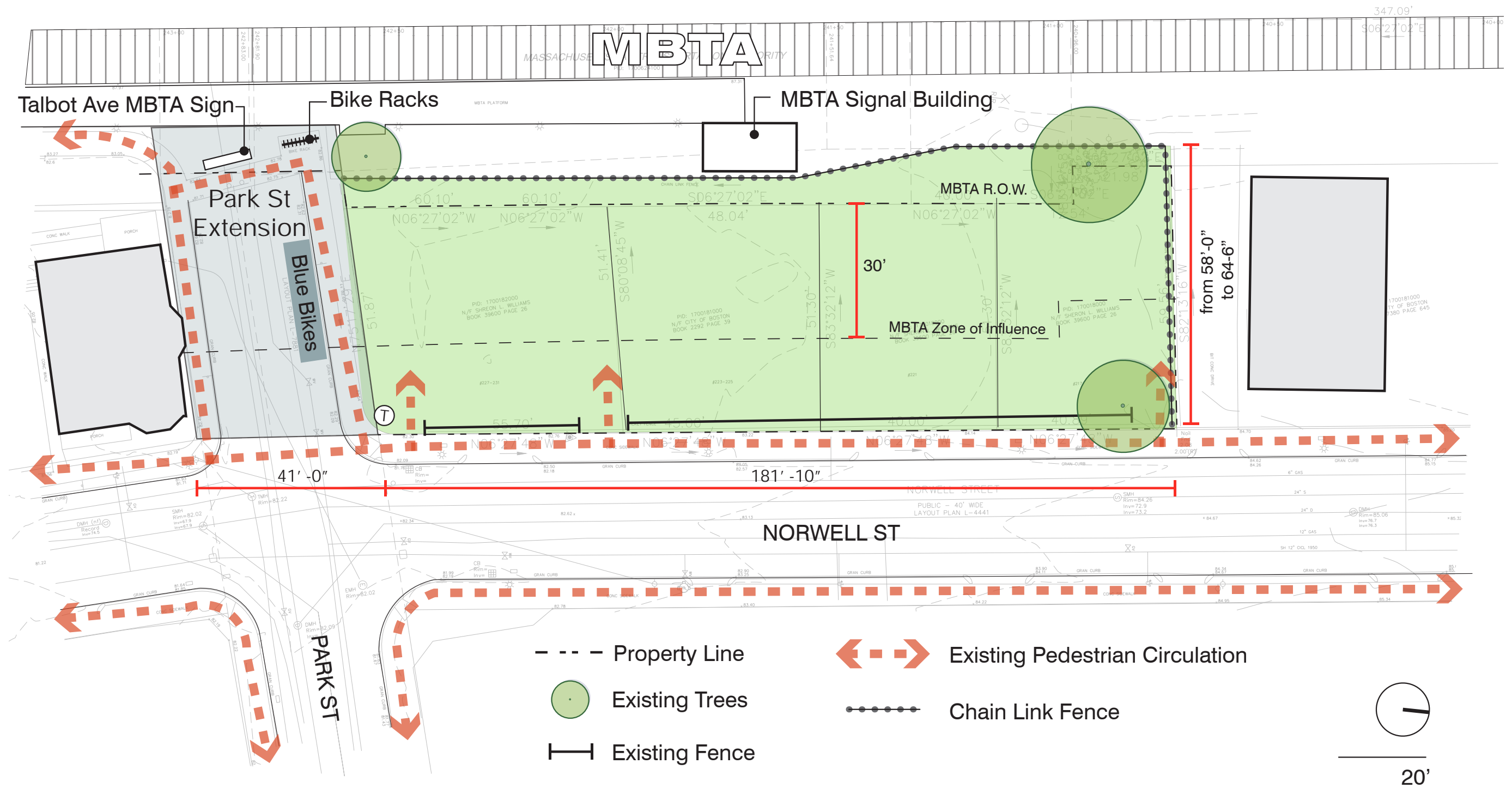


6

SITE ANALYSIS

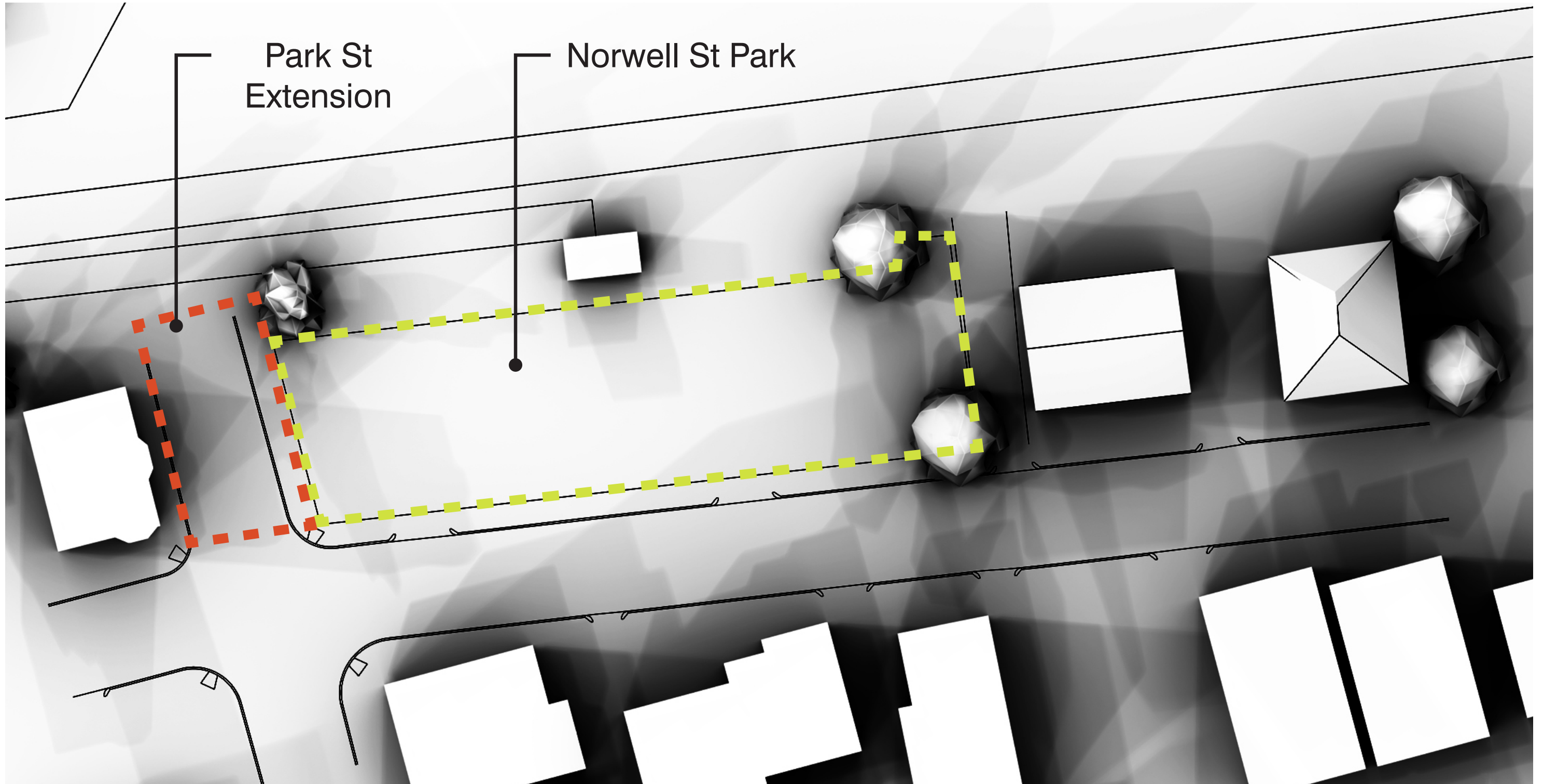


EXISTING CONDITIONS / CONSTRAINTS

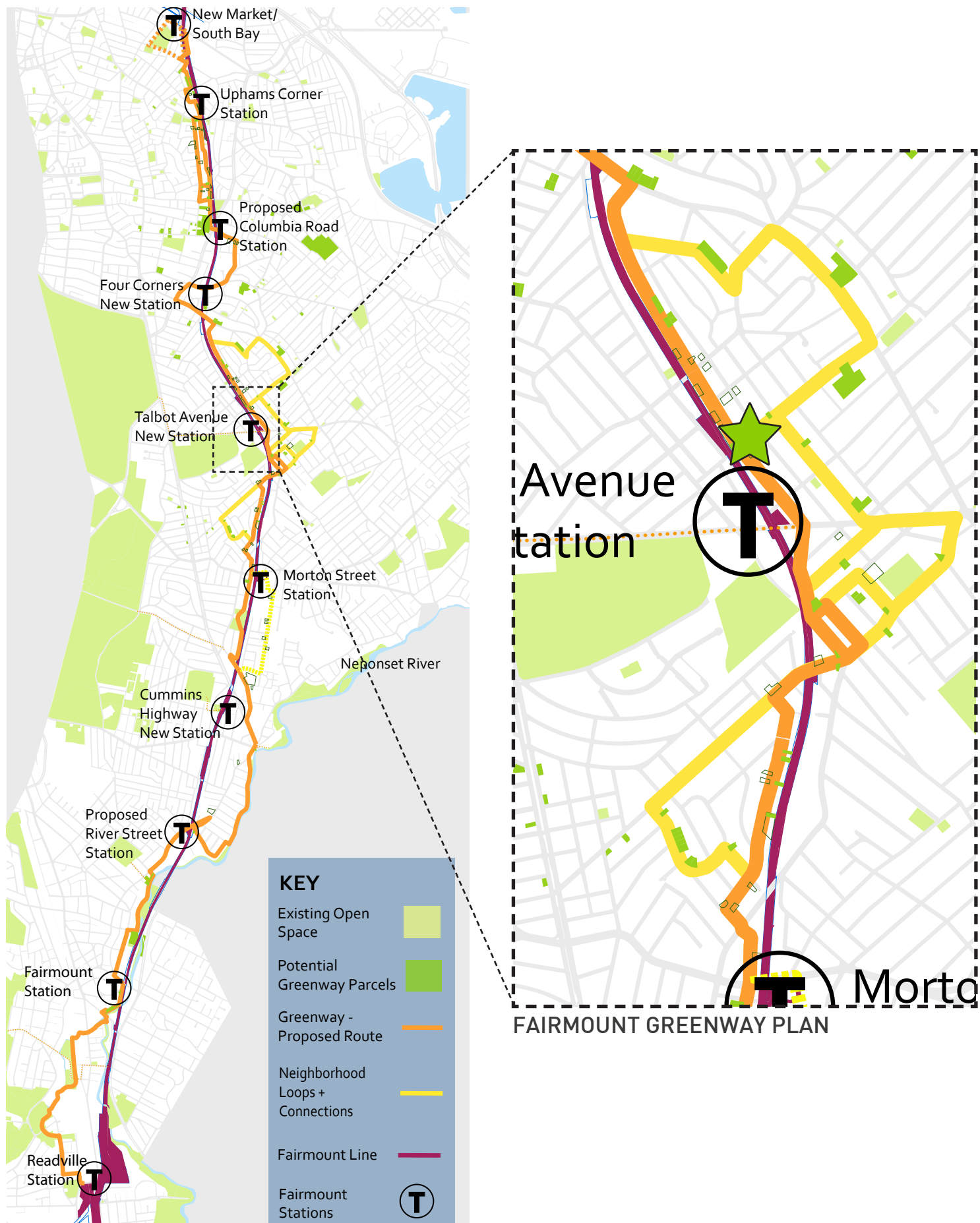


SUN SHADE STUDY

Combined sun shade study showing all seasons



FAIRMOUNT GREENWAY CONNECTION



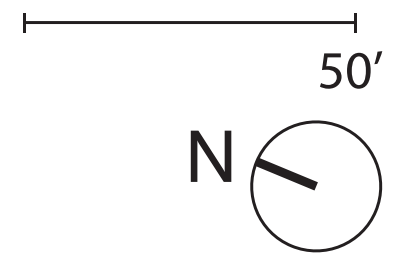
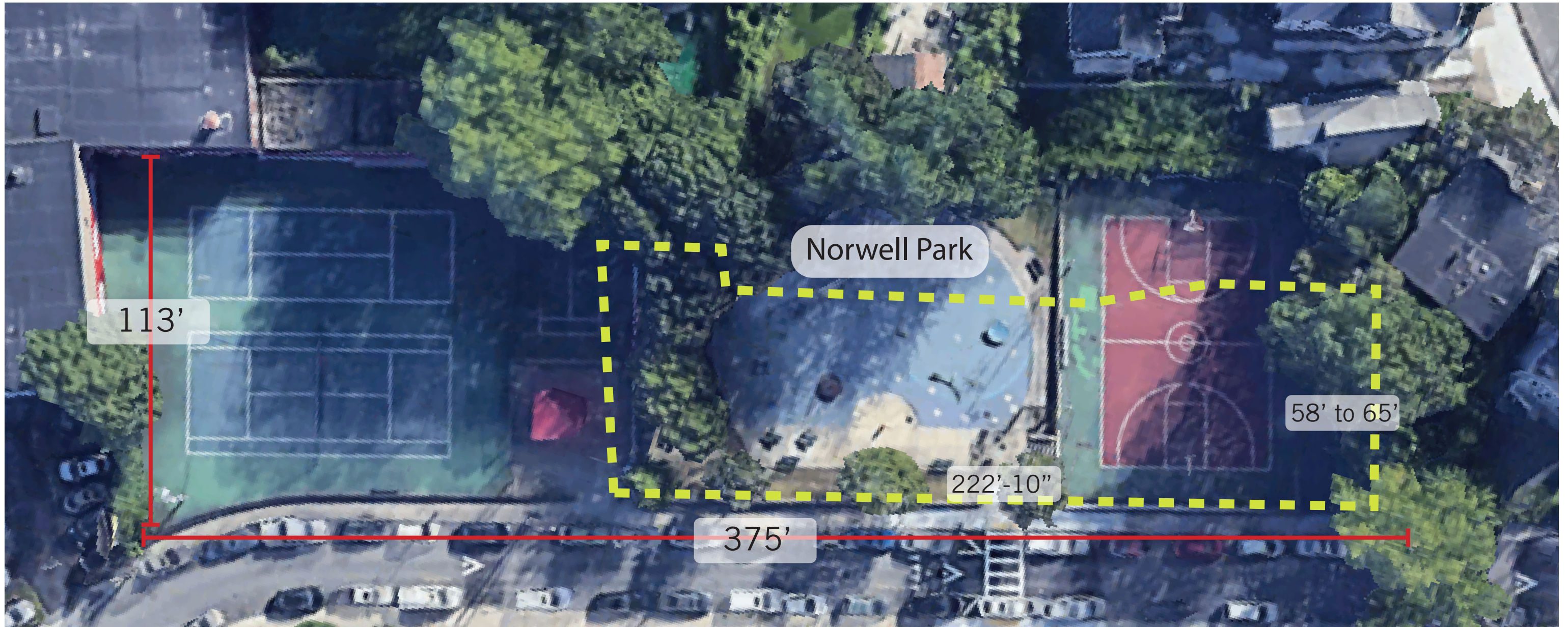
- A 9-mile walking and biking route that parallels the Fairmount Indigo Line
- Norwell St Park - a new link in the chain of green spaces that will form the Fairmount Greenway Connection
- Goals along the Greenway include traffic calming, wider sidewalks, wayfinding signs, improved intersection crossings, and green infrastructure.

EXISTING NEIGHBORHOOD PARKS



PROJECT BACKGROUND AND GOALS

RIPLEY PLAYGROUND COMPARISON



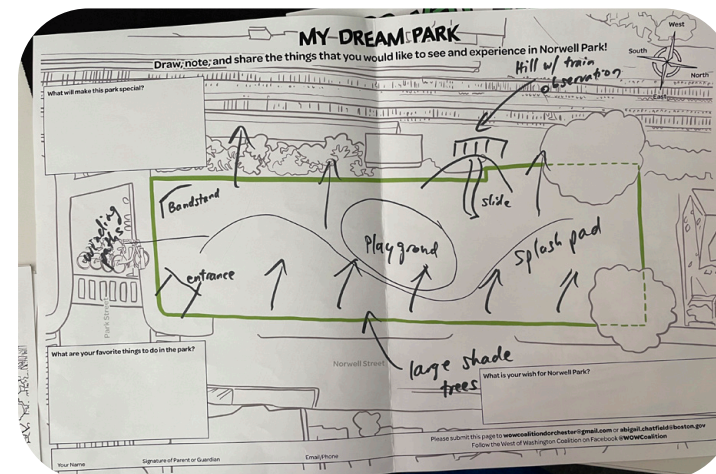
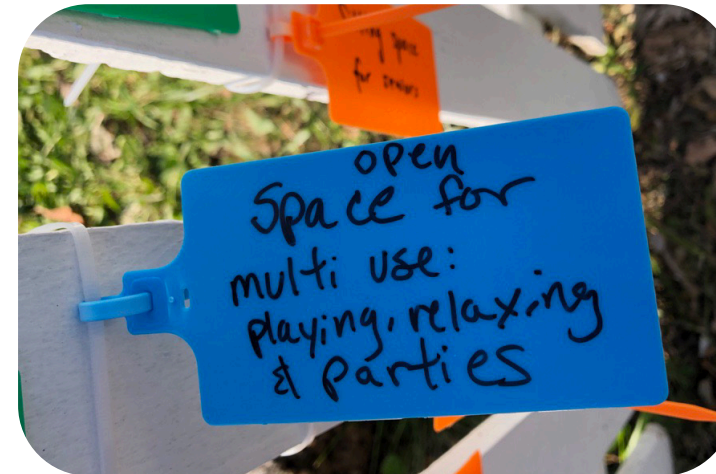
PROJECT GOALS

> Provide space for the **community** to gather and celebrate across generations

> Provide opportunities for flexible and structured **play**

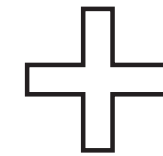
> Provide **relief from heat** through trees and shade or cooling stations

> Provide a space that feels **safe** and inclusive to all members of the community



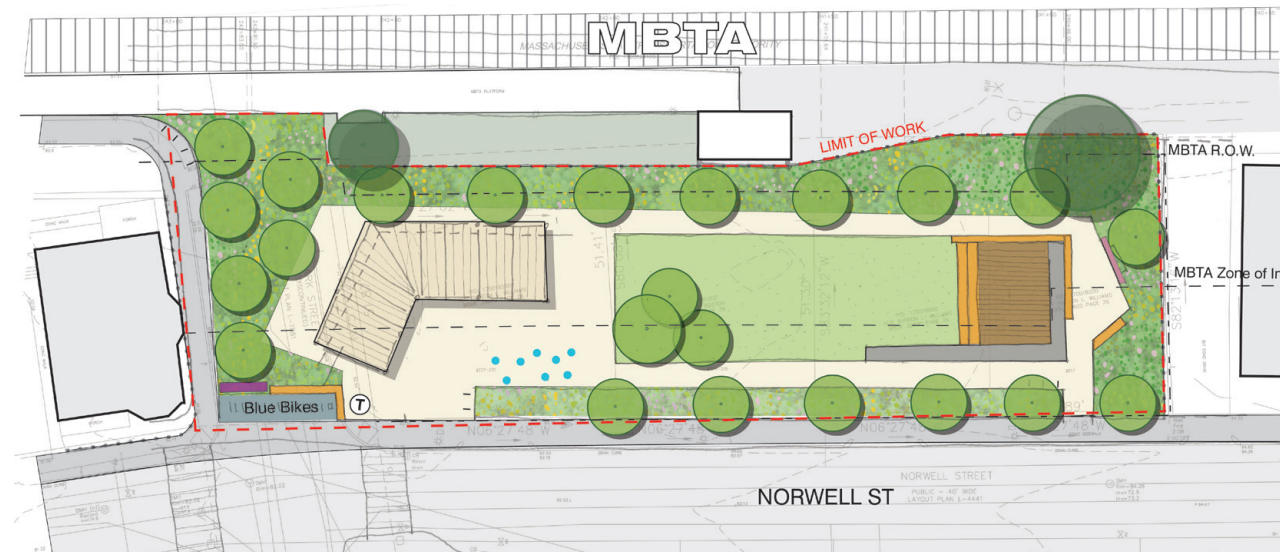
KIT OF PARTS

Each option includes these types of spaces

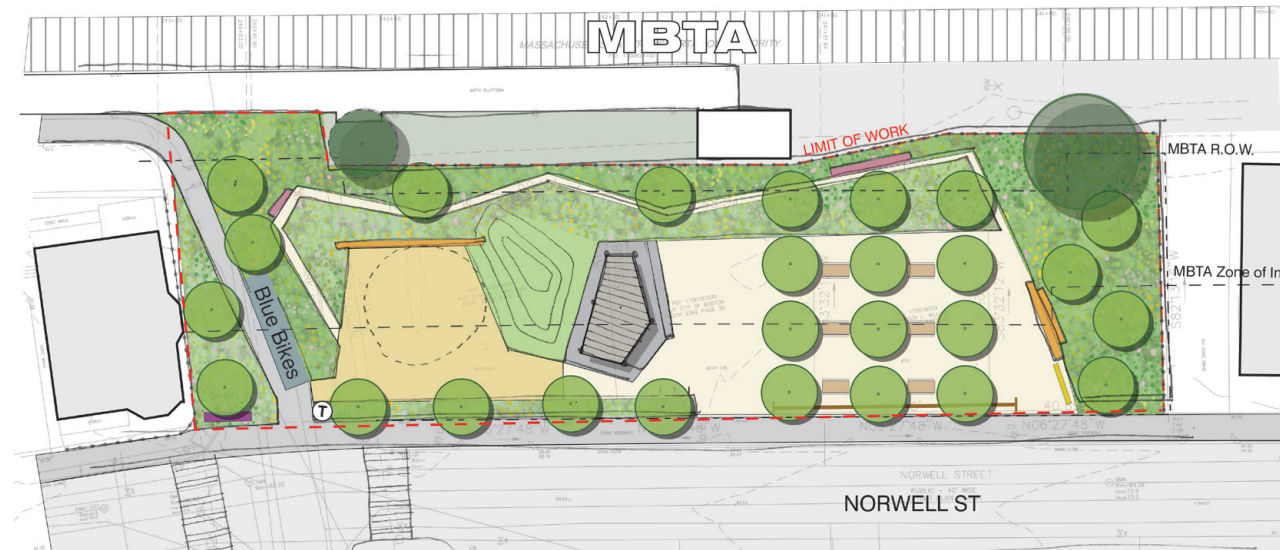


CONCEPT OVERVIEW

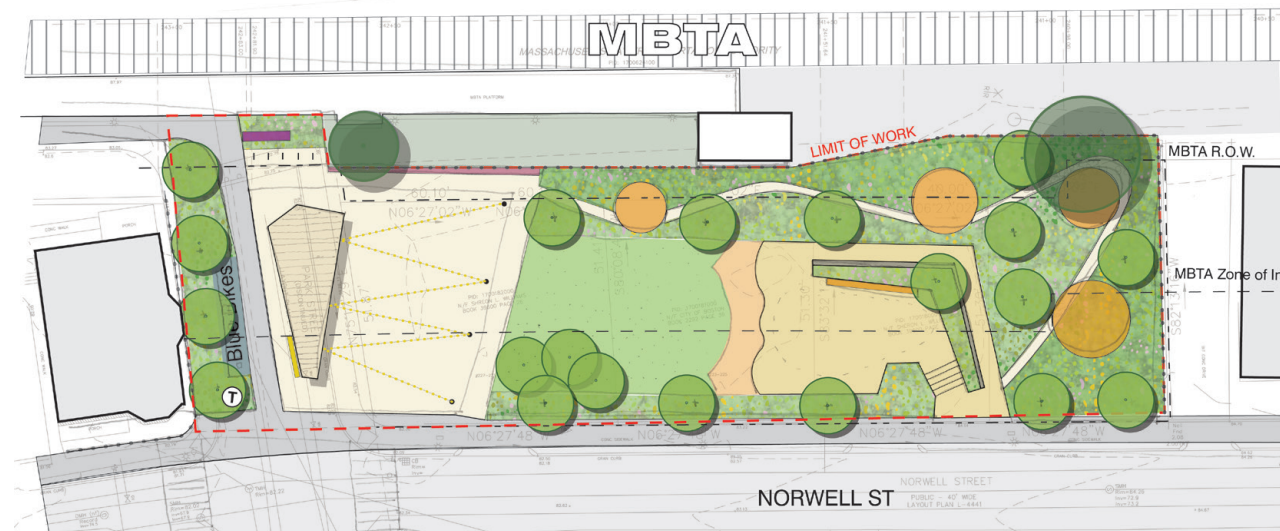
CONCEPT 1
ONE ROOM



CONCEPT 2
TWO ROOMS



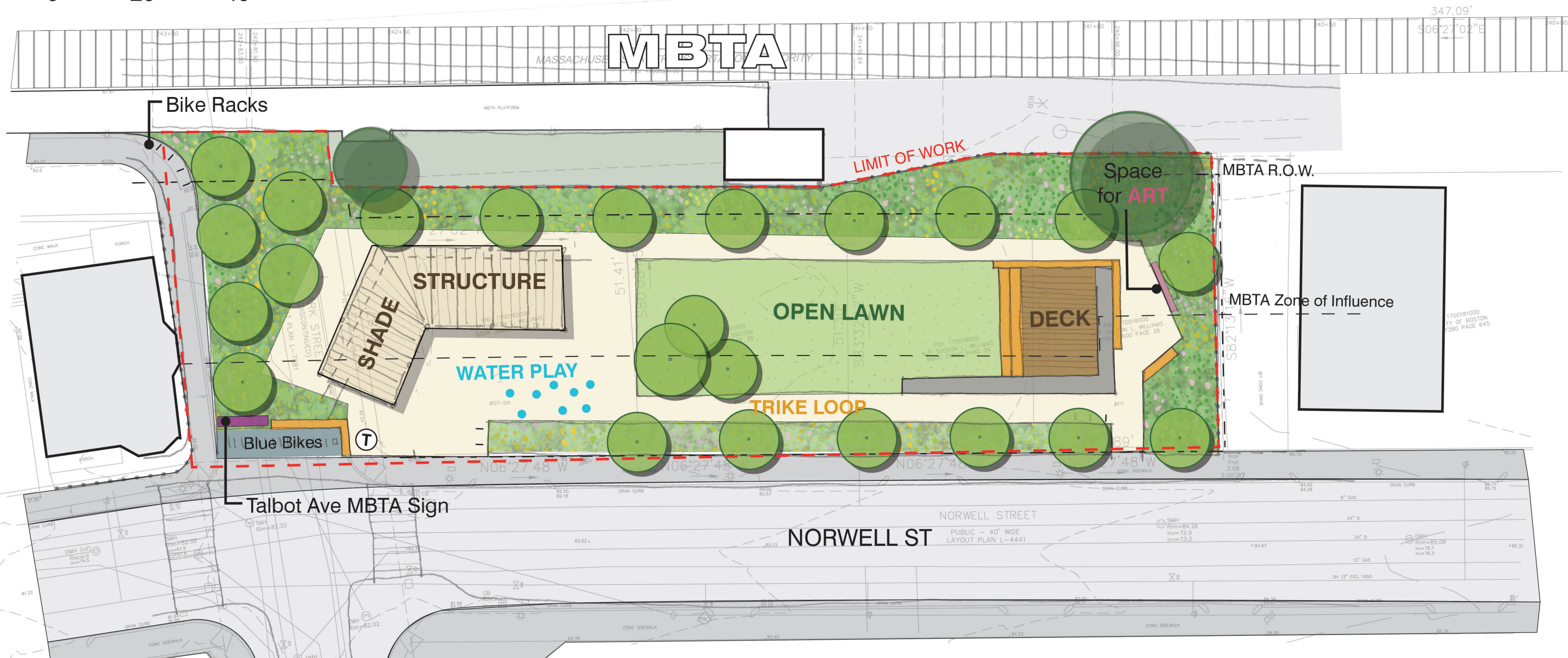
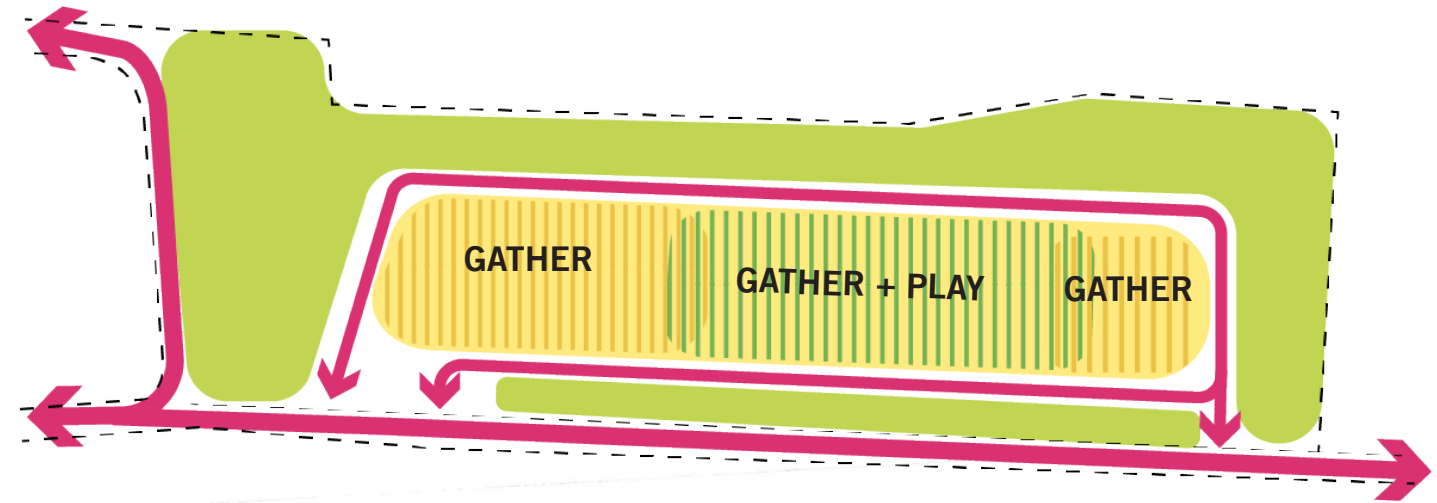
CONCEPT 3
THREE ROOMS



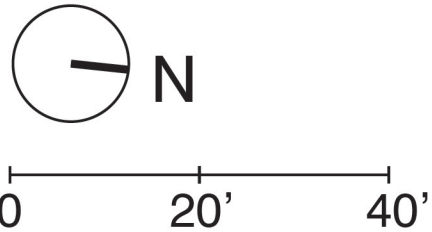
CONCEPT 1 : PLAN



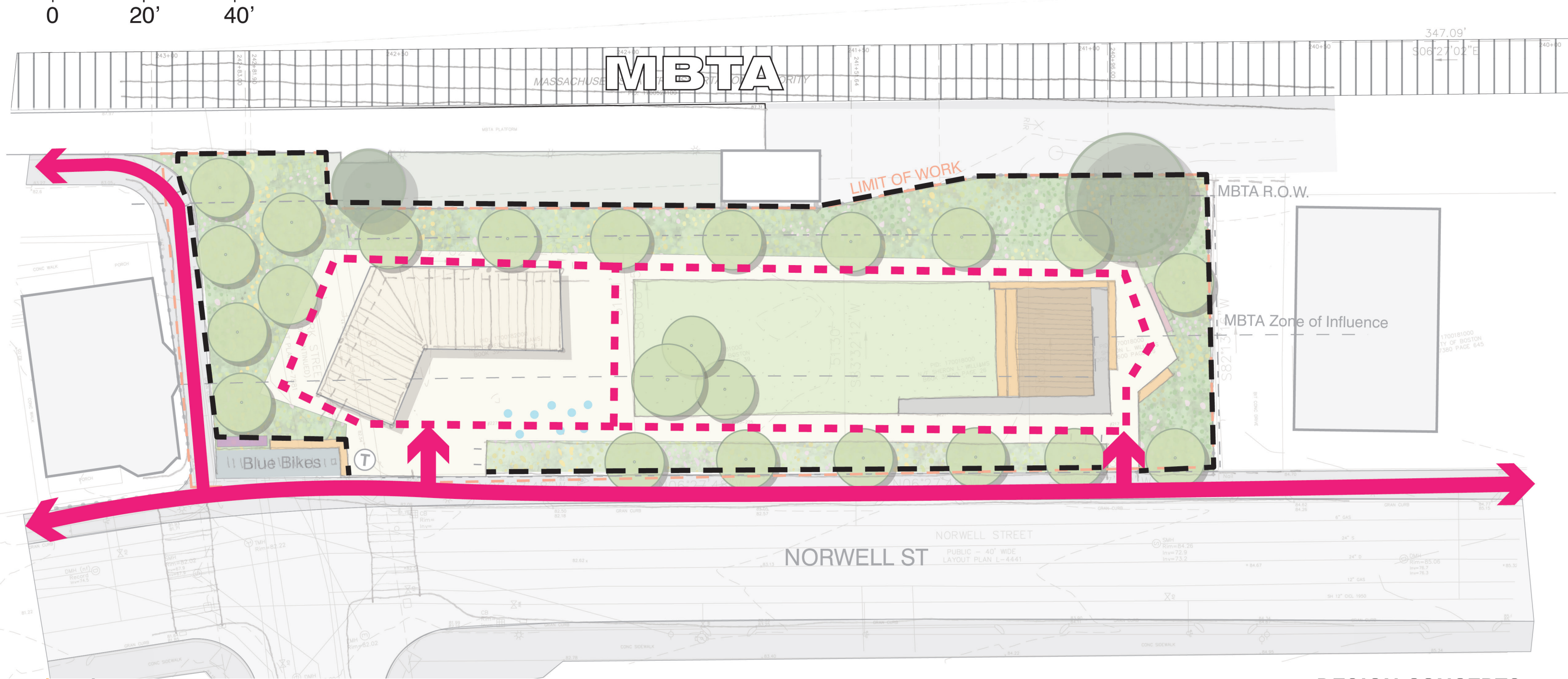
0 20' 40'



CONCEPT 1 : PAVED ACCESSIBLE CIRCULATION



- Fence
- █ Primary Circulation
- - - Activity Loop



CONCEPT 1 : PROGRAM STUDY

1 ROOM

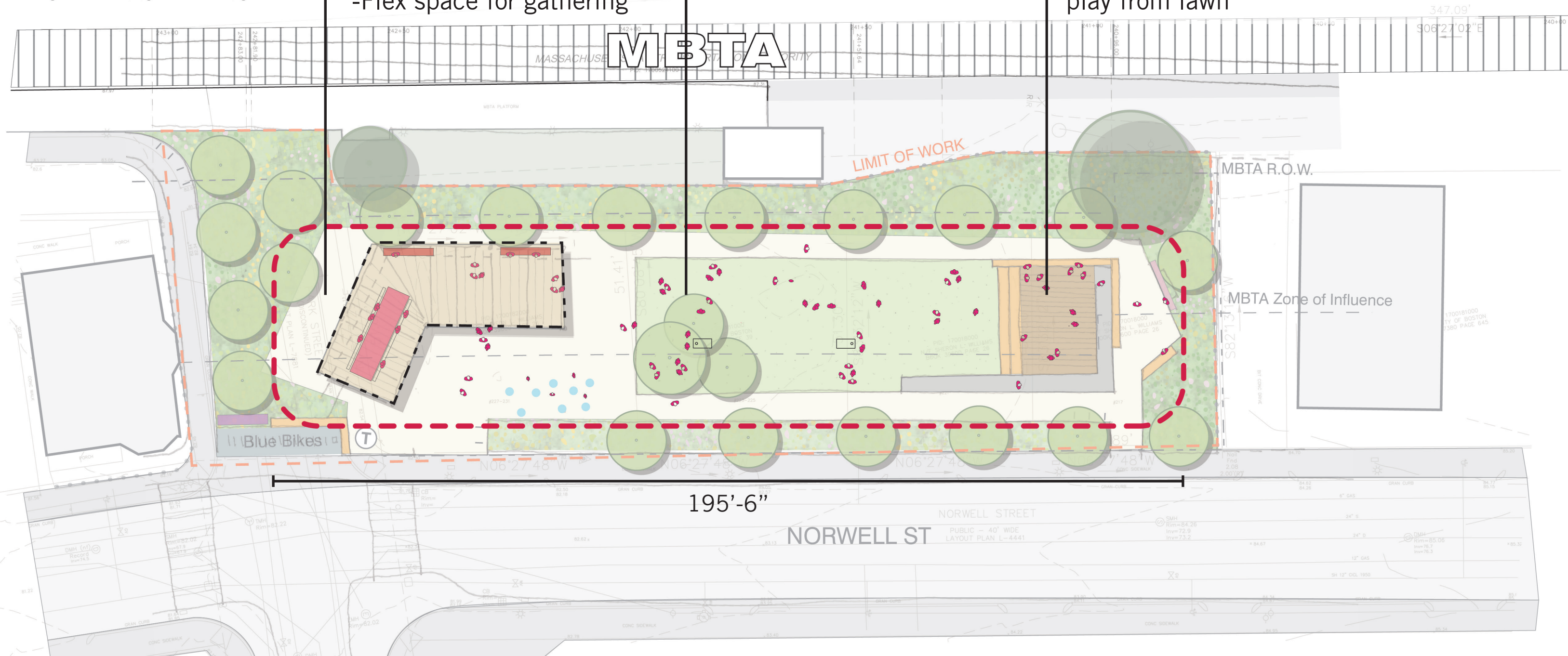


0 20' 40'

Open Plaza (2,870 sq ft)
 - Community Picnic table and benches under shade structure
 -Water play
 -Flex space for gathering

Open Lawn (2,300 sq ft)
 - Flex lawn games (cornhole, pick-up soccer, frisbee, etc.)

Flex Deck (400 sq ft)
 - Seating
 - Small social gathering
 - Possible stage
 - Continuation of open play from lawn



CONCEPT 1 : PRECEDENTS

NOTE: Final finishes to be confirmed based on funding and budget

Community Picnic Table



Shade Structure



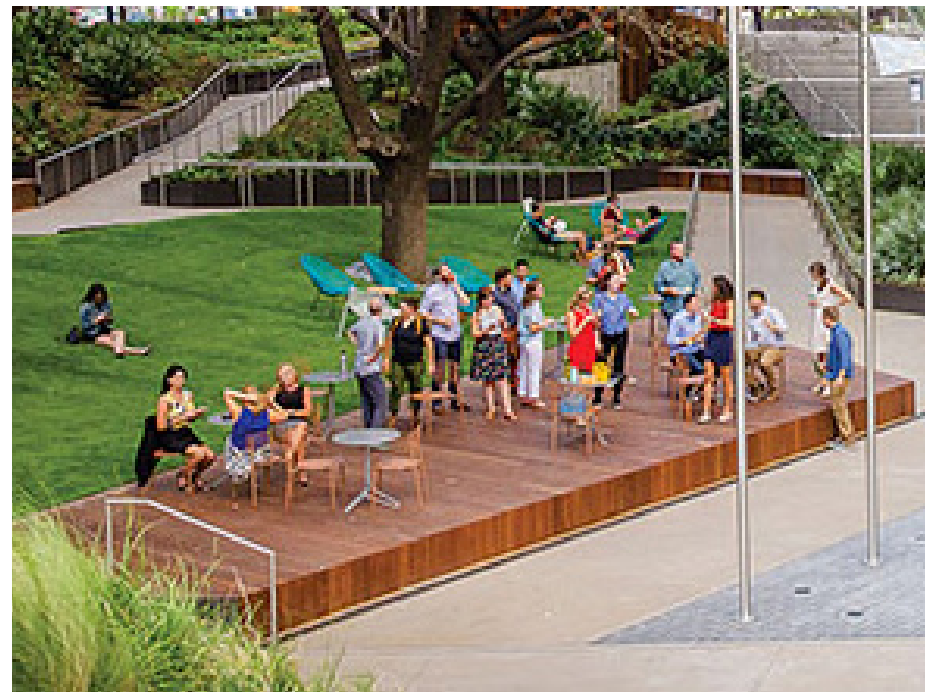
Water Play



Open Lawn



Flex Deck



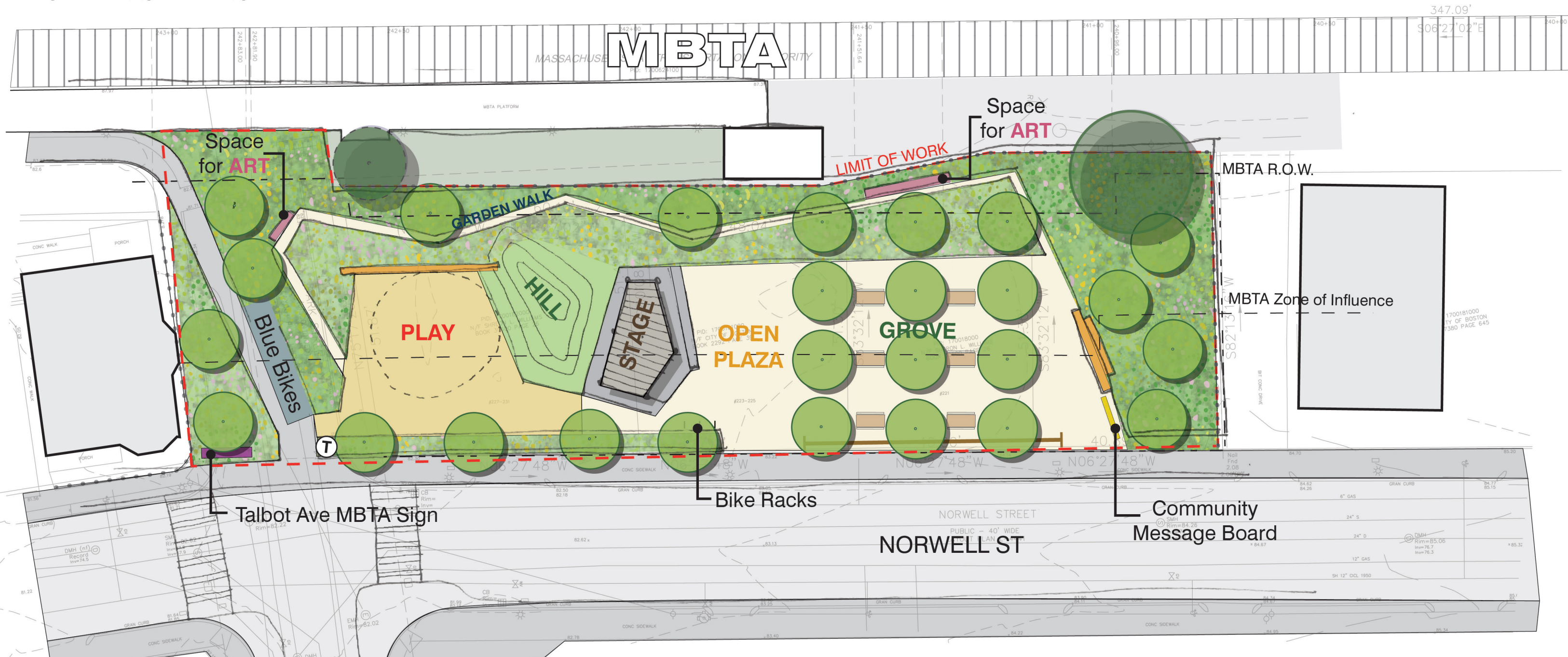
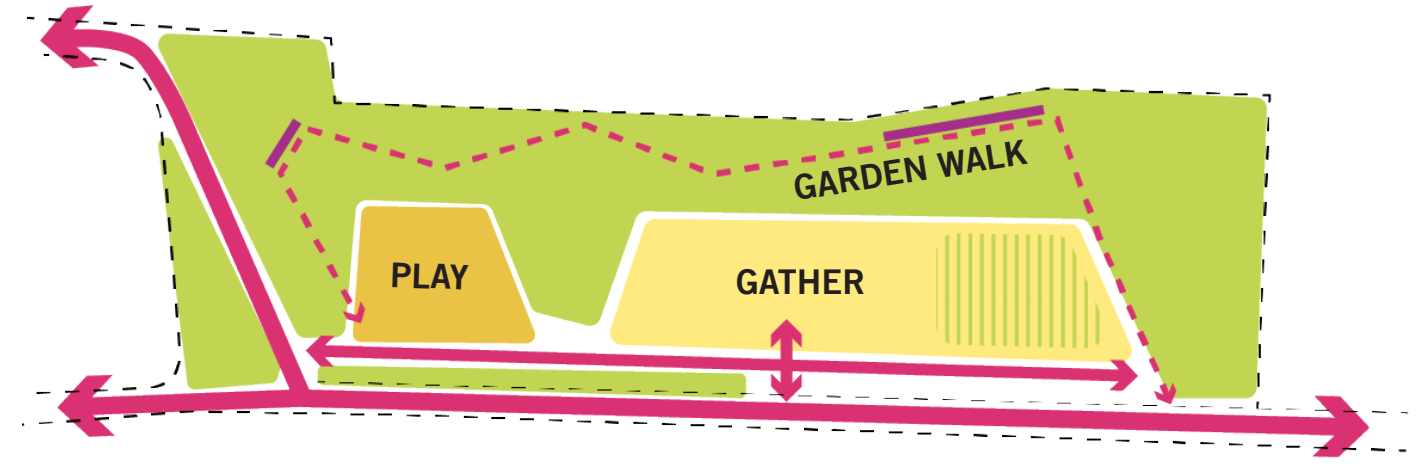
Trike Loop



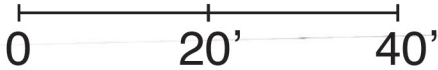
CONCEPT 2 : PLAN



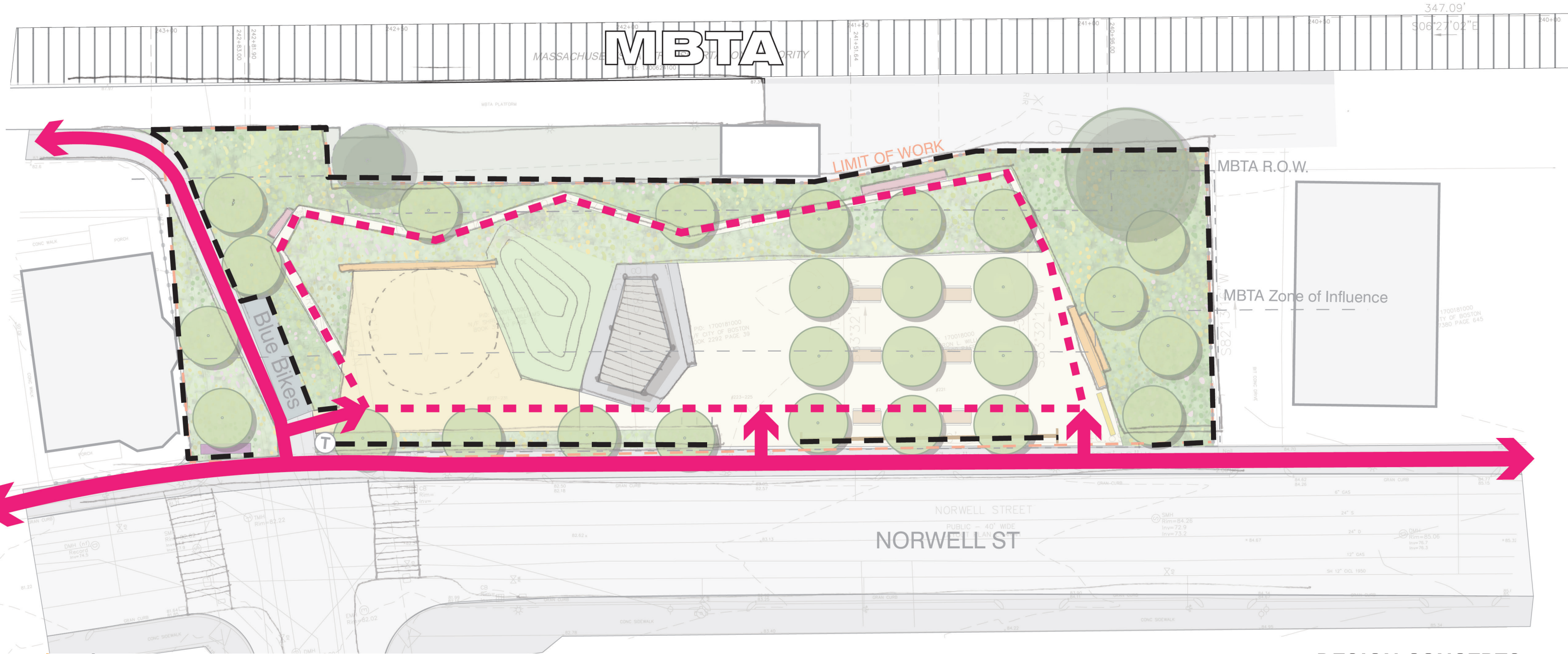
0 20' 40'



CONCEPT 2 : PAVED ACCESSIBLE CIRCULATION

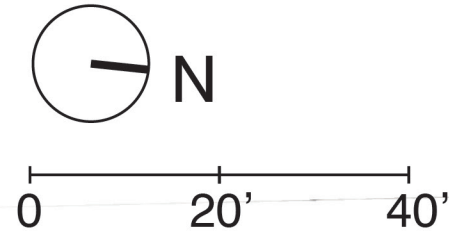


- Fence
- █ Primary Circulation
- - - Activity Loop



CONCEPT 2 : PROGRAM STUDY

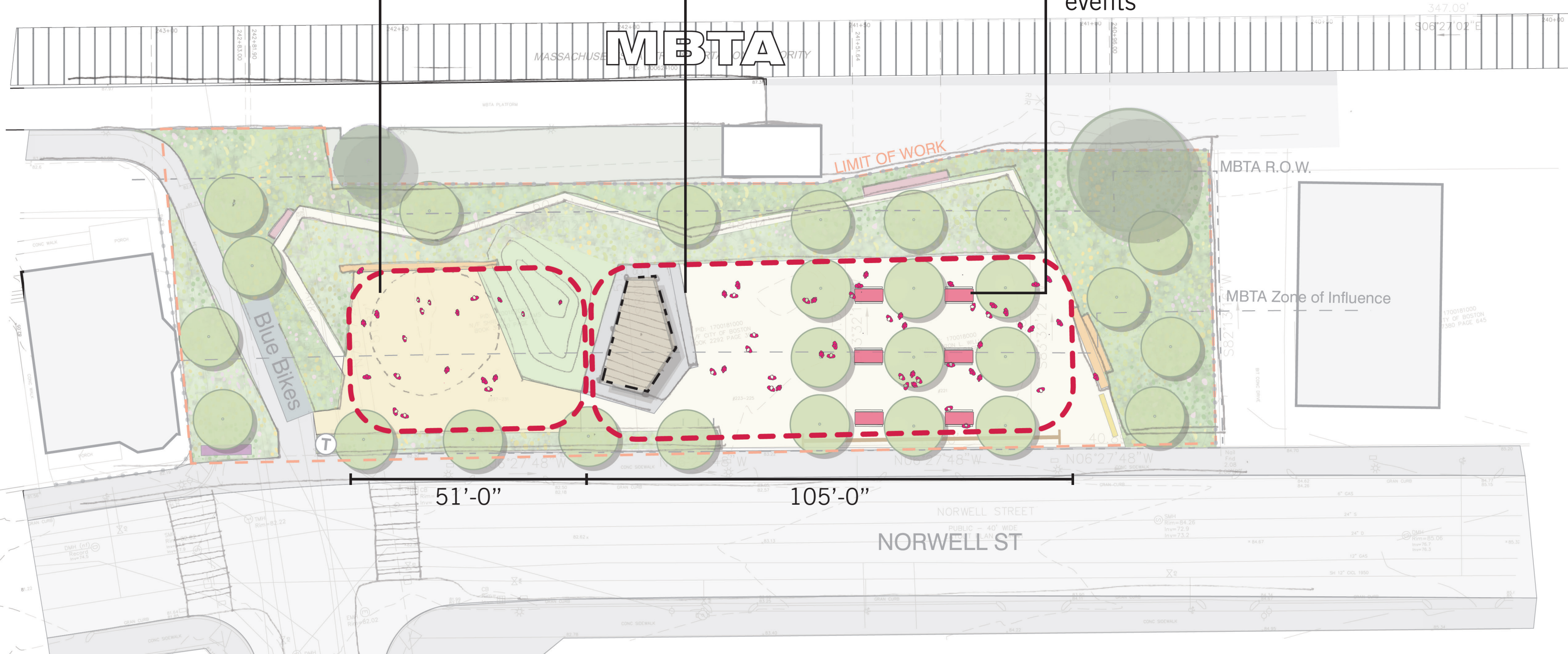
2 ROOMS



Play (950 sq ft)
 - 2-3 smaller features or 1 larger feature

Open Plaza (1,350 sq ft)
 - Lunch
 - Dancing
 - Music Event
 - Neighborhood gathering

Grove (1,350 sq ft)
 - Quiet gathering and picnic tables
 - Could be combined with open plaza for larger events



CONCEPT 2 : PRECEDENTS

NOTE: Final finishes to be confirmed based on funding and budget

Play Elements



Slide in Landform



Garden Walk



Stage with Shade Structure



Flex Plaza



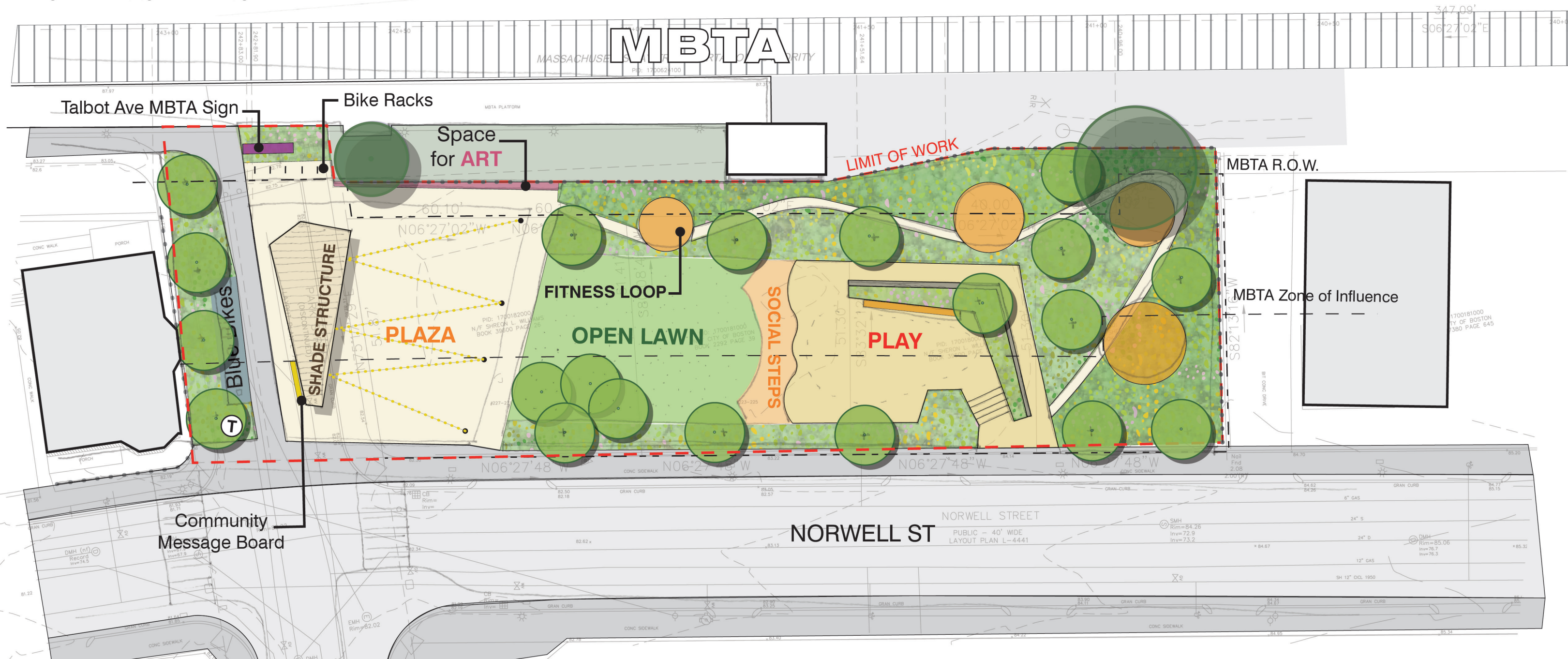
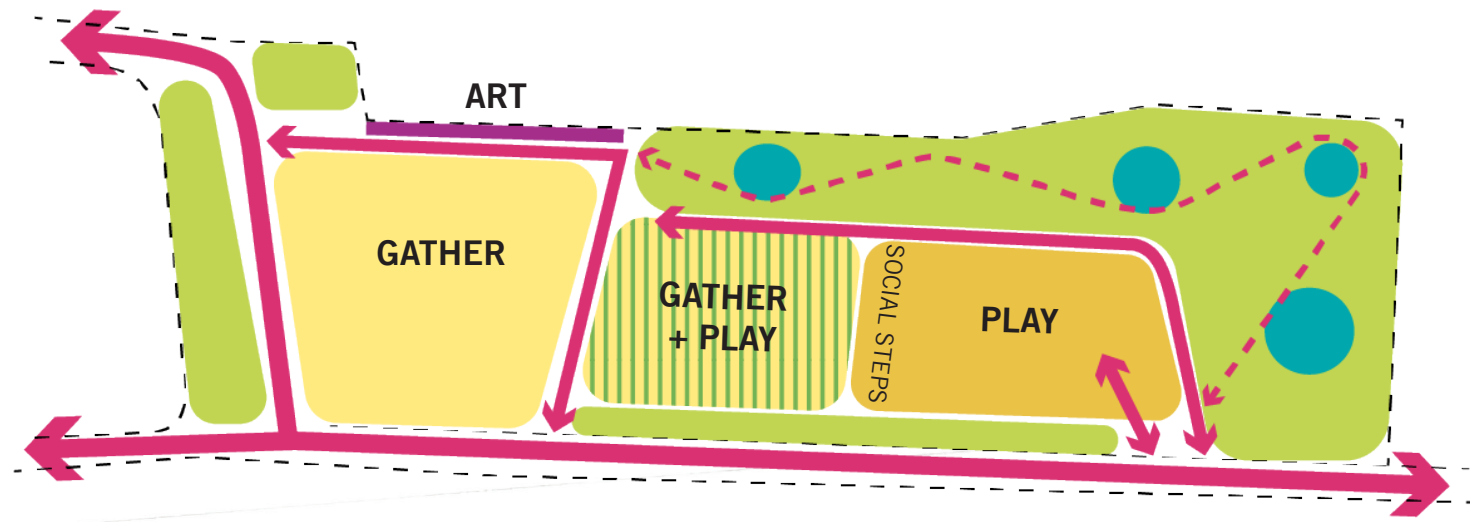
Grove with Picnic Tables



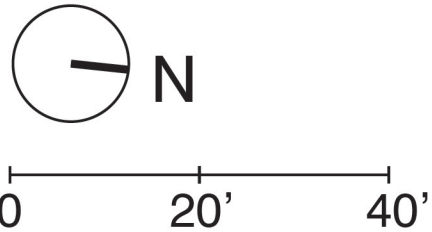
CONCEPT 3 : PLAN



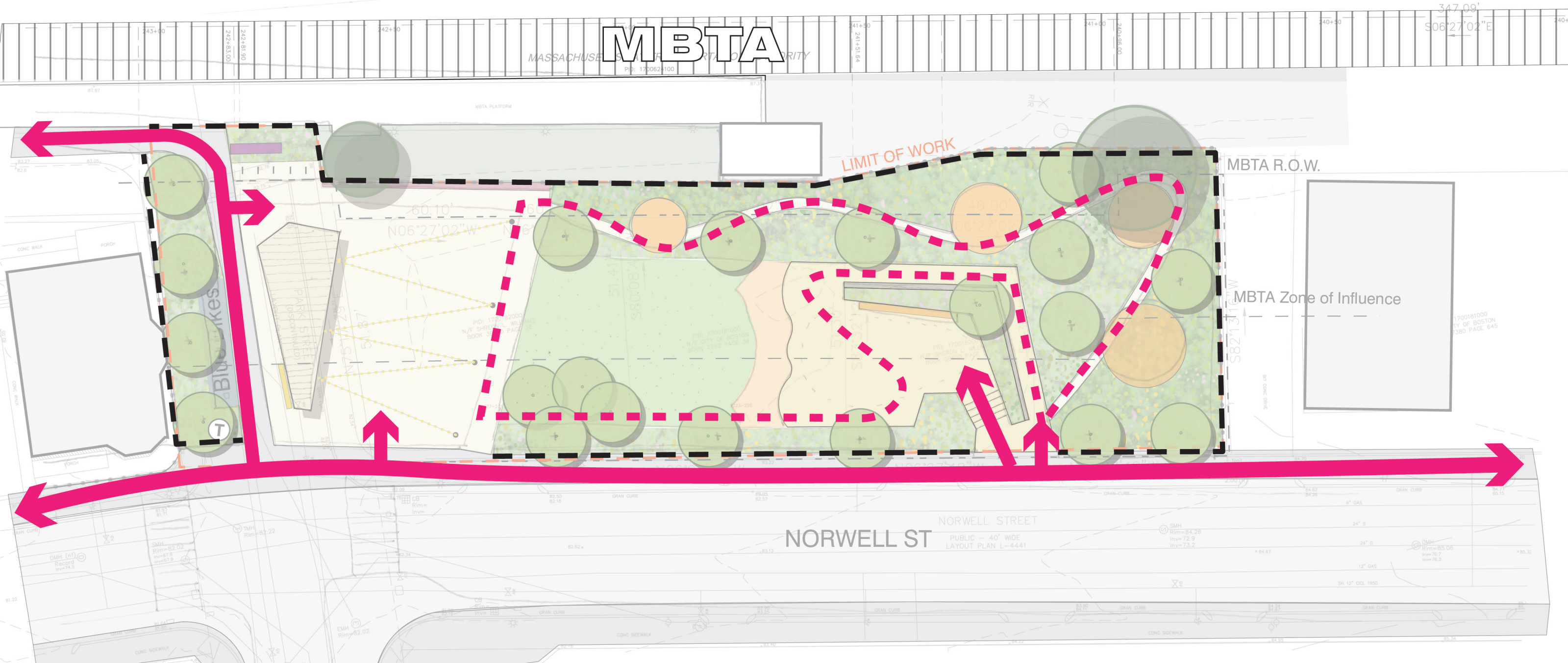
0 20' 40'



CONCEPT 3 : PAVED ACCESSIBLE CIRCULATION

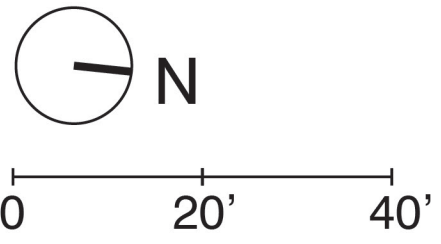


- Fence
- █ Primary Circulation
- - - Activity Loop



CONCEPT 3 : PROGRAM STUDY

3 ROOMS



Flexible Plaza
(1,500 sq ft)
- Seating
- Neighborhood gatherings

Open Lawn (1,625 sq ft)
- Flex lawn games
- Could be combined with plaza for larger events

Play Overlook (825 sq ft)
- 2-3 smaller play features or 1 larger feature

Fitness pod
(typical of 4)



CONCEPT 3 : PRECEDENTS

NOTE: Final finishes to be confirmed based on funding and budget

Flexible Plaza



NOTE: Moveable furnishing is not part of this design option

Open Lawn



Play Overlook



Fitness Loop



Social Steps



Fixed Furniture



PLAY IDEAS

Interactive Feature (sound chimes)



Water Play (mister poles)



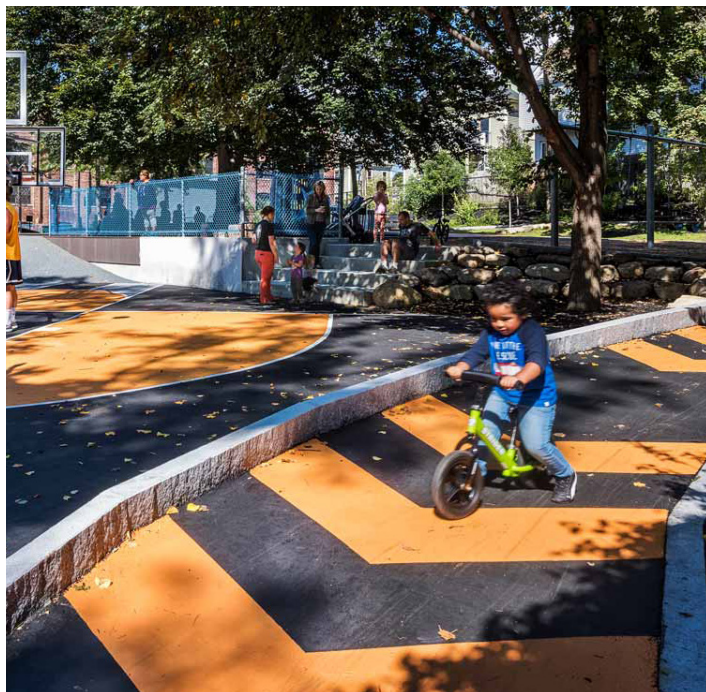
Natural Play Elements



Large Feature (climbing structure)



Trike Loop



Landform Slide



Open Lawn

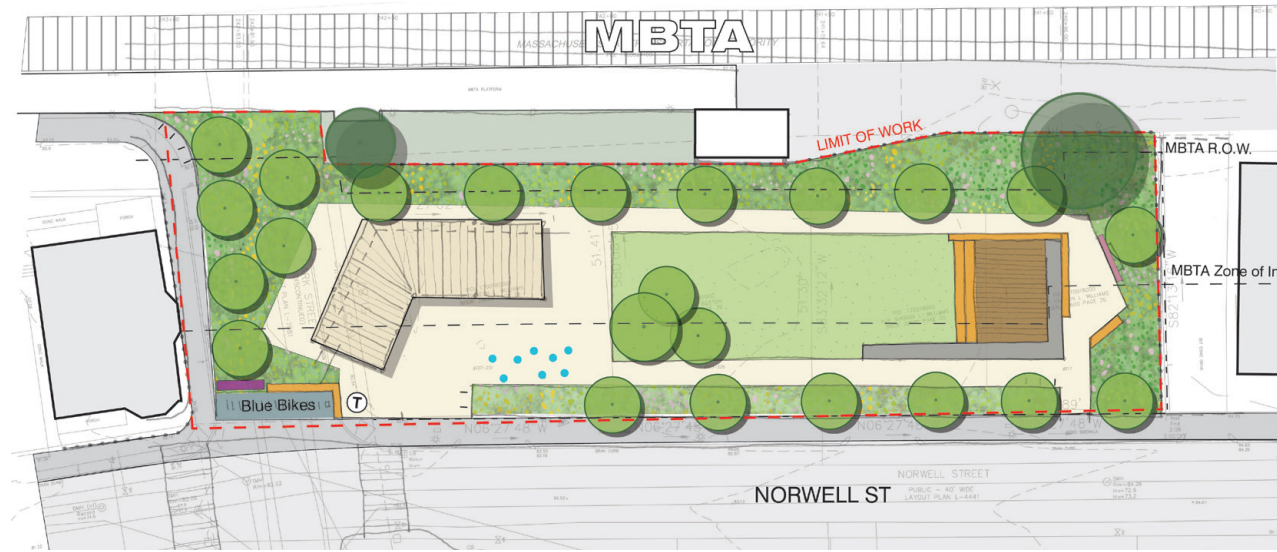


Small Feature (spinner or seesaw)



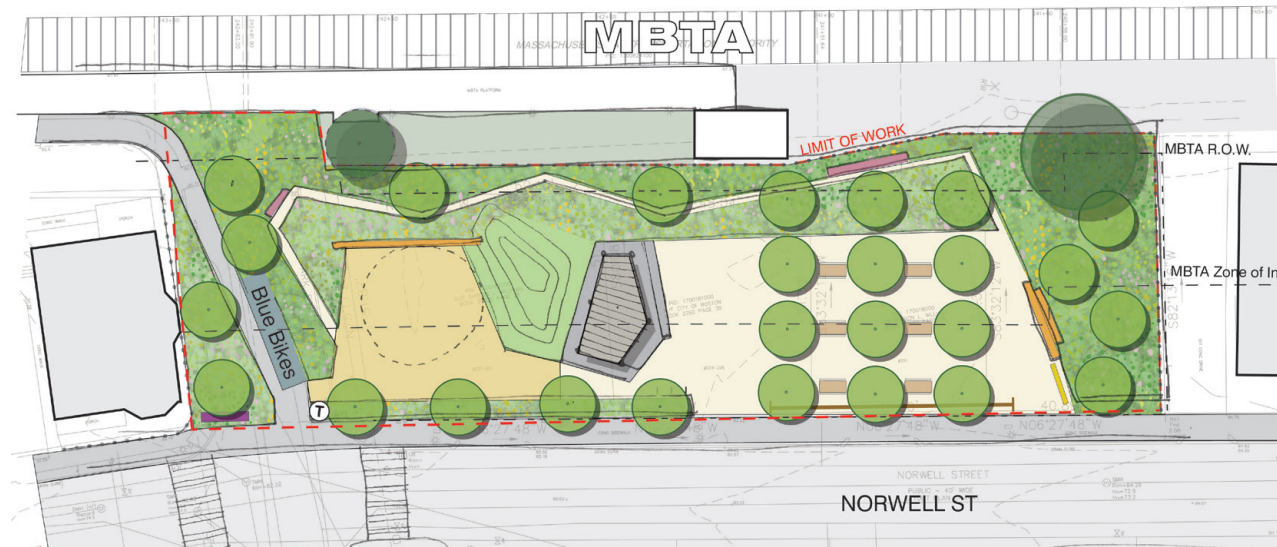
SHARE YOUR THOUGHTS

CONCEPT 1
ONE ROOM



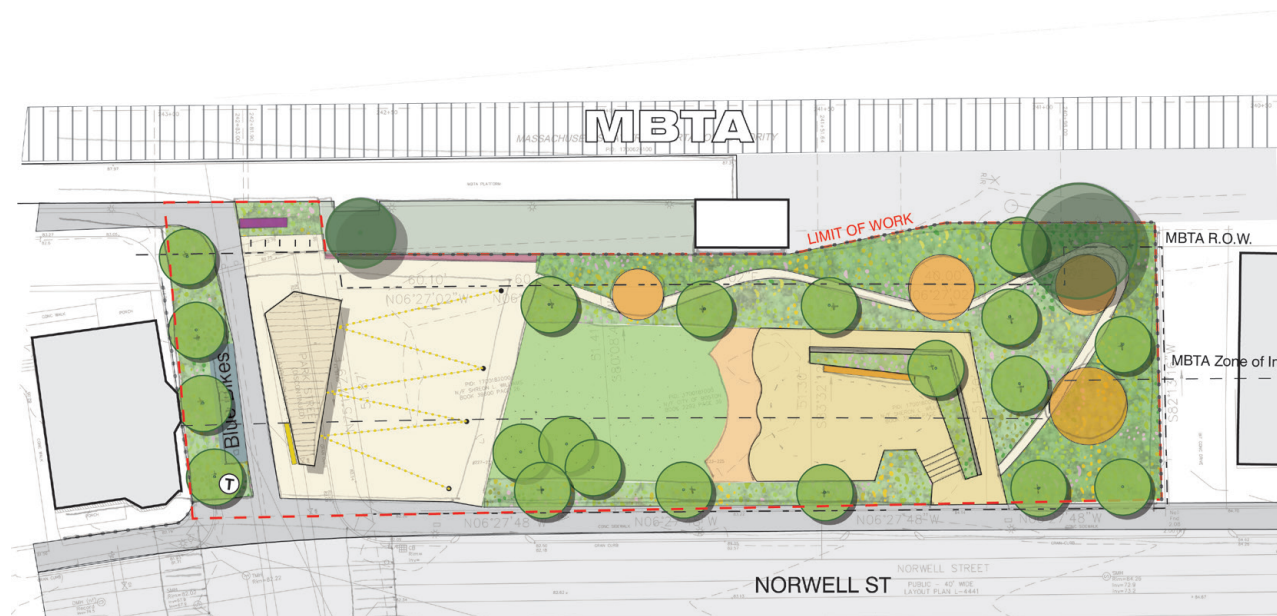
Play and gather programming are combined throughout whole site with an activity loop.

CONCEPT 2
TWO ROOMS



Play and gathering are separate rooms with an activity loop.

CONCEPT 3
THREE ROOMS



Three distinct rooms with an activity loop.

LISTENING AND DISCUSSION

OPEN SPACE AND RECREATION PLAN

*How well is Boston's park system working for you?
How can we do better?*

*The Boston Parks and Recreation Department is updating our
Open Space and Recreation Plan and we'd like to hear from you.
Take our survey by May 31, 2022.*



boston.gov/open-space

The Boston Parks and Recreation Department is updating our

OPEN SPACE AND RECREATION PLAN

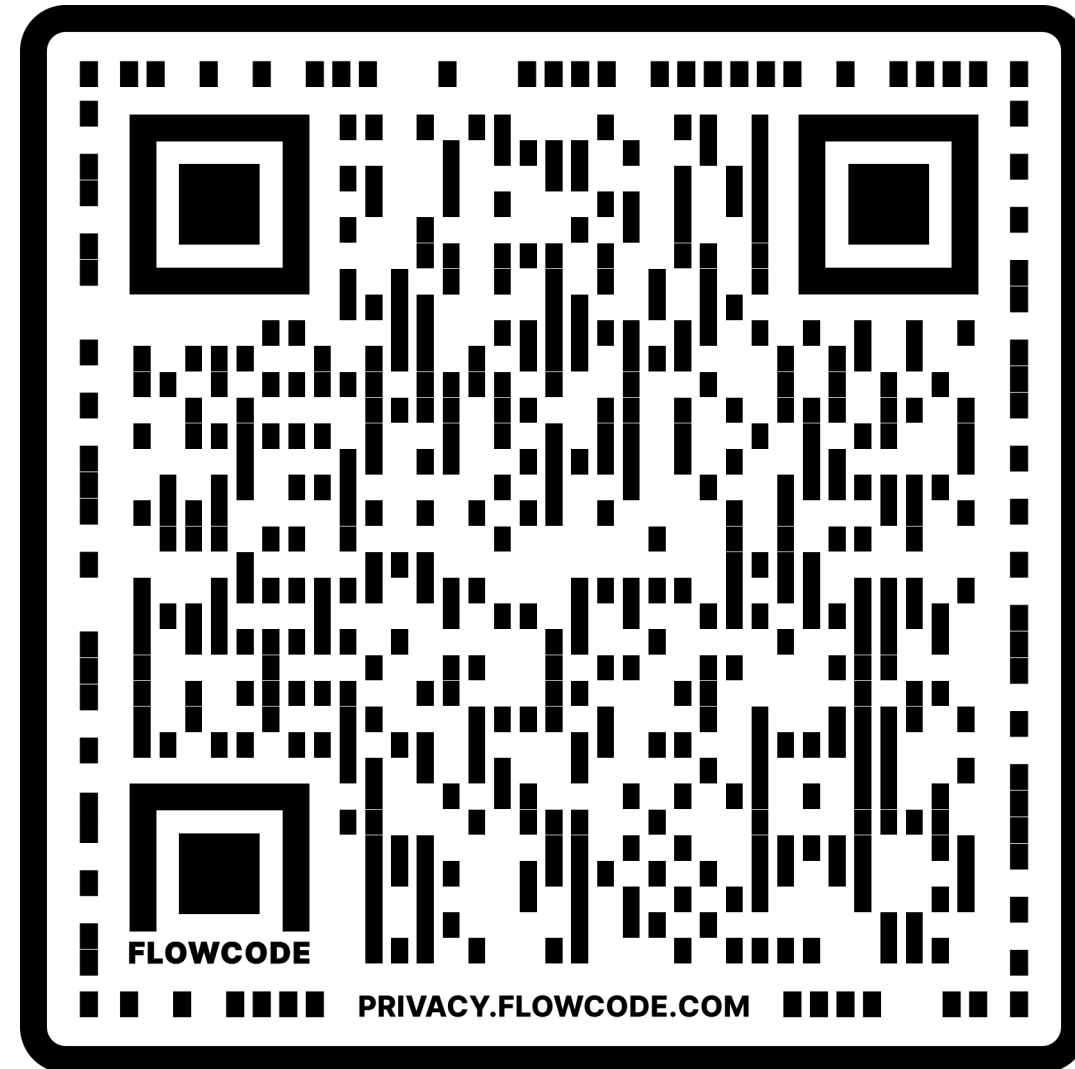
boston.gov/open-space

*Take our survey! We'd like to
hear from you.*



City of Boston
Parks and Recreation

SHARE YOUR THOUGHTS

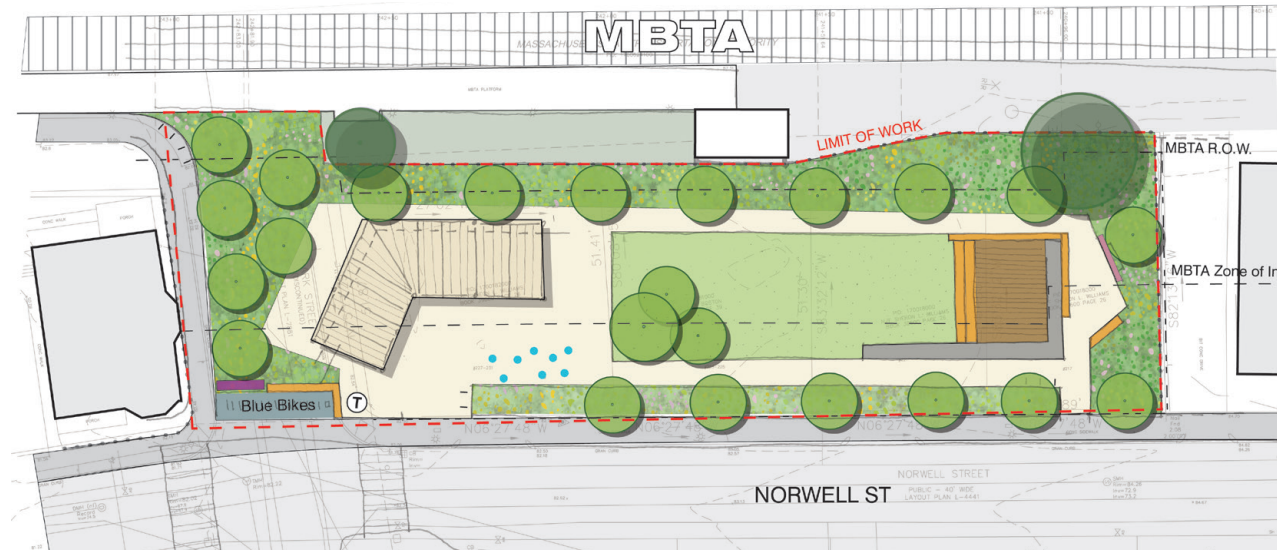


Scan this QR code to give us your feedback on these design options! Or use this link: <https://bit.ly/norwellparkmeeting2>

If you have any further questions please contact B Chatfield at abigail.chatfield@boston.gov, 617-504-7709.

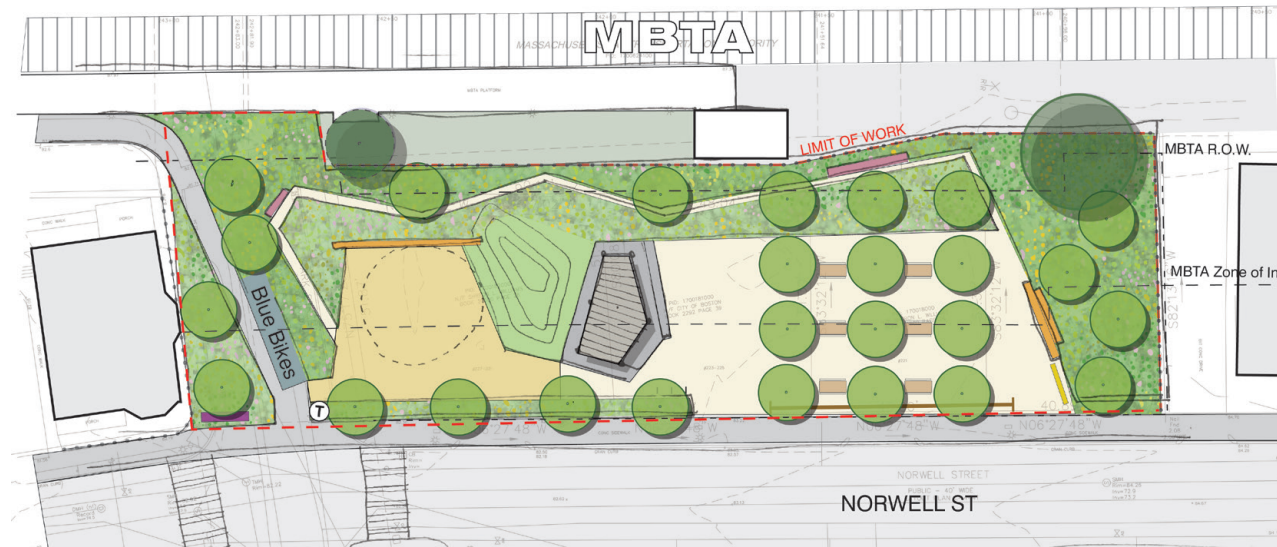
SHARE YOUR THOUGHTS

CONCEPT 1
ONE ROOM



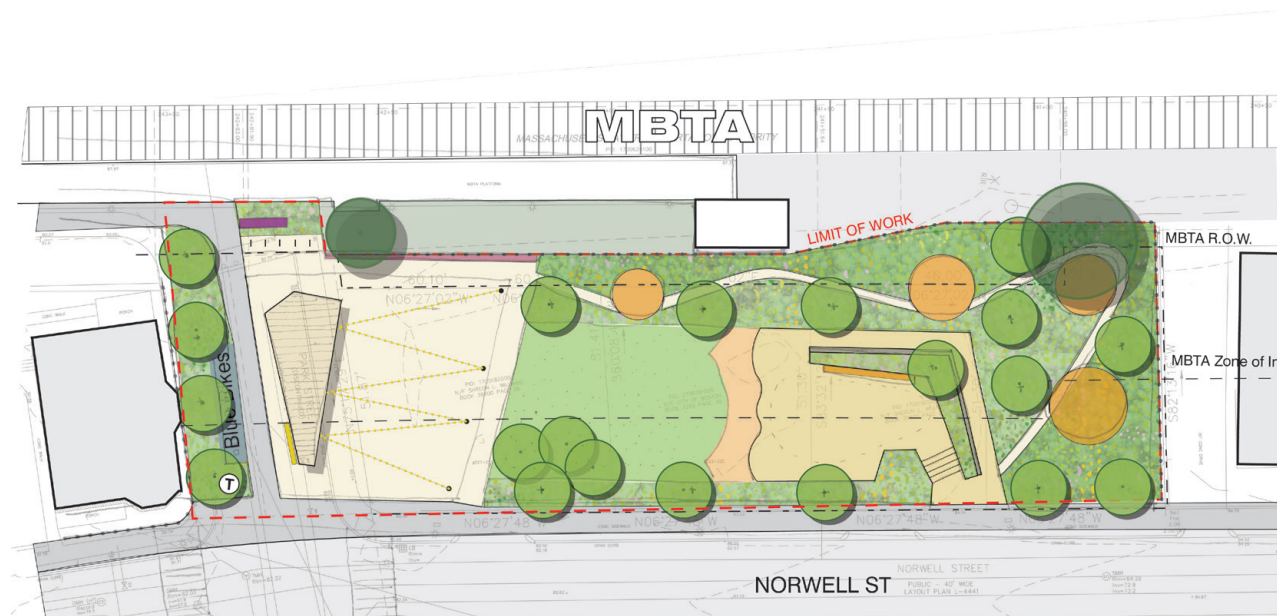
Play and gather programming are combined throughout whole site with an activity loop.

CONCEPT 2
TWO ROOMS



Play and gathering are separate rooms with an activity loop.

CONCEPT 3
THREE ROOMS



Three distinct rooms with an activity loop.

LISTENING AND DISCUSSION

PROJECT SCHEDULE & FUNDING

