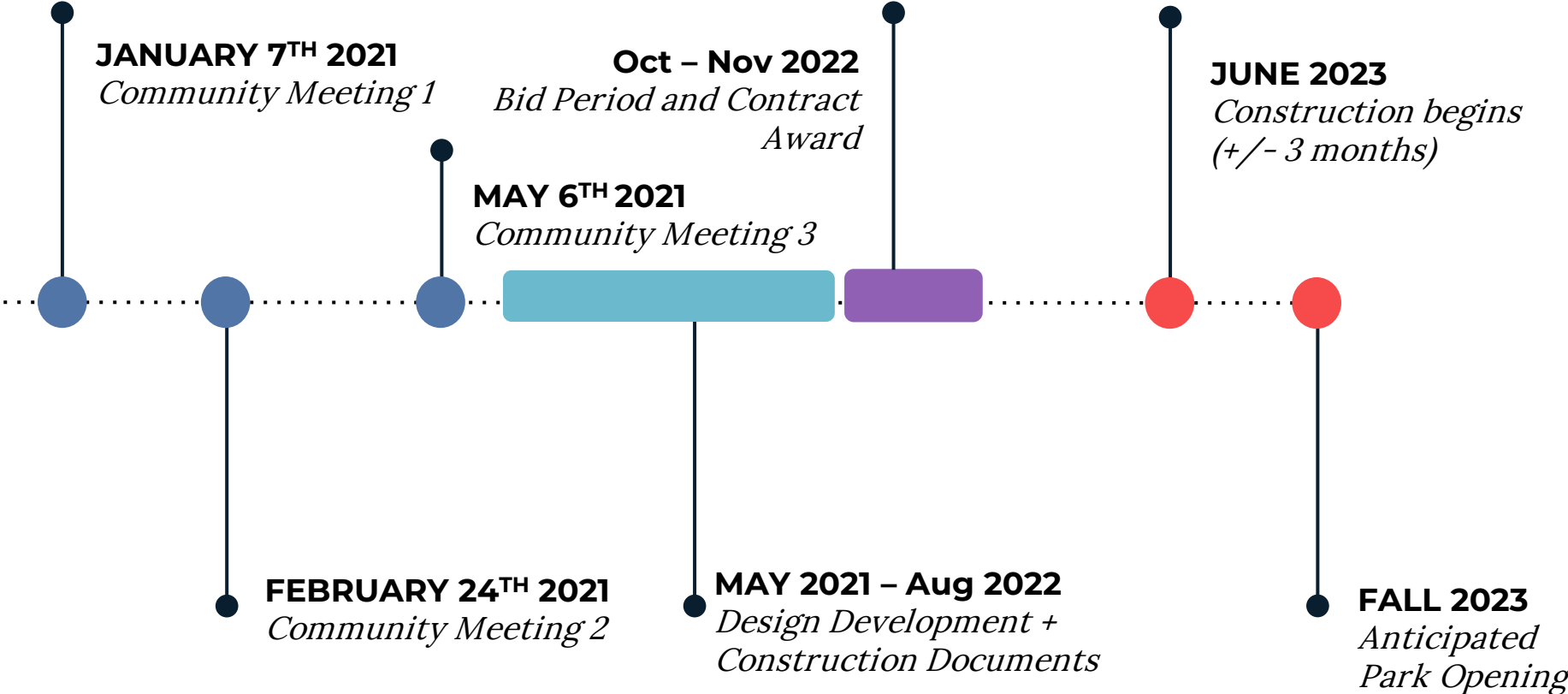


*Improvements to*  
**CLARENDON STREET  
PLAYGROUND**

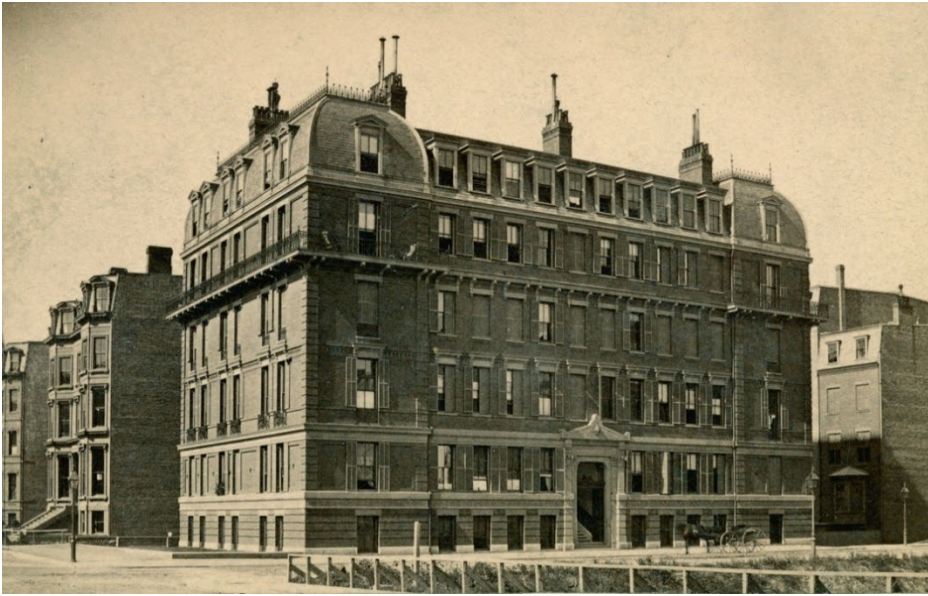


# PROJECT SCHEDULE & FUNDING

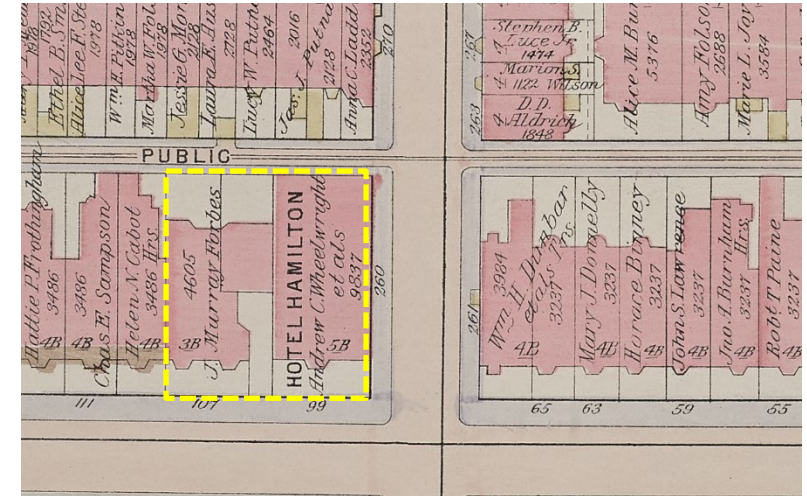
\$ 1,237,000 Capital Funding



# SITE HISTORY



260 Clarendon (ca. 1873), courtesy of the Bostonian Society

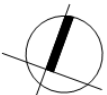
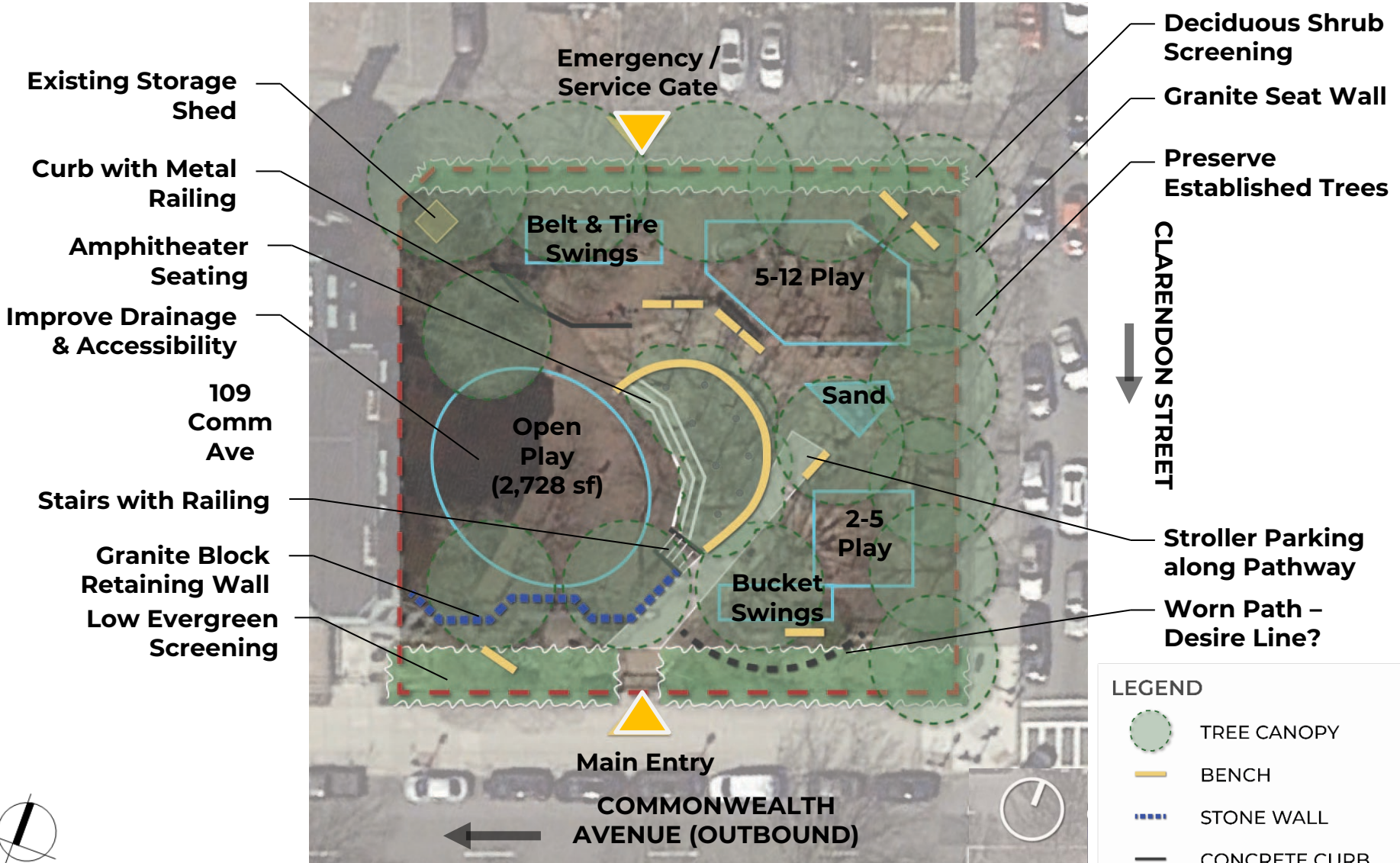


Atlas of the city of Boston, Boston proper and Back Bay : from actual surveys and official plans. plate 20, 1922, courtesy of Digital Commonwealth

North side of Commonwealth looking east, with 109-111 Commonwealth in foreground on left Commonwealth (ca. 1890); courtesy of Barry and Judith Solar

# OVERALL SITE ANALYSIS

PUBLIC ALLEY 424



# WHAT WE HEARD

*The service gate/emergency access along the alley can be shifted. It does not need paved access into the park. Add clear signage.*

## PARK AMENITIES

*Modify the fence to mitigate head entrapment issues.*

*Add low level lighting for use in early evenings*

*Add a community bulletin board*

*City kids have little access to nature itself, so keeping the existing natural elements - vegetation, trees, ground level discovery areas as tactile play - is critical.*

## PLANTINGS & AESTHETICS

*Ensure all plantings are hardy and protected.*

*"Preserve the flavor of the playground" - the park's aesthetic should fit seamlessly into the neighborhood (e.g. natural color scheme, green and open)*

## PLAY VALUE

*Maximize the play value of the space. Musical instruments and water play were not endorsed.*

*Kids of all ages use the park and the local schools bring students to the park on a coordinated schedule for play. The play equipment needs to be able to handle rigorous use from all ages and construction should work around the school year schedule.*

## OPEN PLAY

*Keep open play separated and at the lower level. Maintain as large an area for open play as possible. Keep 2-5 year and 5-12 year play separated.*

*The open play area is extremely important and central to this space as a freeform play area and community space for neighborhood events.*

# PREFERRED PLAN, 2021

Emergency /  
Service Gate

PUBLIC ALLEY 424

Swings

Basket  
Swing

Spinner

5-12 Play

Open  
Play  
(2,470 sf)

Sensory  
Play

109  
Comm  
Ave

CLARENDON  
STREET

2-5 Play

Main Entry

COMMONWEALTH  
AVENUE (OUTBOUND)



# REVISED PLAN, 2022

Emergency / Service Gate

PUBLIC ALLEY 424

Basket Swings

Spinner

5-12 Play

Open Play (2,568 sf)

Sensory Play

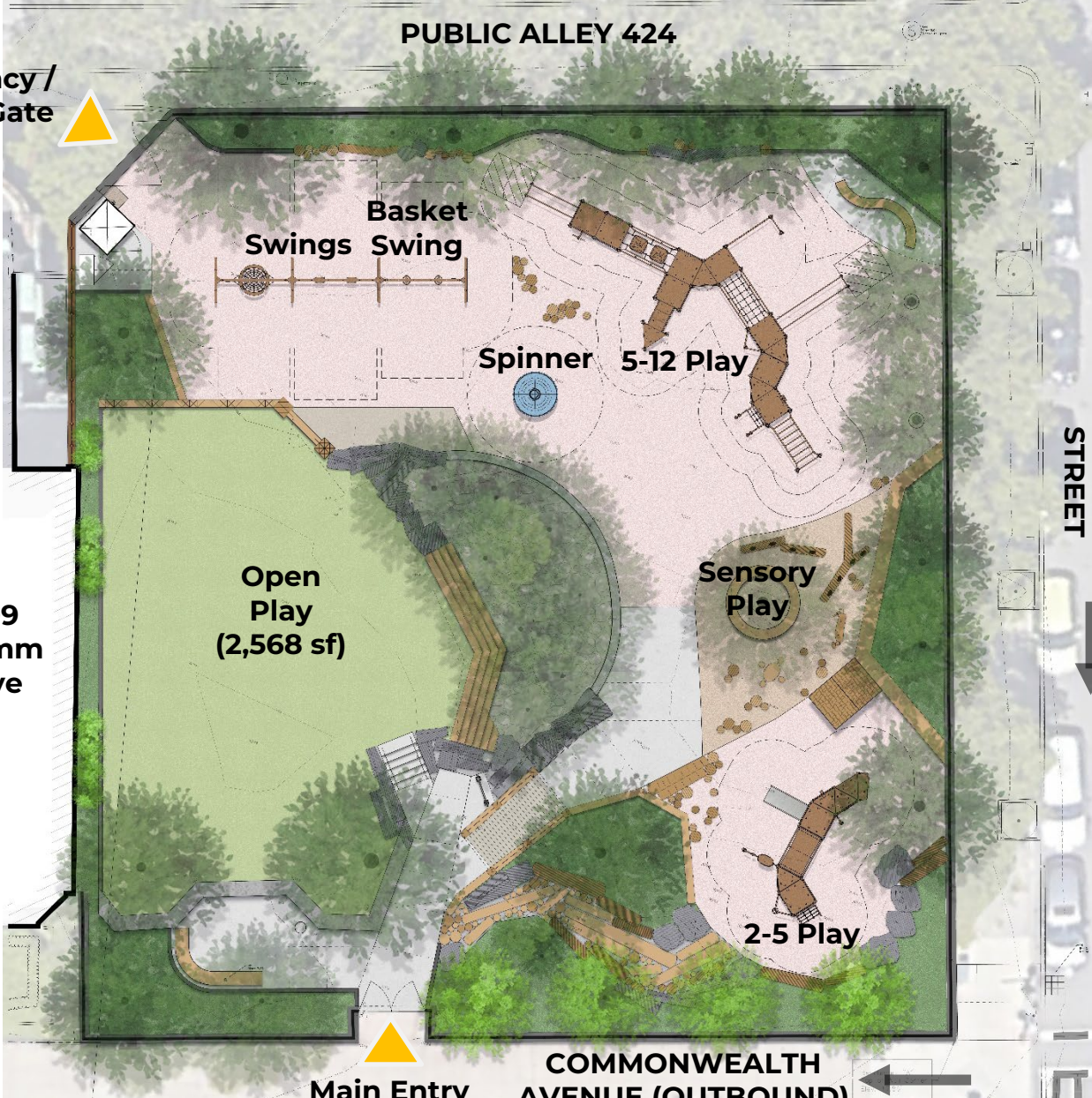
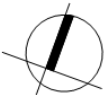
CLARENDON STREET

109 Comm Ave

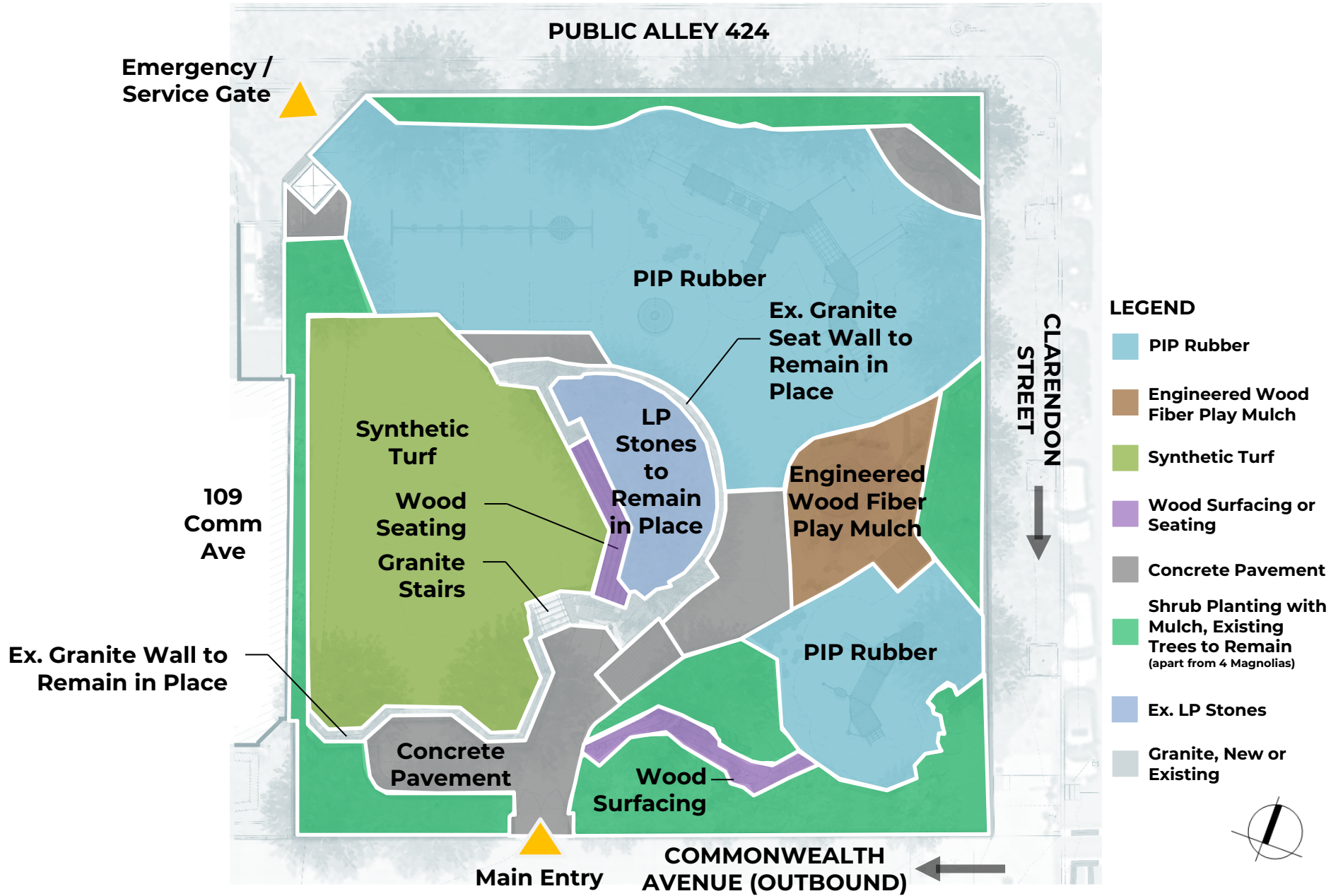
2-5 Play

Main Entry

COMMONWEALTH AVENUE (OUTBOUND)



# REVISED PLAN - SURFACING





# REVISED PLAN - SURFACING

---



Synthetic Turf



Poured-in-place (PIP)  
Rubber Surfacing



Concrete



Engineered Wood Fiber Mulch

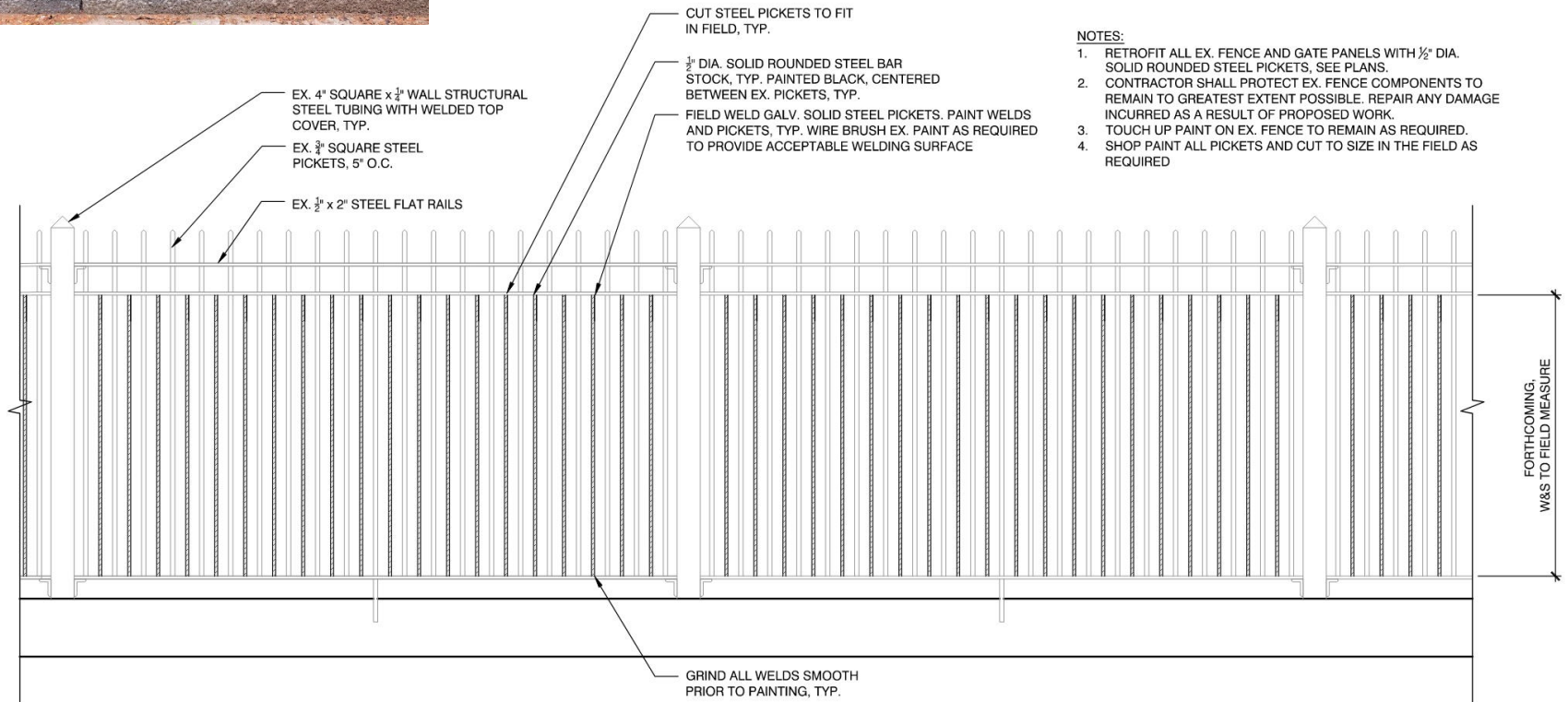


Wood Surfacing

# PERIMETER FENCE MODIFICATION



Existing  
Perimeter  
Fence



# EXISTING PLANTING PALETTE

---



Star Magnolias (*M. stellata*)  
Along Comm Ave



Perimeter Shrub Planting  
Yews pictured along Comm Ave



Deciduous Canopy Trees (Pears pictured)  
In Playground Interior

# UNDERSTORY PLANTING PALETTE

---



**Arctic Fire Dogwood**  
White Flowers – Red Branches



**Variegated Red Twig Dogwood**  
Variegated Leaves – Red Branches



**Creeping Juniper**  
Evergreen – Blue Berries – Creeping Form



**Siberian Cypress**  
Evergreen – Creeping Form



**Gro-Low Fragrant Sumac**  
Fall Color – Red Berries – Creeping Form



**Blue Star Juniper**  
Evergreen – Blue Berries – Dwarf

# 2-5 Yr. Play Structure - Kompan

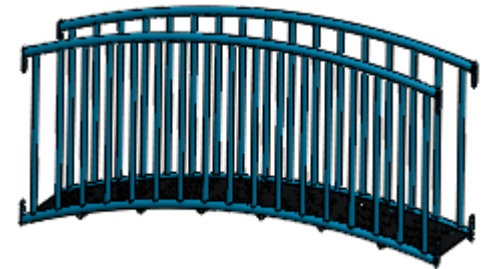
Bridge design  
under consideration



Bridge design  
under consideration



Example Aesthetic



Alternative Bridge  
Option  
(color to match poles)

# 5-12 Yr. Play Structure - Kompan

---



# Sensory Play Area

---



Sensory Logs



Maker Table - Kompan



Open Play House  
(two sided)



Maker Desk - Kompan

# SWINGS & INDEPENDENT PIECES

---

Swings - Kompan



Spinner - Berliner Disk



1 bay with 2 belts



1 bay with a basket



1 bay with 2 buckets



# 109 Comm Ave Building Facade

---



Evergreen Tree Planting  
between Windows





# THANK YOU!

Comments and questions?

