

BLC DESIGN REVIEW APPLICATION | 2022.08.11
303 CONGRESS SUN SHADE

HACIN + ASSOCIATES
500 HARRISON AVE. STUDIO 4F
BOSTON MA 02118
P 617.426.0077
WWW.HACIN.COM @HACINASSOCIATES

© 2019 HACIN ARCHITECTS LLC ALL RIGHTS RESERVED.

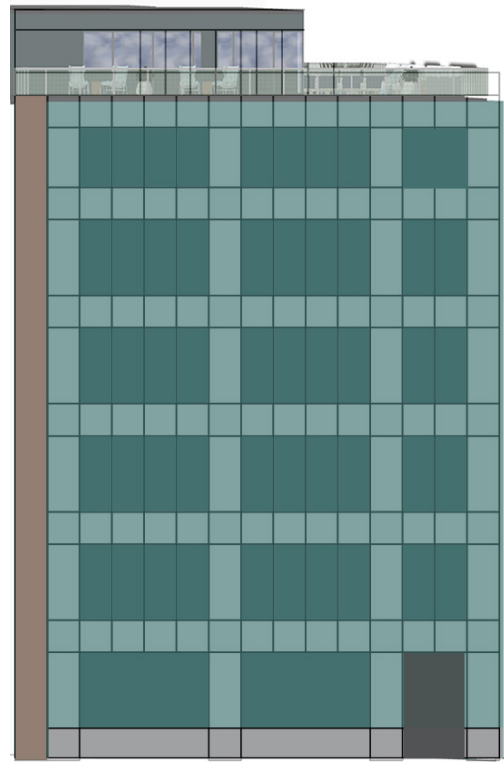


City of Boston
Landmarks Commission

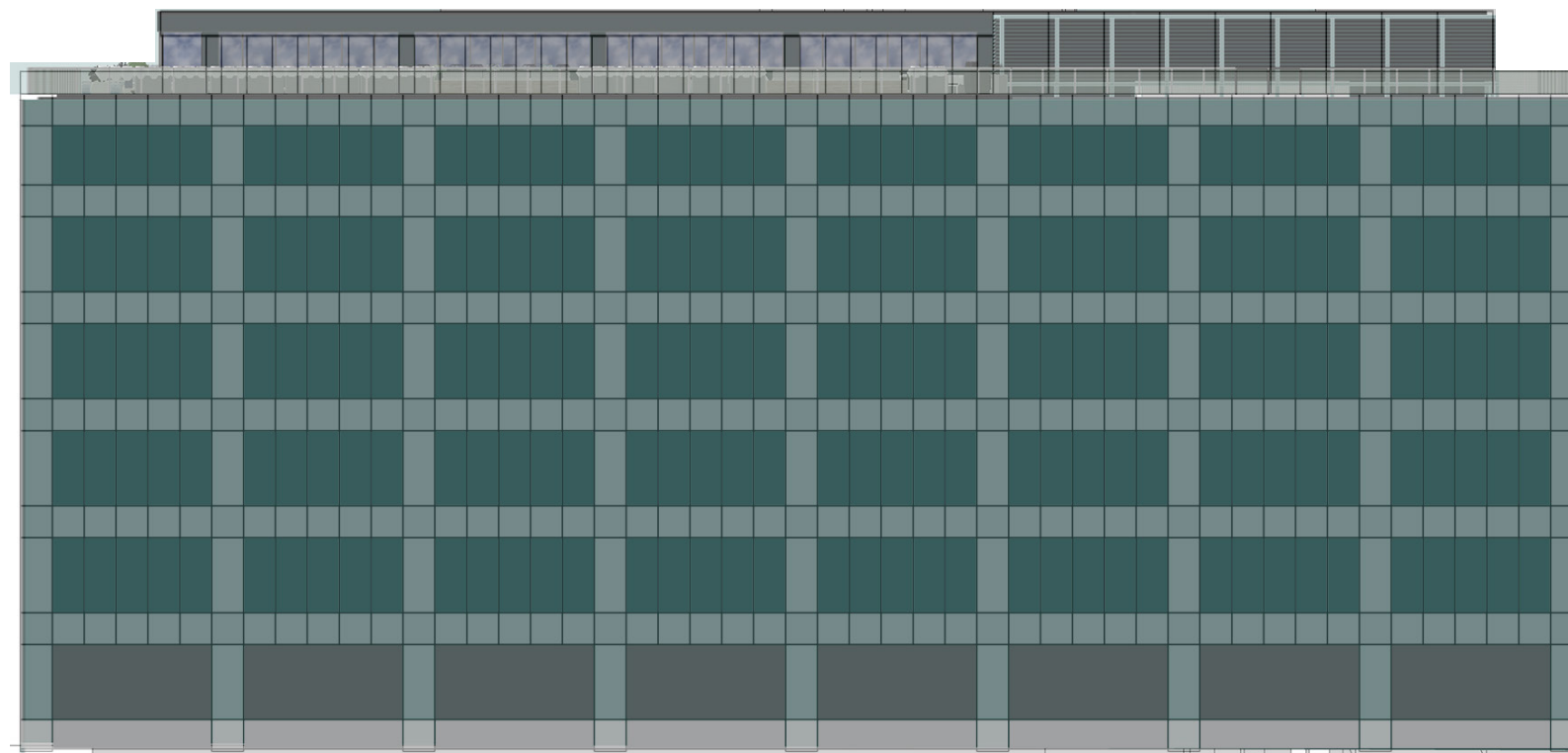




EXISTING VIEWS OF ROOFDECK LOOKING NORTH



EXISTING ELEVATION - NORTH FACADE



EXISTING ELEVATION - WEST FACADE

EXISTING CONDITIONS

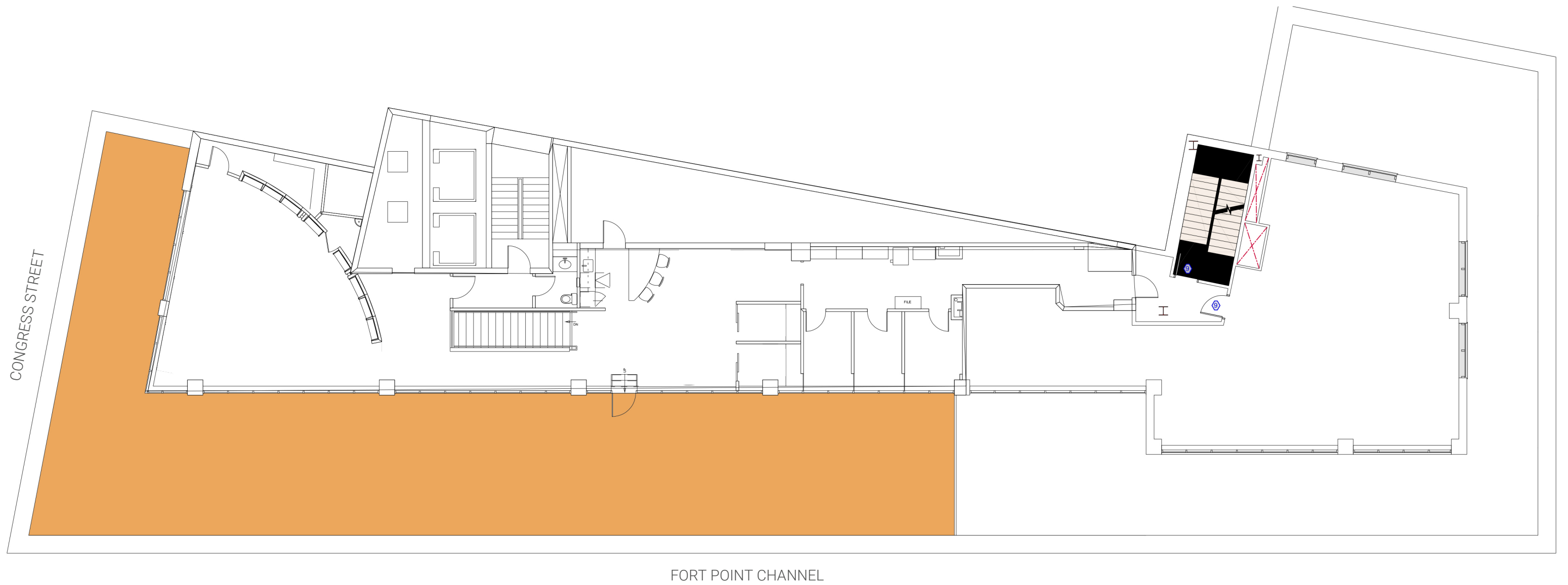
303 CONGRESS ST | DESIGN REVIEW APPLICATION | 2022.08.11

© 2019 HACIN ARCHITECTS LLC ALL RIGHTS RESERVED.



City of Boston
Landmarks Commission





EXISTING 7TH FLOOR PLAN

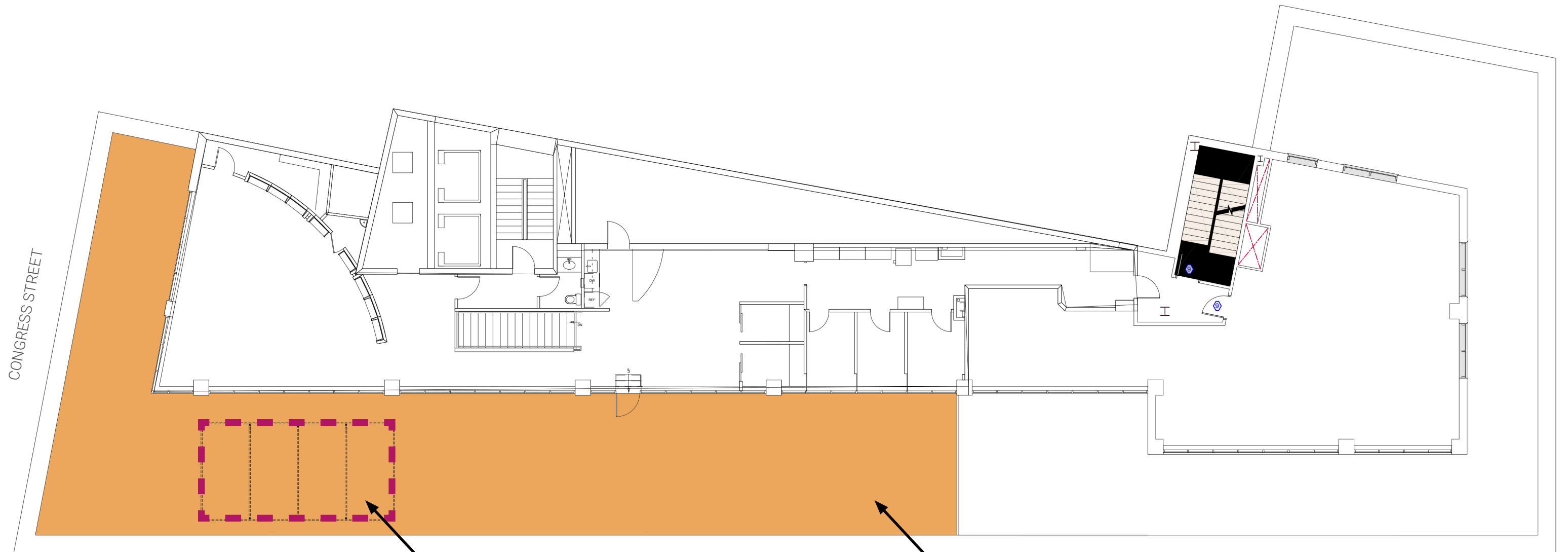
 USABLE ROOF DECK

EXISTING ROOF DECK PLAN

303 CONGRESS ST | DESIGN REVIEW APPLICATION | 2022.08.11

© 2019 HACIN ARCHITECTS LLC ALL RIGHTS RESERVED.





EXISTING 7TH FLOOR PLAN

 USABLE ROOF DECK

 PROPOSED SHADE STRUCTURE

SHADE IS 26'-6.5"W x 13'-3.25"D

ROOF DECK IS 125'-0"W x 19'-2"D

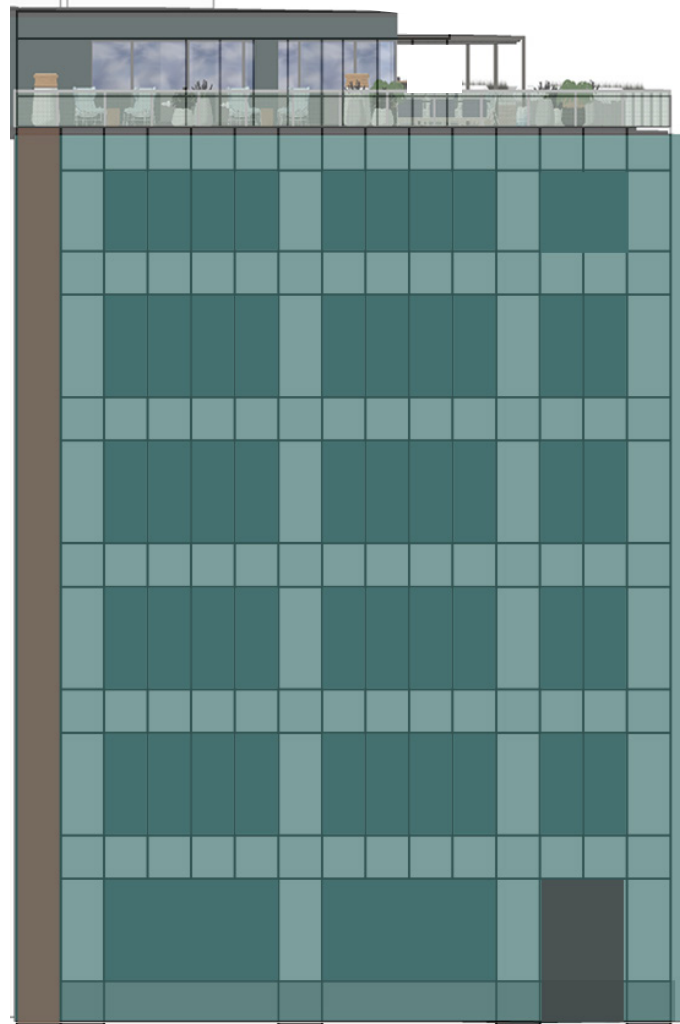
WE PROPOSE ALIGNING THE SHADE STRUCTURE WITH THE BASE SPACING OF THE FACADE, SO THAT THE END POSTS OF THE SHADE ALIGN WITH PILASTERS.

PROPOSED ROOF DECK PLAN

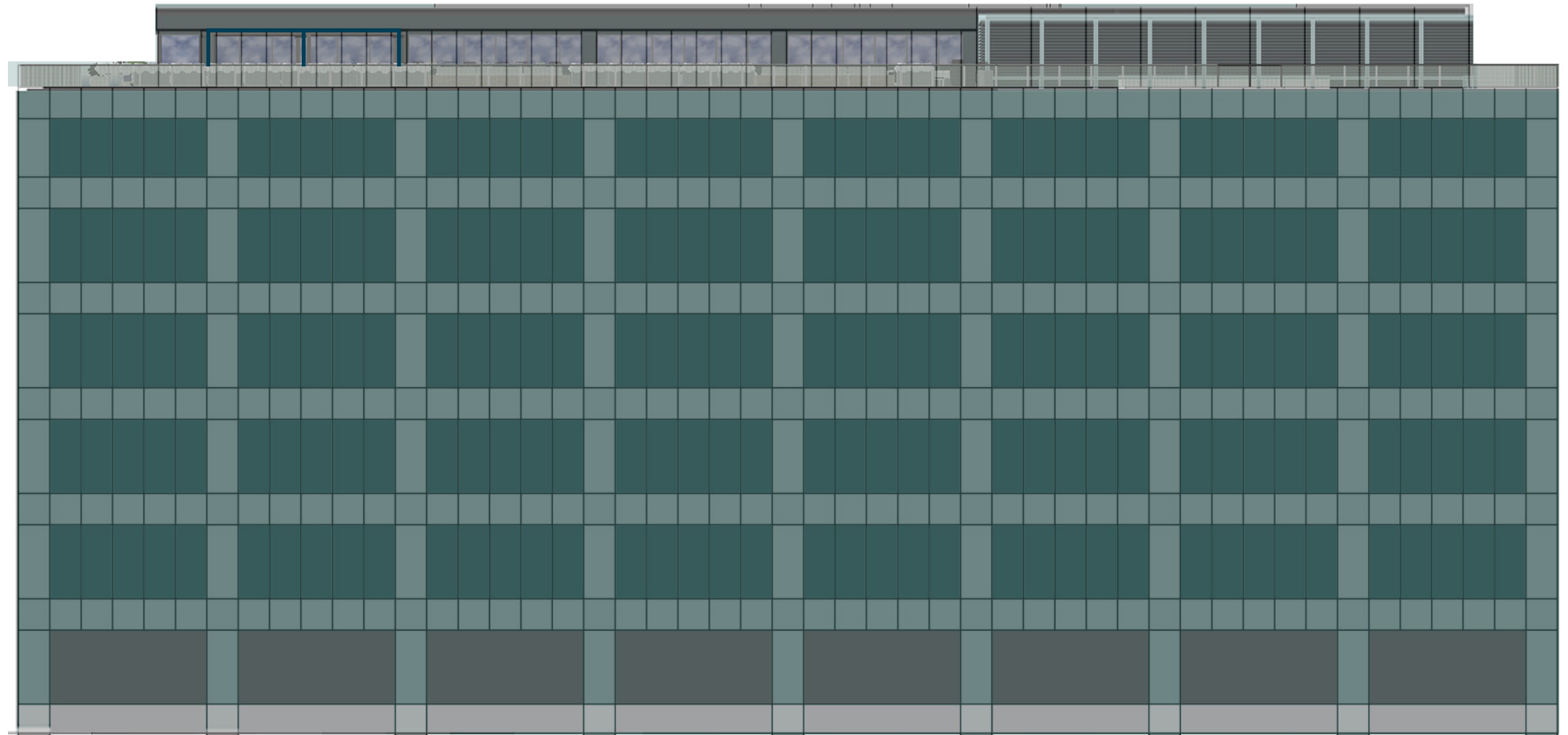
303 CONGRESS ST | DESIGN REVIEW APPLICATION | 2022.08.11

© 2019 HACIN ARCHITECTS LLC ALL RIGHTS RESERVED.





PROPOSED ELEVATION - NORTH FACADE



PROPOSED ELEVATION - WEST FACADE

PROPOSED ELEVATIONS

303 CONGRESS ST | DESIGN REVIEW APPLICATION | 2022.08.11

© 2019 HACIN ARCHITECTS LLC ALL RIGHTS RESERVED.





PROPOSED VIEWS OF ROOFDECK LOOKING NORTH



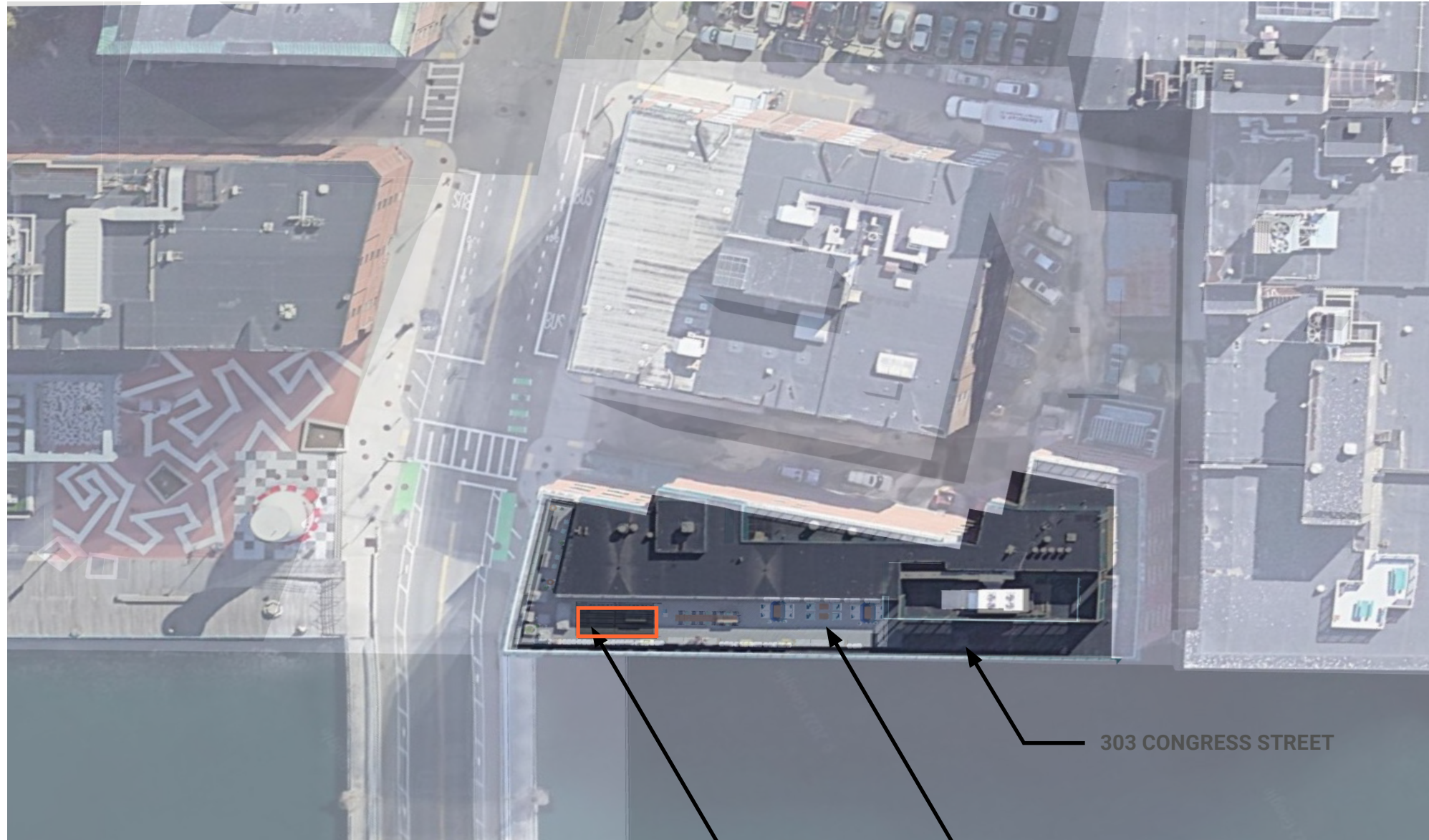
PROPOSED VIEWS OF ROOFDECK LOOKING SOUTH

MOCKUP OF PROPOSED SHADE

303 CONGRESS ST | DESIGN REVIEW APPLICATION | 2022.08.11

© 2019 HACIN ARCHITECTS LLC ALL RIGHTS RESERVED.





303 CONGRESS STREET

SHADE IS
26'-6.5"W x 13'-3.25"D

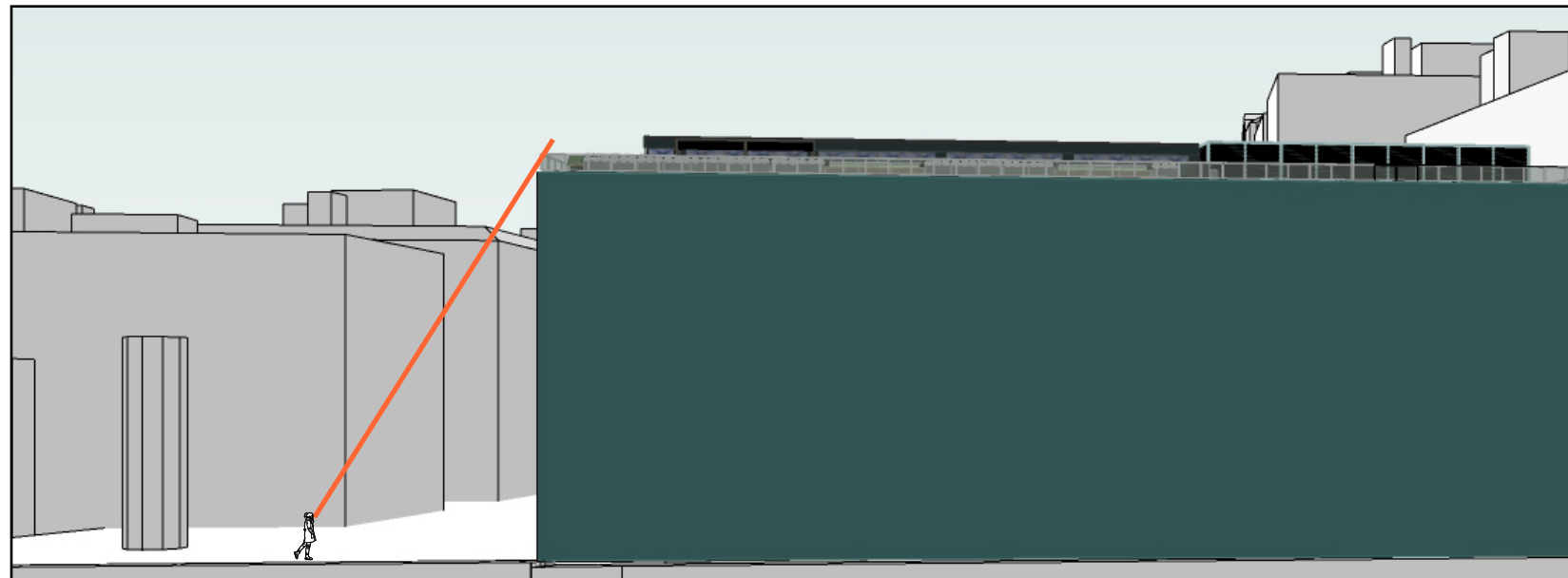
ROOF DECK IS
125'-0"W x 19'-2"D

BLOCK PLAN

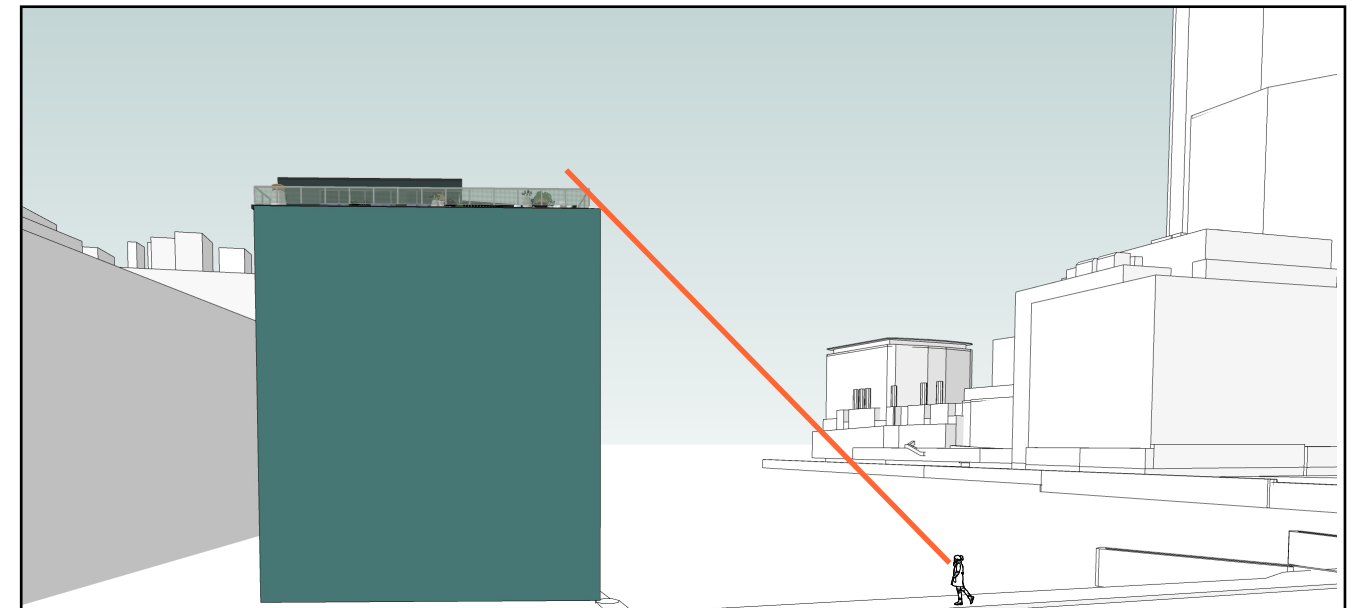
303 CONGRESS ST | DESIGN REVIEW APPLICATION | 2022.08.11

© 2019 HACIN ARCHITECTS LLC ALL RIGHTS RESERVED.





SIGHTLINE FROM SIDEWALK ACROSS CONGRESS STREET



SIGHTLINE FROM CHANNEL ON THE BRIDGE

SIGHTLINE SECTIONS

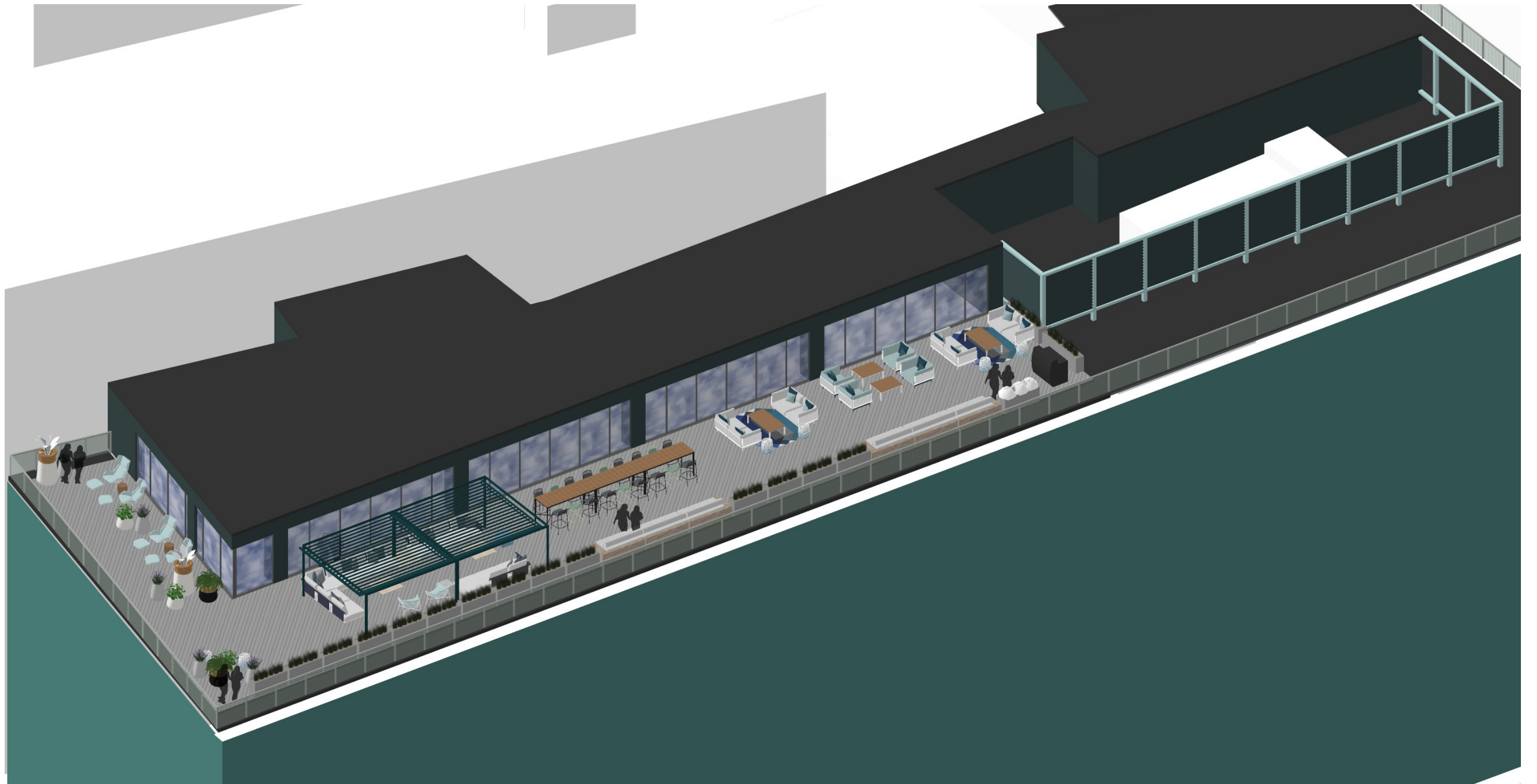
303 CONGRESS ST | DESIGN REVIEW APPLICATION | 2022.08.11

© 2019 HACIN ARCHITECTS LLC ALL RIGHTS RESERVED.



City of Boston
Landmarks Commission





RENDERING

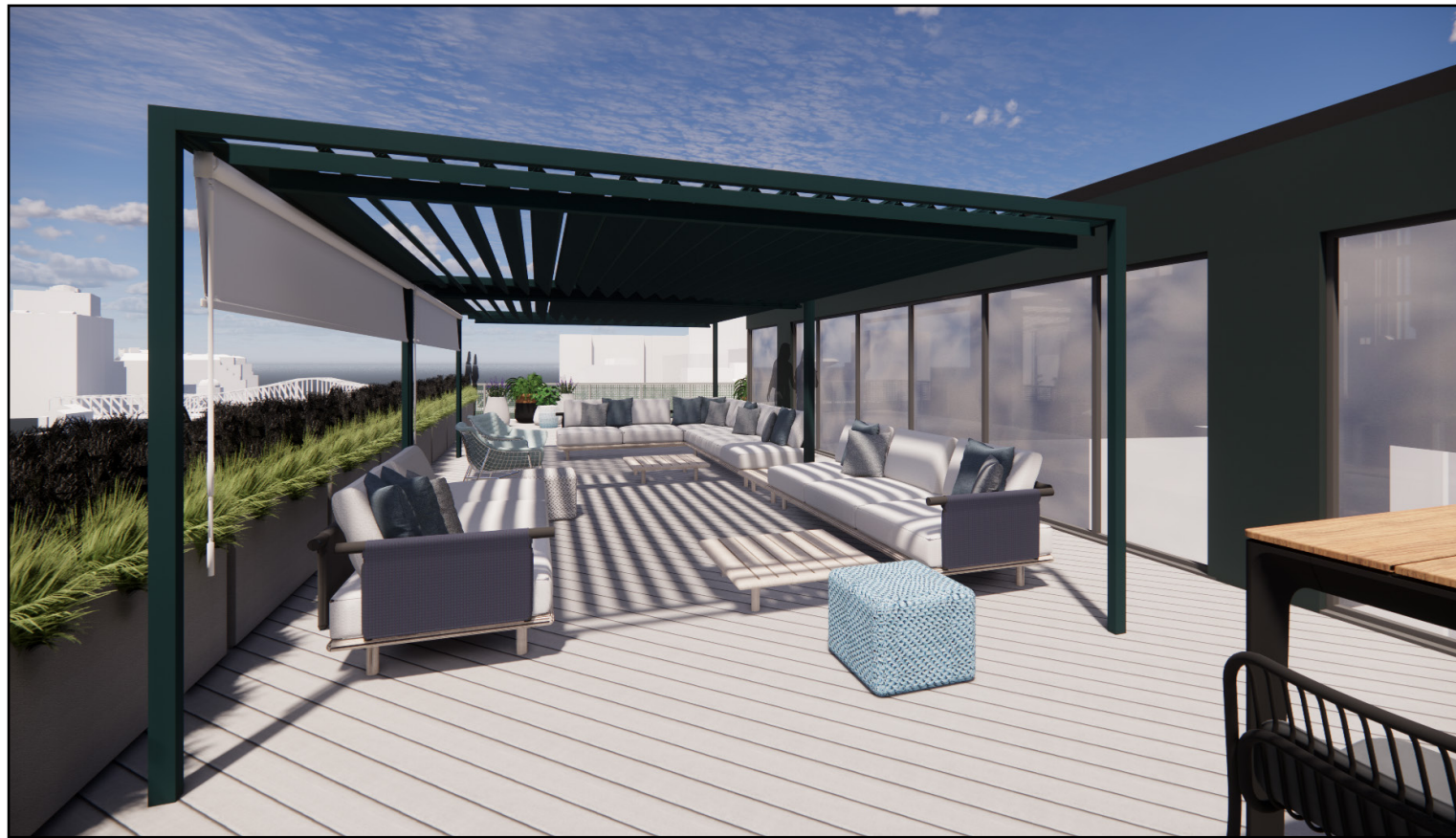
303 CONGRESS ST | DESIGN REVIEW APPLICATION | 2022.08.11

© 2019 HACIN ARCHITECTS LLC ALL RIGHTS RESERVED.



City of Boston
Landmarks Commission





RENDERINGS

303 CONGRESS ST | DESIGN REVIEW APPLICATION | 2022.08.11

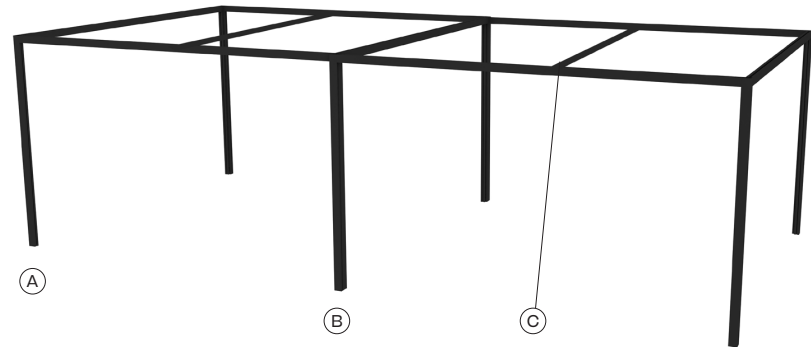
© 2019 HACIN ARCHITECTS LLC ALL RIGHTS RESERVED.



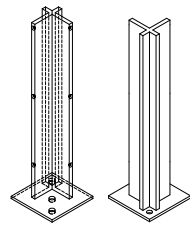
City of Boston
Landmarks Commission



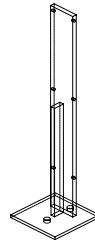
Anchoring system



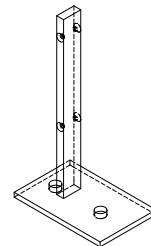
(A) Corner column anchoring footer



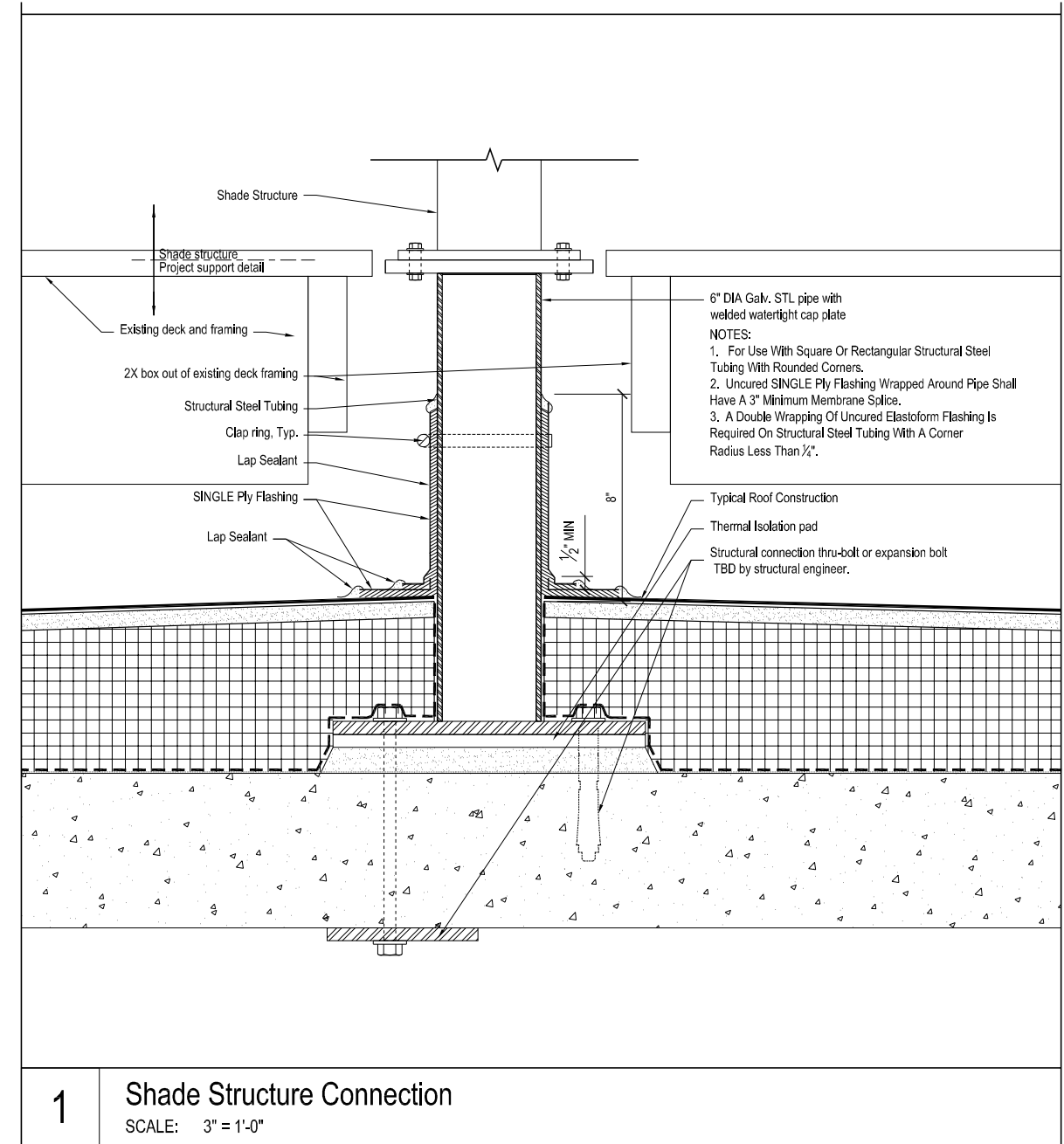
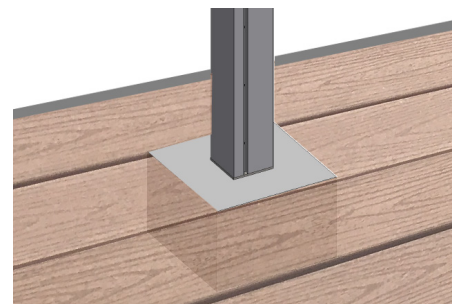
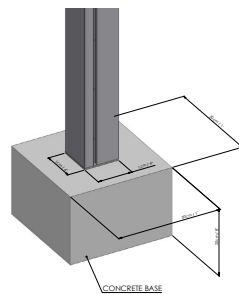
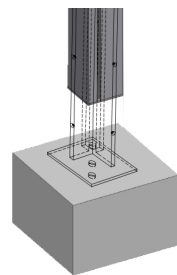
(A) T Double pavilion anchoring footer



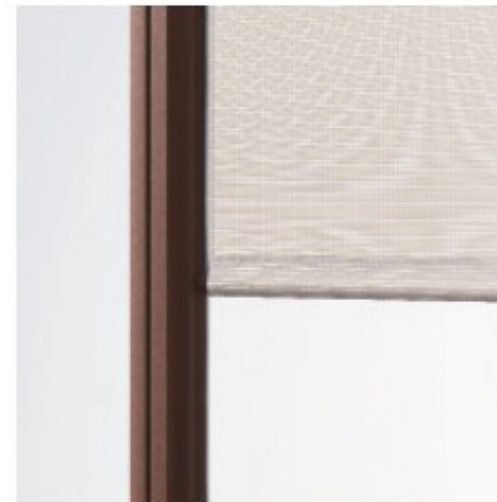
(A) Auxiliary column anchoring footer



Concrete pilon requirements



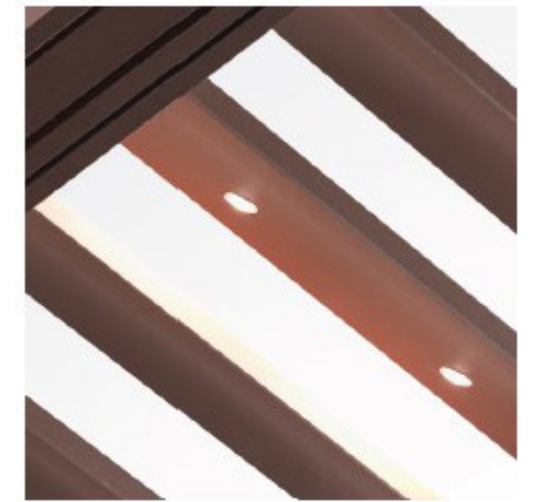
1 Shade Structure Connection
SCALE: 3" = 1'-0"



Rolling blind



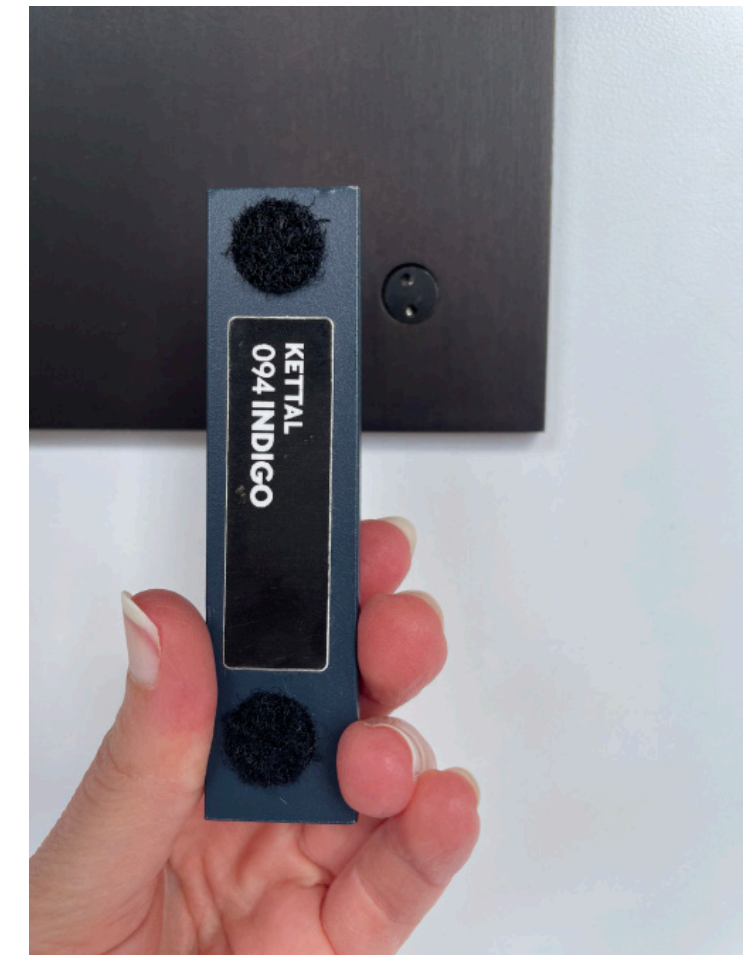
Blouclimatic electric ceiling



Blouclimatic electric ceiling with mini dots



Black and white background for contrast only

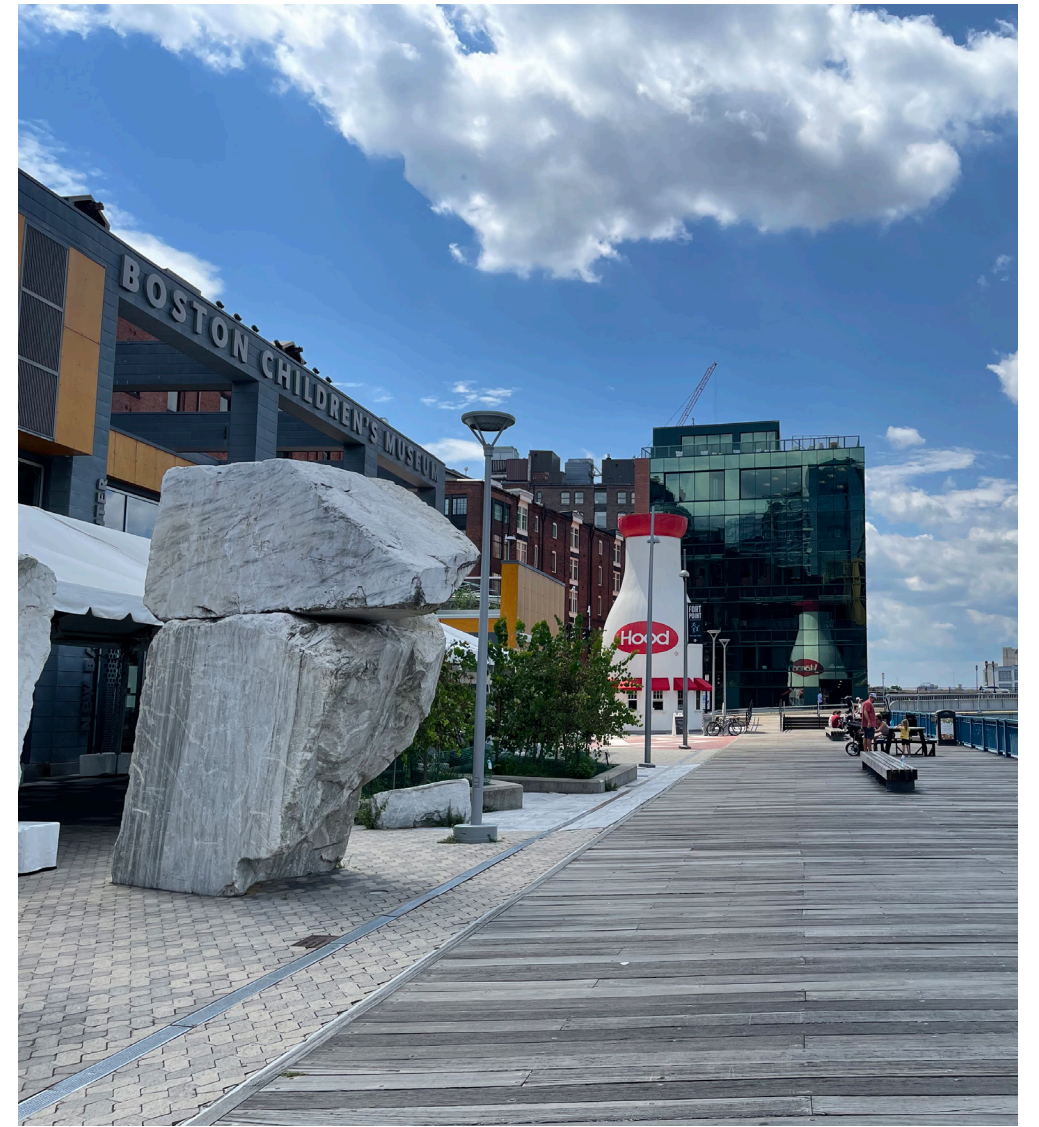


COLOR AND MATERIALS

303 CONGRESS ST | DESIGN REVIEW APPLICATION | 2022.08.11

© 2019 HACIN ARCHITECTS LLC ALL RIGHTS RESERVED.





PHOTOS OF MOCKUP - ACCROSS CONGRESS ST

303 CONGRESS ST | DESIGN REVIEW APPLICATION | 2022.08.11

© 2019 HACIN ARCHITECTS LLC ALL RIGHTS RESERVED.





PHOTOS OF MOCKUP - FROM BRIDGE

303 CONGRESS ST | DESIGN REVIEW APPLICATION | 2022.08.11

© 2019 HACIN ARCHITECTS LLC ALL RIGHTS RESERVED.





PHOTO OF MOCKUP - ACCROSS CHANNEL

303 CONGRESS ST | DESIGN REVIEW APPLICATION | 2022.08.11

© 2019 HACIN ARCHITECTS LLC ALL RIGHTS RESERVED.

