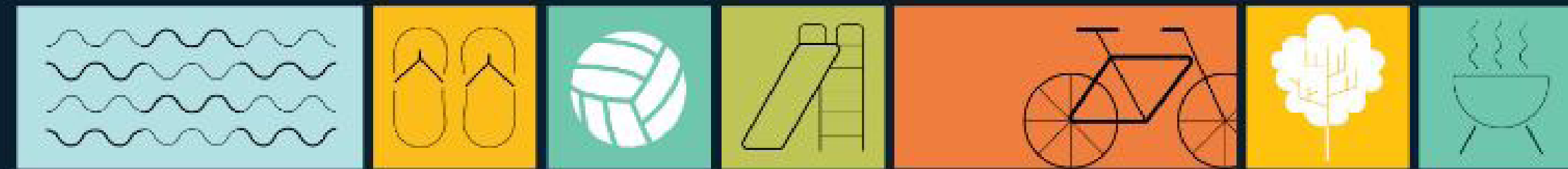


MOAKLEY PARK

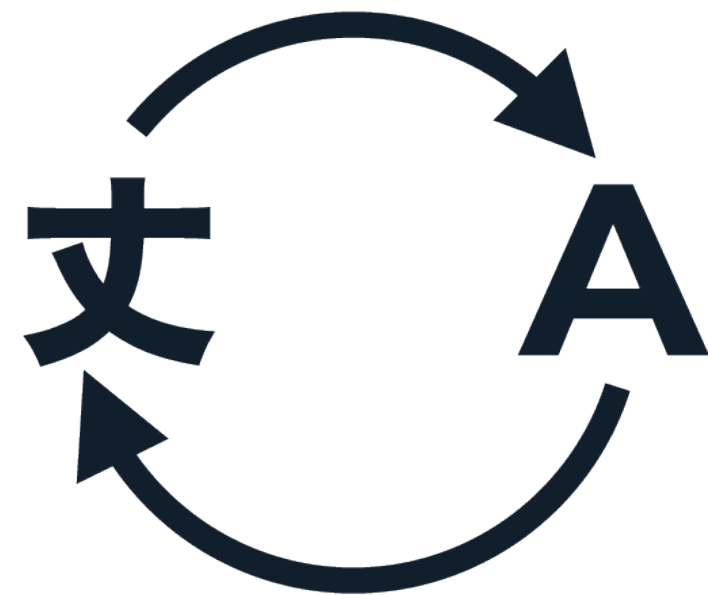


Public Meeting
July 20th, 2022



City of Boston
Parks and Recreation
Mayor Michelle Wu

INTERPRETATION AND TRANSLATION



Everyone deserves to have meaningful access to the information and services they need. As part of our outreach efforts, the City of Boston provides interpretation and translation services upon request.

For future translation or interpretation services please email allison.perlman@boston.gov

MEETING RECORDING



The Boston Parks and Recreation Department will be recording the meeting and posting to our project webpage for those who are unable to attend the Zoom meeting live.

It is possible that participants may also be recording the meeting with their phones cameras or other devices. If you do not wish to be recorded during this meeting, please keep your microphone and camera off.

VIRTUAL MEETING ETIQUETTE

We want to ensure this conversation is a pleasant experience for all and that all community members/ stakeholders are comfortable sharing their comments, questions and feedback.

Please be respectful and mindful of each other's time when asking questions/ providing comments, so that all attendees are able to participate in the meeting.

Keep questions/ comments project-specific and not personal to yield solution-driven discussion.

Please wait until all attendees have had the opportunity to ask a question/ provide a comment before providing additional questions/ comments.

You can always set up a conversation with **Allison Perlman**, Allison.perlman@boston.gov to further discuss the project or process.

ZOOM TIPS

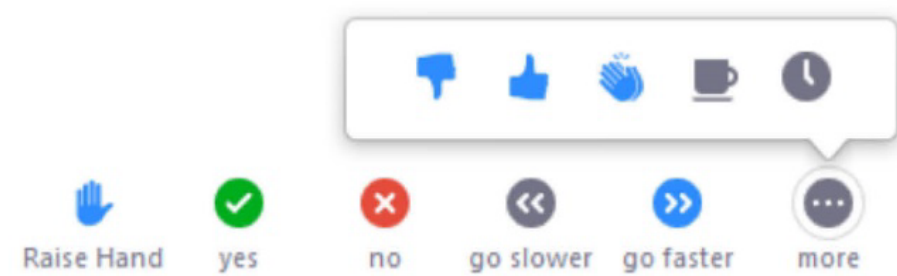
Here is how you can participate during the question and answer part of the presentation.

DURING THE PRESENTATION:



VIA WEB:

Turn video on / off.



To use these non-verbal options click on participants (bottom of screen); these options will pop up in side bar.

DURING THE Q&A:



JOINING VIA PHONE?

Use *9 to raise hand to ask for audio / video permission to ask questions or provide comments.



VIA WEB:

Chat to ask questions / comments or provide responses to poll questions



Raise hand to ask for audio / video permission to ask questions or provide comments.

AGENDA

INTRODUCTIONS

- PROJECT TEAM
- PROJECT OVERVIEW
- COMMUNITY ENGAGEMENT: MARCH - AUGUST 2022
- OVERLOOK & COASTAL LANDSCAPE
- PREMIERE MULTI-USE FIELD
- COMMUNITY PLAZA
- NEXT STEPS

PROJECT TEAM

INTRODUCTIONS



ALLISON PERLMAN

BOSTON PARKS AND RECREATION



RYAN WOODS

BOSTON PARKS AND RECREATION



LIZA MEYER

BOSTON PARKS AND RECREATION



CHRISTINE BRANDAO

BOSTON PARKS AND RECREATION



JENN MEAKEM

BOSTON HARBOR NOW



CHERI RUANE

WESTON & SAMPSON



JOHNATHAN LAW

WESTON & SAMPSON



CHRIS REED

STOSS LANDSCAPE URBANISM



ALYSOUN WRIGHT

STOSS LANDSCAPE URBANISM

WHY MOAKLEY?

EXISTING PARK



OVERALL PROJECT

OVERALL SCHEMATIC DESIGN



STOSS

Weston & Sampson



City of Boston
Parks and Recreation
Mayor Michelle Wu

PHASE 1 DESIGN

OVERALL SITE



FLOOD MANAGEMENT ALIGNMENT

PARKING

COMMUNITY PLAZA

PREMIERE MULTI-USE FIELD

OLD COLONY HOUSING

O+M BUILDING + RESTROOMS

OLD HARBOR OVERLOOK / BBQ + PICNIC

COASTAL LANDSCAPE + NATURE PATHS

CARSON BEACH

DAY BOULEVARD

PREBLE CIRCLE

OLD COLONY AVE

K-CIRCLE



City of Boston
Parks and Recreation
Mayor Michelle Wu

EARLY 2022 - AND CONTINUED ON-SITE WORK

CONTINUED ON-SITE WORK

- SOIL SAMPLING
- DATA COLLECTION OF EXISTING GROUNDWATER AND STORMWATER
- COASTAL, STORMWATER AND GROUNDWATER MODELING



ENVIRONMENTAL SOIL REMOVAL



GEOTECHNICAL DRILLING



GEOTECHNICAL TEST PIT



HYDROGEOLOGICAL DRILLING

COMMUNITY ENGAGEMENT AND EARLY ACTION ITEMS

OVERVIEW MARCH -AUGUST 2022

COMMUNITY ENGAGEMENT EVENTS:

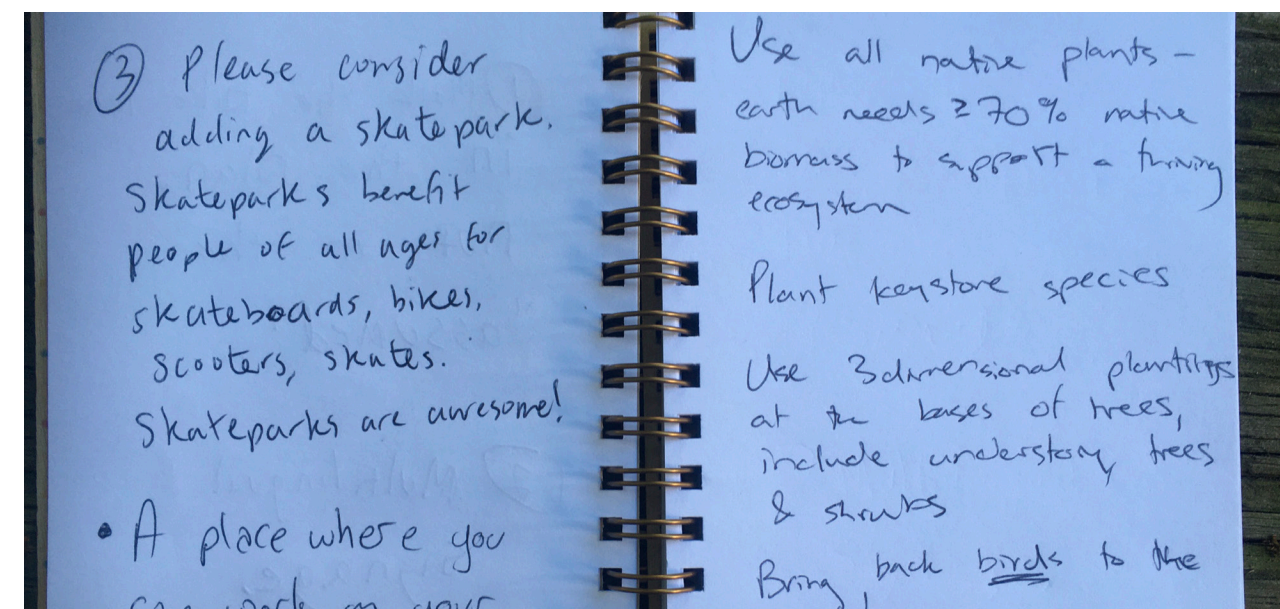
- BIOBUS ENGAGEMENT - APRIL 30TH - MAY 1ST 2022
- ON-LINE SURVEY - MAY - JUNE 2022
- BOSTON CYCLIST UNION PRIDE RIDE - JUNE 11, 2022
- CARSON BEACH TEEN BASH - JULY 1, 2022
- MARY ELLEN MCCORMACK SUMMER SIZZLER BASKETBALL TOURNAMENT - JULY 9, 2022
- COMMUNITY MEETING #2 - JULY 20, 2022
- MONTHLY PARK CLEAN-UPS - ONGOING

EARLY ACTION ITEMS:

- BASKETBALL RESURFACING AT MCDONOUGH FIELD HOUSE COURTS
- COMMUNITY GARDEN EXPANSION
- MONTHLY PARK CLEAN-UPS



urniture **seating** material **trees** area
als **Wood grass** element
will **stone** plants **feel grass boulders**



PHASE 1 SITE



COMMUNITY ENGAGEMENT

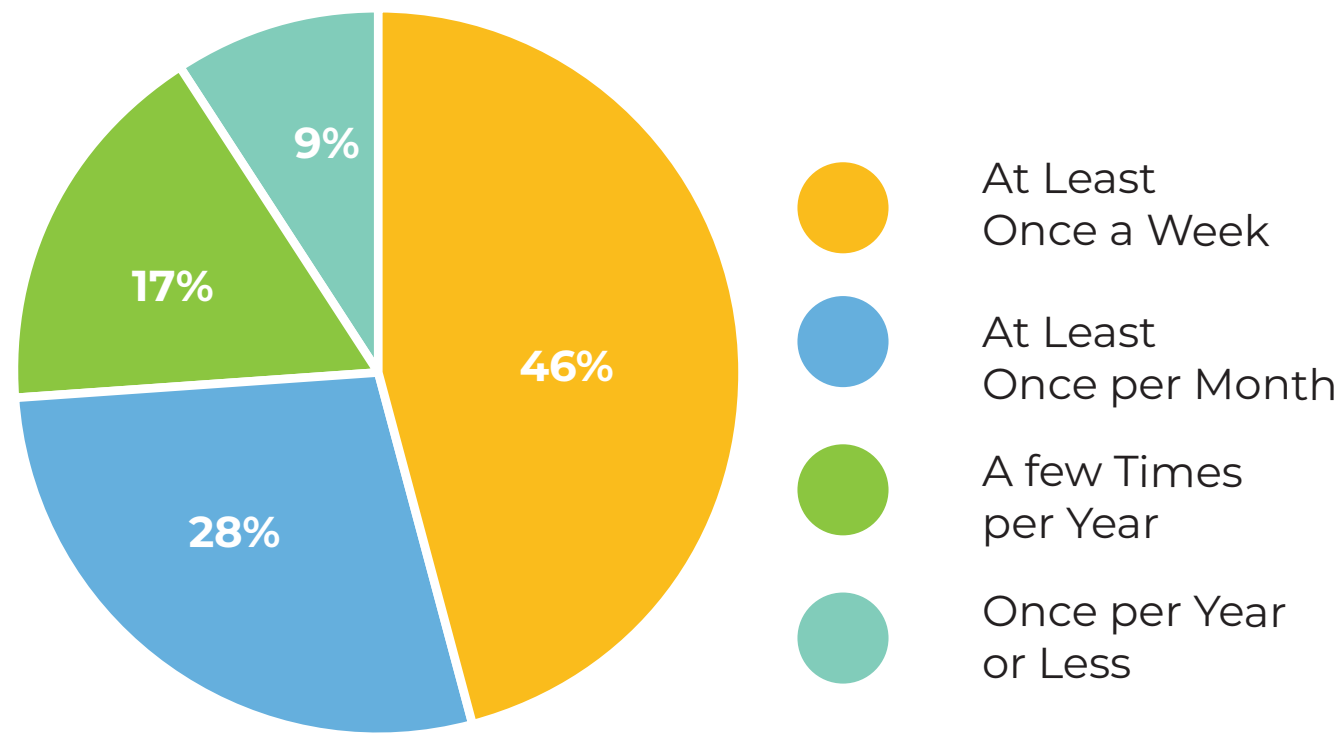
ONLINE SURVEY PARTICIPANTS

126 Responses

How do you get to the park?



How often do you use Moakley Park?



What do you do while you are at Moakley Park now?

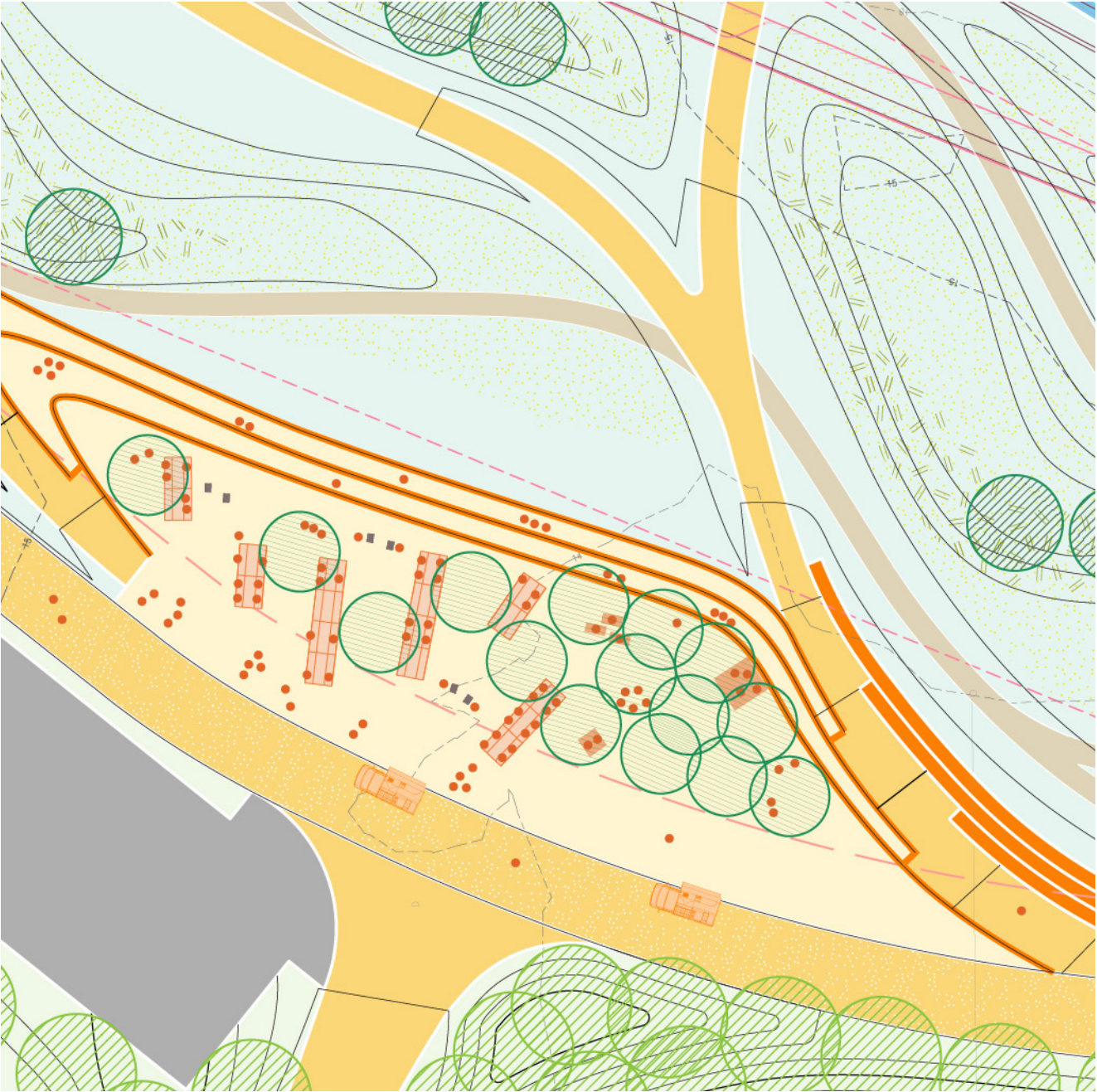


Participant Zip Code

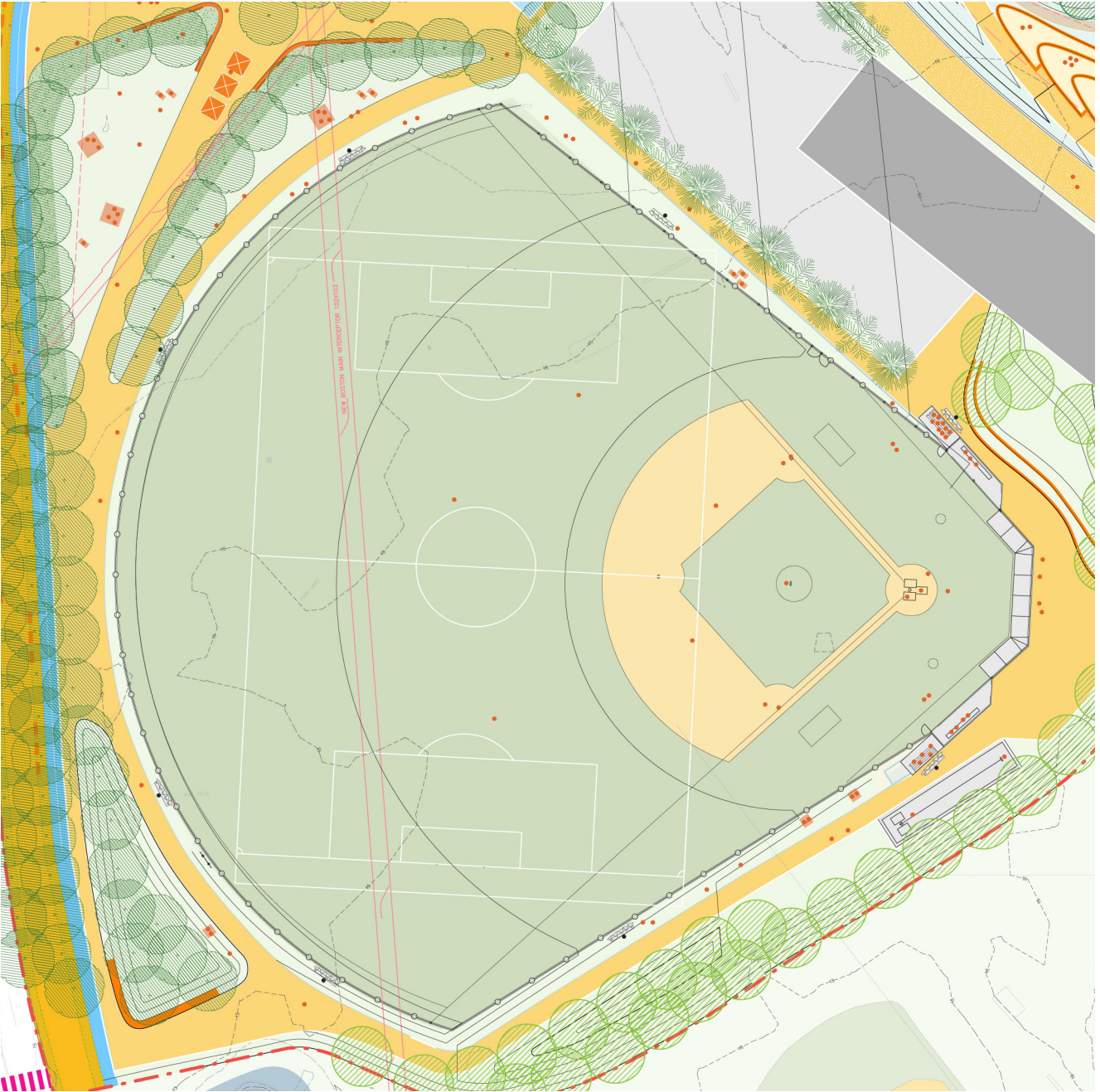


COMMUNITY ENGAGEMENT

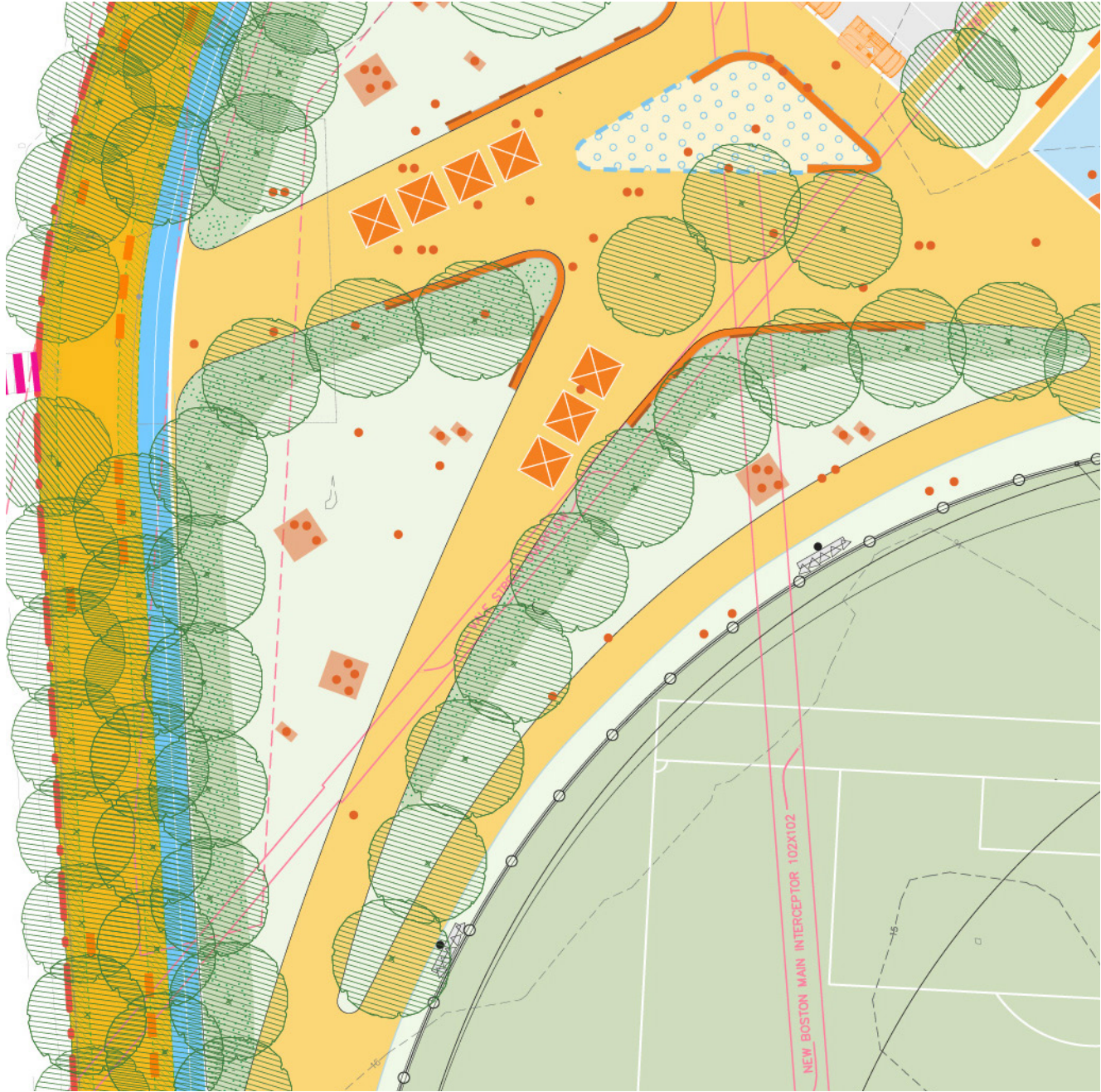
DESIGN RESPONSES



1. OVERLOOK & COASTAL LANDSCAPE



2. PREMIERE MULTI-USE FIELD

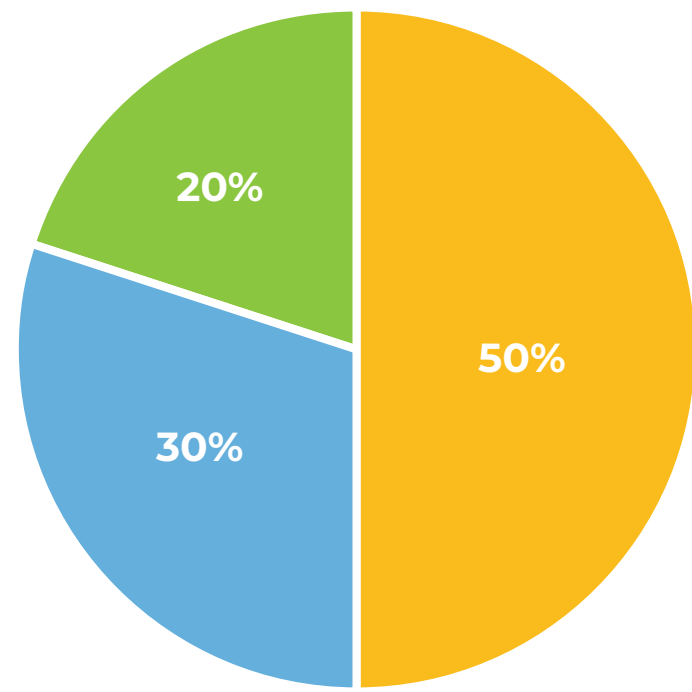


3. COMMUNITY PLAZA

OVERLOOK & COASTAL LANDSCAPE

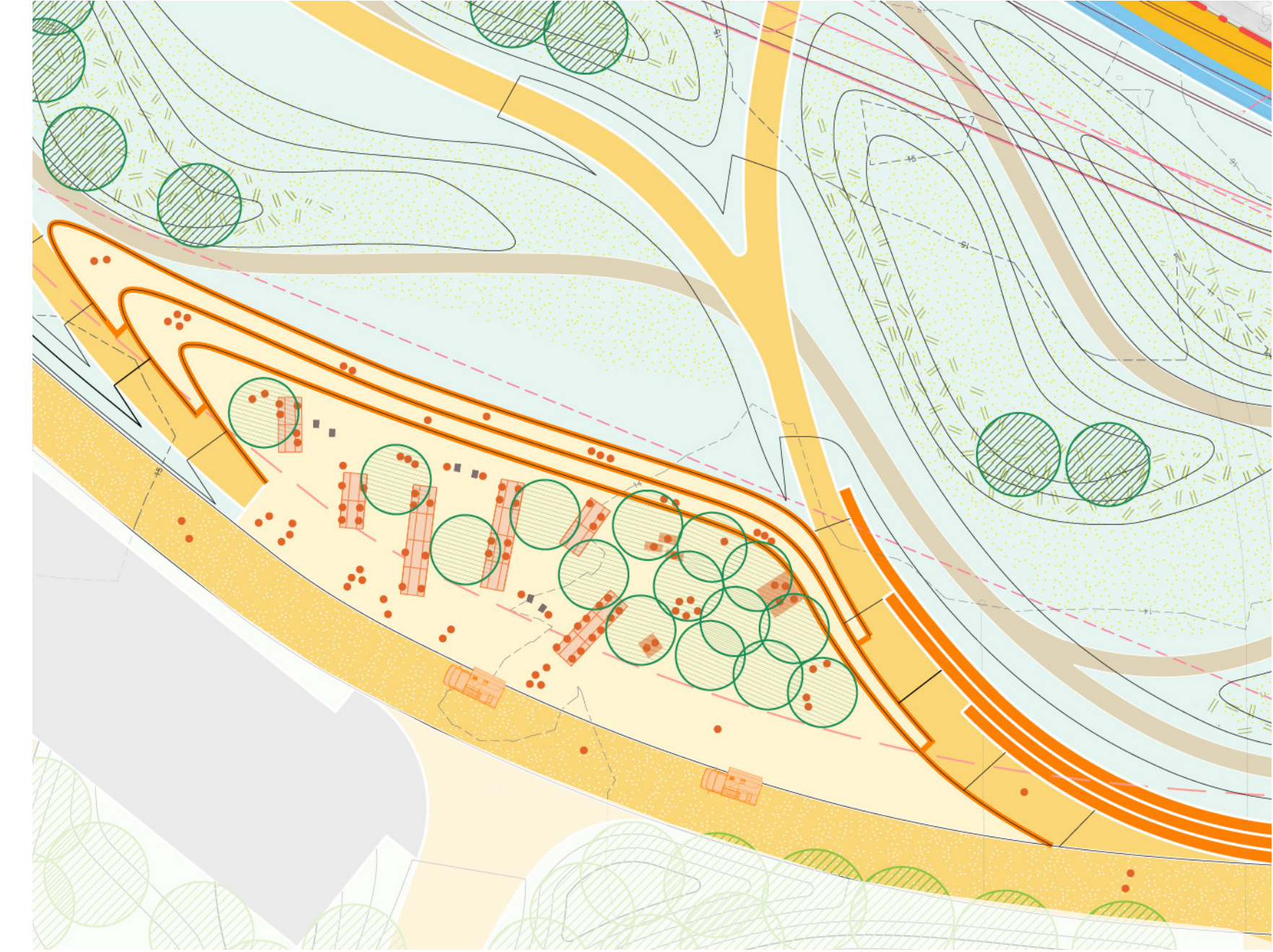
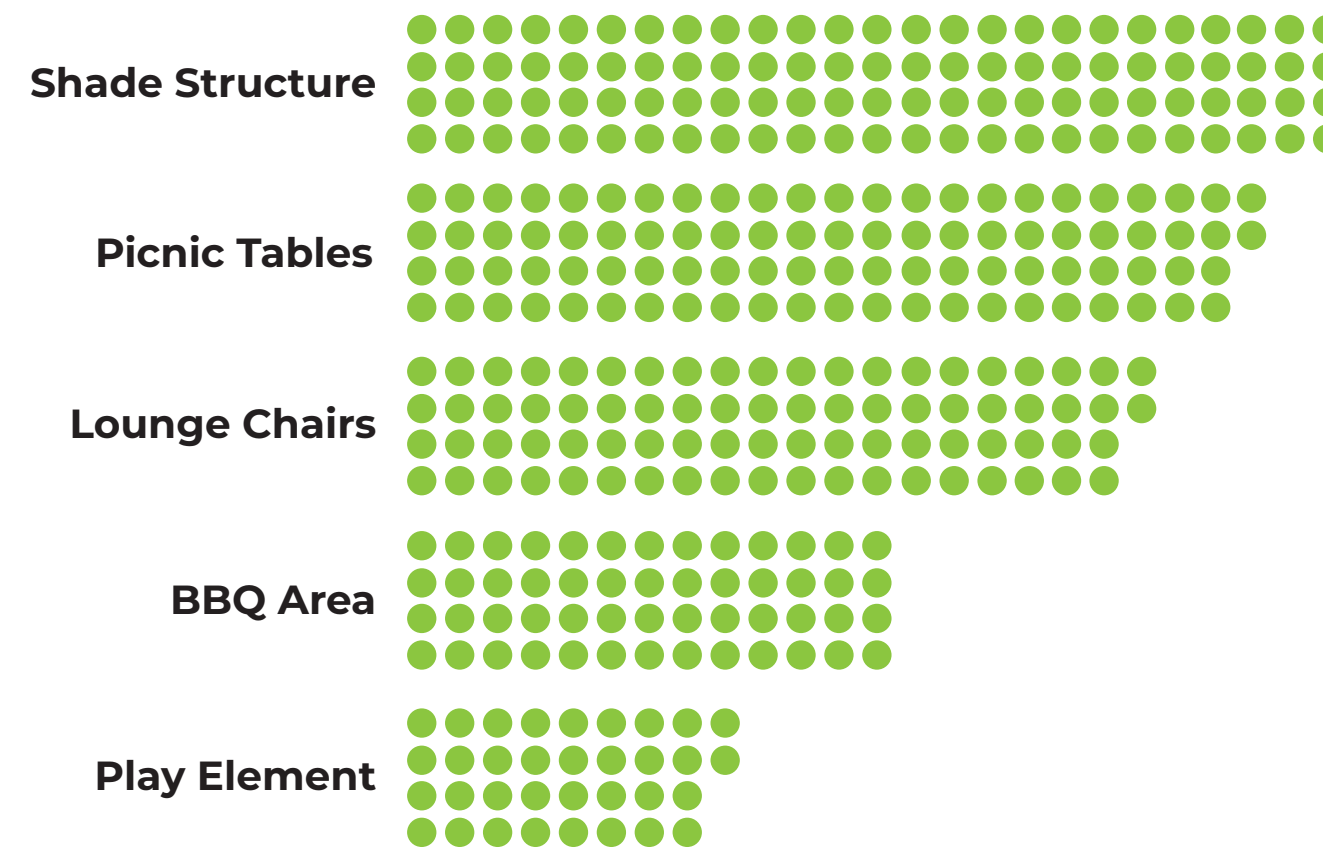
COMMUNITY ENGAGEMENT FEEDBACK

What type of experience are you interested in?

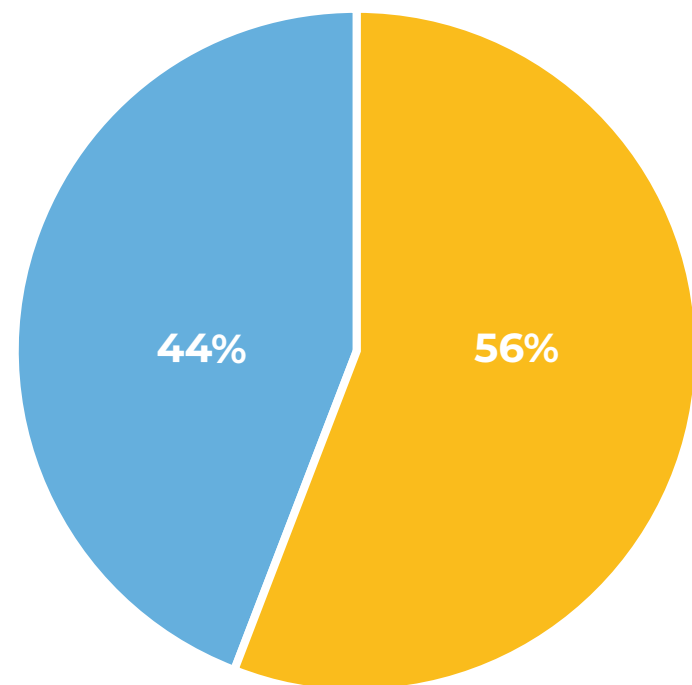


- Relaxing - a Place to Enjoy the View
- Communal - a Place for People from the Neighborhood to Gather and Celebrate / BBQ Area
- Active - a Place with Play Elements or Interactive Features

What type of features are you interested in?



How would you like to learn about the coastal landscape?



- Informational Signage
- Interactive Exhibits

What topics would you like to learn about?

- COASTAL ANIMALS
- CLIMATE SOLUTIONS
- COASTAL PLANTS
- WATERFRONT VIEWS
- SHADE STRUCTURE
- BBQ AREA

How do you want to chill?

OVERLOOK & COASTAL LANDSCAPE

PROPOSED PERSPECTIVE RENDERING



STOSS

Weston & SampsonSM



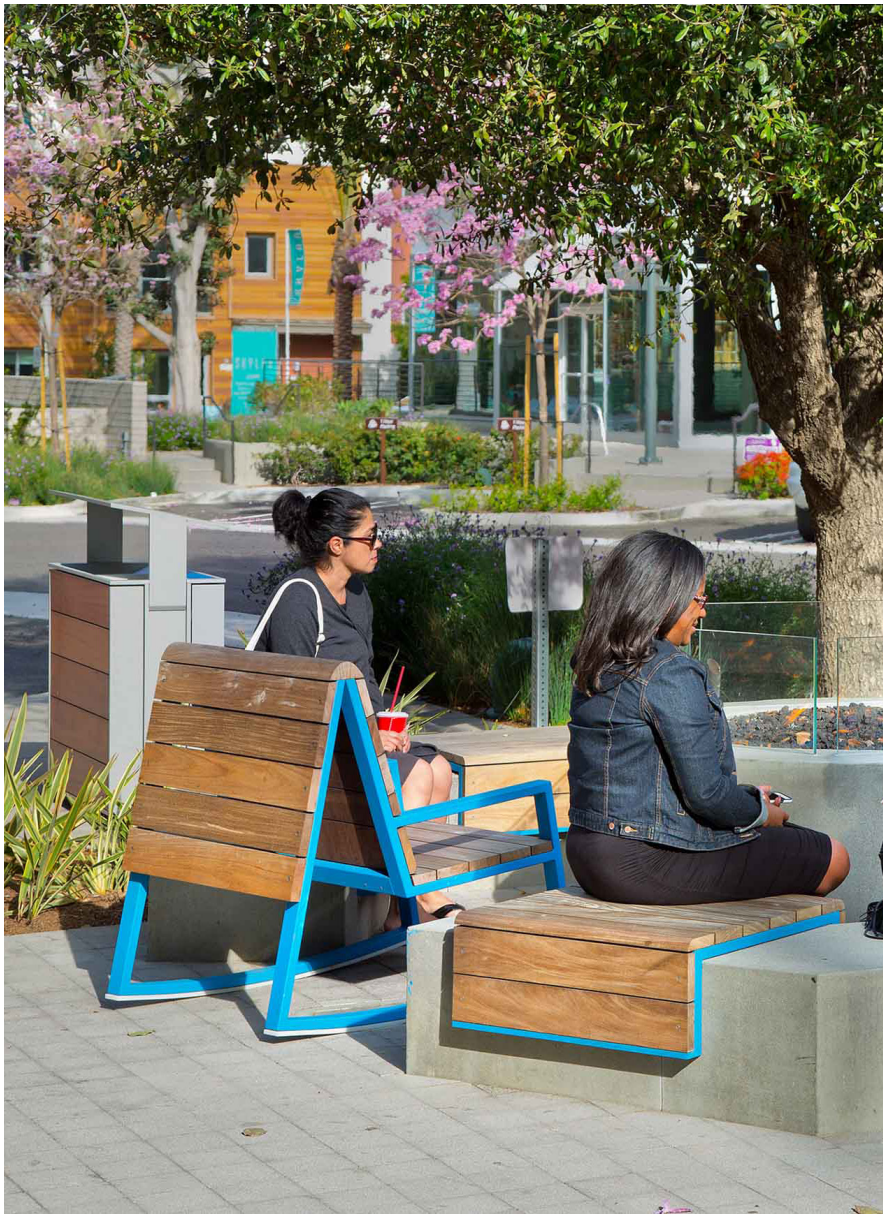
City of Boston
Parks and Recreation
Mayor Michelle Wu

OVERLOOK & COASTAL LANDSCAPE

PRECEDENT IMAGES



OVERLOOK SEATING



BENCHES



PICNIC TABLES



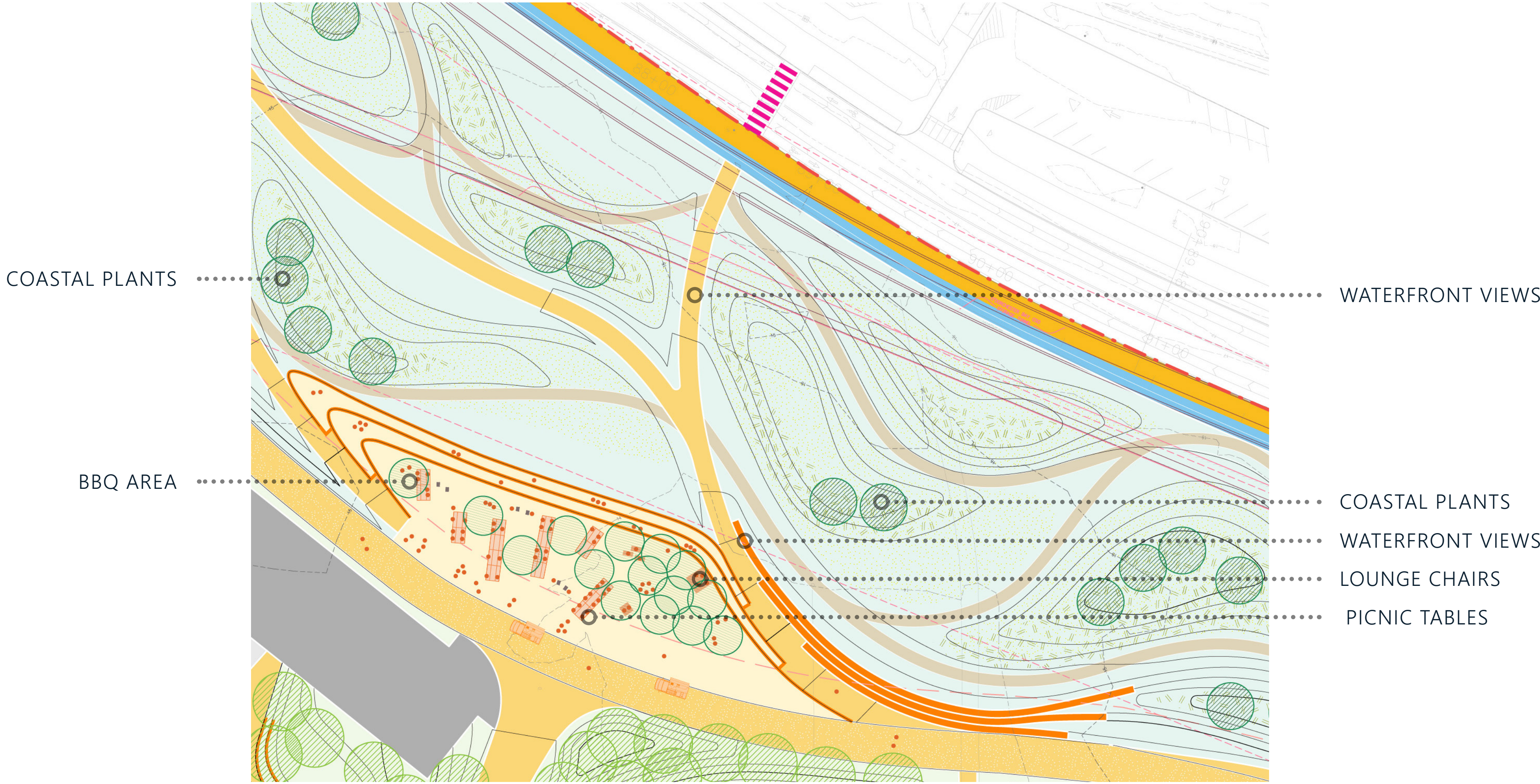
BBQ AREA



BIRD WATCHING

OVERLOOK & COASTAL LANDSCAPE

DESIGN RESPONSE

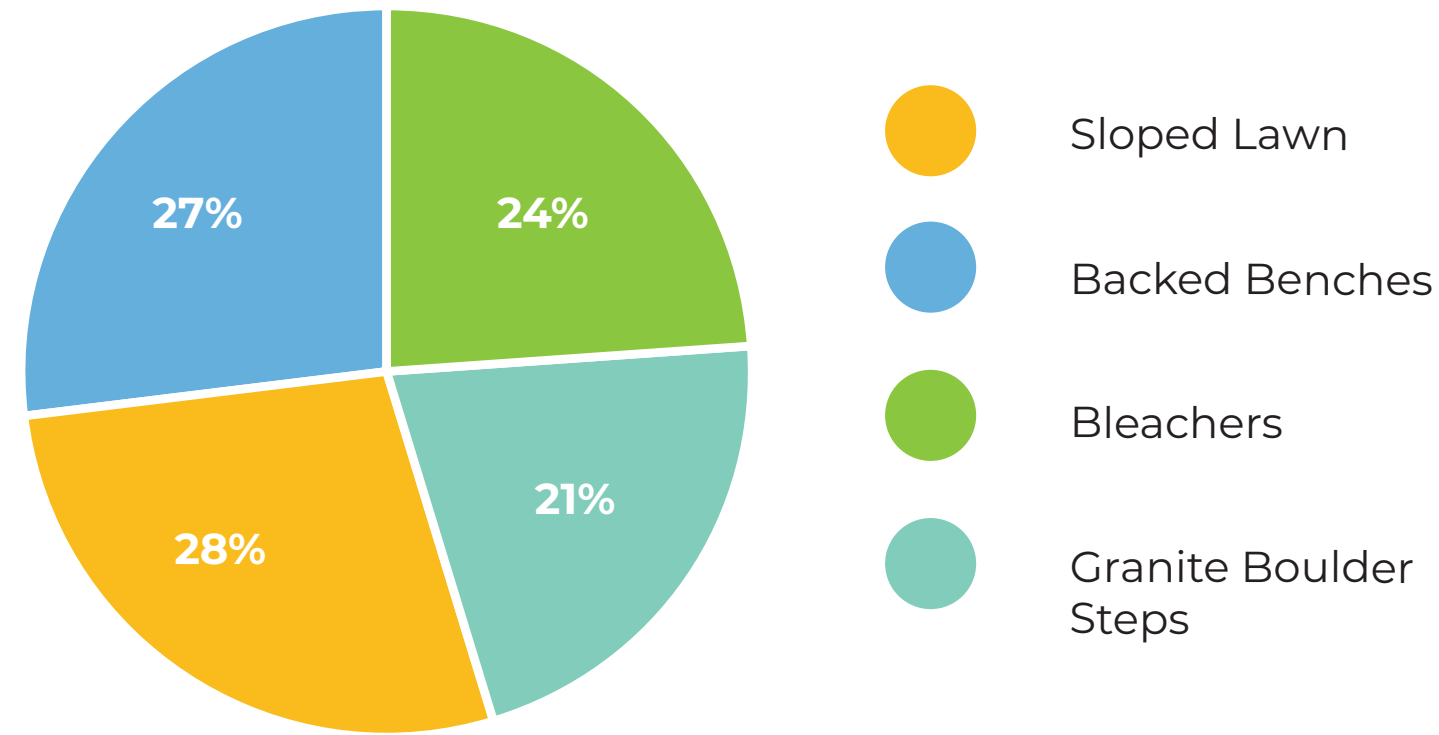


PREMIERE MULTI-USE FIELD

COMMUNITY ENGAGEMENT FEEDBACK

Baseball Field

What type of spectator seating would you prefer at the baseball field?

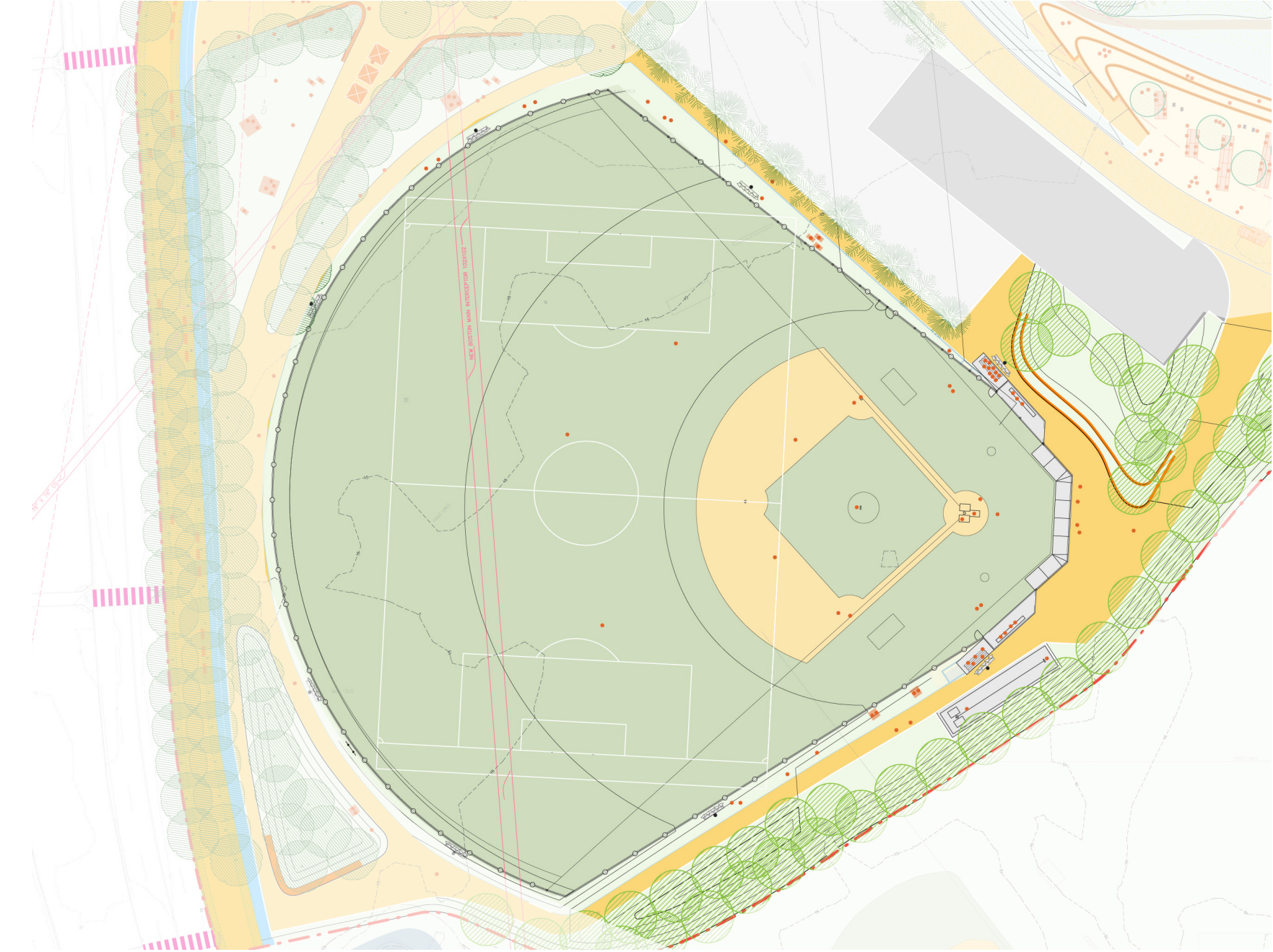


Connections to the neighborhood.

“Senior friendly where older folks can sit comfortably to watch their grandchildren play.”

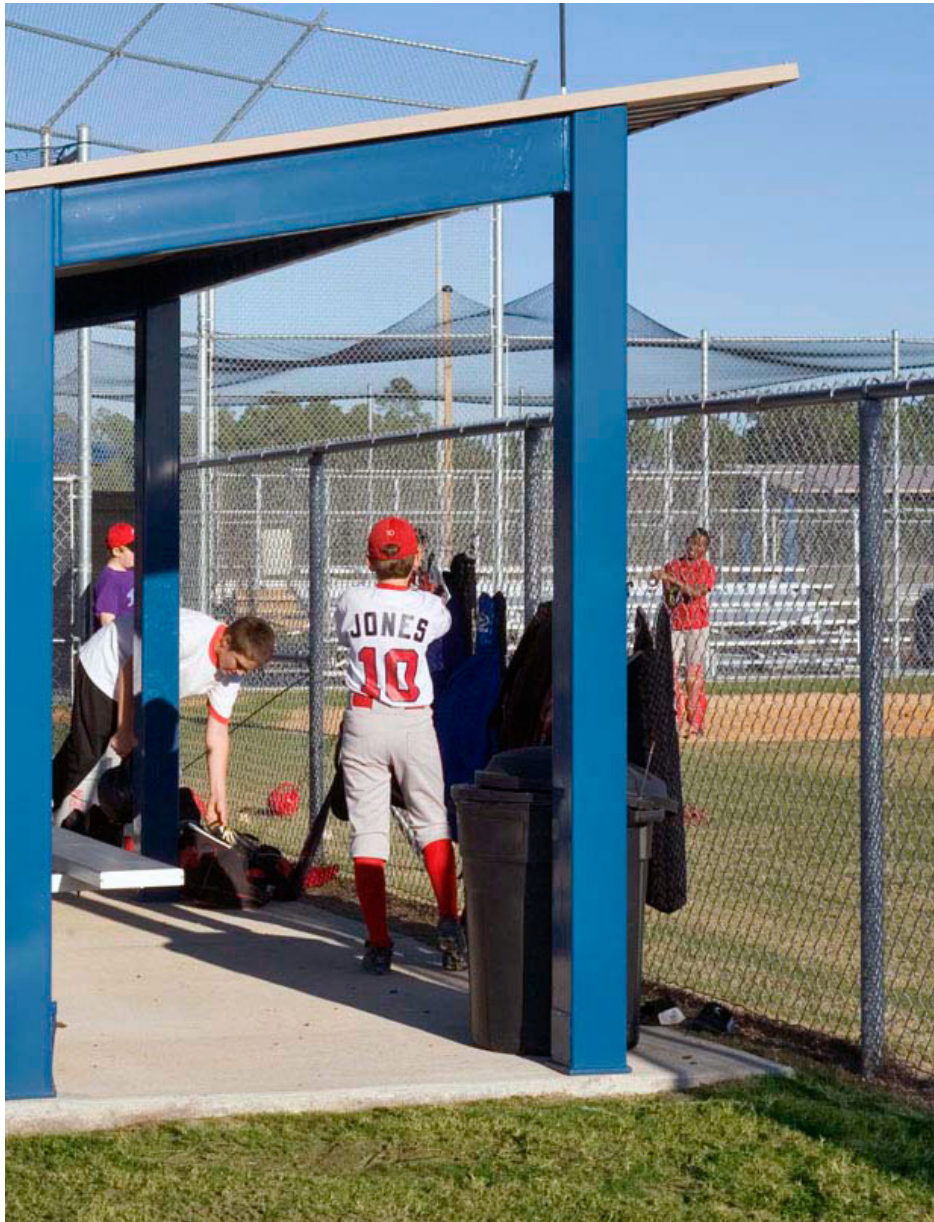
“Lighting for night games.”

“Safety from getting hit by a ball”

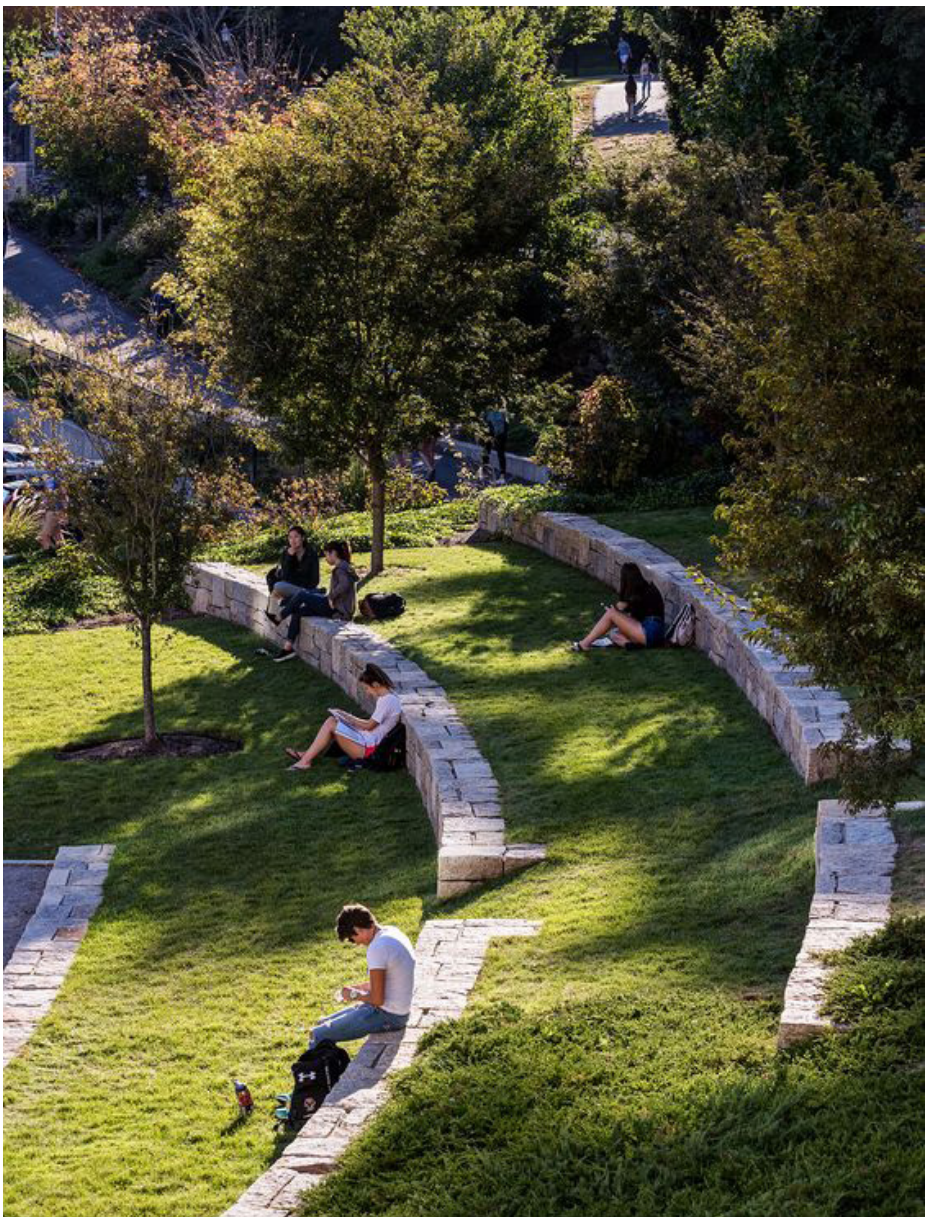


PREMIERE MULTI-USE FIELD

PRECEDENT IMAGES



DUGOUT + STADIUM SEATING



TERRACE SEATING



SEATWALL WITH BACK



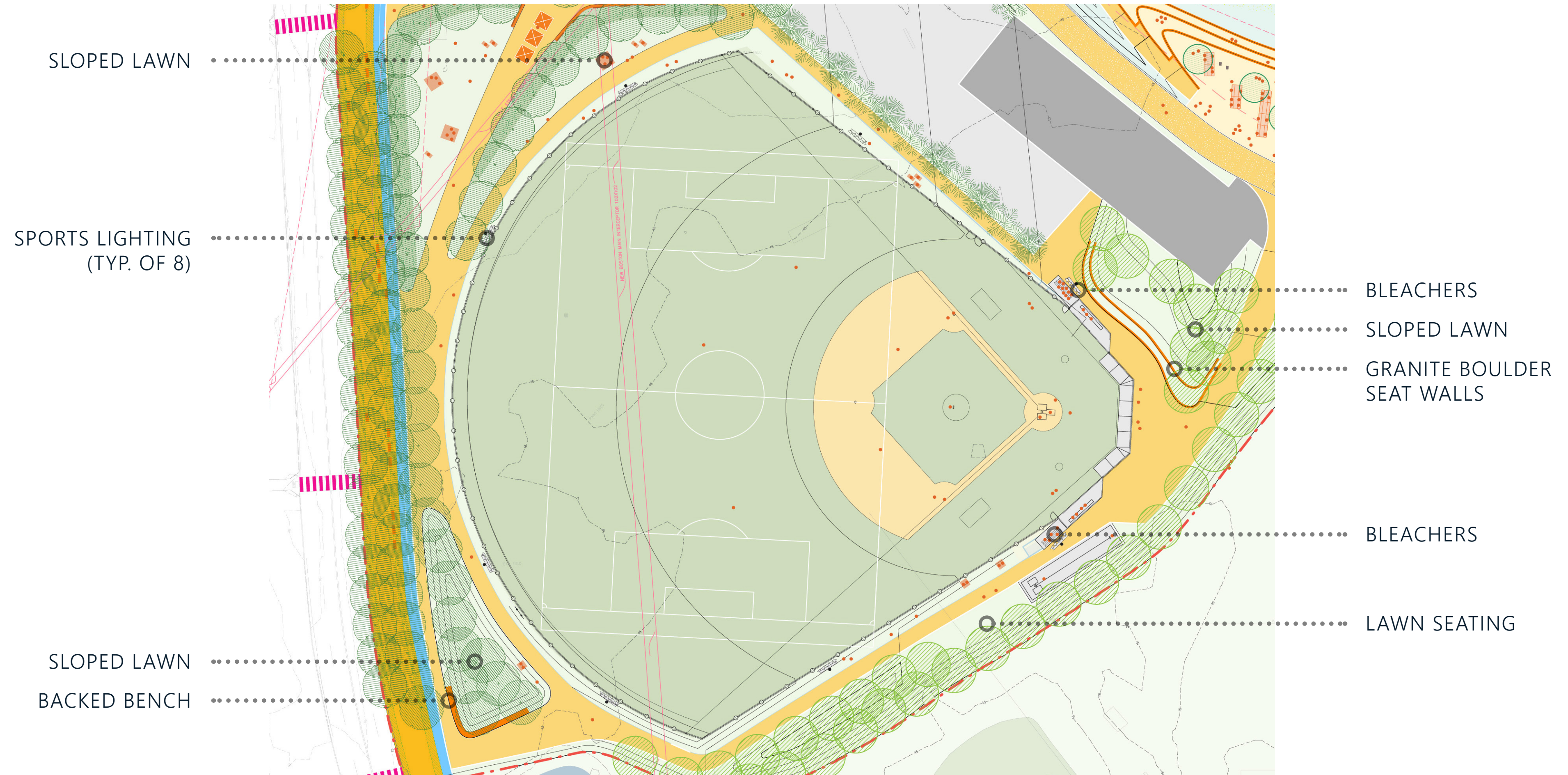
SLOPED LAWN



LAWN CHAIRS

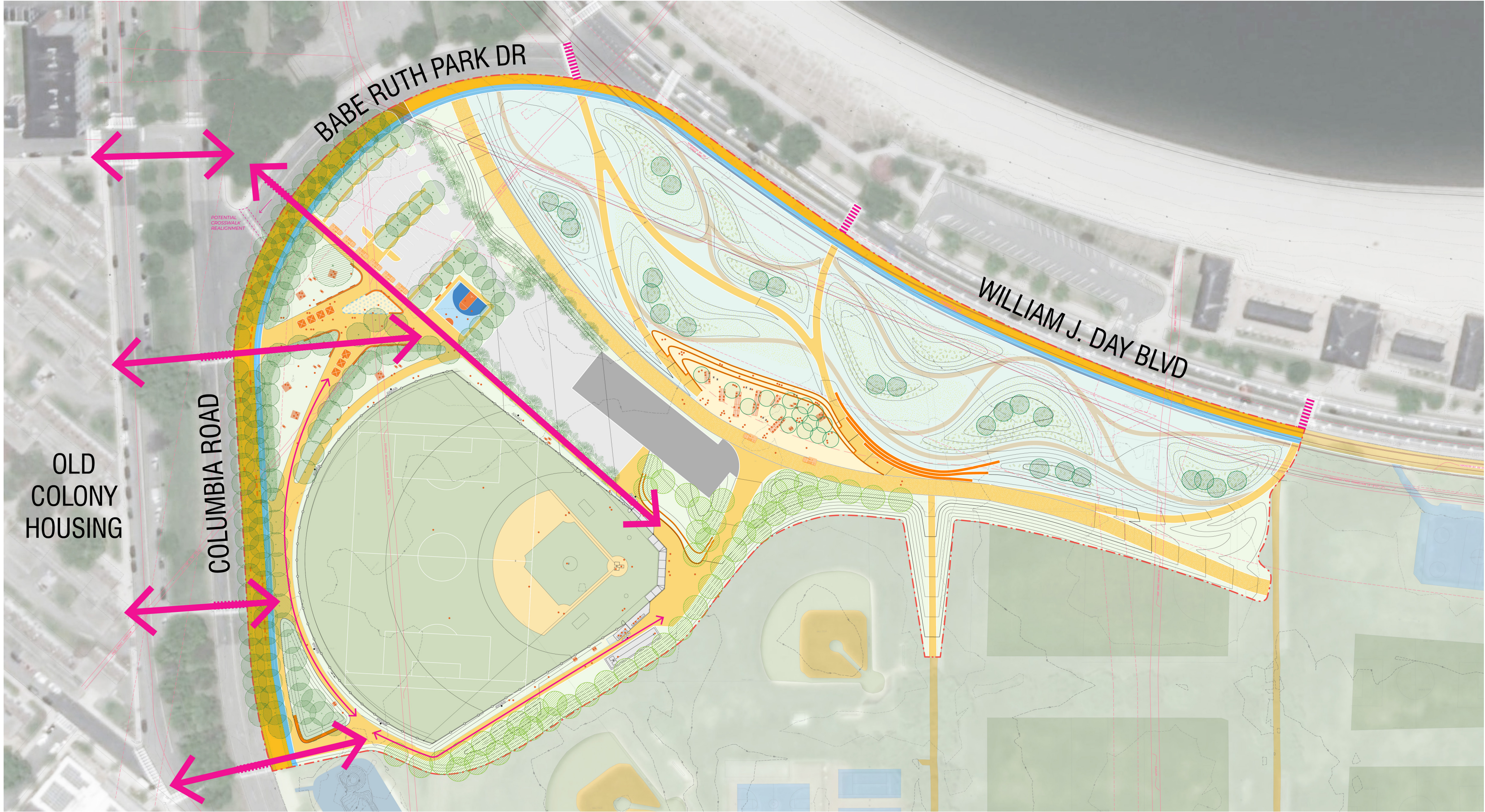
PREMIERE MULTI-USE FIELD

DESIGN RESPONSE



COMMUNITY PLAZA

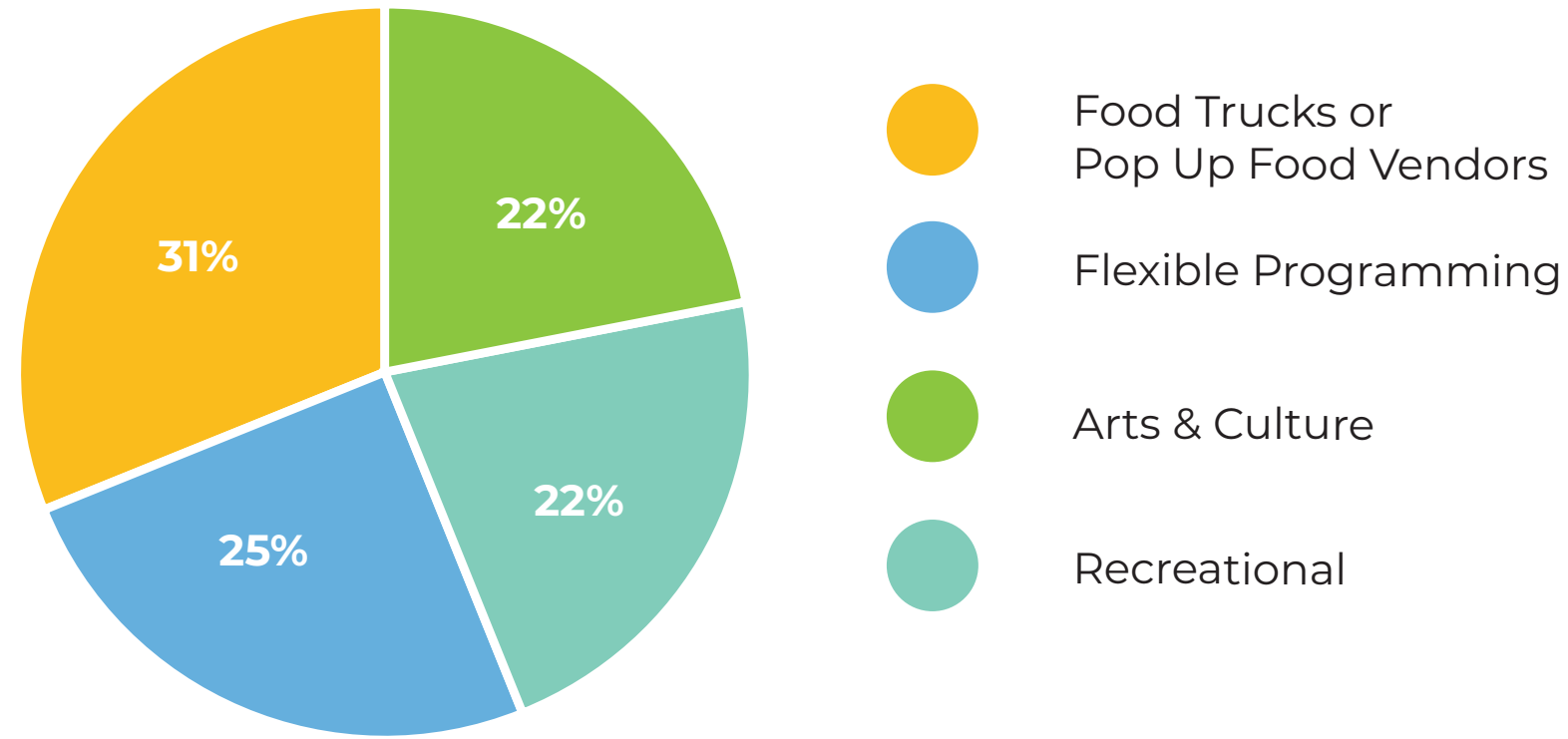
NEIGHBORHOOD ACCESS



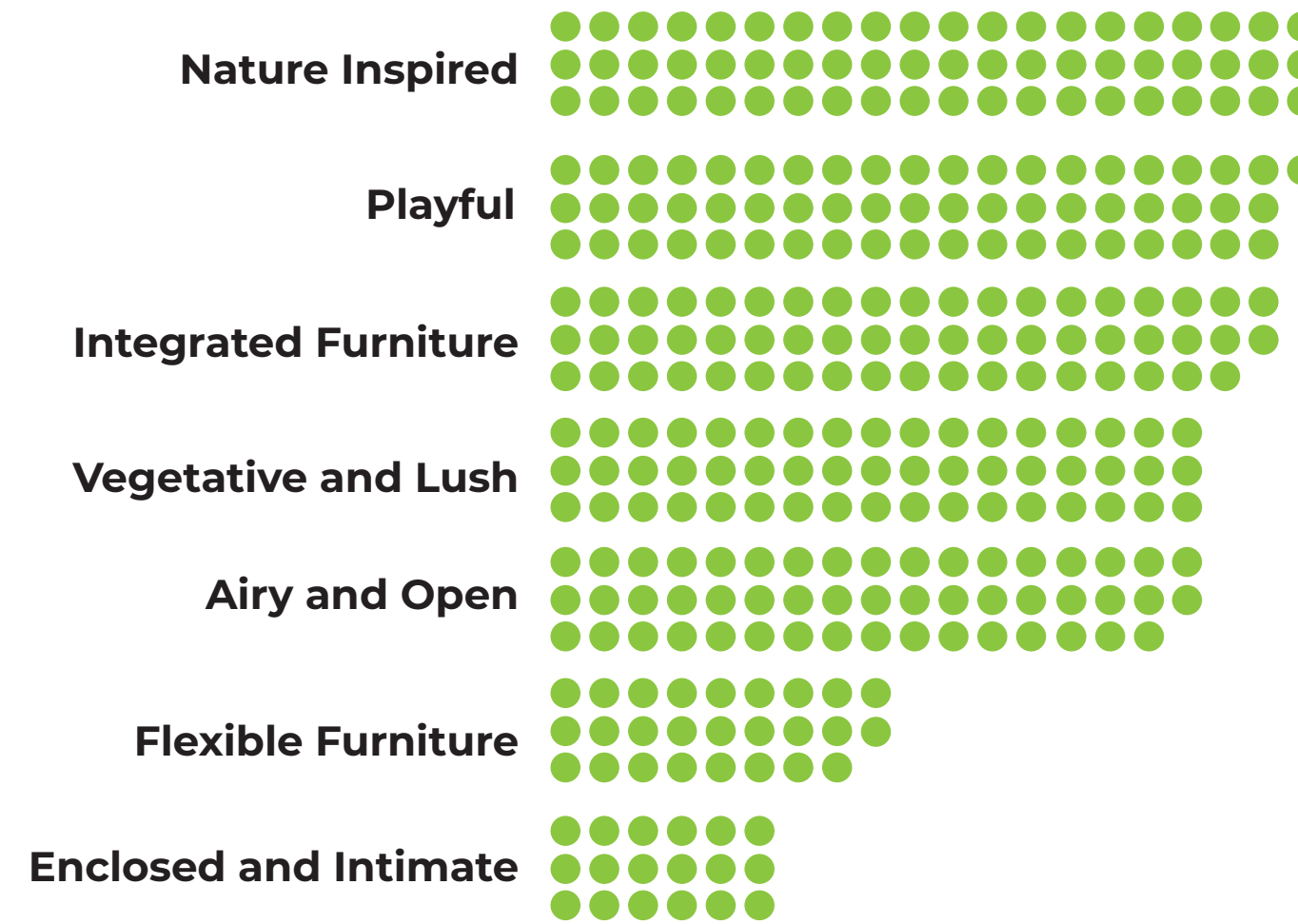
COMMUNITY PLAZA

COMMUNITY ENGAGEMENT FEEDBACK

What types of programming are you interested in?



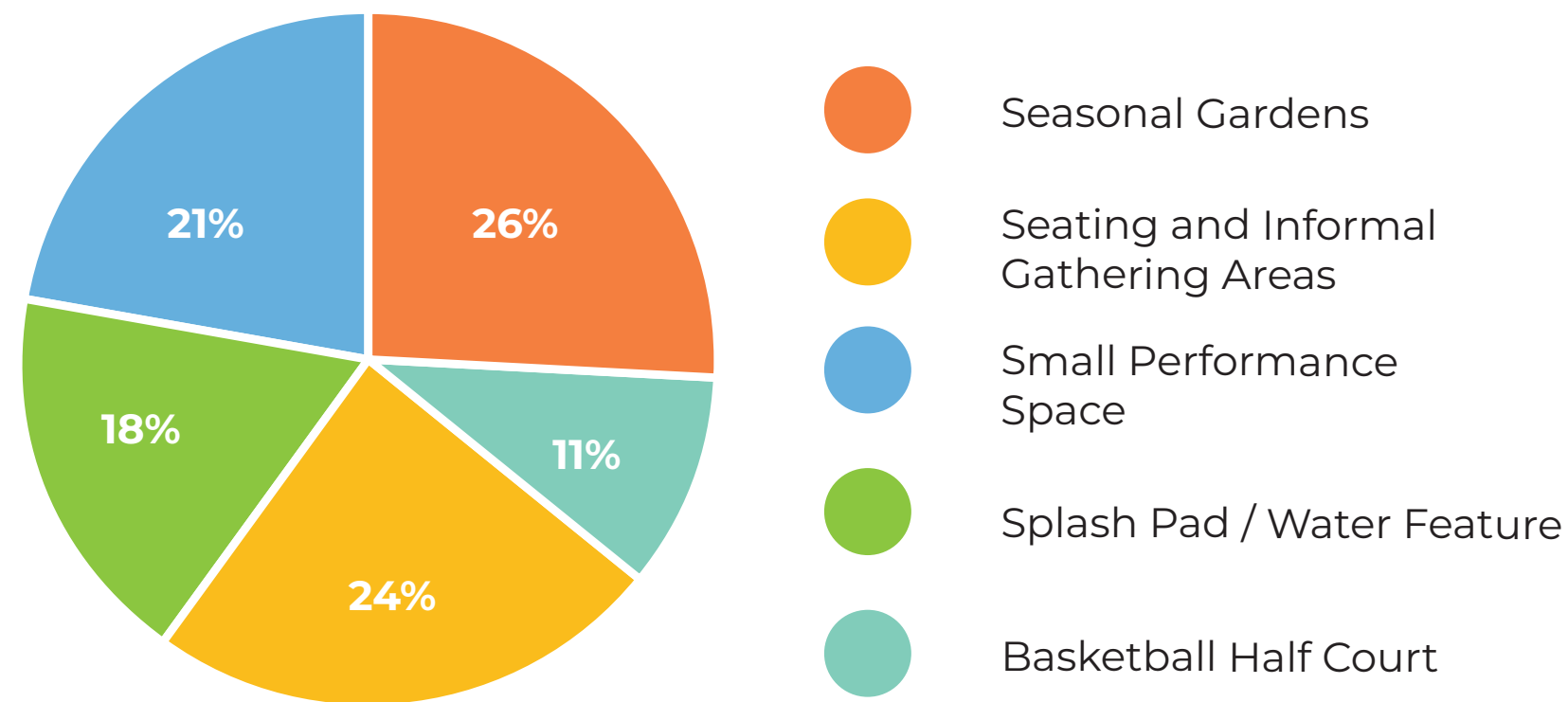
How would you like the community plaza to look and feel?



TOP COMMUNITY RESPONSES:

1. WHAT SPACES WOULD YOU LIKE TO SEE AT THE COMMUNITY PLAZA?

What type of features would you like to see in the community plaza?



“Ornamental grasses and native plantings that attract bees and butterflies.”

“Trees to cut down on the noise from playing fields and also to help with pollution.”



COMMUNITY PLAZA

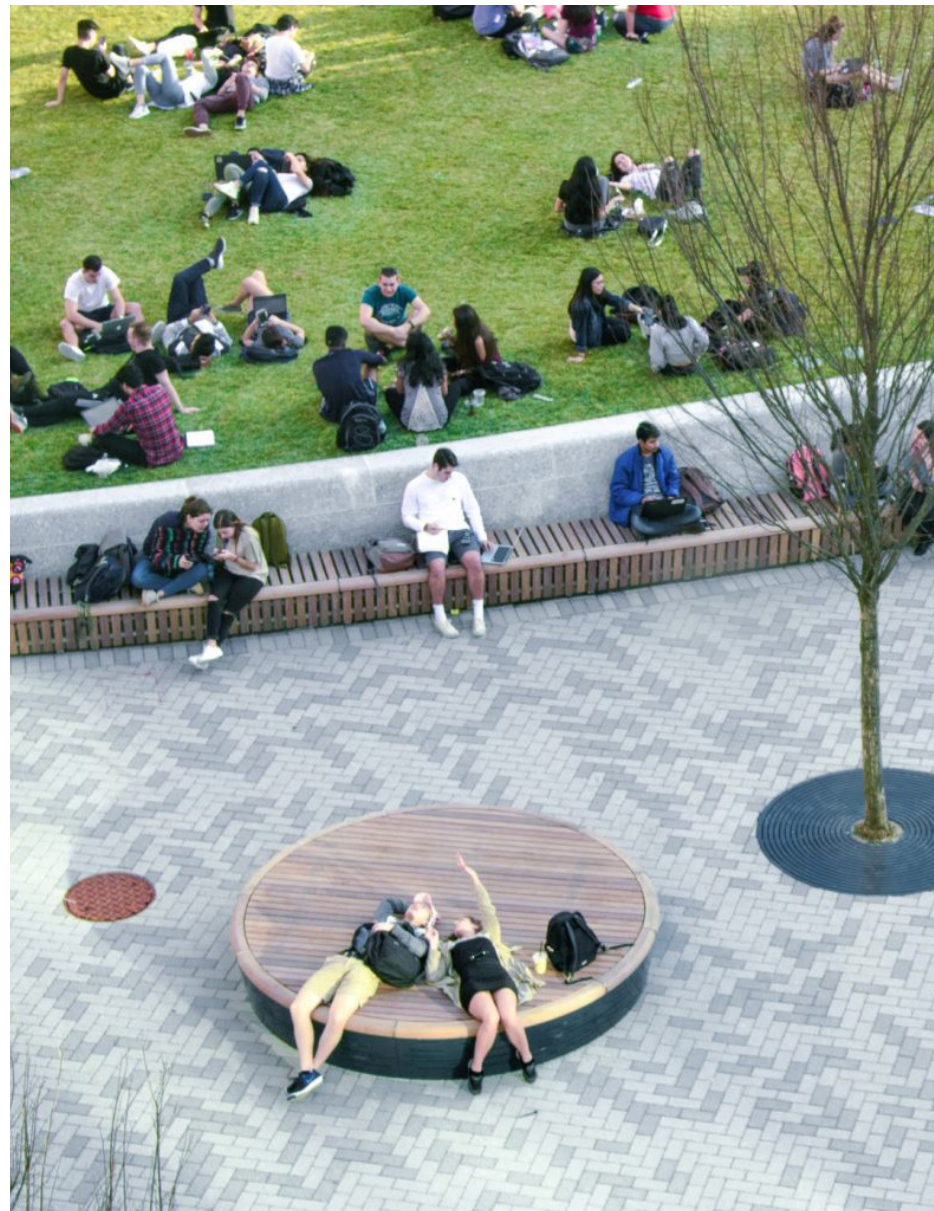
PRECEDENT IMAGES



PLAZA SPACE



OPEN LAWN



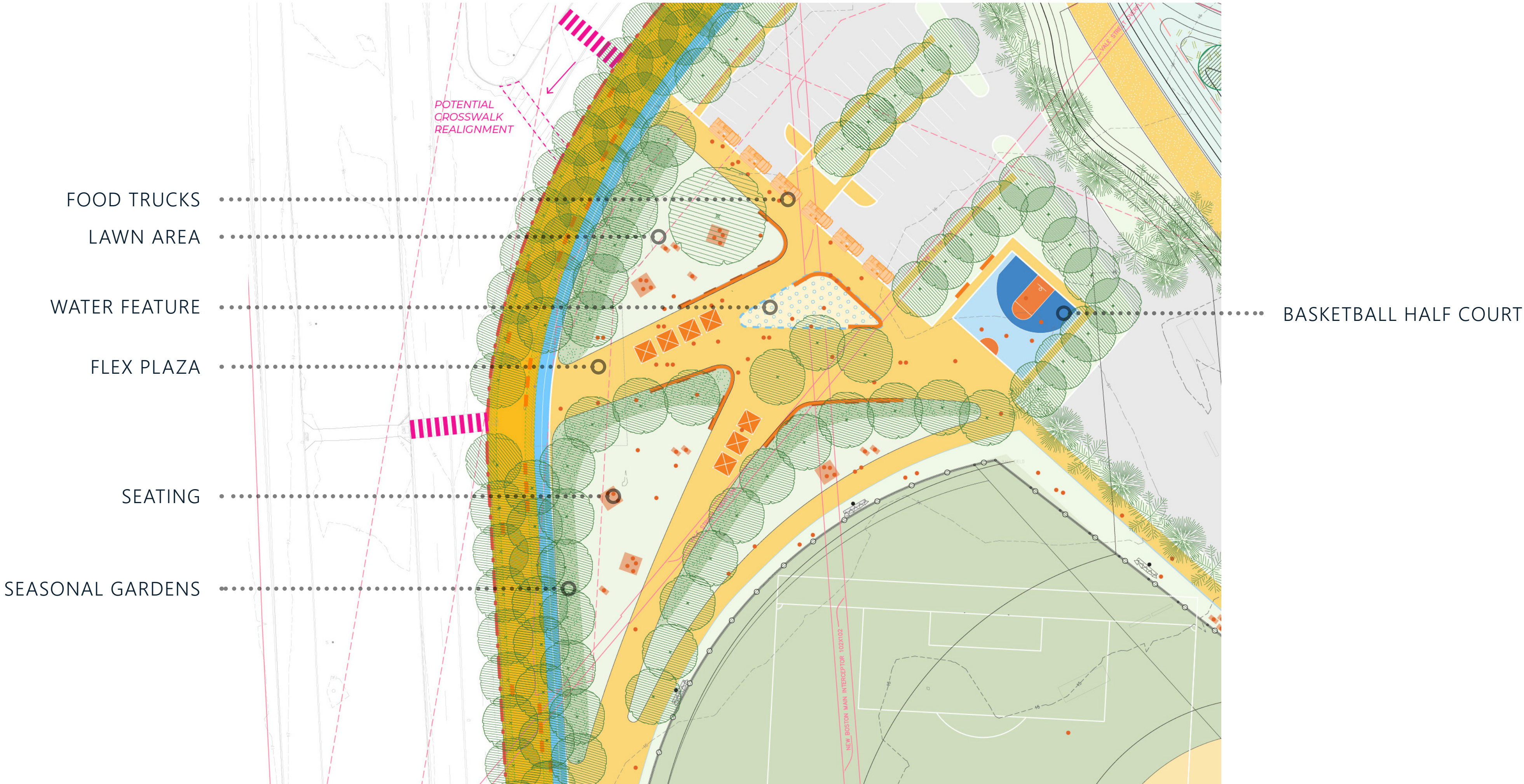
VARIED SEATING AREAS



GARDEN FEATURES

COMMUNITY PLAZA

DESIGN RESPONSE



COMMUNITY PLAZA DESIGN

OPTION 1: INCREASED LAWN SPACE

PLAZA SPACE



OPEN LAWN



SEATING AREAS



GARDEN FEATURES



COMMUNITY PLAZA DESIGN

OPTION 2: INCREASED GARDEN AND PLAZA SPACE

SEATING AREAS



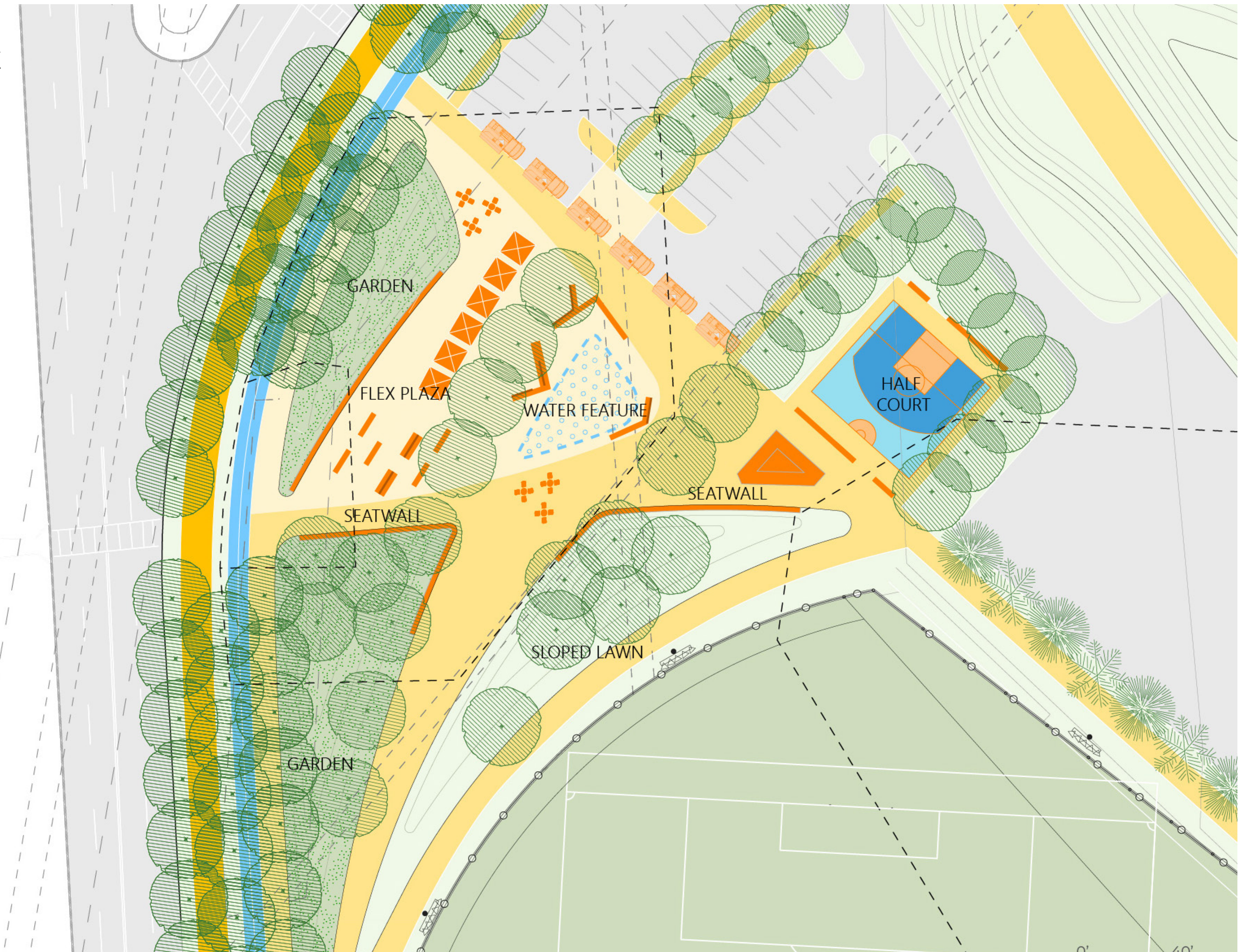
PLAZA SPACE



OPEN LAWN



GARDEN FEATURES



WATER FEATURE

PRECEDENT IMAGES



PLAZA WATER FEATURE



WATER FEATURE WITH
SPECIAL PAVING



NATURALISTIC WATER FEATURE



MISTING WATER FEATURE



ILLUMINATED WATER FEATURE

COMMUNITY PLAZA DESIGN

WHAT DO YOU LIKE FROM EACH DESIGN?

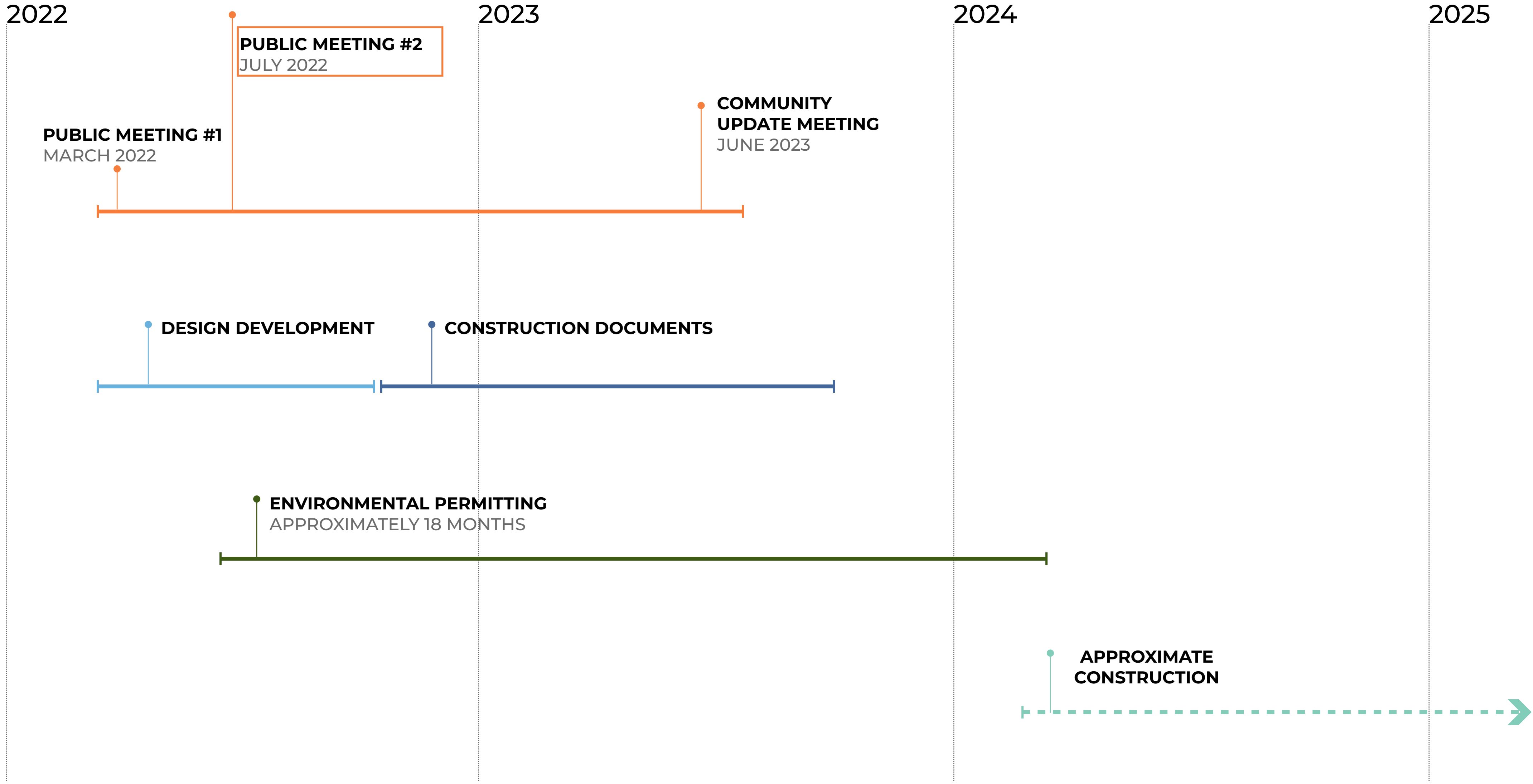


OPTION 1:
INCREASED LAWN SPACE



OPTION 2:
INCREASED GARDEN AND PLAZA SPACE

PROJECT TIMELINE



City of Boston
Parks and Recreation
Mayor Michelle Wu

NEXT STEPS AND ON-GOING PROGRAMS

2022 - 2024

NEXT STEPS:

- BORINGS AND SITE INSPECTIONS
- PERMITTING PROCESS/APPLICATIONS
- PHASE 1 CONSTRUCTION DOCUMENTS

ON-GOING PROGRAMMING WITH PARTNERS:

- MONTHLY PARK CLEAN-UPS: [THIRD SATURDAY, JULY - SEPTEMBER](#)
- MOVIE NIGHT: [AUGUST 30, 2022](#)
- FALL BULB PLANTING: [OCTOBER 22, 2022](#)

Visit our website for more information: www.boston.gov/parks/moakley-park



City of Boston
Parks and Recreation
Mayor Michelle Wu



*Design and Construction Project Manager
Boston Parks and Recreation*

allison.perlman@boston.gov

*Please feel free to reach out by email if you have
any questions or thoughts you want to share.*

