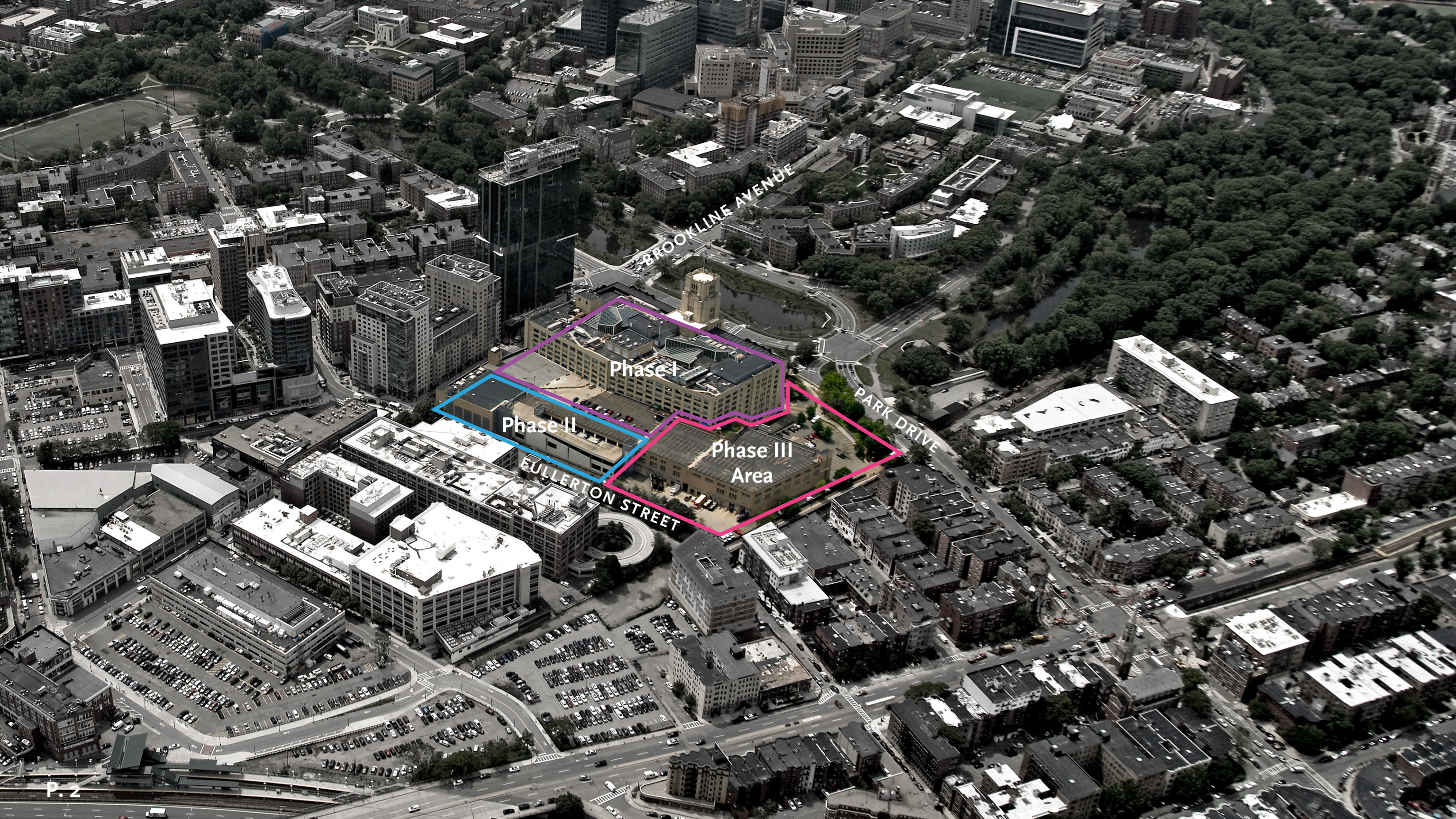


401 PARK Phase 3 Review of Project Refinements

October 7, 2022



SAMUELS & ASSOCIATES • • • ALEXANDRIA REAL ESTATE EQUITIES, INC.
ELKUS MANFREDI ARCHITECTS • • • LEBLANC JONES



BROOKLINE AVENUE

PARK DRIVE

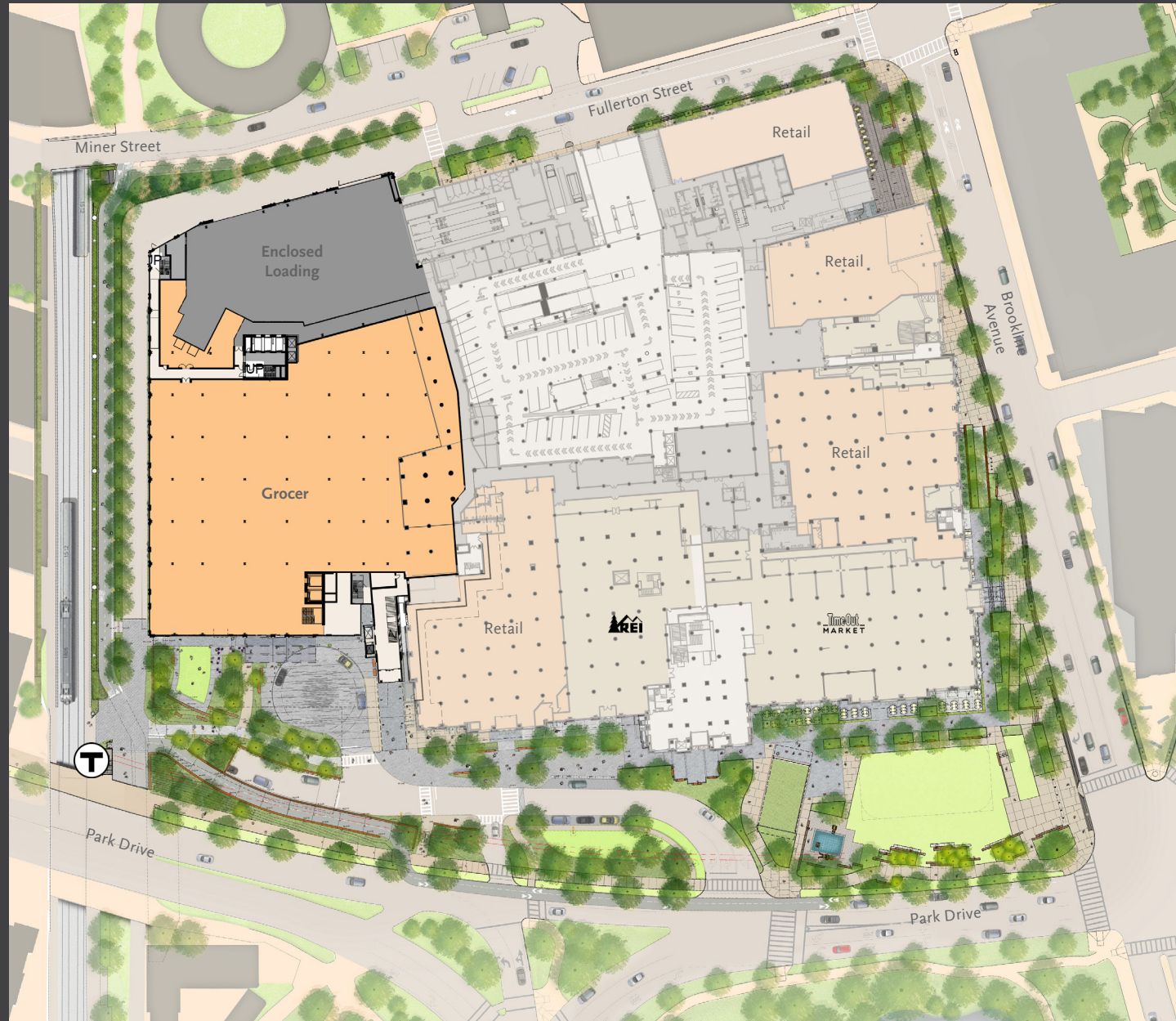
FULLERTON STREET

Phase I

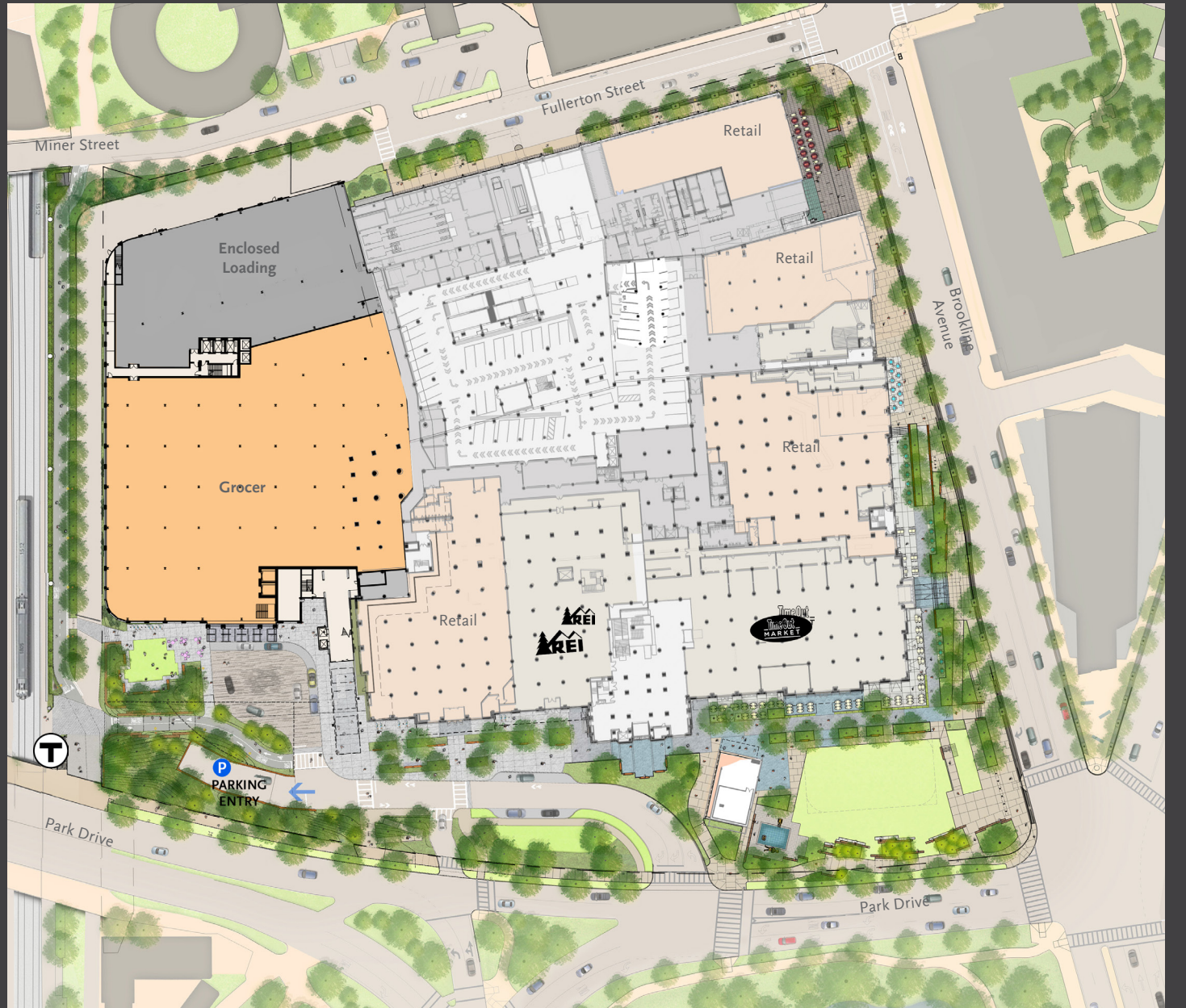
Phase II

Phase III
Area

BUILDING DESIGN



BPDA/BCDC Approved Design



07.06.21



BPDA/BCDC Approved Design

BPDA/BCDC Approvals process

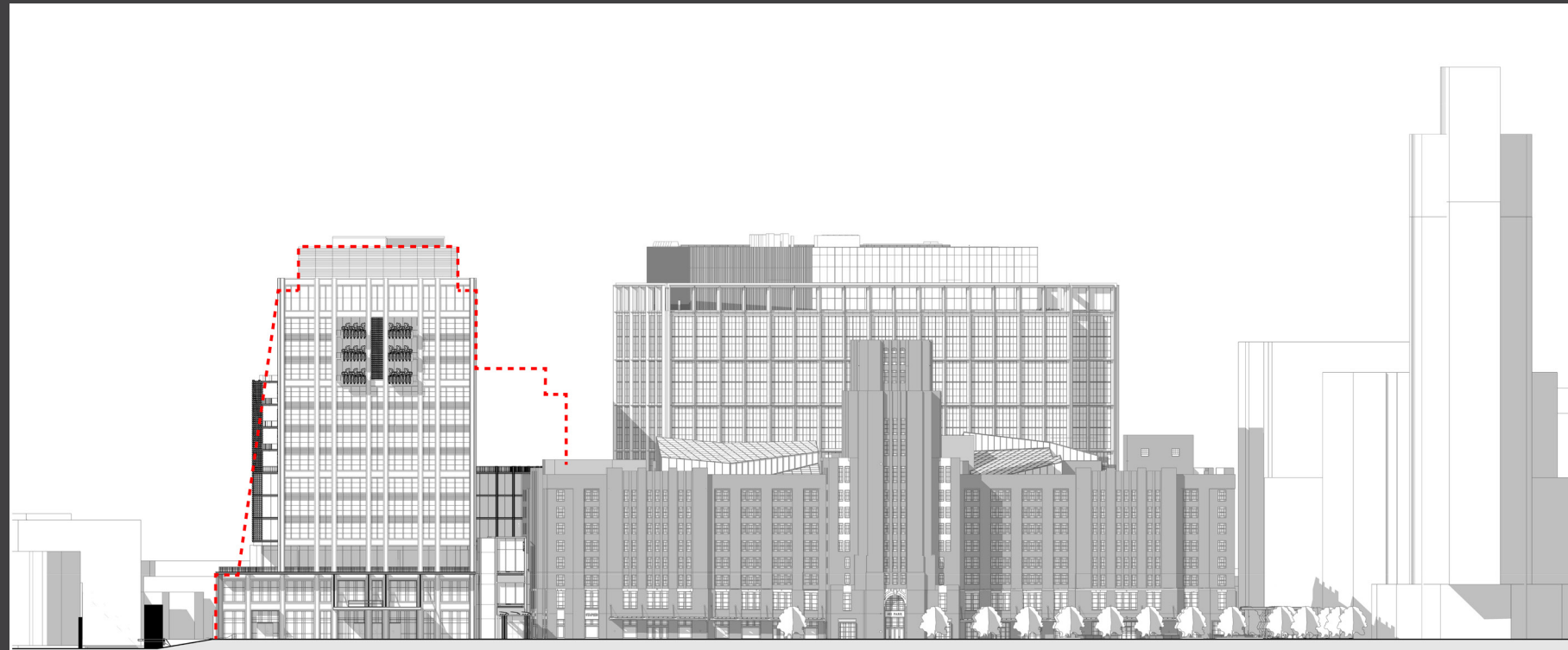
THE ARCHITECTURAL DESIGN OF THE NEW CONSTRUCTION WAS REFINED BASED ON COMMENTS RECEIVED DURING THE BPDA/BCDC PROCESSES. REFINEMENTS INCLUDE ELIMINATING THE CURVED ELEMENT ON THE PARK DRIVE ELEVATION AND CREATING A MORE CONSISTENT ARCHITECTURAL LANGUAGE FOR THE NEW ARCHITECTURE OF PHASE 2 AND 3. THESE REFINEMENTS ARE ALL INTENDED TO ENSURE THAT THE HISTORIC SEARS BUILDING REMAINS AT THE FOREFRONT OF THE VIEW PERSPECTIVE ALONG PARK DRIVE AND THAT THE NEW ARCHITECTURE DOES NOT DRAW ATTENTION AWAY FROM THE HISTORIC BUILDING.



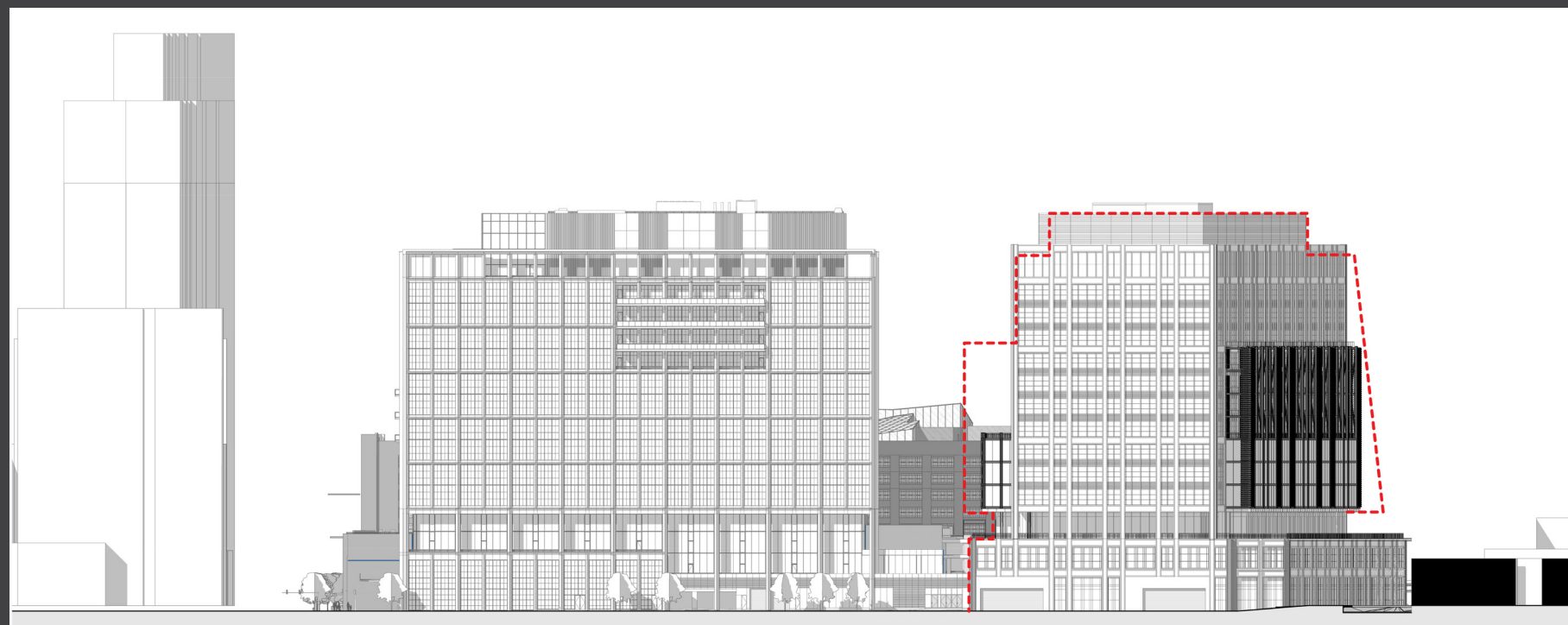


BPDA/BCDC Approved Design

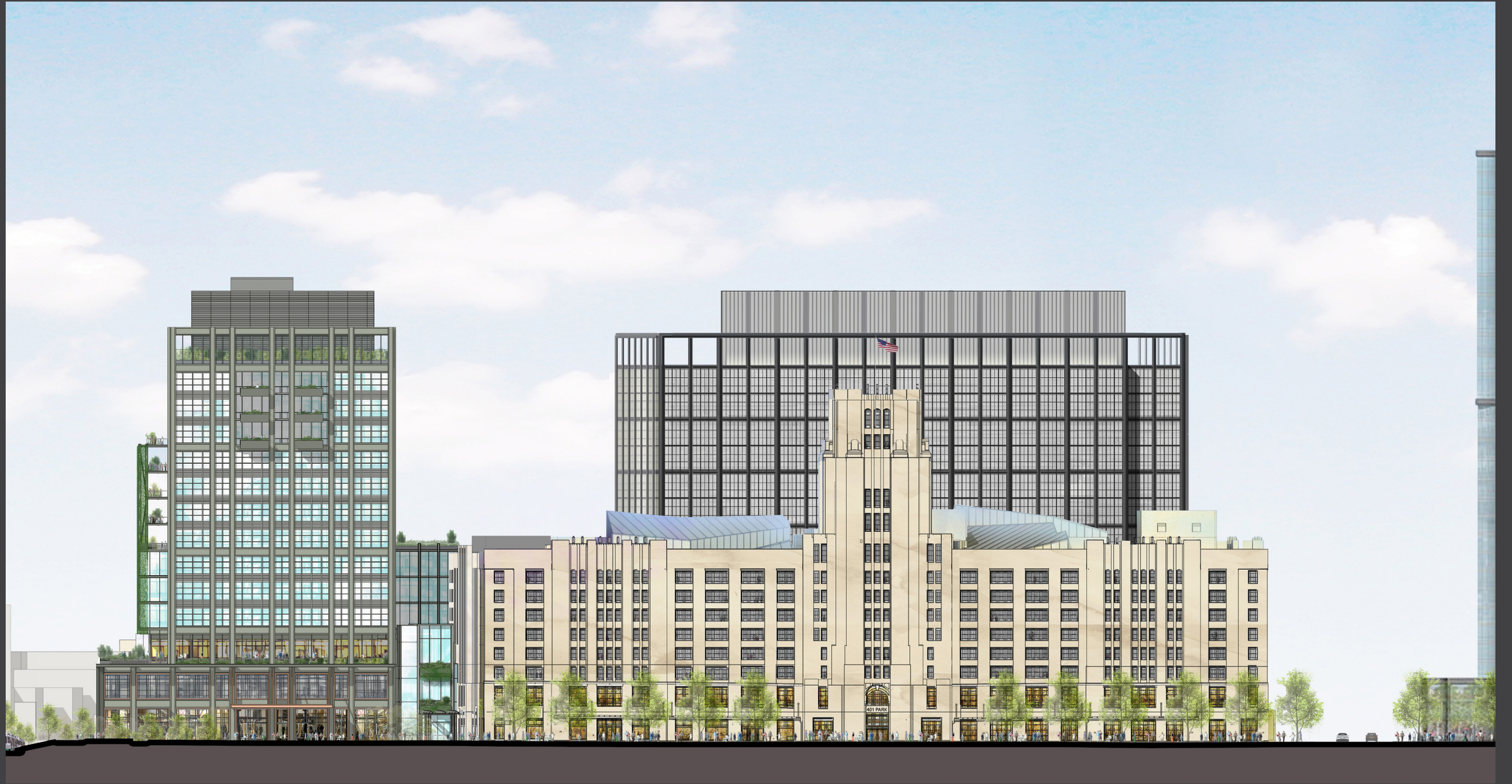




South Elevation



North Elevation







THANK YOU



401 PARK REIMAGINED