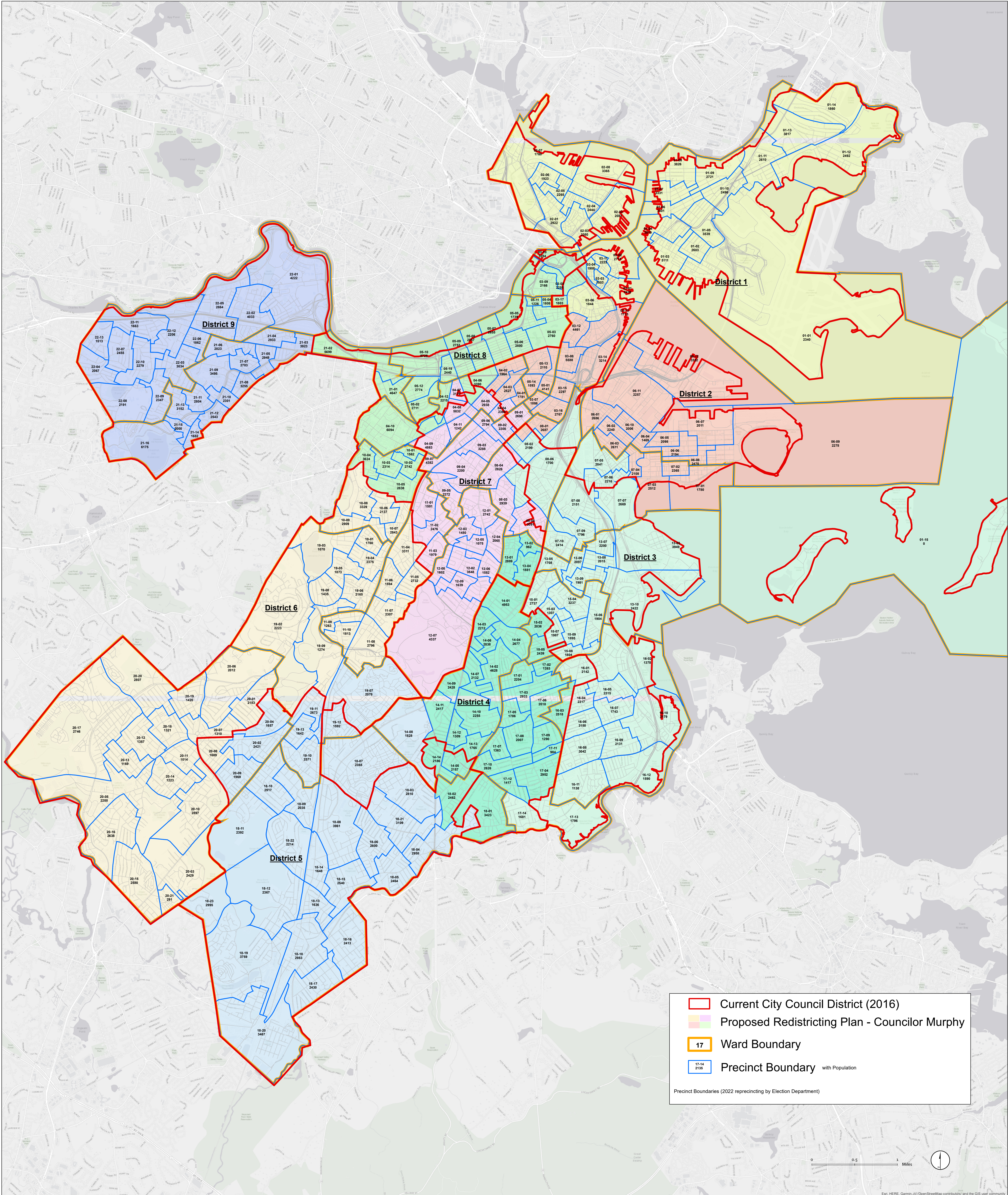


B Proposed Redistricting Plan submitted by Councilor Murphy (Docket #1215)

CITY OF BOSTON



Legend:

- Current City Council District (2016)
- Proposed Redistricting Plan - Councilor Murphy
- Ward Boundary
- Precinct Boundary with Population

Precinct Boundaries (2022 reprecincting by Election Department)