

COMMITTEE ON REDISTRICTING

Working Session – September 23, 2022

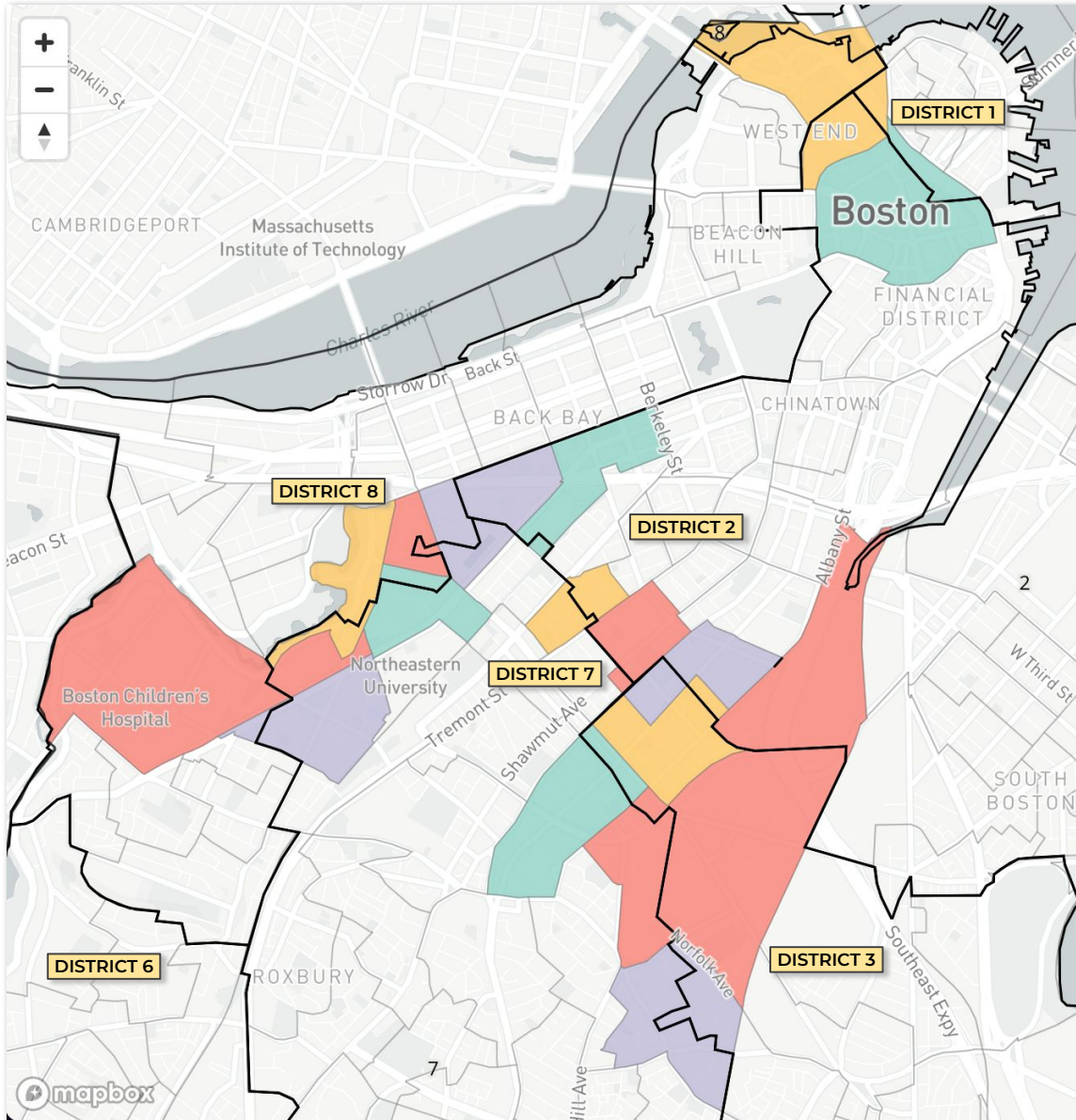
<https://www.boston.gov/public-notices/15921821>



COUNCILOR LIZ BREADON, CHAIR

COUNCILOR BRIAN WORRELL, VICE CHAIR

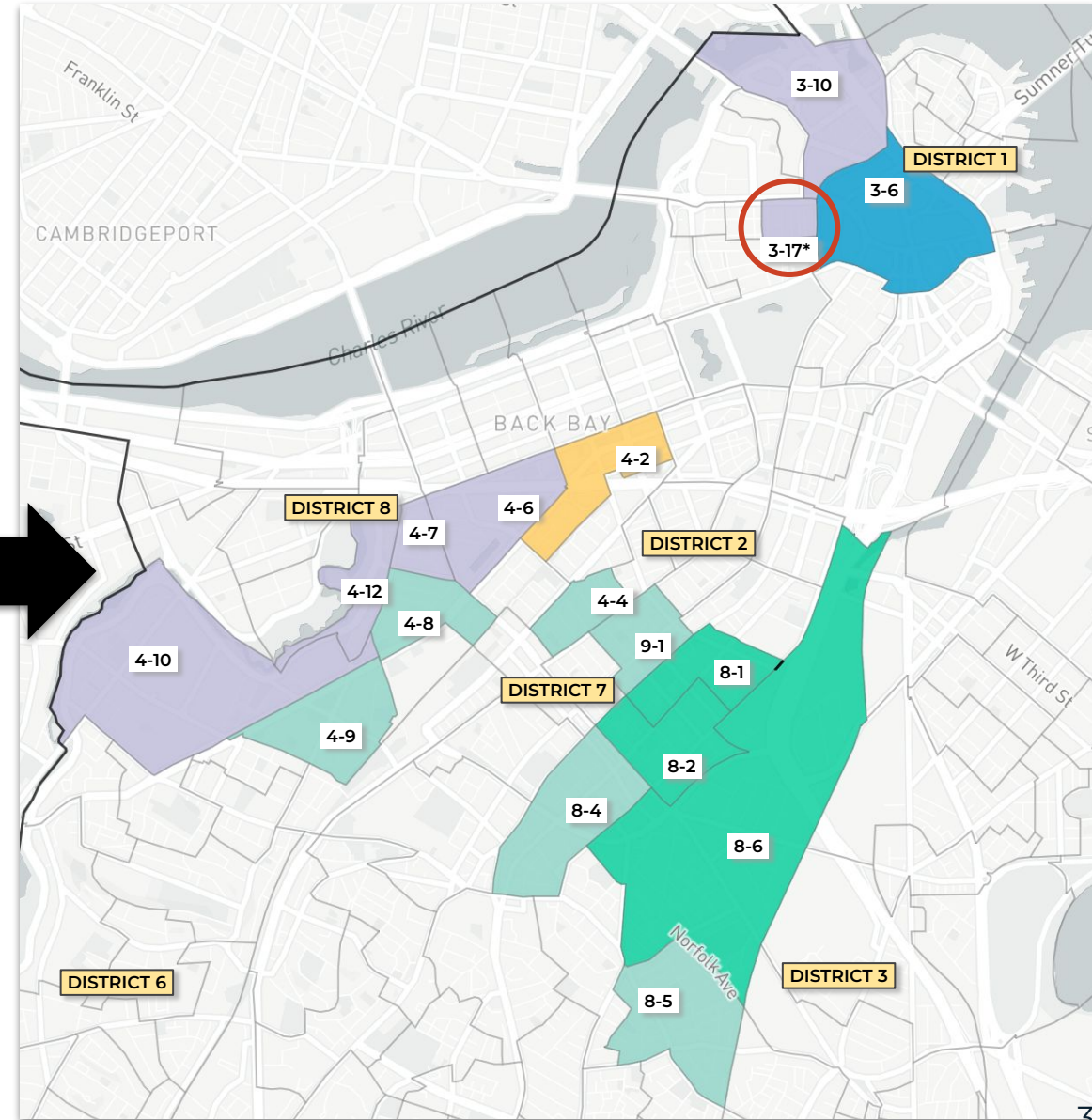
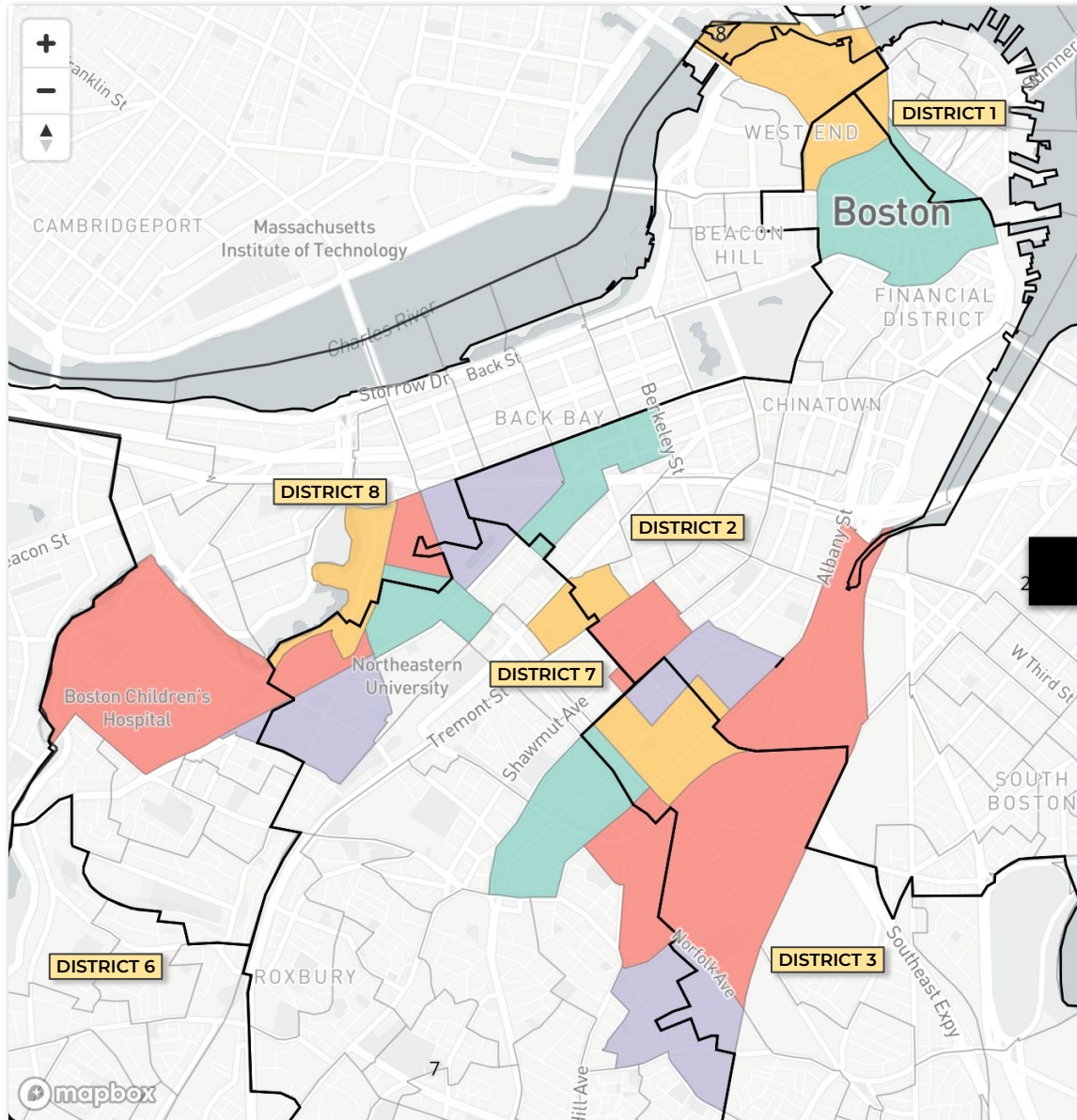
SPLIT PRECINCTS RECONCILED TO “BASELINE” DISTRICTS



At the Committee on Redistricting working session on September 20, 2022, City Councilors reviewed the 16 precincts adjusted by the Board of Election Commissioners that became “split” precincts when overlaying current district lines.

Councilors assigned each split precinct so that all 275 precincts would be entirely within a single district. These “baseline” districts are a starting point for further consideration of potential precinct shifts through the redistricting process.

SPLIT PRECINCTS RECONCILED TO "BASELINE" DISTRICTS

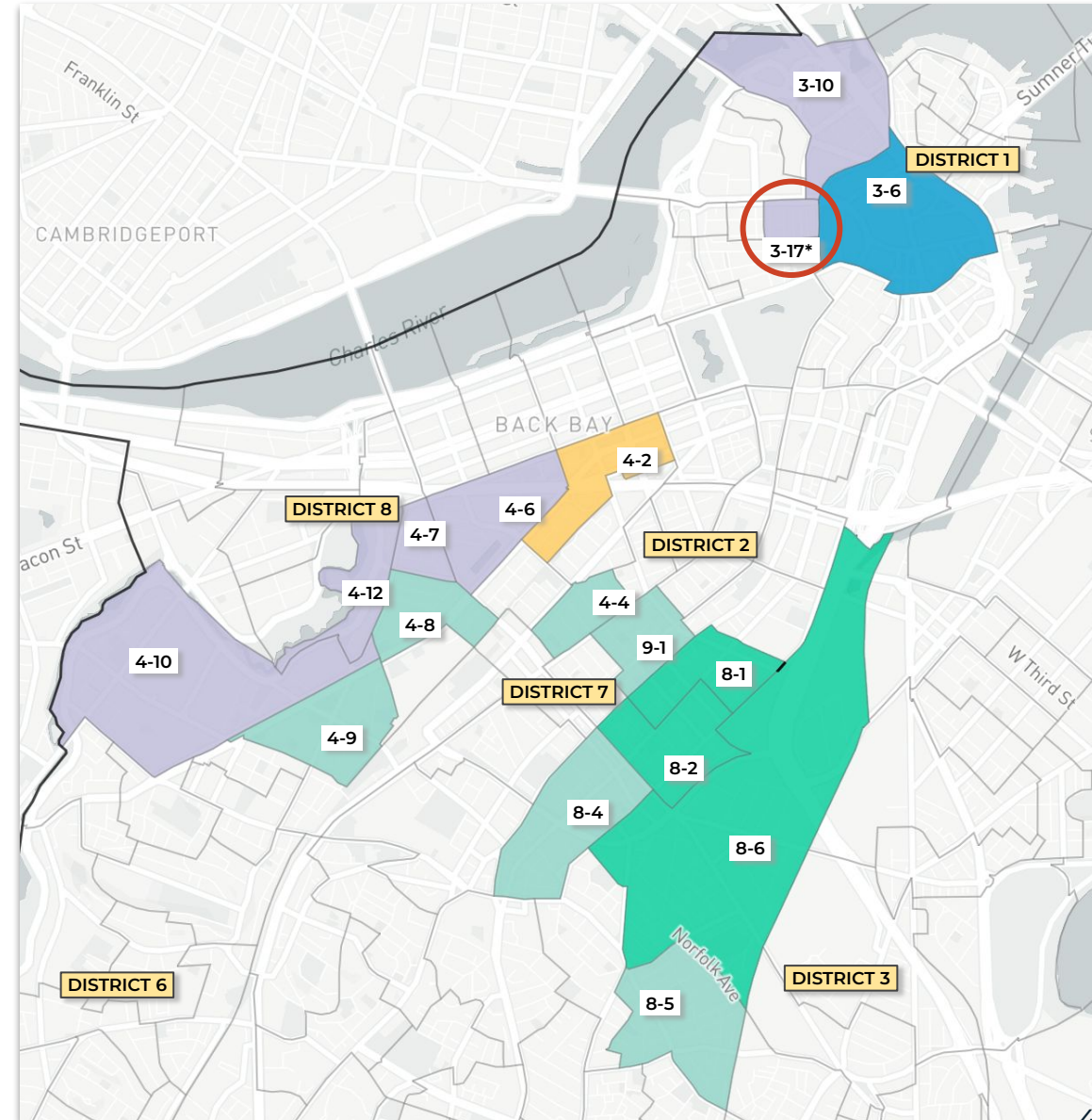


* As a result of assigning the split precinct 3-6 to District 1, the Council reached consensus that the adjacent precinct 3-17 in Beacon Hill be shifted to District 8 for neighborhood cohesion and to keep District 2 contiguous.

SPLIT PRECINCTS RECONCILED TO “BASELINE” DISTRICTS



W-P	“Baseline” District Assigned	2012-2022 Districts (Split pcts.)	Neighborhood	Pop.	White	Black	Hisp.	Asian
3-6 *	1*	1, 2	Downtown	1,844	70%	6%	9%	11%
3-10	8	1, 2, 8	West End	3,284	65%	5%	9%	15%
3-17	8	(2) not split	Beacon Hill	1,803	76%	5%	7%	9%
4-2	2	2, 7	Back Bay	1,964	67%	6%	9%	13%
4-4	7	2, 7	South End	2,360	64%	15%	9%	7%
4-6	8	2, 7	Back Bay	3,390	65%	5%	8%	18%
4-7	8	2, 7, 8	Fenway/Symp.	3,179	49%	8%	10%	27%
4-8	7	7, 8	Fenway/Symp.	5,832	54%	7%	10%	24%
4-9	7	7, 8	Mission Hill	4,863	58%	11%	13%	11%
4-10	8	7, 8	LMA/Fenway	6,094	65%	7%	9%	16%
4-12	8	7, 8	Fenway	2,215	51%	10%	12%	20%
8-1	3	2, 3	South End	2,687	35%	17%	27%	17%
8-2	3	2, 3	South End	2,199	60%	12%	11%	12%
8-4	7	3, 7	Roxbury	2,826	18%	32%	30%	13%
8-5	7	3, 7	Roxbury	3,091	7%	28%	22%	2%
8-6	3	2, 3, 7	Rox./S. Bay	1,700	33%	28%	29%	2%
9-1	7	2, 7	South End	2,698	34%	9%	31%	22%



* As a result of assigning the split precinct 3-6 to District 1, the Council reached consensus that the adjacent precinct 3-17 in Beacon Hill be shifted to District 8 for neighborhood cohesion and to keep District 2 contiguous.



CITY OF BOSTON

IN THE YEAR NINETEEN HUNDRED AND EIGHTY-THREE

AN ORDINANCE

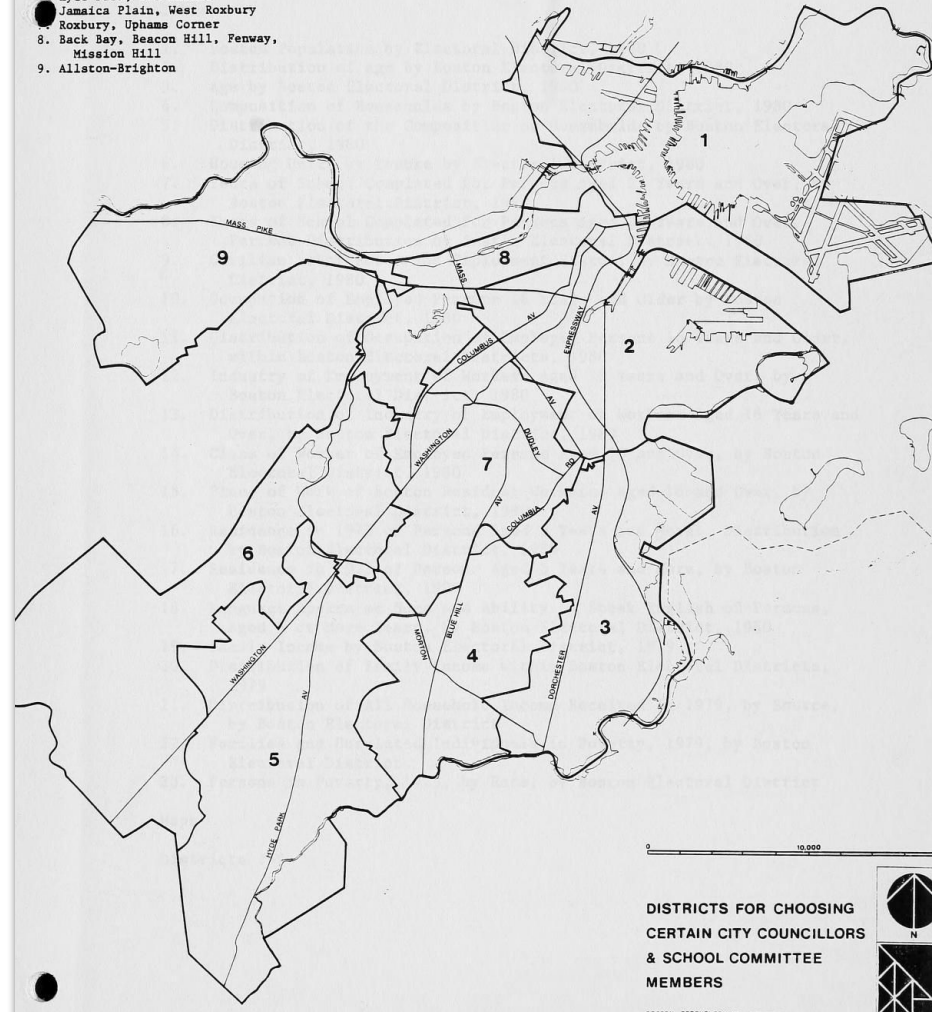
ESTABLISHING DISTRICTS FOR CHOOSING CERTAIN CITY
COUNCILLORS AND SCHOOL COMMITTEE MEMBERS

Be it ordained by the City Council of Boston, in accordance with the provisions of Massachusetts General Laws Chapter 43B, Section 13, and any other applicable law, as follows:

1. SECTION 1. Notwithstanding any ordinance, general or
2. special law to the contrary, for the purposes of choosing those
3. city councillors and members of the school committee who are to
4. be Elected from equally populous districts, the city is hereby
5. divided, conformably with the constitution, into the following
6. nine districts:
7. District One - consisting of precincts numbered one
8. through fourteen of Ward One, precincts numbered one through
9. seven of Ward Two, and precincts numbered one through five of
10. Ward Three.
11. District Two - Consisting of precincts numbered seven
12. and eight of Ward Three, precincts numbered one through four of
13. Ward Four, the precinct numbered one of Ward Five, precincts
14. numbered one through nine of Ward Six, precincts numbered one
15. through nine of Ward Seven, precincts numbered one and two of
16. Ward Eight, and precincts numbered one and two of Ward Nine.
17. District Three - Consisting of precincts numbered three,
18. and six through ten of Ward Thirteen, precincts numbered one
19. through nine of Ward Fifteen, precincts numbered one through
20. twelve of Ward Sixteen, and precincts numbered four, nine, and
- eleven through fourteen of Ward Seventeen.

BOSTON ELECTORAL DISTRICTS

1. East Boston, Charlestown, North End
2. South Boston, South End
3. Dorchester, Savin Hill
4. Dorchester, Franklin Field, Mattapan
5. Hyde Park, Roslindale
6. Jamaica Plain, West Roxbury
7. Roxbury, Uphams Corner
8. Back Bay, Beacon Hill, Fenway, Mission Hill
9. Allston-Brighton



1983 First* Map using 1980 Census, effective for 1983-1991 Municipal Elections.

Demographic details by City Council district to be added.

* Initial map passed by City Council and approved by Mayor in 1982 found unconstitutional.

PAST REDISTRICTING PLANS – 1993



Ordinances of 1993 - Chapter 4 Establishing Nine Electoral Districts

Be it ordained by the City Council of Boston, as follows:

City of Boston Code, Ordinances 2-9.2 is hereby amended by striking the same and inserting in its place, the following:

The districts redrawn under authority of Chapter 605 of the Acts of 1982 as amended by Chapter 343 of the Acts of 1986 are hereby redrawn, as follows:-

District One - Consisting of precincts numbered one through fourteen of Ward One; precincts numbered one through seven of Ward Two; and precincts numbered one through six of Ward Three, except that portion of US Census District 1501 lying South of Ward One precinct one.

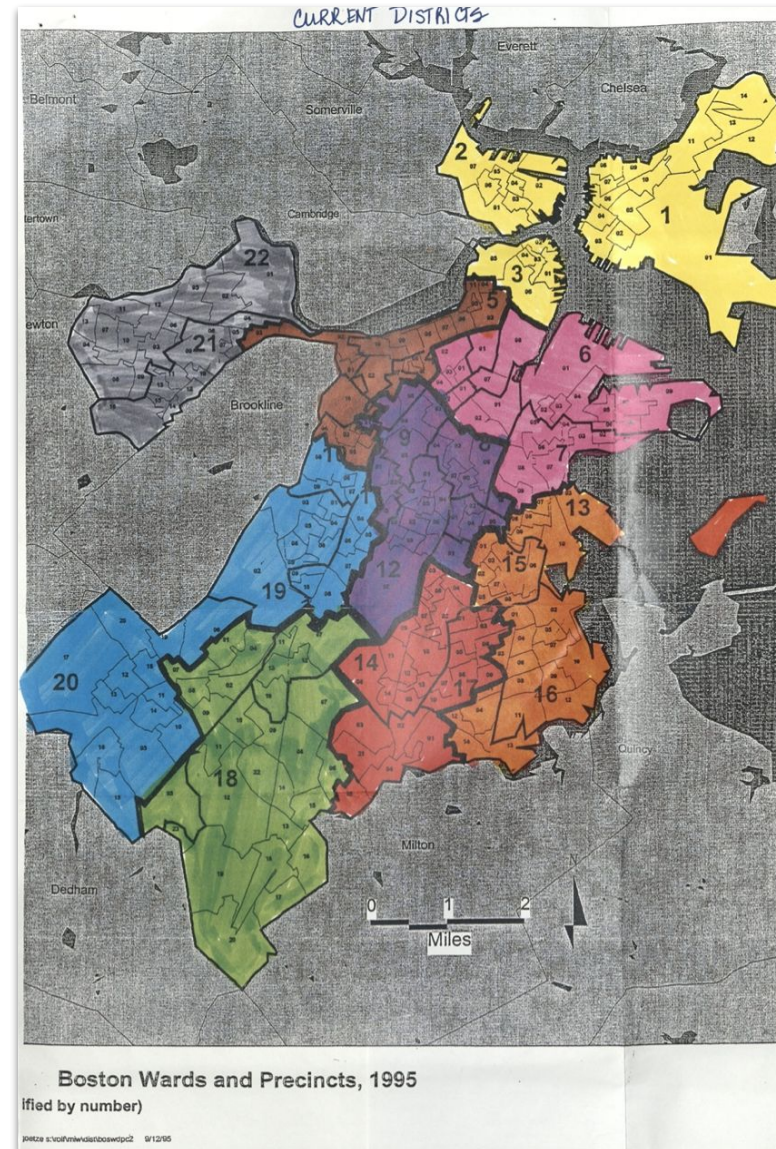
District Two - Consisting of precincts numbered seven and eight of Ward Three; precincts numbered one through four of Ward Four; the precinct numbered one of Ward Five; precincts numbered one through nine of Ward Six; precincts numbered one through nine of Ward Seven; precincts numbered one and two of Ward Eight; and, precincts numbered one and two of Ward Nine.

District Three - Consisting of precincts numbered three, and six through ten of Ward Thirteen; precincts numbered one through nine of Ward Fifteen; precincts numbered one through twelve of Ward Sixteen; precincts numbered four, and eleven through fourteen of Ward Seventeen; and, that portion of US Census District 1501 lying South of Ward One, Precinct one.

District Four - Consisting of precincts numbered two through fourteen of Ward Fourteen; precincts numbered one through three, and five through ten of Ward Seventeen; and precincts numbered one through five, and twenty-one of Ward Eighteen.

District Five - Consisting of precincts numbered six through twenty, twenty-two and twenty-three of Ward Eighteen; precincts numbered seven, and ten through thirteen of Ward Nineteen; and precincts numbered one through four, and seven through nine of Ward Twenty.

District Six - Consisting of precincts numbered six through nine of Ward Ten; precincts numbered four through ten of Ward Eleven; precincts numbered one through six, eight and nine of Ward Nineteen; and precincts numbered five, six, and ten through twenty of Ward Twenty.



1993 Redistricting using 1990 Census, effective for 1993-2001 Municipal Elections.

Demographic details by City Council district to be added.

PAST REDISTRICTING PLANS – 2002



ORDINANCES OF 2002 – CHAPTER 7

CITY OF BOSTON

IN THE YEAR TWO THOUSAND AND TWO

AN ORDINANCE AMENDING CITY COUNCIL ELECTORAL DISTRICTS



Be it ordained by the City Council of Boston, as follows:

City of Boston Code, Ordinances, Chapter Two be amended by striking 2-9.2 in its entirety and replacing it with the following new language:

The districts redrawn under authority of Chapter 605 of the Acts of 1982 as amended by Chapter 343 of the Acts of 1986 are hereby redrawn, as follows:

District One - Consisting of precincts numbered one through fourteen of Ward One; precincts numbered one through seven of Ward Two; and precincts numbered one through four, and six of Ward Three.

District Two - Consisting of precincts numbered seven and eight of Ward Three; precincts numbered one through three of Ward Four; the precinct numbered one of Ward Five; precincts numbered one through nine of Ward Six; precincts numbered one through nine of Ward Seven; precincts numbered one and two of Ward Eight; and precinct number one of Ward Nine.

District Three - Consisting of precinct numbered fifteen of Ward One; precincts numbered three, and six through ten of Ward Thirteen; precincts numbered one, three, four, and six through nine of Ward Fifteen; precincts numbered one through twelve of Ward Sixteen; and precincts numbered four, and twelve through fourteen of Ward Seventeen.

District Four - Consisting of precincts numbered one through fourteen of Ward Fourteen; precincts numbered two and five of Ward Fifteen; precincts numbered one through three, and five through eleven of Ward Seventeen; and precincts numbered one, two, and four of Ward Eighteen.

District Five - Consisting of precincts numbered three, and five through twenty-three of Ward Eighteen; precincts numbered ten, eleven, and thirteen of Ward Nineteen; and precincts numbered one, two, four, eight, and nine of Ward Twenty.

District Six - Consisting of precincts numbered six, seven, and nine of Ward Ten; precincts numbered four, and six through ten of Ward Eleven; precincts numbered one through nine, and twelve of Ward Nineteen; and precincts numbered three, five through seven, and ten through twenty of Ward Twenty.

District Seven - Consisting of precincts numbered four, five, eight, and nine of Ward Four; precinct numbered ten of Ward Seven; precincts numbered three through seven of Ward Eight; precincts numbered two through five of Ward Nine; precincts numbered one through three, and five of Ward Eleven; precincts numbered one through nine of Ward Twelve; and precincts numbered one, two, four, and five of Ward Thirteen.

District Eight - Consisting of precinct numbered five of Ward Three; precincts numbered six, seven, and ten of Ward Four; precincts numbered two through eleven of Ward Five; precincts numbered one through five, and eight of Ward Ten; and precincts numbered one and two of Ward Twenty-One.

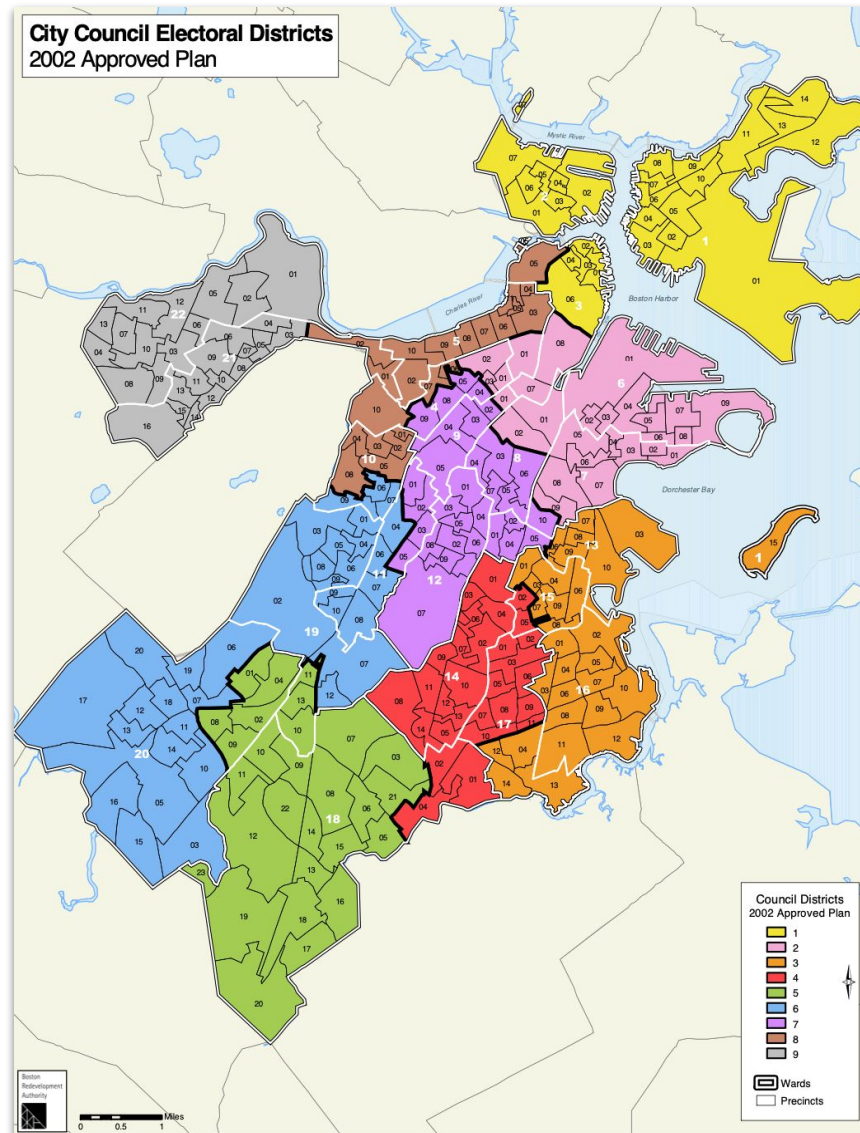
District Nine - Consisting of precincts numbered three through sixteen of Ward Twenty-One; and, precincts numbered one through thirteen of Ward Twenty-Two.

IN CITY COUNCIL OCTOBER 2, 2002. PASSED, YEAS NINE, NAYS TWO.
APPROVED BY THE MAYOR OCTOBER 7, 2002.

ATTEST:

Rosaria Salerno
ROSARIA SALERNO
CITY CLERK

City Council Electoral Districts
2002 Approved Plan



2002 Redistricting using 2000 Census, effective for 2003-2011 Municipal Elections.

Demographic details by City Council district to be added.

PAST REDISTRICTING PLANS – 2012 (CURRENT)



CITY OF BOSTON
Ordinances of 2012 – Chapter 6

IN THE YEAR TWO THOUSAND AND TWELVE

**AN ORDINANCE AMENDING
CITY COUNCIL ELECTORAL DISTRICTS**

Be it ordained by the City Council of Boston, as follows:

City of Boston Code, Ordinances, Chapter Two be amended by striking 2-9.2 in its entirety and replacing it with the following new language:

The districts redrawn under authority of Chapter 605 of the Acts of 1982 as amended by Chapter 343 of the Acts of 1986 are hereby redrawn, as follows:

District One - Consisting of precincts numbered one through fourteen of Ward One; precincts numbered one through seven of Ward Two; and precincts numbered one through four of Ward Three.

District Two - Consisting of precincts numbered six through eight of Ward Three; precincts numbered one through three of Ward Four; precinct number one of Ward Five; precincts numbered one through nine of Ward Six; precincts numbered one through six of Ward Seven; precinct number one of Ward Eight; and precinct number one of Ward Nine.

District Three - Consisting of precinct number fifteen of Ward One; precincts numbered two and six of Ward Eight; precincts seven through ten of Ward Seven; precincts numbered three and five through ten of Ward Thirteen; precincts numbered one, three, four, and six through nine of Ward Fifteen; precincts numbered two and four through twelve of Ward Sixteen; and precinct number thirteen in Ward Seventeen.

District Four - Consisting of precincts numbered one through four, and six through thirteen of Ward Fourteen; precincts numbered two and five of Ward Fifteen; precincts numbered one and three of Ward Sixteen; precincts numbered one through twelve and fourteen of Ward Seventeen; precincts numbered one and seven of Ward Eighteen; and precinct number twelve of Ward Nineteen.

District Five - Consisting of precincts numbered five and fourteen of Ward Fourteen; precincts numbered two through six, and eight through twenty-three of Ward Eighteen; precincts numbered ten, eleven, and thirteen of Ward Nineteen; and precincts numbered two, four, eight, and nine of Ward Twenty.

District Six - Consisting of precincts numbered six through nine of Ward Ten; precincts numbered four through ten of Ward Eleven; precincts numbered one through nine of Ward Nineteen; and precincts numbered one, three, five through seven, and ten through twenty of Ward Twenty.

District Seven - Consisting of precincts numbered four, five, eight and nine of Ward Four; precincts numbered three through five and seven of Ward Eight; precincts numbered two through five of Ward Nine; precincts numbered one through three of Ward Eleven; and precincts numbered one through nine of Ward Twelve; and precincts numbered one, two, and four of Ward Thirteen.

District Eight - Consisting of precinct number five of Ward Three; precincts numbered six, seven and ten of Ward Four; precincts numbered two through eleven of Ward Five; precincts numbered one through five of Ward Ten; and precincts numbered one and two of Ward Twenty-One.

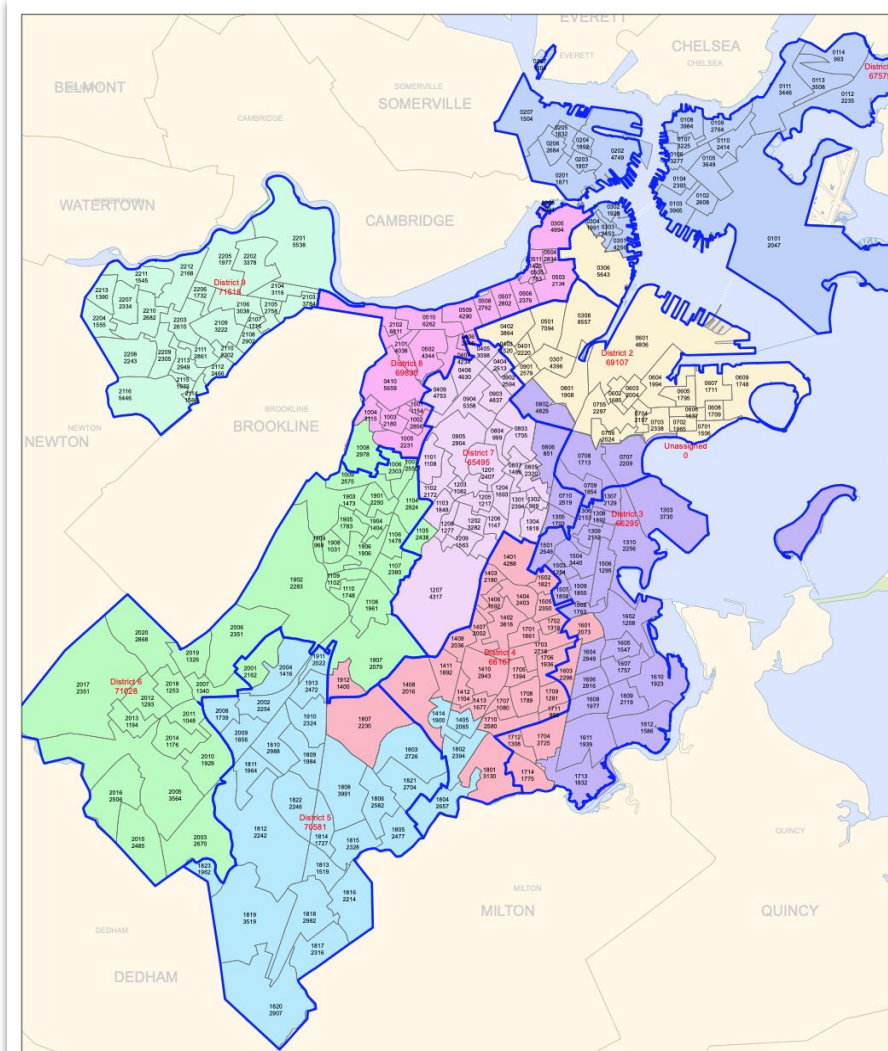
District Nine - Consisting of precincts numbered three through sixteen of Ward Twenty-One; and, precincts numbered one through thirteen of Ward Twenty-Two.

In City Council October 31, 2012. Passed, yeas 11,
Approved by the Mayor November 2, 2012. nays 2.

Attest:

Maureen Feeney
Maureen Feeney
City Clerk

Filed in City Council: October 31, 2012



City of Boston
City Council Approved Map 2012

0 200 400 Feet
November 2012



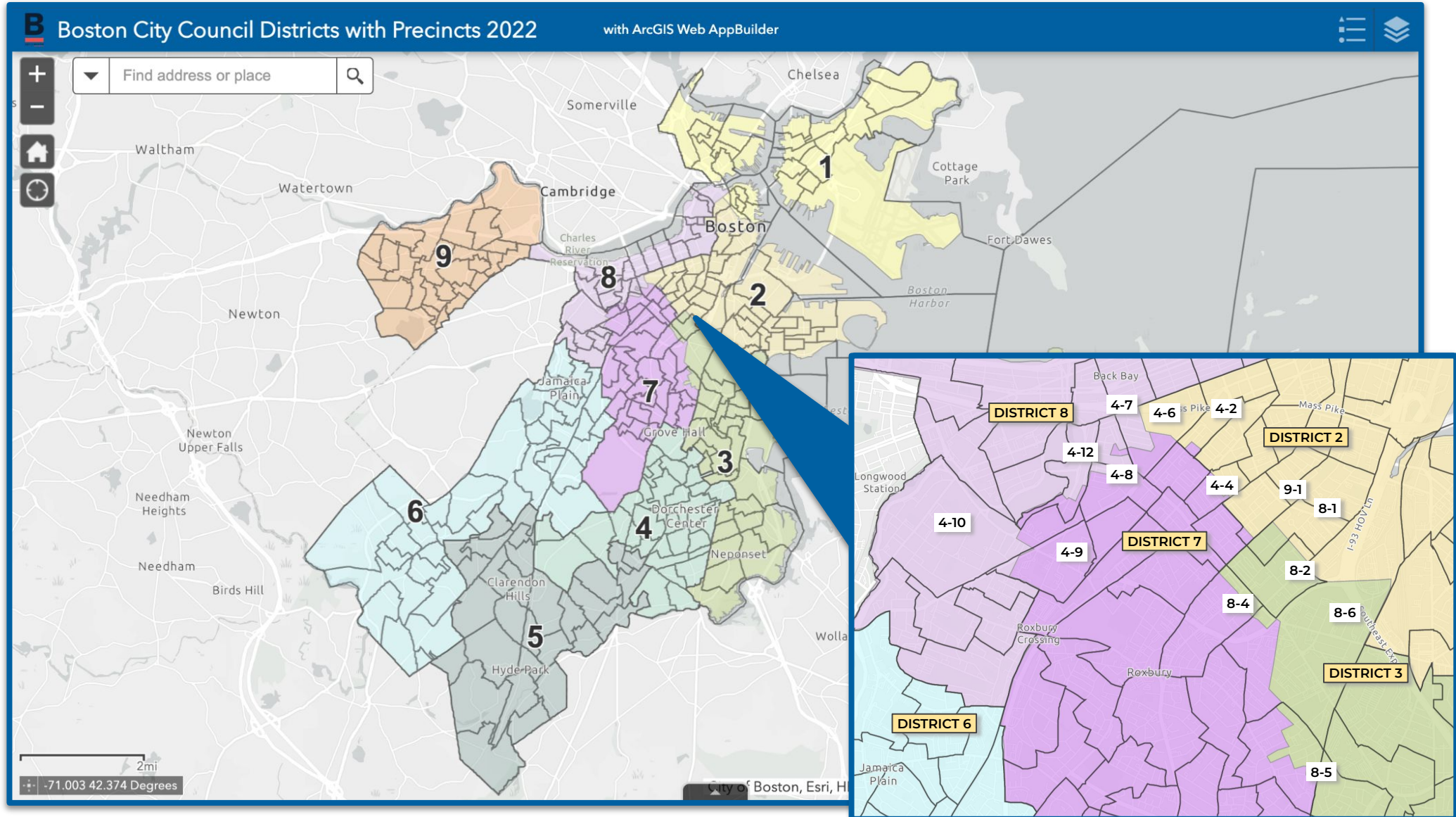
2012 Redistricting using 2010 Census, effective for 2013-2021 Municipal Elections.

Demographic details by City Council district on Slide 12.

CURRENT DISTRICTS WITH SPLIT PRECINCTS



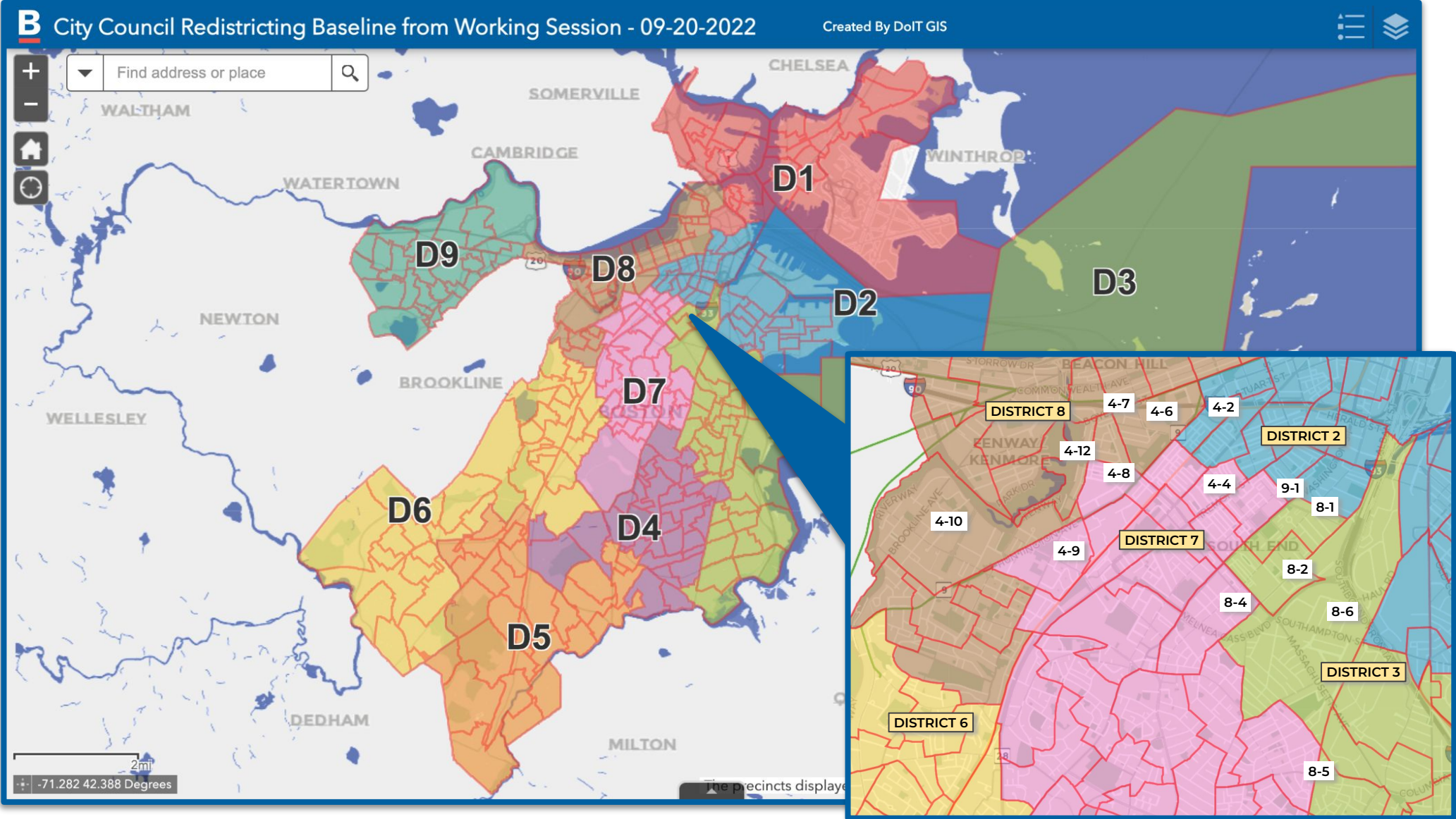
DoIT GIS Interactive Map Viewer: <https://boston.maps.arcgis.com/apps/webappviewer/index.html?id=4af2c3a537ca480d80fdb899287e1070>



BASELINE DISTRICTS WITH ALL PRECINCTS (NO SPLIT)



DoIT GIS Interactive Map Viewer: <https://boston.maps.arcgis.com/apps/webappviewer/index.html?id=8cafe3d804a740b9be1ec1440fe583a1>



BASELINE DISTRICTS WITH ALL PRECINCTS (NO SPLIT)



DoIT GIS Interactive Map Viewer: <https://boston.maps.arcgis.com/apps/webappviewer/index.html?id=8cafe3d804a740b9be1ec1440fe583a1>

B
City Council Redistricting Baseline from Working Session - 09-20-2022
Created By DoIT GIS

+
-
🏠
🕒

🔍

2mi
POWERED BY esri

Boston Precinct Boundaries

City Council redistricting working session 09_20_22

☰ Options
Filter by map extent
📍 Zoom to
🗑️ Clear selection
🔄 Refresh

LONGNAME	TOTAL	TARGET_DEV	TARGET_D_1	TOTALHISP	WHITENH	BLACKNH	ASIANNH	OTHERNH	MLTMNNH	+
Unassigned	0.00	0.00	0.00	0.00	0.00	0.00	0.00	0.00	0.00	
District 1	75,117.00	45.00	0.06	24,479.00	40,229.00	3,082.00	4,779.00	1,649.00	536.00	
District 2	76,706.00	1,634.00	2.18	5,757.00	53,328.00	3,583.00	12,455.00	888.00	472.00	
District 3	69,638.00	-5,434.00	-7.24	11,438.00	26,663.00	13,388.00	11,698.00	2,519.00	3,682.00	
District 4	71,811.00	-3,261.00	-4.34	18,359.00	6,541.00	37,114.00	3,917.00	1,683.00	3,837.00	
District 5	75,245.00	173.00	0.23	17,582.00	18,423.00	34,443.00	1,877.00	1,039.00	1,624.00	
District 6	74,914.00	-158.00	-0.21	12,439.00	45,425.00	7,724.00	7,121.00	1,218.00	713.00	
District 7	77,783.00	2,711.00	3.61	19,740.00	19,175.00	26,160.00	7,827.00	1,753.00	2,810.00	
District 8	79,760.00	4,688.00	6.24	7,892.00	47,674.00	5,250.00	17,005.00	1,153.00	494.00	
District 9	74,673.00	-399.00	-0.53	8,427.00	44,006.00	4,092.00	15,324.00	1,905.00	546.00	

10 features 0 selected

2010 VS. 2020 ON CURRENT DISTRICTS ADOPTED IN 2012



2010 Census	Total Population	Deviation (%) from 68,662		White %	Black %	Hispanic %	Asian %	Other Race %	2+ Races %	Non-White %	Housing Units
Boston	617,594	±5% range: 65,190 - 72,095		47.0	22.4	17.5	8.9	1.6	2.4	53.0	272,036
District 1	67,575	-1,047	-1.5	54.9	3.3	34.7	4.5	1.1	1.4	45.1	30,976
District 2	69,107	+485	+0.7	68.9	5.6	8.5	14.9	0.4	1.5	31.1	37,695
District 3	66,352	-2,270	-3.3	37.7	23.8	14.7	13.8	5.9	3.9	62.3	27,279
District 4	66,114	-2,508	-3.7	8.2	61.5	20.2	4.3	2.4	3.2	91.9	24,918
District 5	70,477	+1,855	+2.7	27.6	46.9	20.7	1.7	0.7	2.2	72.4	28,884
District 6	71,130	+2,508	+3.7	63.5	10.7	17.3	5.9	0.5	2.0	36.5	31,537
District 7	65,491	-3,131	-4.6	25.0	41.5	23.2	4.8	2.2	3.0	75.0	26,572
District 8	69,832	+1,210	+1.8	67.3	6.2	9.0	14.6	0.3	2.4	32.7	32,263
District 9	71,516	+2,894	+4.2	66.1	4.6	10.0	15.3	1.5	2.4	33.9	31,912

2010 Census on Current District Map
(result of 2012 redistricting)

2020 Census on Current District Map
(start of 2022 redistricting, with split precincts)

2020 Census	Total Population	Deviation (%) from 75,072		White %	Black %	Hispanic %	Asian %	Other Race %	2+ Races %	Non-White %	Housing Units
Boston	675,647	±5% range: 71,318 - 78,825		44.6	19.1	18.7	11.2	1.4	4.8	55.4	301,191
District 1	74,051	-1,021	-1.4	53.3	4.1	33.0	6.3	2.2	3.5	46.0	34,728
District 2	88,553	+13,481	+18.0	67.7	5.3	8.8	16.1	1.2	3.1	31.6	48,980
District 3	68,561	-6,511	-8.7	38.2	19.2	15.9	16.8	3.8	7.7	56.2	29,312
District 4	71,811	-3,261	-4.3	9.1	51.7	25.6	5.5	2.3	7.0	85.5	26,577
District 5	75,245	+173	+0.2	24.5	45.8	23.4	2.5	1.4	4.4	73.3	29,709
District 6	74,914	-158	-0.2	60.6	10.3	16.6	9.5	1.6	4.2	38.4	33,964
District 7	72,842	-2,230	-3.0	23.5	35.1	25.7	9.5	2.2	6.2	72.8	28,357
District 8	75,010	-62	-0.1	59.1	6.7	10.0	21.9	1.4	3.9	40.2	35,202
District 9	74,673	-399	-0.5	58.9	5.5	11.3	20.5	2.6	4.2	40.3	34,362

Population Change 2010 to 2020 (%)		% Share of City's Change	Housing Change 2010 to 2020 (%)		% Share of City's Change
Population Change	%		Housing Change	%	
58,053	+9.4		29,155	+10.7	
6,476	+9.6	11.2	3,752	+12.1	12.9
19,446	+28.1	33.5	11,285	+29.9	38.7
2,209	+3.3	3.8	2,033	+7.5	7.0
5,684	+8.6	9.8	1,659	+6.7	5.7
4,768	+6.8	8.2	825	+2.9	2.8
3,784	+5.3	6.5	2,427	+7.7	8.3
7,351	+11.2	12.7	1,785	+6.7	6.1
5,178	+7.4	8.9	2,939	+9.1	10.1
3,157	+4.4	5.4	2,450	+7.7	8.4

Note: Data gathered from currently available sources and presented for information purposes only; verification is needed with official demographic data published by the City of Boston and Boston Planning and Development Agency.

2022 BASELINE VS. CURRENT DISTRICTS ADOPTED IN 2012



Baseline Districts	Total Population	Deviation (%) from 75,072		White %	Black %	Hispanic %	Asian %	Other Race %	2+ Races %	Non-White %	Change from Actual to Baseline	
Boston	675,647	±5% range: 71,318 - 78,825		44.6	19.1	18.7	11.2	1.4	4.8	55.4	Result of 9-20-22 Working Session	
District 1	75,117	+45	+0.1	53.7	3.5	32.6	5.6	1.2	3.5	46.6	+1,066	+1.4
District 2	76,706	+1,634	+2.2	69.5	4.2	7.5	15.1	0.5	3.0	30.5	-11,847	-13.4
District 3	69,638	-5,434	-7.2	38.3	18.3	16.4	16.2	3.2	7.4	61.7	+1,077	+1.6
District 4	71,811	-3,261	-4.3	9.1	51.7	25.6	5.5	2.3	7.0	85.5		
District 5	75,245	+173	+0.2	24.5	45.8	23.4	2.5	1.4	4.4	73.3		
District 6	74,914	-158	-0.2	60.6	10.3	16.6	9.5	1.6	4.2	38.4		
District 7	77,783	+2,711	+3.6	24.7	32.6	25.4	9.2	1.8	6.1	75.4	+4,941	+6.8
District 8	79,760	+4,688	+6.2	59.8	6.0	9.9	19.5	0.8	3.9	40.2	+4,750	+6.3
District 9	74,673	-399	-0.5	58.9	5.5	11.3	20.5	2.6	4.2	40.3		

Current Districts	Total Population	Deviation (%) from 75,072		White %	Black %	Hispanic %	Asian %	Other Race %	2+ Races %	Non-White %
Boston	675,647	±5% range: 71,318 - 78,825		44.6	19.1	18.7	11.2	1.4	4.8	55.4
District 1	74,051	-1,021	-1.4	53.3	4.1	33.0	6.3	2.2	3.5	46.0
District 2	88,553	+13,481	+18.0	67.7	5.3	8.8	16.1	1.2	3.1	31.6
District 3	68,561	-6,511	-8.7	38.2	19.2	15.9	16.8	3.8	7.7	56.2
District 4	71,811	-3,261	-4.3	9.1	51.7	25.6	5.5	2.3	7.0	85.5
District 5	75,245	+173	+0.2	24.5	45.8	23.4	2.5	1.4	4.4	73.3
District 6	74,914	-158	-0.2	60.6	10.3	16.6	9.5	1.6	4.2	38.4
District 7	72,842	-2,230	-3.0	23.5	35.1	25.7	9.5	2.2	6.2	72.8
District 8	75,010	-62	-0.1	59.1	6.7	10.0	21.9	1.4	3.9	40.2
District 9	74,673	-399	-0.5	58.9	5.5	11.3	20.5	2.6	4.2	40.3

2020 Census on Baseline District Map
(result of Sept. 20, 2022 working session assigning all precincts as a starting point)

2020 Census on Actual District Map
(with split precincts)

Note: Data gathered from currently available sources and presented for information purposes only; verification is needed with official demographic data published by the City of Boston and Boston Planning and Development Agency.



Tentative only – Final schedule subject to revision. Please check boston.gov/redistricting and boston.gov/public-notice for updates.

Prior to filing Redistricting Committee Proposed Map

- *Monday, September 26, 2:00 PM – Working session* (www.boston.gov/public-notice/15921821)
- *Tuesday, September 27, 3:00 PM – Working session* (www.boston.gov/public-notice/15922946)
- *Thursday, September 29, 3:00 PM – Public hearing* (www.boston.gov/public-notice/15922436)
- *Friday, September 30, 10:00 AM – Working session* (www.boston.gov/public-notice/15922476)

Review of Redistricting Committee Proposed Map

- *October 3 – Committee Chair files a proposed map, incorporating feedback provided by Councilors in open sessions and testimony received through community engagement*
- *October 10-25 – Public Committee events 7 days after filing proposal*
 - *Public hearings, Committee meetings, and working sessions*
 - *Disseminate information to neighborhood and civic associations, community organizations, residents across City*
 - *Solicit testimony, feedback, comments*
- *October 26 – Potential date for Council action*
- *November 2 – Potential date for Council action*
- *November 7 – One year prior to November 7, 2023 Municipal Election*



- *Upcoming: Further review of Voting Rights Act requirements, questions for City Law Department and BPDA demographers; Councilor discussion of Community of Interest precincts*
- *Available Resources:*
 - *City of Boston Interactive Maps*
 - *Baseline districts from 9/20/22:*
<https://boston.maps.arcgis.com/apps/webappviewer/index.html?id=8cafe3d804a740b9be1ec1440fe583a1>
 - *Current districts with split precincts:*
<https://boston.maps.arcgis.com/apps/webappviewer/index.html?id=4af2c3a537ca480d80fdb899287e1070>
 - *Analyze Boston 2020 Census Data* <https://data.boston.gov/dataset/2020-census-for-boston>
 - *[Districtr.org/Massachusetts](https://districtr.org/Massachusetts) – Redistricting mapping tool updated with current Boston City Council districts, new precincts, and 2020 Census data*