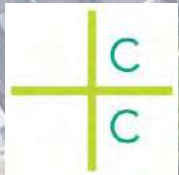


# MCLEAN PARK - COMMUNITY ENGAGEMENT





# AGENDA

- **INTRODUCTION TO PROJECT TEAM**
- **RECAP OF PROCESS SO FAR**
- **REVIEW 2 DESIGN OPTIONS W/ PRECEDENT IMAGES**
- **DISCUSSION AND FEEDBACK SESSION**



# INTRODUCTION

## City of Boston Team.

Annie Blair

Boston Parks Dept.  
Project manager  
ann.frickblair@boston.gov

Nathan Frazee

Boston Parks Dept.  
Interim Project Manager  
nathan.frazee@boston.gov

Christine Brandao

Boston Parks Dept.  
Outreach Coordinator  
christine.brandao@boston.gov

Nathalia Benitez

Neighborhood Services  
East Boston Liason  
nathalia.benitezperez@boston.gov

## Landscape Architects - Crowley Cottrell, LLC



Naomi Cottrell

Principal



Jessica Brown

Associate

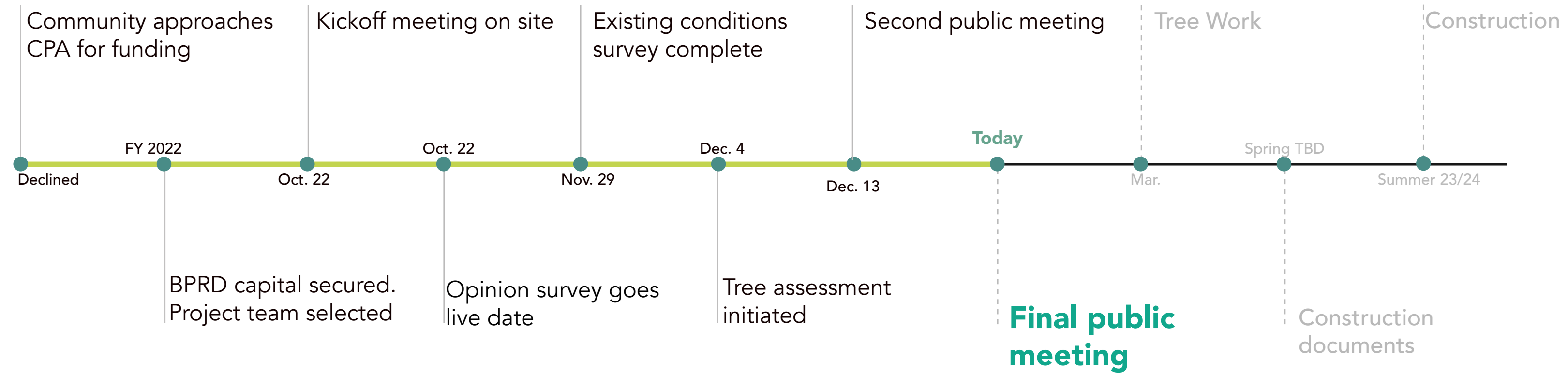


Ana Stolle

Designer



# MCLEAN PARK PROCESS





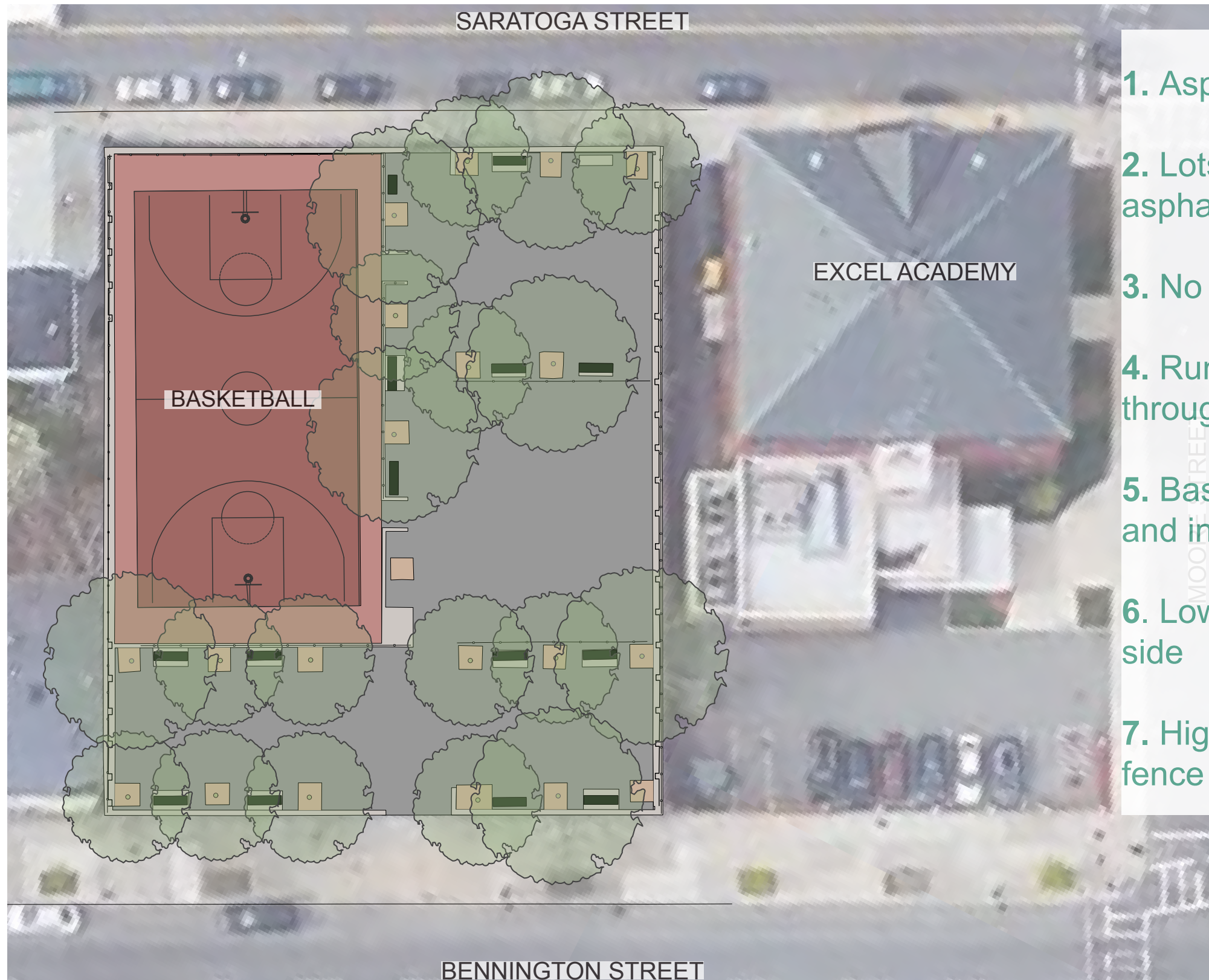
# TOP THINGS WE HEARD FROM COMMUNITY MEETINGS THAT WE AIM TO ADDRESS :

- INCREASED VISIBILITY
- MAINTAIN BASKETBALL COURT
- ADD PLAYGROUND EQUIPMENT
- FIX DRAINAGE ISSUES
- ADD SEATING/TABLES
- NO GRASS
- IMPROVE FLEXIBLE / OPEN PLAY AREAS





# EXISTING CONDITIONS

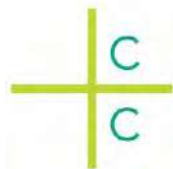
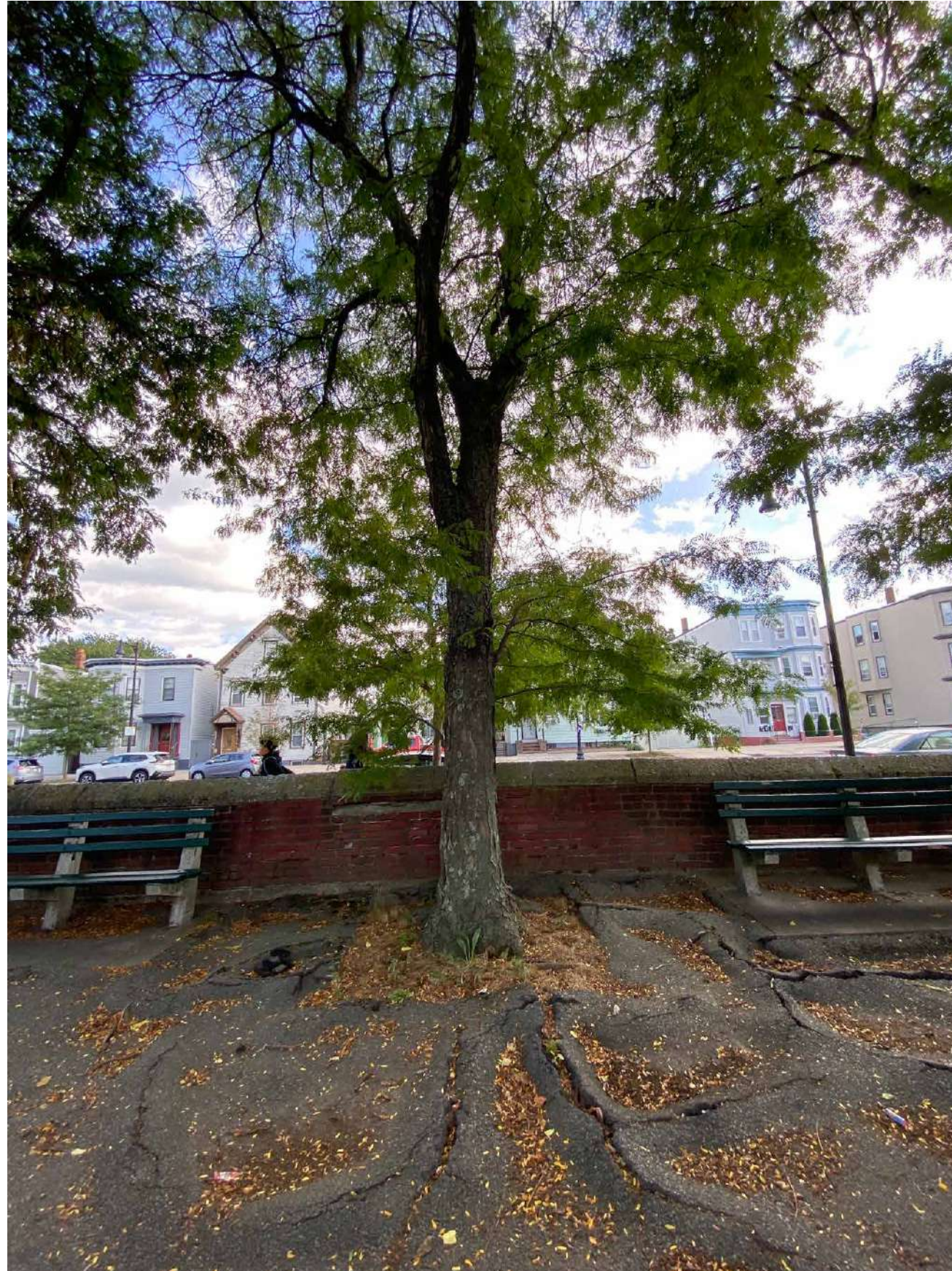
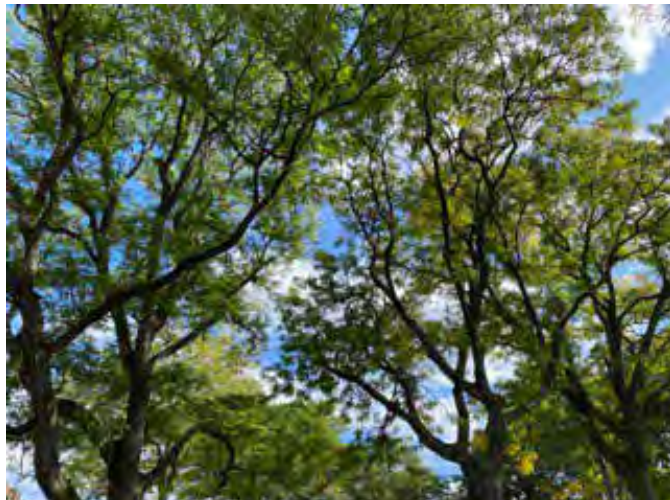


1. Asphalt space
2. Lots of trees, heaving asphalt
3. No play equipment
4. Run down benches throughout, no tables
5. Basketball court, lower and inside concrete curbs
6. Low brick walls on street side
7. High brick walls with fence on top abutter sides





# EXISTING TREES





# TREE PITS

## EXISTING SIZING

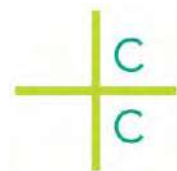


Inadequate tree pits caused tree roots to search for light, air and water. This resulted in the destruction of the asphalt.

## PROPOSED SIZING



New design creates long linear tree pits, that are large enough to handle the needs of the tree, while retaining max play space.





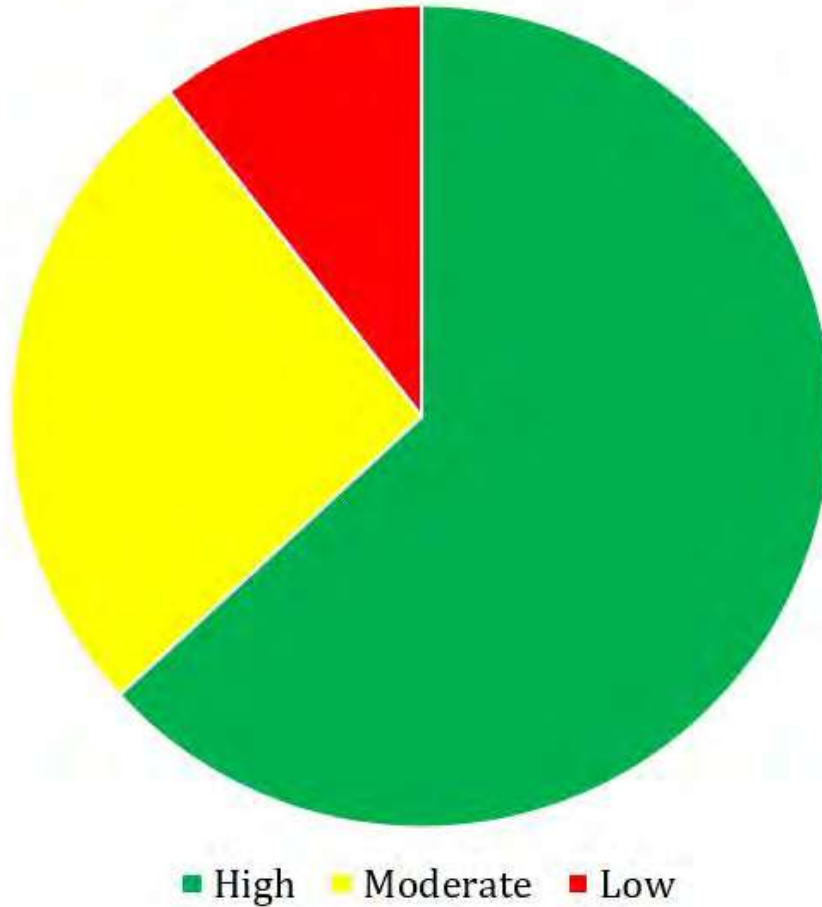
## Suitability for Preservation

The breakdown of suitability for preservation follows:

### SUITABILITY FOR PRESERVATION BREAKDOWN

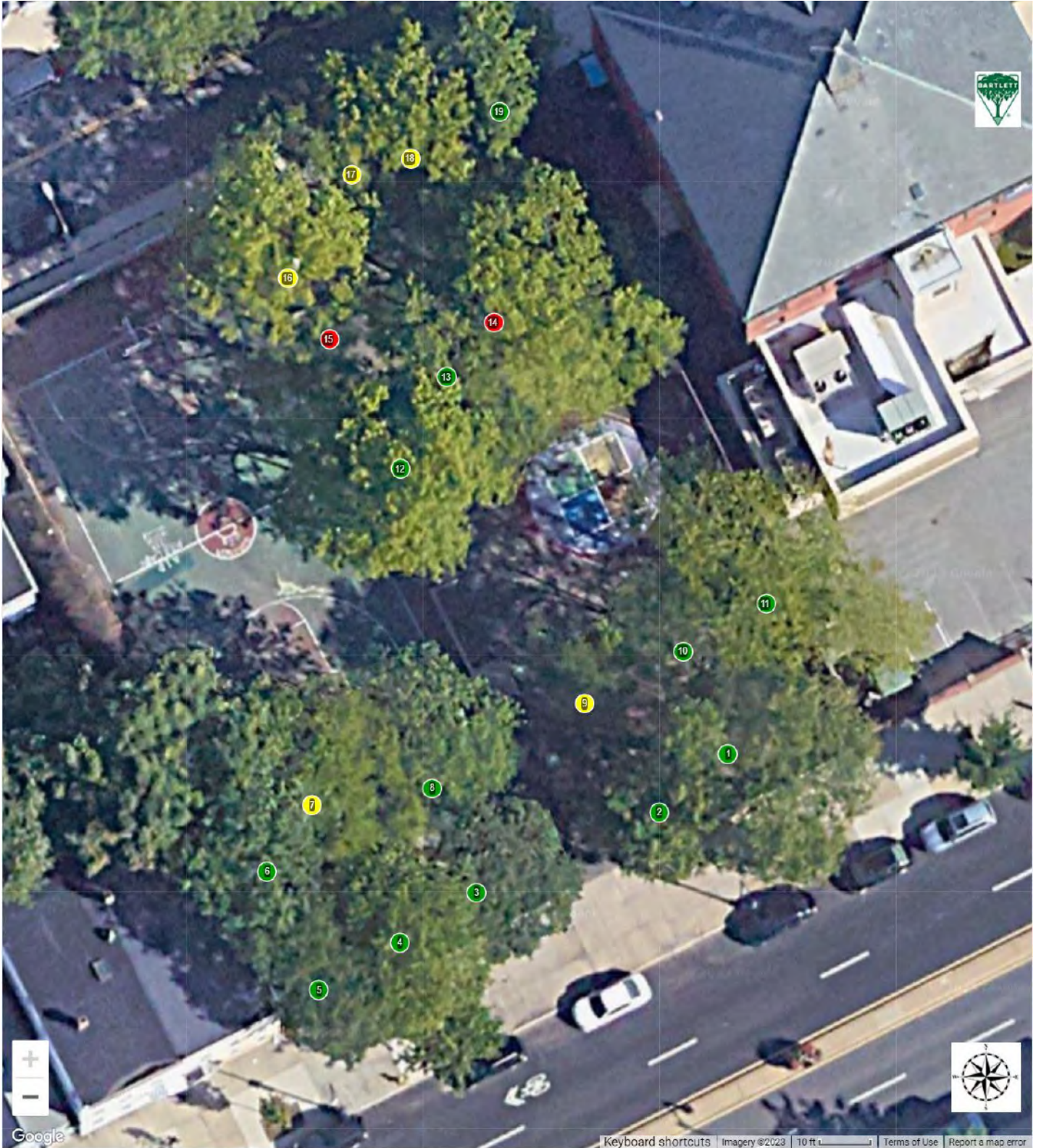
Condition Class	Quantity	% of Total
High	12	63%
Moderate	5	26%
Low	2	11%

## Suitability for Preservation





# INVENTORIED TREES BY SUITABILITY FOR PRESERVATION



Suitability for Preservation: ● High ● Moderate ● Low

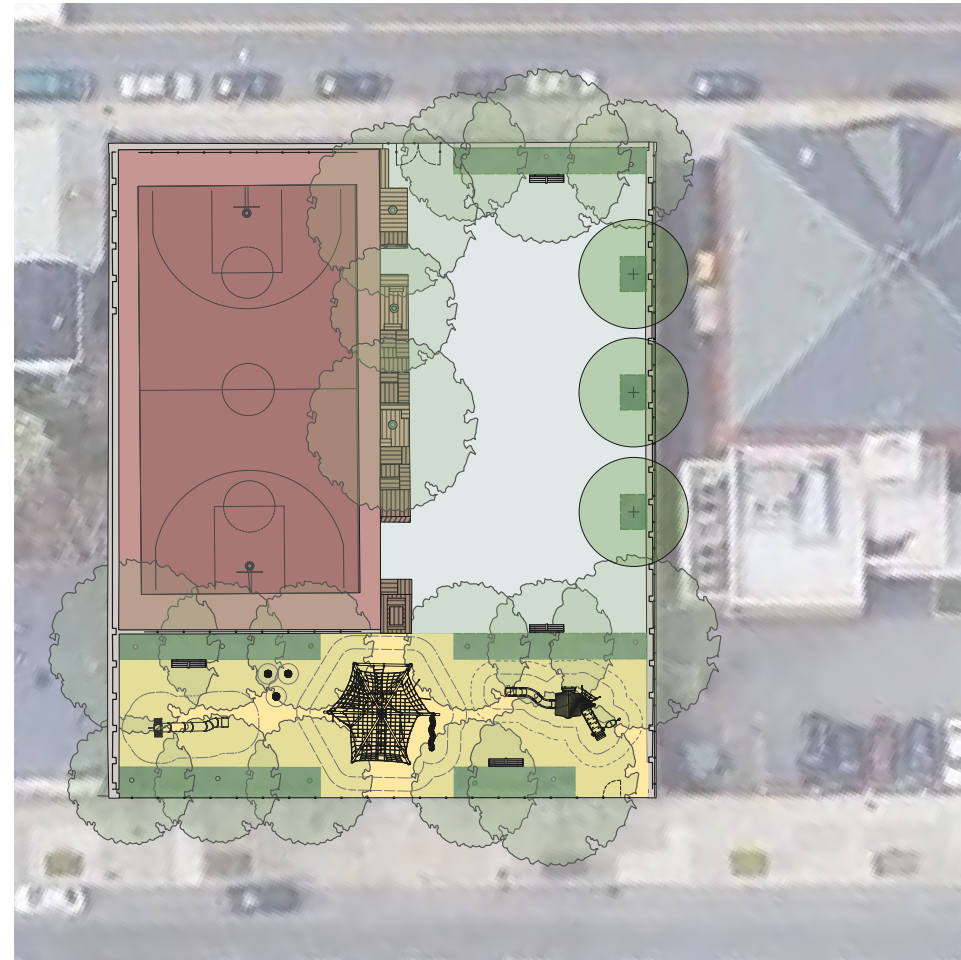


# REVIEW OF THREE PRIOR OPTIONS

SCHEME 1



SCHEME 2



SCHEME 3





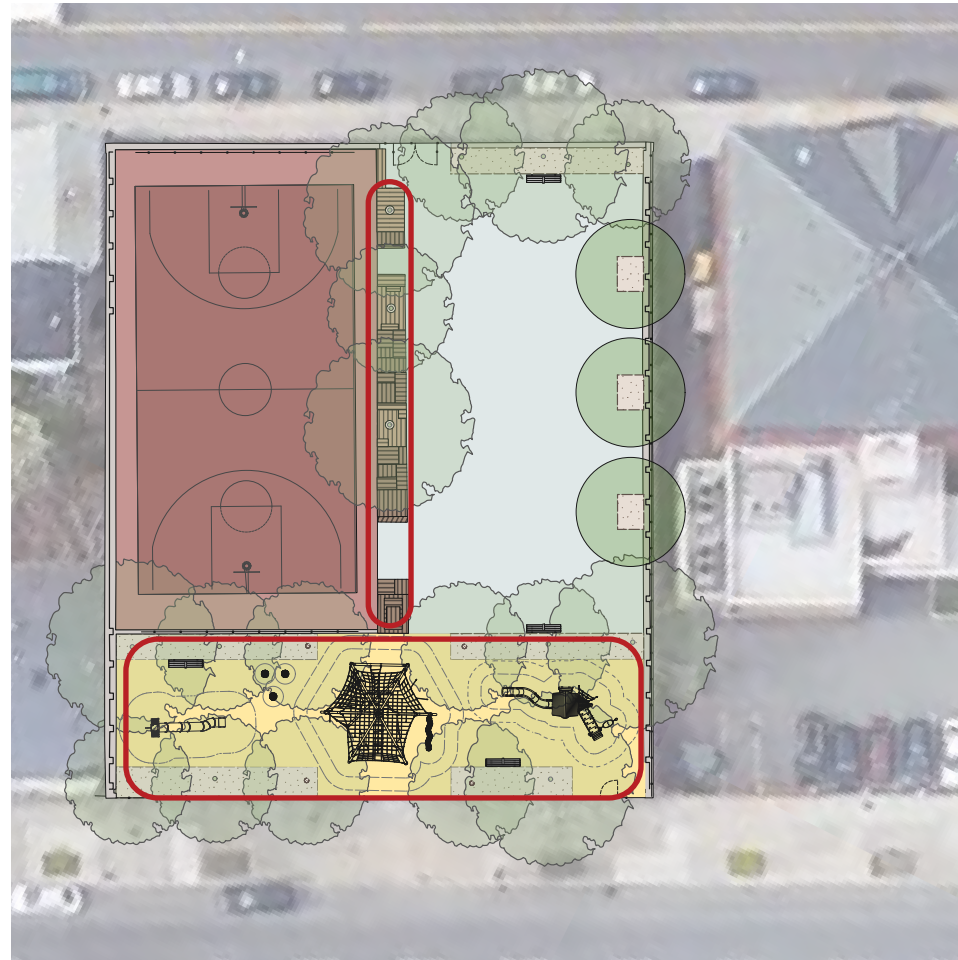
# REVIEW OF THREE PRIOR OPTIONS

## SCHEME 1



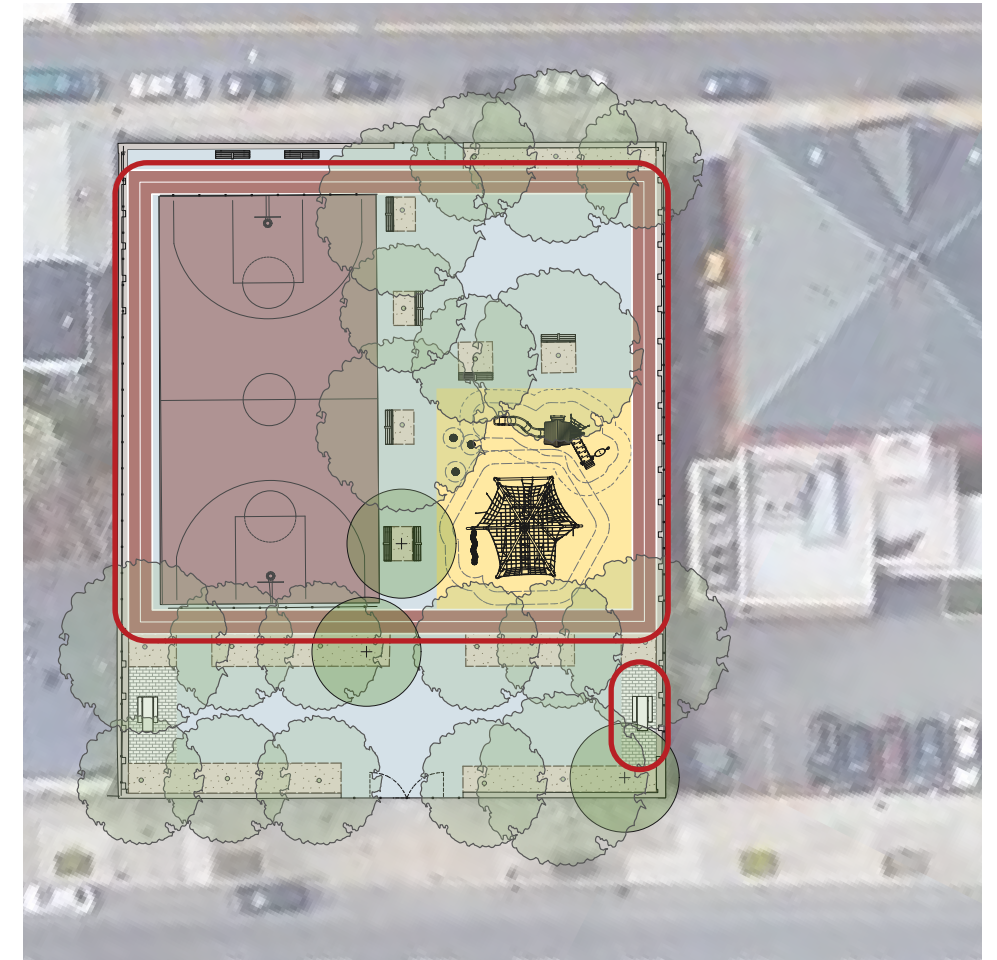
1. LARGE FLEXIBLE OPEN PLAY SPACE

## SCHEME 2



1. LONG LINEAR WOOD PLAY BENCH
2. PLAYGROUND SOUTHERN AREA

## SCHEME 3

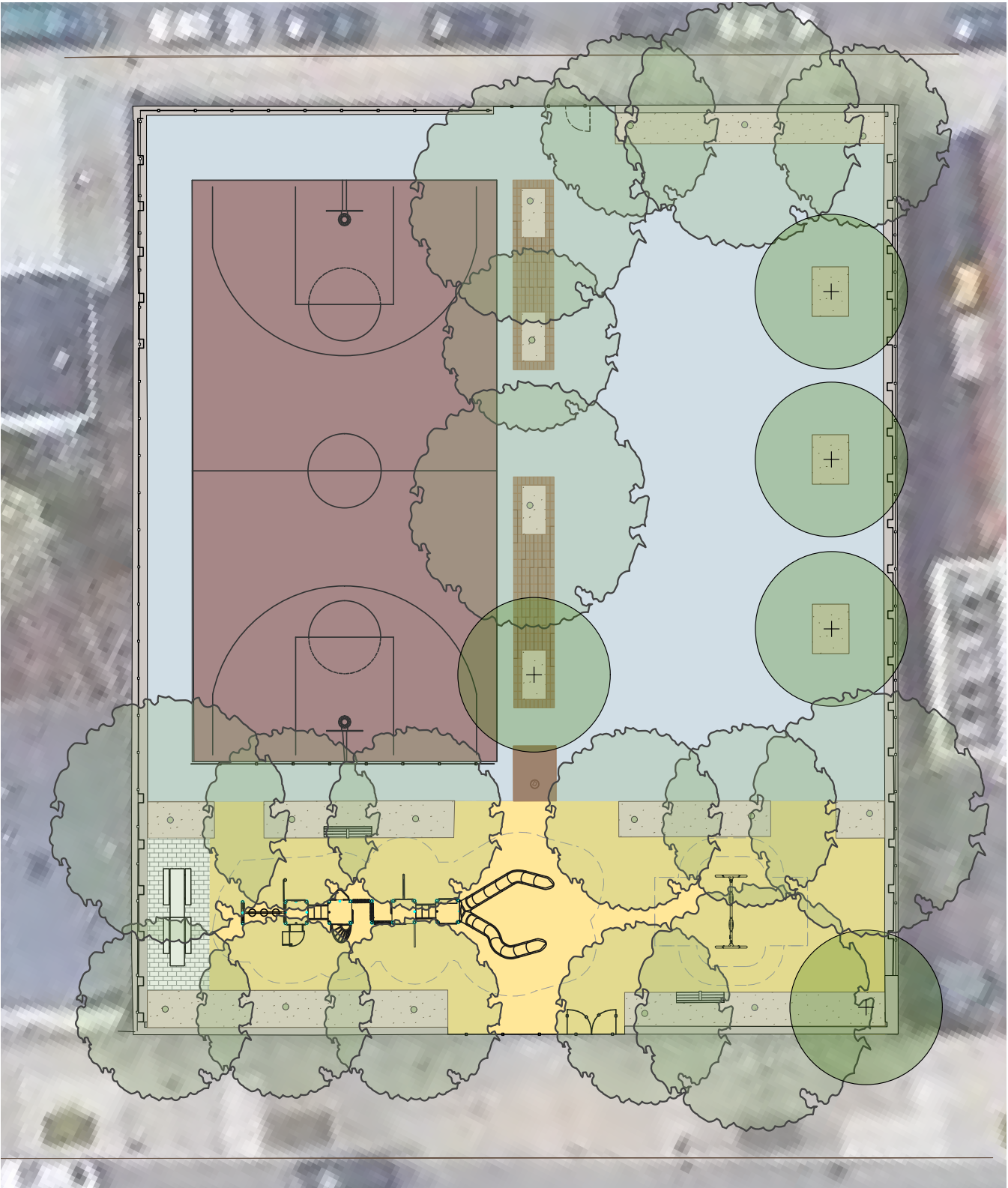
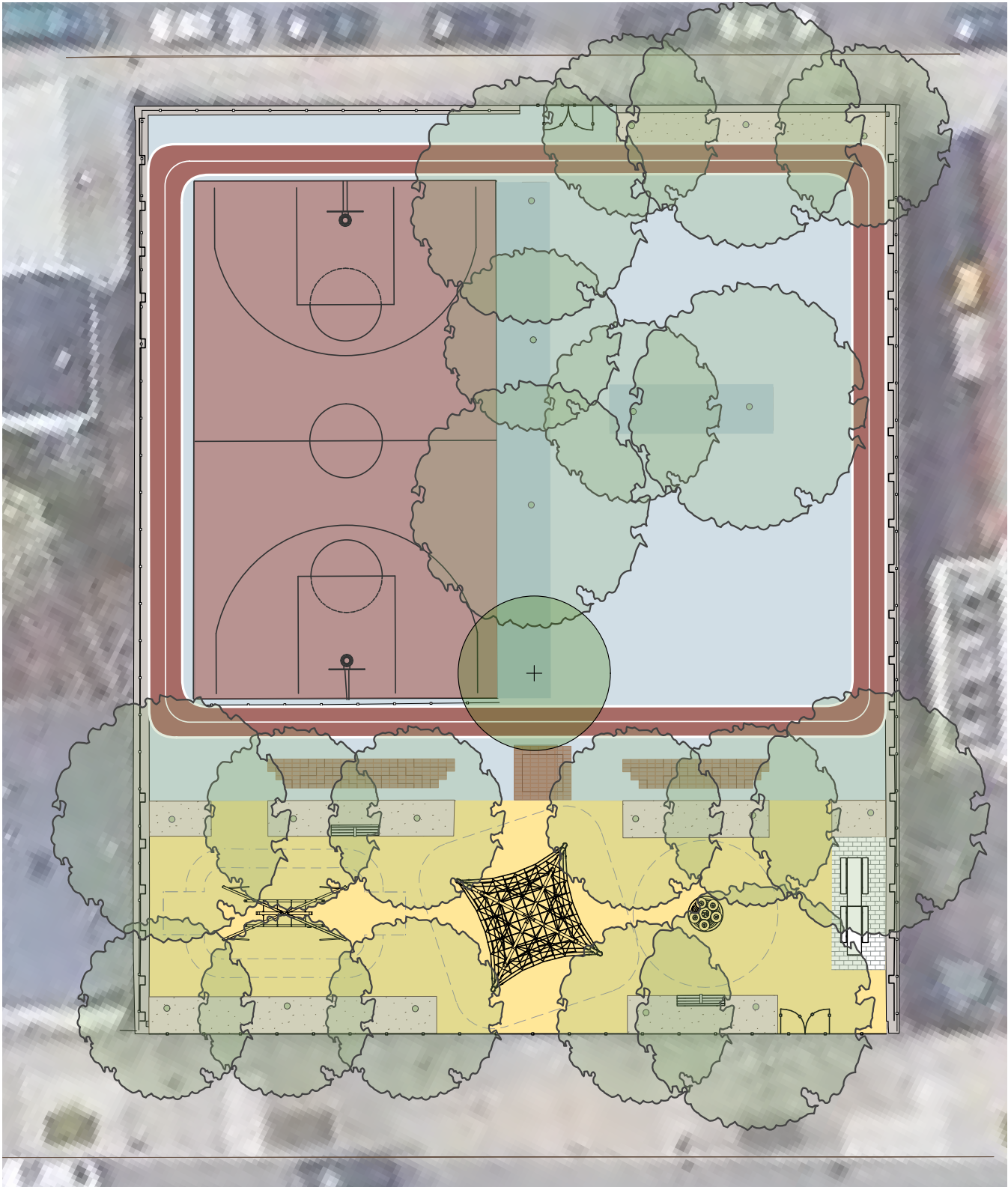


1. WALKING TRACK
2. PICNIC TABLE IN PLAYGROUND AREA



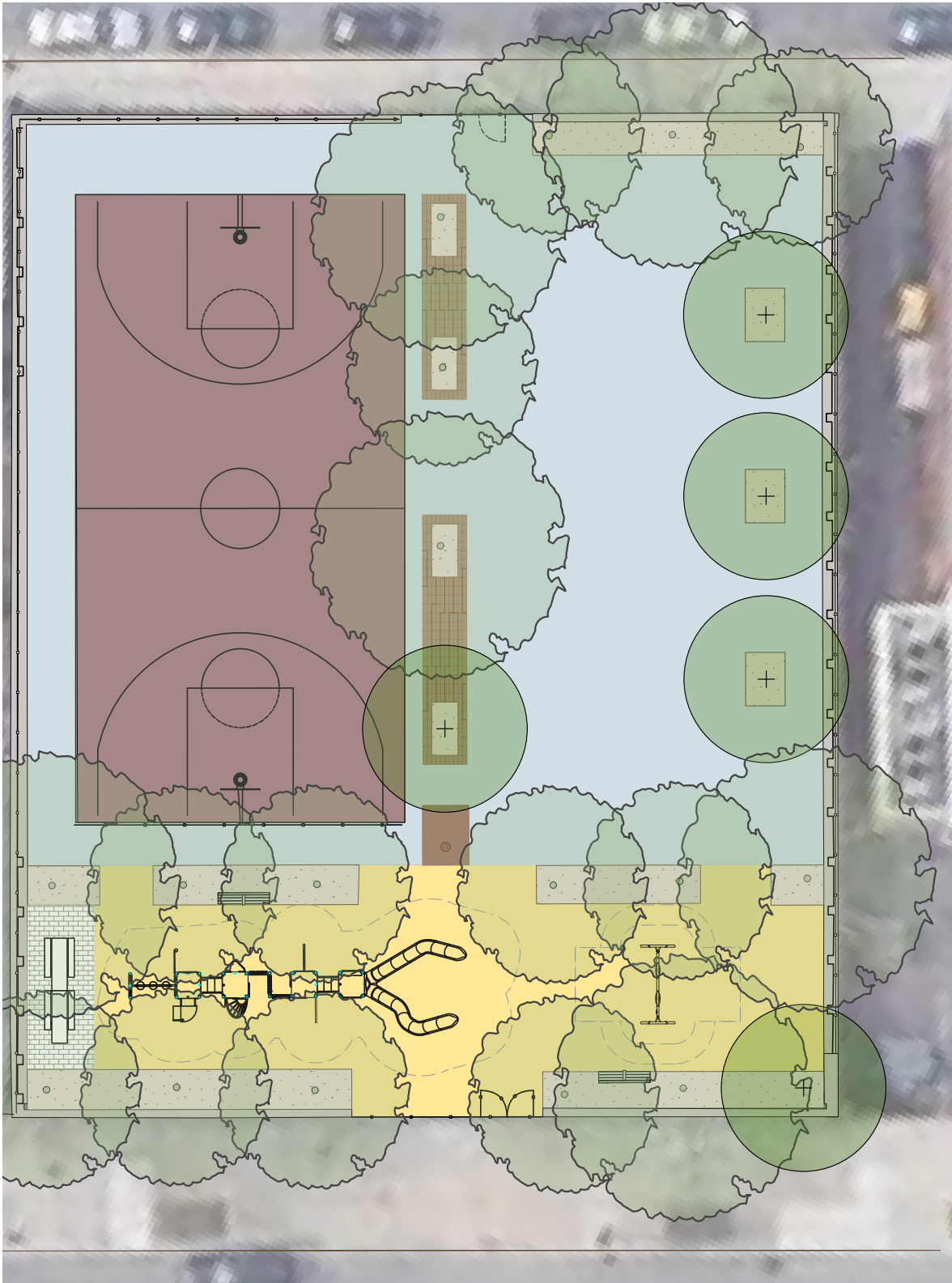
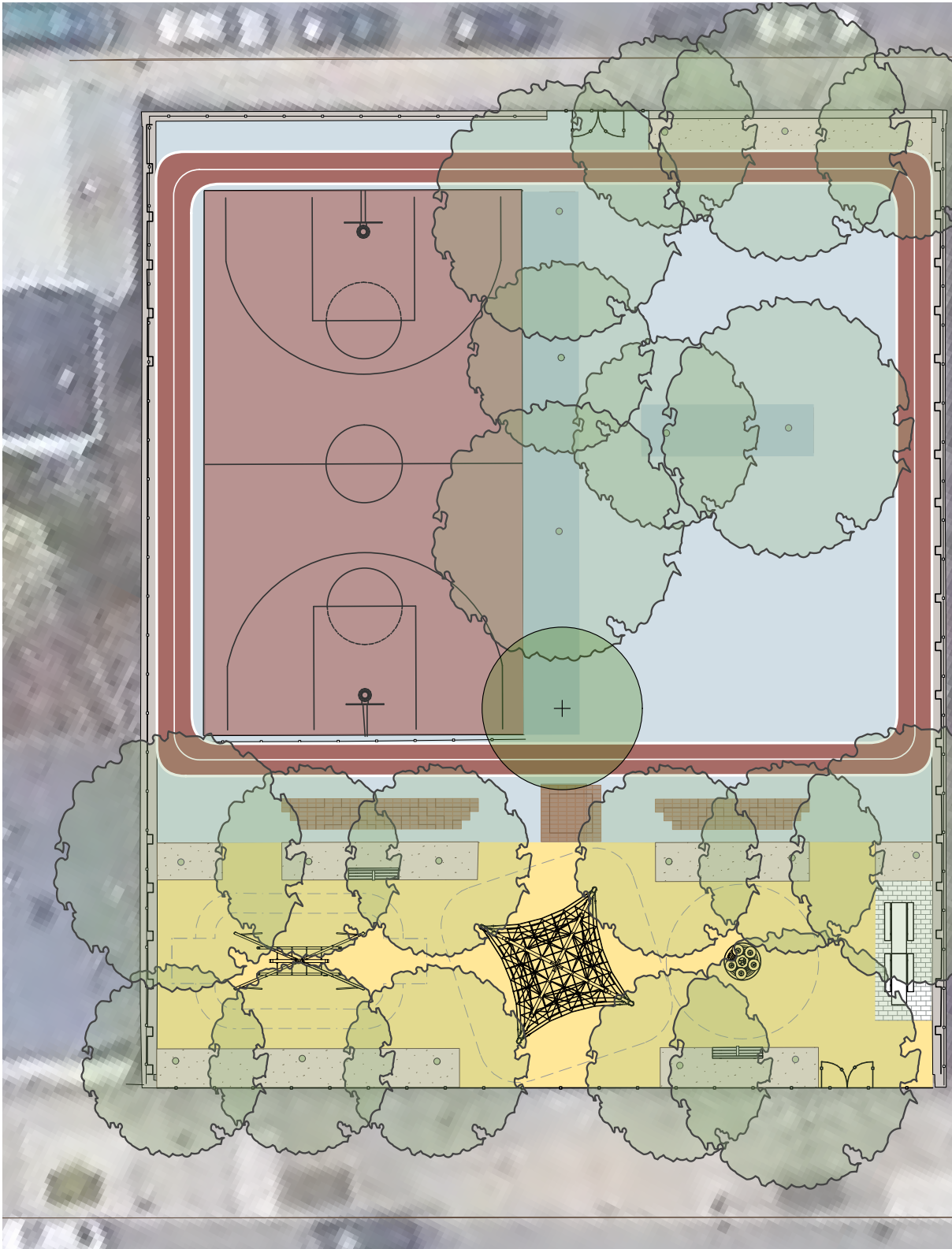


# VARIATIONS ON COMPOSITE PLAN





# VARIATIONS ON COMPOSITE PLAN





# SOUTHERN SIDE | BENNINGTON STREET

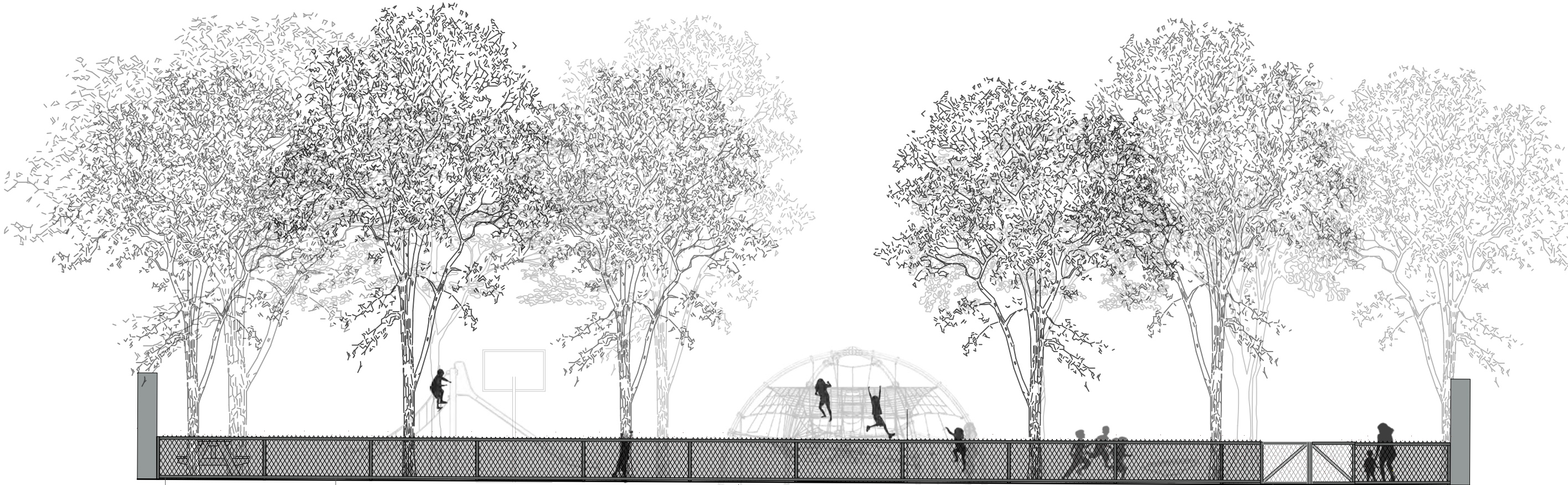
## EXISTING CONDITIONS





# SOUTHERN SIDE | BENNINGTON STREET

## PROPOSED CONDITIONS | OPTION 1



PICNIC AREA  
ADDED

WALL REMOVED AND  
FENCE INSTALLED

NOTE: NOT EXACT PLAY EQUIPMENT,  
JUST FOR ILLUSTRATIVE PURPOSES

DOUBLE GATE ON SIDE





# SOUTHERN SIDE | BENNINGTON STREET

## PROPOSED CONDITIONS | OPTION 2



WALL REMOVED AND FENCE INSTALLED

NOTE: NOT EXACT PLAY EQUIPMENT, JUST FOR ILLUSTRATIVE PURPOSES

DOUBLE GATE IN CENTER

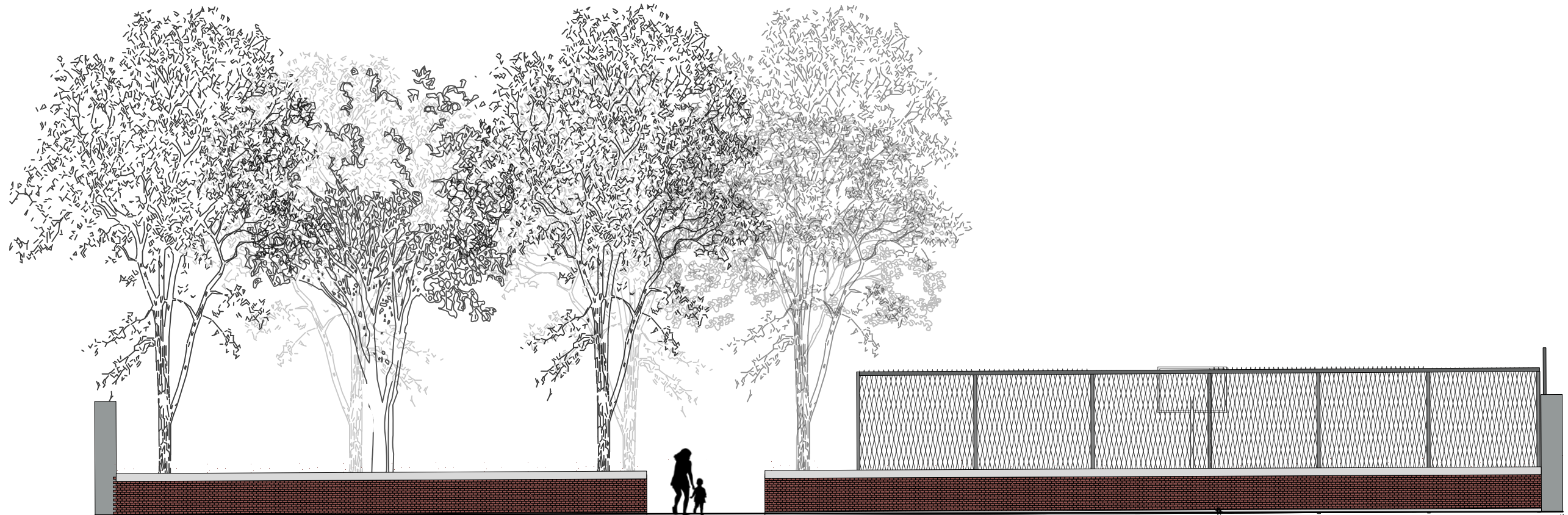
NEW TREE ADDED





# NORTHERN SIDE | SARATOGA STREET

## EXISTING CONDITIONS





# NORTHERN SIDE | SARATOGA STREET

## PROPOSED CONDITIONS | OPTION 1



SLIGHT ENLARGEMENT OF  
OPENING FOR SIGHT LINES

DOUBLE GATE

NEW FENCE ADDED TO  
TOP OF WALL





# NORTHERN SIDE | SARATOGA STREET

## PROPOSED CONDITIONS | OPTION 2



SLIGHT ENLARGEMENT OF  
OPENING FOR SIGHT LINES

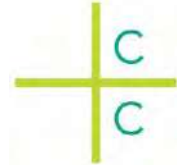
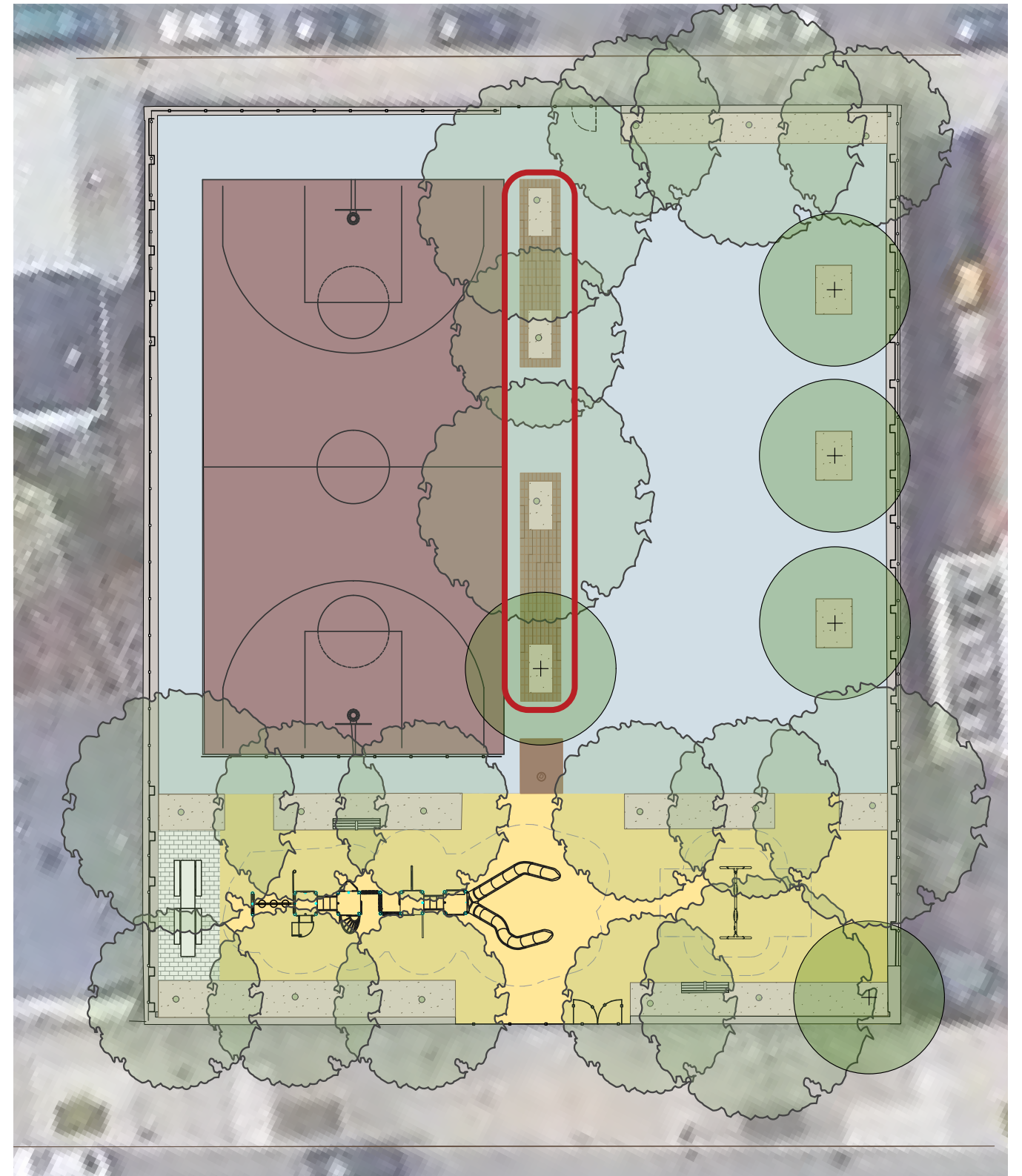
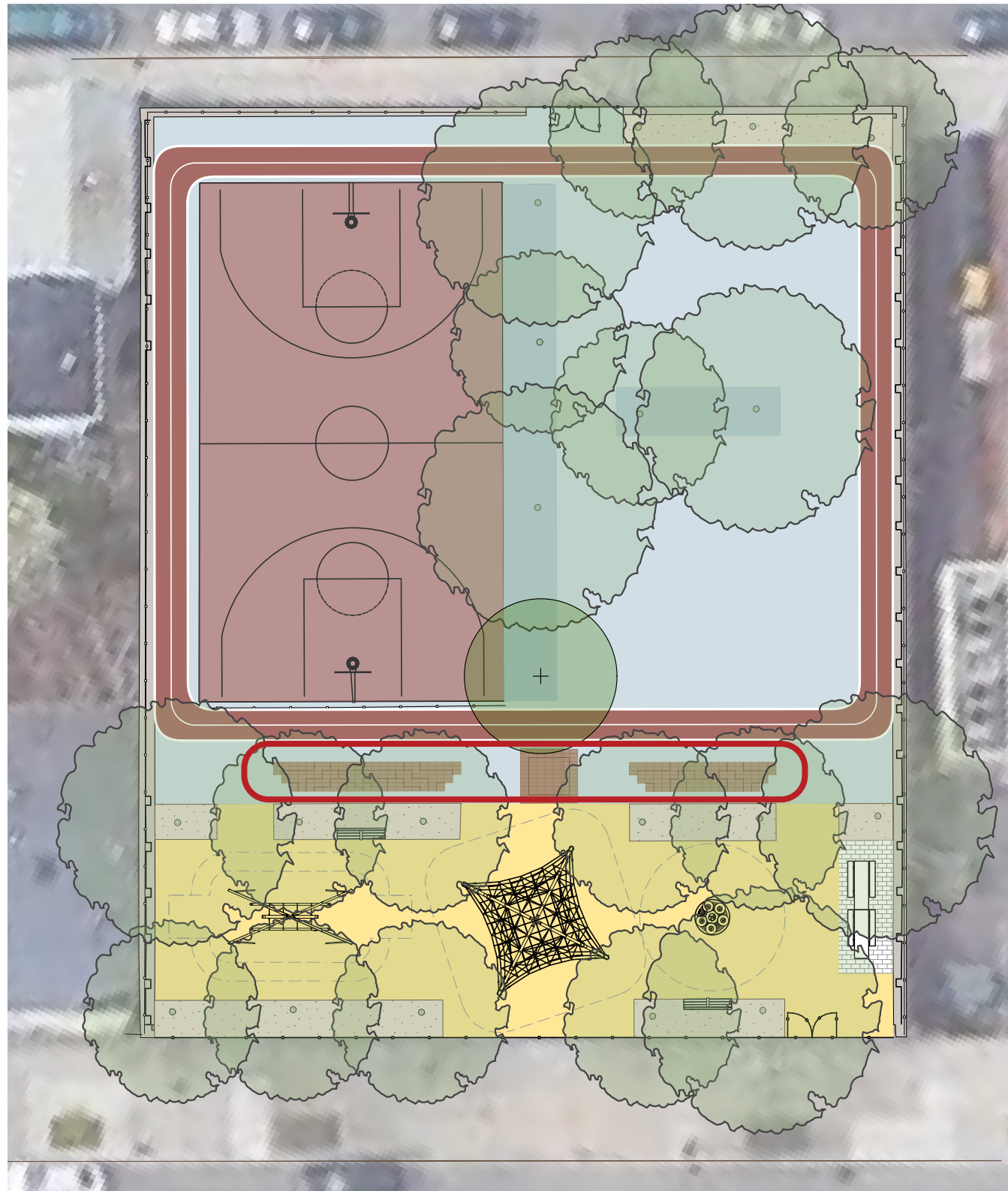
SINGLE GATE

NEW FENCE ADDED TO  
TOP OF WALL





# PLAYFUL BENCHES



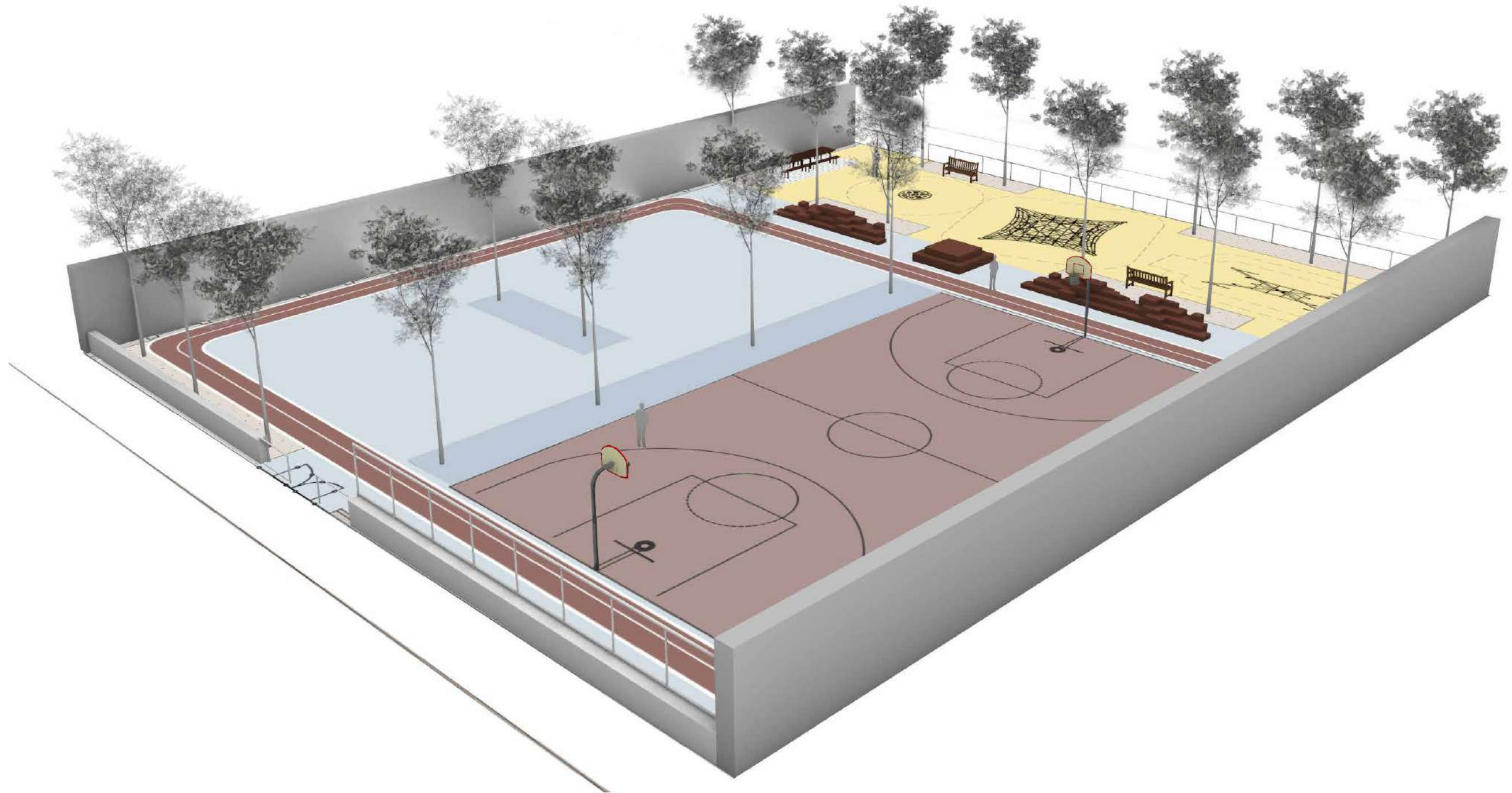


# BENCH PRECEDENT IMAGES





# OPTION 1 BENCH VIEWS





# OPTION 1 BENCH VIEWS





# OPTION 2 BENCH VIEWS





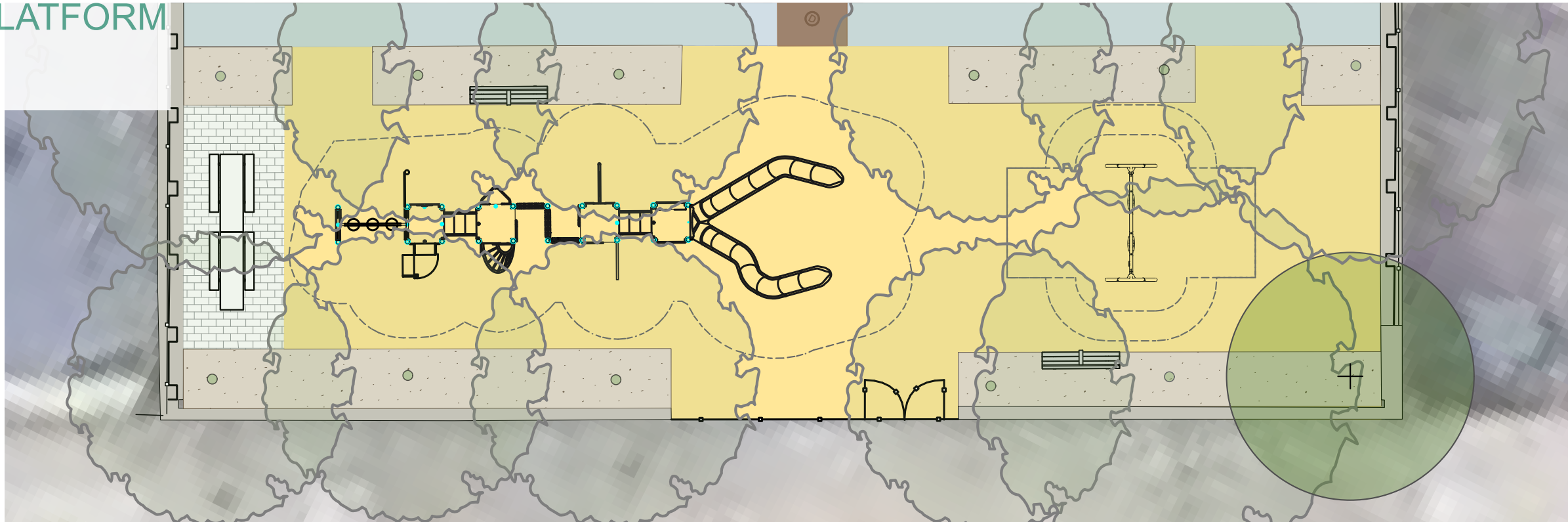
# OPTION 2 BENCH VIEWS



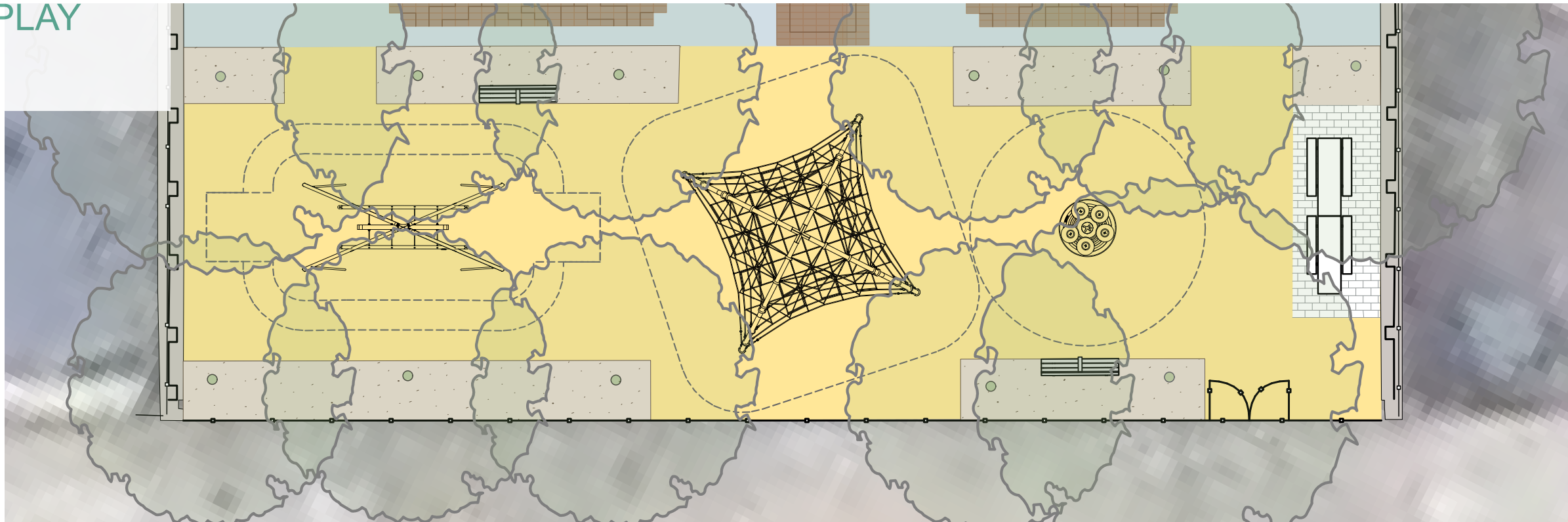


# PLAYGROUND EQUIPMENT

POST AND PLATFORM SYSTEM

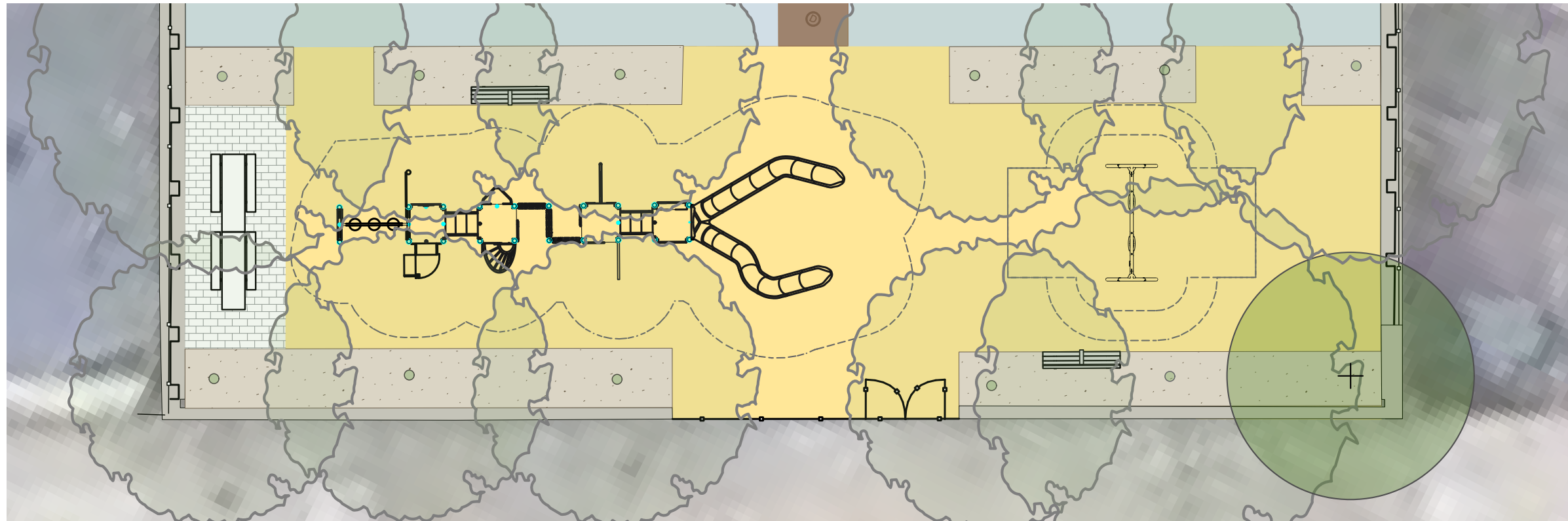


INDIVIDUAL PLAY EQUIPMENT



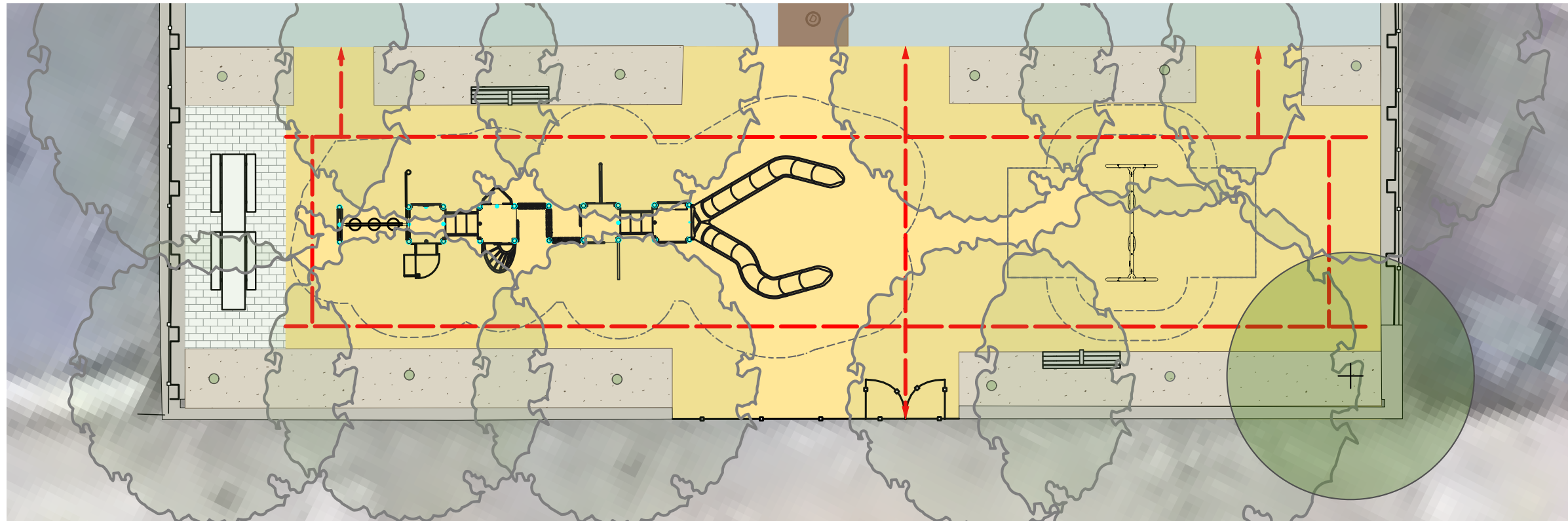


# POST AND PLATFORM SYSTEM



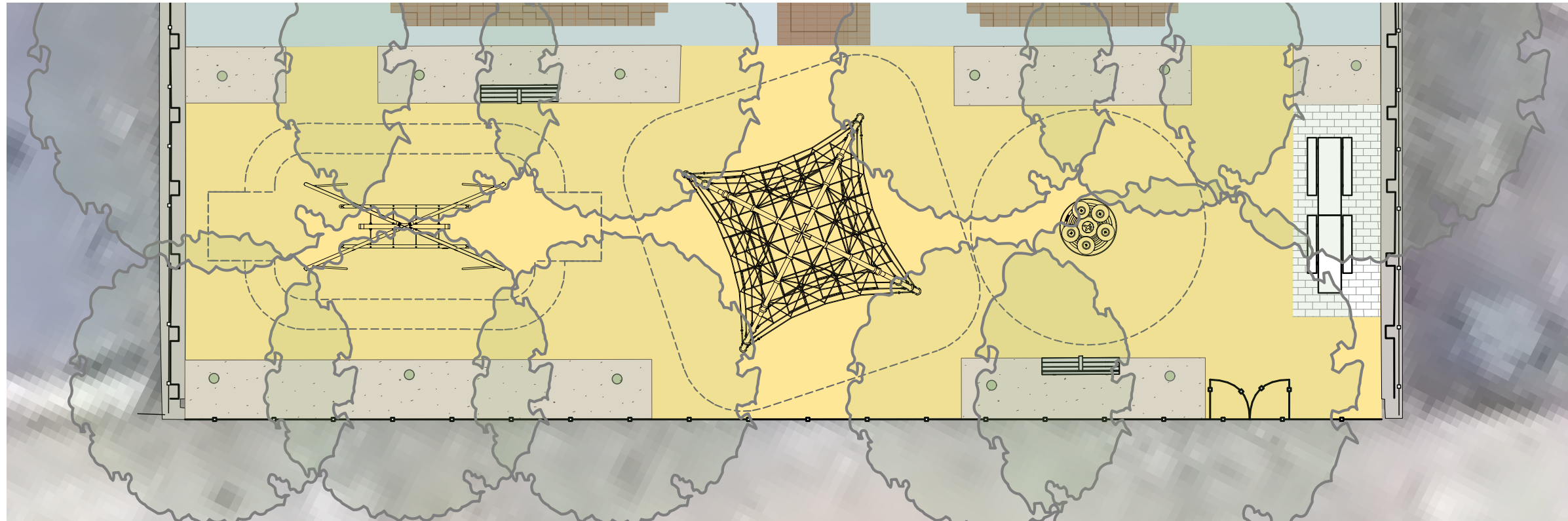


# POST AND PLATFORM SYSTEM



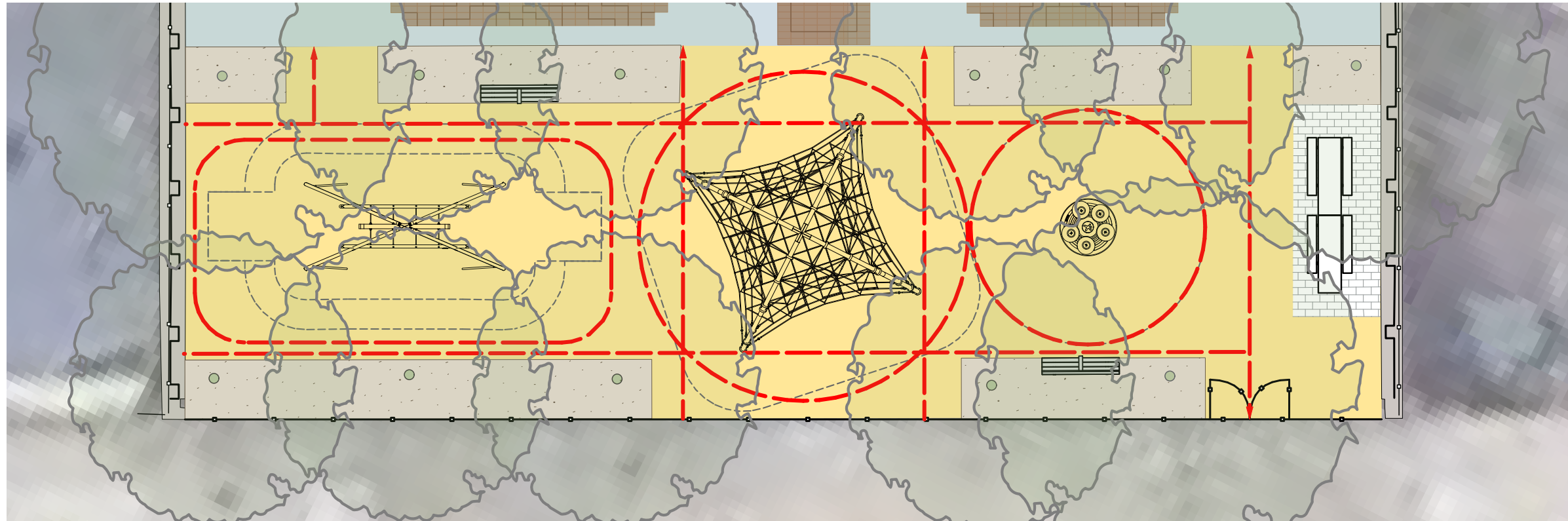


# INDIVIDUAL PLAY EQUIPMENT



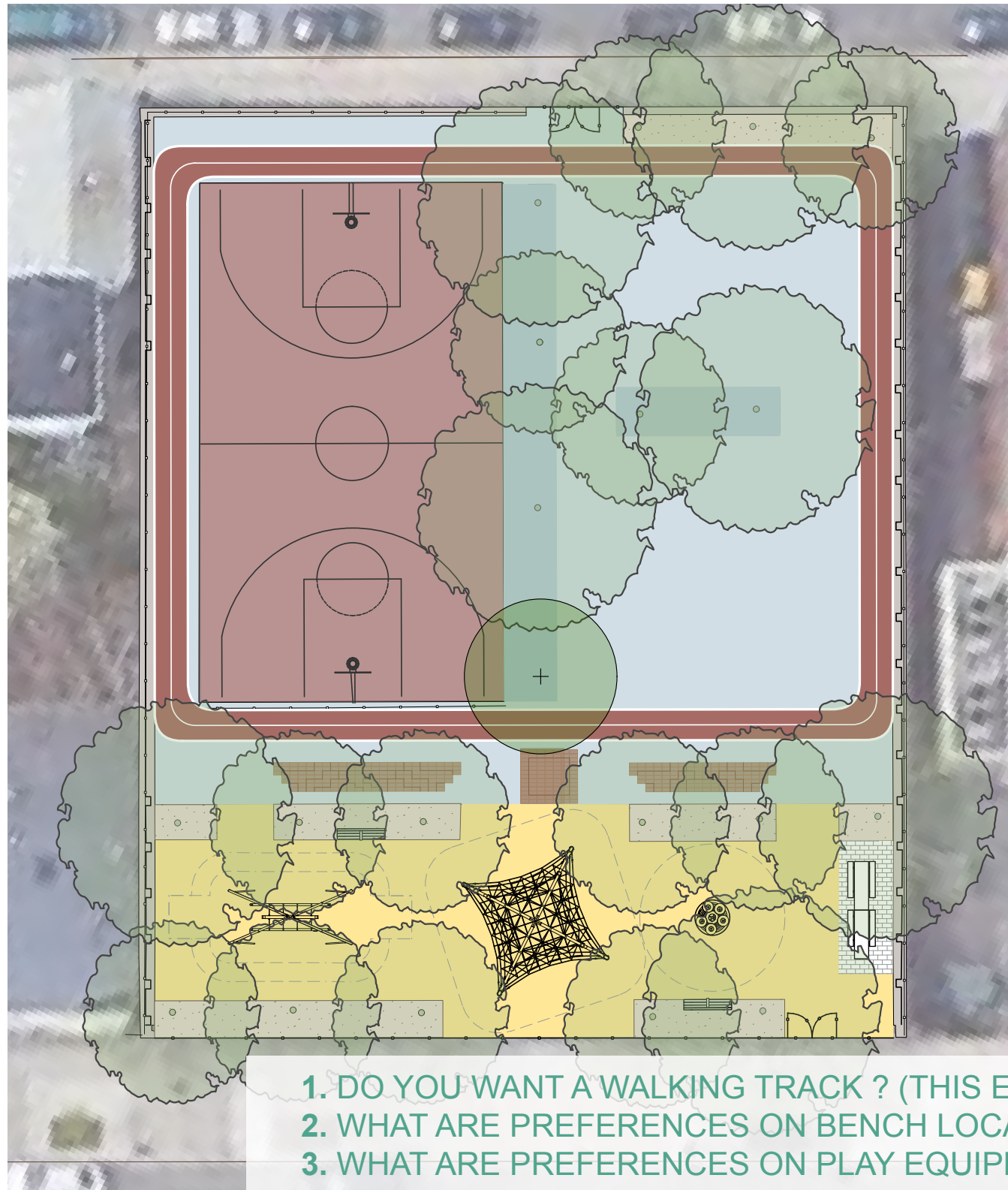


# INDIVIDUAL PLAY EQUIPMENT

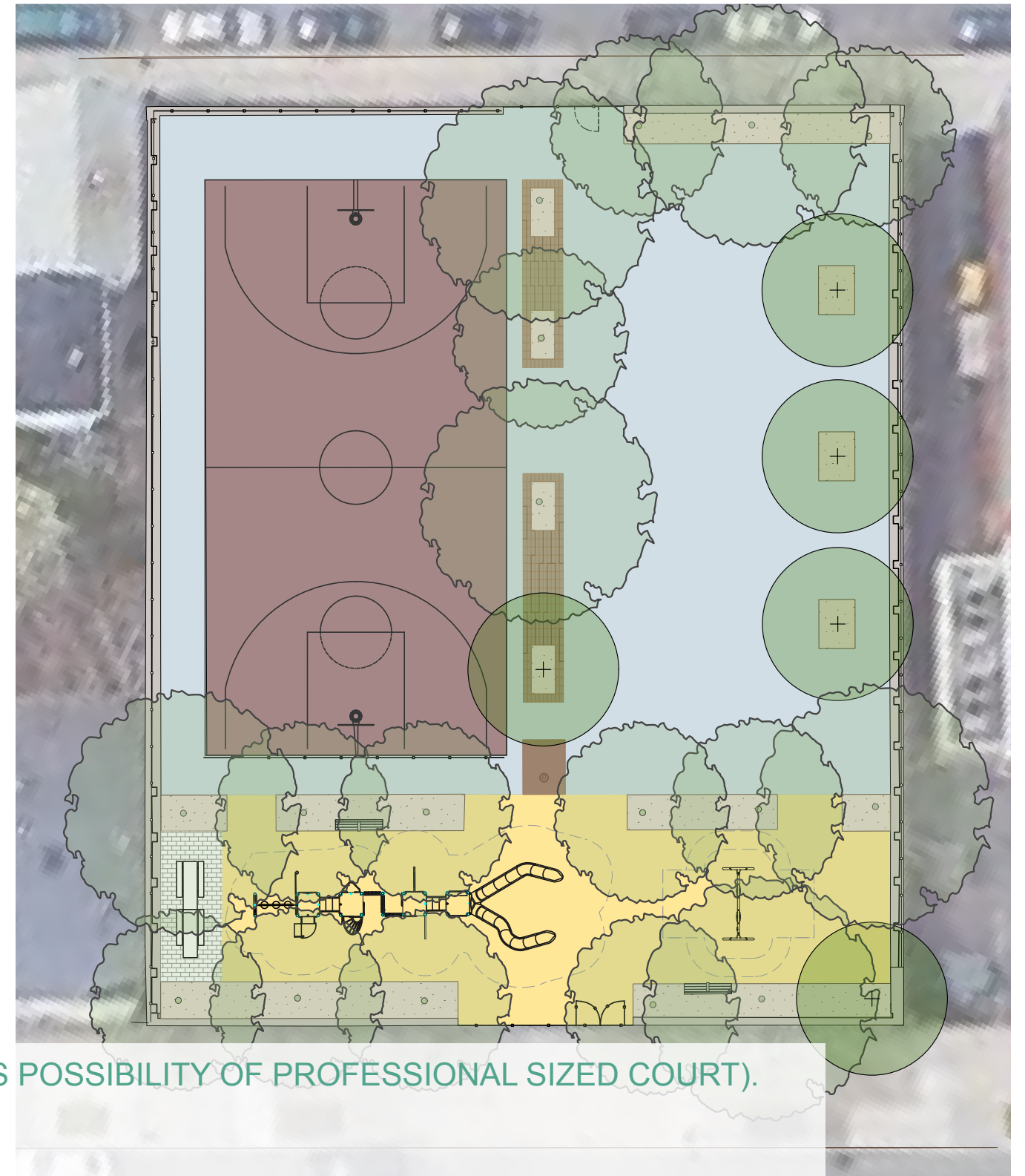




# FEEDBACK AND QUESTIONS



1. DO YOU WANT A WALKING TRACK ? (THIS EXCLUDES POSSIBILITY OF PROFESSIONAL SIZED COURT).
2. WHAT ARE PREFERENCES ON BENCH LOCATION?
3. WHAT ARE PREFERENCES ON PLAY EQUIPMENT?





# THANK YOU

**Boston Parks Website:** <https://www.boston.gov/improvements-mclean-playground>



**McLean Park**  
Community Feedback  
March, 2023