

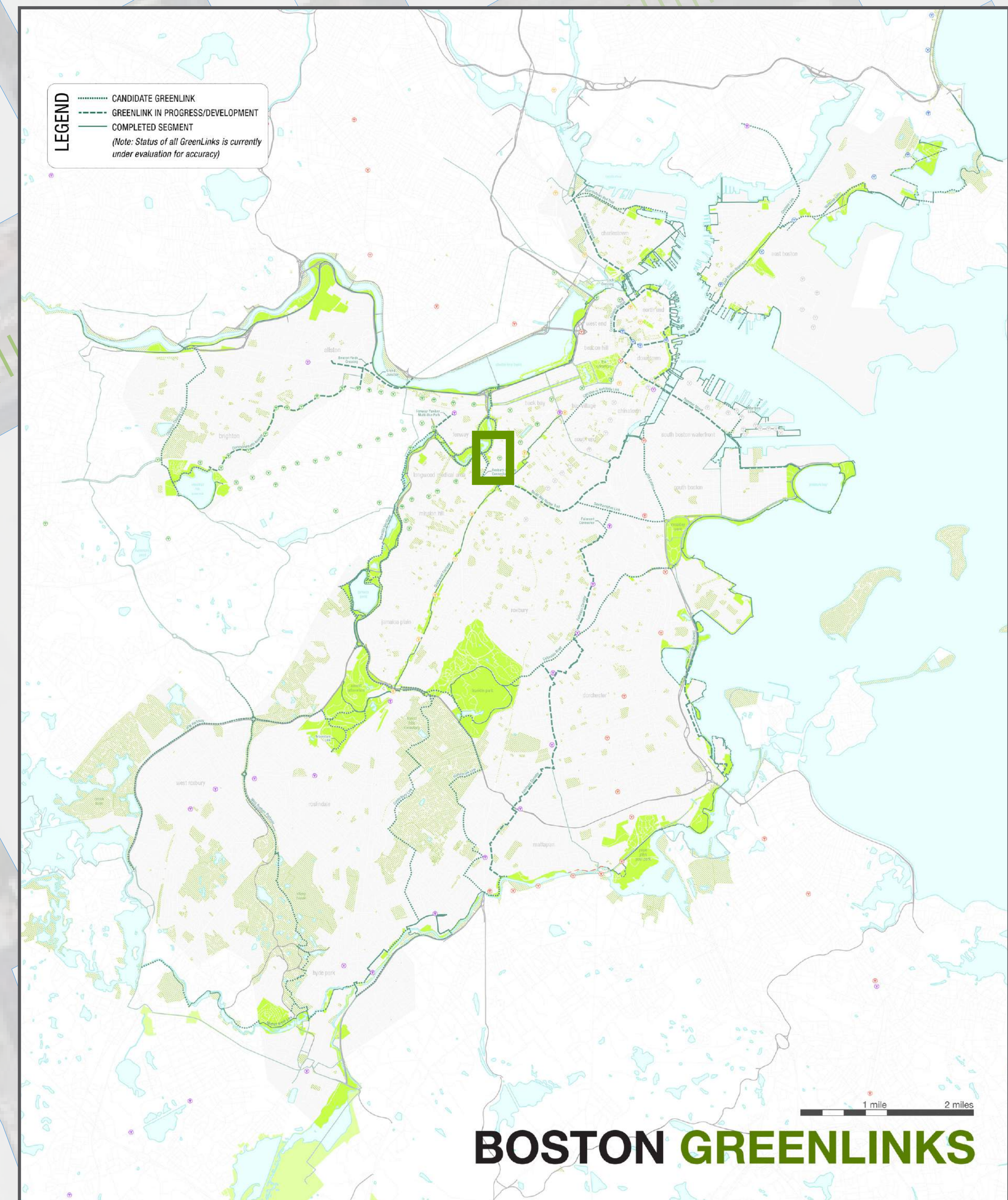


Boston Green Links Roxbury-Fenway Connector

Direct connection to the Fenway and the Emerald Necklace

What is a "Green Link"?

Green Links are missing bike and pedestrian connections that, when completed, will create a seamless network of greenway paths called the "Emerald Network". Green Links include off-road paths, protected bike lanes, safer road crossings, and low-traffic streets also known as "neighborways".



Museum of Fine Arts

Additional crosswalk at Huntington Ave

The Roxbury to Fenway Connector is a proposed Green Link that would include a path within the existing double row of trees on Ruggles Street between Ruggles Station and Parker Street.

Wentworth Institute of Technology

Two-way cycle track on the east side of Parker St

Northeastern University



View of proposed off-street shared use path along Ruggles St
(Image Credit: Lawrence and Lillian Solomon Foundation and NBBJ)

Off-street shared-use path along Ruggles St

Direct connection to the Ruggles T Station and the Southwest Corridor Park



boston.gov/transportation/boston-green-links
app01.cityofboston.gov/GreenLinks/

