

HARAMBEE PARK PHASE 4

DOG PARK & PUMP TRACK FEASIBILITY STUDY



PUBLIC MEETING # 3
April 26, 2023



City of Boston
Parks and Recreation



DESIGN STUDIO

MEETING RECORDING



The Boston Parks and Recreation Department will be recording the meeting and posting to our project webpage for those who are unable to attend the Zoom meeting live.

It is possible that participants may also be recording the meeting with their phones cameras or other devices. If you do not wish to be recorded during this meeting, please keep your microphone and camera off.

VIRTUAL MEETING ETIQUETTE

We want to ensure this conversation feels accessible to everyone and each one of you feels comfortable sharing your questions and comments.

Please be respectful and mindful of other's time when asking questions/ providing comments, so that all attendees are able to participate in the meeting.

Keep questions/ comments project-specific and not personal to yield a solution driven discussion.

You can always set up a conversation with Amy Linné, amy.linne@boston.gov to further discuss the project or process.

ZOOM TIPS

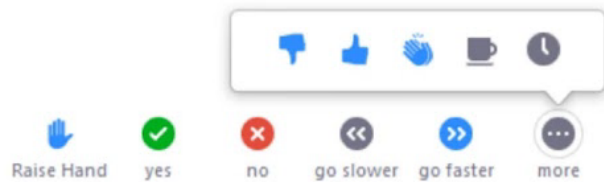
Here is how you can participate during the question and answer part of the presentation.

DURING THE PRESENTATION:



VIA WEB:

Turn video on / off.



To use these non-verbal options click on participants (bottom of screen); these options will pop up in side bar.

DURING THE Q&A:



JOINING VIA PHONE?

Use *9 to raise hand to ask for audio / video permission to ask questions or provide comments.



VIA WEB:

Chat to ask questions / comments or provide responses to poll questions



Raise hand to ask for audio / video permission to ask questions or provide comments.

HARAMBEE PARK PHASE 4

MEETING AGENDA

1

PROJECT TEAM INTRODUCTION

2

PROJECT OVERVIEW

3

PRESENTATION

4

LISTENING & DISCUSSION

5

CLOSING REMARKS & NEXT STEPS

HARAMBEE PARK PHASE 4

PROJECT TEAM

Amy Linné

Project Manager, BPRD

amy.linne@boston.gov

Eric James

Office of Neighborhood Services

eric.james@boston.gov

Amanda Gaal

Project Manager, Weston & Sampson

Tongyi Zhang

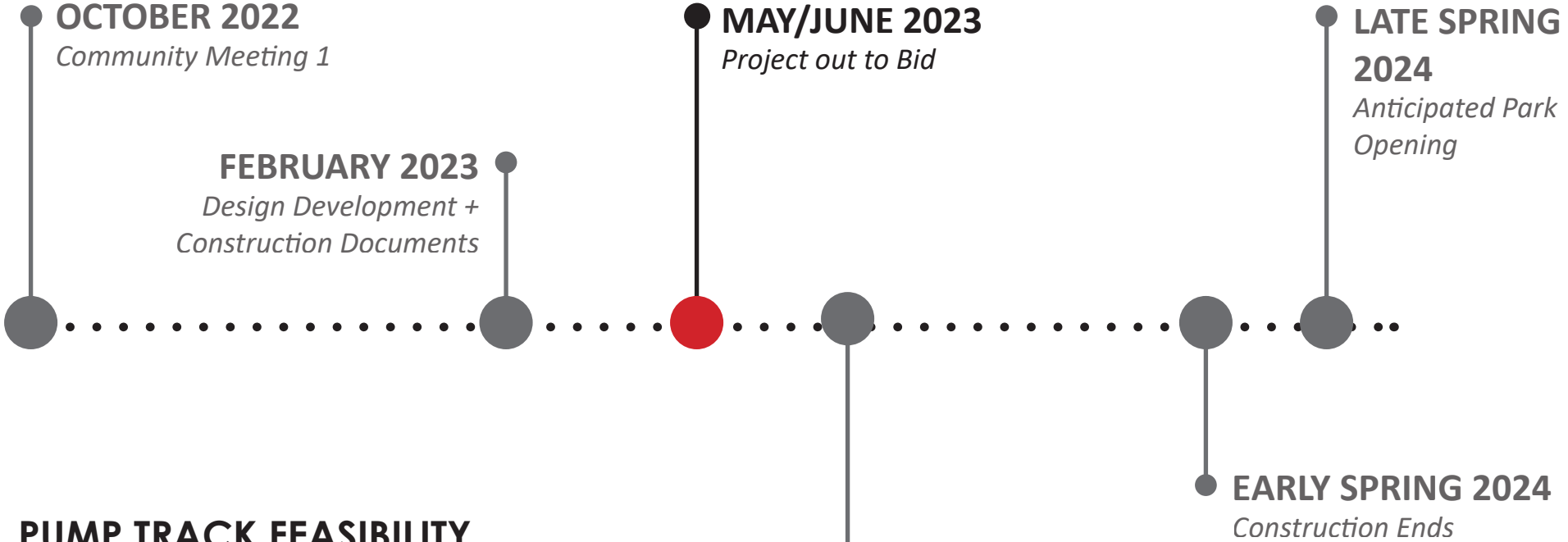
Landscape Designer, Weston & Sampson



HARAMBEE PARK PHASE 4

PROJECT SCHEDULE + FUNDING

CRICKET FIELDS



PUMP TRACK FEASIBILITY



HARAMBEE PARK PHASE 4

PROJECT APPROACH



HARAMBEE PARK PHASE 4

CITY OF BOSTON PRIORITIES

- Expanding walkable access to parks
- Addressing equity
- Climate resilience
- Health
- Housing and community building



HARAMBEE PARK PHASE 4

PARKS AND RECREATION GOALS

- Accessible and available to all
- Diverse, balanced, and efficient mix of uses
- Meaningful and inclusive community engagement
- Adaptive and resilient landscapes
- Promote connections



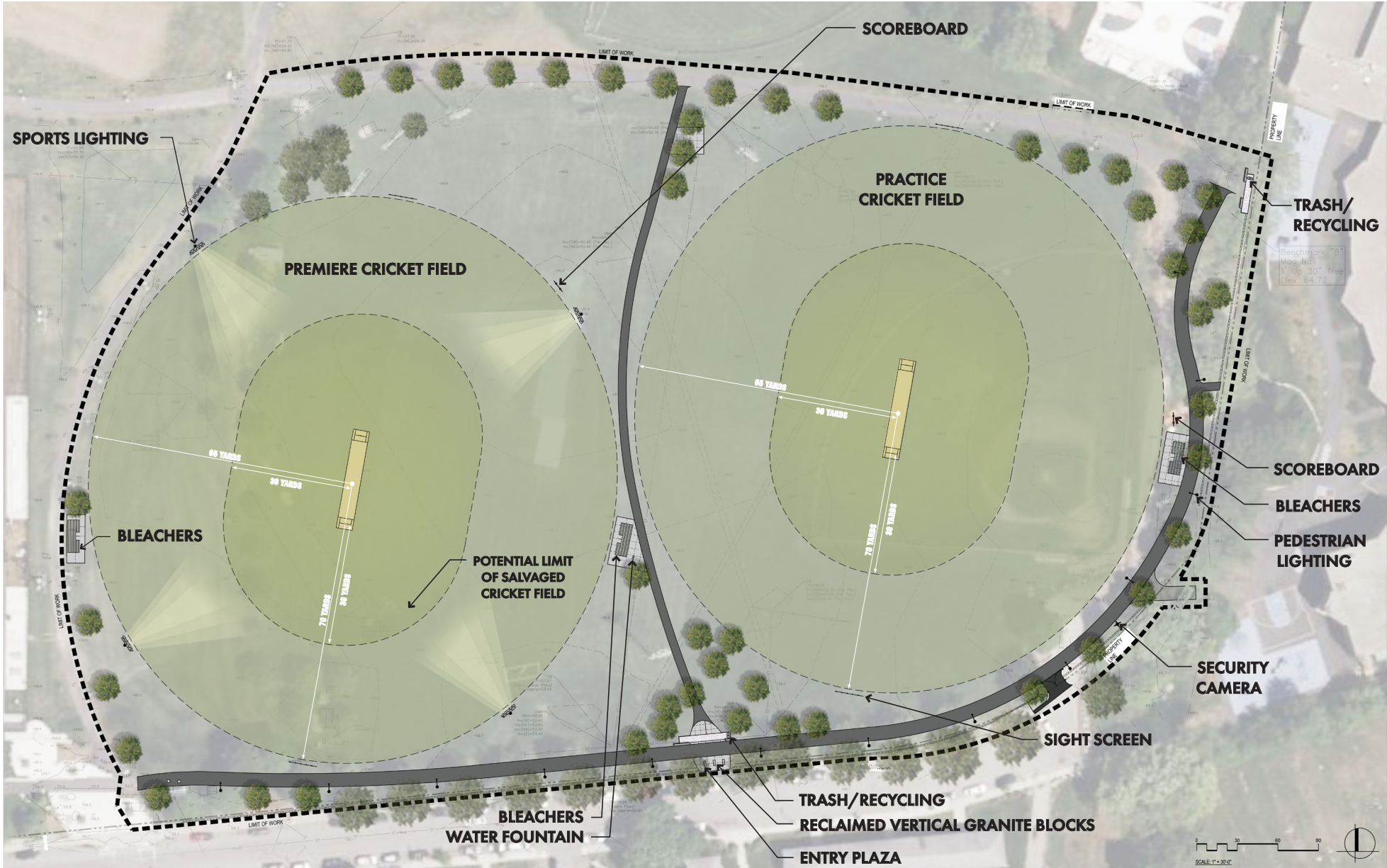
HARAMBEE PARK PHASE 4

HARAMBEE PARK MASTER PLAN REVIEW



HARAMBEE PARK PHASE 4

PHASE 4 UPDATED DESIGN CONCEPT



CONCEPT PLAN

HARAMBEE PARK PHASE 4

EXISTING DOG PARKS AND PUMP TRACK IN BOSTON



HARAMBEE PARK PHASE 4

DOG PARK PRECEDENTS



DEFILIPPO DOG PARK
NORTH END (8,300 sf)



RONAN DOG PARK,
DORCHESTER (6,400 sf)



PETERS PARK,
SOUTH END (14,000 sf)

DOG PARK AMENITIES



DOGGIE BAG
DISPENSER / TRASH BIN



DOG DRINKING FOUNTAIN
+ HOSE BIB



RICE STONE SURFACING



SEATING

HARAMBEE PARK PHASE 4

PUMP TRACK PRECEDENTS



SMITH PLAYGROUND
ALLSTON, MA (8,400 sf)



CREEDSIDE PARK,
PENNSYLVANIA (9,100 sf)



EARL THOMAS CONLEY PARK,
OHIO (9700 sf)

HARAMBEE PARK PHASE 4

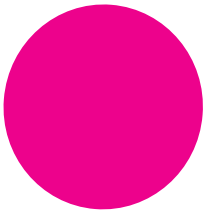
DOG PARK / PUMP TRACK FEASIBILITY

DOG PARK RECOMMENDATIONS:

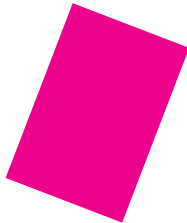
- 10,000 SF minimum size
- Fenced
- Relatively flat

PUMP TRACK RECOMMENDATIONS:

- 5000 SF minimum
- 10000 SF for “competition” track



CRICKET FIELD
(130,000 sf)



SOCCER FIELD
(74,000 sf)



FOOTBALL FIELD
(72,500 sf)



BASEBALL FIELD
(39,000 sf)



APPX. PUMP
TRACK SIZE
(10,000 sf)



APPX. DOG
PARK SIZE
(10,000 sf)

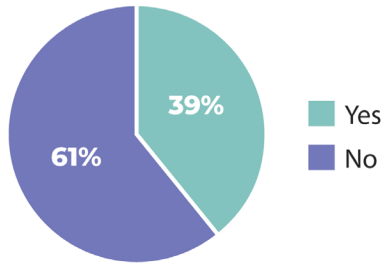
HARAMBEE PARK PHASE 4

Survey Responses

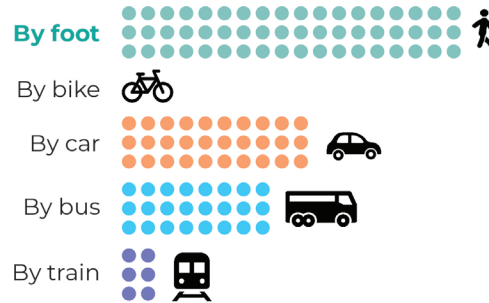
January - April 2023

33 Responses

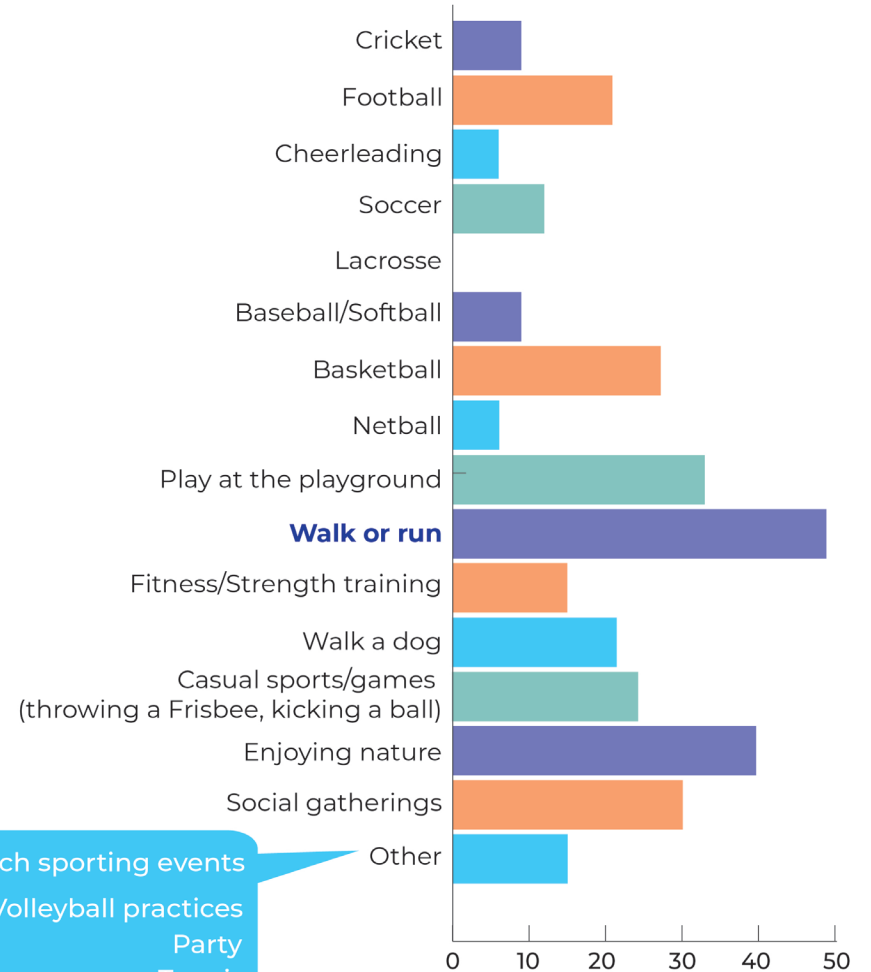
Have you attended previous community meetings for Harambee Park?



How do you typically get to Harambee Park?

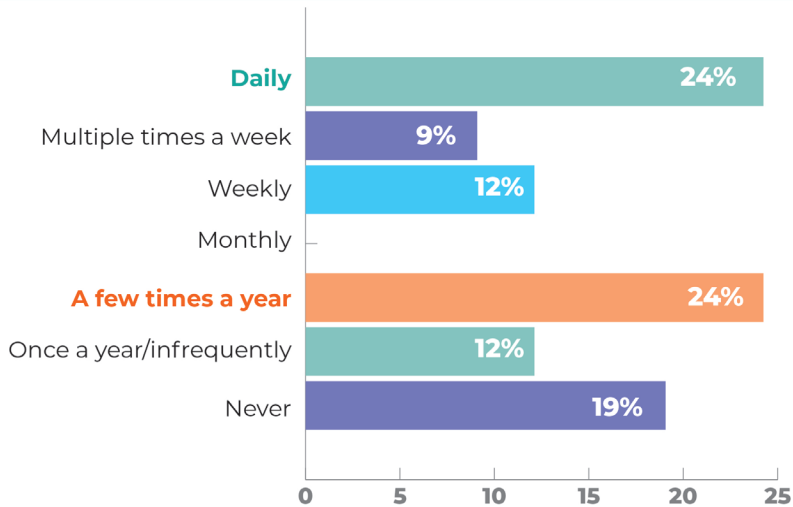


What do you typically do at Harambee Park? Select the sport(s) from the list below that you play, watch or bring someone else to play. Choose all that apply.



Watch sporting events
Volleyball practices
Party
Tennis

How often do you visit Harambee Park?



HARAMBEE PARK PHASE 4

Survey Responses

Comments for a Pump Track

“It will give kids an additional place to play.”

Better and Safer for Kids

“It may be useful for children learning to ride bikes or skateboards.”

“A lot of teens like to skate and bike which could be cool.”

“Great addition to encourage physical activity.”

That Would be Cool

“I always wanted a pump track close to me.”

“I don’t bike to harambee so it doesn’t affect me at all.”

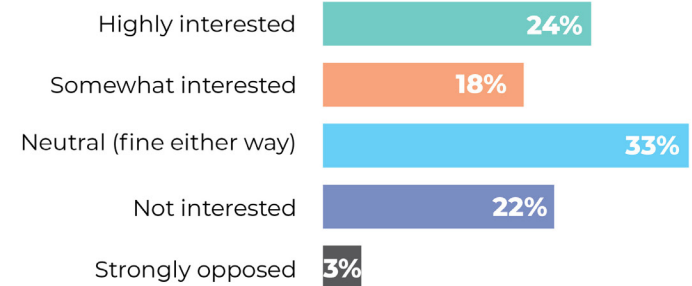
Not Interested

“I want the skatepark.”

Safety Concerns

“Concerned about motor bikes on the track since motor bikes are a real problem at Harambee Park.”

Interest Level for a Pump Track



“It’s for Biker and Skateboarder Specifically”

Fine Either Way

“Just not sure it fits the needs of the current community.”

“There may be a better use for resources.”

HARAMBEE PARK PHASE 4

Survey Responses

Comments for a dog park

“There are no dog parks nearby and dogs are plentiful in this neighborhood.”

We Need It! We Want It!

“Desperately need one in this area of the city. The number of dogs has increased dramatically in the past 5-6 years.”

I Can Help Maintain

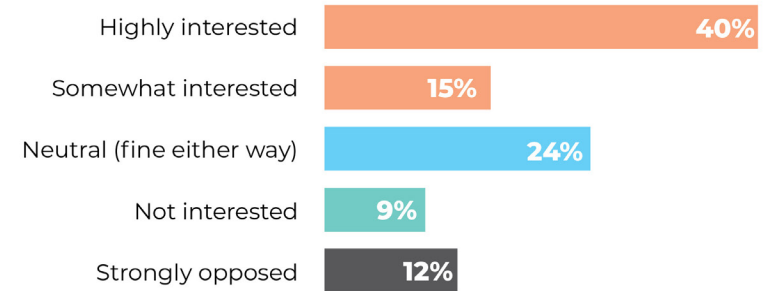
“I am personally interested in building a grassroots community program to help maintain the dog park.”

“Very concerned about how this will be kept clean and safe.”

Maintenance Concern

“How are the enforcements going to be implemented in keeping the areas cleaned up Safety of others?”

Interest Level for a Dog Park



“I don’t own a dog so I don’t need it.”

No Need

“We have had too many issues at Harambee to now include irresponsible dog owners.”

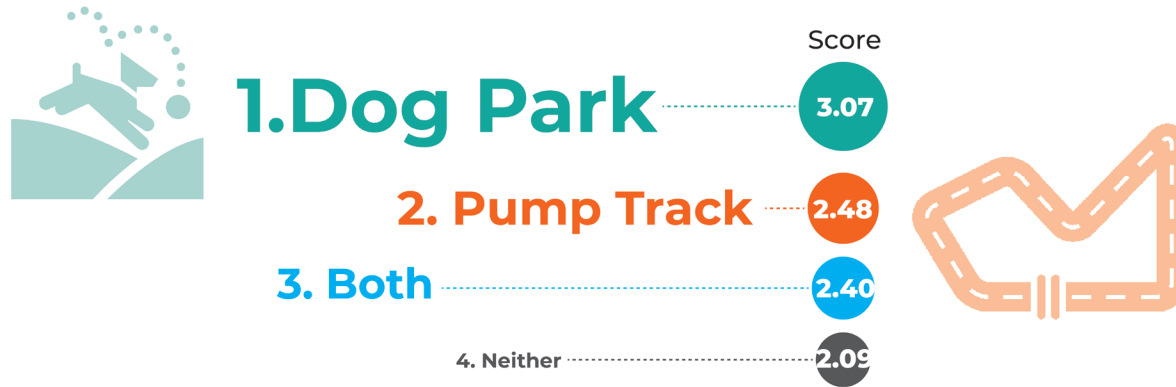
Not Sure

“Depends on the proposed location within the park.”

HARAMBEE PARK PHASE 4

Survey Responses

Please rank your preference for these options (1=highest priority, 4=lowest priority)



Is there any additional comments or suggestions?

DRAINAGE ISSUES

"The football fields don't drain and the fields are always soak the day after it rains."

"The fields are rendered useless after a rain."

MAINTENANCE & VEHICLE ACCESS

"So much misuse."

"Broken glass is everywhere."

"People drive their cars all over the grass."

"Please enforce littering and cars."

OTHER

"A track?"

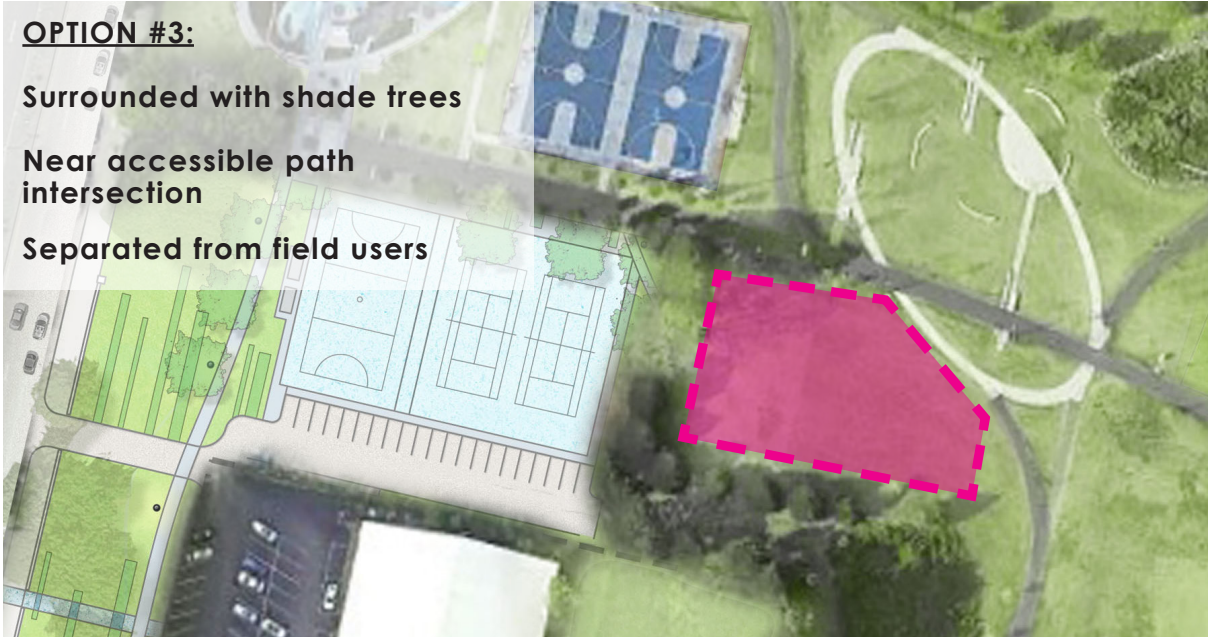
HARAMBEE PARK PHASE 4

POTENTIAL DOG PARK LOCATION



HARAMBEE PARK PHASE 4

POTENTIAL DOG PARK LOCATION



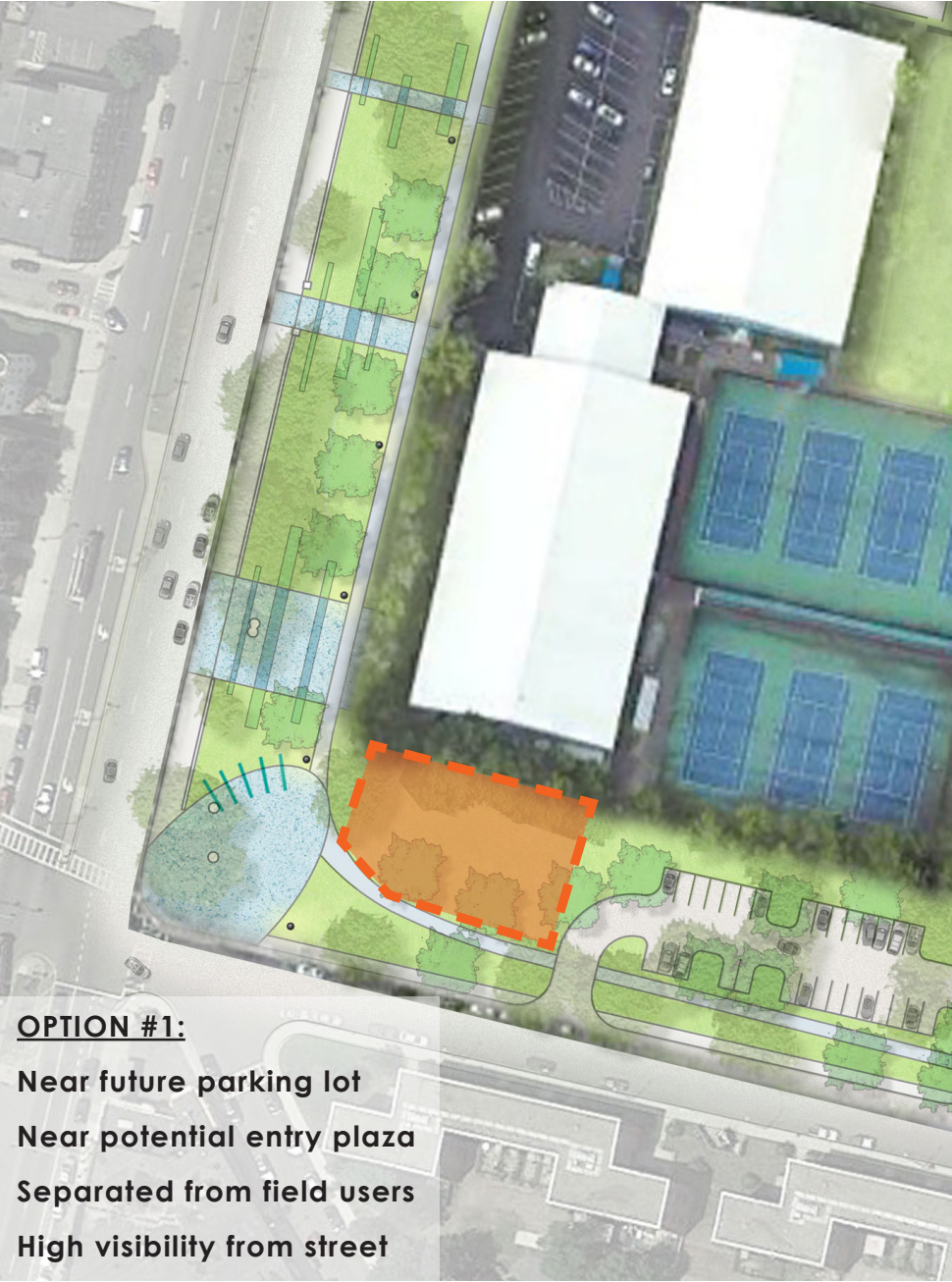
HARAMBEE PARK PHASE 4

POTENTIAL PUMP TRACK LOCATION



HARAMBEE PARK PHASE 4

POTENTIAL PUMP TRACK LOCATION



HARAMBEE PARK PHASE 4

LISTENING & DISCUSSION



ISSUES | WANTS | NEEDS | VISIONS

westonandsampson.com

HARAMBEE PARK PHASE 4

CLOSING REMARKS & NEXT STEPS

Harambee Park - BPRD Webpage
www.boston.gov/improvements-harambee-park

Amy Linné
Project Manager, BPRD
amy.linne@boston.gov