

# Improvements to **BILLINGS FIELD**

*Community Meeting #3*  
*April 25, 2023*



# ZOOM TIPS

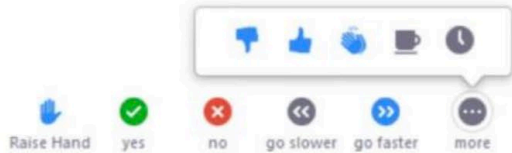
Here is how you can participate during the question and answer part of the presentation.

## DURING THE PRESENTATION:



### VIA WEB:

Turn video on / off.



To use these non-verbal options click on participants (bottom of screen); these options will pop up in side bar.

## DURING THE Q&A:



### JOINING VIA PHONE?

Use \*9 to raise hand to ask for audio / video permission to ask questions or provide comments.



### VIA WEB:

Chat to ask questions / comments or provide responses to poll questions



Raise hand to ask for audio / video permission to ask questions or provide comments.

# AGENDA

---

1

**PROJECT TEAM AND PROJECT GOALS**

---

2

**WHAT WE HEARD AT MEETING #1 and #2**

---

3

**CONCEPT PROPOSAL**

---

4

**LISTENING & DISCUSSION**

---

5

**CLOSING REMARKS AND NEXT STEPS**

---

# PROJECT TEAM AND PROJECT GOALS

---



# PROJECT TEAM

---

**B CHATFIELD**, Boston Parks and Recreation Department

*Project Manager, City of Boston*

[abigail.chatfield@boston.gov](mailto:abigail.chatfield@boston.gov) or 617-504-7709

**MATTHEW SOULE**, Weston & Sampson Design Studio

*Senior Project Manger*

**MELISSA GREEN**, Weston & Sampson Design Studio

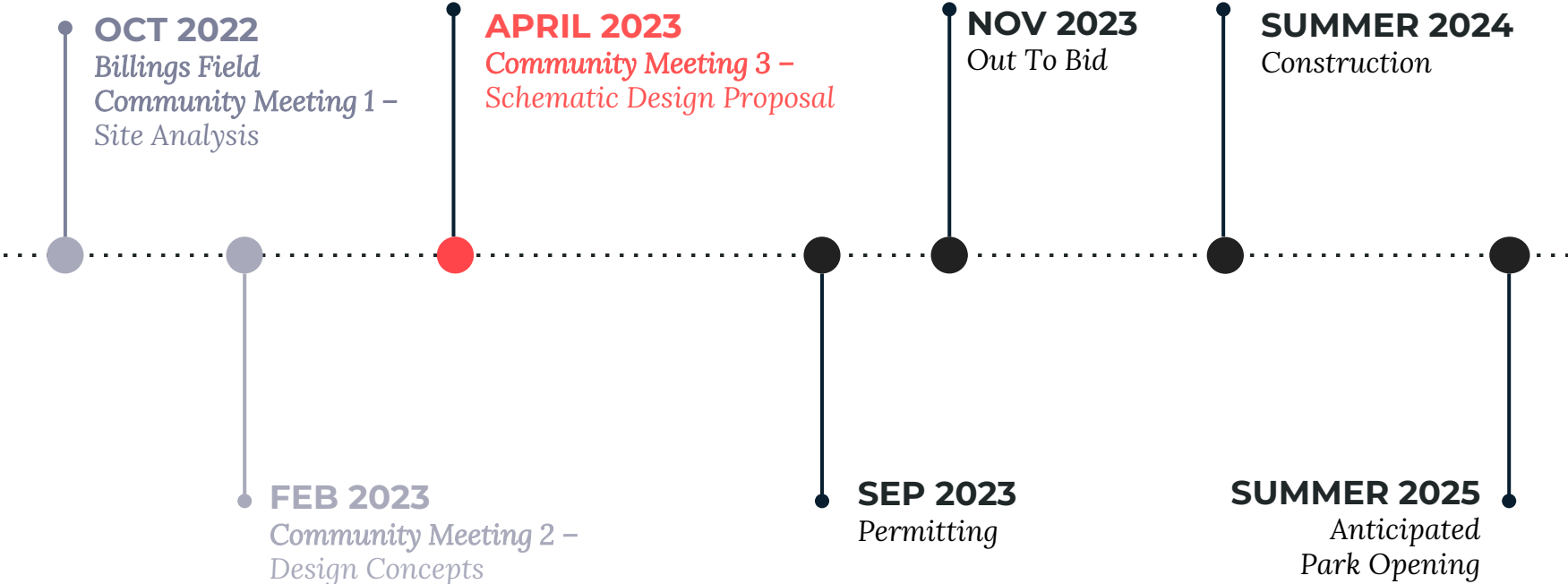
*Landscape Designer*

**YUANBIN WANG**, Weston & Sampson Design Studio

*Landscape Designer*

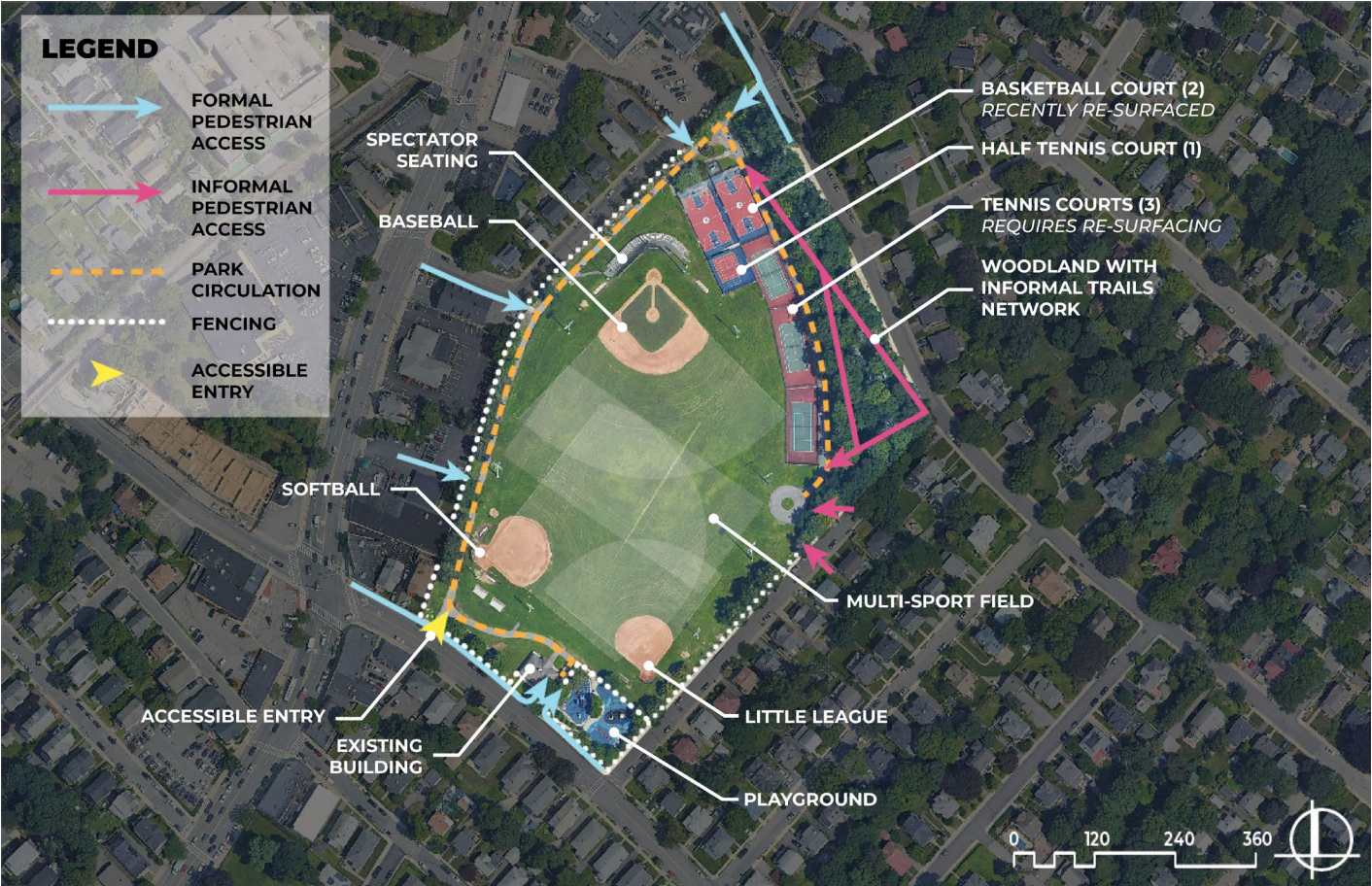
# PROJECT SCHEDULE

Current Design Budget: \$500,000





# EXISTING SITE: PROGRAM





# EXISTING SITE: TREE CONDITION AND POTENTIAL REMOVALS

PRESENTED AT MEETING #1



Note:  
All removals pending approval of Boston City Arborist

# DESIGN CONCEPTS PRESENTED AT MEETING #2

---



# DESIGN CONCEPT A

PRESENTED AT MEETING #2



Entry Experience - Plaza

Credit: SSA Landscape Architects  
Callaghan Park, CA



Entry Experience - Lawn



Wooded Plaza



Terraced Lawn Seating



Hockey Rink



Shade Structure



# DESIGN CONCEPT B

PRESENTED AT MEETING #2



Picnic Grove



Entry Plaza



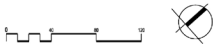
Poles For Hammocks



Enclosed Dog Run



Picnic Grove



# DESIGN CONSIDERATIONS BASED ON PUBLIC FEEDBACK

---

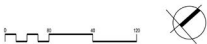
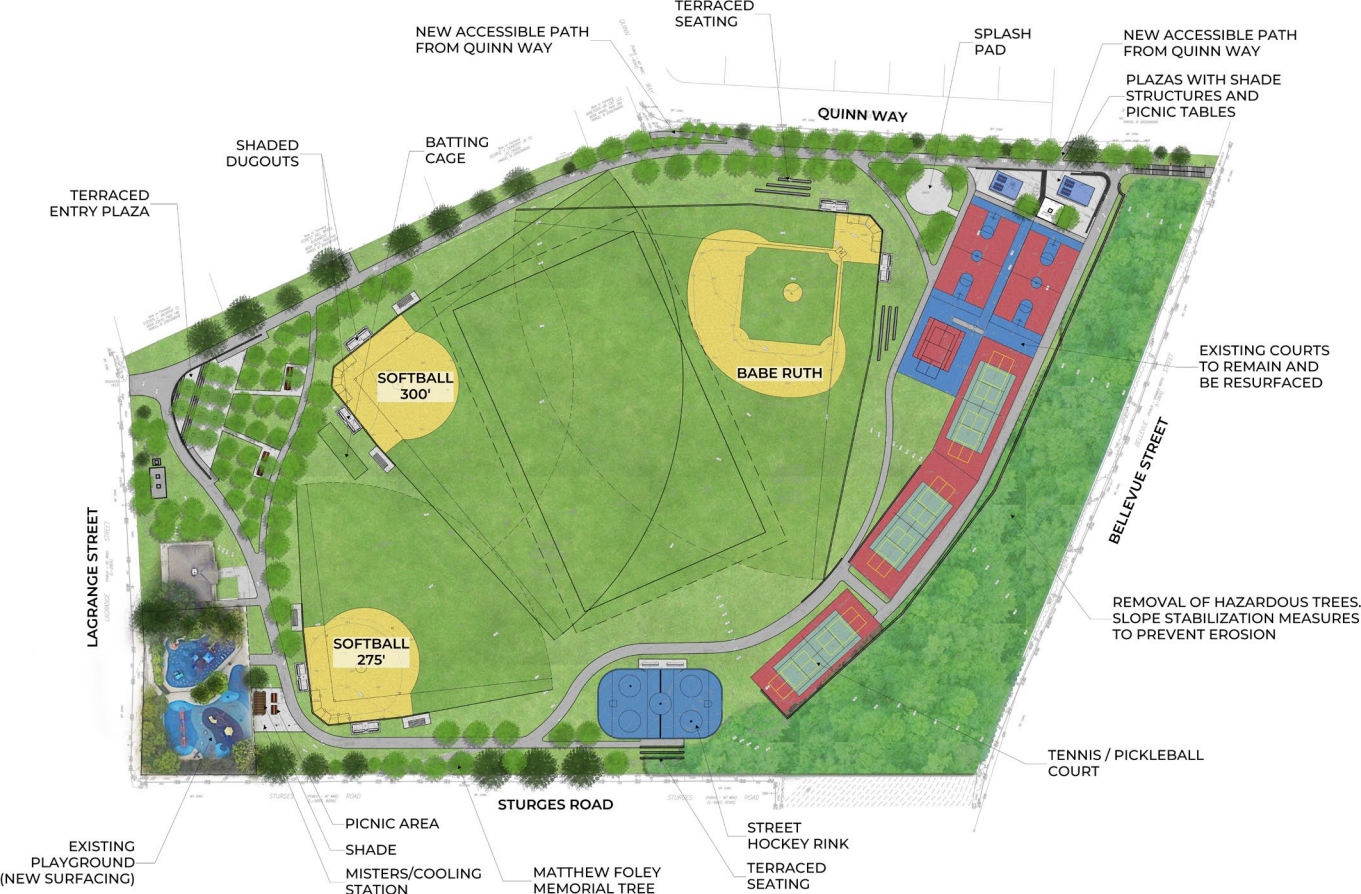
- Improve drainage of fields
- Improve accessibility throughout the park
- Repair Bellevue stairs and add a bike ramp
- Provide gathering space
- Update playground, not complete replacement
- Lighting Improvements
- General ball field improvements: improve orientation where possible, update furnishings and fencing, keep one softball field at 300' for adult use
- Babe Ruth field remains in current location
- Replace Little League field with softball field
- New street hockey rink
- New splash pad
- Provide water element adjacent to existing playground
- Provide bathroom access and maintain open feel of park

# UPDATED DESIGN CONCEPT

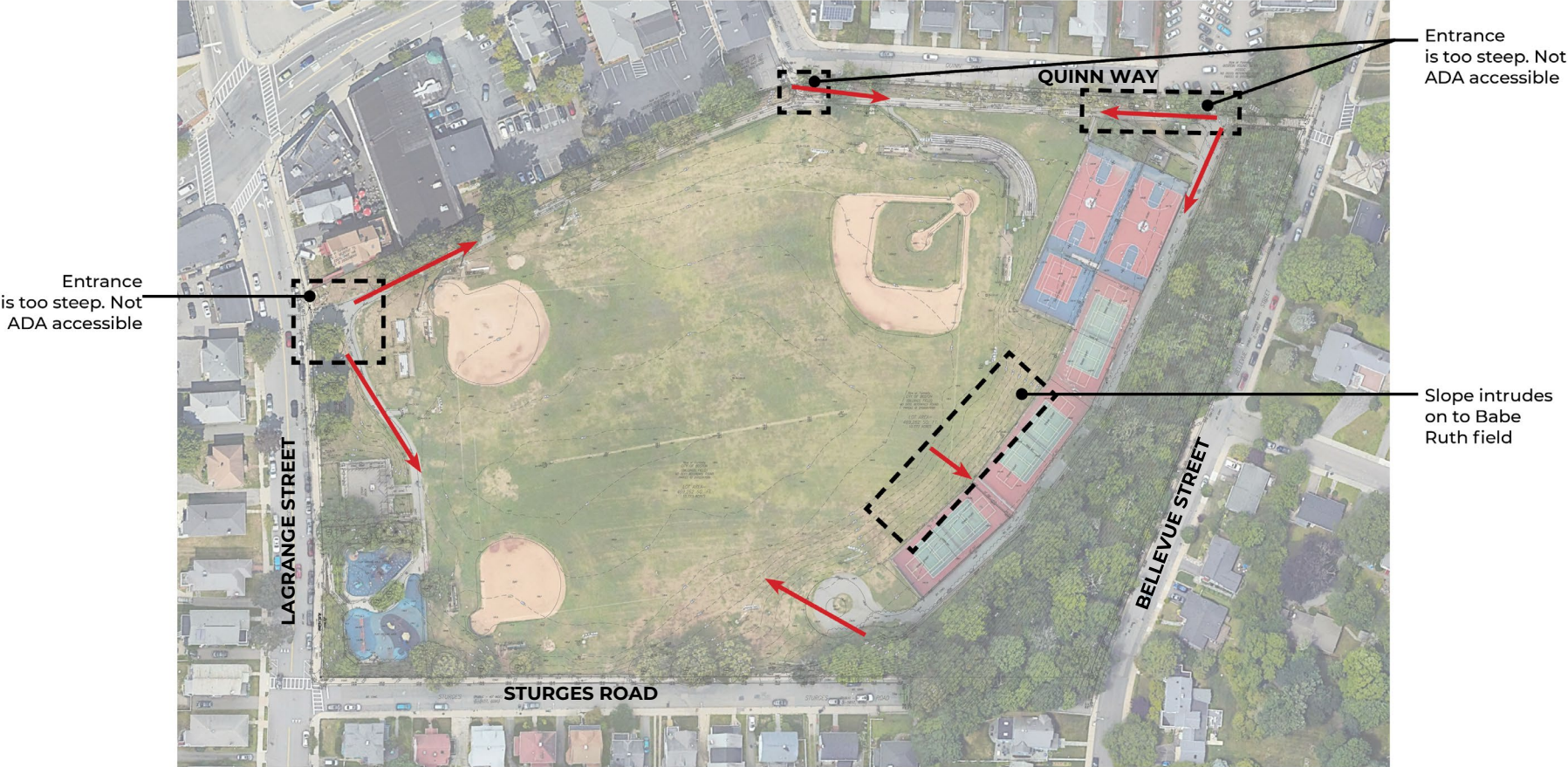
---



# DESIGN CONCEPT



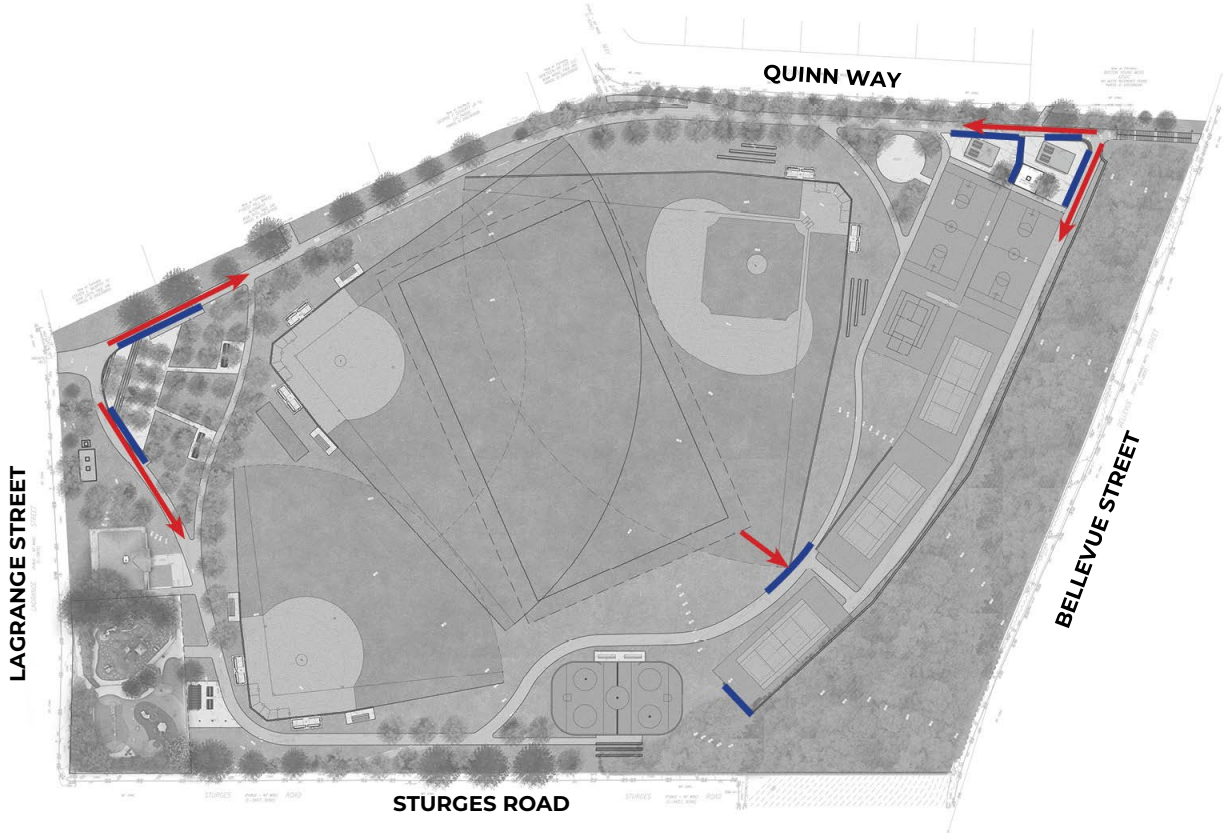
# EXISTING ACCESS ISSUES AND PROGRAM PINCH POINTS



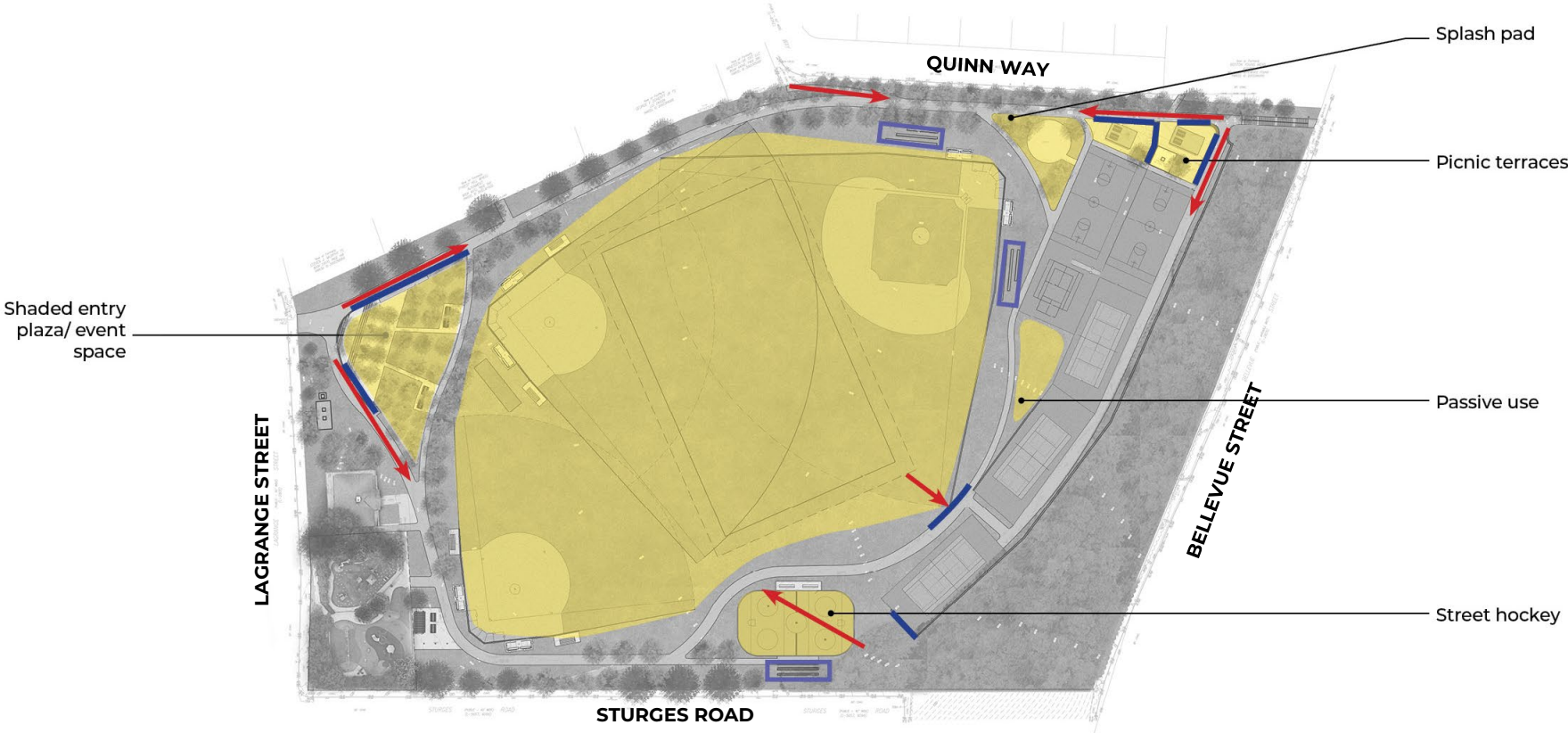


# LOW WALLS TO SUPPORT ACCESS ROUTES AND FIELD SPACE

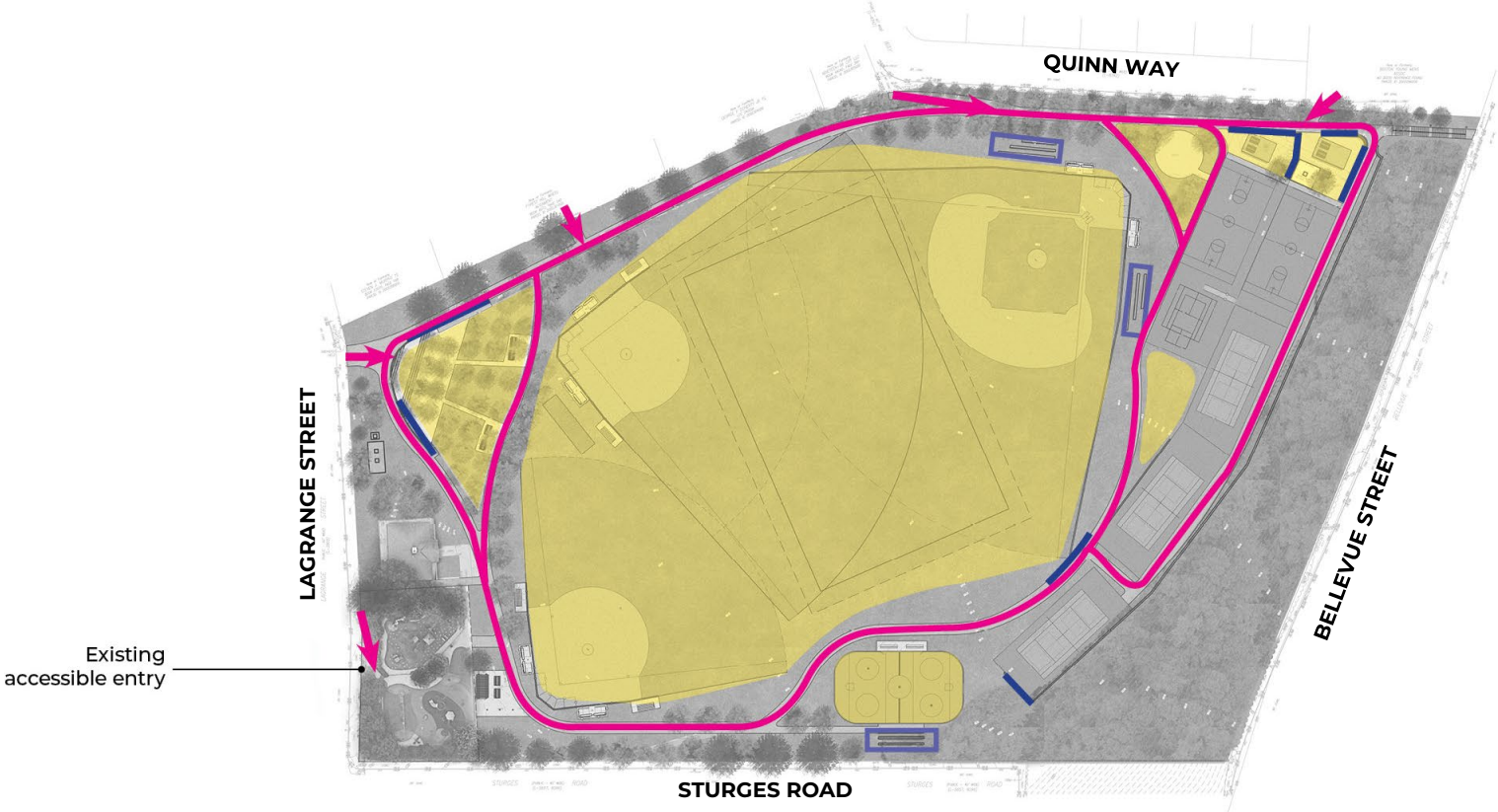
---



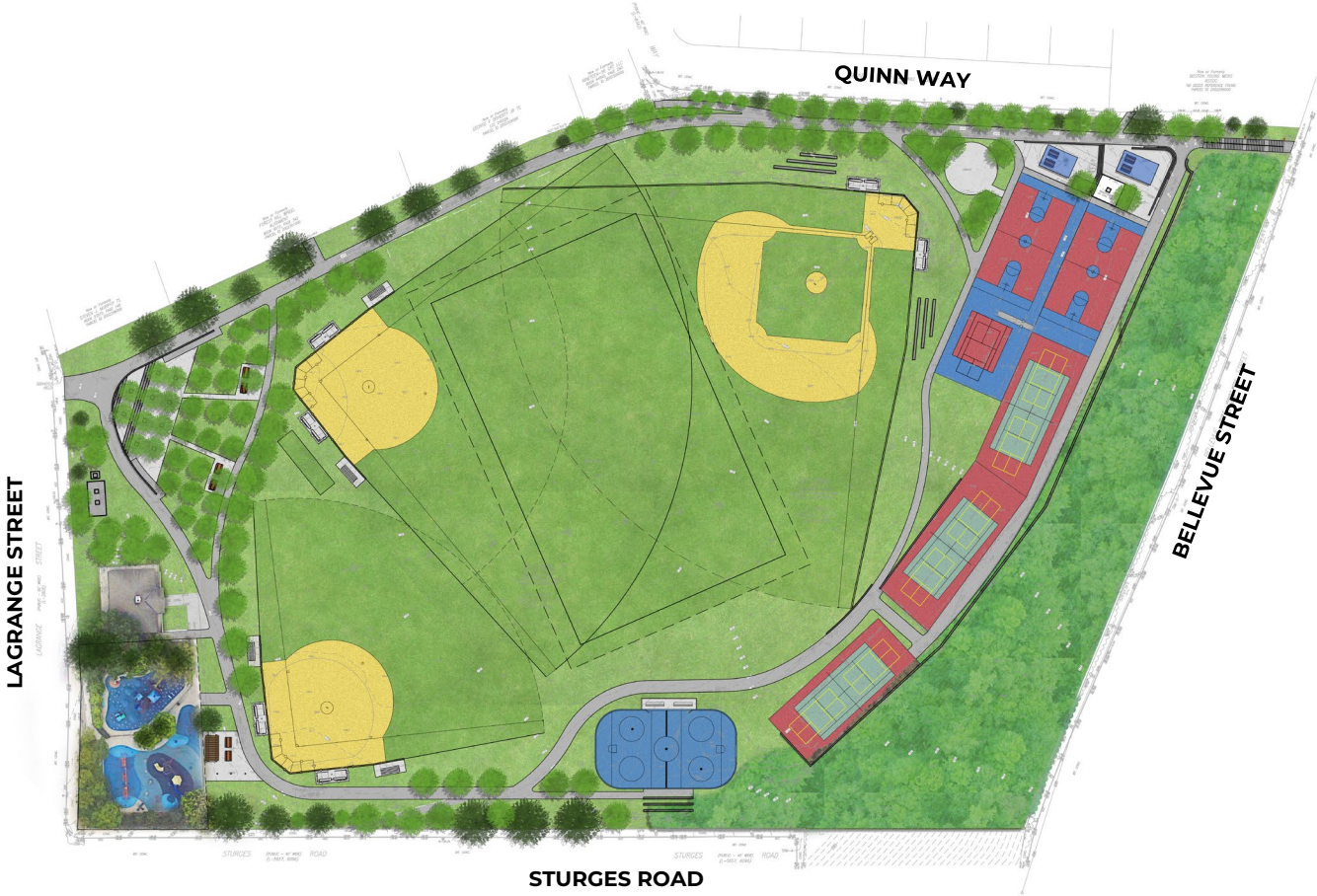
# LEVEL SPACES + SEATING SLOPES



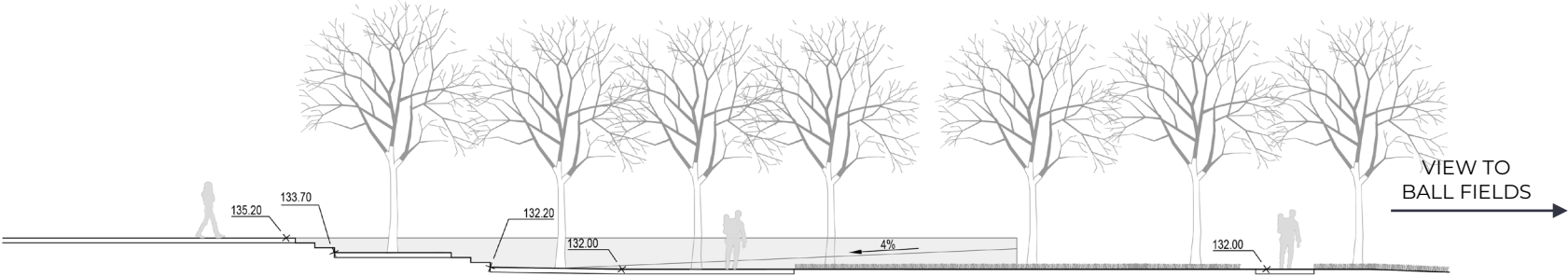
# NEW ACCESSIBLE WALKING PATHS



# PROGRAM



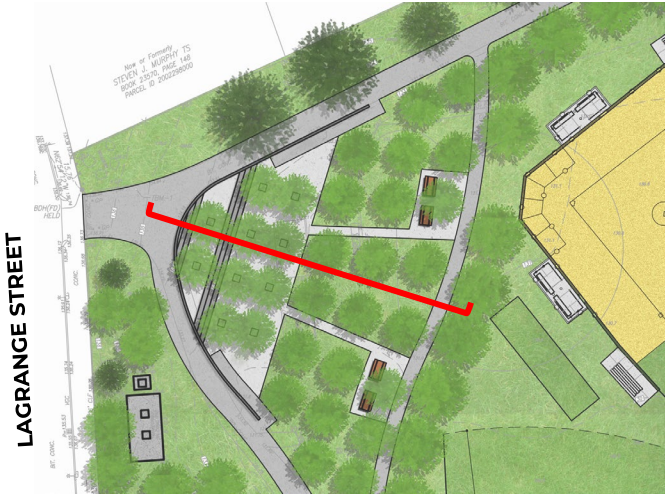
# PLAZA AT LAGRANGE ENTRANCE



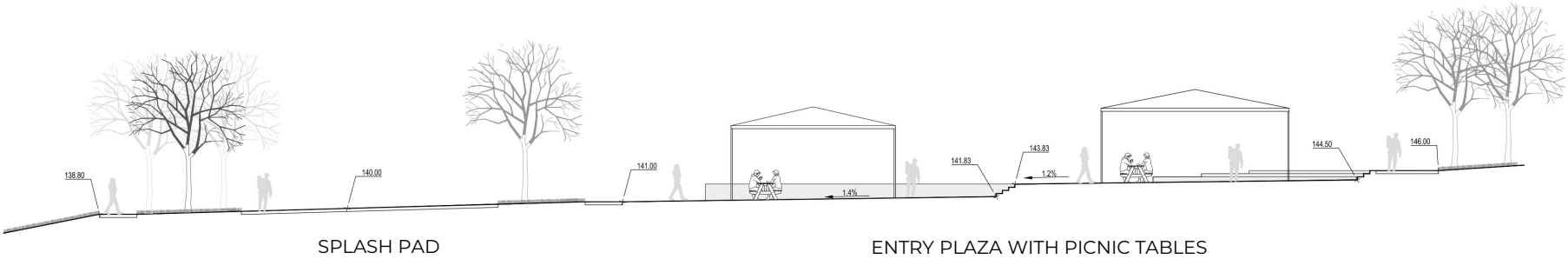
ENTRY STEPS

PAVED PLAZA

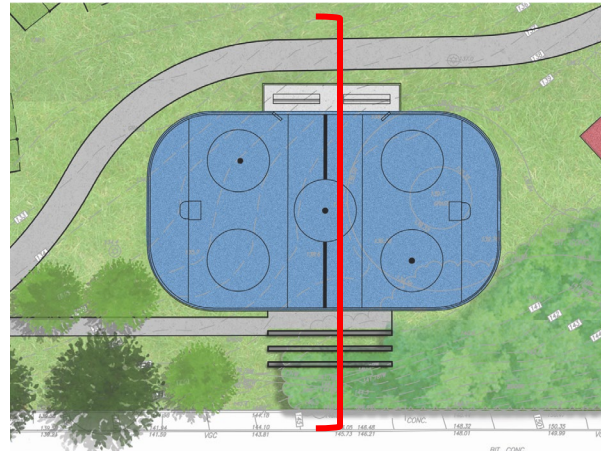
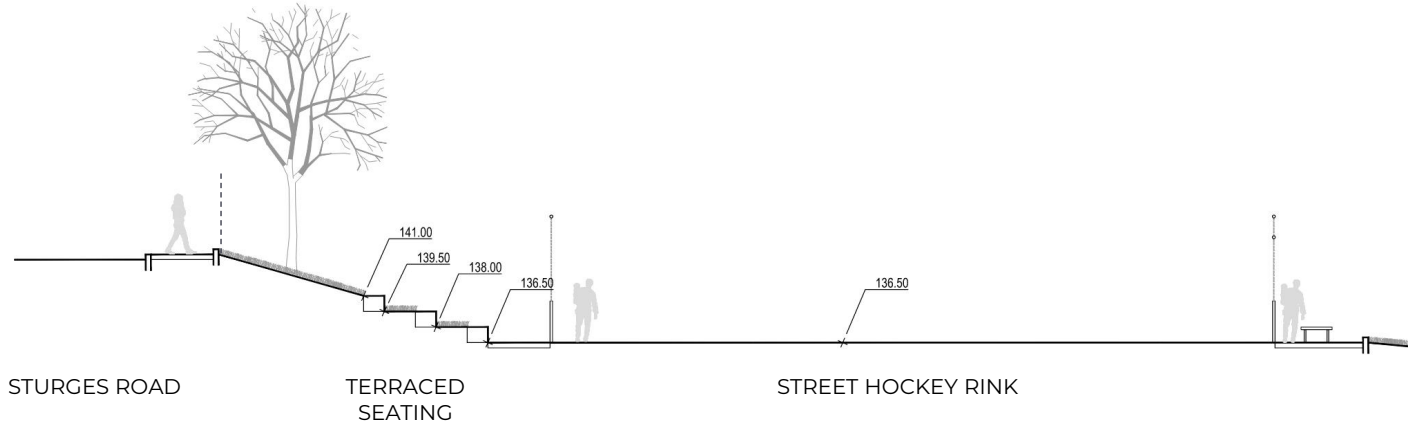
PATHWAY



# PLAZA AT BELLEVUE ENTRANCE



# STREET HOCKEY RINK



STURGES ROAD

# PLAZA PRECEDENTS

---





# SHADE STRUCTURE PRECEDENTS

---



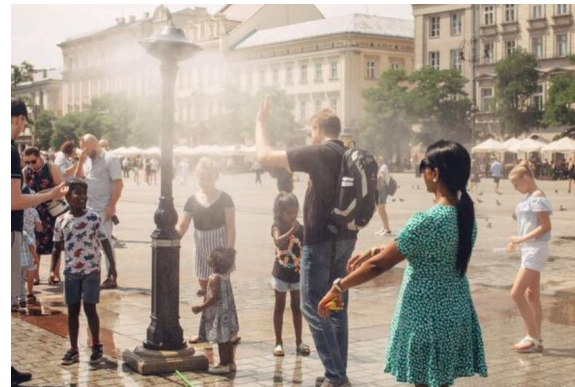
# WATER ELEMENT PRECEDENTS

---

Splash Pad



Misters



## LISTENING & DISCUSSION

---

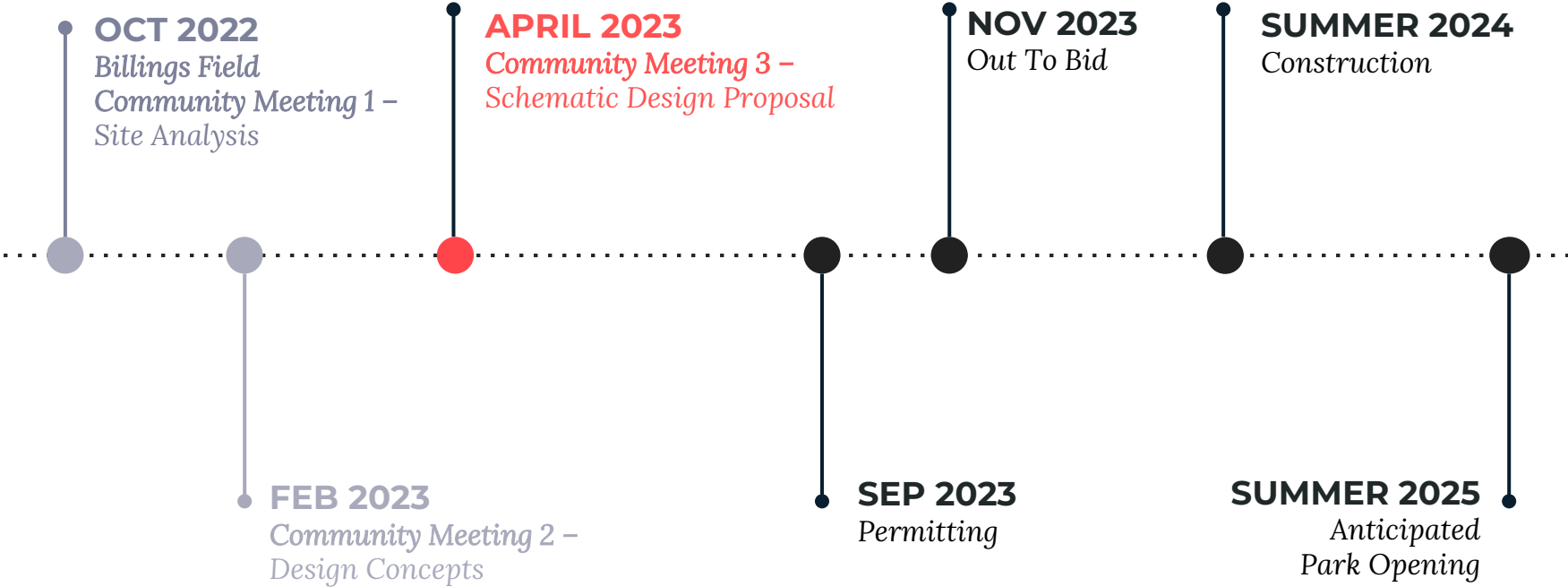
**Let us know what matters to  
you.**

**Help us build great parks.**



# PROJECT SCHEDULE

Current Design Budget: \$500,000



# THANK YOU

Have questions? Contact:

**B Chatfield**

**[abigail.chatfield@boston.gov](mailto:abigail.chatfield@boston.gov)**

**[boston.gov/billings-field](https://boston.gov/billings-field)**

**617-504-7709**