

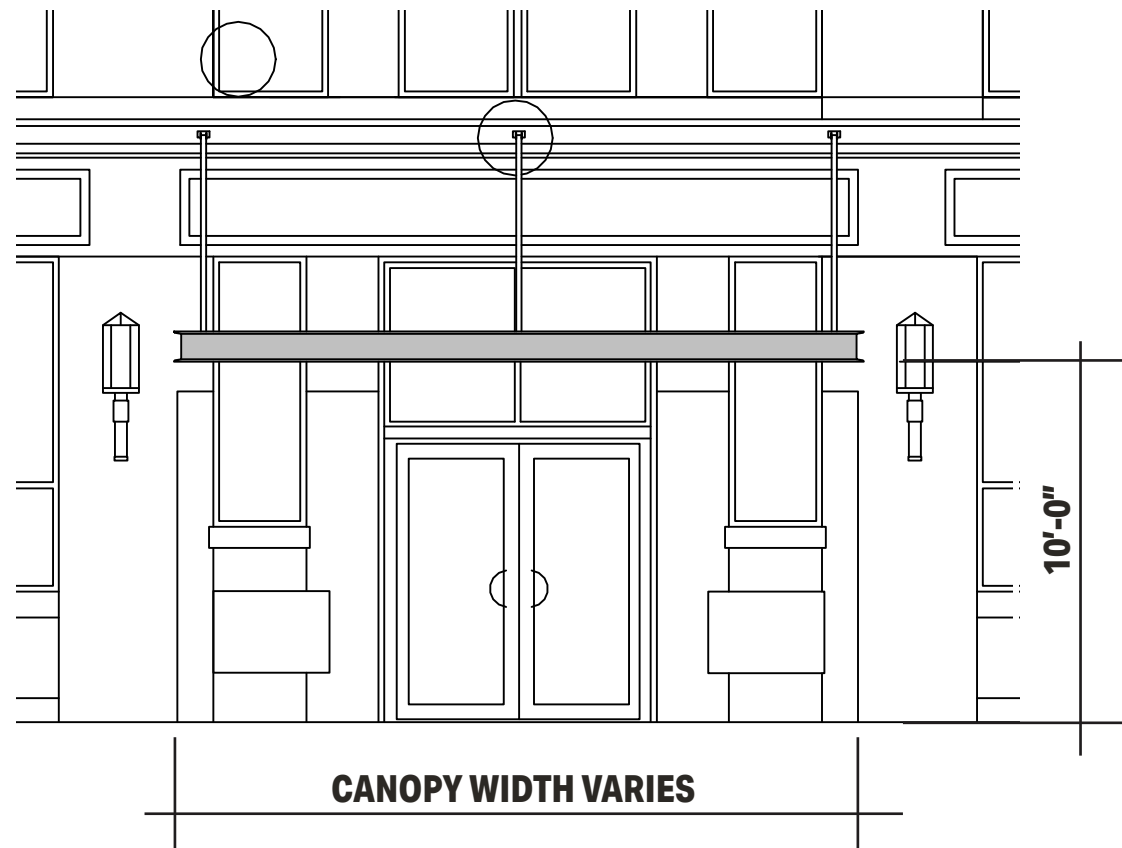
THOMSON PL.

FORT POINT

CANOPIES AT OFFICE ENTRIES

CANOPIES AT OFFICE ENTRIES

Proposed canopies are to be steel with channel fascia similar to the one installed at Trader Joe's



Neighborhood Precedence: 11 Thomson Place

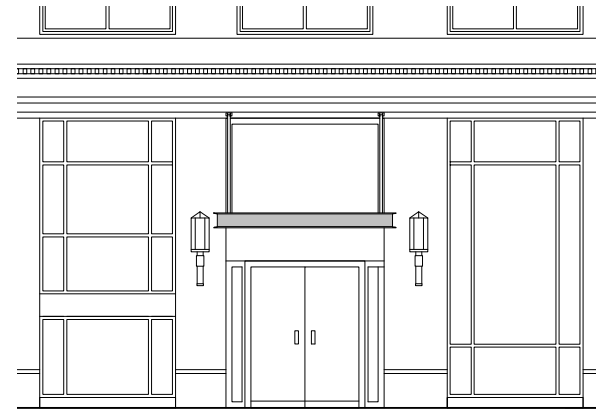
CANOPIES AT OFFICE ENTRIES - ELEVATIONS



CANOPIES AT OFFICE ENTRIES - ELEVATIONS



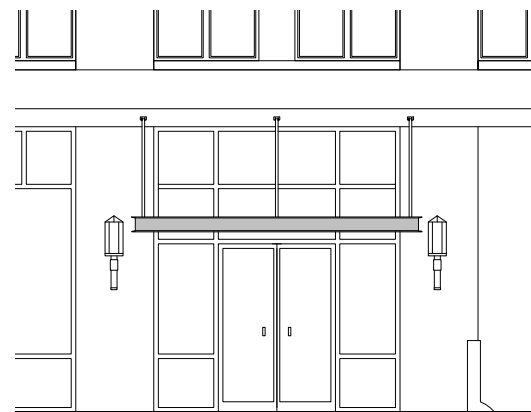
CANOPIES AT OFFICE ENTRIES - ELEVATIONS



12 THOMSON PLACE
10"H x 10"W x 4"D



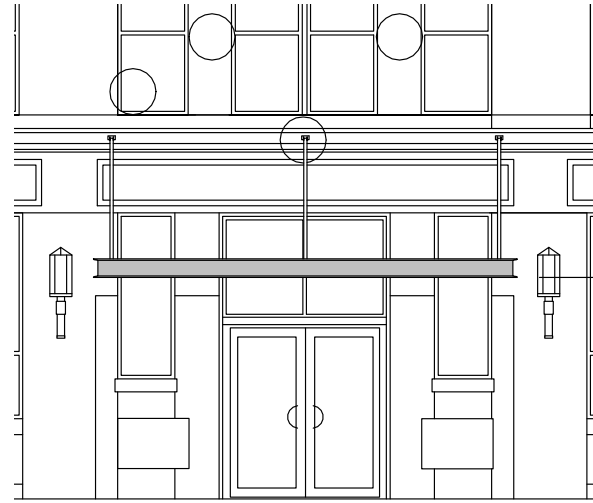
26 THOMSON PLACE
10"H x 16"W x 4"D



30 THOMSON PLACE
10"H x 16"W x 4"D



CANOPIES AT OFFICE ENTRIES - ELEVATIONS



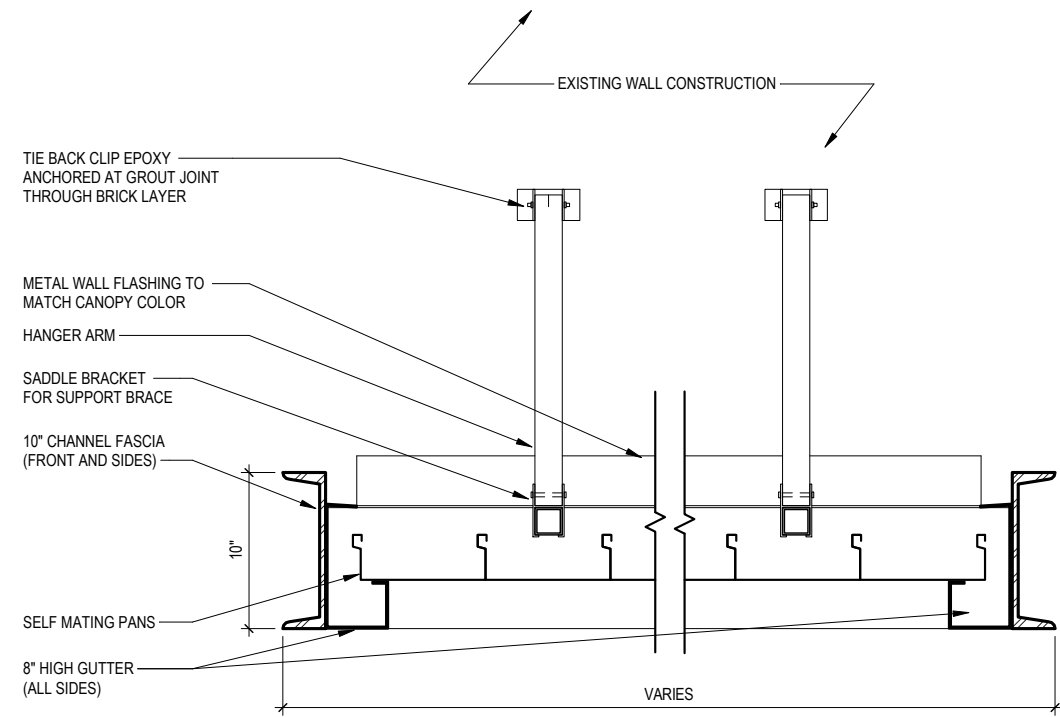
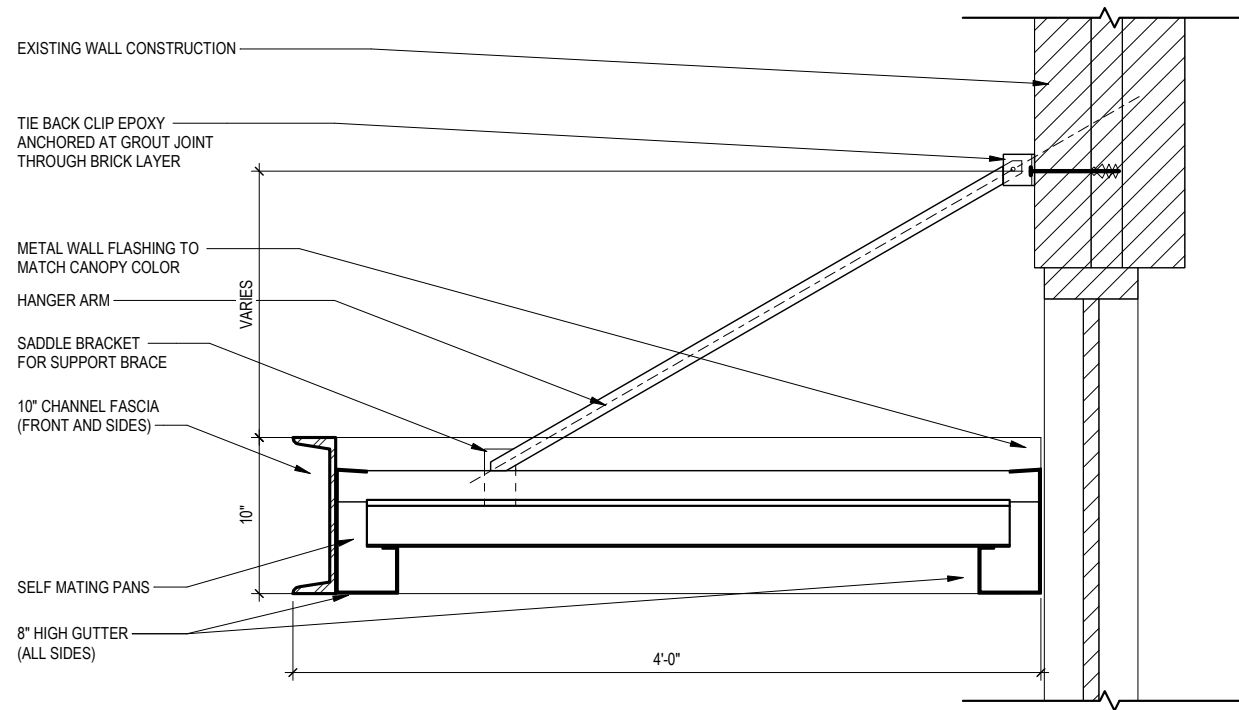
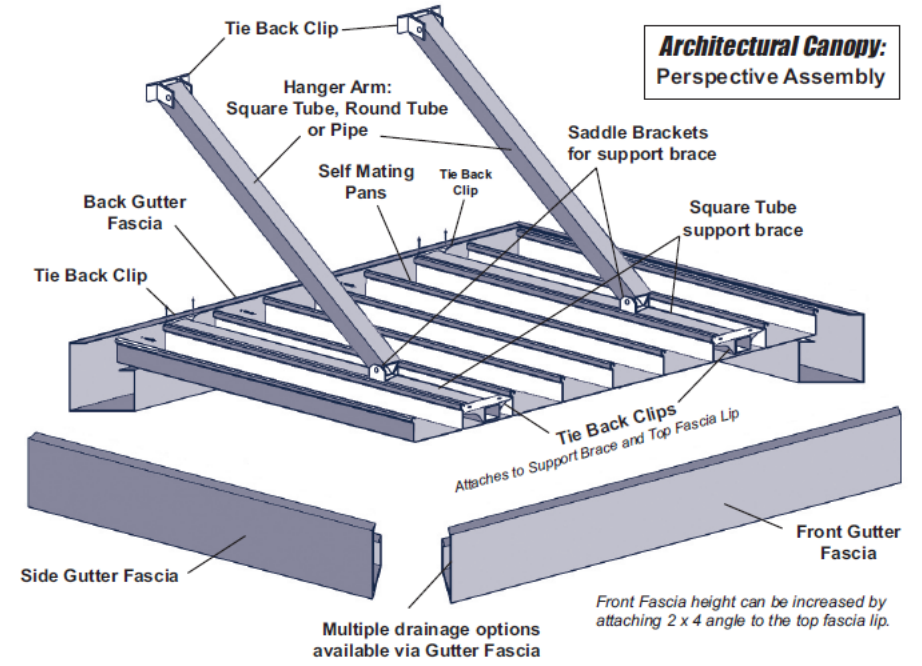
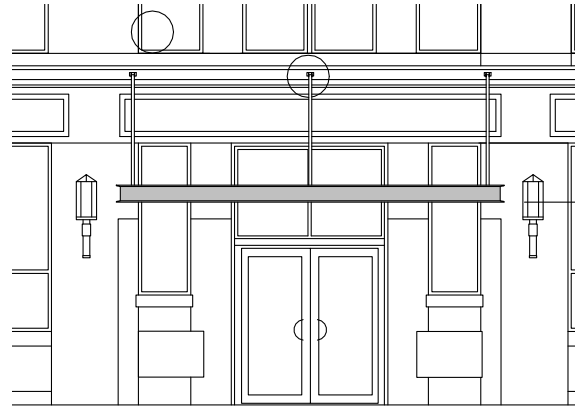
35 THOMSON PLACE
10"H x 20"W x 4'D



25 THOMSON PLACE
10"H x 10"W x 4'D



CANOPIES AT OFFICE ENTRIES - DETAILS



STREET LIGHTING

STREET LIGHTING



Existing



Proposed: Double the quantity of current 1/3 VILLAGE 375 LVC Catenary Suspended. This includes increasing the count on the current strands and adding new to brighten and activate the street at night



STREET LIGHTING - PRODUCT

VILLAGE 375 LVC
Catenary Suspended

.hess

DESCRIPTION

The contemporary form of VILLAGE adds a minimalist accent to modern architecture. Fabricated aluminum housing encircles the clear acrylic cylindrical lens. Electrical components are housed in a spun aluminum enclosure and mounted in the luminaire. Luminaire is finished in finely textured paint. All hardware is stainless steel. Structural design, stainless steel catenary cable, and fittings for mounting to support structure provided by others.



PROTECTED BY

PRIMAR®

Date: _____ Type: _____ Catalog Number: _____

Project Name: _____

ORDERING INFORMATION

LUMINAIRE							
MODEL	LAMP	COLOR TEMPERATURE	DISTRIBUTION	VOLT	MOUNTING	FINISH	OPTION
VA375	LED	WW-3000K	T2- TYPE II	UNV-120-277V	X- CANTENARY	SG - Silver Grey	DIM- 0-10V DIMMING
			T3- TYPE III			DG - Dark Grey	HS- HOUSESIDE SHIELD
		T4- TYPE IV	GG - Graphite Grey	TVSS20-20KV SURGE SUPPRESSOR			
		T5- TYPE V	MB - Matte Black	TW- THROUGH WIRE			
			DB - Dark Bronze	XC- ADDITIONAL POWER CABLE			
		CC - Custom RAL Color				N- NONE	

VILLAGE 375 LVC
Catenary Suspended

.hess

SPECIFICATIONS

HOUSING

Ringed cage is fabricated from high strength 6061 aluminum alloy. Clear acrylic cylindrical lens assembly twists onto mounting plate at the top of the cage assembly and is secured with three socket head cap screws. Lens is sealed with one-piece silicone gasket. Power cable is sealed with weather-tight bushing at top of the luminaire. All hardware is stainless steel.

OPTICS

Optical assembly consists of one LEVO C LED module mounted within the cylindrical clear acrylic lens. The module consists of an aluminum core PCB with four high-power LEDs and a single piece lens molded from optical quality acrylic. Light distributions include a choice of Type II, III, IV, or V optics. LED circuit boards are equipped with electrical disconnects to allow for future technology upgrades. CRI is 80+.

ELECTRICAL

Electronic LED driver supplies 700mA drive current to the LED module with input voltage range from 120v through 277v at 50/60Hz. Power consumption is 37 watts. Optional 0-10v DC dimming is available on request.

DELIVERED LUMENS/ BUG RATING

3000K
Type 2 = 3248 lumens / B1-U1-G1
Type 3 = 3356 lumens / B1-U2-G1
Type 4 = 3261 lumens / B1-U1-G1
Type 5 = 3542 lumens / B2-U1-G1

4000K
Type 2 = 3456 lumens / B1-U1-G1
Type 3 = 3571 lumens / B1-U2-G1
Type 4 = 3469 lumens / B1-U1-G1
Type 5 = 3768 lumens / B2-U1-G1

NOTE:

Due to rapid and continuous advances in LED technology, LED luminaire data is subject to change without notice and at the discretion of HessAmerica. Consult factory for current technical data.

MOUNTING

Articulating cable hanger assembly is machined aluminum and is adjustable to level the luminaire. Cable hanger assembly will accommodate 1/4" - 1/2" diameter stainless steel cable. Side mounted 1/8" - 1/4" stainless steel stabilization cables (by others) attach to eyelets on opposite sides of the luminaire cage with swaged end fittings. (Structural design, stainless steel catenary and stabilization cables, and fittings for mounting to support structure provided by others). Contact factory for fitting suppliers.

WEIGHT

30 lbs
EPA: 3.1 sq ft

STREET LIGHTING

VILLAGE 375 LVC Catenary Suspended

.hess

FINISH:

Standard finishes are finely textured matte silver grey metallic, dark grey, graphite grey, matte black, or dark bronze. Special colors available on request.

CERTIFICATION

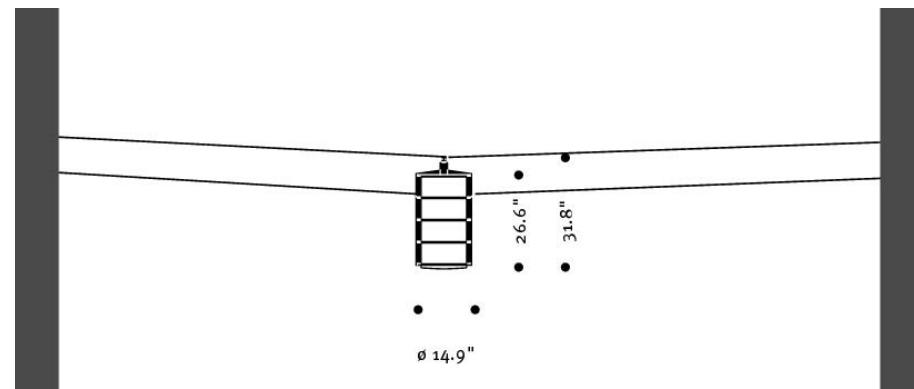
CSA Certified for Wet Locations

WARRANTY

Limited product warranty period including LEDs is five years. Driver shall carry the manufacturer's limited warranty.

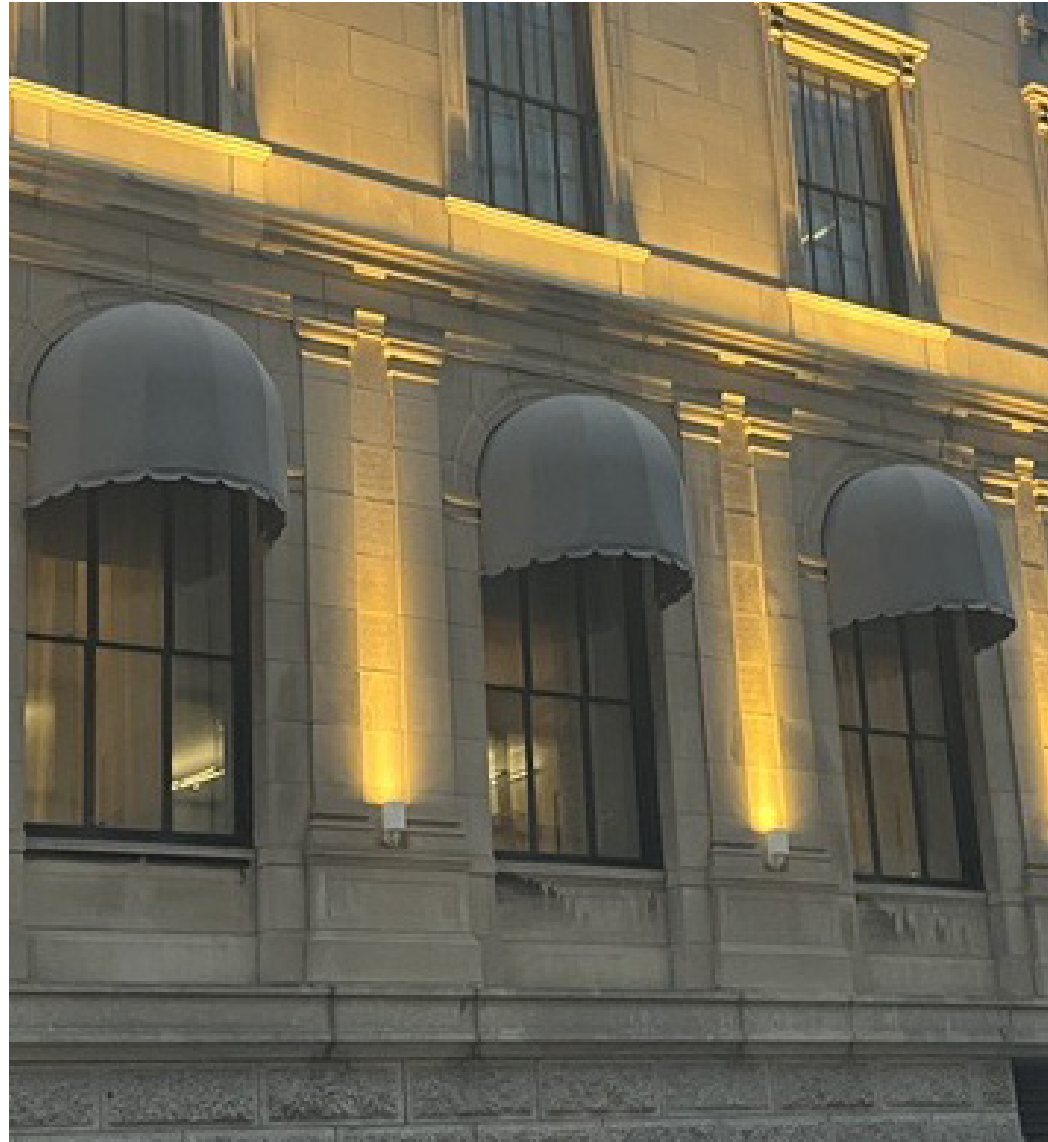
DIMENSIONS

All dimensions are shown in inches unless otherwise noted.



BUILDING LIGHTING

BUILDING LIGHTING - INTENT



Proposed intent
Precedent set in other locations around Boston

Neighborhood Precedent

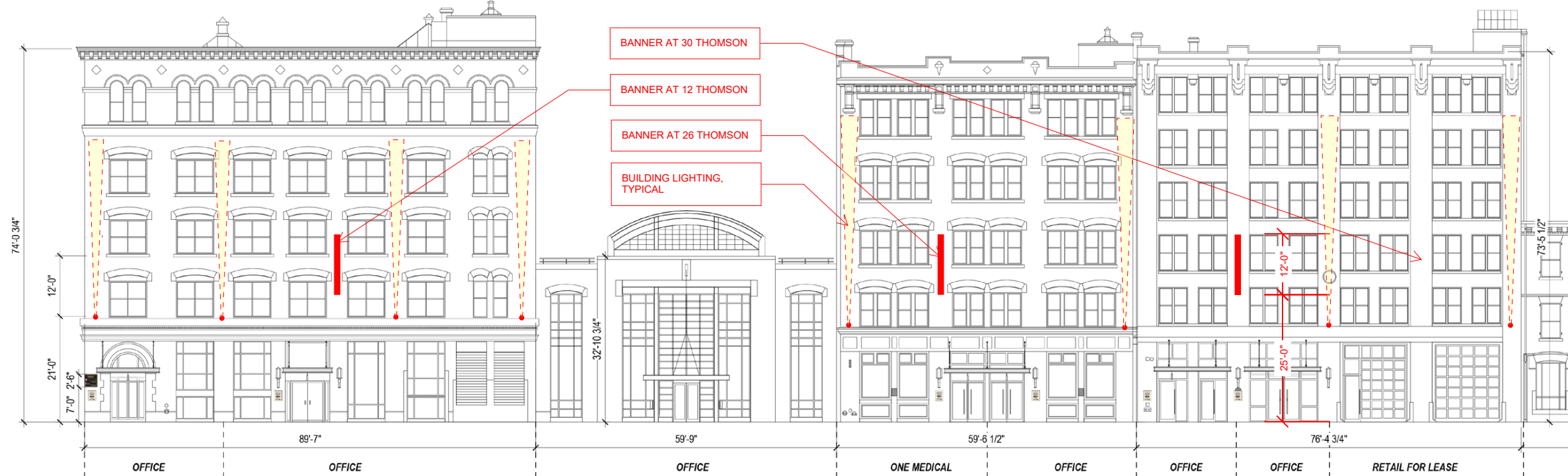
BUILDING LIGHTING - LOCATIONS



BUILDING LIGHTING - LOCATIONS



BUILDING LIGHTING - LOCATIONS



BUILDING LIGHTING

Existing:
Large lighting pendants on facade only highlight the lower level and not visible from ends of the street

Proposed:
Draw the eye up and improve street safety with spot pendants that highlight the brickwork and facades

Refer to previous slide for layout for lighting



Mockup



Existing



Proposed

BUILDING LIGHTING - PRODUCT

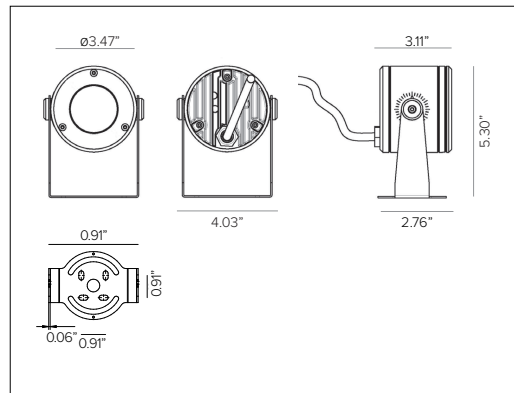
TARGETTI

DART ROUND SMALL REMOTE

Compact Professional Adjustable Floodlight



DART ROUND SMALL REMOTE Shown in Ferrite Dark Grey finish.



CONCEPT

Small footprint fully adjustable LED projector with remote driver.

MECHANICAL CHARACTERISTICS

Dimensions	5.30"H x 4.03"W x 3.11"D
Materials	Die-cast aluminum powder coated body and joints for maximum heat dissipation.
Finish	Textured finish. ● Ferrite Dark Grey ● Heritage Brown ● Bronze ● Black ● White ● Sandstone Grey
Power Connection	Pre-cabled with 25' Belden direct burial 18ga 2 conductor cable for connection to remote power supply.
Functionality	Adjustable up to ±60° on the horizontal plane with slotted mounting base and +90°/45° on the vertical plane with aim locking set screw.
Mounting	Fixture can be installed directly to mounting surface or used with optional mounting installation accessories.
Weight	1.5lbs
Protection	IP66
Impact	IK10

CERTIFICATIONS

cULus Class 2 Wet Location Listed.
Tested in accordance with LM-79-08.
Compliant with California energy regulations.
IEC 62471.
RoHS3 EU 215/863

WARRANTY

5 year limited warranty

ELECTRICAL CHARACTERISTICS

Power Supply	Remote Class 2 120V-277V AC power supply required, see available options.
Wattage	2W (NSP) / 15W nominal (SP / FL / MWFL)
Voltage	24V DC

SOURCE

NSP uses high efficiency LED Emitter. SP, FL, and MWFL use high efficiency LED Chip on Board with optimized melanopic ratios.

TM30	CCT (Nominal)	CRI	Rf	Rg	MR	SDCM
	2700K	81	80	97	2	2
	3000K	82	82	97	2	2
	3500K	82	81	97	2	2
	4000K	82	81	97	2	2
	5000K	84	81	97	2	2

Ro90 available upon request

OPTIC

Optical system is dependent on beam angle. NSP, SP and FL versions comprised with methacrylate lenses. MWFL version comprised of precision optics with convex reflective anodized aluminum facets.

Beam		NSP 5°	SP 16°	FL 30°	MWFL 48°
Delivered Lumens	3000K	162Lm	1342Lm	1403Lm	1672Lm
	4000K	175Lm	1418Lm	1415Lm	1685Lm
<i>For 2700K lumen values use multiplier of 0.96 from 3000K. For 3500K lumen values use multiplier of 1.02 from 3000K. For 5000K lumen values use multiplier of 1.02 from 4000K.</i>					
Efficacy		112Lm/W max. Refer to photometric graphs for specific values.			
Lifetime		NSP: L80/B10 60,000hrs at max TA +25°C SP / FL: L80/B10 80,000hrs at max TA +25°C MWFL: L80/B10 100,000hrs at max TA +25°C			
Photobiological Classification		Low risk safety RG1			

TARGETTI

DART ROUND SMALL REMOTE

ORDERING CODE

DRS	1	2	3	4	5	6	7	8	9	10
Ex: DRSRPFELINS27 / DML E301242UD							OPTIONAL	REQUIRED		OPTIONAL

1 - PRODUCT CODE	2 - DRIVER	3 - FINISH	4 - WATTAGE	5 - OPTIC	6 - KELVIN	7 - OPTIONAL
DRS — DART ROUND SMALL	RP — Remote Power	FE — Ferrite Dark Grey HB — Heritage Brown BZ — Bronze WT — White BT — Black SG — Sandstone Grey RAL — Custom RAL	L1 ^a — 2W L2 ^c — 15W	NS — NSP 5° SP — SP 16° FL — FL 30° MF — MWFL 48°	27 — 2700K 30 — 3000K 35 — 3500K 40 — 4000K 50 — 5000K	MG ^a — Marine Grade

8 - POWER SUPPLY	9 - EXTERNAL OPTICAL ACCESSORIES	10 - INSTALLATION ACCESSORIES
REQUIRED See Power Supply section for available options.	Blade of Light Linear Spread Lens <i>See section for details</i> Anti-glare Louver <i>See section for details</i> Asymmetric Snoot <i>See section for details</i> Symmetric Snoot <i>See section for details</i> Symmetric Super Snoot <i>See section for details</i>	Rotational Bracket <i>See section for details</i> Earth spike <i>See section for details</i> Back Plate <i>See section for details</i>

^a Marine Grade is recommended for use in environments with occasional exposure to salt air, reclaimed water, fertilizers, chemical cleaners, or frequent pressure washing (steam) cleaning. Fixture housing complete with marine grade cathaphoresis suitable for use in marine grade environments. Not to be in direct contact with salt or corrosive agents for extended periods of time.

^b 2W available with NSP only.

^c 15W available with SP, FL, and MWFL only.

DART ROUND SMALL REMOTE

8 - POWER SUPPLY (REQUIRED)

ENCLOSURE								
Part No.	Wattage	Control	Dim Range	Rating	In / Out Voltage	Certification	Dimensions (Enclosure)	Description
DMLE301242UD	30W	MLV / ELV / 0-10V / TRIAC	MLV <10% / ELV <10% / 0-10V <5%	NEMA3R	120-277V / 24V	UL Class 2	4.47" X 6.79" X 1.38"	EMCOD MLE-UD electronic driver with wiring compartment.
DELV30124DJBX	30W	0-10V	1%	IP65	120-277V / 24V	UL Class 2	12.1" X 2.4" X 1.4"	Magnitude SOLIDrive electronic driver with built in junction box.
DMLE601242UD	60W	MLV / ELV / 0-10V / TRIAC	MLV <10% / ELV <10% / 0-10V <5%	NEMA3R	120-277V / 24V	UL Class 2	4.47" X 6.79" X 1.38"	EMCOD MLE-UD electronic driver with wiring compartment.
DELV60124DJBX	60W	0-10V	1%	IP65	120-277V / 24V	UL Class 2	12.1" X 2.4" X 1.4"	Magnitude SOLIDrive electronic driver with built in junction box.
DMLE961242UD	96W	MLV / ELV / 0-10V / TRIAC	MLV <10% / ELV <10% / 0-10V <5%	NEMA3R	120-277V / 24V	UL Class 2	5.16" X 7.73" X 1.54"	EMCOD MLE-UD electronic driver with wiring compartment.
DELV96124DJBX	96W	0-10V	1%	IP65	120-277V / 24V	UL Class 2	12.1" X 2.4" X 1.4"	Magnitude SOLIDrive electronic driver with built in junction box.
DMLE1922242UD	2X96W	MLV / ELV / 0-10V / TRIAC	MLV <10% / ELV <10% / 0-10V <5%	NEMA3R	120-277V / 24V	UL Class 2	5.04" X 10.94" X 1.81"	EMCOD MLE-UD electronic driver with wiring compartment.
DMLE2882242UD	3X96W	MLV / ELV / 0-10V / TRIAC	MLV <10% / ELV <10% / 0-10V <5%	NEMA3R	120-277V / 24V	UL Class 2	5.04" X 10.94" X 1.81"	Magnitude SOLIDrive electronic driver with built in junction box.
STANDALONE								
Part No.	Wattage	Control	Dim Range	Rating	In / Out Voltage	Certification	Dimensions (Standalone)	Description
DELV30124D	30W	0-10V	1%	IP65	120-277V / 24V	UR Class 2	7.5" X 2.4" X 1.4"	Magnitude SOLIDrive electronic standalone driver. UL listed enclosure provided by others.
DELV60124D	60W	0-10V	1%	IP65	120-277V / 24V	UR Class 2	7.5" X 2.4" X 1.4"	Magnitude SOLIDrive electronic standalone driver. UL listed enclosure provided by others.
DELV96124D	96W	0-10V	1%	IP65	120-277V / 24V	UR Class 2	7.5" X 2.4" X 1.4"	Magnitude SOLIDrive electronic standalone driver. UL listed enclosure provided by others.

MAX FIXTURES PER DRIVER						
Fixture Wattage	Driver Wattage					
	30W	60W	96W	2X96W	3X96W	
	2W	12	24	38	38+38	38+38+38
15W	1	3	5	5+5	5+5+5	

MAX CABLE DISTANCE						
Fixture Wattage	No. Fixtures	Load	Cable Gauge			
			18 AWG	16 AWG	14 AWG	12 AWG
2W	1-4	≤16W	72ft	115ft	180ft	290ft
	5-8	≤32W	42ft	67ft	106ft	165ft
	9-12	≤48W	28ft	44ft	70ft	112ft
	13-16	≤54W	20ft	33ft	52ft	84ft
15W	1-20	≤80W	16ft	26ft	41ft	66ft
	1	≤16W	72ft	115ft	180ft	290ft
	2	≤32W	42ft	67ft	106ft	165ft
	3	≤48W	28ft	44ft	70ft	112ft
4	≤54W	20ft	33ft	52ft	84ft	

DART ROUND SMALL REMOTE

9 - EXTERNAL OPTICAL ACCESSORIES (OPTIONAL)

MAXIMUM OF TWO ACCESSORIES PER FIXTURE.

Blade Light Linear Spread Lens. PMMA holographic filter.
Part No. **1E4002 (*)**

Anti glare louver with removable baffles for different levels of glare control. Powder coat stainless steel. Cutoff 103°. **Not compatible with 1E4003, 1E4004 or 1E4057.**
Part No. **1E4005 (*)**

Asymmetric snoot. Powder coated stainless steel. Cutoff 53°. **Not compatible with 1E4004, 1E4005 or 1E4057.**
Part No. **1E4003 (*)**

Symmetric snoot. Powder coated stainless steel. Cutoff 109°. **Not compatible with 1E4003, 1E4005 or 1E4057.**
Part No. **1E4004 (*)**

Symmetric super snoot. Powder coated stainless steel. Cutoff 53°. **Not compatible with 1E4003, 1E4004 or 1E4005.**
Part No. **1E4057 (*)**

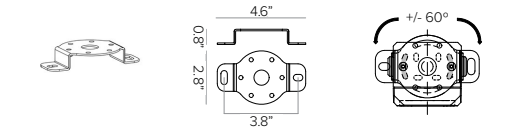
● Ferrite Dark Grey (Default) ● Heritage Brown (HB)* ● Bronze (BZ)* ● White (WT)* ● Black (BT)* ● Sandstone Grey (SG)*

**Add suffix to end of number to identify finish (EX. 1E3015HB)*

DART ROUND SMALL REMOTE

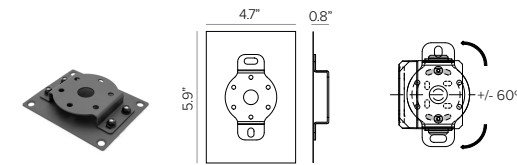
10 - INSTALLATION ACCESSORIES (OPTIONAL)

MAXIMUM OF ONE ACCESSORY PER FIXTURE



Rotational bracket for surface installation. Powder coated stainless steel.

Part No. **1E3015 (*)**

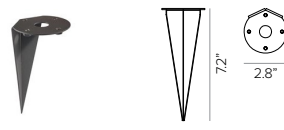


Back plate with rotational bracket for surface mount installation. Powder coated stainless steel with Neoprene black foam. Included with 1E3015 and factory attached Stainless Steel black oxide bolts and locking nuts.

Part No. **1US3015 (*)**

- Ferrite Dark Grey (Default)
- Heritage Brown (HB)*
- Bronze (BZ)*
- White (WT)*
- Black (BT)*
- Sandstone Grey (SG)*

*Add suffix to end of number to identify finish (EX. 1E3015HB)



Earth spike. Powder coated stainless steel.

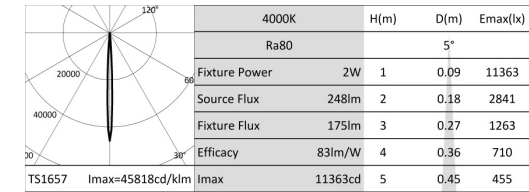
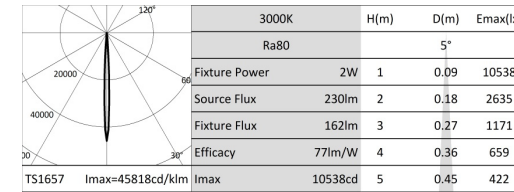
Part No. **1E3016 (*)**

DART ROUND SMALL REMOTE

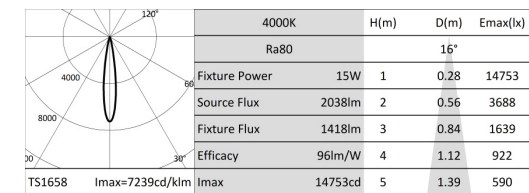
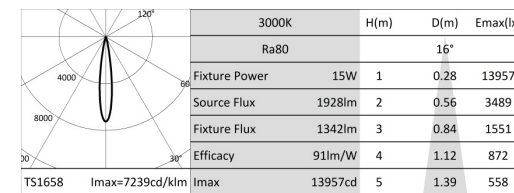
PHOTOMETRY

IES FILES WATTAGE AND EFFICIENCY CALCULATIONS BASED WITH SUPPLIED DRIVER

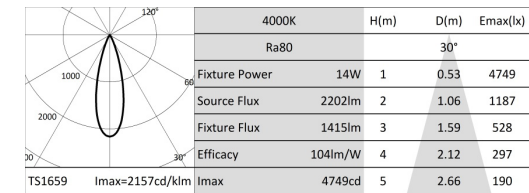
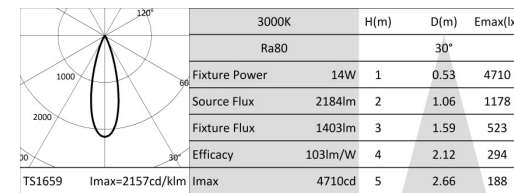
NARROW SPOT



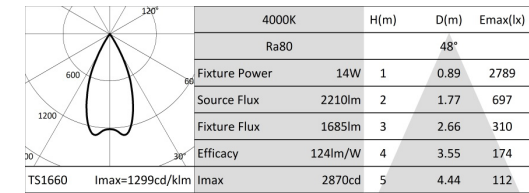
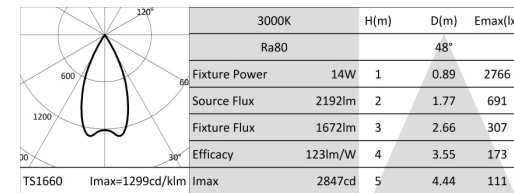
SPOT



FLOOD



MEDIUM WIDE FLOOD



VENDORS



Singage/Wayfinding/Art

Boston Building Wraps

Location: Boston MA

<https://bostonbuildingwraps.com/>

Details:

- Experience: The Hub, Boston
- Exterior Signage/Wayfinding
- Building coverings
- Custom outriggers
- Mural alternatives

Lighting

Illuminate New England

Location: Burlington MA

<https://illuminatene.com/eastern/>

THANK YOU