

## Table of Contents

Page:

2. Reference image of existing entry
3. Architectural drawing of proposed wood ceiling panel
4. Reference photos of proposed new doorbell
5. Specifications of proposed new doorbell
6. Reference photo and specifications of proposed new flush mount light
7. Methods for proposed stone surround paint removal

Continuing wood paneling from wood frame onto ceiling

Removal of faux paint, stripped down to original stone

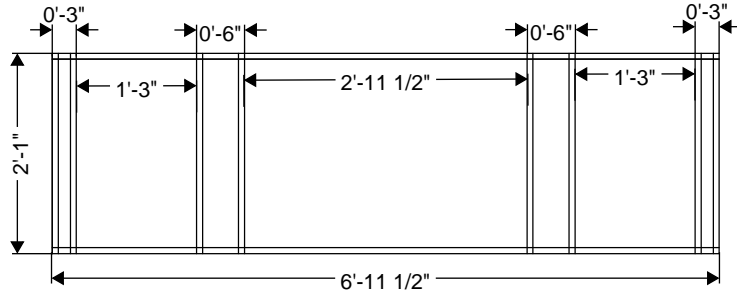
New security camera

Replacing of flush-mount with one that is 4" wider.

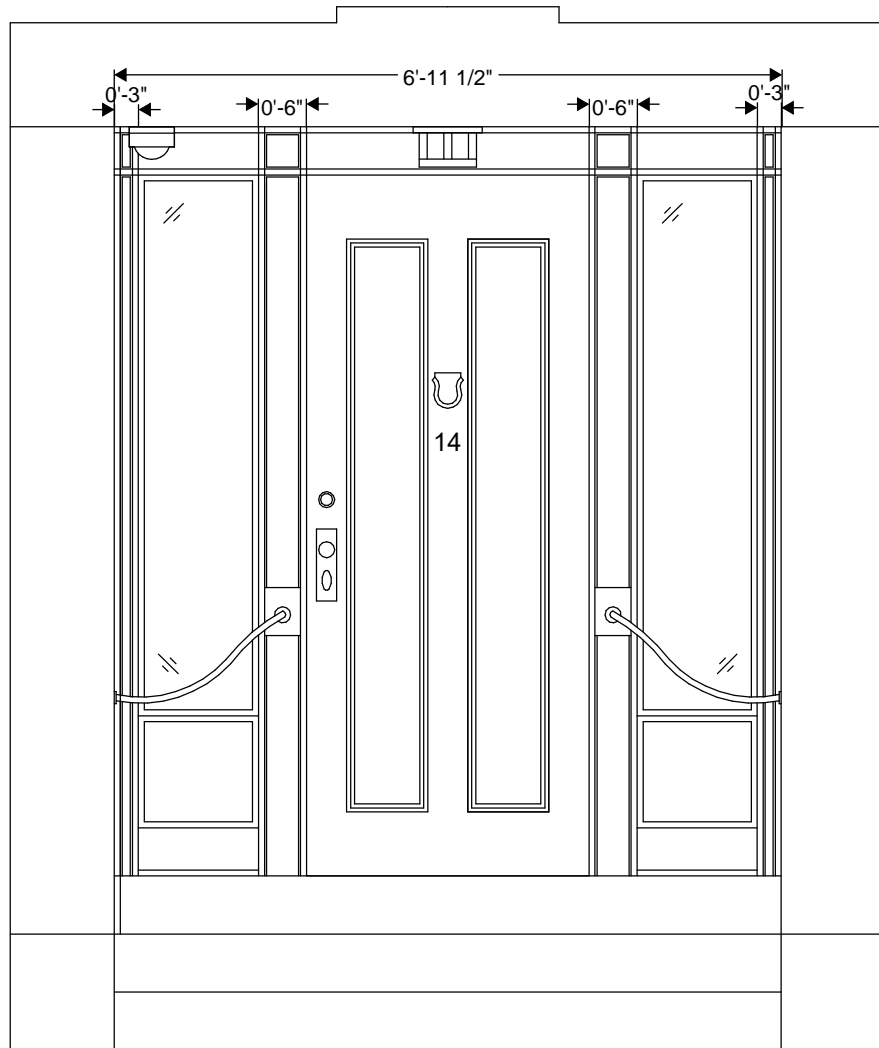
Removal of old door bell buzzer



14 Walnut Street,  
Boston, MA 02108



PROPOSED PLAN - ROOF



ELEVATION



the  
**HOLLAND  
 COMPANIES**

*Design & Construction*

519 ALBANY STREET  
 SUITE 200  
 BOSTON, MA 02118

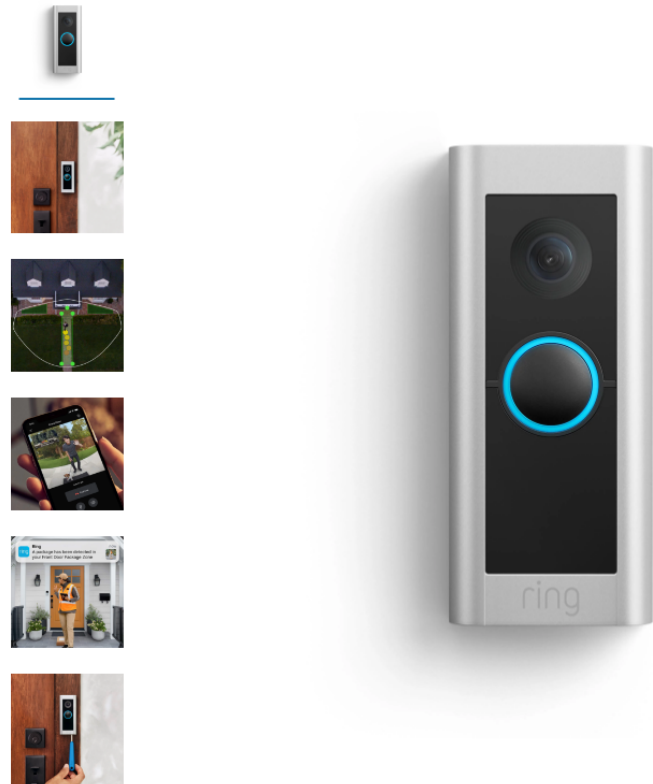
TEL 617.556.2900  
 FAX 617.556.2901

THEHOLLANDCOMPANIES.COM

**PROJECT NAME:**  
 14 WALNUT  
 STREET

**ISSUE DATE:**  
 09/11/23

SK1.01



# Tech Specs

## Size and Color

**Dimensions** 4.49 in. x 1.9 in. x .87 in. (114mm x 49mm x 22mm)

**Available Colors** Satin Nickel

## Features

**Video** 1536p HD+ Live Video, HDR, Live View, Color Night Vision

**Motion Detection** 3D Motion Detection with Bird's Eye View

**Field of View** 150° horizontal, 150° vertical

**Audio** Two-Way Talk with Audio+

## Power and Connectivity

**Power** Hardwired  
Standard doorbell system, [Ring plug-in adapter \(not included\)](#), or Ring hardwired transformer (not included) with 16-24 VAC/24VDC, 10-40VA max, 50/60Hz.  
No halogen or garden-lighting transformers.

**Internet Requirements** Requires a minimum upload speed of 1Mbps, but 2 Mbps is recommended for optimal performance

**Connectivity** 802.11 a/b/g/n/ac @2.4GHz and 5.0GHz

## Installation

**Estimated Installation Time** ~15 min

**Operating Conditions** -5°F to 120°F (-20°C to 50°C)

**Setup Requirement** Standard doorbell system, [Ring plug-in adapter \(not included\)](#), or Ring hardwired transformer (not included) with 16-24 VAC/24VDC, 30-40VA max, 50/60Hz.

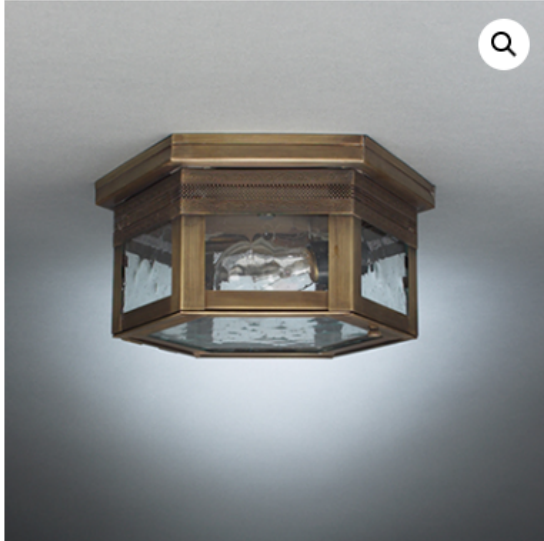
## General

**Box Includes** Video Doorbell Pro 2  
Satin Nickel Faceplate  
Pro Power Kit  
Installation Tools and Screws  
Corner Kit  
User Manual  
Security Sticker

**Warranty** [One-year limited warranty](#)



Home / All Exterior Lighting / Flush Mounts / Exterior Flush Mount Lighting / 1107 Flush Mount Light



## 1107 Flush Mount Light

Please call us at (978) 443-9412 for more information on this item or to place an order.

[Request More Info](#)

SKU: 504G-NE4-MED-CSG Category: [Exterior Flush Mount Lighting](#)

### Description

### Additional information

Reviews (0)

## Description

### Specifications:

- Dimensions: 10.5"W x 10.5"D x 5"H
- Bulb type: One 60 Watt Medium Base Bulb
- Suitable location: Damp
- Backplate: 10.5"W x 10.5"D
- Socket: MED
- Finishes & Glass available: click on the Additional Information tab

Please call us at (978) 443-9412 for more information on this item or to place an order.

### Description

### Additional information

Reviews (0)

## Additional information

### Finish

*Antique Brass, Dark Antique Brass, Dark Brass, Raw Brass, Verdi Gris*

### Glass

*Clear, Clear Seedy, Seedy Marine, Frosted, Corduroy, Caramel, White*

Existing stone surround at entry doors - proposed paint removal:

- Sanding with vacuums and power wash
- Area will be sectioned off with plastic