

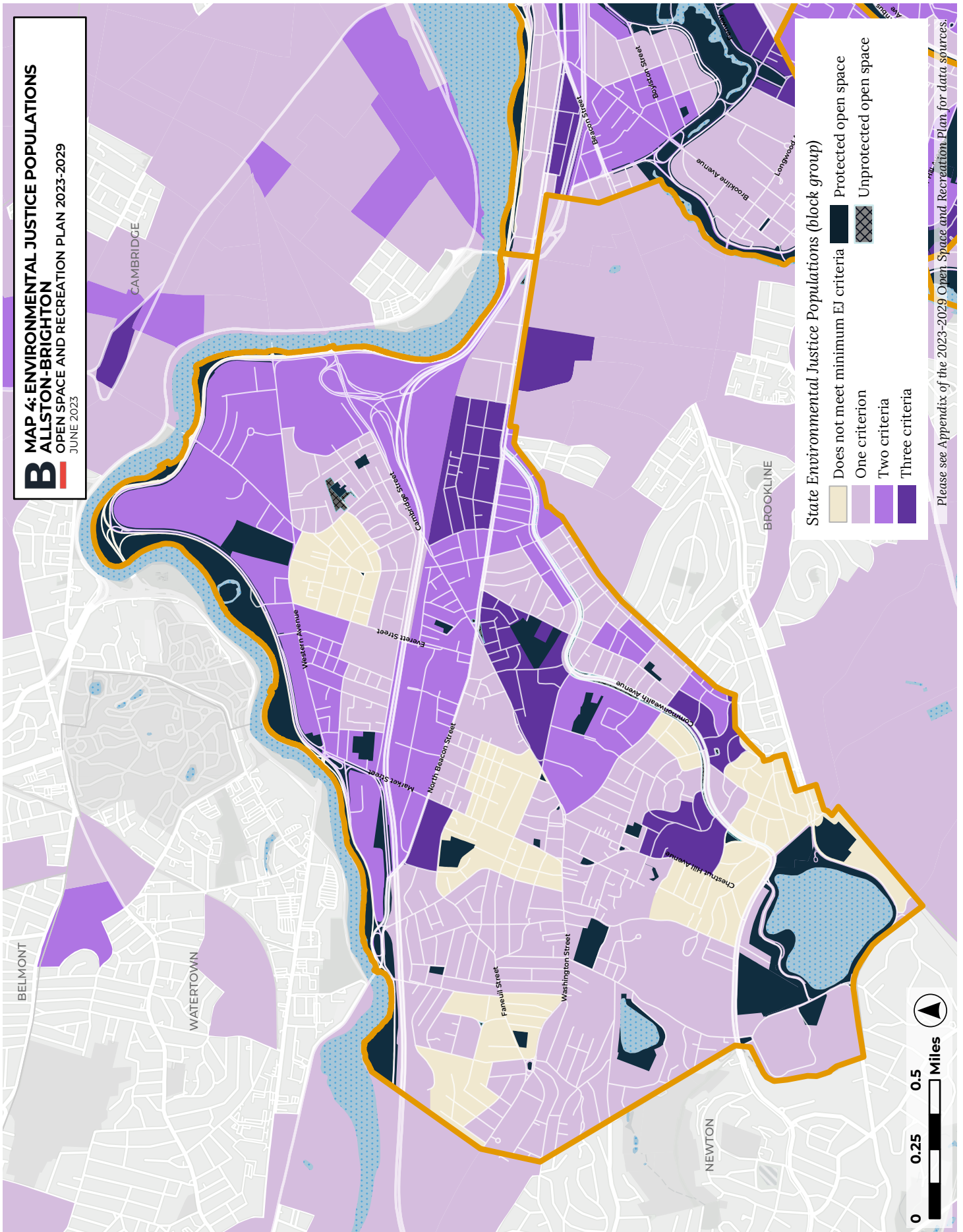
**2023-2029 OPEN SPACE AND RECREATION PLAN**

**ALLSTON-  
BRIGHTON**

NEIGHBORHOOD MAPS

---

**B** MAP 4: ENVIRONMENTAL JUSTICE POPULATIONS  
ALLSTON-BRIGHTON  
OPEN SPACE AND RECREATION PLAN 2023-2029  
JUNE 2023

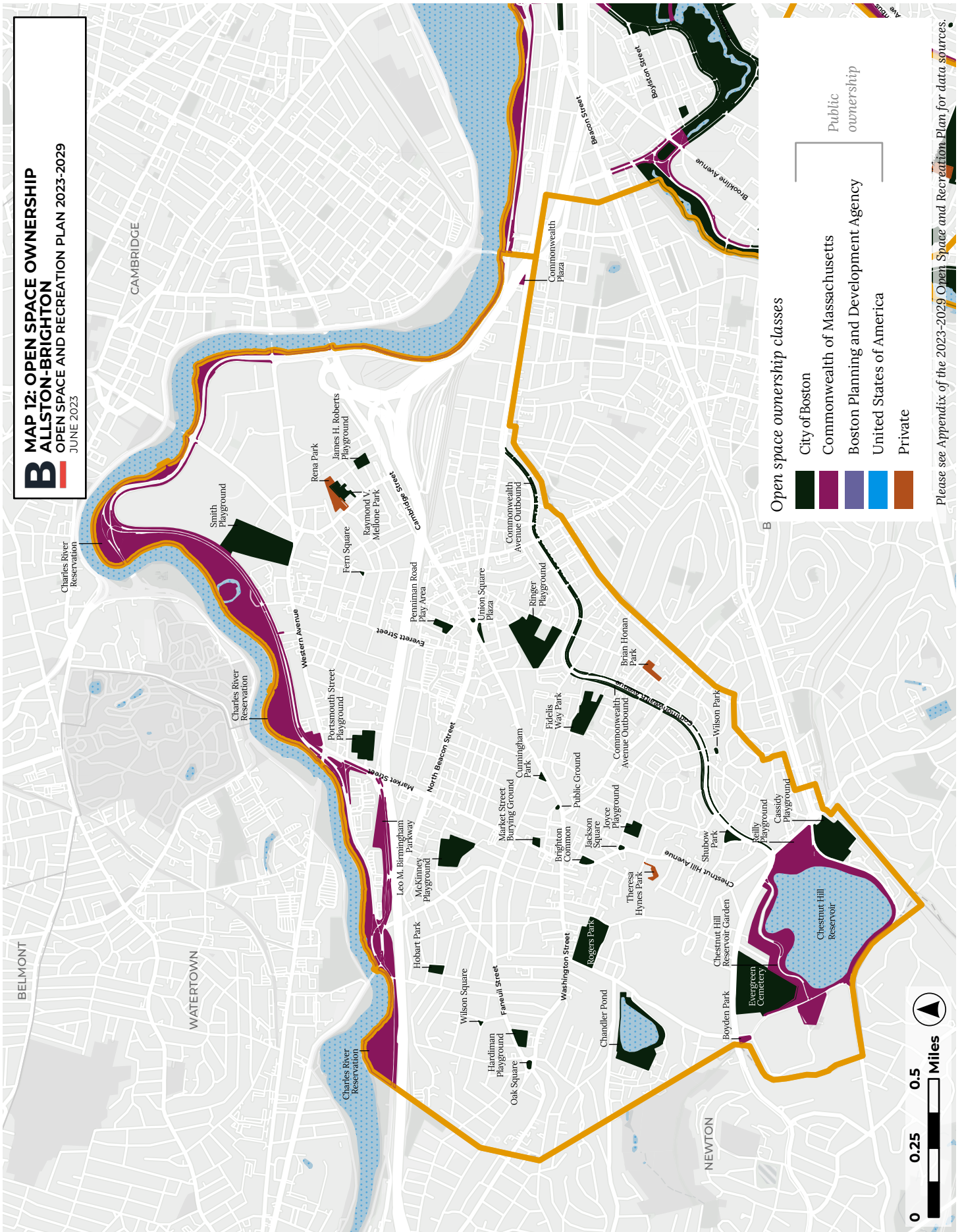


**State Environmental Justice Populations (block group)**

	Does not meet minimum EJ criteria		Protected open space
	One criterion		Unprotected open space
	Two criteria		
	Three criteria		

Please see Appendix of the 2023-2029 Open Space and Recreation Plan for data sources.

**B** MAP 12: OPEN SPACE OWNERSHIP  
**ALLSTON-BRIGHTON**  
 OPEN SPACE AND RECREATION PLAN 2023-2029  
 JUNE 2023



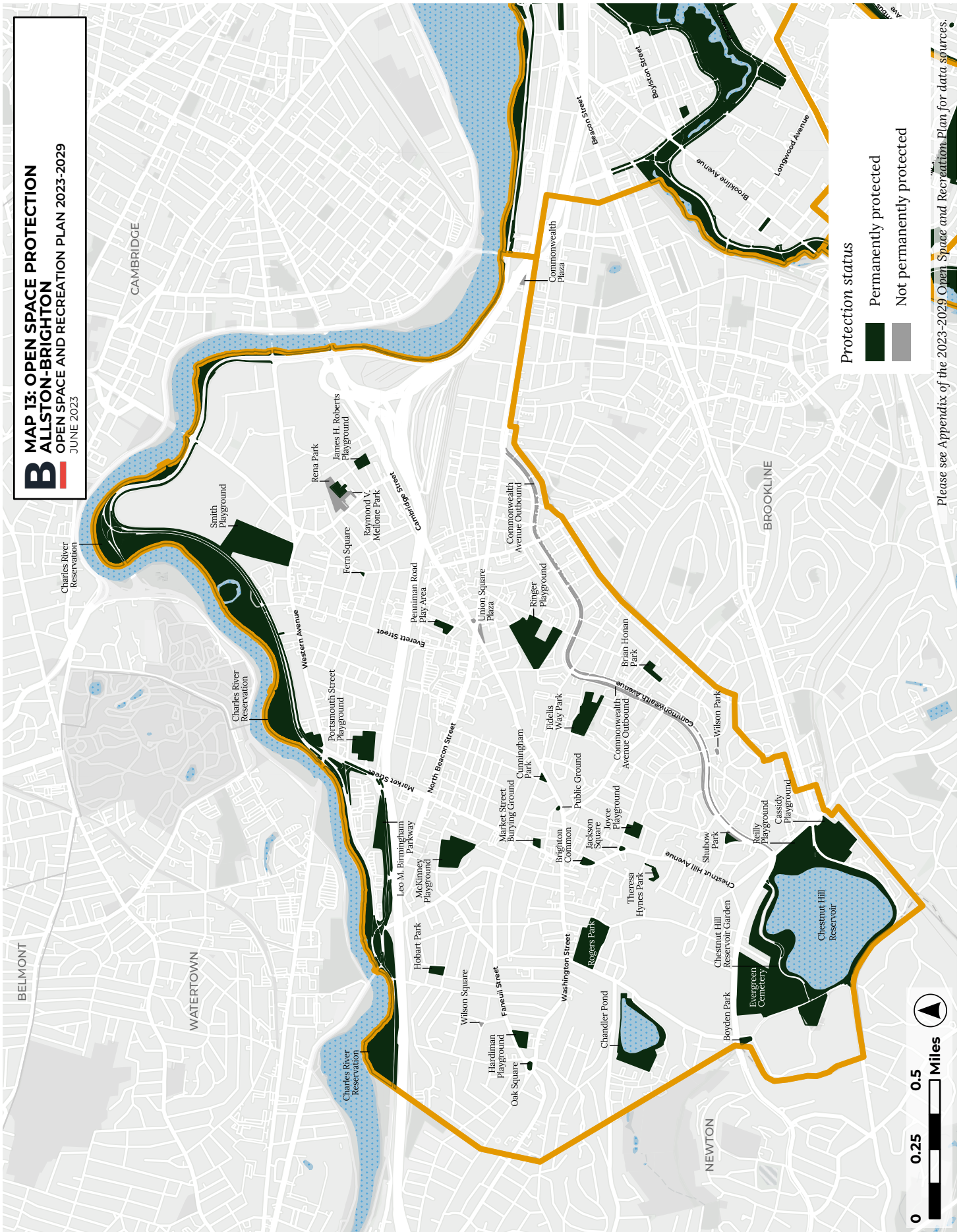
**Open space ownership classes**

- City of Boston
- Commonwealth of Massachusetts
- Boston Planning and Development Agency
- United States of America
- Private

Please see Appendix of the 2023-2029 Open Space and Recreation Plan for data sources.



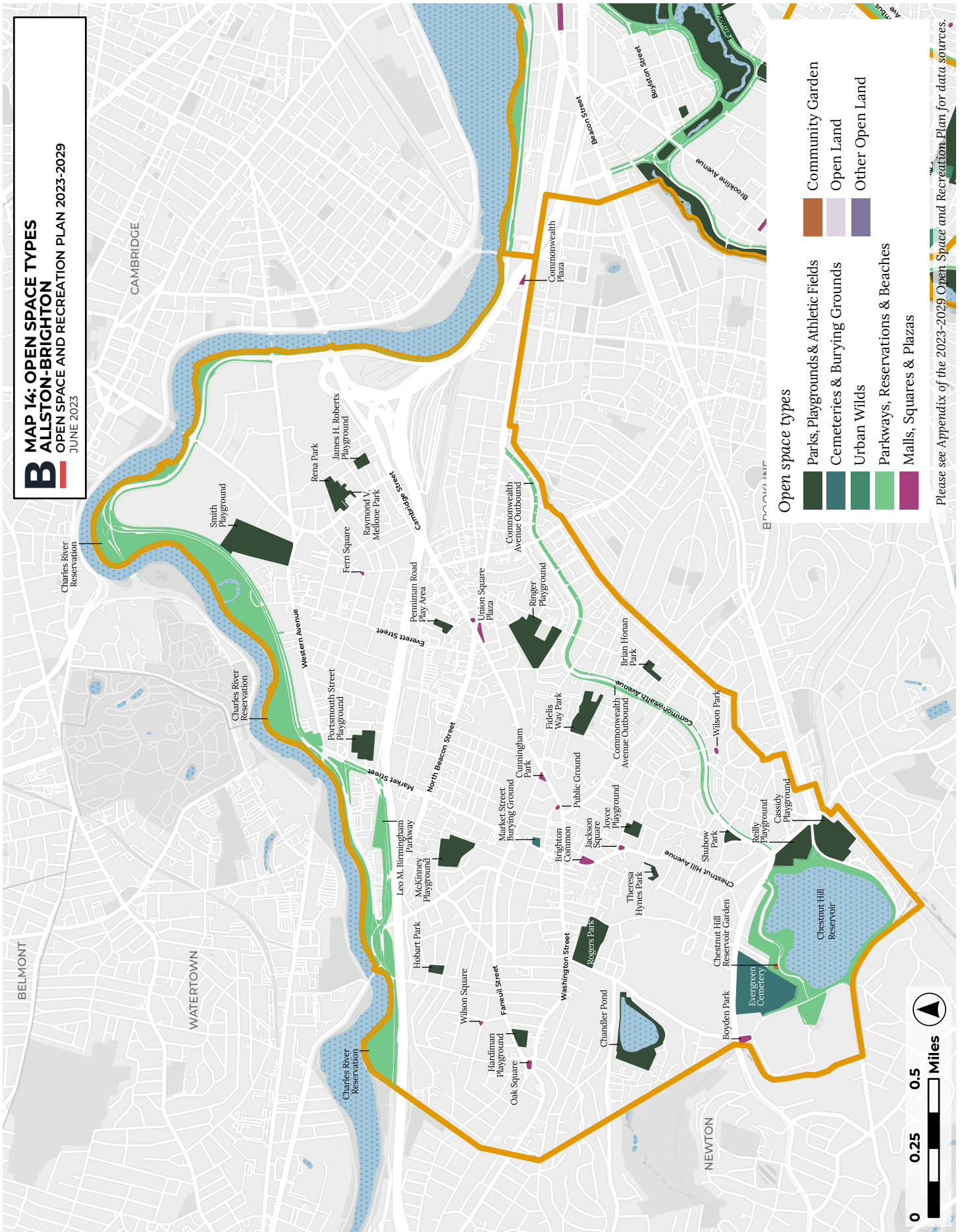
**B** MAP 13: OPEN SPACE PROTECTION  
ALLSTON-BRIGHTON  
OPEN SPACE AND RECREATION PLAN 2023-2029  
JUNE 2023



Please see Appendix of the 2023-2029 Open Space and Recreation Plan for data sources.



**B** MAP 14: OPEN SPACE TYPES  
**ALLSTON-BRIGHTON**  
 OPEN SPACE AND RECREATION PLAN 2023-2029  
 JUNE 2023



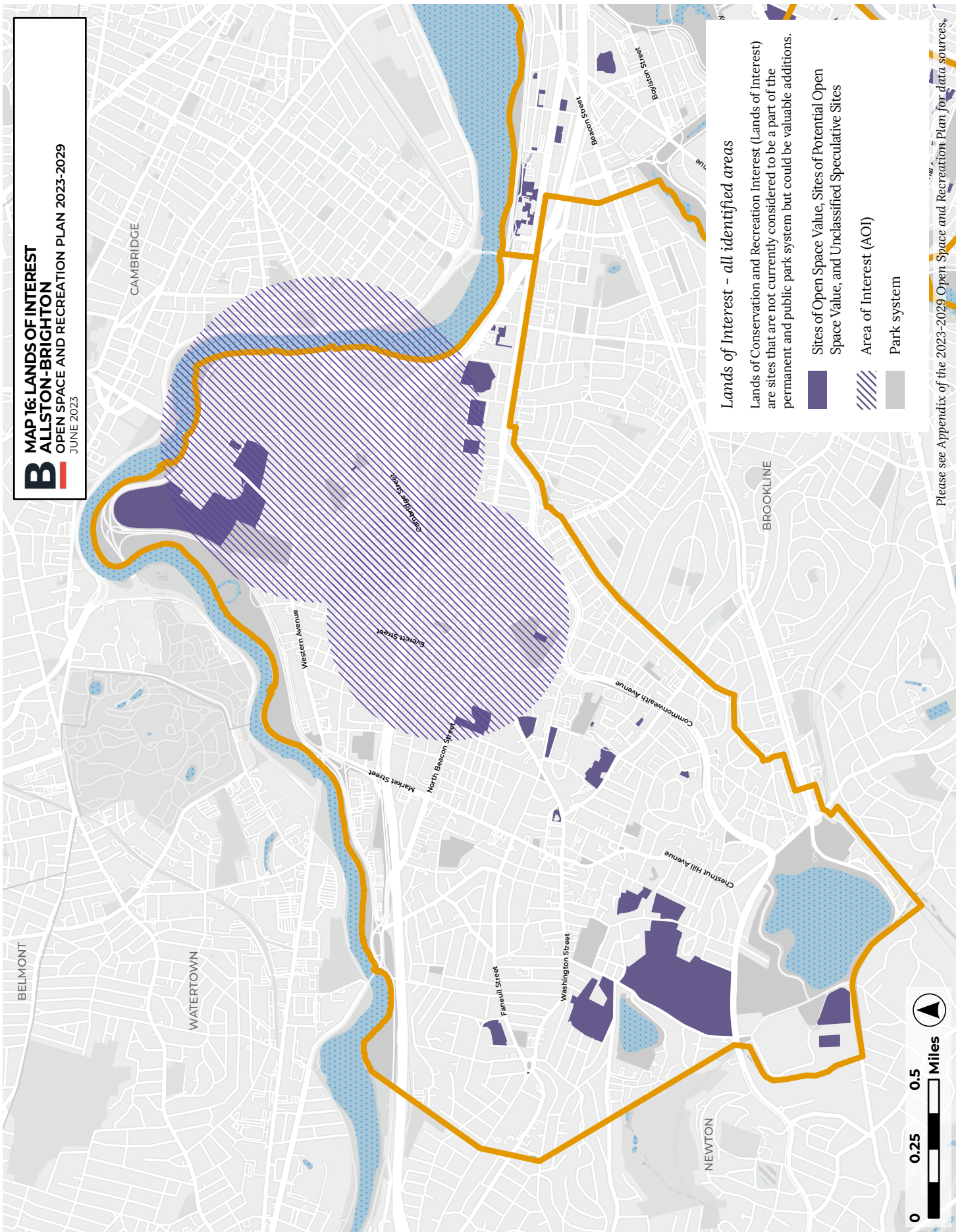
Open space types

- Parks, Playgrounds & Athletic Fields
- Cemeteries & Burying Grounds
- Urban Wilds
- Parkways, Reservations & Beaches
- Malls, Squares & Plazas
- Community Garden
- Open Land
- Other Open Land

Please see Appendix of the 2023-2029 Open Space and Recreation Plan for data sources.



**B** MAP 16: LANDS OF INTEREST  
ALLSTON-BRIGHTON  
OPEN SPACE AND RECREATION PLAN 2023-2029  
JUNE 2023



**Lands of Interest - all identified areas**

Lands of Conservation and Recreation Interest (Lands of Interest) are sites that are not currently considered to be a part of the permanent and public park system but could be valuable additions.

Sites of Open Space Value, Sites of Potential Open Space Value, and Unclassified Speculative Sites

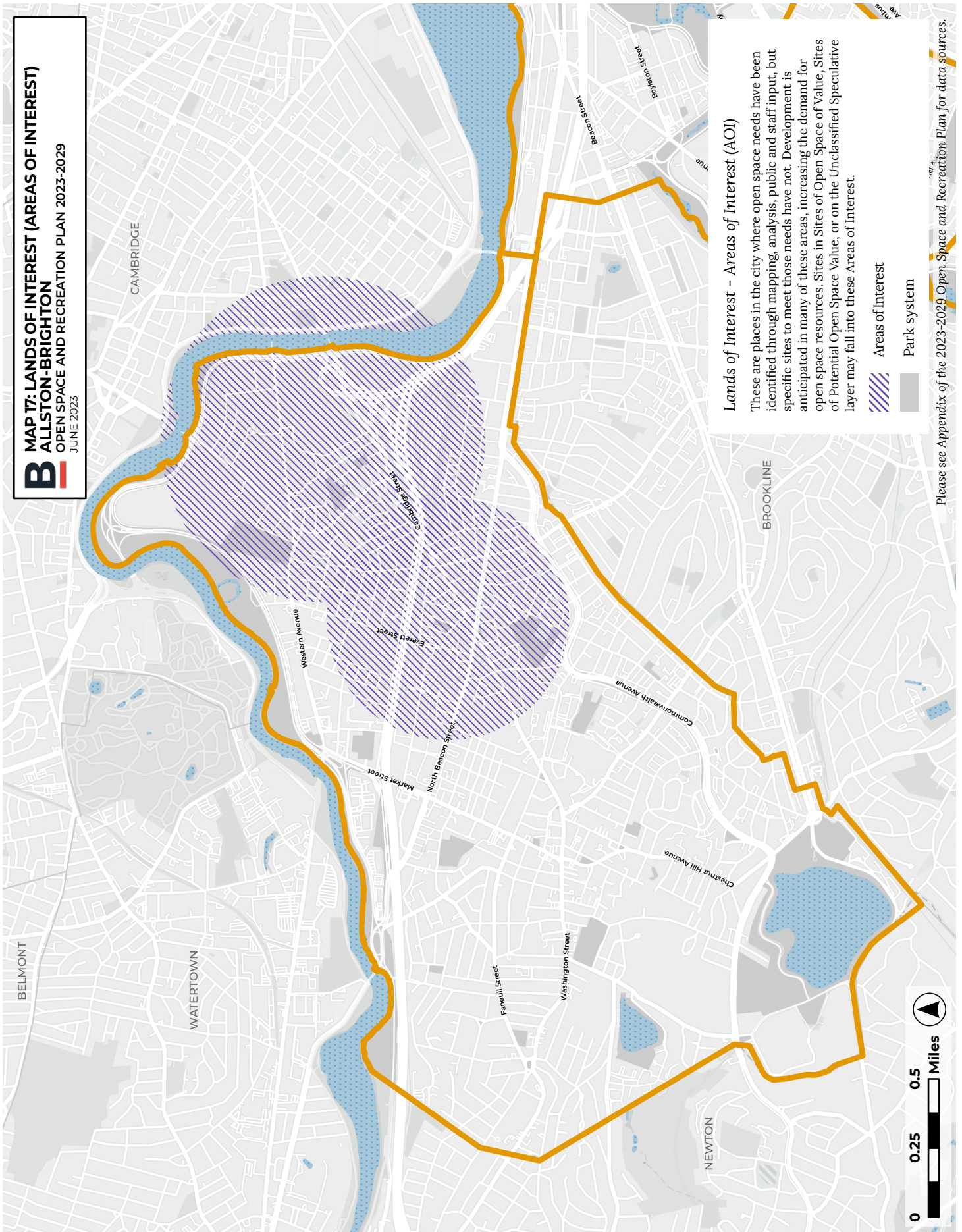
Area of Interest (AOI)

Park system

Please see Appendix of the 2023-2029 Open Space and Recreation Plan for data sources.



**B** MAP 17: LANDS OF INTEREST (AREAS OF INTEREST)  
ALLSTON-BRIGHTON  
OPEN SPACE AND RECREATION PLAN 2023-2029  
JUNE 2023



**Lands of Interest - Areas of Interest (AOI)**

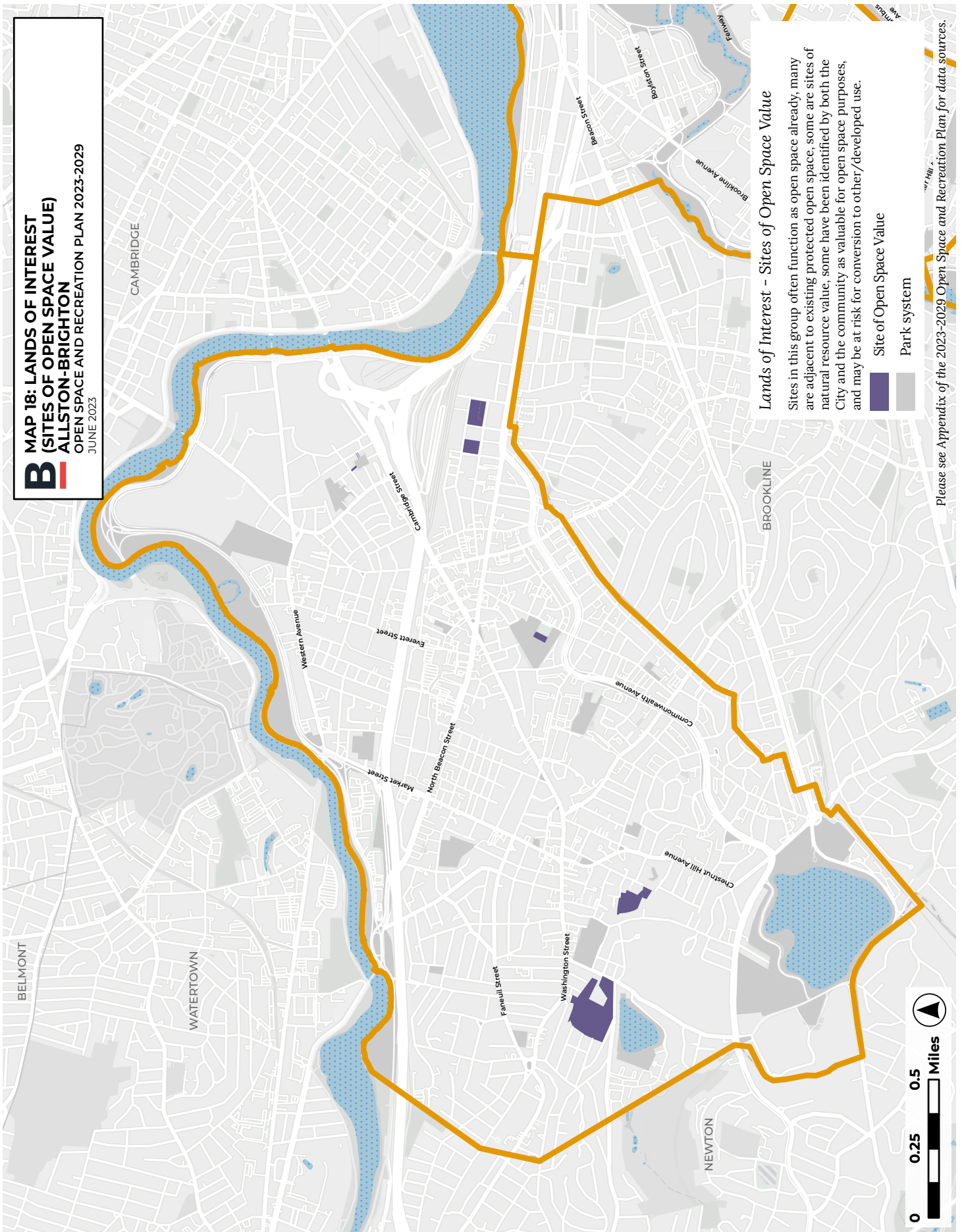
These are places in the city where open space needs have been identified through mapping, analysis, public and staff input, but specific sites to meet those needs have not. Development is anticipated in many of these areas, increasing the demand for open space resources. Sites in Sites of Open Space of Value, Sites of Potential Open Space Value, or on the Unclassified Speculative layer may fall into these Areas of Interest.

- Areas of Interest
- Park system

Please see Appendix of the 2023-2029 Open Space and Recreation Plan for data sources.



**B** MAP 18: LANDS OF INTEREST  
(SITES OF OPEN SPACE VALUE)  
ALLSTON-BRIGHTON  
OPEN SPACE AND RECREATION PLAN 2023-2029  
JUNE 2023



**Lands of Interest - Sites of Open Space Value**

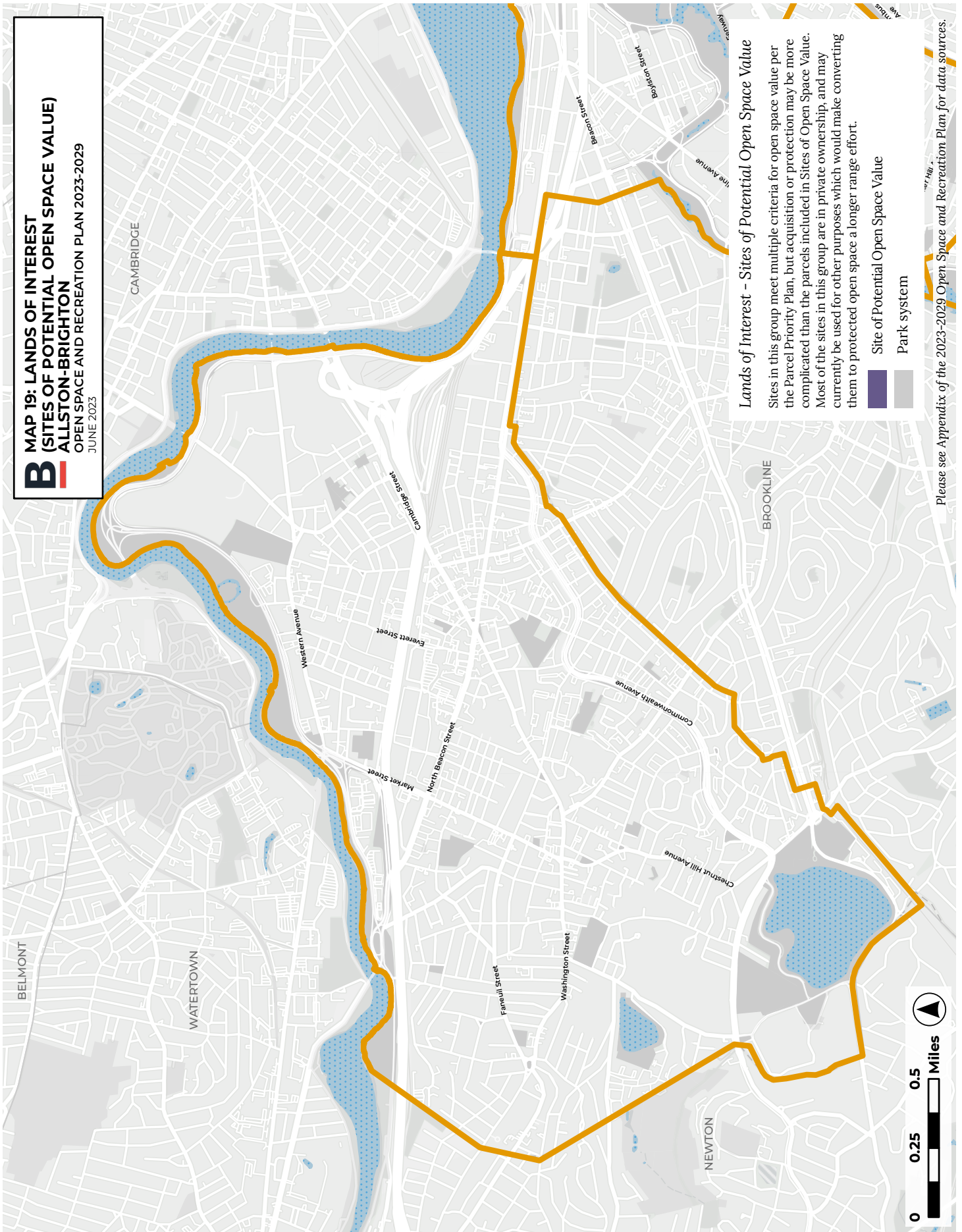
Sites in this group often function as open space already, many are adjacent to existing protected open space, some are sites of natural resource value, some have been identified by both the City and the community as valuable for open space purposes, and may be at risk for conversion to other/developed use.

- Site of Open Space Value
- Park system

Please see Appendix of the 2023-2029 Open Space and Recreation Plan for data sources.



**B** MAP 19: LANDS OF INTEREST  
(SITES OF POTENTIAL OPEN SPACE VALUE)  
ALLSTON-BRIGHTON  
OPEN SPACE AND RECREATION PLAN 2023-2029  
JUNE 2023

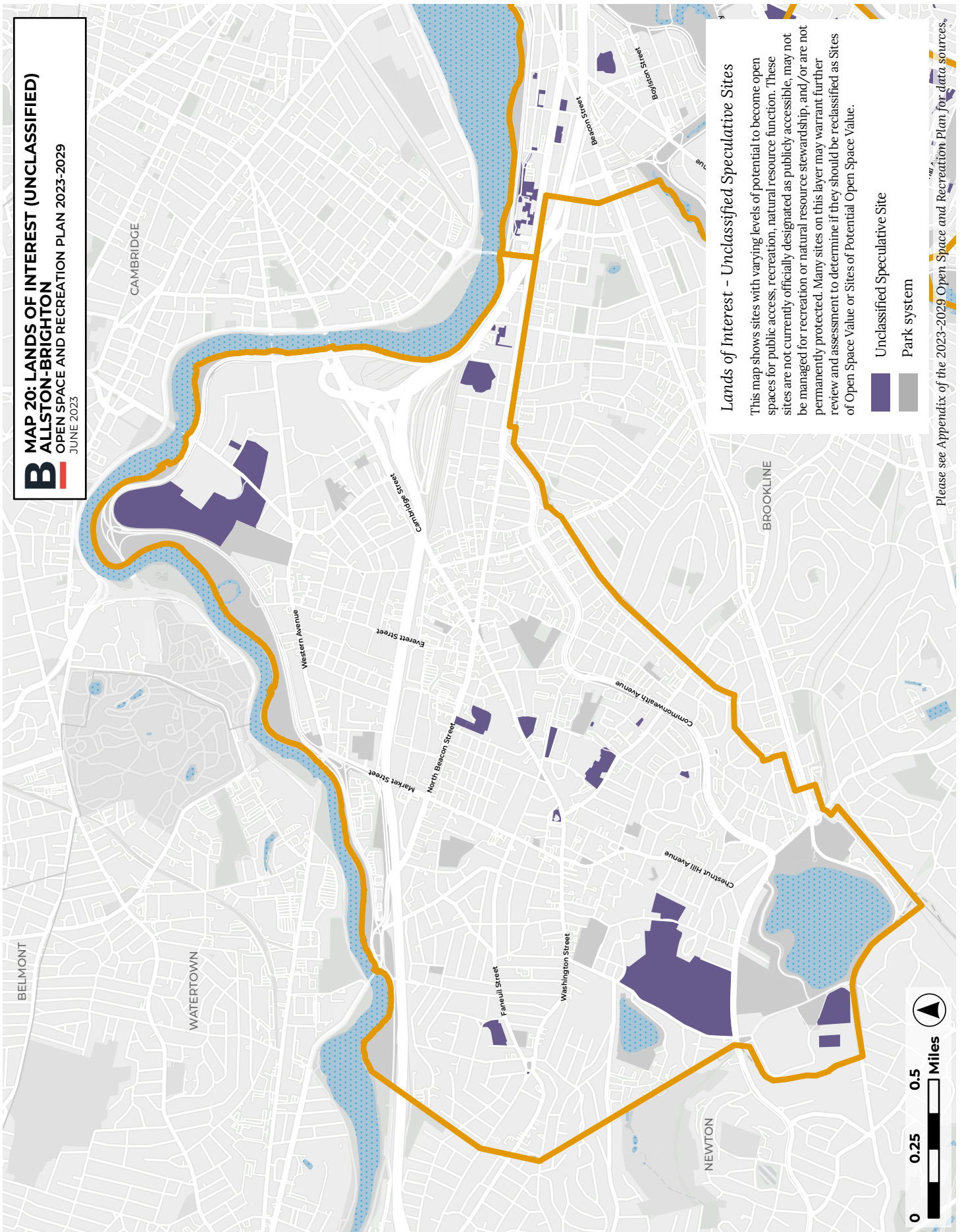


**Lands of Interest - Sites of Potential Open Space Value**  
Sites in this group meet multiple criteria for open space value per the Parcel Priority Plan, but acquisition or protection may be more complicated than the parcels included in Sites of Open Space Value. Most of the sites in this group are in private ownership, and may currently be used for other purposes which would make converting them to protected open space a longer range effort.

- Site of Potential Open Space Value
- Park system

Please see Appendix of the 2023-2029 Open Space and Recreation Plan for data sources.

**B** MAP 20: LANDS OF INTEREST (UNCLASSIFIED)  
ALLSTON-BRIGHTON  
OPEN SPACE AND RECREATION PLAN 2023-2029  
JUNE 2023



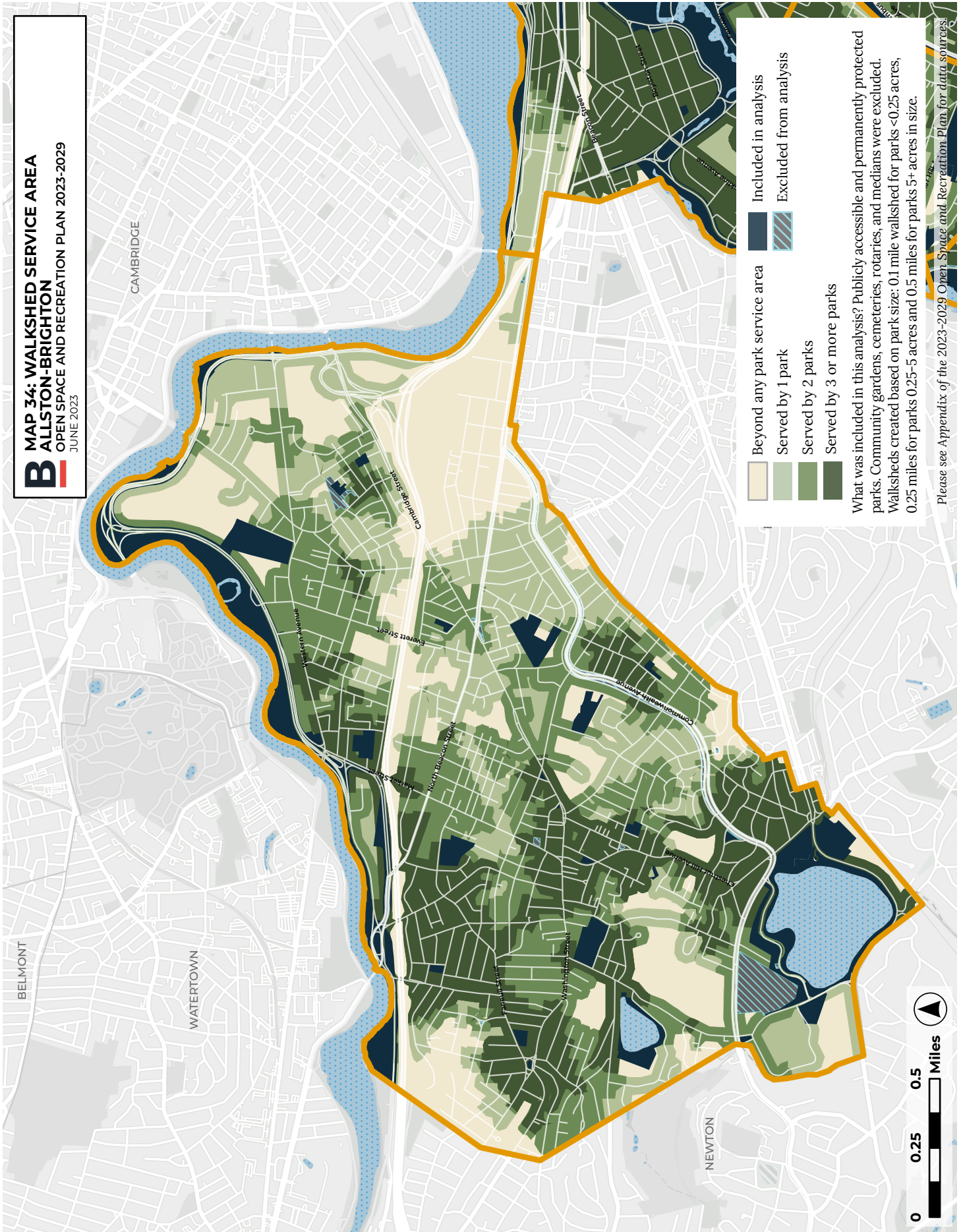
**Lands of Interest - Unclassified Speculative Sites**

This map shows sites with varying levels of potential to become open spaces for public access, recreation, natural resource function. These sites are not currently officially designated as publicly accessible, may not be managed for recreation or natural resource stewardship, and/or are not permanently protected. Many sites on this layer may warrant further review and assessment to determine if they should be reclassified as Sites of Open Space Value or Sites of Potential Open Space Value.

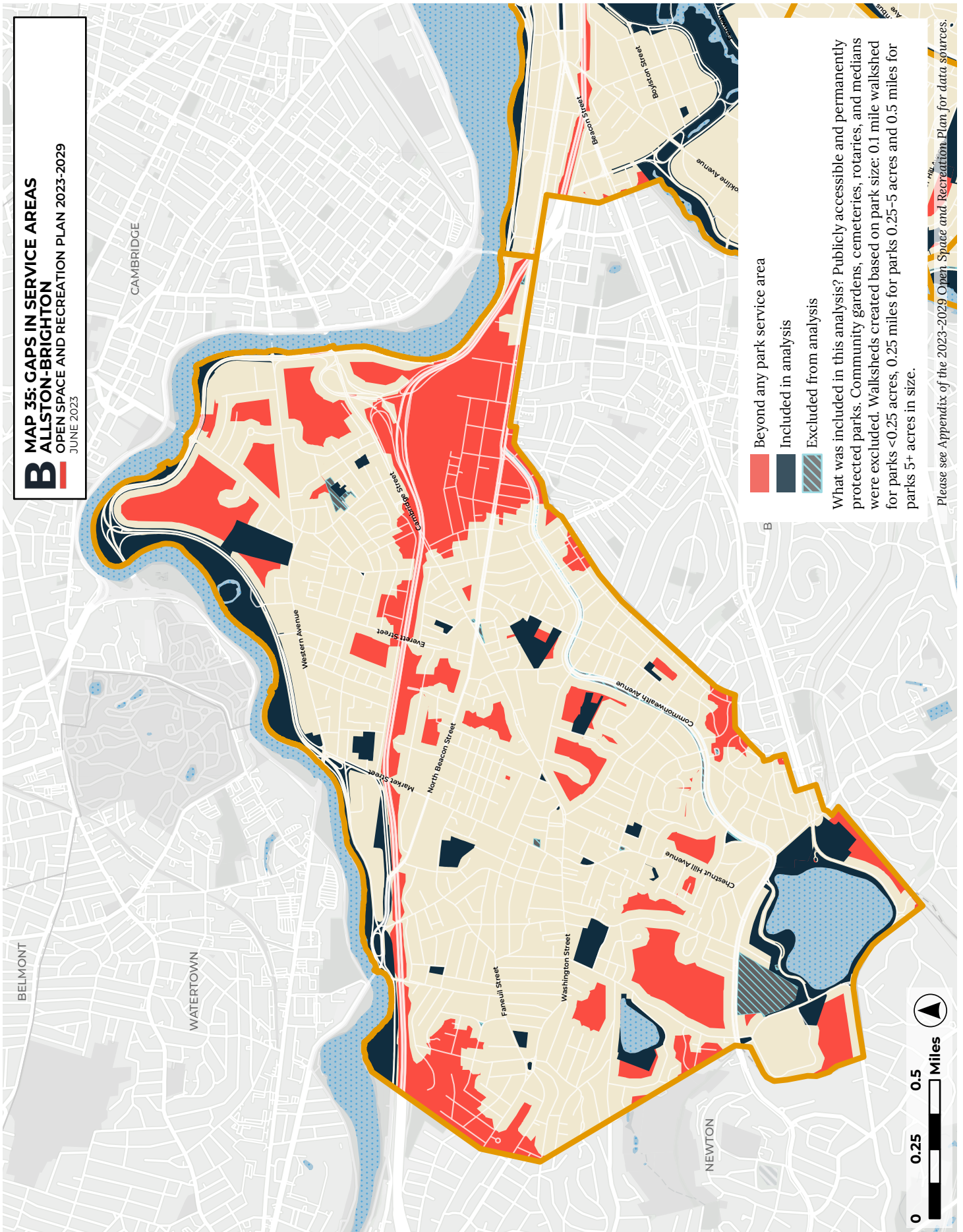
- Unclassified Speculative Site
- Park system

Please see Appendix of the 2023-2029 Open Space and Recreation Plan for data sources.



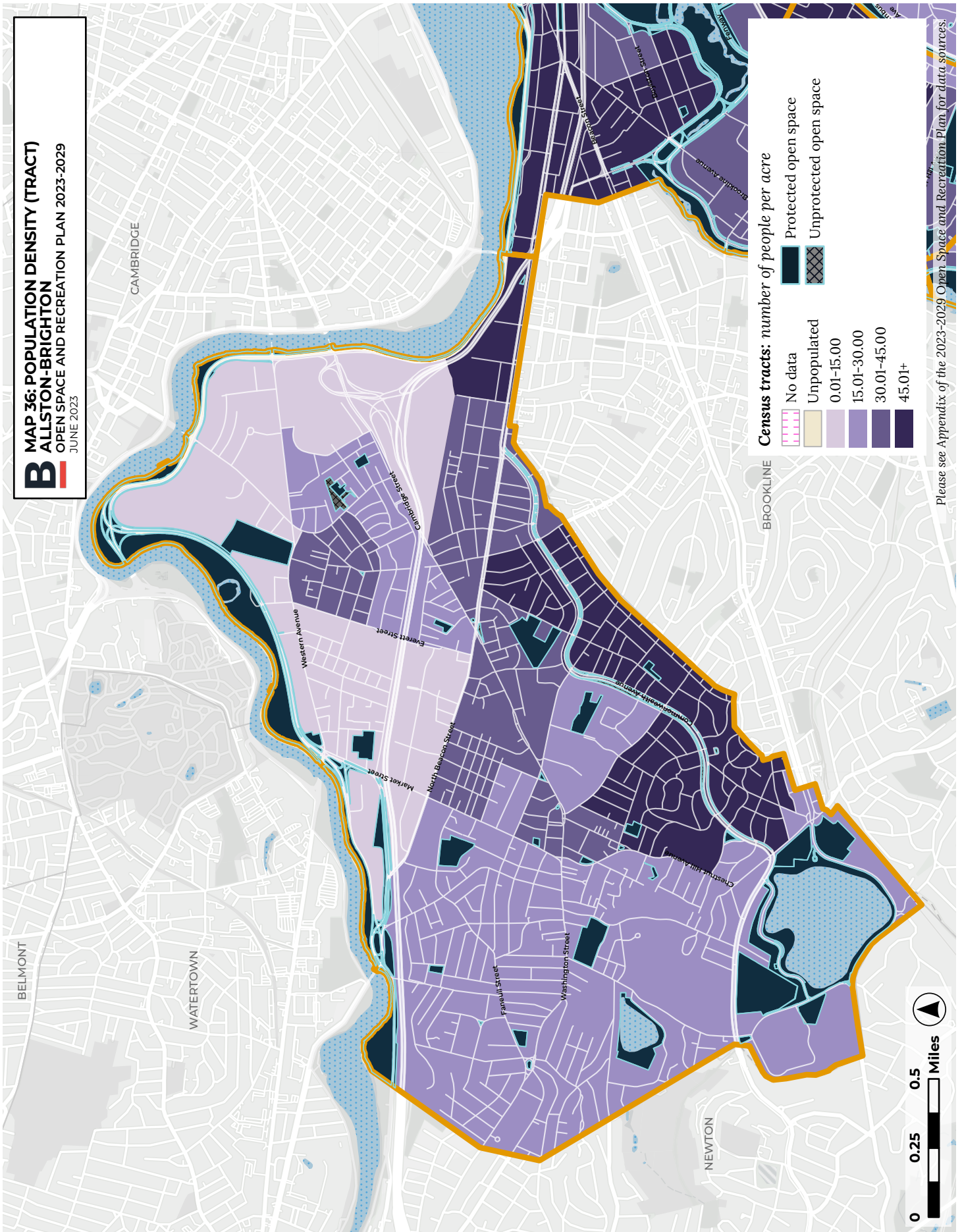


**B** MAP 35: GAPS IN SERVICE AREAS  
ALLSTON-BRIGHTON  
OPEN SPACE AND RECREATION PLAN 2023-2029  
JUNE 2023





**B** MAP 36: POPULATION DENSITY (TRACT)  
 ALLSTON-BRIGHTON  
 OPEN SPACE AND RECREATION PLAN 2023-2029  
 JUNE 2023



**Census tracts: number of people per acre**

	No data
	Unpopulated
	0.01-15.00
	15.01-30.00
	30.01-45.00
	45.01+

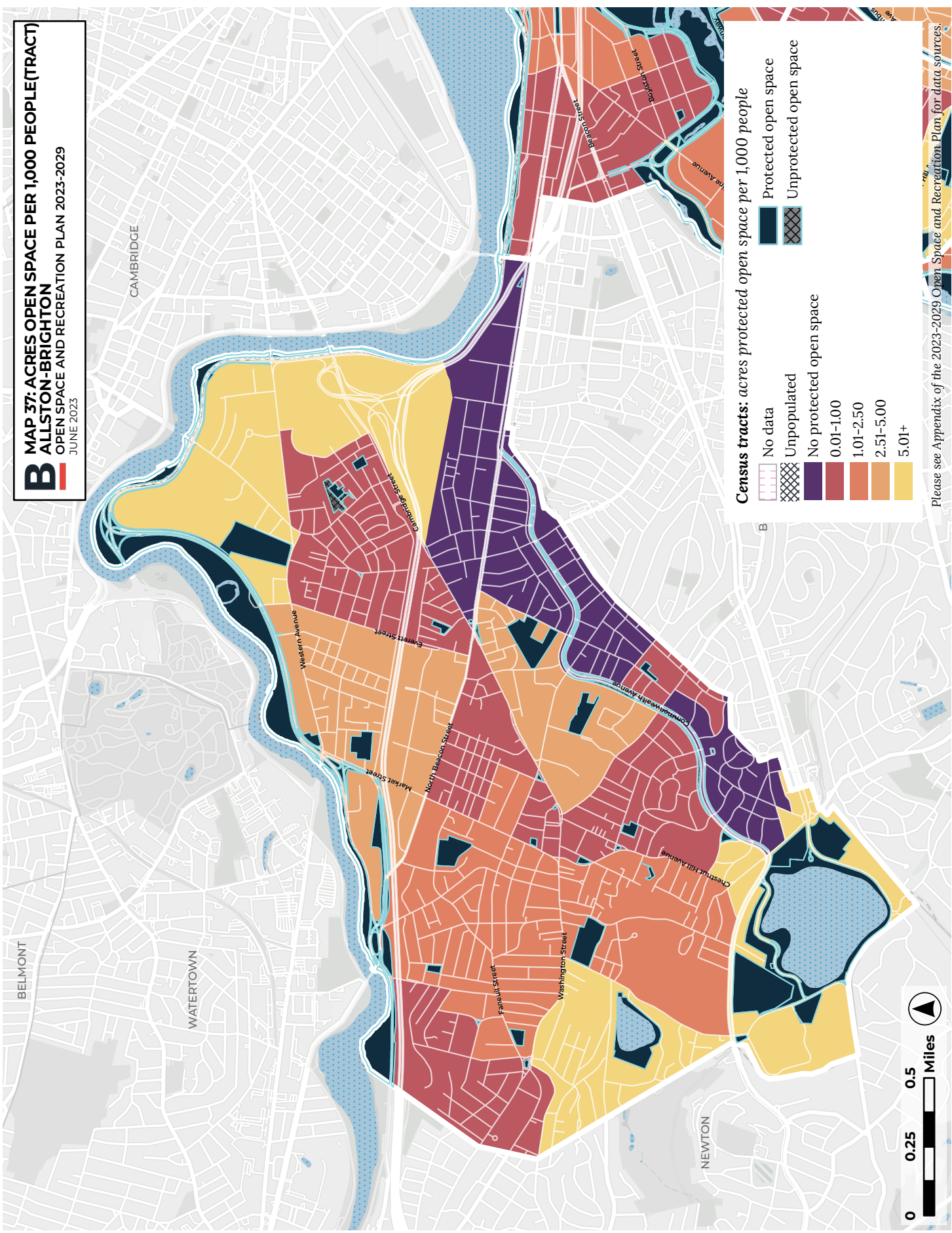
**Protected open space**

**Unprotected open space**



Please see Appendix of the 2023-2029 Open Space and Recreation Plan for data sources.

**B** MAP 37: ACRES OPEN SPACE PER 1,000 PEOPLE (TRACT)  
 ALLSTON-BRIGHTON  
 OPEN SPACE AND RECREATION PLAN 2023-2029  
 JUNE 2023



**Census tracts: acres protected open space per 1,000 people**

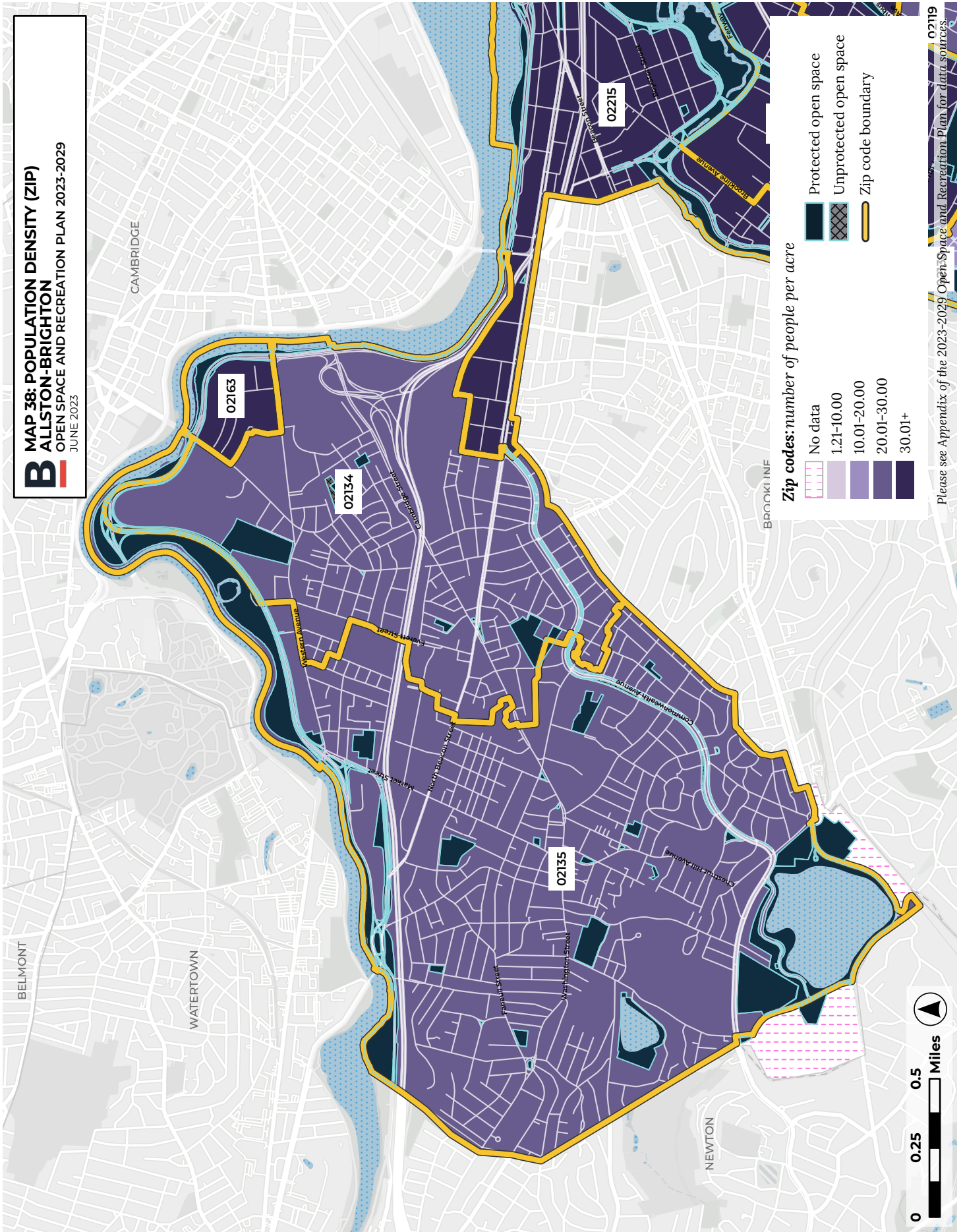
[Dark Blue Box]	Protected open space
[Cross-hatched Box]	Unprotected open space
[White Box]	No data
[Cross-hatched Box]	Unpopulated
[Dark Purple Box]	No protected open space
[Red Box]	0.01-1.00
[Orange Box]	1.01-2.50
[Light Orange Box]	2.51-5.00
[Yellow Box]	5.01+

Please see Appendix of the 2023-2029 Open Space and Recreation Plan for data sources.

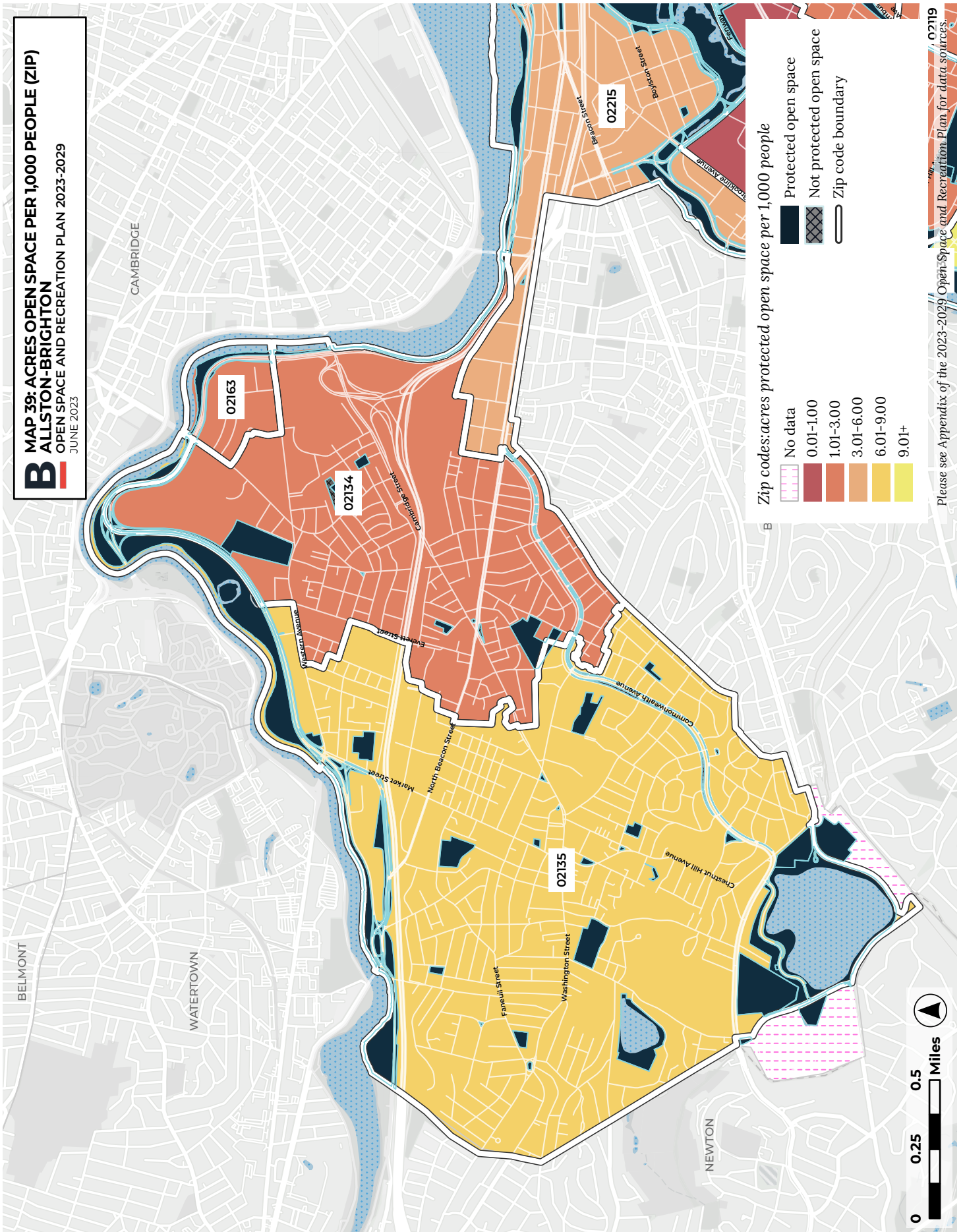




**B** MAP 38: POPULATION DENSITY (ZIP)  
ALLSTON-BRIGHTON  
OPEN SPACE AND RECREATION PLAN 2023-2029  
JUNE 2023



**B** MAP 39: ACRES OPEN SPACE PER 1,000 PEOPLE (ZIP)  
 ALLSTON-BRIGHTON  
 OPEN SPACE AND RECREATION PLAN 2023-2029  
 JUNE 2023



Please see Appendix of the 2023-2029 Open Space and Recreation Plan for data sources.