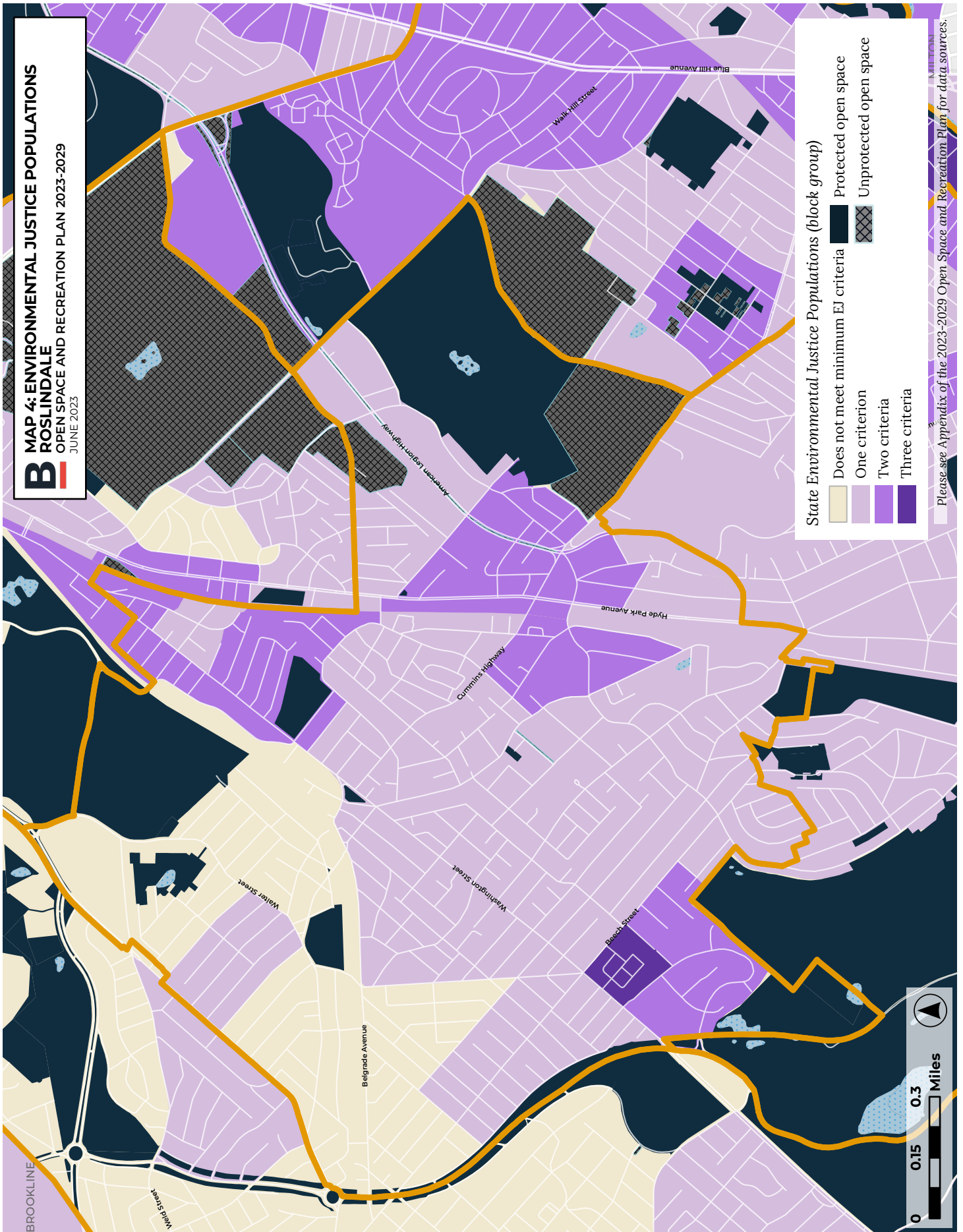


**2023-2029 OPEN SPACE AND RECREATION PLAN**

**ROSLINDALE**

**NEIGHBORHOOD MAPS**

---



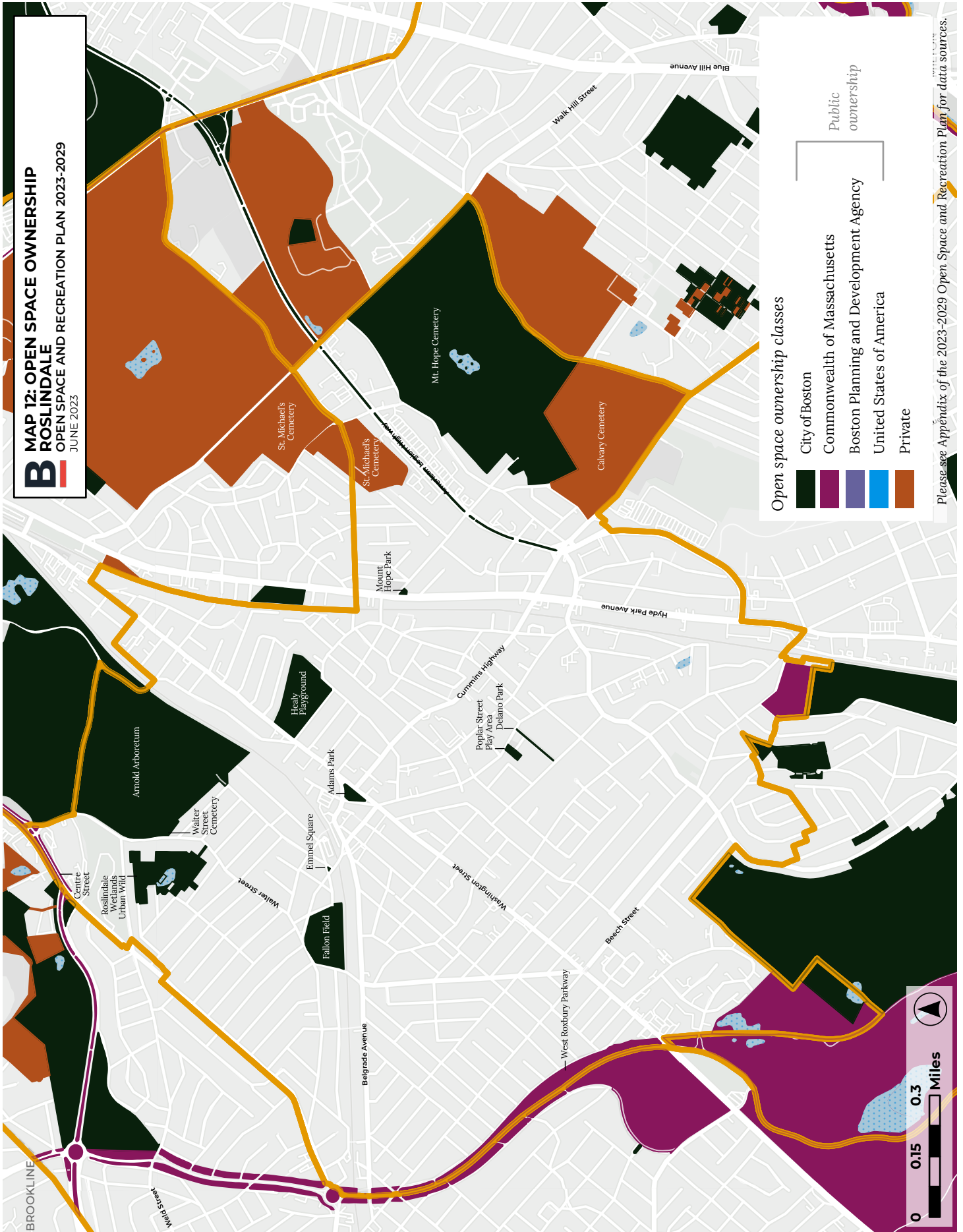
**B** MAP 4: ENVIRONMENTAL JUSTICE POPULATIONS  
ROSLINDALE  
OPEN SPACE AND RECREATION PLAN 2023-2029  
JUNE 2023

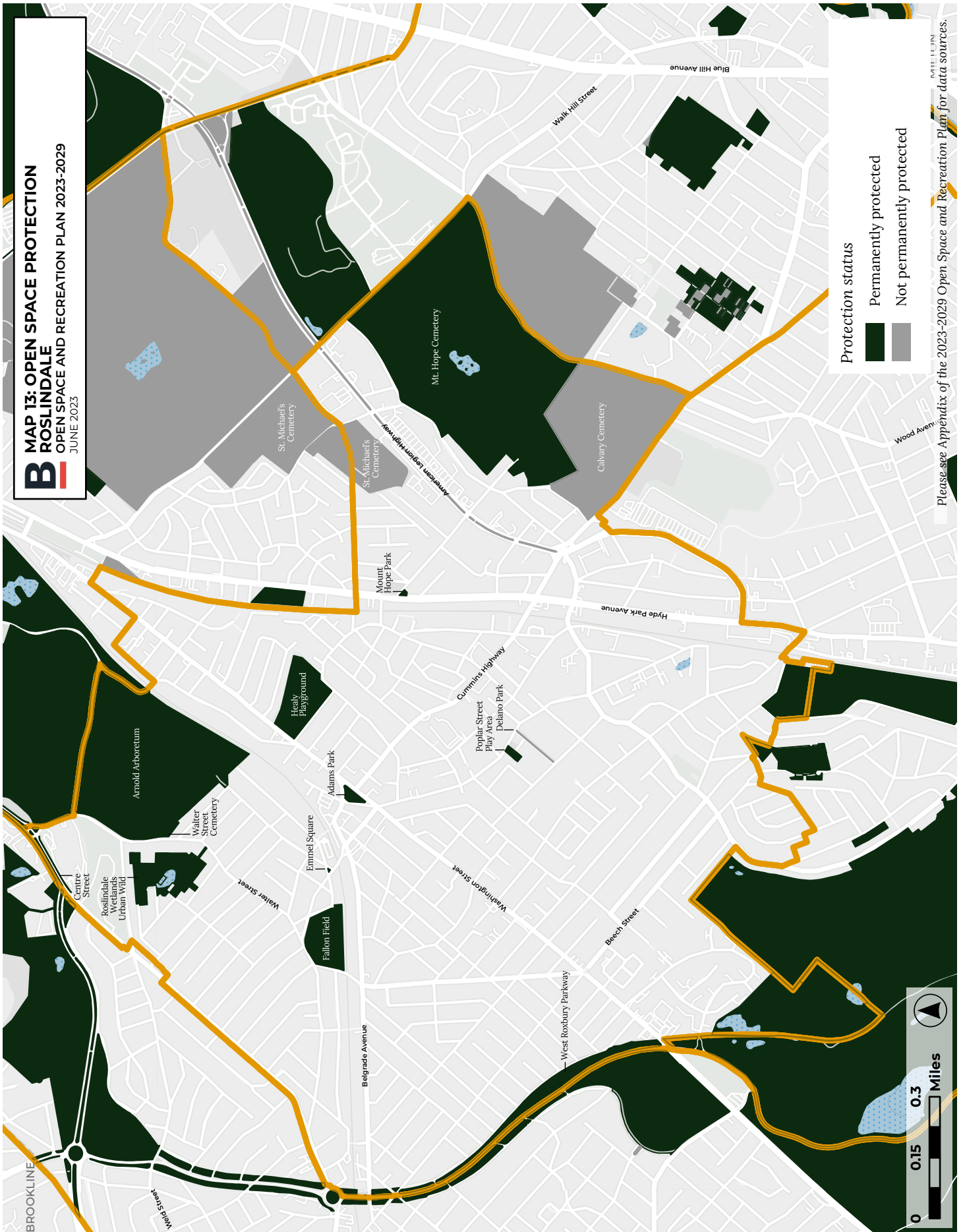
**State Environmental Justice Populations (block group)**

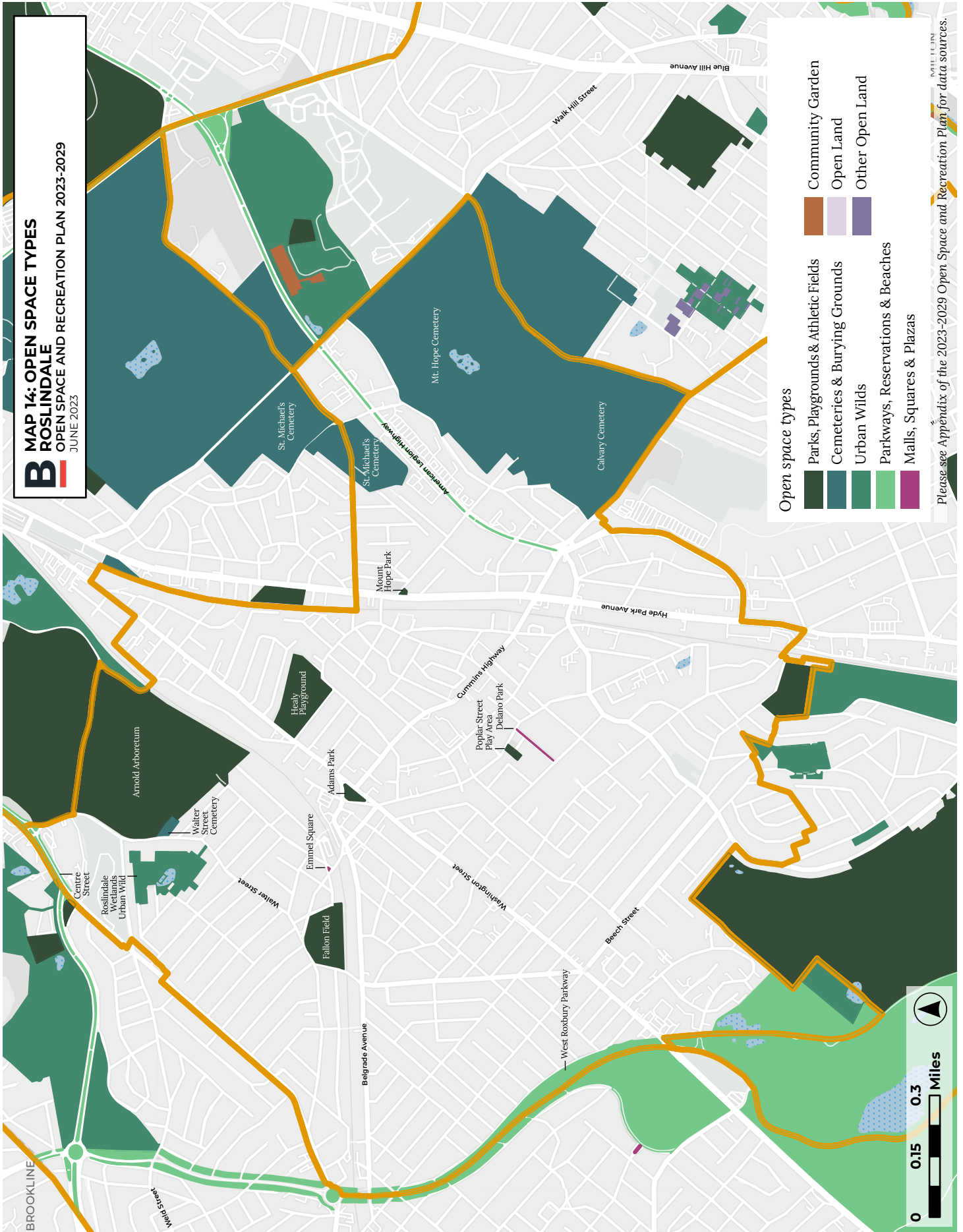
Does not meet minimum EJ criteria	Protected open space
One criterion	Unprotected open space
Two criteria	
Three criteria	

Please see Appendix of the 2023-2029 Open Space and Recreation Plan for data sources.

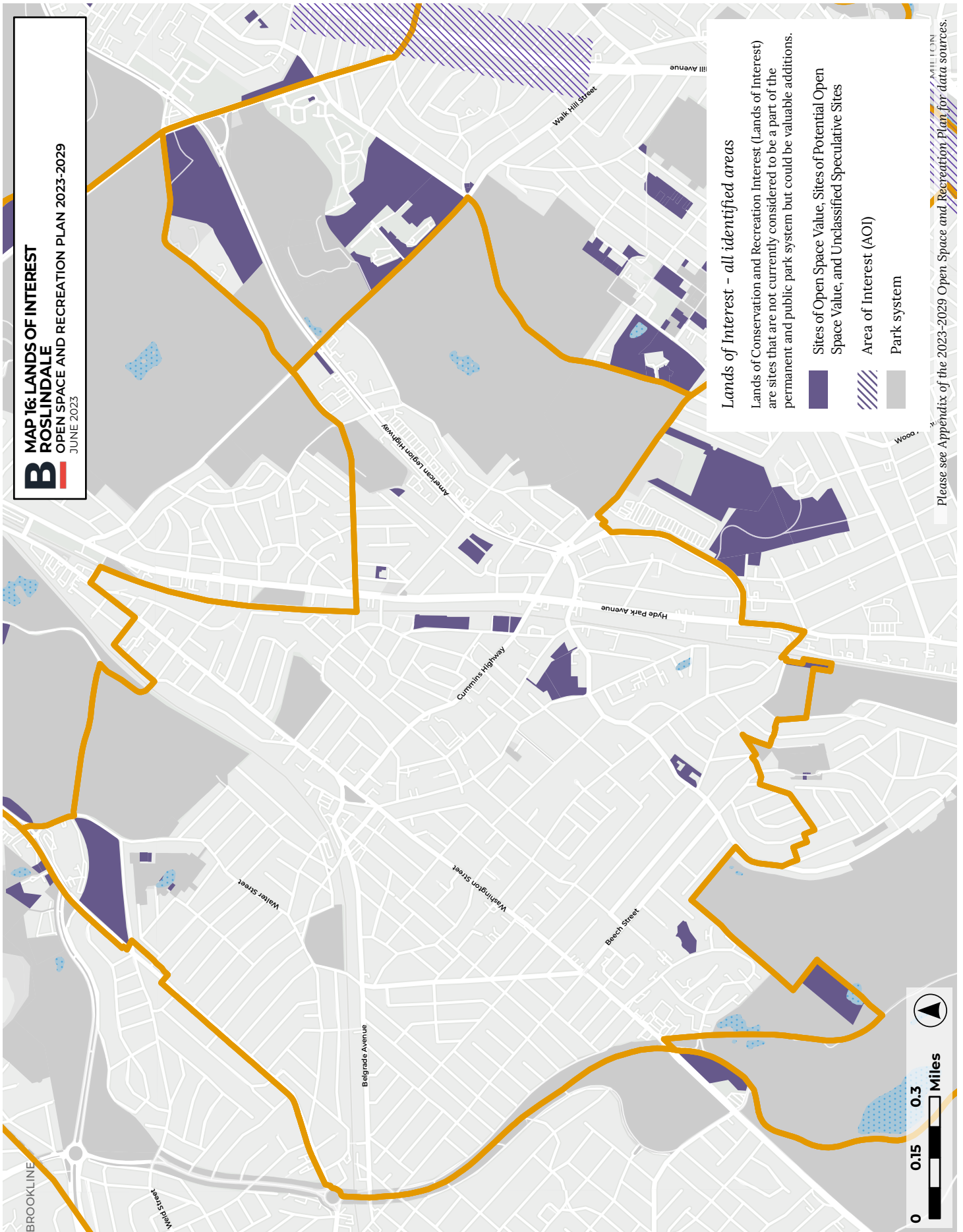
0 0.15 0.3 Miles







**B** MAP 16: LANDS OF INTEREST  
ROSLINDALE  
OPEN SPACE AND RECREATION PLAN 2023-2029  
JUNE 2023

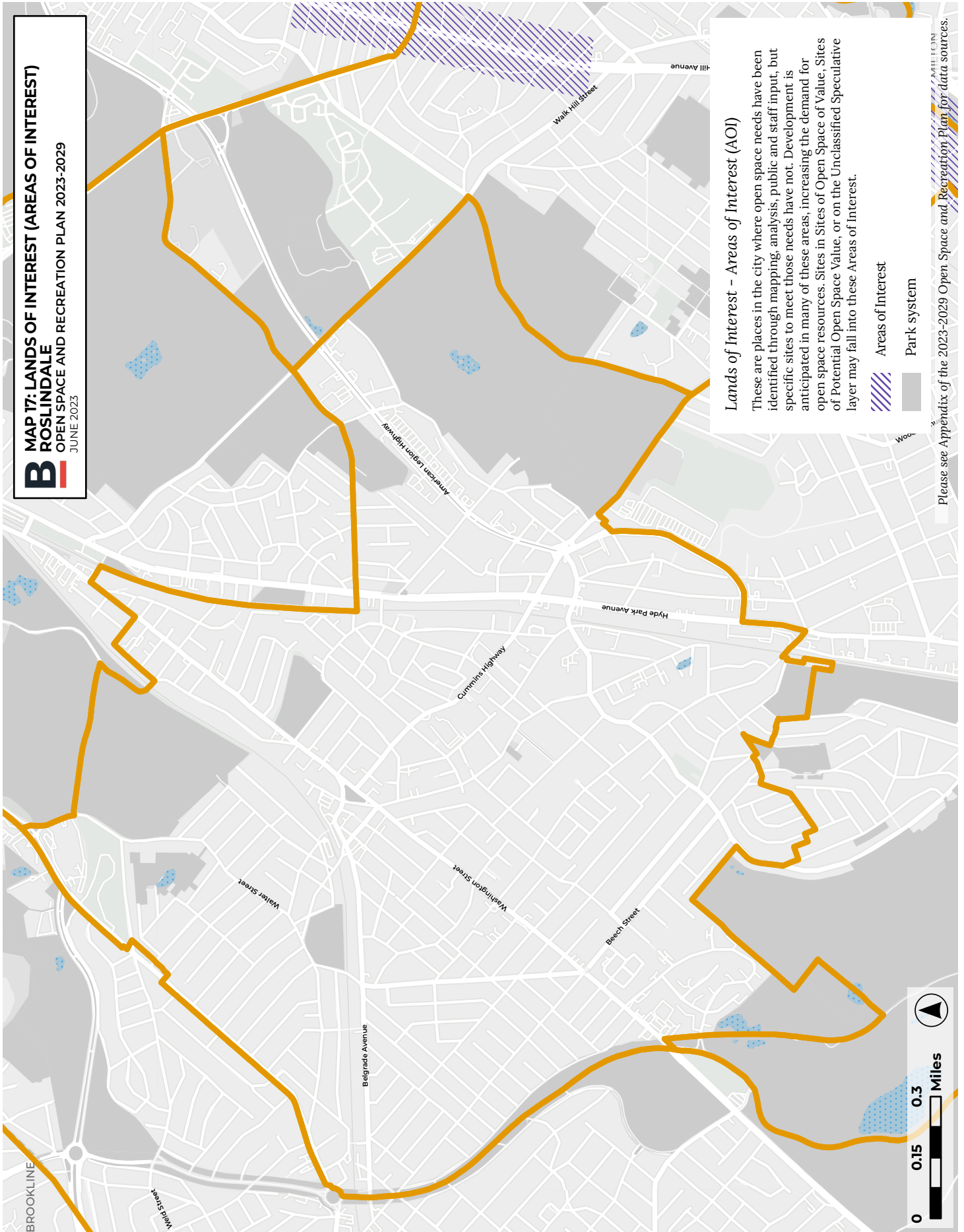


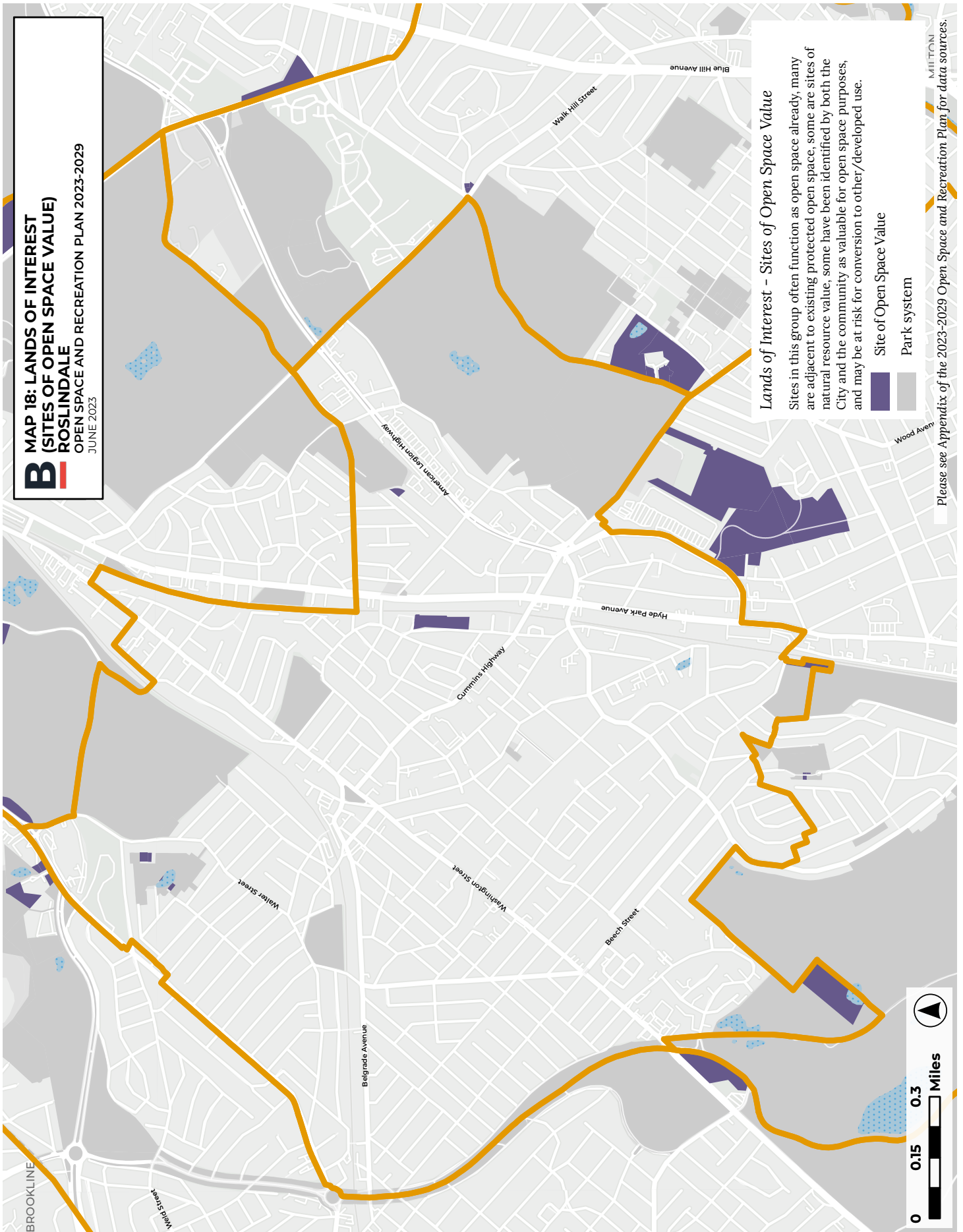
**Lands of Interest - all identified areas**

Lands of Conservation and Recreation Interest (Lands of Interest) are sites that are not currently considered to be a part of the permanent and public park system but could be valuable additions.

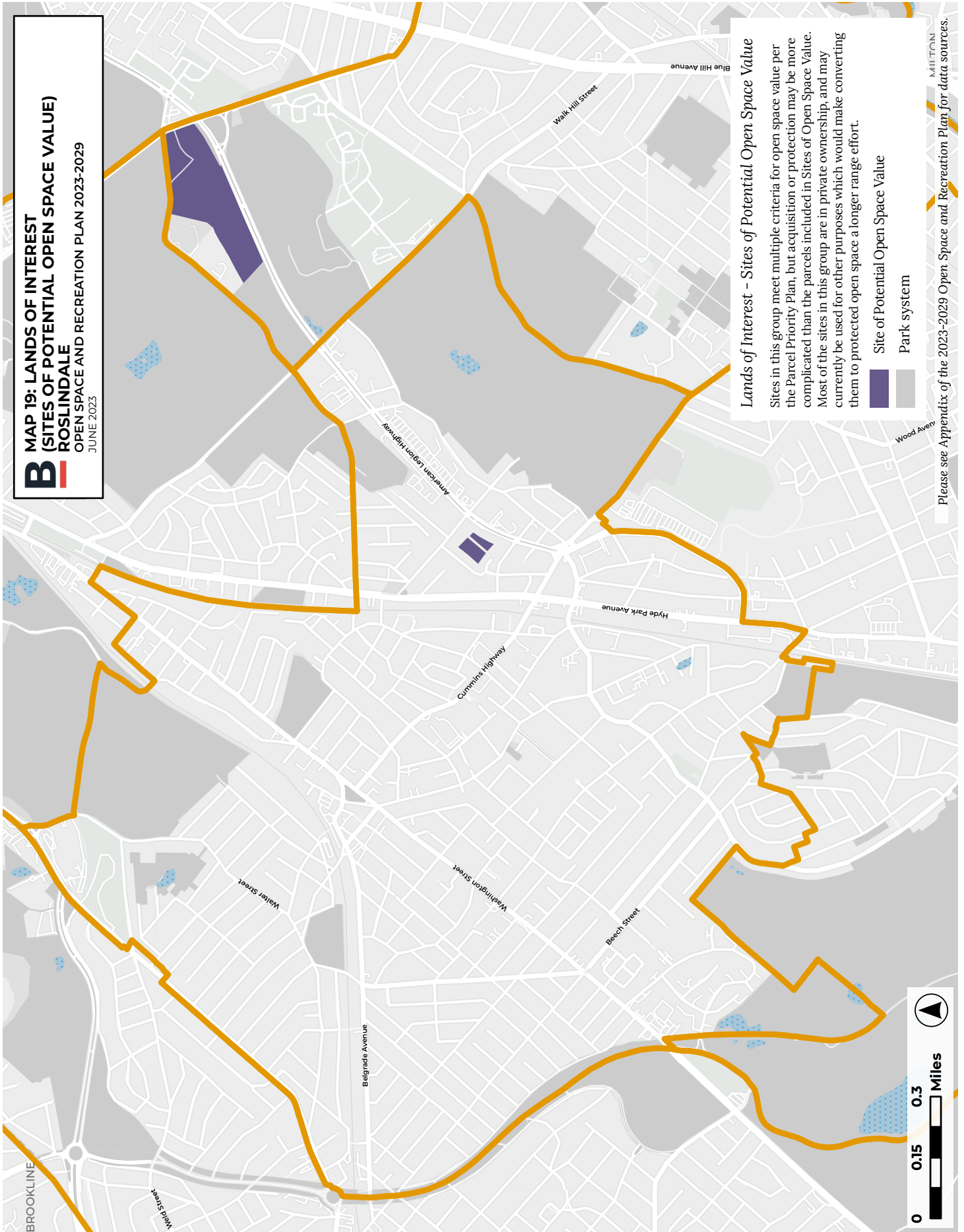
- Sites of Open Space Value, Sites of Potential Open Space Value, and Unclassified Speculative Sites
- Area of Interest (AOI)
- Park system

Please see Appendix of the 2023-2029 Open Space and Recreation Plan for data sources.



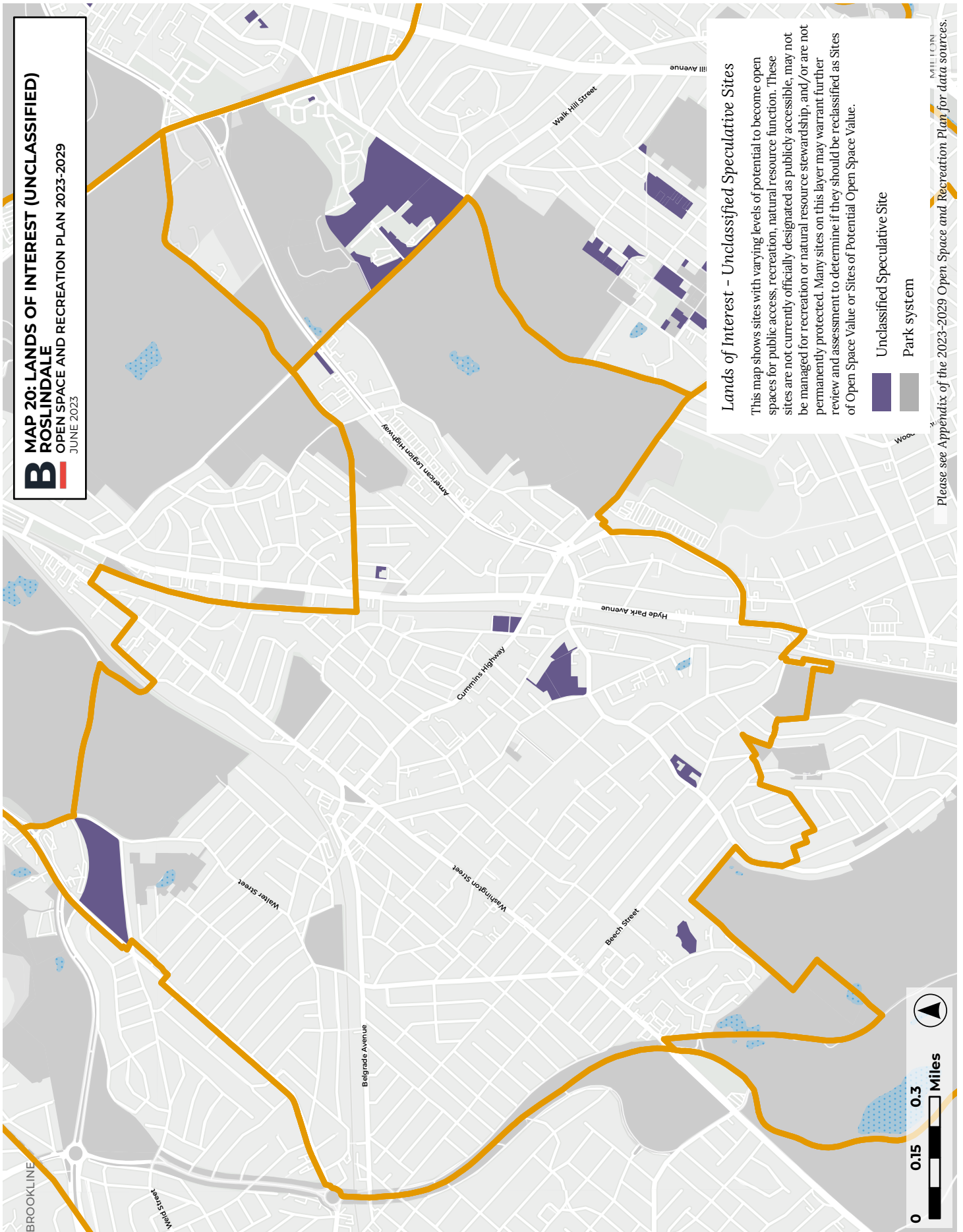






Please see Appendix of the 2023-2029 Open Space and Recreation Plan for data sources.

**B** MAP 20: LANDS OF INTEREST (UNCLASSIFIED)  
ROSLINDALE  
OPEN SPACE AND RECREATION PLAN 2023-2029  
JUNE 2023



**Lands of Interest - Unclassified Speculative Sites**

This map shows sites with varying levels of potential to become open spaces for public access, recreation, natural resource function. These sites are not currently officially designated as publicly accessible, may not be managed for recreation or natural resource stewardship, and/or are not permanently protected. Many sites on this layer may warrant further review and assessment to determine if they should be reclassified as Sites of Open Space Value or Sites of Potential Open Space Value.

- Unclassified Speculative Site
- Park system



Please see Appendix of the 2023-2029 Open Space and Recreation Plan for data sources.

