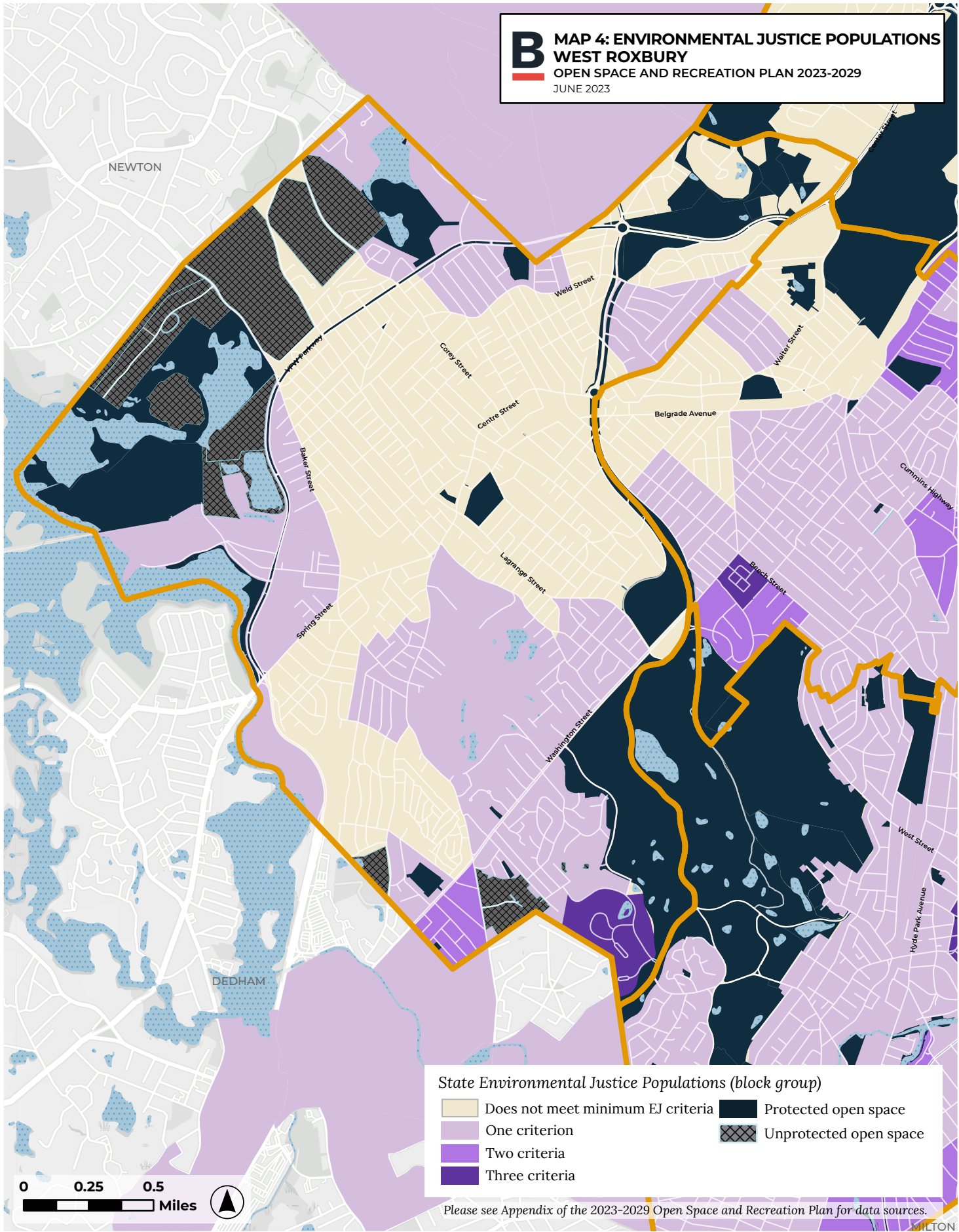


2023-2029 OPEN SPACE AND RECREATION PLAN

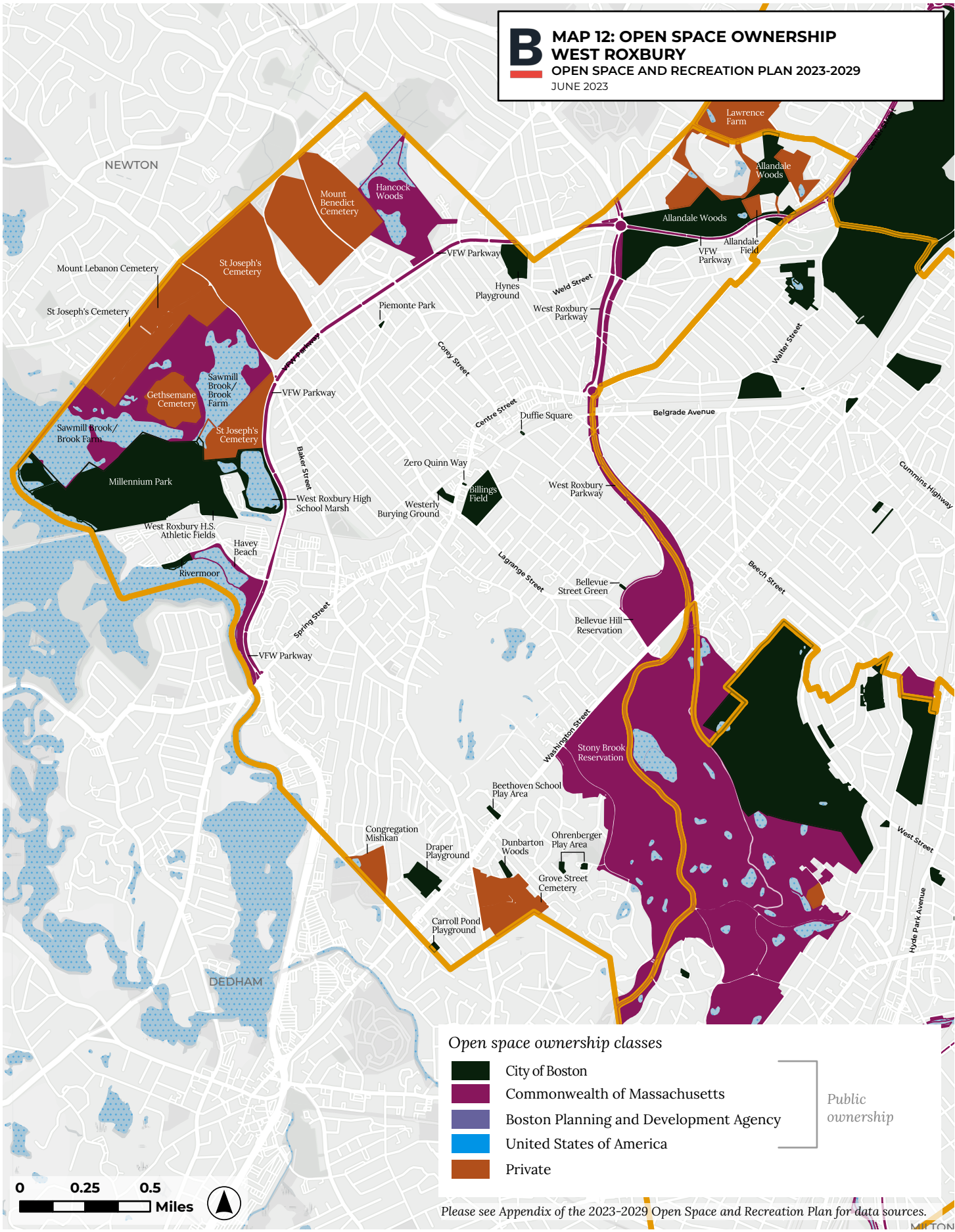
WEST ROXBURY

NEIGHBORHOOD MAPS

B MAP 4: ENVIRONMENTAL JUSTICE POPULATIONS
WEST ROXBURY
OPEN SPACE AND RECREATION PLAN 2023-2029
JUNE 2023



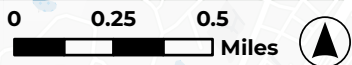
B MAP 12: OPEN SPACE OWNERSHIP
WEST ROXBURY
 OPEN SPACE AND RECREATION PLAN 2023-2029
 JUNE 2023



Open space ownership classes

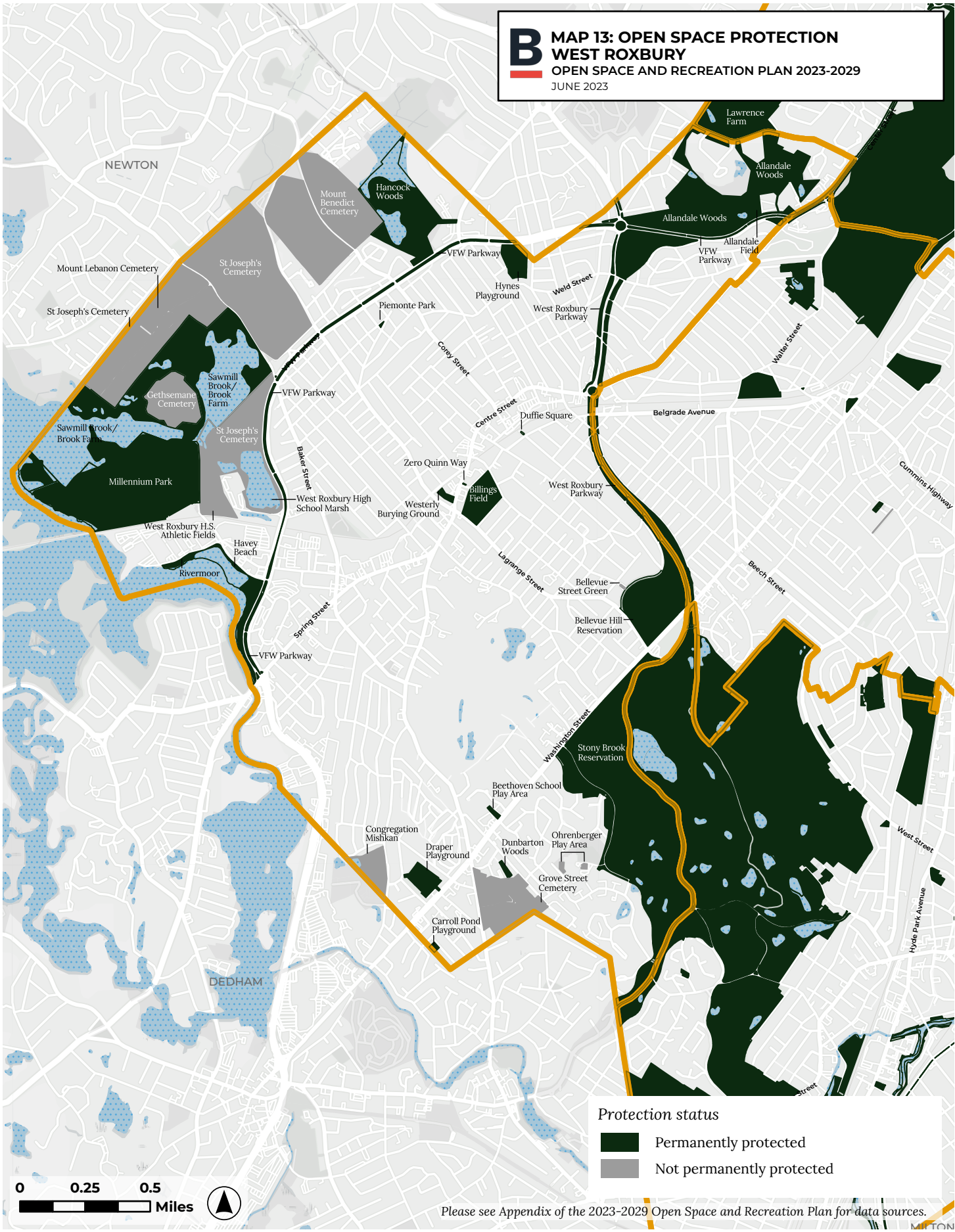
- City of Boston
- Commonwealth of Massachusetts
- Boston Planning and Development Agency
- United States of America
- Private

Public ownership



Please see Appendix of the 2023-2029 Open Space and Recreation Plan for data sources.

B MAP 13: OPEN SPACE PROTECTION
WEST ROXBURY
OPEN SPACE AND RECREATION PLAN 2023-2029
JUNE 2023

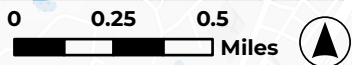
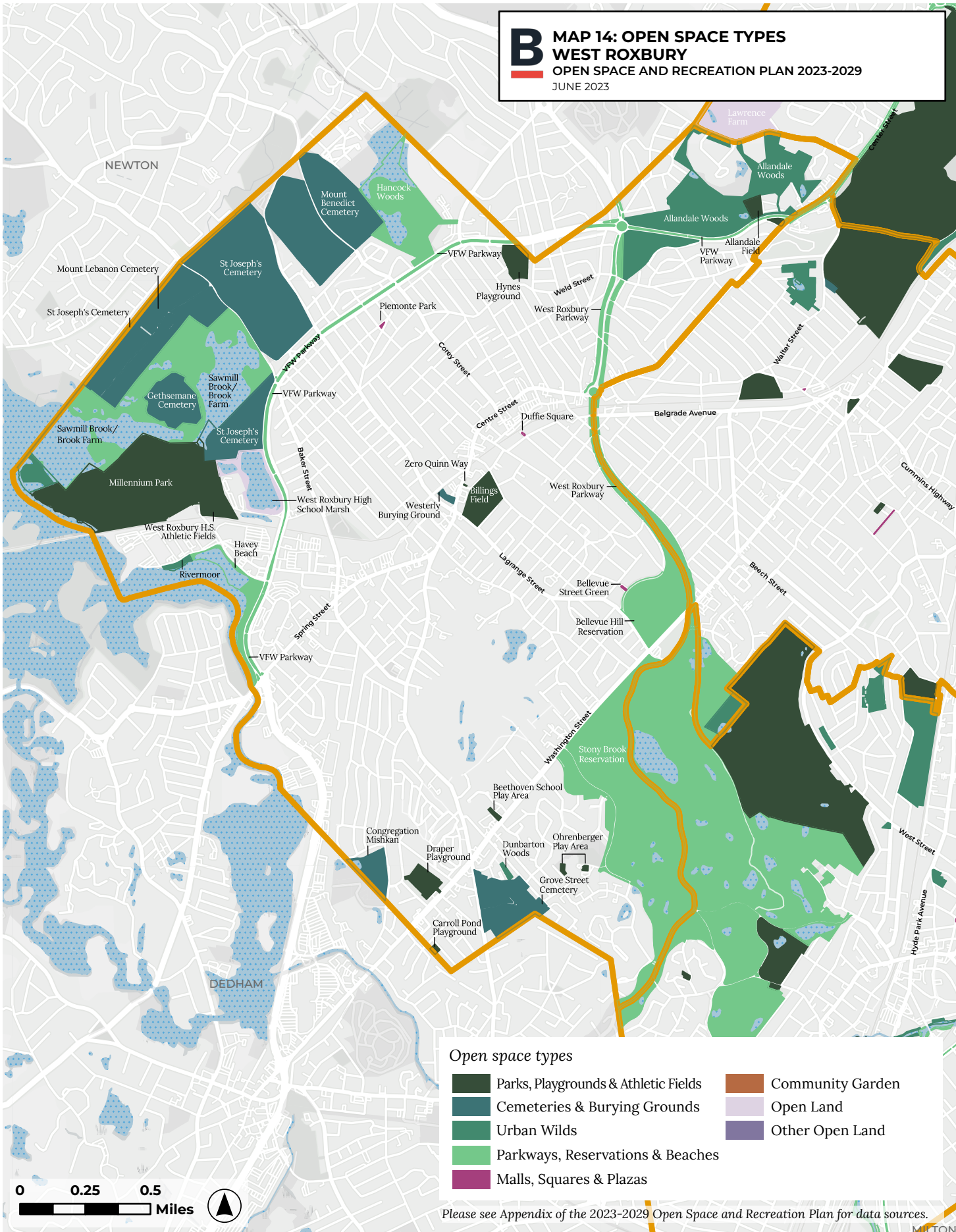


Protection status

- Permanently protected
- Not permanently protected

Please see Appendix of the 2023-2029 Open Space and Recreation Plan for data sources.

B MAP 14: OPEN SPACE TYPES
WEST ROXBURY
 OPEN SPACE AND RECREATION PLAN 2023-2029
 JUNE 2023

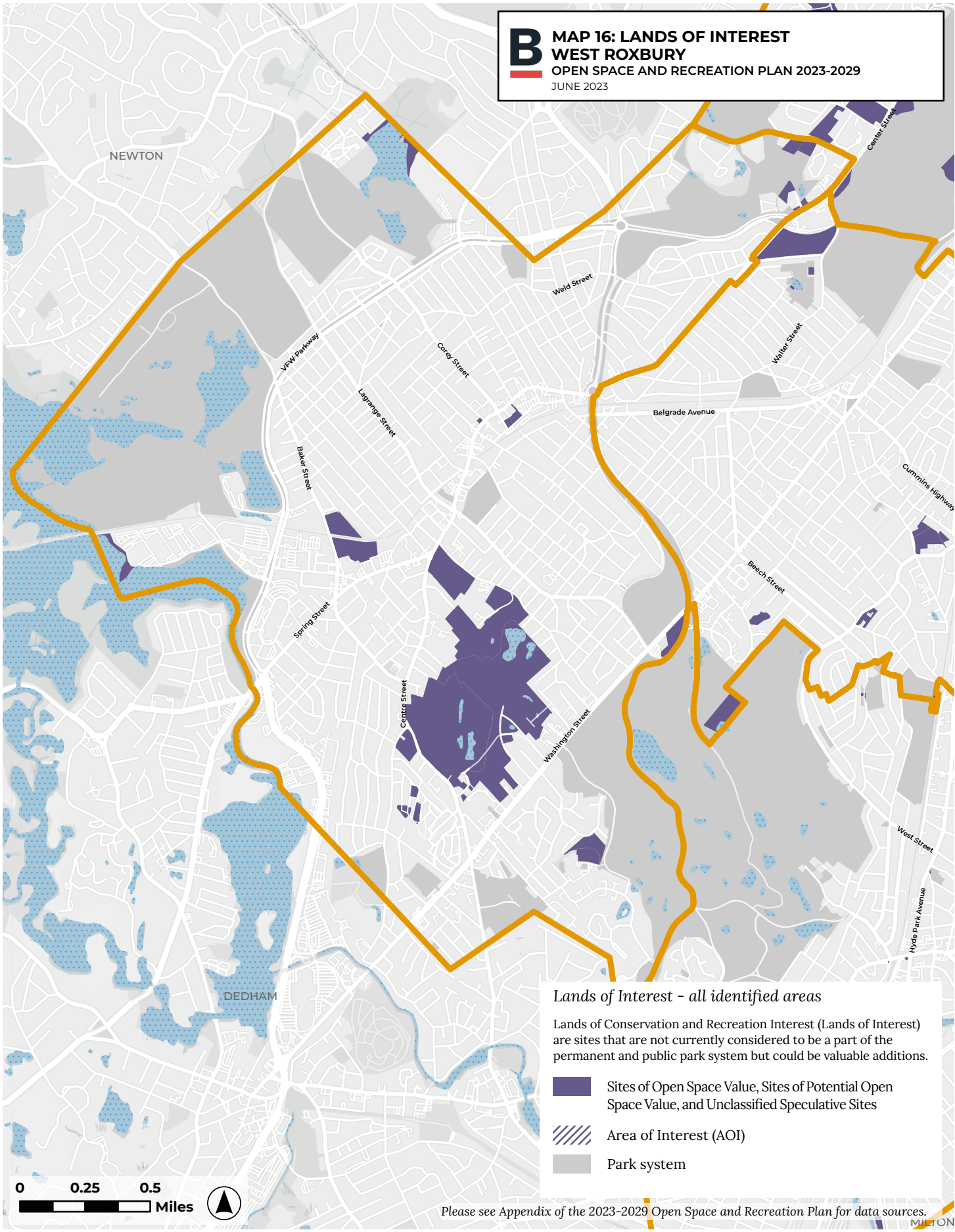


Open space types

 Parks, Playgrounds & Athletic Fields	 Community Garden
 Cemeteries & Burying Grounds	 Open Land
 Urban Wilds	 Other Open Land
 Parkways, Reservations & Beaches	
 Malls, Squares & Plazas	

Please see Appendix of the 2023-2029 Open Space and Recreation Plan for data sources.

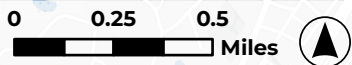
B **MAP 16: LANDS OF INTEREST**
WEST ROXBURY
 OPEN SPACE AND RECREATION PLAN 2023-2029
 JUNE 2023



Lands of Interest - all identified areas

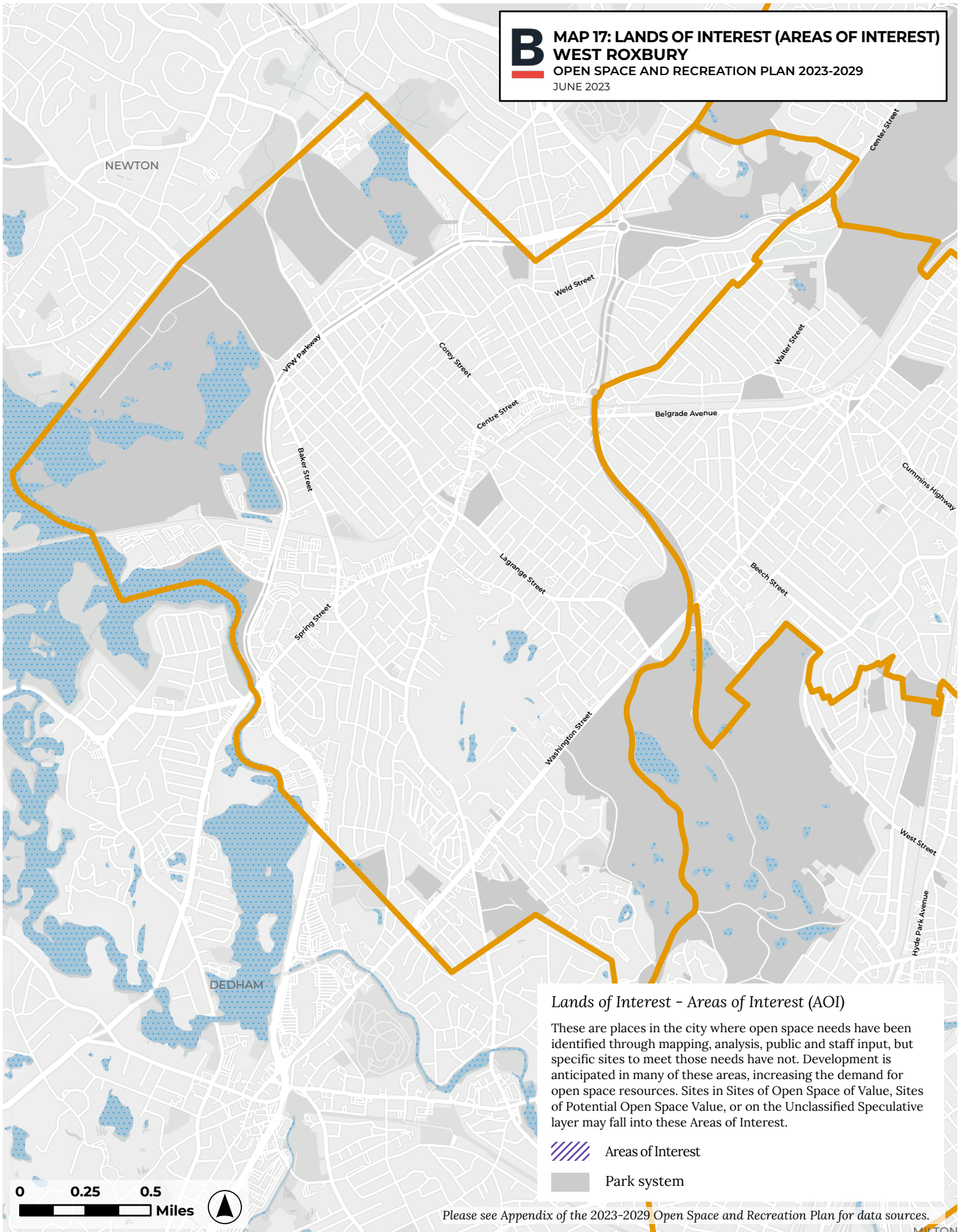
Lands of Conservation and Recreation Interest (Lands of Interest) are sites that are not currently considered to be a part of the permanent and public park system but could be valuable additions.

- Sites of Open Space Value, Sites of Potential Open Space Value, and Unclassified Speculative Sites
- Area of Interest (AOI)
- Park system





Please see Appendix of the 2023-2029 Open Space and Recreation Plan for data sources.

B MAP 17: LANDS OF INTEREST (AREAS OF INTEREST)
WEST ROXBURY
OPEN SPACE AND RECREATION PLAN 2023-2029
JUNE 2023



Lands of Interest - Areas of Interest (AOI)

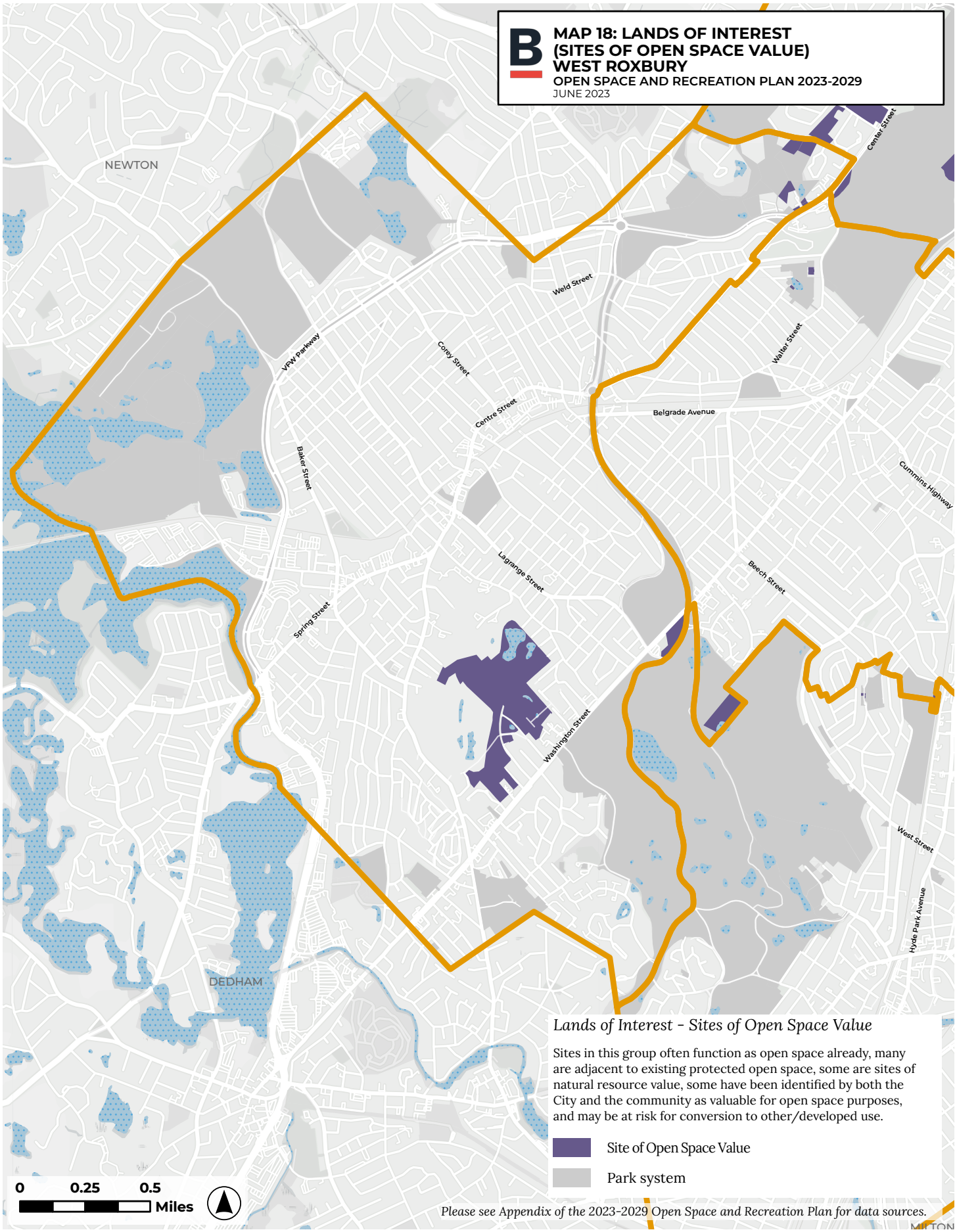
These are places in the city where open space needs have been identified through mapping, analysis, public and staff input, but specific sites to meet those needs have not. Development is anticipated in many of these areas, increasing the demand for open space resources. Sites in Sites of Open Space of Value, Sites of Potential Open Space Value, or on the Unclassified Speculative layer may fall into these Areas of Interest.

-  Areas of Interest
-  Park system



Please see Appendix of the 2023-2029 Open Space and Recreation Plan for data sources.

B MAP 18: LANDS OF INTEREST
 (SITES OF OPEN SPACE VALUE)
 WEST ROXBURY
 OPEN SPACE AND RECREATION PLAN 2023-2029
 JUNE 2023



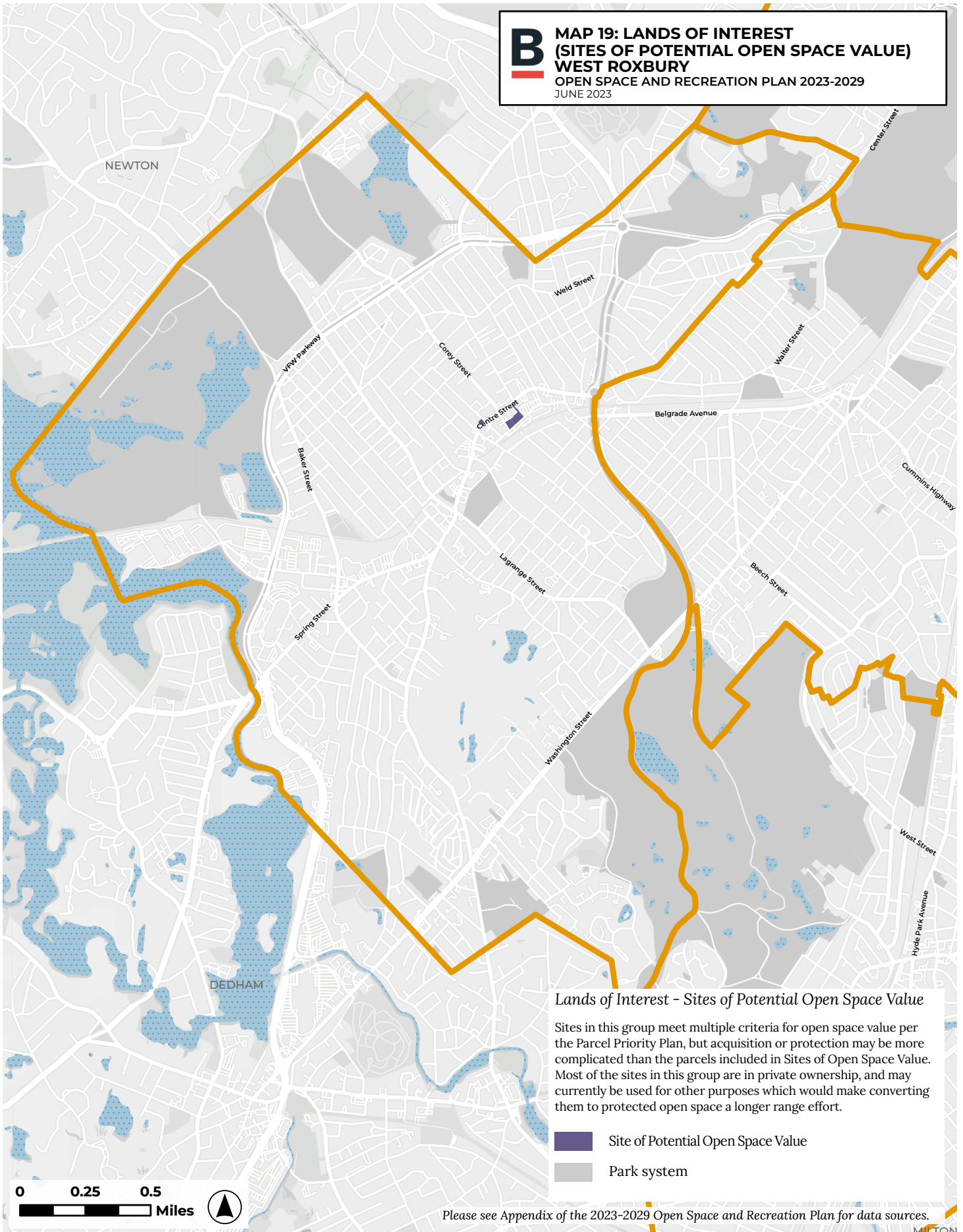
Lands of Interest - Sites of Open Space Value

Sites in this group often function as open space already, many are adjacent to existing protected open space, some are sites of natural resource value, some have been identified by both the City and the community as valuable for open space purposes, and may be at risk for conversion to other/developed use.

- Site of Open Space Value
- Park system



Please see Appendix of the 2023-2029 Open Space and Recreation Plan for data sources.

B MAP 19: LANDS OF INTEREST
(SITES OF POTENTIAL OPEN SPACE VALUE)
WEST ROXBURY
OPEN SPACE AND RECREATION PLAN 2023-2029
JUNE 2023



Lands of Interest - Sites of Potential Open Space Value

Sites in this group meet multiple criteria for open space value per the Parcel Priority Plan, but acquisition or protection may be more complicated than the parcels included in Sites of Open Space Value. Most of the sites in this group are in private ownership, and may currently be used for other purposes which would make converting them to protected open space a longer range effort.

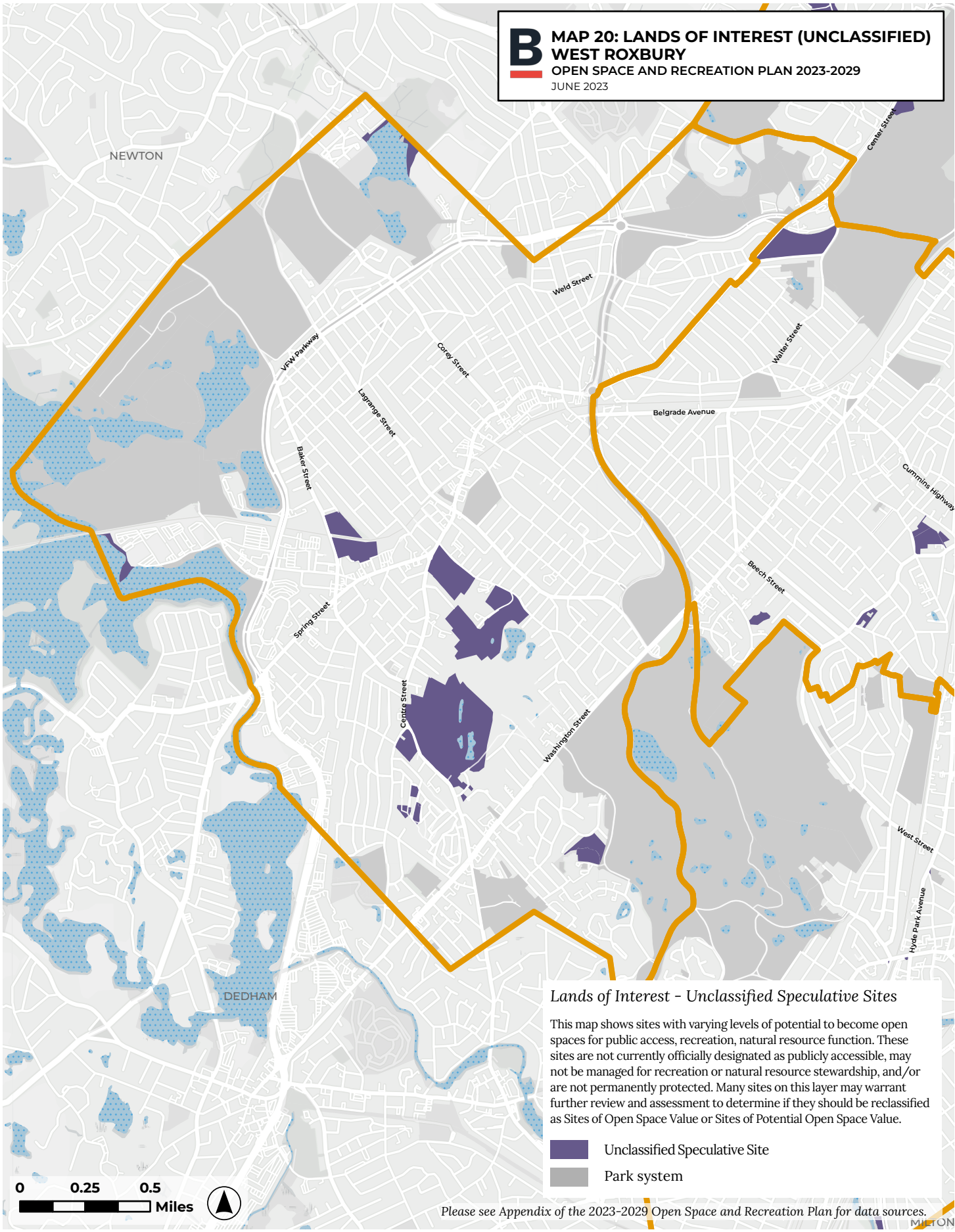
-  Site of Potential Open Space Value
-  Park system

0 0.25 0.5 Miles



Please see Appendix of the 2023-2029 Open Space and Recreation Plan for data sources.

B MAP 20: LANDS OF INTEREST (UNCLASSIFIED)
WEST ROXBURY
 OPEN SPACE AND RECREATION PLAN 2023-2029
 JUNE 2023



Lands of Interest - Unclassified Speculative Sites

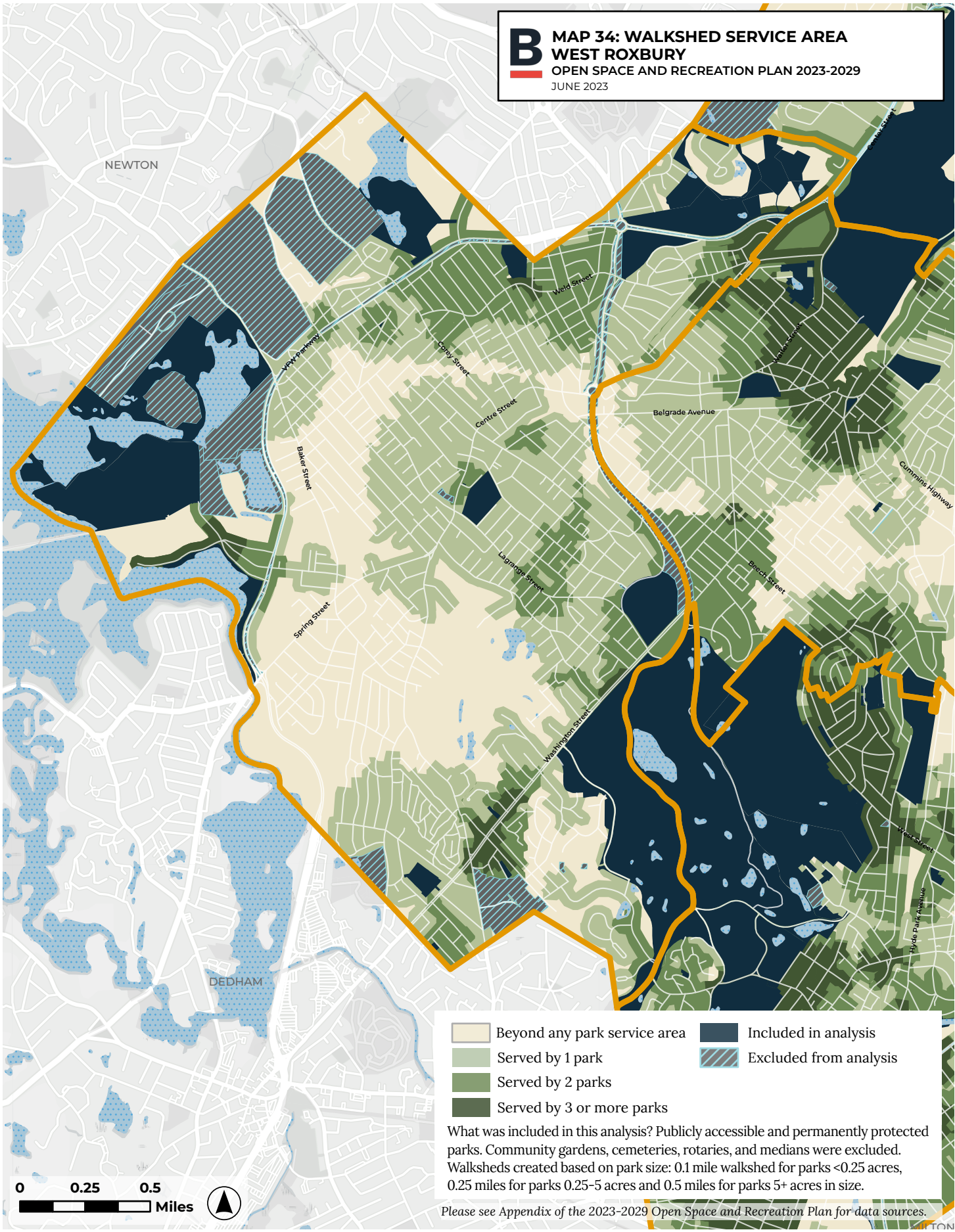
This map shows sites with varying levels of potential to become open spaces for public access, recreation, natural resource function. These sites are not currently officially designated as publicly accessible, may not be managed for recreation or natural resource stewardship, and/or are not permanently protected. Many sites on this layer may warrant further review and assessment to determine if they should be reclassified as Sites of Open Space Value or Sites of Potential Open Space Value.

- Unclassified Speculative Site
- Park system



Please see Appendix of the 2023-2029 Open Space and Recreation Plan for data sources.

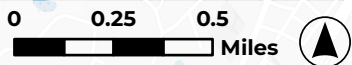
B MAP 34: WALKSHED SERVICE AREA
WEST ROXBURY
 OPEN SPACE AND RECREATION PLAN 2023-2029
 JUNE 2023



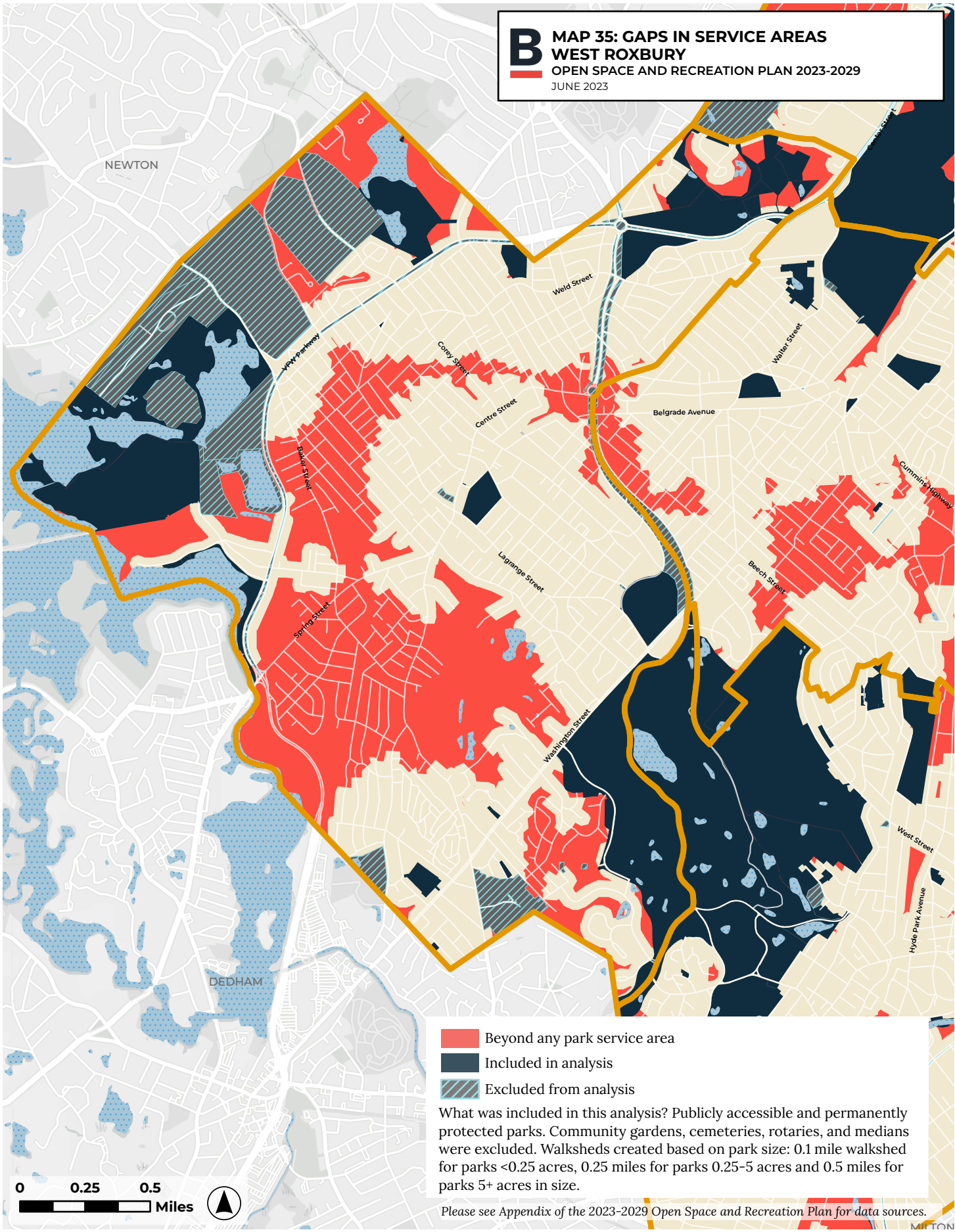
- Beyond any park service area
- Served by 1 park
- Served by 2 parks
- Served by 3 or more parks
- Included in analysis
- Excluded from analysis

What was included in this analysis? Publicly accessible and permanently protected parks. Community gardens, cemeteries, rotaries, and medians were excluded. Walksheds created based on park size: 0.1 mile walkshed for parks <0.25 acres, 0.25 miles for parks 0.25-5 acres and 0.5 miles for parks 5+ acres in size.

Please see Appendix of the 2023-2029 Open Space and Recreation Plan for data sources.



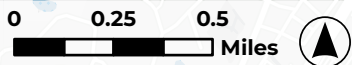
B MAP 35: GAPS IN SERVICE AREAS
WEST ROXBURY
 OPEN SPACE AND RECREATION PLAN 2023-2029
 JUNE 2023



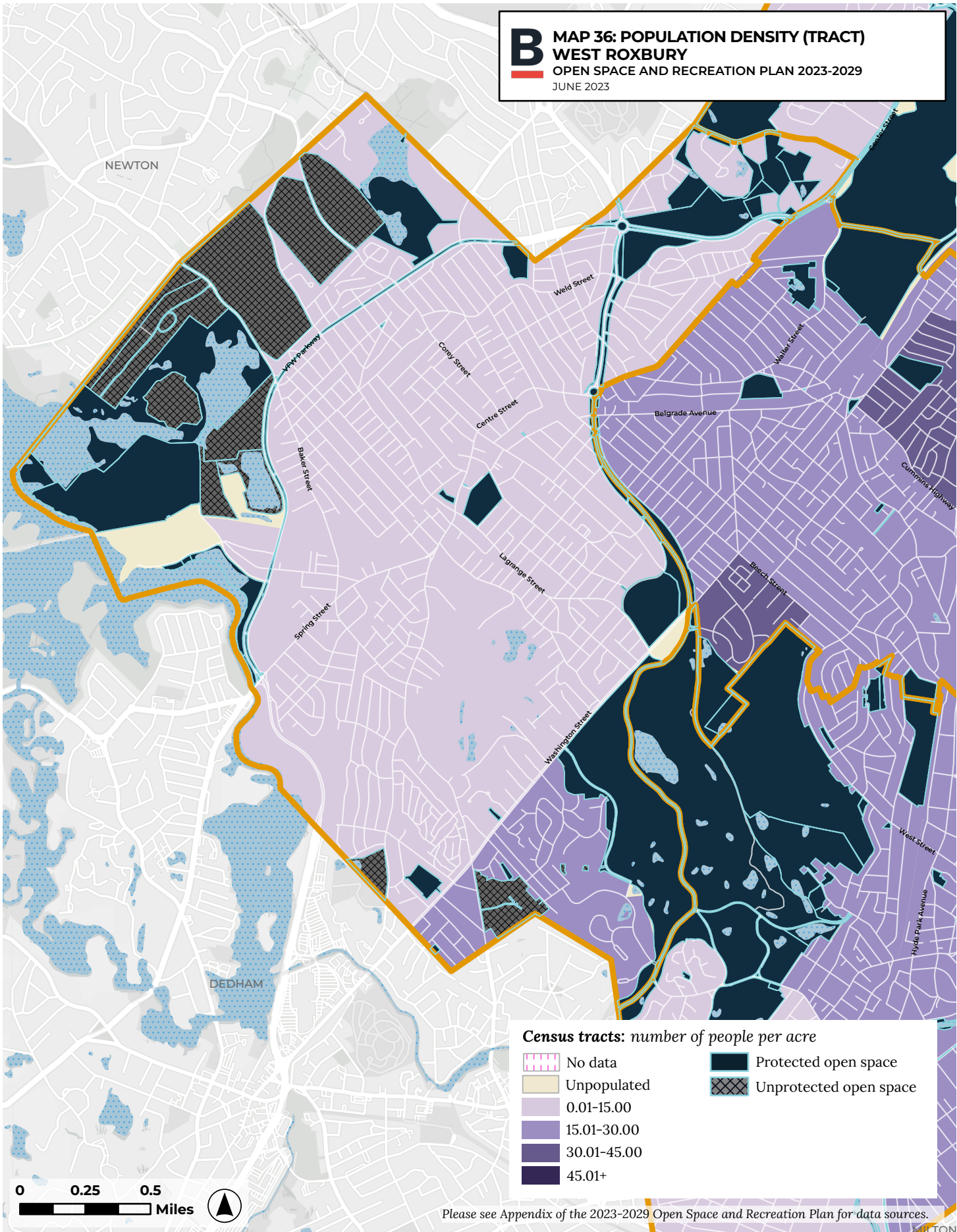
- Beyond any park service area
- Included in analysis
- Excluded from analysis

What was included in this analysis? Publicly accessible and permanently protected parks. Community gardens, cemeteries, rotaries, and medians were excluded. Walksheds created based on park size: 0.1 mile walkshed for parks <0.25 acres, 0.25 miles for parks 0.25-5 acres and 0.5 miles for parks 5+ acres in size.

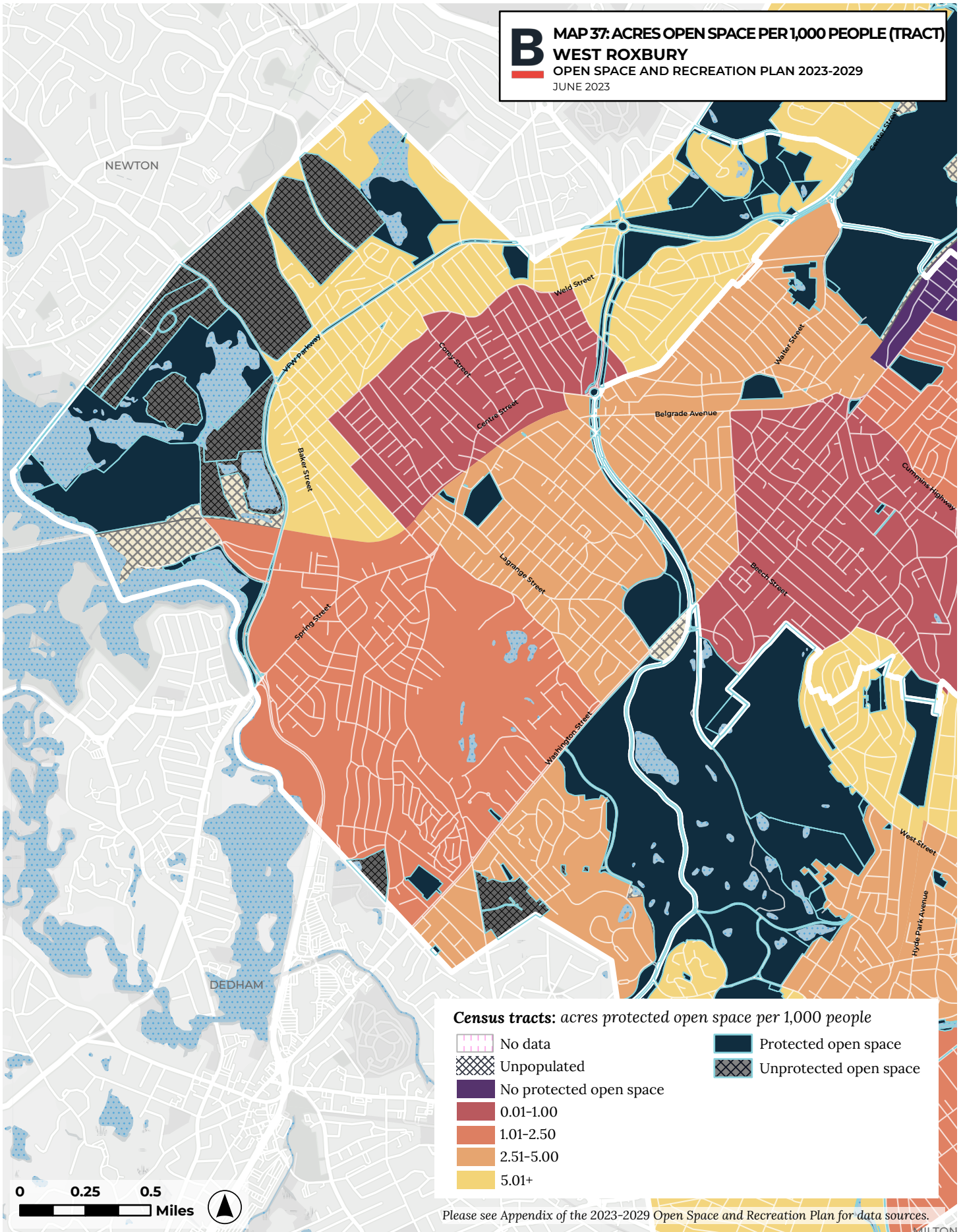
Please see Appendix of the 2023-2029 Open Space and Recreation Plan for data sources.



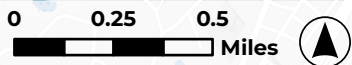
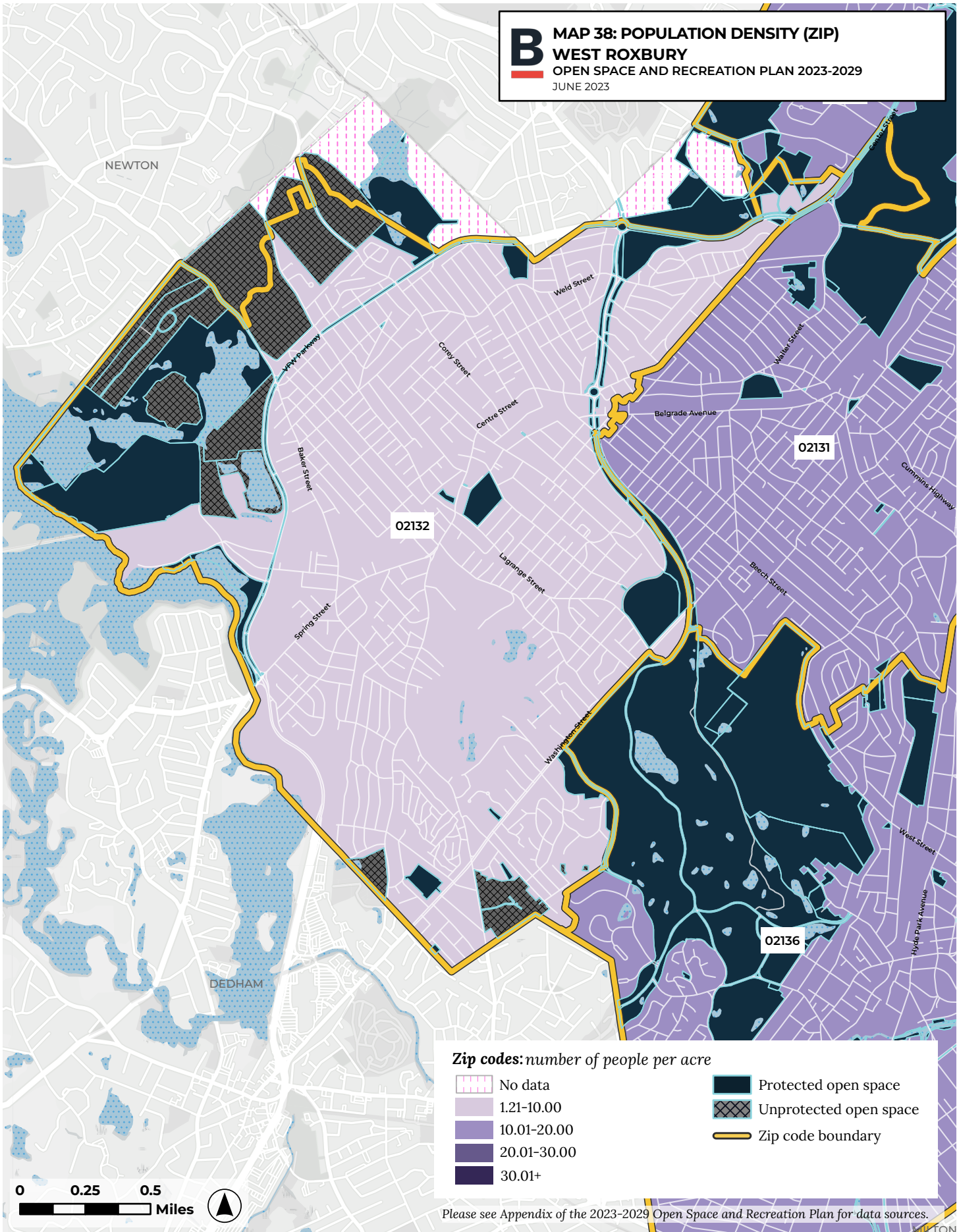
B MAP 36: POPULATION DENSITY (TRACT)
WEST ROXBURY
OPEN SPACE AND RECREATION PLAN 2023-2029
JUNE 2023



B MAP 37: ACRES OPEN SPACE PER 1,000 PEOPLE (TRACT)
WEST ROXBURY
 OPEN SPACE AND RECREATION PLAN 2023-2029
 JUNE 2023

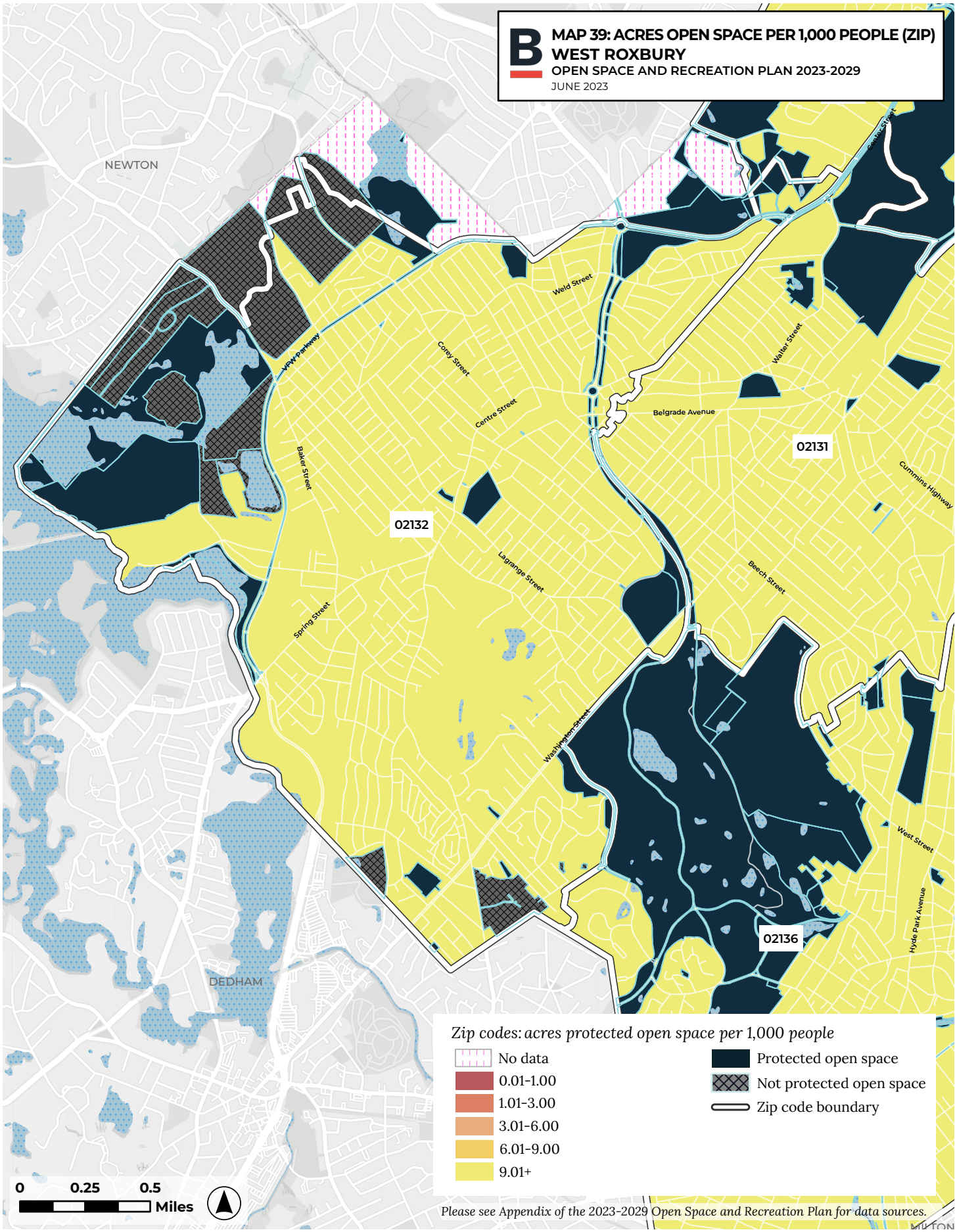


B MAP 38: POPULATION DENSITY (ZIP)
WEST ROXBURY
 OPEN SPACE AND RECREATION PLAN 2023-2029
 JUNE 2023












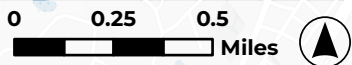
Please see Appendix of the 2023-2029 Open Space and Recreation Plan for data sources.

B MAP 39: ACRES OPEN SPACE PER 1,000 PEOPLE (ZIP)
WEST ROXBURY
 OPEN SPACE AND RECREATION PLAN 2023-2029
 JUNE 2023



Zip codes: acres protected open space per 1,000 people

 No data	 Protected open space
 0.01-1.00	 Not protected open space
 1.01-3.00	 Zip code boundary
 3.01-6.00	
 6.01-9.00	
 9.01+	



Please see Appendix of the 2023-2029 Open Space and Recreation Plan for data sources.