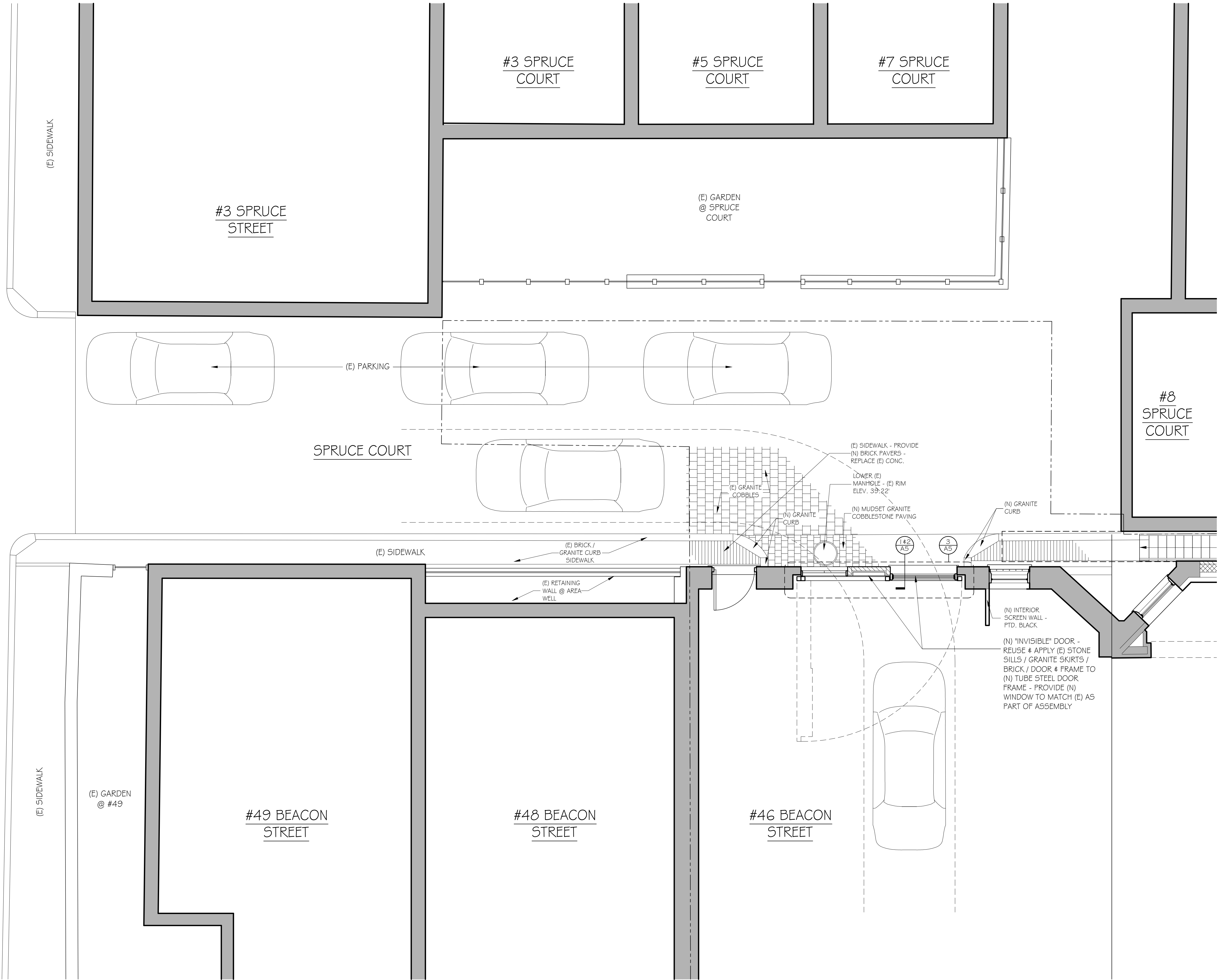


(E) SIDEWALK

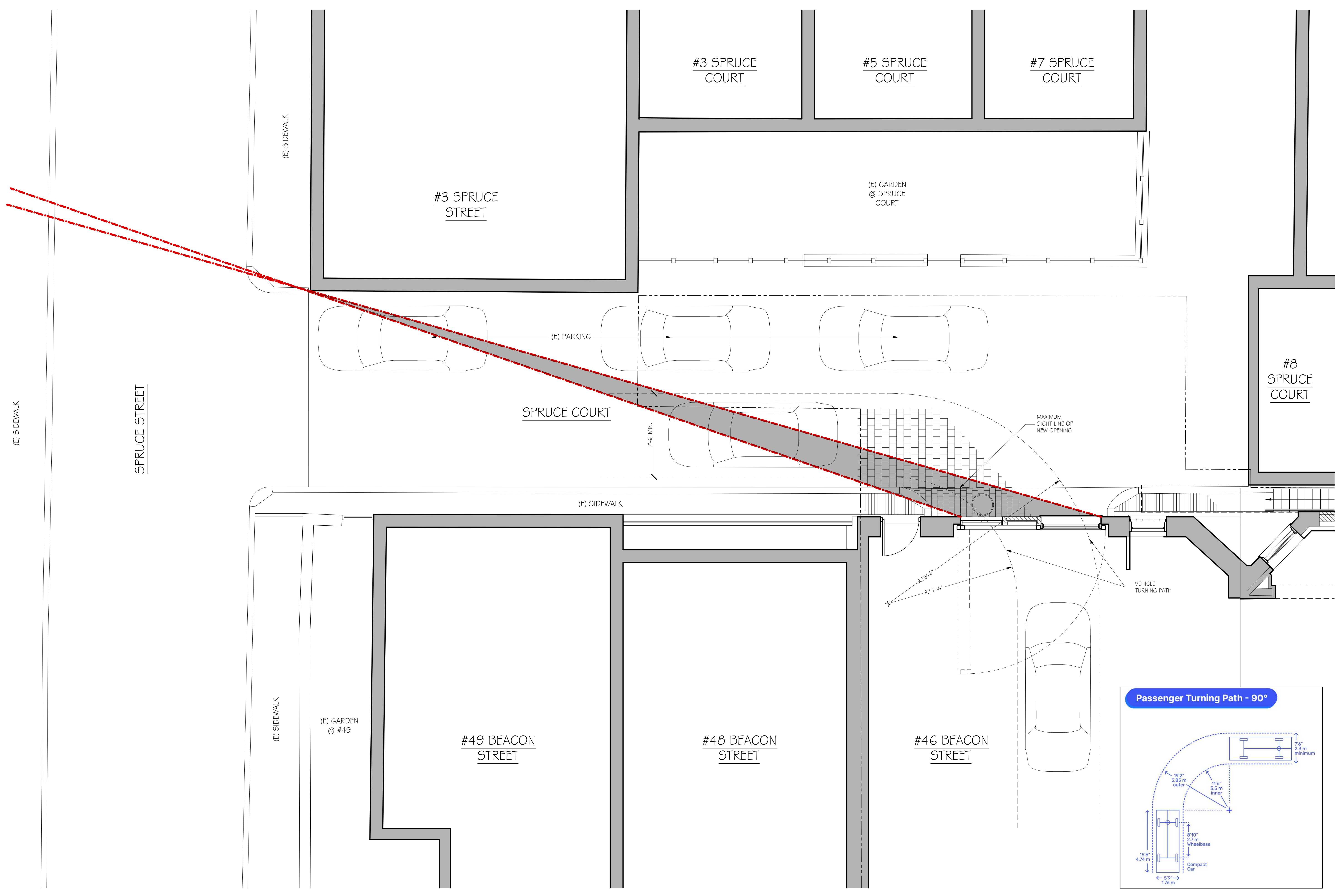
SPRUCE STREET



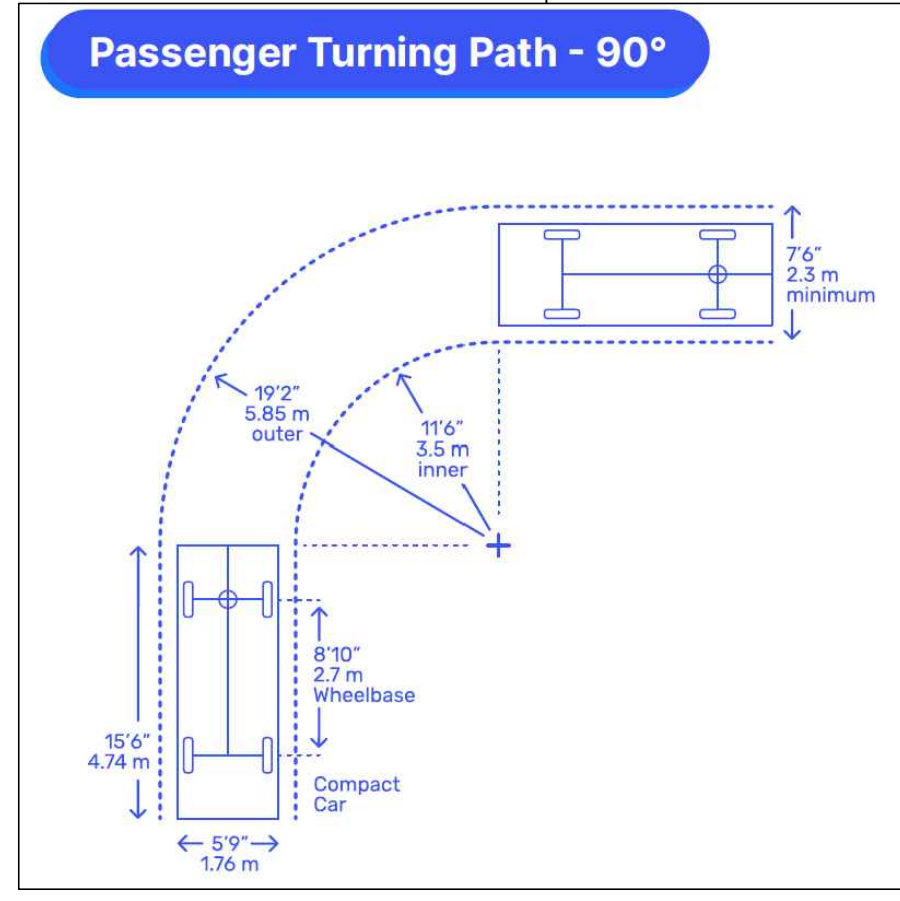
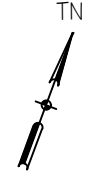
BASEMENT FLOOR PLAN
1/4" = 1'-0"



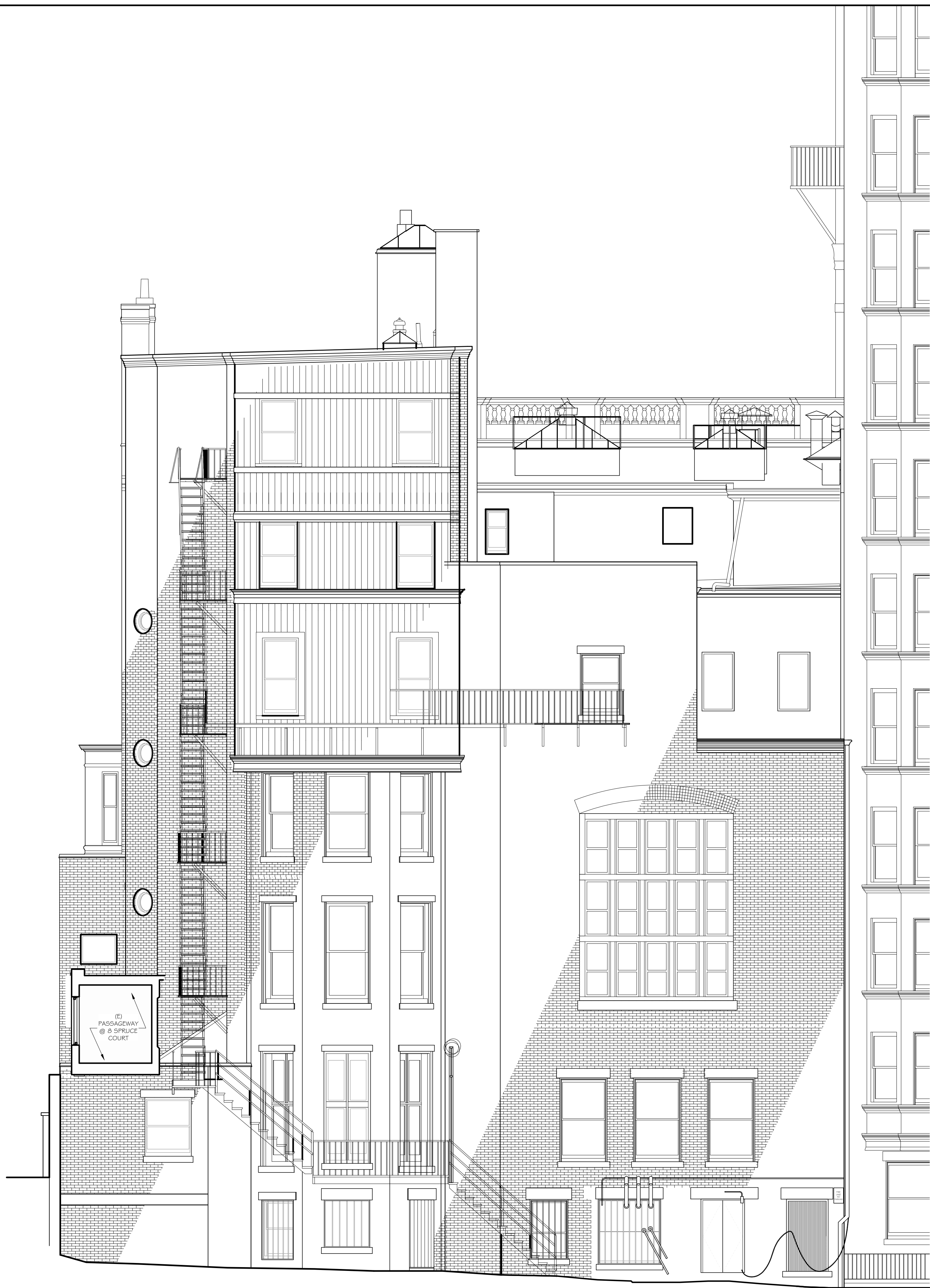
JOB NO: 2311	SCALE: 1/4" = 1'-0"
DATE: 11/30/23	REVISED



BASEMENT FLOOR PLAN
1/4" = 1'-0"



TURNING RADIUS
REFERENCE



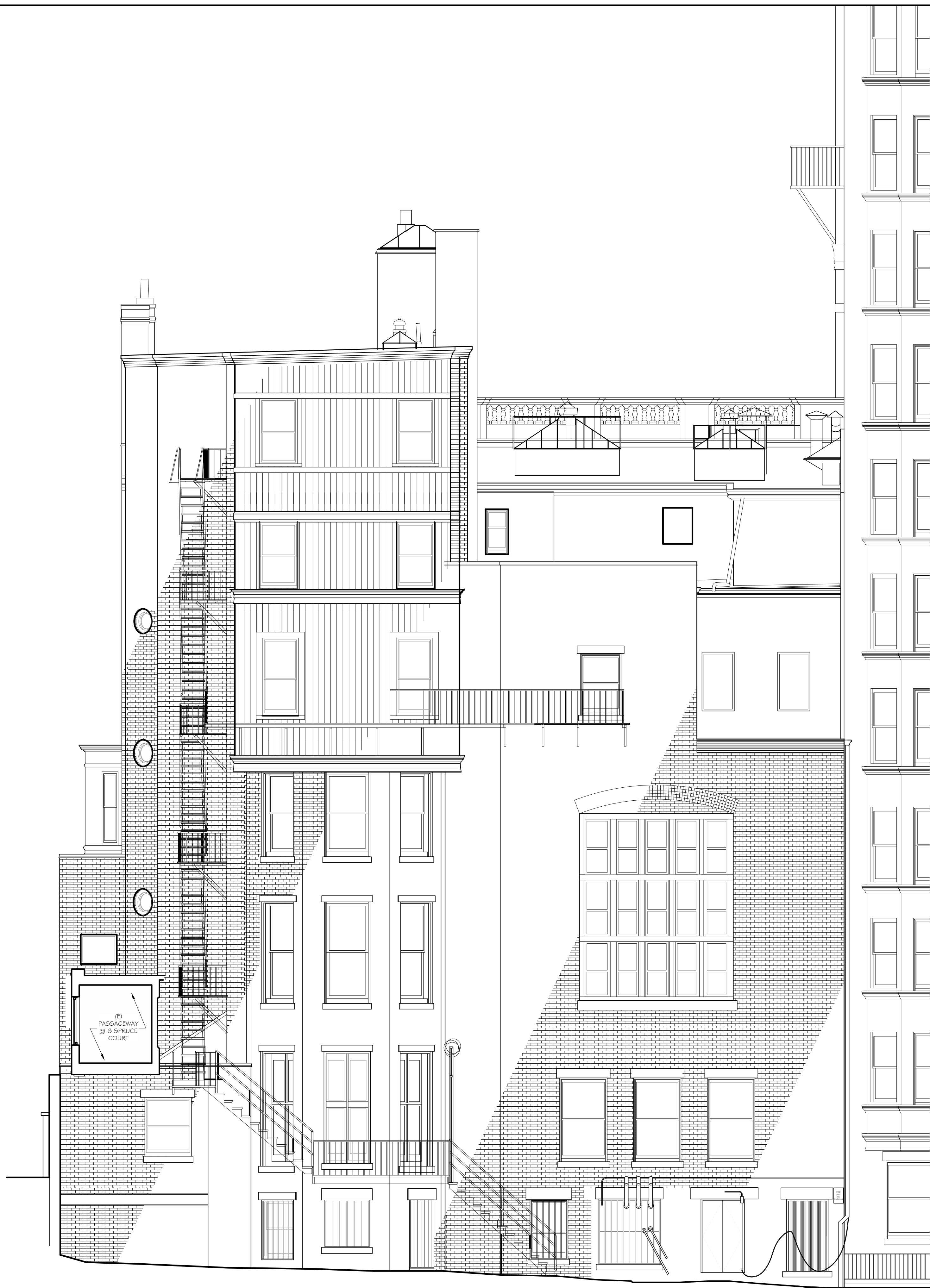
EXISTING NORTH ELEVATION

SCALE: $\frac{3}{16}'' = 1'-0''$



PROPOSED NORTH ELEVATION

SCALE: $\frac{3}{16}'' = 1'-0''$ (PREVIOUSLY SUBMITTED)



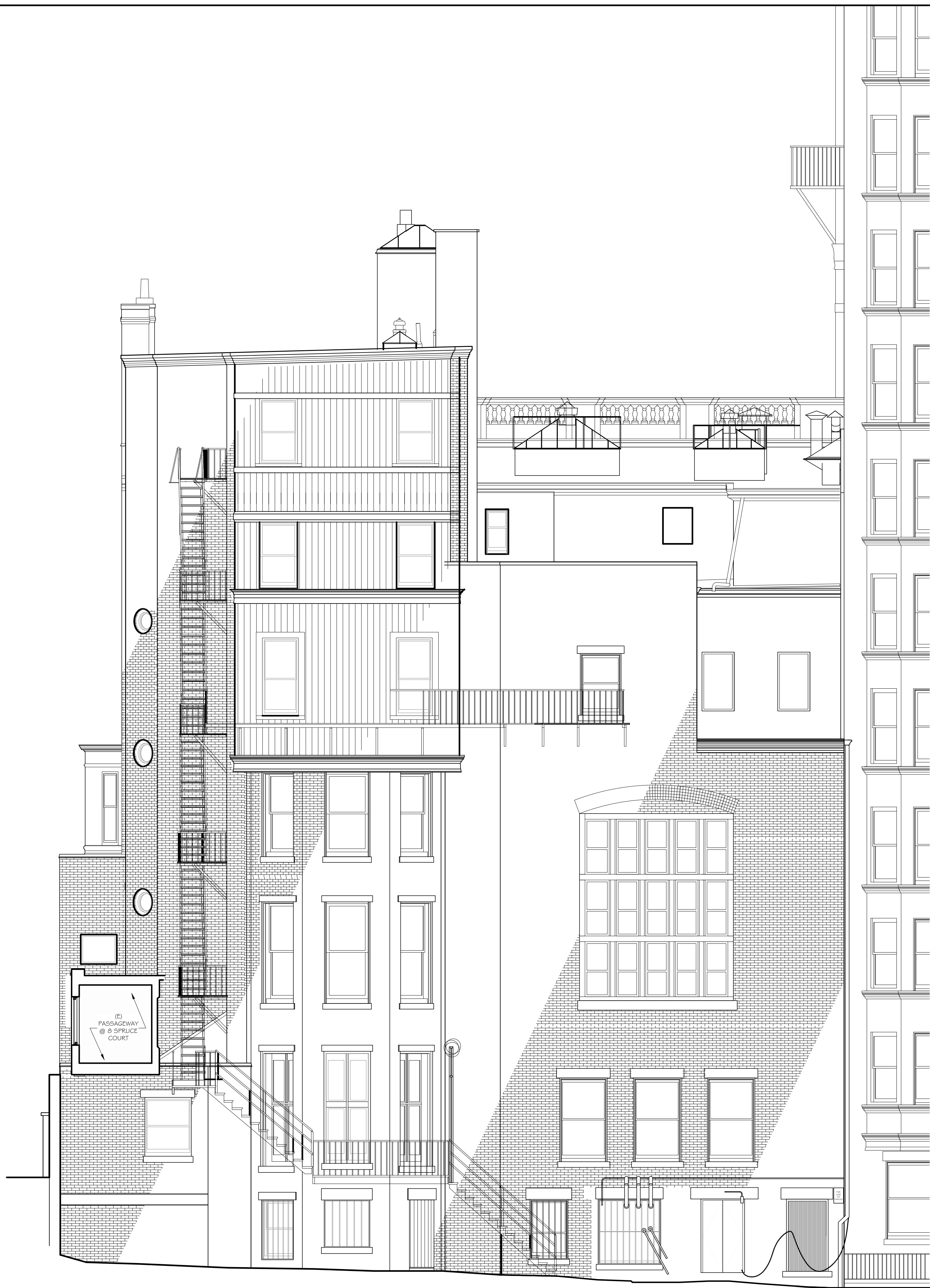
EXISTING NORTH ELEVATION

SCALE: $\frac{3}{16}'' = 1'-0''$



PROPOSED NORTH ELEVATION

SCALE: $\frac{3}{16}'' = 1'-0''$



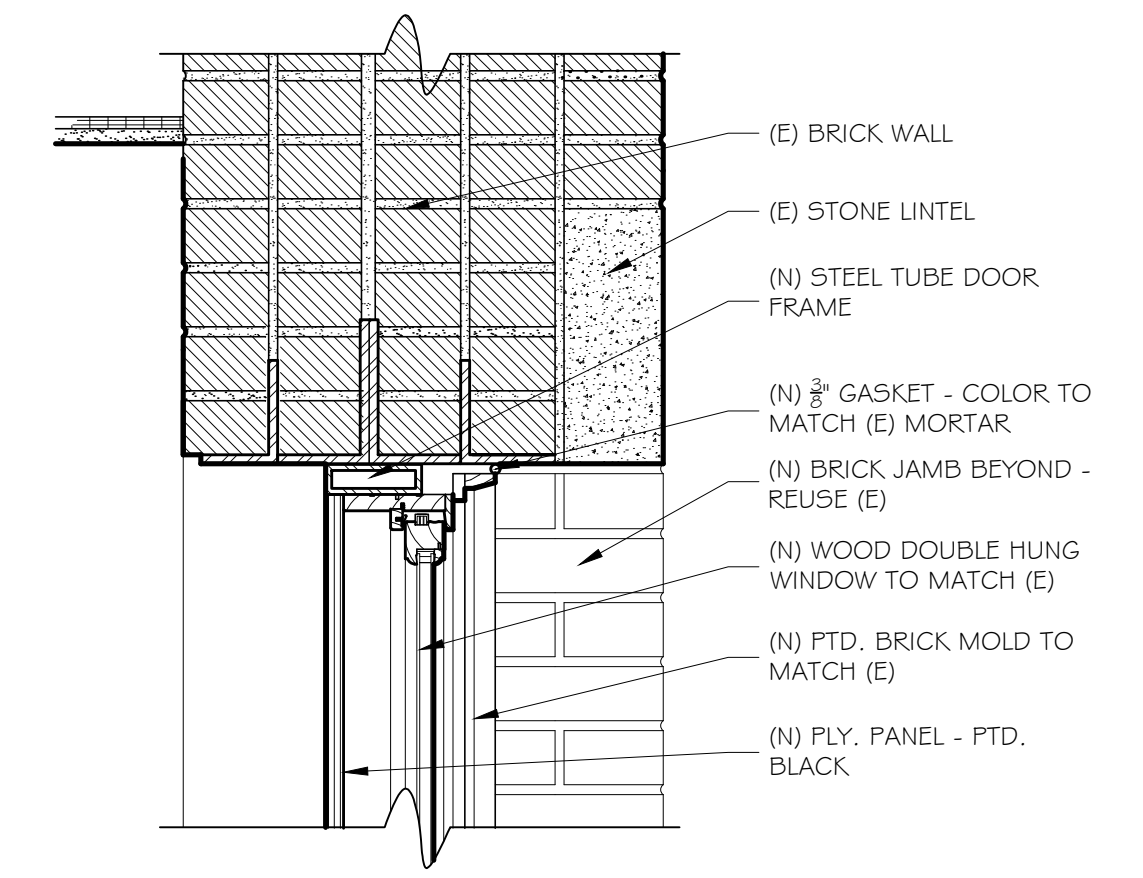
EXISTING NORTH ELEVATION

SCALE: $\frac{3}{16}'' = 1'-0''$

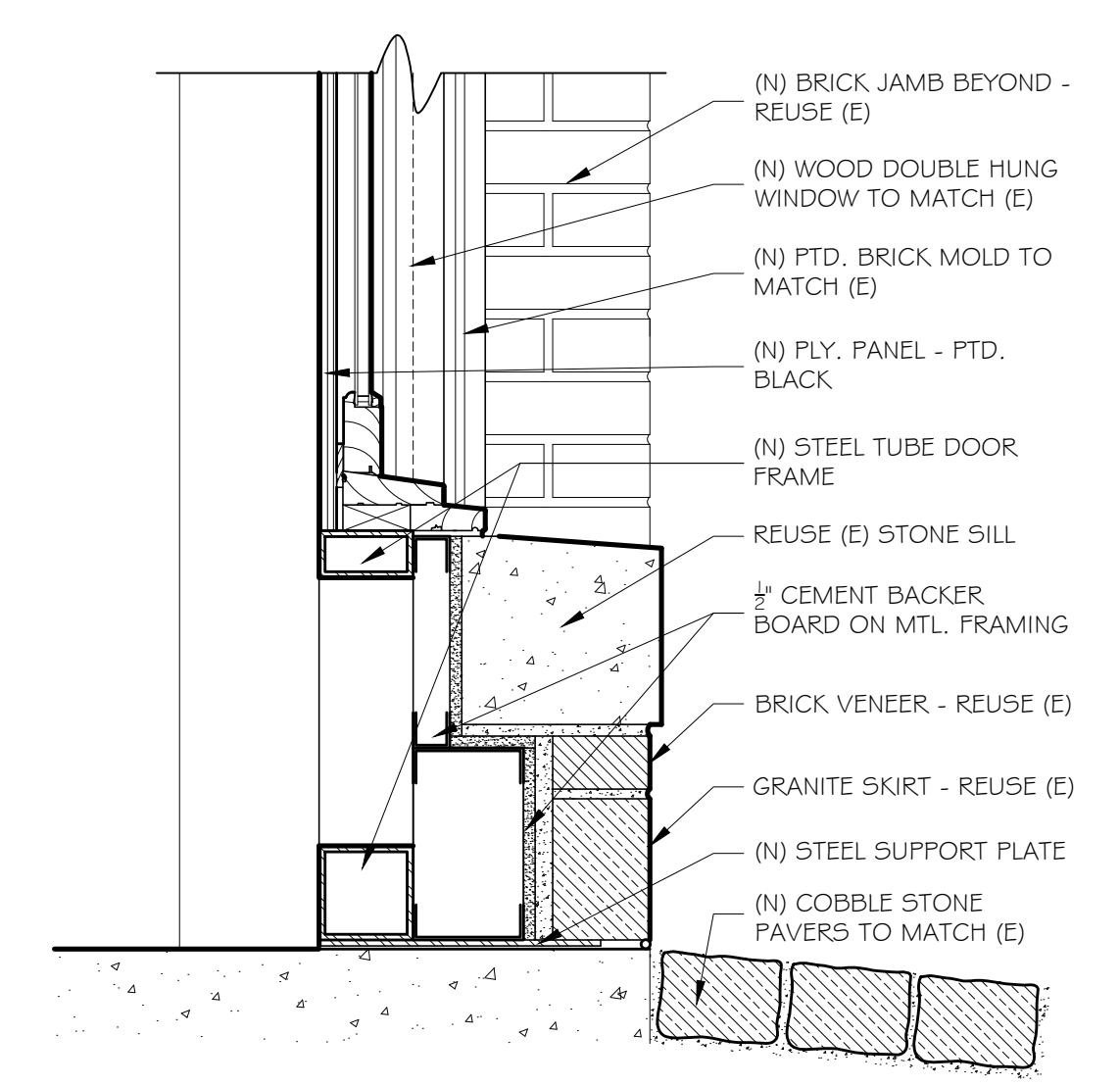


PROPOSED NORTH ELEVATION

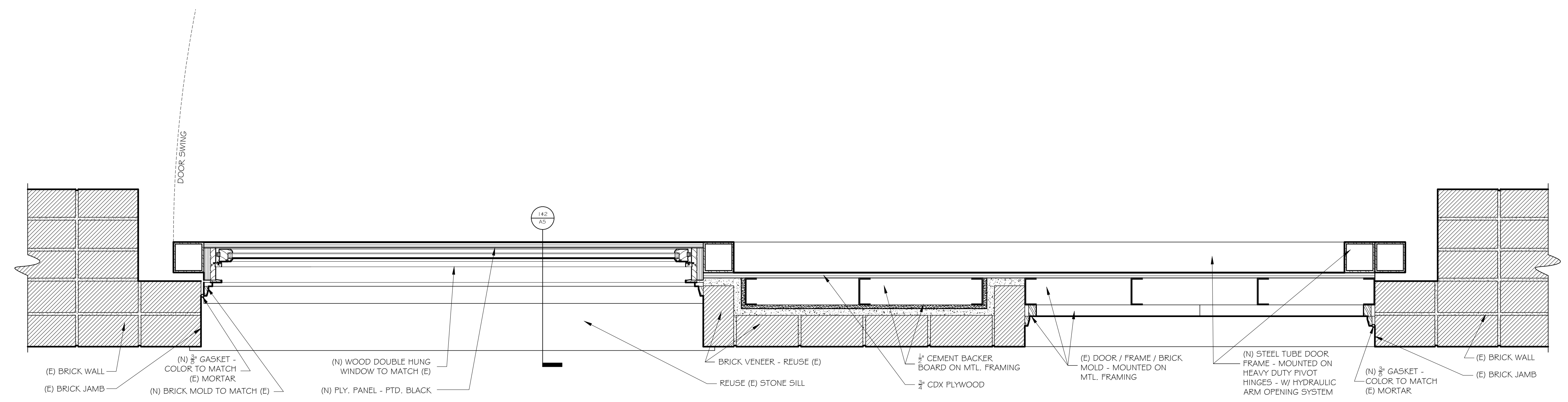
SCALE: $\frac{3}{16}'' = 1'-0''$



1 INVISIBLE DOOR DETAIL THROUGH WINDOW HEAD
 SCALE: 1-1/2" = 1'-0"



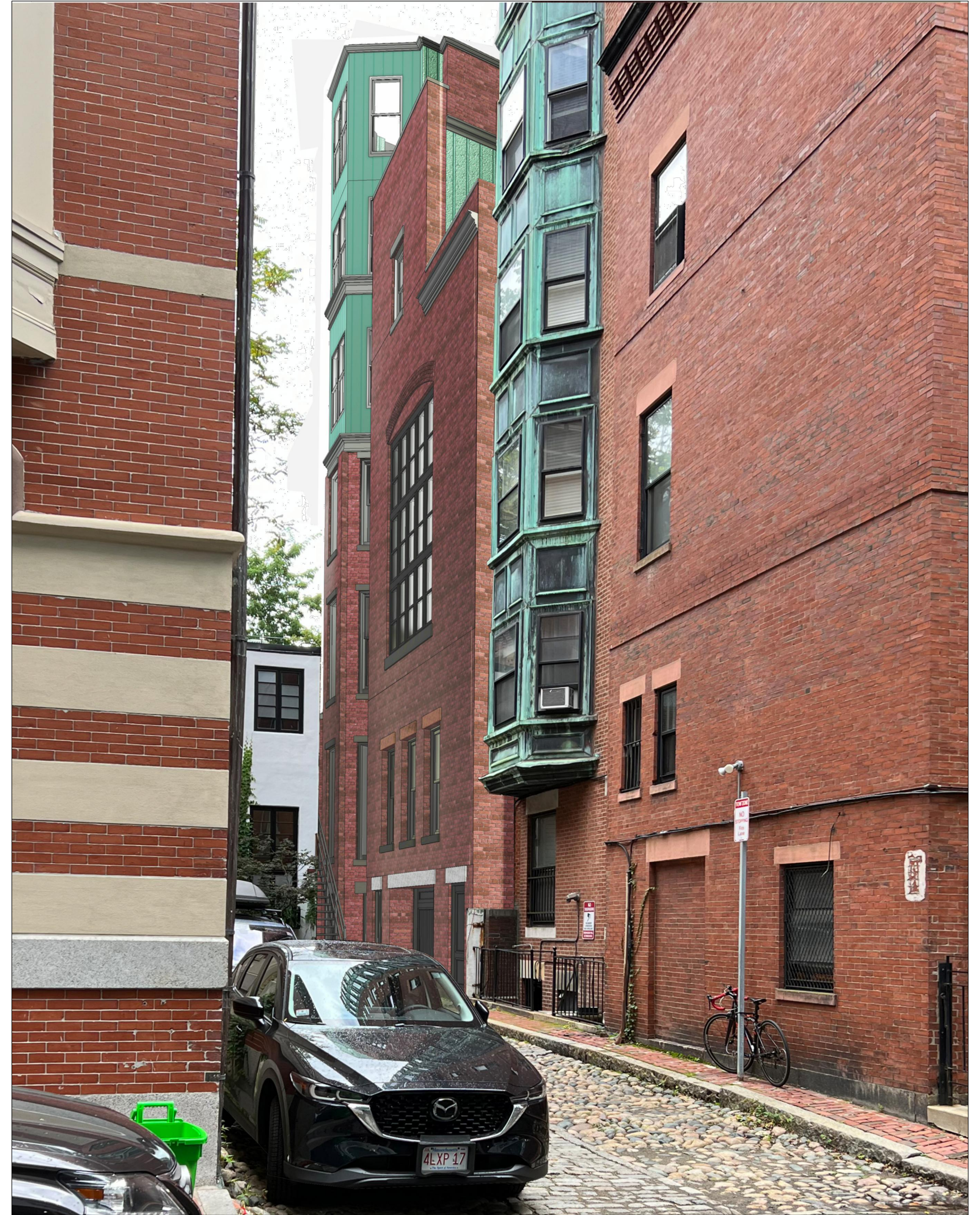
2 INVISIBLE DOOR DETAIL THROUGH WINDOW SILL
 SCALE: 1-1/2" = 1'-0"



3 INVISIBLE DOOR PLAN DETAIL
 SCALE: 1-1/2" = 1'-0"



EXISTING VIEW FROM SPRUCE STREET



PROPOSED VIEW FROM SPRUCE STREET
(PREVIOUSLY SUBMITTED)



EXISTING VIEW FROM SPRUCE STREET



PROPOSED VIEW FROM SPRUCE STREET



EXISTING VIEW FROM SPRUCE STREET



PROPOSED VIEW FROM SPRUCE STREET



EXISTING VIEW FROM SPRUCE STREET



PROPOSED VIEW FROM SPRUCE STREET