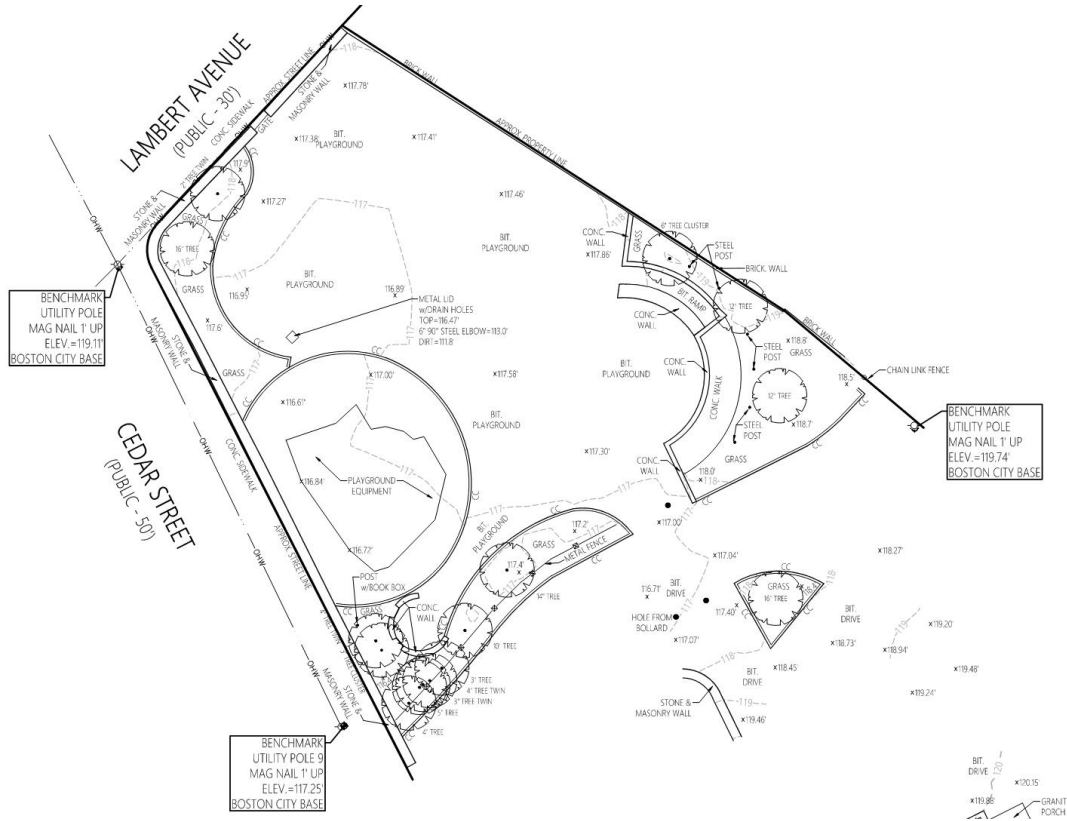


# EXISTING CONDITIONS: AERIAL



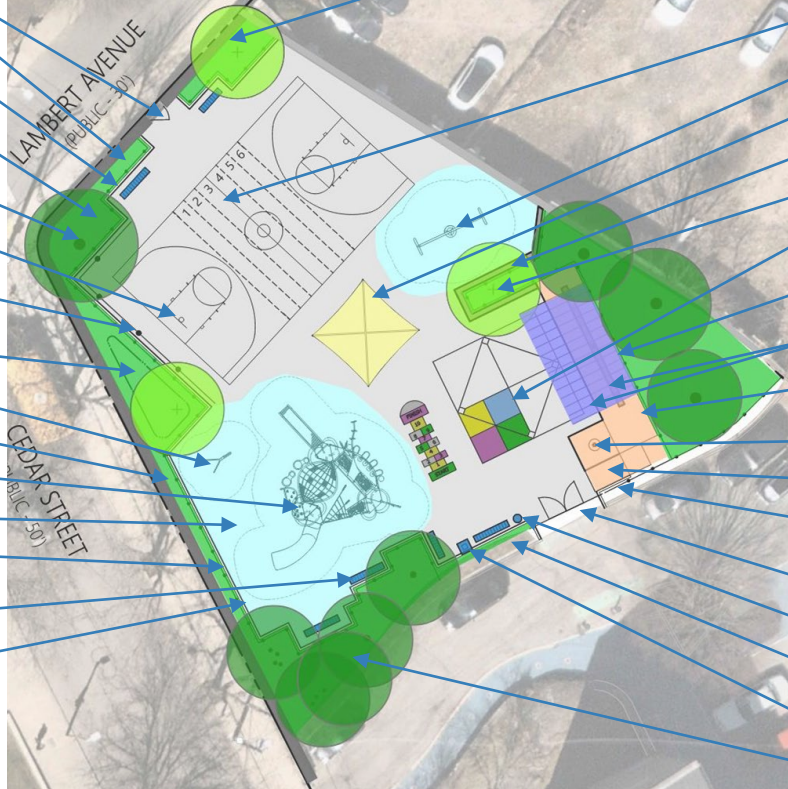
# EXISTING CONDITIONS: SURVEY



# SCHEMATIC DESIGN



EMERGENCY PATCH PUDDINGSTONE WALL INTERIOR



NEW ORNAMENTAL ALUMINUM GATE

2" TWIN INVASIVE TREE TO BE REMOVED

36" TALL ORNAMENTAL FENCE

NATIVE PLANTING BEDS

TREES TO REMAIN, TYPICAL

2 BASKETBALL HOOPS  
(~58'x34' NON-STANDARD)

8' METAL MESH SCREEN MOUNTED ON POSTS

POTENTIAL RAIN GARDEN FOR STORMWATER  
MANAGEMENT

SMALL PLAY EQUIPMENT

4" CALIPER TILTING TREE TO BE REMOVED

MAIN PLAY EQUIPMENT

POURED IN PLACE RUBBER SURFACING

36" TALL ORNAMENTAL FENCE

PROPOSED BENCHES, TYPICAL

CONCRETE CURBING, TYPICAL

PAINTED PICK-UP LINES

SMALL PLAY EQUIPMENT

POTENTIAL 16'x16' SHADE CANOPY

CONCRETE SEATWALL

PROPOSED TREE, TYPICAL

DECORATIVE COLORED PAVING (KICKBALL, ETC.)

POTENTIAL STEEL SHADE CANOPY

2-TIER CONCRETE AMPHITHEATER SEATING

36" TALL ORNAMENTAL FENCE

FLAGPOLE

ADA RAMP

48" TALL ORNAMENTAL ALUMINUM FENCE

48" TALL ORNAMENTAL ALUMINUM DOUBLE GATE

TRASH RECEPTACLE

EXISTING DECORATIVE FENCE TO REMAIN

FREE LIBRARY, BY OTHERS

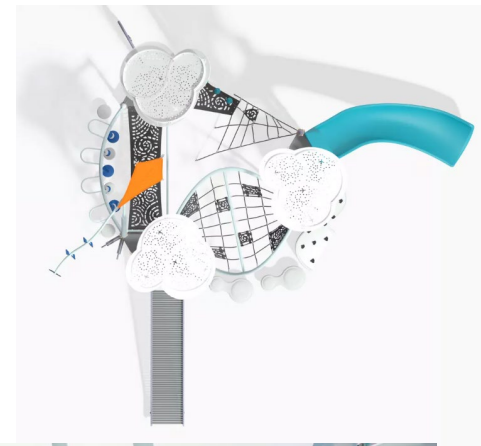
3" CALIPER INVASIVE TREE TO BE  
REMOVED TO REDUCE CROWDING



# MAIN PLAY EQUIPMENT - BILLOWS



- Compact circuit
- Shade 'clouds' w/airplane details
- Alpine Slide and Rollerslide, Flex Climber, SwiggleKnots bridge, Mobius Climber, etc.



# PAINTED SURFACE



# SHADE CANOPY : will be either/both of the options below



\* Color will depend on palette chosen for the Main Play Equipment



Single Post Shade Sail, 16'x16'



Cantilevered Steel Pre-Engineered Roof over Amphitheater 15'x26'



# SITE AMENITIES



Concrete Seat Wall w/ Wave Imprint



2-Tier Concrete Amphitheater



# SITE FENCING



\* Color will depend on palette chosen for the Main Play Equipment



8' Metal Mesh Screen w/Colorful Posts



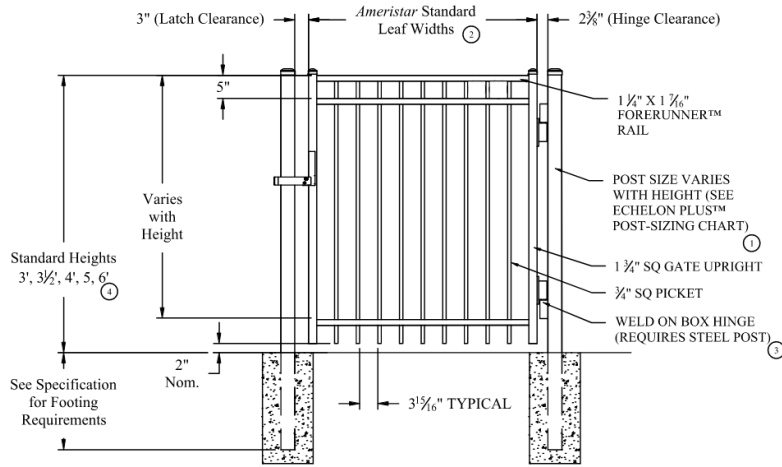
36" Ornamental Fence – to be mesh screen as shown on the left, OR simple aluminum fence as above, depending on budget



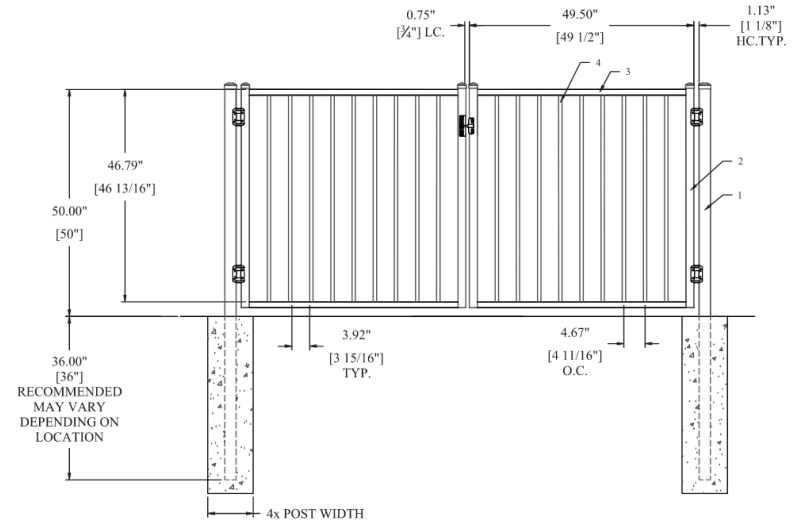
# SITE GATES & FENCING



(Photo for aesthetic reference only)



**New Ornamental Aluminum Gate at Lambert Ave,  
3 rail, black color.  
(Existing opening in puddingstone wall will be  
reused, the wall will not be disturbed.)**



**48" Ornamental Aluminum Double Gate, 2 rail, black color.  
48" fence to match**

# SITE FURNISHINGS



Potential River Rock Rain Garden

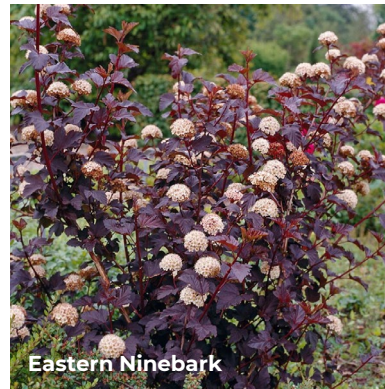
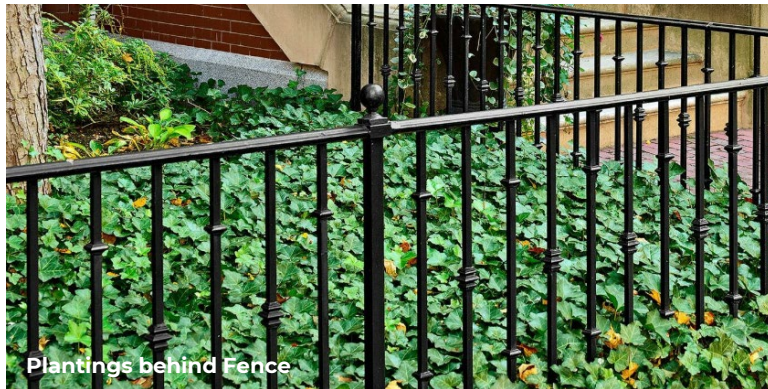


PIP rubber surfacing

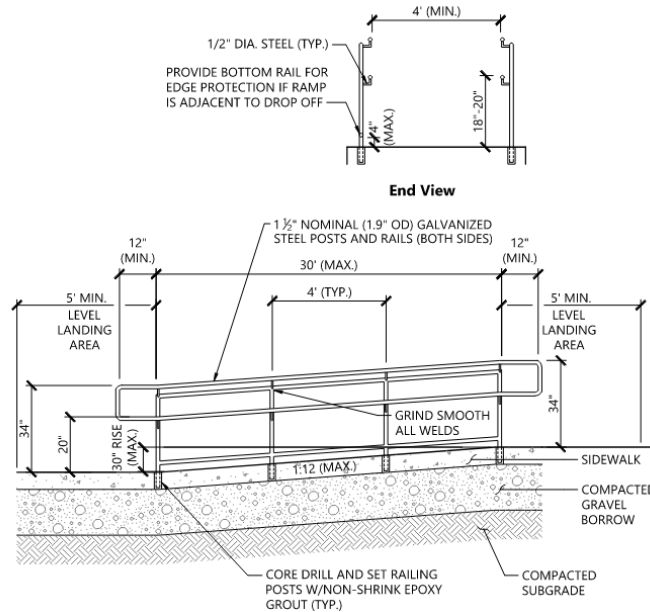
# NATIVE PLANTINGS



Red Maple



# ADA RAMP WITH HANDRAILS



## NOTES

- FOR ADDITIONAL INFORMATION SEE 521 CMR 24.00 RAMPS.
- REFER TO SIDEWALK DETAIL FOR SIDEWALK CONSTRUCTION.

Schematic ADA Ramp with Handrails



# SMALL EQUIPMENT : will be two of the options below



\* Color will depend on palette chosen for the Main Play Equipment



# FURNISHINGS: will be two of the options below

\* Color will depend on palette chosen for the Main Play Equipment



**Sleek Bench \***



**Trash/Recycling Combination**



**Kaleidoscope Bench \***



**Frog Trash Receptacle**



# WALL PATCH: Puddingstone wall poses a danger due to voids in the wall inside the playground



Patching inside the playground to consist of:

- Cleaning out the cavities as much as possible
- Infill with granite set in concrete within the wall
- Hand tool mortar joints to match existing using darker Type 2 mortar

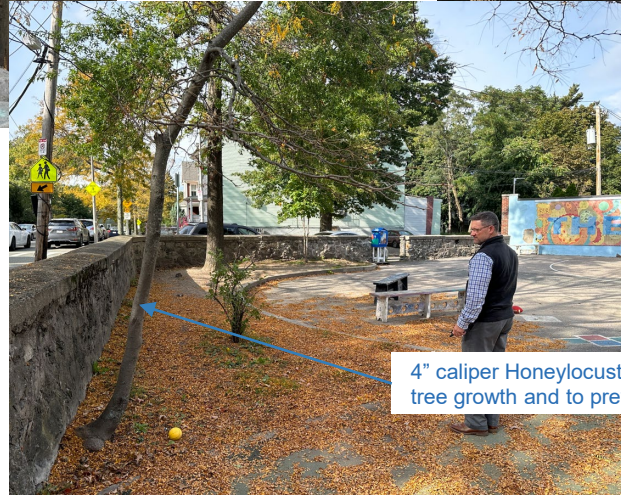
# SMALL TREE REMOVALS:



3" caliper Norway Maple (invasive), to be removed to reduce overcrowding among ornamental and invasive trees



2" caliper twin Norway Maple (invasive), to be removed due to poor tree health and allow more resources for native Oak nearby



4" caliper Honeylocust, to be removed due to tilting/unhealthy tree growth and to prevent further wall damage

**Note:** Three new native trees will be planted within the playground.

