



2023 - 2024

# Planning Council Meeting

Thursday, November 9th, 2023

4:00 pm - 6:00 pm

Non Profit Center

89 South St.

Boston, MA 02111

Zoom Link: <https://us02web.zoom.us/j/9178940335?pwd=bk94emJRZmZnSy9ONUJvZmhTMEMOQT09>

---

## Welcome and Moment of Silence

4:00 pm

Darren Sack, PC Chair

## Attendance & Icebreaker

4:05 pm

PCS

## October 12th, 2023 Minutes Review & Vote

4:20 pm

Darren Sack, PC Chair

## Agency Updates & Committee Reports

4:25 pm

Agency Representatives & Committee Chairs

## Anti-Stigma Campaign Update

4:40 pm

PCS

## Boston EMA Epidemiology Profile

4:50 pm

Sarah Kuruvilla, RWSD Clinical Quality Management

## AccessHealth MA HDAP Portal Q&A

5:20 pm

AccessHealth MA/Melanie Lopez, RWSD Client Services

## Review of Funding Streams Expo

5:35 pm

Darren Sack, PC Chair

## Announcements, Evaluations, Adjourn!

5:50 pm

Darren Sack, PC Chair



**Boston EMA**  
**Ryan White**  
**Planning Council**



# Planning Council


## November 9, 2023

**Darren Sack | Chair**  
**Margaret Lombe | Chair-Elect**



# Moment of Silence

At this moment, let's take a moment of  
silence in remembrance of those who  
came before us, those who are present,  
and those who will come after us.



The background is a dark green color with various decorative elements. In the top left, there is a purple flower with a white center and three small white dots. In the top center, there is a branch with two red berries and two green leaves. In the top right, there is a pink flower and a branch with red leaves. In the bottom left, there is a slice of watermelon and a green leaf. In the bottom center, there is a purple flower. In the bottom right, there is a brown leaf and a slice of watermelon. The word "Attendance" is written in a large, white, serif font in the center of the page.

# Attendance

# Agenda

**01**

**October 12 Minutes  
Review & Vote**

**02**

**Agency Updates &  
Committee Reports**

**03**

**Anti-Stigma  
Campaign Update**

**04**

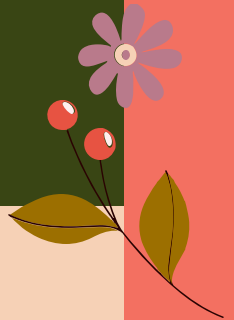
**Boston EMA  
Epidemiology  
Profile**

**05**

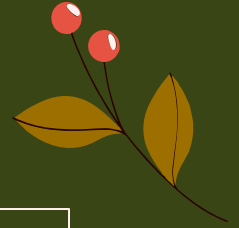
**CRI/AccessHealth  
HDAP Portal Q&A**

**06**

**Review of Funding  
Streams Expo**



# October 12th, 2023 Minutes



- State your name to make a 1st or 2nd Motion to approve minutes
- Show of hands for approval, opposed, and abstain in the room
- Poll on Zoom for those who are online



# Agency Updates

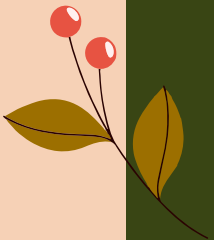
**Melissa Hector** | Mayoral Liaison

**Barry Callis** | MA Department of Public Health

**Yvette Perron** | NH Department of Health & Human Services

**Alison Kirchgasser** | MassHealth

**Tegan Evans** | Boston Public Health Commission



# Committee Reports

## MNC

- Reviewed members' attendance
- Discussed Mentorship Program and first mentorship mixer
- Reviewed recruitment materials and potential calendar of recruitment events

## SPEC

- Regina shared a member spotlight
- Carlton was elected VC!
- RWSD did a deep dive into service standards
- We reviewed the Core Medical Funded Service Categories

## Consumer

- Continued planning for education sessions for the year
- Anti-Stigma Campaign Update
- BPHC presented findings from a needs assessment and led a discussion on the topics from the assessment

## NRAC

- Reviewed Committee Charge, Workplan and Year End Recommendations
- Reviewed Conflicts of Interest and identified every member's
- Discussed the Needs Assessment timeline and brainstormed ideas to focus on
- Nominated Vice Chairs to be elected on Nov. 16!

## Exec

- Debriefed Attendance and Evaluations from each October meeting
- Discussed reflectiveness
- Michael S. introduced the Governing Docs & Restructuring Working Group
- Finalized revisions to Attendance Policy



# Attendance Policy Updates

- Four (4) excused absences and two (2) unexcused absences, or six (6) absences total
- After three (3) unexcused absences from meetings → warning letter from the Mayoral Liaison to the Planning Council
- Members who accrue six (6) absences will risk removal from the Planning Council – up to the discretion of MNC and Exec

**Excused Absence =**  
Illness, pre-planned vacation, conference, other work-related commitment or event, military-related service, bereavement, jury duty, etcetera

LET PCS KNOW IF YOU WILL BE LATE OR ABSENT!



## Definition of Attendance =

Members are expected to arrive on time to all Planning Council and Committee meetings.

- Arrive within the first 30 minutes of the start of the meeting and stay for the duration of the meeting unless otherwise communicated with PCS staff.
- If a member is over 30 minutes late and does not communicate with PCS, circumstances will be reviewed with PCS, MNC and Exec.

Read the full policy on Basecamp here:



# Someone You Know and Love: Anti-Stigma Campaign Update

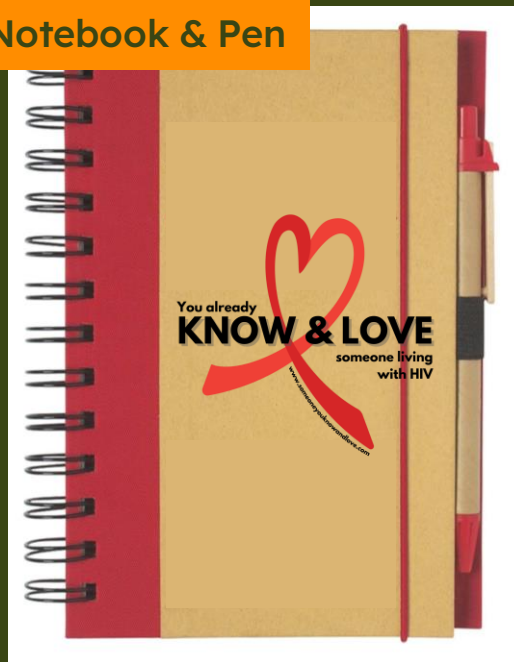
## Website:

- Website is in progress!
- Send feedback to us or directly to Hana (hwallen@bphc.org)

## Merch:

- Stickers, enamel pins and notebooks have been ordered

Notebook & Pen



Sticker 1



Sticker 2



Enamel Pin



# You are invited...

**What?** Join us for a film screening, panel discussion and Q&A event celebrating those living long and productive lives with HIV. Learn about their milestones, challenges, setbacks, as well as the stigmas the panelists often faced over the years. Learn what they hope current and future clinicians, social workers, and public health professionals will say and do when you work with people living with HIV.

**Who?** Ryan White Planning Council members, BPHC staff, and BU students, faculty and staff

**When?** November 28th, 2023, 5 - 7 PM, food will be served!

**Where?** BU School of Dental Medicine (First Floor, Room G170), 635 Albany Street, Boston, MA 02118

Please register here:

<https://www.signupgenius.com/go/60B0A4CADAC2AA5FC1-45736894-someone#/>

RYAN WHITE PLANNING COUNCIL PRESENTS

You already

# KNOW & LOVE

someone living  
with HIV

AN ANTI-HIV  
STIGMA  
CAMPAIGN

Tuesday  
Nov. 28th, 2023  
5 - 7 PM

Boston University  
Goldman School of Dental Medicine  
First Floor, Room G-170  
635 Albany Street, Boston, MA

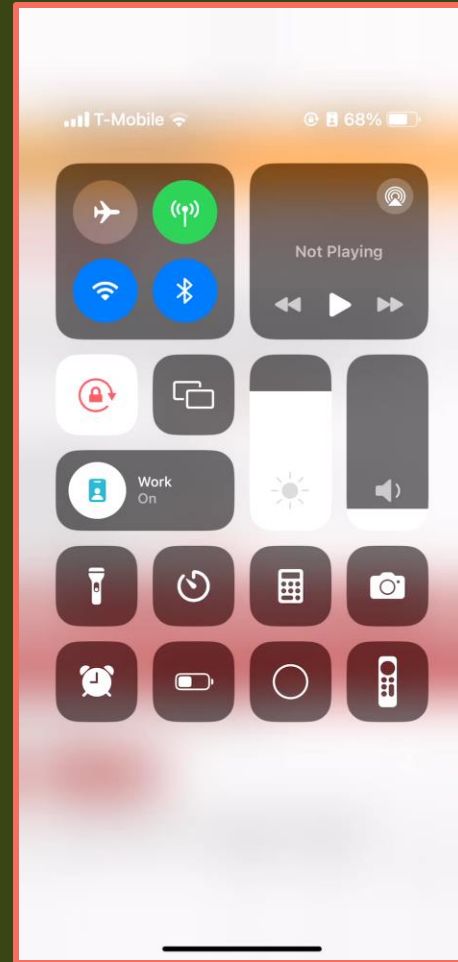


Join us for an event celebrating the lives of those living with HIV and educating all of us about HIV stigma!

Scan this QR code to RSVP today!



# Sign Up Now!



# DEMOGRAPHIC PROFILE OF BOSTON EMA

November 9, 2023

Ryan White Services Division | Boston Public Health Commission

Sarah Kuruvilla, CQM Sr. Program Manager

**BOSTON  
PUBLIC  
HEALTH  
COMMISSION**



# Presentation Objectives

- To provide a snapshot view of who the Boston EMA Ryan White Part A Program serves
- To share insight into demographics of the Part A population that helps contextualize planning and decision-making this planning cycle
- To familiarize Planning Council members with e2Boston data

# Presentation Roadmap



- About our data
- Demographic overview of the Boston EMA
- Discussion: How Planning Council can use data?





# About Our Data





# e2Boston

- e2Boston is a cloud-based database for Ryan White Part A
- Each agency is responsible for entering its own Part A clients' utilization, demographic, and medical/outcomes information
- All Part A clients:
  - Are HIV positive
  - Reside within the 10 counties of the Boston EMA
  - Have an income at or below 500% of the Federal Poverty Line (FPL)



# Purpose & Utility of Our Data

- Estimate needs for HIV/AIDS prevention
- Identify populations at risk
- Qualify for federal HIV/AIDS prevention and treatment
- Monitor incidence and prevalence of diagnosed HIV infection and AIDS
- Distribute federal HIV/AIDS prevention and treatment funds according to disease incidence and prevalence
- Target prevention activities and treatment services and evaluate their effectiveness
- Allocate funds for healthcare and social services
- Routine follow-up for priority cases
- Understand who is impacted
- Track HIV-related morbidity and mortality
- Detect trends in HIV transmission



# Glossary

## **MSM**

Men who have sex with men

## **IDU**

Injection drug use

## **MSM/IDU**

Men who have sex with men and also inject drugs

## **Perinatal**

HIV contracted during pregnancy/childbirth

## **Pediatric**

Children aged 12 years or younger

## **Heterosexual Contact**

Engaged or engages in sex with someone of the opposite sex and knows their partner's or partners' risk for HIV infection or HIV status

## **Presumed Heterosexual**

Females who reported having sex with males, denied injection drug use exposure, and does not know their partner's or partners' risk for HIV infection or HIV status

## **Other/Unknown**

All major risk categories are unknown



# Glossary, continued

## HIV Care Continuum

Steps PLWHA go through from diagnosis, linkage to care, engagement in medical care, retention in care, and viral suppression



### Linkage to Care (30/90)

Rate at which clients attended a routine medical care visit within 30/90 days of an HIV/AIDS diagnosis



### Retained in Care

Number of clients who had at least two viral load tests, CD4 tests, or medical visits at least 3 months apart within 12 months of diagnosis



### Viral Suppression

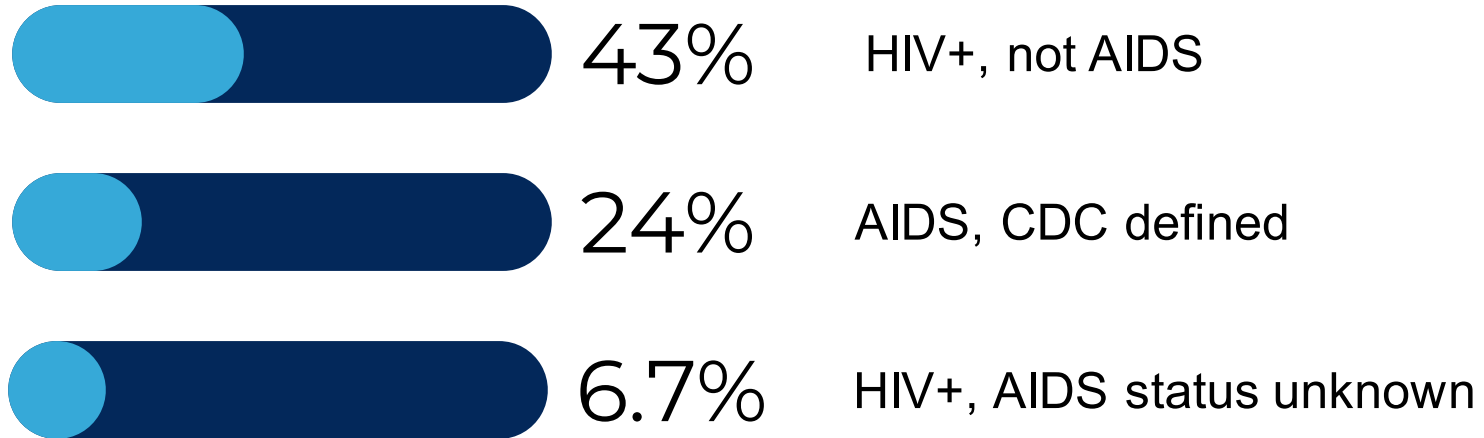
Clients who reach an HIV viral load of fewer than 200 copies, or “undetectable”



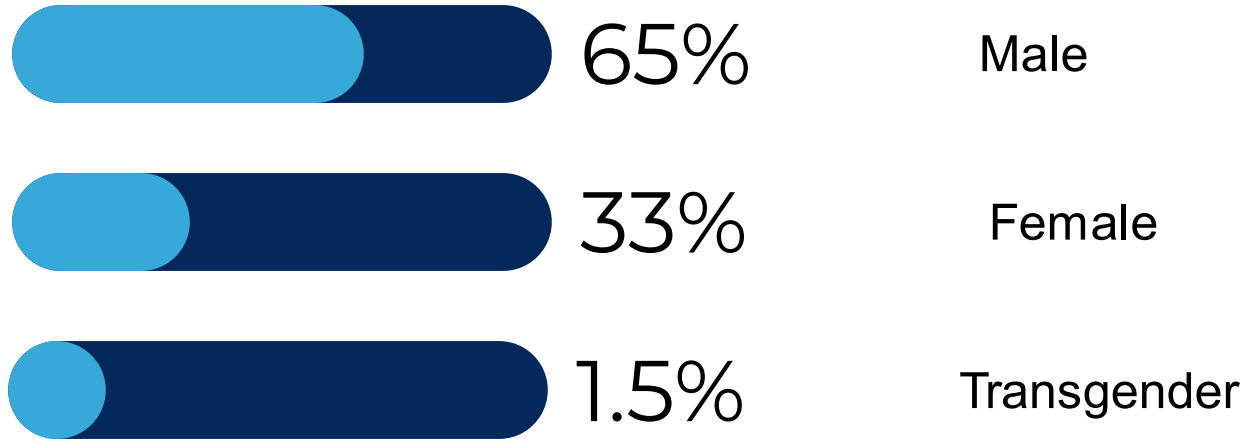
# Demographic Overview



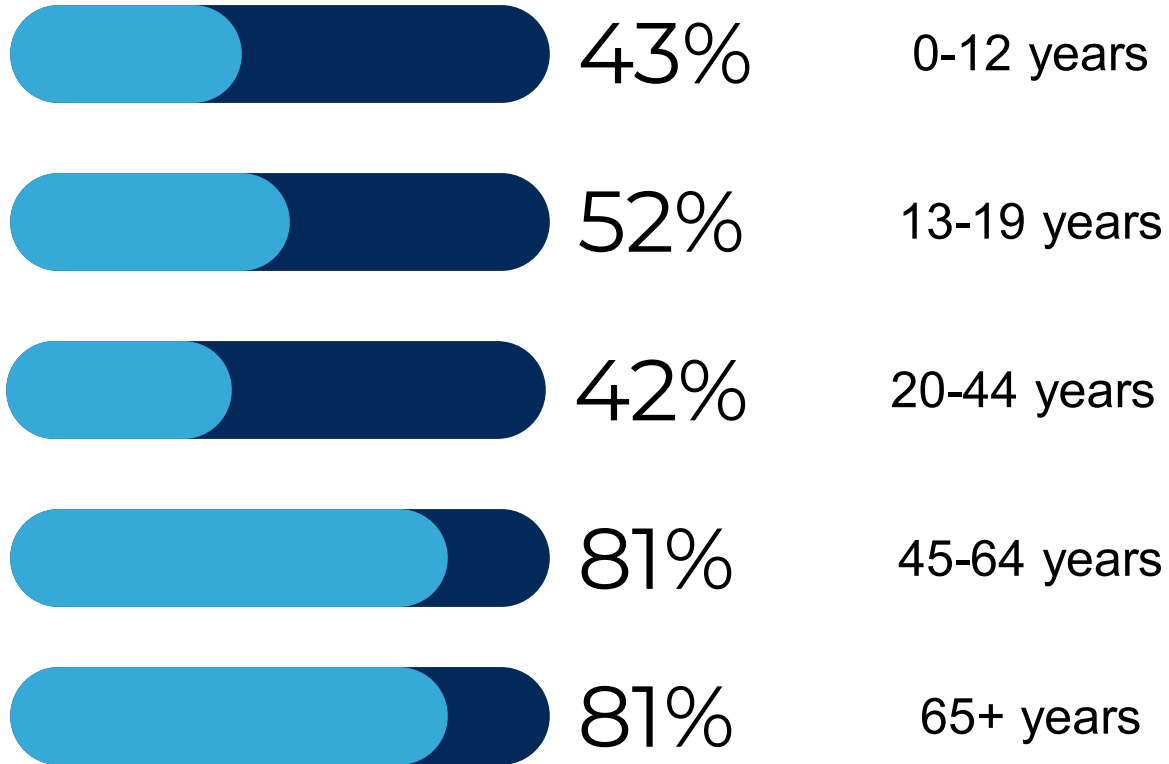
# Diagnostic Information



# Gender

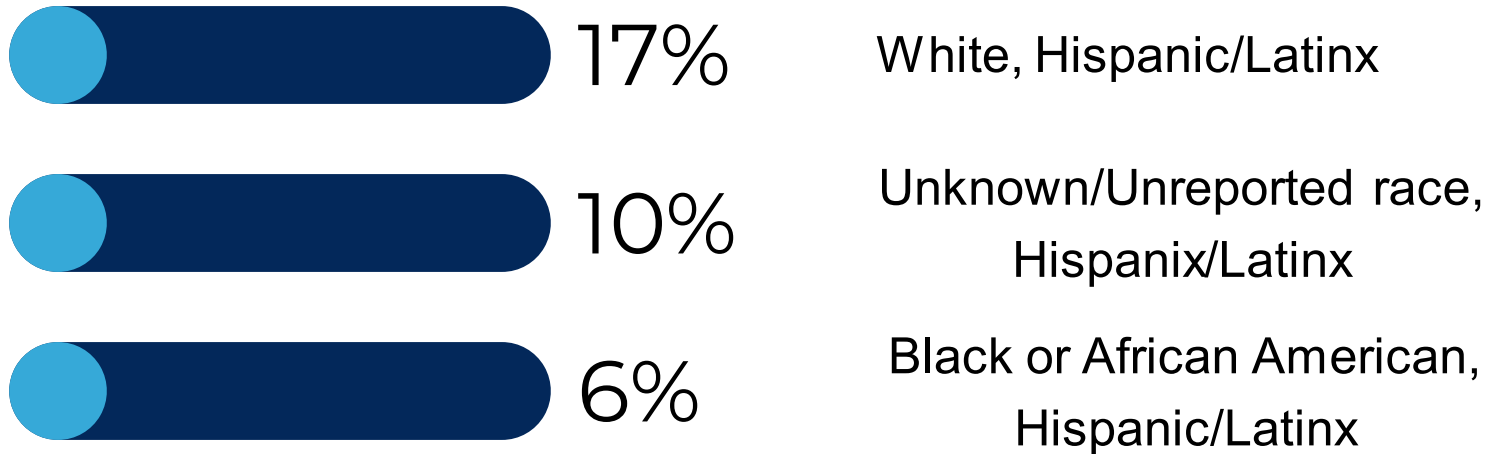


# Age



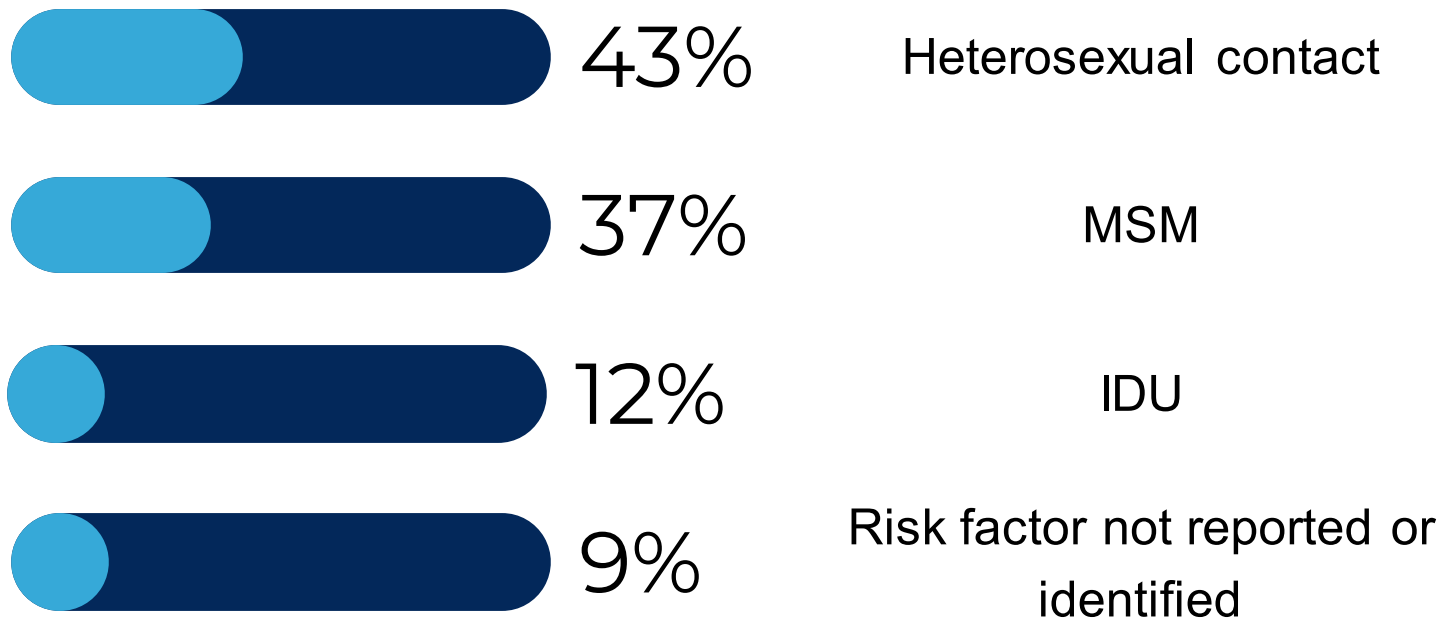


# Race and Ethnicity\*

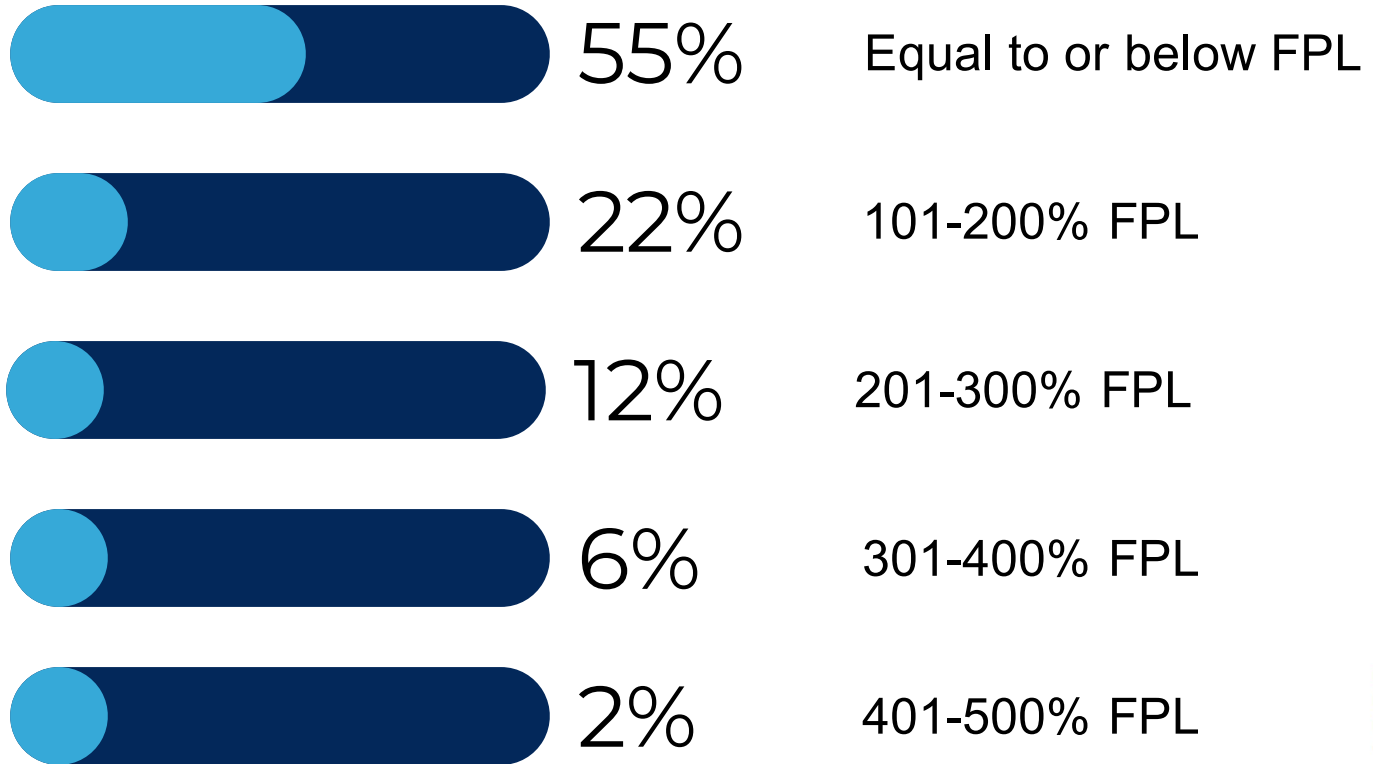


\*Only highest 3 race/ethnicity categories presented.

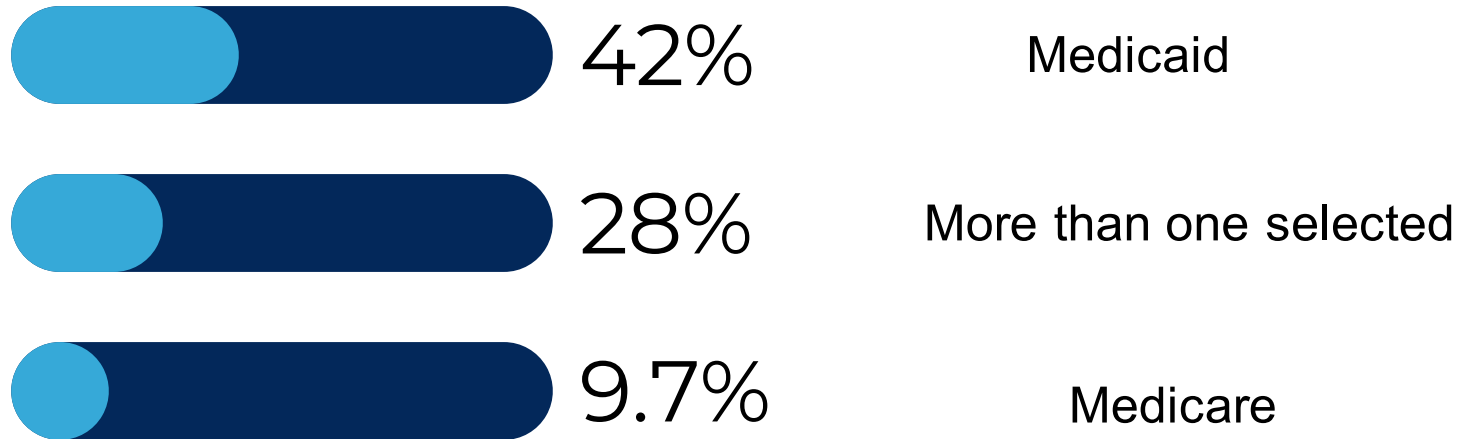
# Exposure Category



# Income

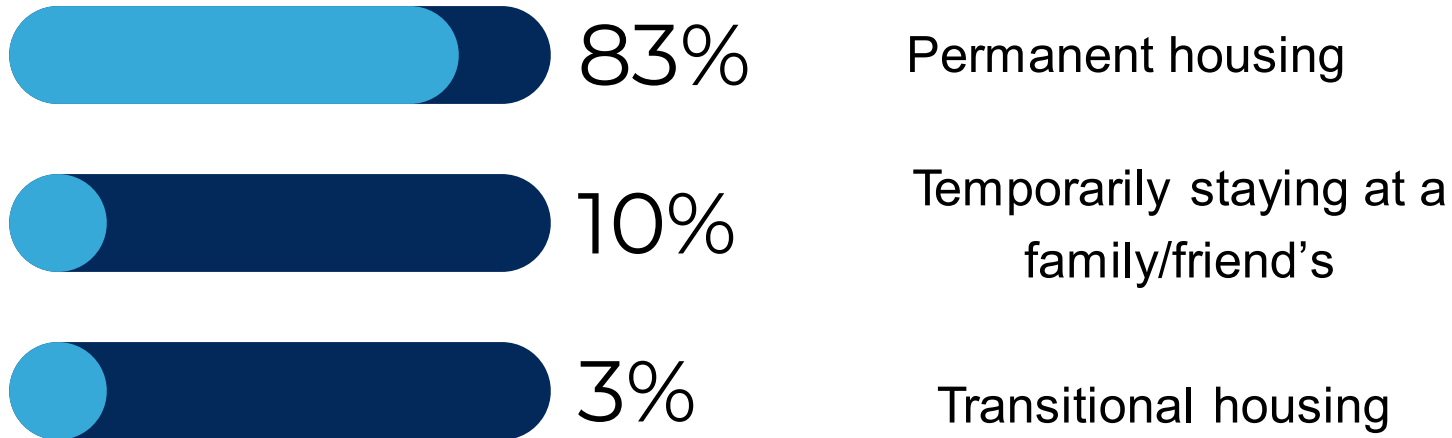


# Health Insurance Status\*



\*Only highest 3 health insurance status categories presented.

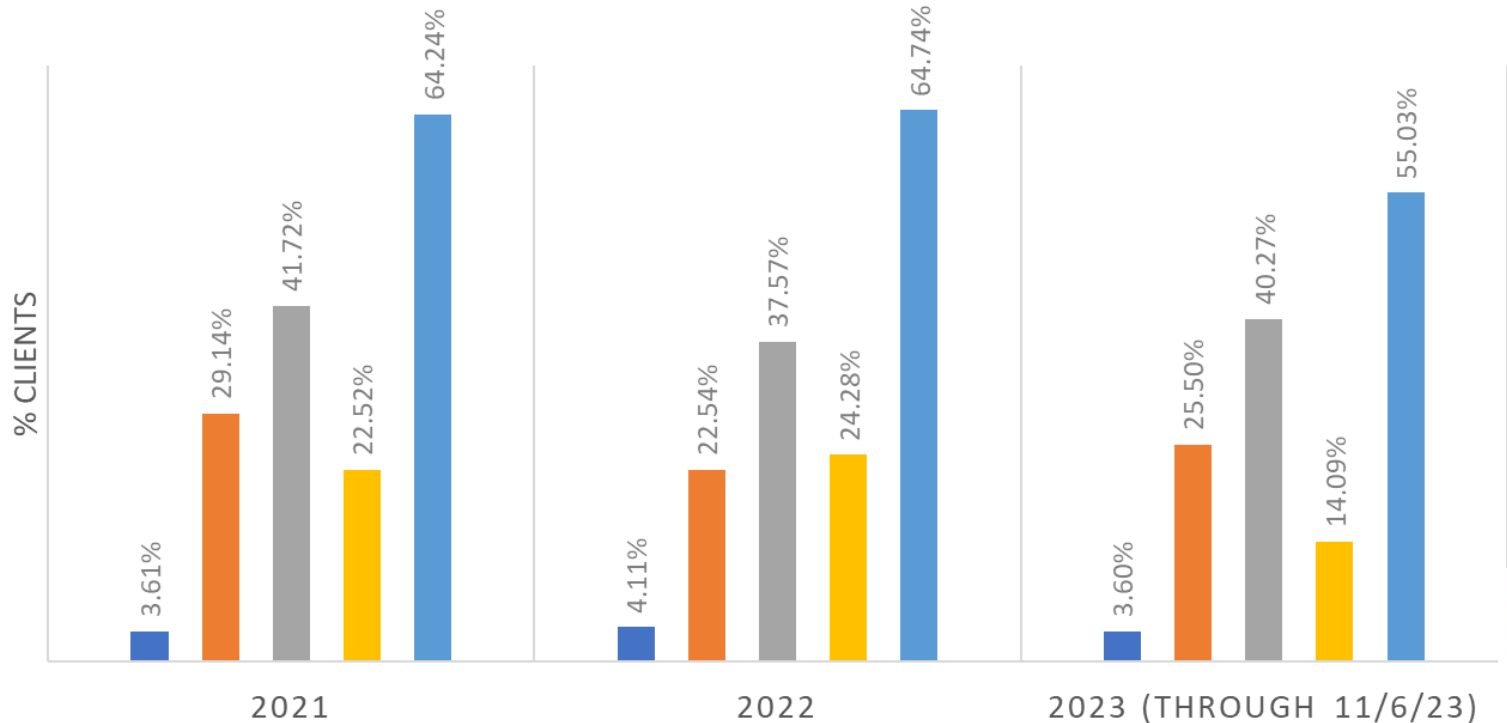
# Housing/Living Arrangement\*



\*Only highest 3 housing/living arrangement categories presented.

## HIV CARE CONTINUUM AMONG NEWLY DIAGNOSED CLIENTS, 2021-23

- Newly Diagnosed Clients
- Linkage to HIV Medical Care (90 Days)
- Viral Suppression
- Linkage to HIV Medical Care (30 Days)
- Annual Retention in Care



# Discussion



# **At your table, discuss the following (~20 min):**

- 1. In your experience, what do you think are key contributors to the demographic trends that were presented to you today?**
- 2. As the Planning Council year continues, how will you use data/information to make decisions in this space?**
- 3. What other questions do you need answered to make decisions on the Planning Council? What other data do you need?**





**Thank You**



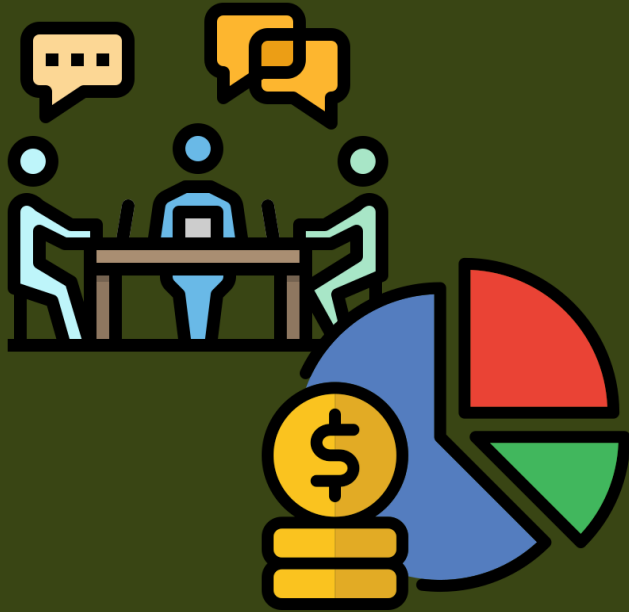


# COMMUNITY RESOURCE INITIATIVE

Let's welcome Community Resource Initiative (AccessHealth MA) to answer any questions about their new HDAP online portal!



# Review Funding Streams Expo



- Planning Council on December 14<sup>th</sup>, 2023 will be fully in person at Nonprofit Center (89 South St., Boston, MA)
- There will NOT be a Zoom option for this meeting!

# What is a funding stream?

Funding streams typically indicate the various, different funding amounts available for a grant program.

# What is the Funding Streams Expo?

The Funding Streams Expo is during our December 14<sup>th</sup> Planning Council meeting. Representatives from all different funding stream organizations that fund HIV/AIDS core medical and support services will be joining us as we facilitate an activity to learn more about each stream and how Ryan White Part A fits into the picture.

# What is my responsibility as a member?

Show up! This meeting is IN PERSON ONLY!

December 14<sup>th</sup>, 2023, 4 – 6 PM, Nonprofit Center, 89 South St., Boston, MA

# Announcements

- Sign up for your Community Servings Volunteer day!
- Nov. 28, 5 – 7 PM: Someone You Know and Love event at Boston University School of Dental Medicine
- Dec. 1, Noon – Midnight: Join SPOKE Art at City Hall Plaza for a vigil and processional on World AIDS Day, SYKL film showing at 4 PM!  
SPOKE Art Workshop for World AIDS Day memorial DUE TODAY!
- Dec. 14, 4 – 6 PM: Planning Council meeting IN PERSON ONLY for Funding Streams Expo!



**Scan for the meeting  
evaluation!**





Planning Council Meeting  
Thursday, November 9, 2023  
Non-Profit Center and Zoom  
4:00 PM - 6 PM

---

### Summary of Attendance

#### Members Present

Justin Alves  
Daniel Amato  
Mitchell Barys  
Stephen Batchelder  
Lamar Brown-Noguera  
Henry Cabrera  
Barry Callis  
Joey Carlesimo  
Moses Choi  
Stephen Corbett  
Sandra Custudio  
Larry Day  
Beth Gavin  
Robert Giannasca  
Reginia Grier  
Amanda Hart  
Melissa Hector  
Darian Hendricks  
Gerald James  
Allison Kirchgasser  
Liz Koelnich  
Jordan Lefebvre  
Margaret Lombe  
Shara Lowe  
Carlton Martin  
Ethan Ouimet  
Manuel Pires  
Yvette Perron  
Serena Rajabiun

Nate Ross  
Darren Sack  
Romini Smith  
Mairead Skehan Gillis  
Michael Swaney  
Bryan Thomas  
Catherine Weerts  
Kim Wilson

#### Members Excused

Stephen Batchelder  
Ericka Olivera  
Luis Rosa  
Karen White

#### Members Absent

Damon Gaines  
Lorraine Jones

#### Staff

Claudia Cavanaugh  
Clare Killian  
Vivian Dang  
Sarah Kuruvilla  
Melanie Lopez  
Roxy Dai  
Glenda Morrabal  
Tegan Evans

#### Guests

**Topic A: Welcome and Introductions**

The Chair of the Planning Council called the meeting to order and led a moment of silence. PCS team took roll call.

---

### **Topic B: Review 10.12.23 Meeting Minutes**

**Motion to Approve:** Bryan Thomas

**Second:** Liz Koelnych

**Result:** The 10.12.23 meeting minutes were approved, 14 people voting “yes” on Zoom, 2 abstained, and 11 voted “yes” in person.

### **Topic C: Agency Updates and Committee Reports**

Agency representatives give updates from their agencies.

#### **Mayoral Liason**

- For folks who may be looking to get boosted in the city, there is a Covid booster in the Nubian Square and at City Hall. All ages from 6 months plus, you can register online or walk in.
- In the process of updating data dashboard on website, looking for community folks to give us feedback. Can let Tegan or Melissa know to provide feedback.

#### **MA Department of Public Health**

- Inquiry about THRIVE Monday's- looking into support that they may need in the future.
- OHA Provider Meeting (11/9/23)
  - o Provider meeting in Framingham, 198 people attended and the focus was to acknowledge the work that providers did during the pandemic years.
- World AIDS Day 2023 – OHA and SPOKE Art partnership

#### **NH Department of Public Health**

- No updates

#### **MassHealth**

- MassHealth continues to redetermine all members. Please see MassHealth Eligibility Redeterminations | Mass.gov for more information.
- On October 16 MassHealth submitted a request to CMS to amend its 1115 Medicaid Waiver. MassHealth is also accepting comments on the request to provide temporary housing assistance and supportive services for families and pregnant individuals, including newly arrived immigrants, who are enrolled MassHealth members and who are eligible for Massachusetts' Emergency Assistance family shelter program. Comments are due by November 29, 2023. Please see 1115 MassHealth Demonstration ("Waiver") | Mass.gov for more information

#### **Boston Public Health Commission**

- Yesterday BPHC had received the approved medical service waiver for next year, which has to be applied each year in order to have additional funds to support services because they've been adhering in Massachusetts and MassHealth has been covering a lot of services.
- Will be starting site visits on Monday

#### **MNC**

- Reviewed members' attendance
- Discussed Mentorship Program and first mentorship mixer
- Reviewed recruitment materials and potential calendar of recruitment events
  - o Looking for more unaligned consumers

## SPEC

- Regina shared a member spotlight
- Carlton was elected VC!
- RWSD did a deep dive into service standards
- We reviewed the Core Medical Funded Service Categories

## Consumer

- Continued planning for education sessions for the year
- Anti-Stigma Campaign Update
- BPHC presented findings from a needs assessment and led a discussion on the topics from the assessment

## NRAC

- Reviewed Committee Charge, Workplan and Year End Recommendations
- Reviewed Conflicts of Interest and identified every member's
- Discussed the Needs Assessment timeline and brainstormed ideas to focus on
- Nominated Vice Chairs to be elected on Nov. 16!

## Exec

- Debriefed Attendance and Evaluations from each October meeting
- Discussed reflectiveness
- Michael S. introduced the Governing Docs & Restructuring Working Group
- Finalized revisions to Attendance Policy

After going over agency and committee updates, Chair goes over Attendance Policy Updates. Attendance Policy Updates are as follows:

- Four (4) excused absences and two (2) unexcused absences, or six (6) absences total
- After three (3) unexcused absences from meetings → warning letter from the Mayoral Liaison to the Planning Council
- Members who accrue six (6) absences will risk removal from the Planning Council – up to the discretion of MNC and Exec.

Chair reminds to members that this is not a way to penalize members, but we want members to let us know if they cannot make it to the meetings. There are many ways to let PCS know if you cannot make it to the meeting.

### **Topic D: Anti-Stigma Campaign Update**

PCS gives an update about the Someone You Know and Love Anti-Stigma Campaign

- Website is in the works- any feedback regarding what to add on the website may be sent to PCS or our intern. Feedback is highly appreciated and encouraged!
- There is more merch that have been ordered. Merch consists of enamel pins, stickers, and notebooks
- There is a SYKL event at BU Goldman School of Dental Medicine on November 28<sup>th</sup>, 2023 from 5-7pm, which will show the SYKL film, followed by a panel discussion and Q&A event.
  - o Link to register: <https://www.signupgenius.com/go/60B0A4CADAC2AA5FC1-45736894-someone#/>
  - o PCS plays a video that shows a step by step procedure on how to register for the event



## Topic E: Boston EMA Epidemiology Profile

Sarah Kuruvilla, CQM Senior Program Manager for Ryan White Services Division, gives a presentation on the Demographic Profile of Boston EMA.

Objectives of the presentation are:

- To provide a snapshot view of who the Boston EMA Ryan White Part A Program serves
- To share insight into demographics of the Part A population that helps contextualize planning and decision-making this planning cycle
- To familiarize Planning Council members with e2Boston data

Sarah introduces e2Boston and what it is. Description is as follows:

- e2Boston (database at BPHC) is a cloud-based database for Ryan White Part A
  - o Each client is documented in this database.
  - o A member asked to explain aggregated data further. Aggregated data- everyone is grouped together, high-level data which is acquired by combining individual-level data.
- Each agency is responsible for entering its own Part A clients' utilization, demographic, and medical/outcomes information
- All Part A clients:
  - o Are HIV positive
  - o Reside within the 10 counties of the Boston EMA
  - o Have an income at or below 500% of the Federal Poverty Line (FPL)

Sarah goes over the purpose and utility of the data. She also goes over the glossary and some acronyms that are used (i.e. MSM men who have sex with men, IDU injection drug use, pediatric- children aged 12 or younger, heterosexual contact-engaged or engages in sex with someone of the opposite sex and knows their partner's or partners risk for HIV infection or HIV status, etc)

A member asks if mothers are still passing HIV onto their new-born babies, which Sarah had answered yes.

- A member comments saying that people who move to the U.S. to MA and did not know their status, ends up finding out about their status at the hospital where they deliver the baby, and this is because they never had care prior to delivering their baby.
- Another member says what they are seeing is the children of immigrants come with a positive diagnosis because they were perinatally infected in their home country.

Question: Is Presumed Heterosexual term used in NH as well?

Is this definition by DPH or CDC?

- Defined by HRSA.

A member mentions that they have never seen "presumed heterosexual" on any health doc in NH.

A member follows up and says this is only used in Massachusetts.

Question: Is MSM assuming sexual part or assuming how you classify yourself?

The response was based on sex assigned at birth.

Sarah proceeds with the presentation after some Q&A.

HIV Care Continuum- steps PLWHA go through from diagnosis, linkage to care, engagement in medical care, retention in care, and viral suppression.

Definitions:

*Linkage to Care*- rate at which clients attended a routine medical care visit within 30/90 days of an HIV/AIDS diagnosis

*Retained in Care*- number of clients who had at least two viral load tests, CD4 tests, or medical visits at least 3 months apart within 12 months of diagnosis.

*Viral Suppression*- Clients who reach an HIV viral load of fewer than 200 copies, or “undetectable”

Sarah goes over all multiple demographic overviews including diagnostic information, gender, age, income, and more.

For Health Insurance Status, only the highest 2 health insurance status categories were presented, which is why the HIV status category does not equate to 100%. Those include Medicaid at 42%, Medicare at 9.7%, and 28% for more than one selected.

Discussion questions followed by group answers: (go over it later)

1. In your experience, what do you think are the key contributors to the demographic trends that were presented to you today? Answers from the mini groups that were said during the meeting:
  - The accuracy of the data and consistency of entering the data
  - Breakdown by counties
  - Less stigmatizing languages, targeting specific areas where help is needed the most, reporting to other databases to ensure accurate data
  - Worry about the accuracy of some of the demographics data and maybe extra time allocated in that direction can help get the data out and make decisions. One thing seen with trends is that funds were moved away from peer support, and this takes the support that enabled new diagnosed persons to access support and health hand adherent to medication.
  - Speakers should make short clear points for people who aren't really data people so it is more concise and easier to look at, as well as look into trends, not just the current years.
  - Concerns on defining the risk categories, more definitions would be helpful
  - CQM team- what are you looking at that you want us to look at
  - Look at pre-covid pandemic numbers and data
  - Want to emphasize on accuracy and measurement of risk categories, getting more clarity on that and the definitions. I.e. housing, there was 13% that were in a transition or temporary housing that might think about what is happening there and housing affordability and losing subsidies may be impacting participants in the EMA.

Additional questions that were asked in the meeting and answered, but were not spoken out loud:

2. As the Planning Council year continues, how will you use data/information to make decision in this space
3. What other questions do you need answered/data do you need for your work on the Planning Council?

Some answers will be emailed or in evaluations.

### **Topic F: CRI/AccessHealth HDAP Portal Q&A**

Community Resource Initiative (previously AccessHealth MA), answers questions about their new HDAP online portal.

- clients can apply directly on the portal, there is pre-filled information, case managers can check status of applications so clients no longer have to call CRI and wait on the phone about HDAP application.

Randie and Alyssa from CRI joins and answers some questions about the new HADP online portal.

Question: What do you have set up for those that have a disability? If I wanted to do it myself, is there a capability for those that are visually impaired and blind?

- They are always happy to help if someone does not have a case manager to help them fill out the application at their office in Charlestown, for those that need any type of assistance, such as a disability.
- Someone from CRI will look more into this with access to the portal.

Question: Is PrEPDAP on there?

- PrEPDAP is not on the portal but CRI hopes to add it in the future!

Question: Do pharmacists have access to this portal as well?

They do not, it is a provider portal so if a pharmacist is working with a lot of HDAP patients, there is a possibility for limited access in the future.

- A member said to consider thinking about the pharmacist/Pharm Tech access, even if just a view option.
  - o The member continues saying that they spend a lot of time on the phone relaying information to pharmacists because they cannot see or have access to the patient info.

### **Topic G: Review of Funding Streams Expo**

Funding Streams Expo will be on December 14<sup>th</sup>, 2023 at Nonprofit Center, and there will not be a Zoom option for this meeting.

PCS goes over what funding streams are and defines it as: funding streams indicate the various, different funding amounts available for a grant program. PCS explains that during the Funding Streams Expo on December 14<sup>th</sup>, representatives from all different funding stream organizations that fund HIV/AIDS core medical and support services will be joining us as we facilitate an activity to learn more about each stream and how Ryan White Part A fits in the picture.

### **Topic H: Announcements, Evaluations, Wrap Up**

*Announcements:*

- Nov. 28, 5 – 7 PM: Someone You Know and Love event at Boston University School of Dental Medicine
- Dec. 1, Noon – Midnight: Join SPOKE Art at City Hall Plaza for a vigil and procession on World AIDS Day, SYKL film showing at 4 PM!
  - o SPOKE Art Workshop for World AIDS Day memorial DUE TODAY!
- Dec. 14, 4 – 6 PM: Planning Council meeting IN PERSON ONLY for Funding Streams Expo

New Bedford Community Health Center is doing a World AIDS Day event from 10:00am-2:00pm, one of our members, Sandra, will be doing a half an hour Q&A for PrEP.

### **Meeting to Adjourn**

**Motion:** Henry Cabrera

**Second:** Carlton Martin

**Result:** The meeting was adjourned at 5:55pm.

---