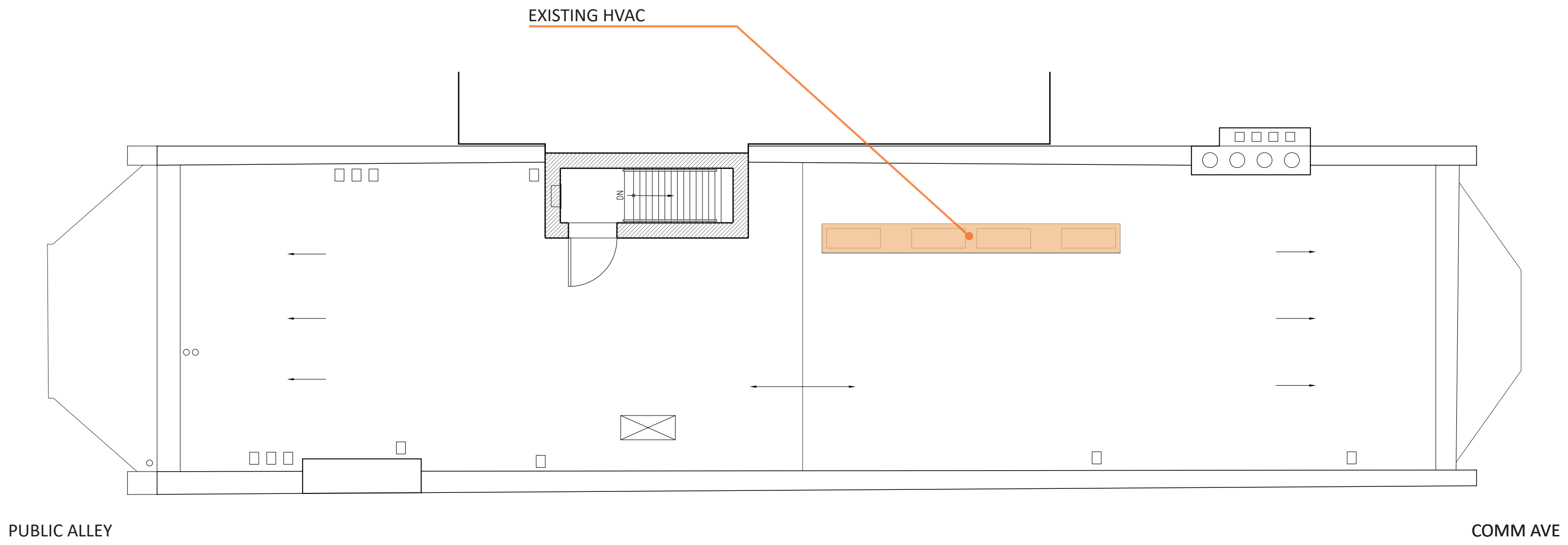




EXISTING HVAC

163 COMMONWEALTH AVE  
20 MARCH 2024

CATHERINE TRUMAN ARCHITECTS



PUBLIC ALLEY

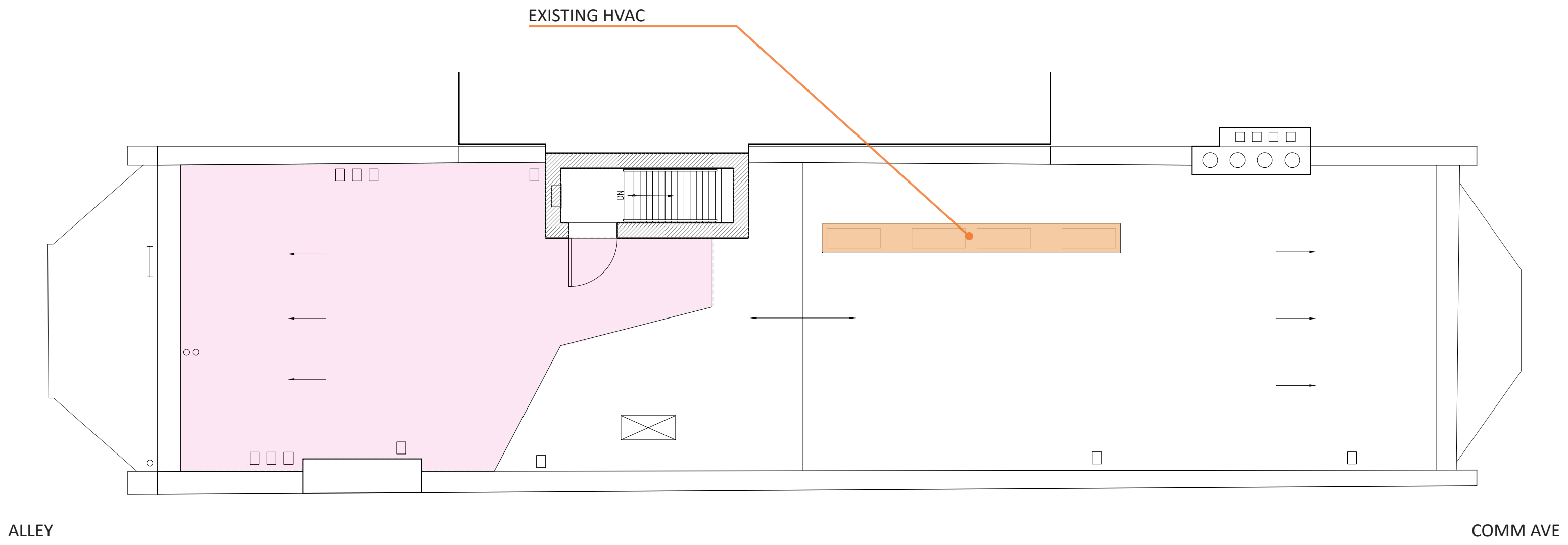
COMM AVE

EXISTING ROOF PLAN

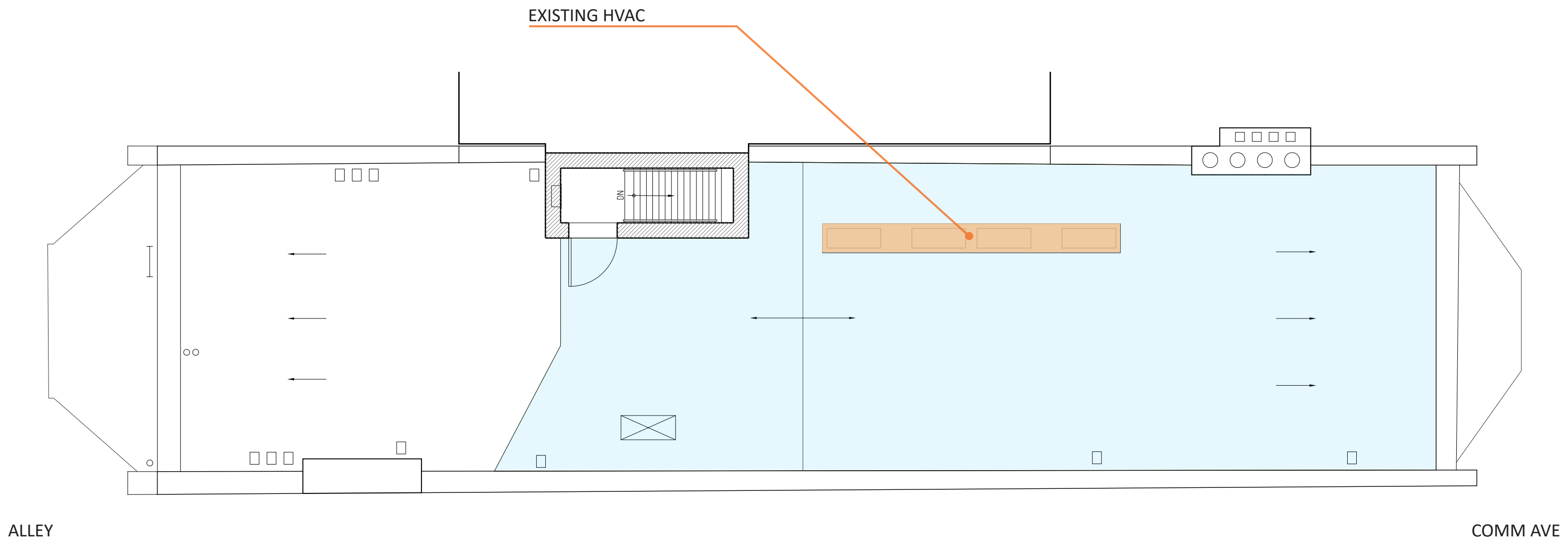
163 COMMONWEALTH AVE

20 MARCH 2024

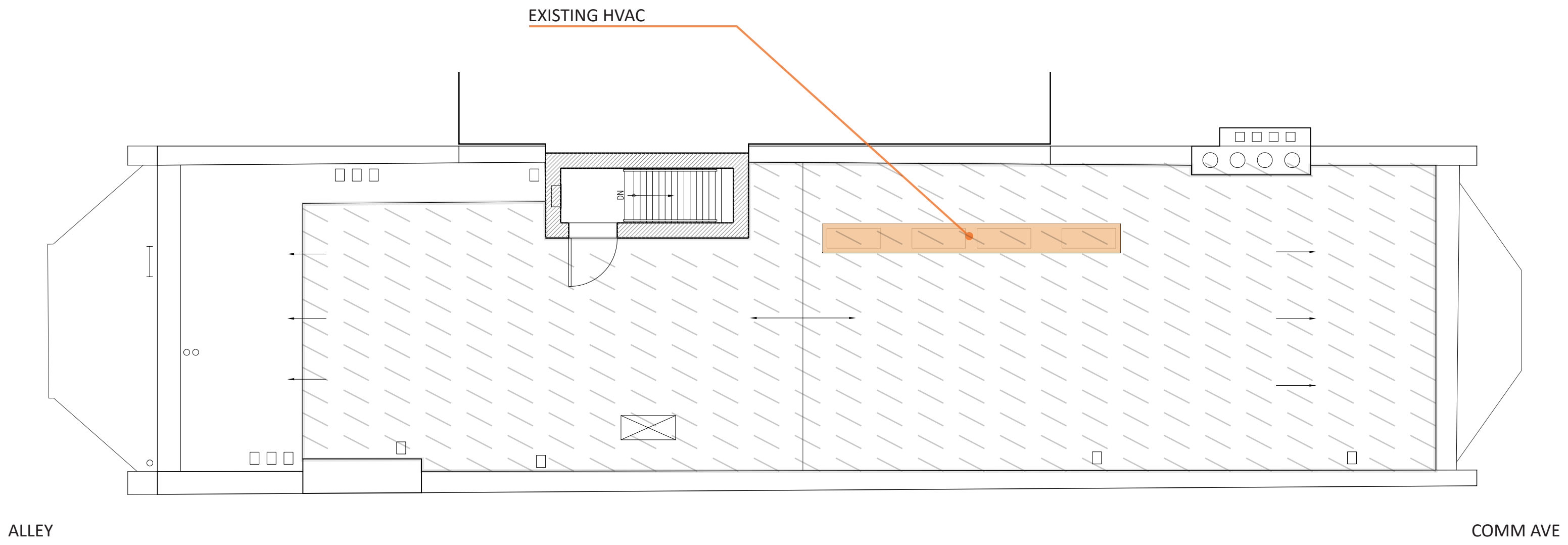
CATHERINE TRUMAN ARCHITECTS



SIGHT LINE ANALYSIS:  
 INVISIBLE FROM COMMONWEALTH AVE  
 163 COMMONWEALTH AVE  
 20 MARCH 2024  
 CATHERINE TRUMAN ARCHITECTS



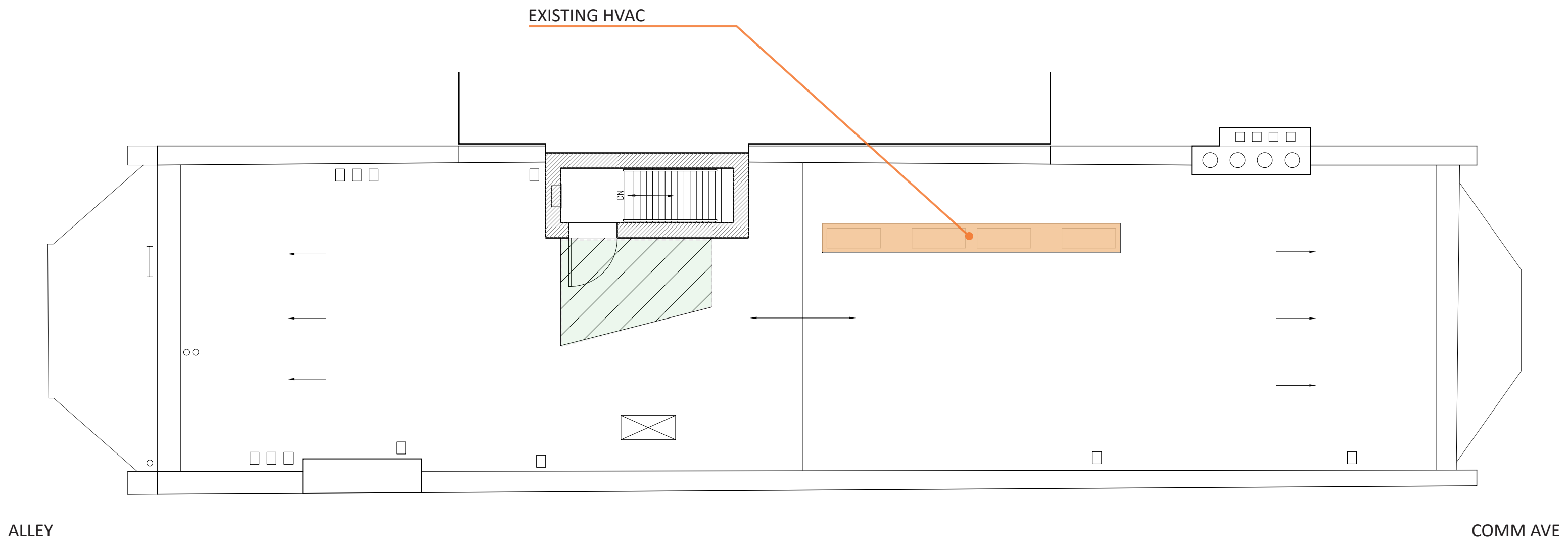
SIGHT LINE ANALYSIS:  
INVISIBLE FROM MARLBOROUGH STREET  
163 COMMONWEALTH AVE  
20 MARCH 2024  
CATHERINE TRUMAN ARCHITECTS



SIGHT LINE ANALYSIS:  
INVISIBLE FROM PUBLIC ALLEY 425

163 COMMONWEALTH AVE  
20 MARCH 2024

CATHERINE TRUMAN ARCHITECTS

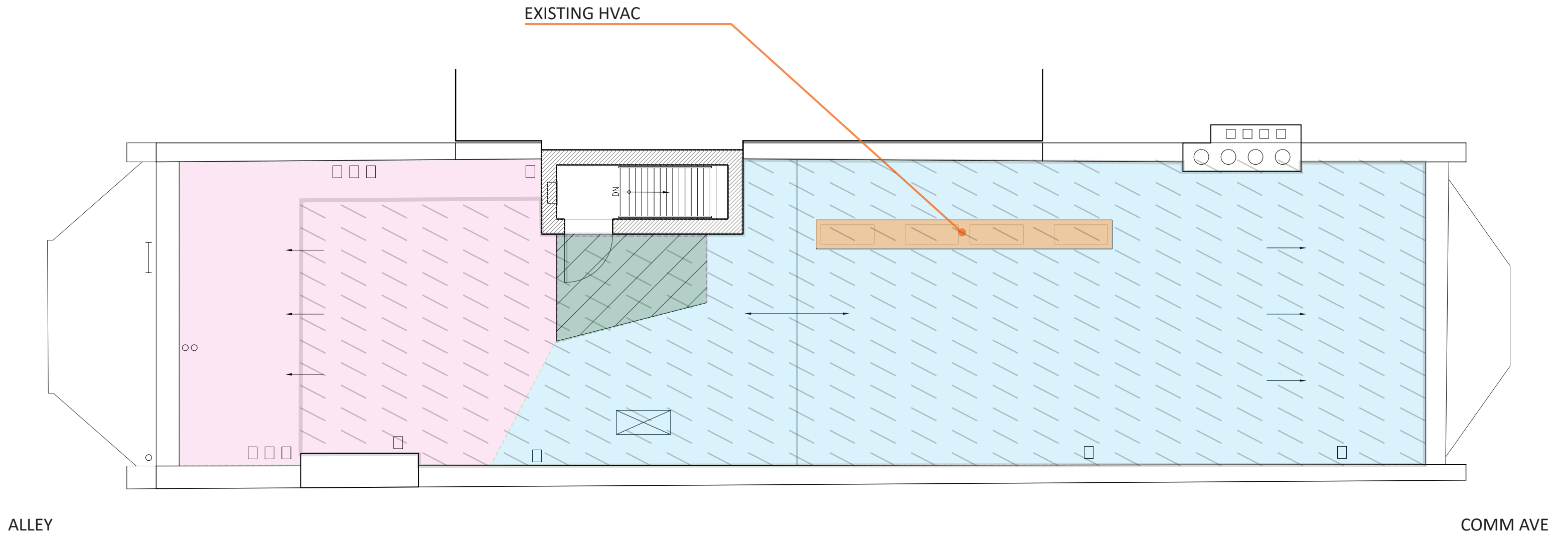


SIGHT LINE ANALYSIS:  
INVISIBLE FROM ALL

163 COMMONWEALTH AVE  
20 MARCH 2024

CATHERINE TRUMAN ARCHITECTS

- INVISIBLE FROM COMM AVE
- INVISIBLE FROM MARLBOROUGH ST
- INVISIBLE FROM PUBLIC ALLEY
- INVISIBLE FROM ALL



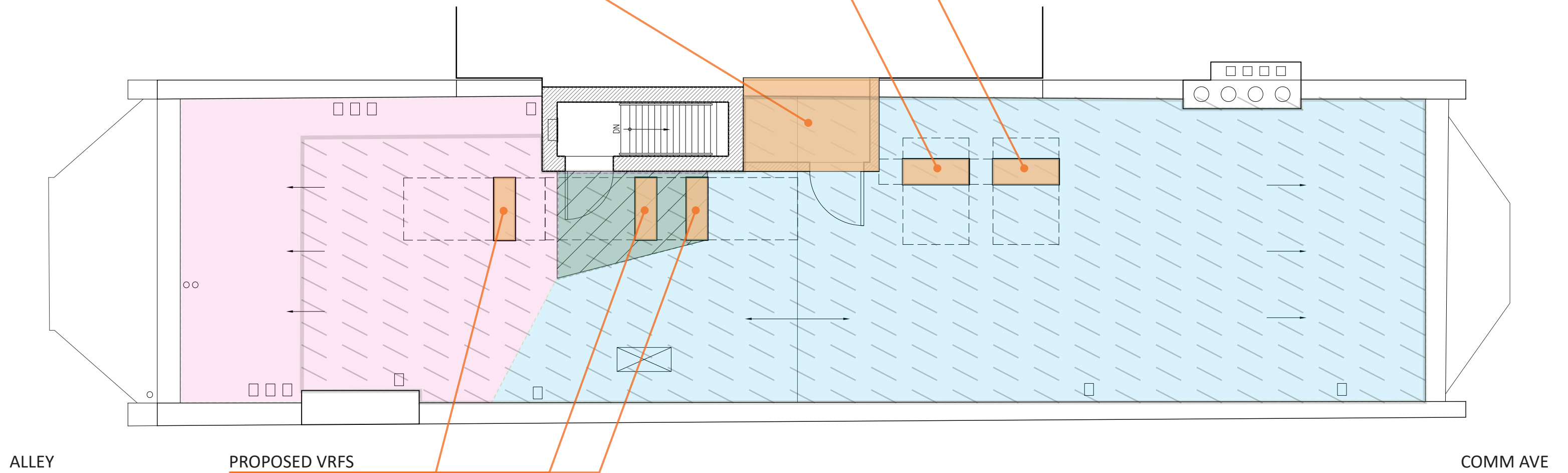
**SIGHT LINE ANALYSIS:  
COMBINED AREAS**

163 COMMONWEALTH AVE  
20 MARCH 2024

- INVISIBLE FROM COMM AVE
- INVISIBLE FROM MARLBOROUGH ST
- INVISIBLE FROM PUBLIC ALLEY
- INVISIBLE FROM ALL

PROPOSED BUFFER TANK ROOM (NOTE MOCK UP TO BE MODIFIED TO SHOW SLOPED ROOF WITH LOWER EAVE LINE)

PROPOSED CHILLERS



OPTION 1

163 COMMONWEALTH AVE  
20 MARCH 2024

CATHERINE TRUMAN ARCHITECTS



- INVISIBLE FROM COMM AVE
- INVISIBLE FROM MARLBOROUGH ST
- INVISIBLE FROM PUBLIC ALLEY
- INVISIBLE FROM ALL

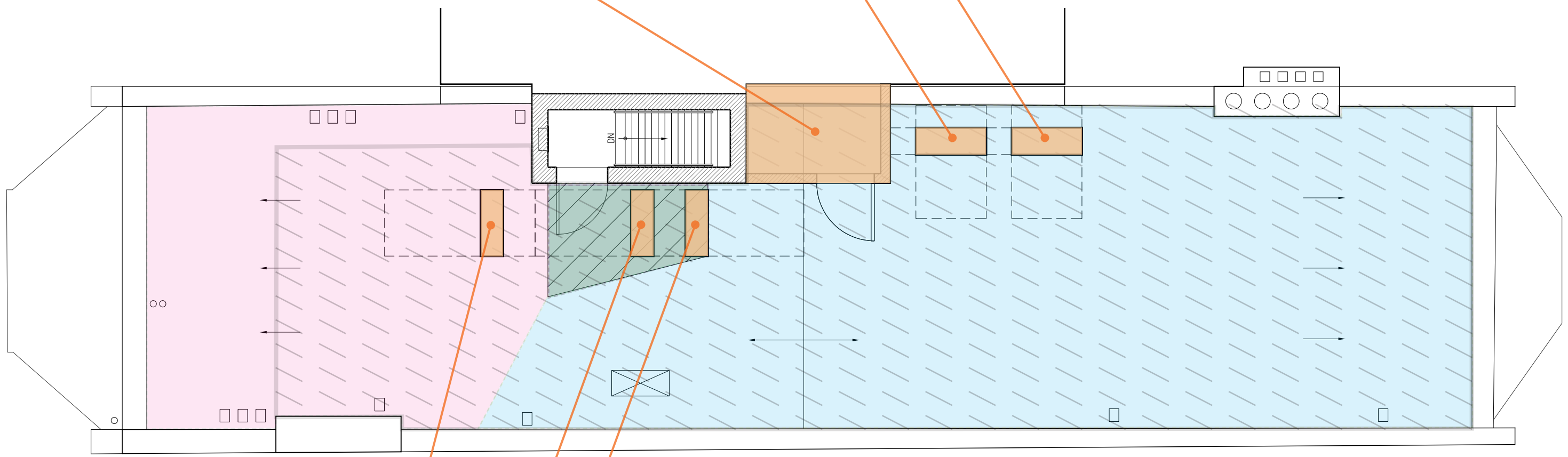
PROPOSED BUFFER TANK ROOM (NOTE MOCK UP TO BE MODIFIED TO SHOW SLOPED ROOF WITH LOWER EAVE LINE)

PROPOSED CHILLERS

PROPOSED VRFS

ALLEY

COMM AVE

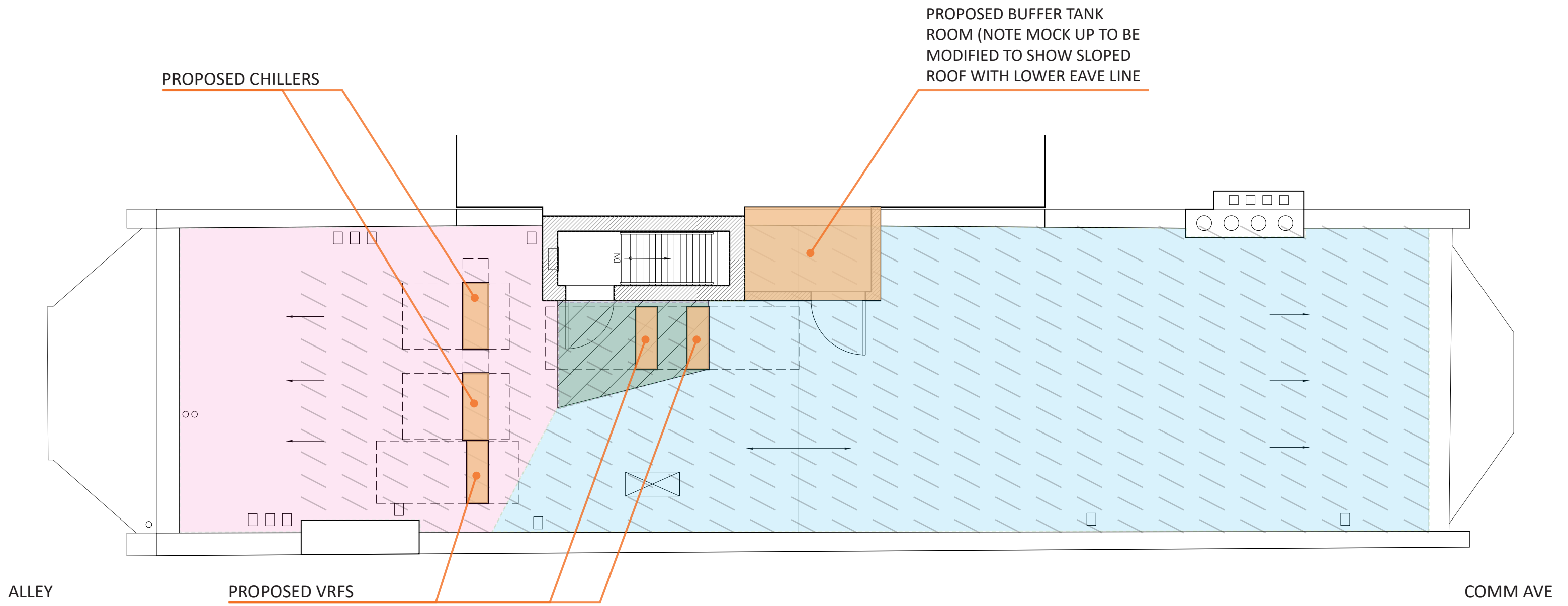


OPTION 2

163 COMMONWEALTH AVE  
20 MARCH 2024

CATHERINE TRUMAN ARCHITECTS

- INVISIBLE FROM COMM AVE
- INVISIBLE FROM MARLBOROUGH ST
- INVISIBLE FROM PUBLIC ALLEY
- INVISIBLE FROM ALL



**OPTION 3**

163 COMMONWEALTH AVE  
20 MARCH 2024

CATHERINE TRUMAN ARCHITECTS



PHOTOS WITH MOCK UP IN PLACE FROM ALLEY  
163 COMMONWEALTH AVE  
20 MARCH 2024  
CATHERINE TRUMAN ARCHITECTS



PHOTOS WITH MOCK UP IN PLACE FROM MARLBOROUGH STREET (OPTION 3)

163 COMMONWEALTH AVE  
20 MARCH 2024

CATHERINE TRUMAN ARCHITECTS



PHOTOS WITH MOCK UP IN PLACE FROM EXETER STREET (OPTION 1)

163 COMMONWEALTH AVE  
20 MARCH 2024

CATHERINE TRUMAN ARCHITECTS



PHOTOS WITH MOCK UP IN PLACE FROM COMM AVE (OPTION 1)

163 COMMONWEALTH AVE  
20 MARCH 2024

CATHERINE TRUMAN ARCHITECTS



PHOTOS WITH MOCK UP IN PLACE FROM COMM AVE (OPTION 1)

163 COMMONWEALTH AVE  
20 MARCH 2024

CATHERINE TRUMAN ARCHITECTS

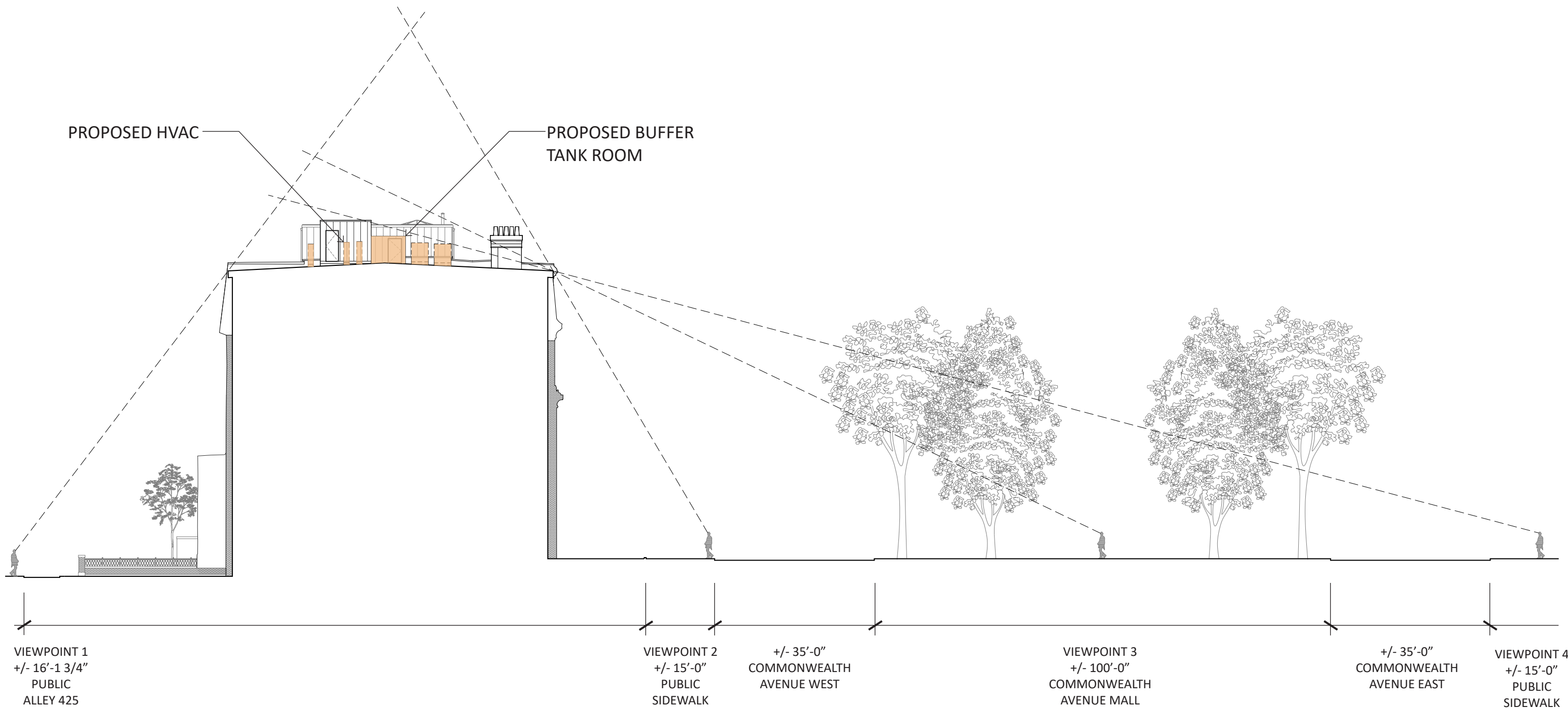


PHOTOS WITH MOCK UP IN PLACE FROM DARTMOUTH STREET (OPTION 1)

163 COMMONWEALTH AVE  
20 MARCH 2024

CATHERINE TRUMAN ARCHITECTS



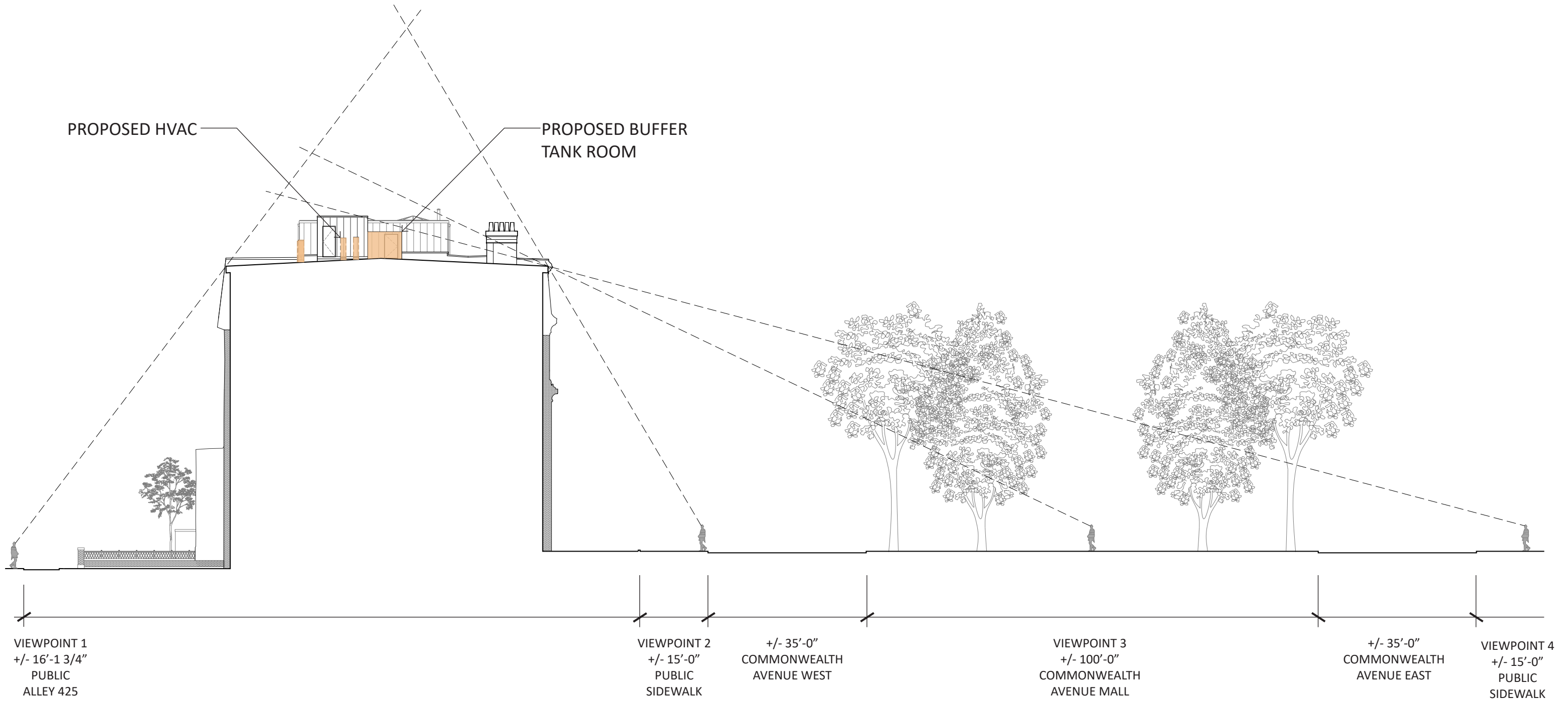


SIGHT LINES SECTION - COMMONWEALTH AVE TO PUBLIC ALLEY 425

SITE SECTION: OPTION 1 & 2  
(NEW UNITS IN EXISTING LOCATION)

163 COMMONWEALTH AVE  
20 MARCH 2024

CATHERINE TRUMAN ARCHITECTS

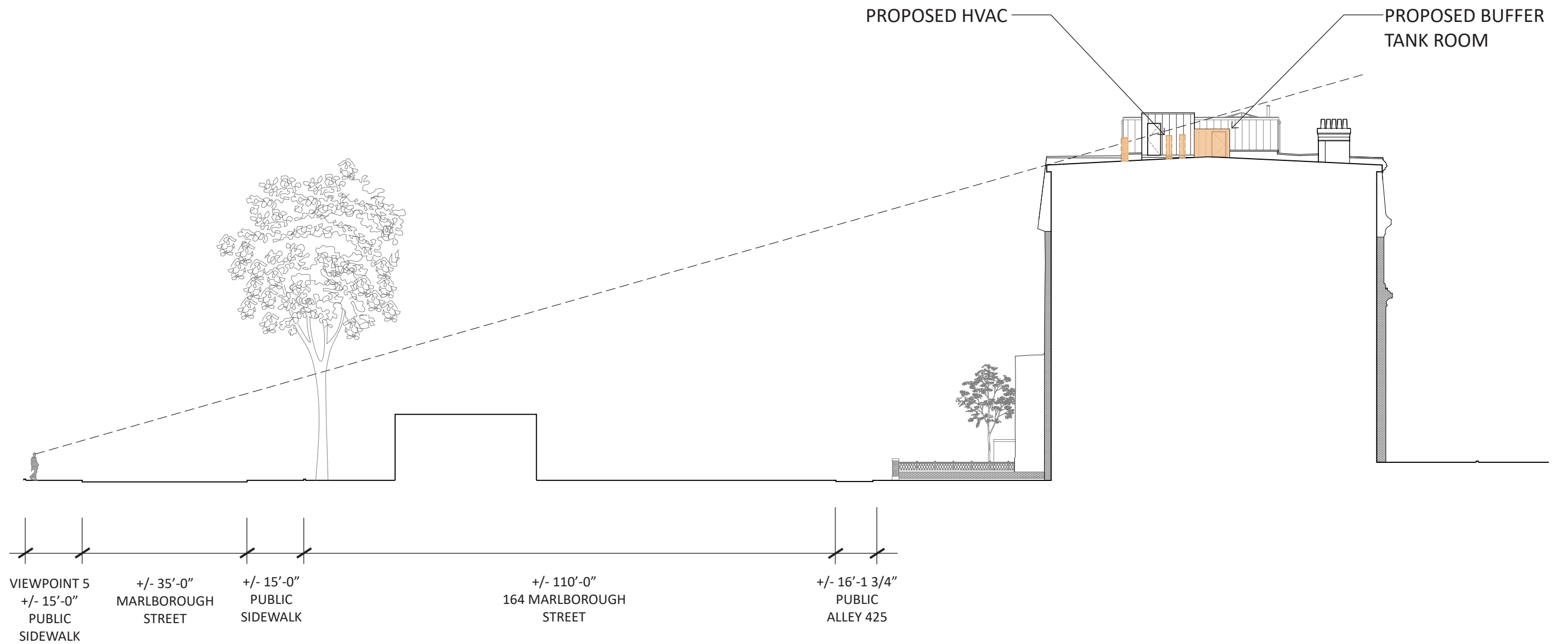


SIGHT LINES SECTION - COMMONWEALTH AVE TO PUBLIC ALLEY 425

SITE SECTION: OPTION 3

163 COMMONWEALTH AVE  
20 MARCH 2024

CATHERINE TRUMAN ARCHITECTS



**SIGHT LINES SECTION - MARLBOROUGH STREET TO 163 COMM AVE**