

# PG- PORTABLE GENERATOR PERMITS

---



NO GASOLINE  
GENERATORS!!!!!!

# WHY NO GASOLINE GENERATORS?

---

GASOLINE IS HIGHLY FLAMMABLE, AND A GENERATOR RUNNING FOR LONG PERIODS OF TIME MAKES THE UNIT EXTREMELY HOT, REFUELING OPERATIONS COULD RESULT IN A FLASH FIRE FROM SPILLAGE OF FUEL.



# DIESEL OF PROPANE FUELED GENERATORS ARE PERMITTED



# STATIONARY GENERATORS

---



- ALSO REQUIRES A PERMIT FROM ISD ELECTRICAL
- MUST BE PROPERLY GROUNDED
- MINIMUM 2A:20BC EXTINGUISHER REQUIRED
- MUST BE BARRICADED FROM PUBLIC (FENCE, JERSEY BARRIERS)
- EACH GENERATOR WILL REQUIRE ITS OWN PERMIT, UNLESS IDENTICAL GENERATORS (SAME MAKE, MODEL, WATTAGE)

# MOST COMMONLY USED GENERATORS

---

**DIESEL OR PROPANE FUELED**



## **FILE FOR BFD PORTABLE GENERATOR PERMIT**

1. SUBMIT SPEC SHEET OF GENERATOR
2. SUBMIT BASIC SITE OF GENERATOR LOCATION

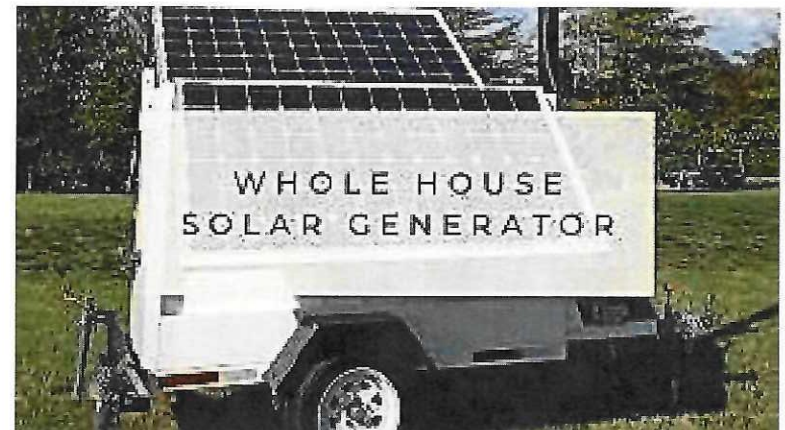


## **WHAT INSPECTOR'S WILL LOOK FOR?**

1. GENERATOR IS SAME MAKE AND MODEL THAT WAS SUBMITTED ON APPLICATION
2. YOU HAVE A MINIMUM 2A:20BC EXTINGUISHER ON SITE
3. GENERATOR IS BARRICADED FROM PUBLIC ACCESS

# SOLAR AND BATTERY POWERED GENERATORS

---



**NO PERMITS REQUIRED AT THIS TIME.**