



TADPOLE PLAYGROUND



Improvements to
Tadpole Playground



October 24th, 2023
Boston Parks and Recreation



MEETING RECORDING



The Boston Parks and Recreation Department will be recording the meeting and posting to our project webpage for those who are unable to attend the Zoom meeting live.

It is possible that participants may also be recording the meeting with their phones cameras or other devices. If you do not wish to be recorded during this meeting, please keep your microphone and camera off.

VIRTUAL MEETING ETIQUETTE

We want to ensure this conversation is a pleasant experience for all and that all community members/ stakeholders are comfortable sharing their comments, questions and feedback.

Please be respectful and mindful of each other's time when asking questions/ providing comments, so that all attendees are able to participate in the meeting.

Keep questions/ comments project-specific and not personal to yield solution-driven discussion.

Please wait until all attendees have had the opportunity to ask a question/ provide a comment before providing additional questions/ comments.

You can always set up a conversation with Nathan Frazee, Nathan.Frazee@boston.gov to further discuss the project or process.

ZOOM TIPS

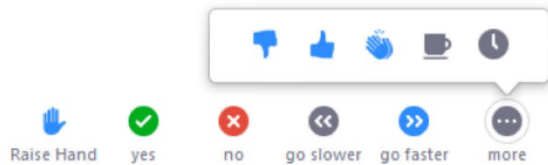
Here is how you can participate during the question and answer part of the presentation.

DURING THE PRESENTATION:



VIA WEB:

Turn video on / off.



To use these non-verbal options click on participants (bottom of screen); these options will pop up in side bar.

DURING THE Q&A:



JOINING VIA PHONE?

Use *9 to raise hand to ask for audio / video permission to ask questions or provide comments.



VIA WEB:

Chat to ask questions / comments or provide responses to poll questions



Raise hand to ask for audio / video permission to ask questions or provide comments.

AGENDA

1

PROJECT TEAM & BACKGROUND

Introductions
Play and Park Design
Goals and Objectives

2

SITE INVESTIGATION—PAST TO PRESENT

Site History
Site Analysis
Play Elements

3

WHAT WE'VE HEARD

4

DESIGN DEVELOPMENT

Master Plan Concept
Playground Inspiration

5

LISTENING & DISCUSSION

PROJECT TEAM

Nathan Frazee

Project Manager

Nathan.frazee@boston.gov

617-961-3167

Margaret Van Scoy

Neighborhood Liaison

margaret.vanscoy@boston.gov

617-635-2679

Rebecca McKeivitz

Director of Parks Care & Capital Projects

Friends of the Public Garden

rebecca@friendsofthepublicgarden.org

Cheri Ruane, FASLA, RLA

Practice Leader, Landscape
Architecture

Weston & Sampson

Cassie Bethoney, RLA

Project Manager

Weston & Sampson

Lindsey Abbott

Project Landscape Architect

Weston & Sampson

Rebecca Bagdigian-Boone

Landscape Designer

Weston & Sampson



PROJECT SCHEDULE & FUNDING





City of Boston
Priorities

Safety Guidelines+
Regulatory
Guidelines

**PARK
DESIGN**

Parks + Recreation
Goals

Community
Input

THE **5** ELEMENTS OF PLAY



SOCIAL/ EMOTIONAL

COOPERATION, DRAMATIC +
IMAGINATIVE PLAY



SEATING + TABLE AREAS,
THEMATIC PLAY ELEMENTS
(SHIPS), PLAY HOUSES

PHYSICAL

GROSS MOTOR/ FINE MOTOR SKILLS,
FLEXIBILITY, ACCESSIBILITY,
HEALTHY RISK + VARIETY



DISH SWINGS, MOVEABLE
OBJECTS, SWINGS, MONKEY
BARS, BALANCE

SENSORY

TOUCH, VISUAL, AUDITORY, SMELL
VESTIBULAR, PROPRIOCEPTIVE +
INTEROCEPTIVE



PUSH/ PULL ELEMENTS
WATER ELEMENTS, VARIED
TEXTURES + COLORS, SPINNING,
MOVEABLE OBJECTS, ROCKING

COGNITIVE

CREATIVITY, SENSE OF
ACCOMPLISHMENT, PROBLEM-
SOLVING, CAUSE + EFFECT, RISK
ASSESSMENT



INTERACTIVE WATER
ELEMENTS, ROPE CLIMBER,
LINKED PLAY ELEMENTS

COMMUNICATION

DEVELOPMENT OF RECEPTIVE +
EXPRESSIVE LANGUAGE



TALK TUBES, SLIDES, THEMATIC
PLAY ELEMENTS, TRIKE TRACK,
SEE SAWS

BOSTON COMMON MASTER PLAN GOALS AND OBJECTIVES

- Support and sustain multi-functional park for the full diversity of users
- Strengthen the park's natural, historic, cultural, and visual landscape character
- Expand amenities to support park visitors
- Improve safety, maintenance, and management of the Common
- Improve the natural and physical infrastructure of the Common for quality and resilience



TADPOLE PLAYGROUND GOALS AND OBJECTIVES

Create accessible entrances

(along Brimmer Path and between Brimmer and the existing entrance).

Add more and better site amenities - stroller parking areas, seating, etc.

Create **new and different types of play**, **new accessible connections** and **more playground amenities** by **expanding the playground's footprint**. **Protect what makes Tadpole Playground great!**

Incorporate a vending spot just outside the playground.

Introduce new play equipment that expands play value and entices a wide variety of age groups to play.

Protect the trees, especially the tree inside the playground!

Build play value into the panel's natural topography.

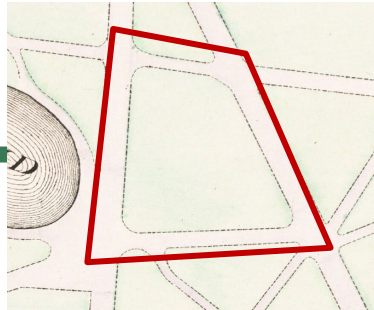
SITE HISTORY

6000-3000 BP

Indigenous people lived seasonally on the lands of the Common

1634

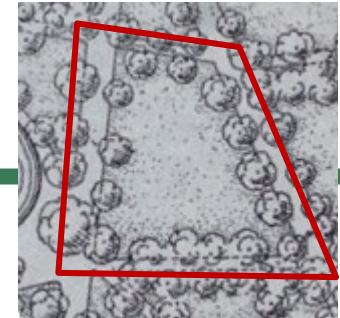
Boston Common officially established



1888



1901

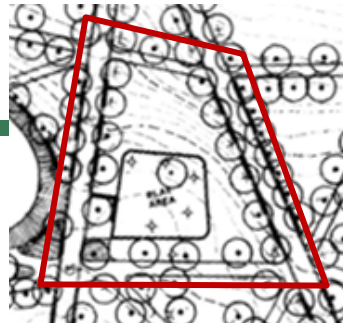


1925



1934

1970s
Wooden playground built



1970

1977
Common designated a Boston Landmark

1987
Common listed as National Historic Landmark

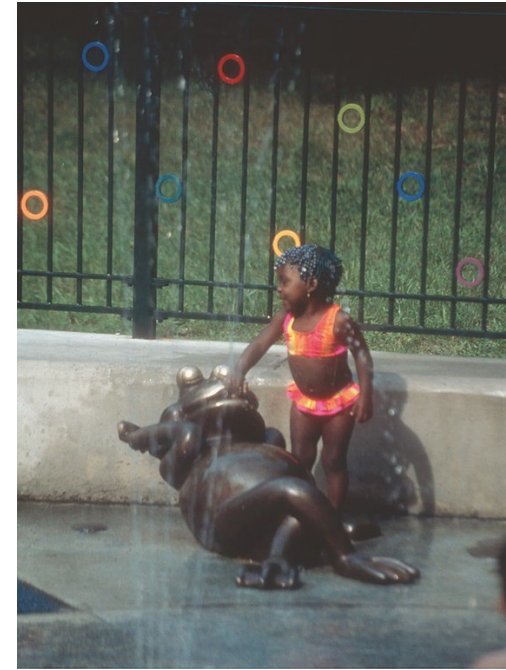


1990

1990
Play area equipment replaced

2002
Playground renovated with addition of frog sculptures

2002 PLAYGROUND RENOVATION



Photos by Lynn Wolff and John Copley, 2002

COMMENTS FROM MASTER PLAN

Planting and Aesthetics

Play Value

Park Amenities



The large trees will be protected and incorporated into the new design.



“Fix the pavement”



Backpack and stroller storage take up a lot of space



Introduce more accessible play options



“We want swings!”

COMMENTS FROM MASTER PLAN

Planting and
Aesthetics

Play Value

Park Amenities



"More trees!"



"More benches—
shade and
reading spots"



"Kind of empty—needs
more trees, more diverse
plants"

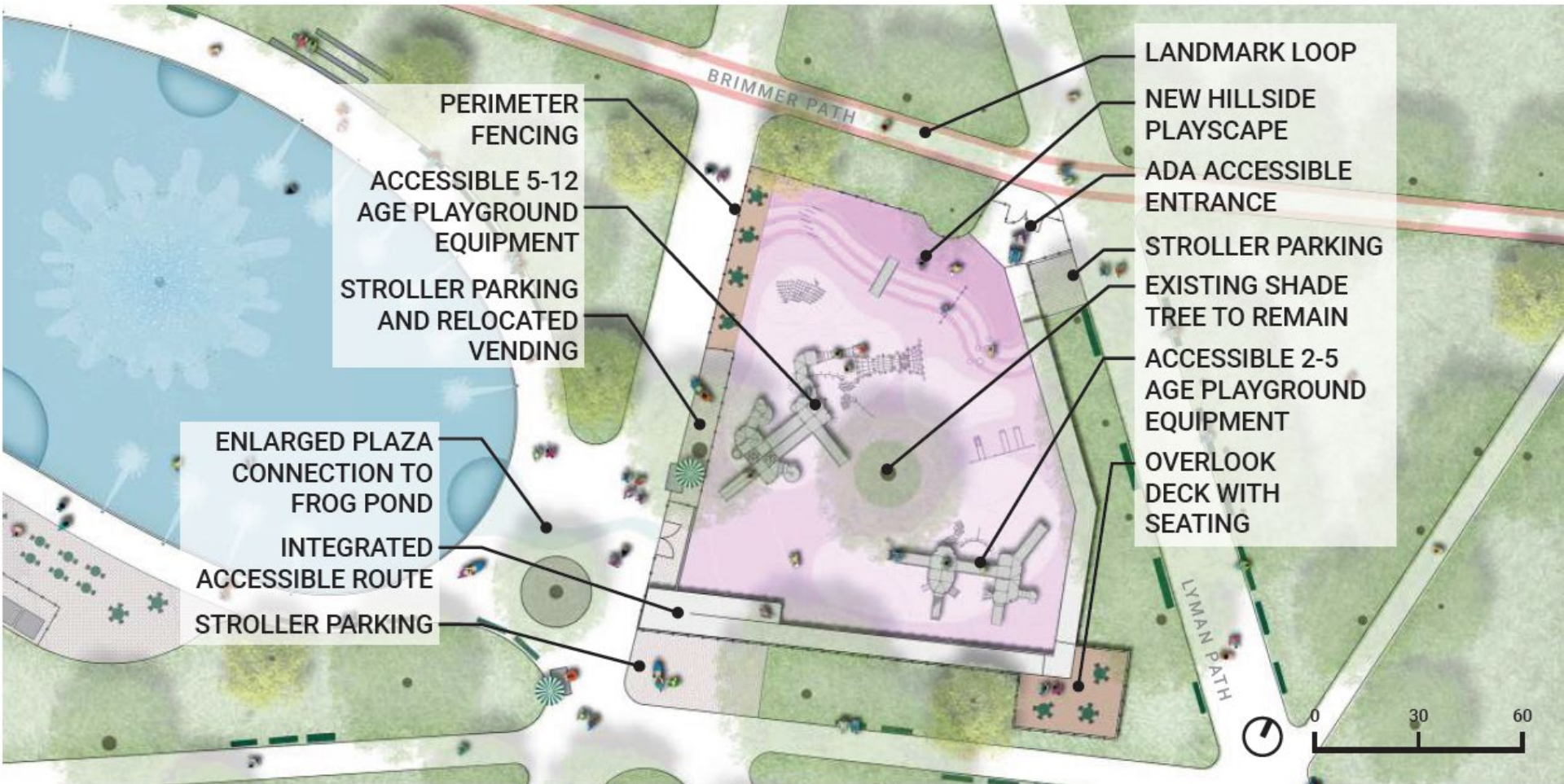
"Expand the children's
playground"



"Want an area for parents
in the playground"



MASTER PLAN CONCEPT



SITE ANALYSIS – SUN STUDY

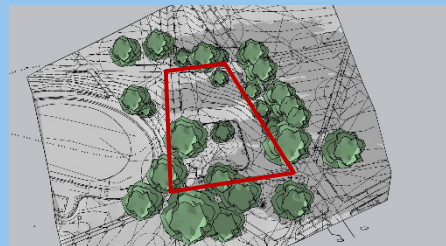
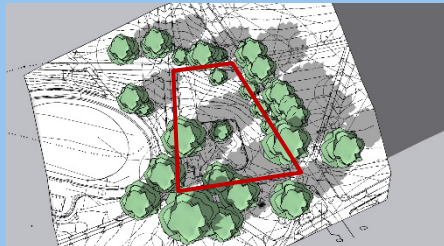
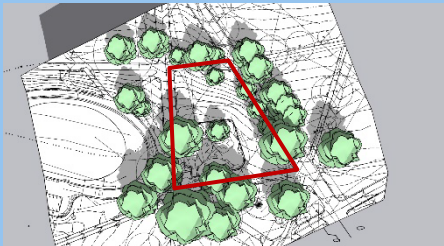
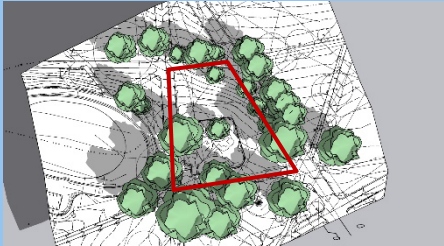
9 AM

11 AM

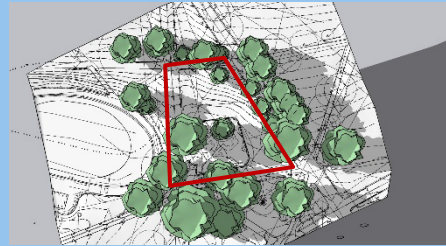
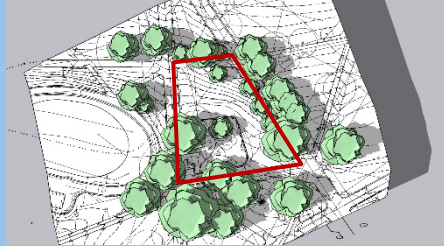
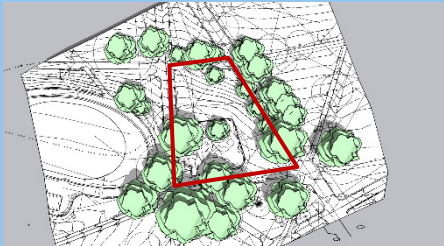
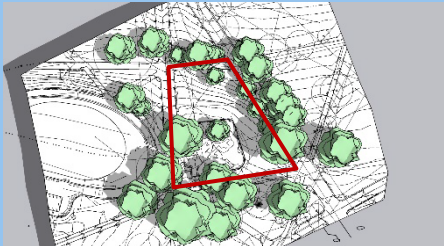
3 PM

5 PM

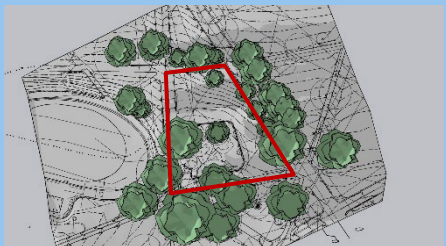
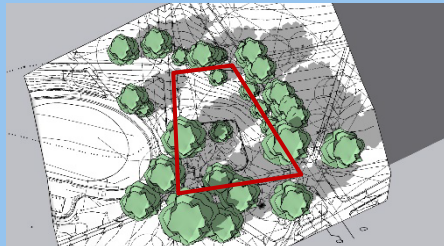
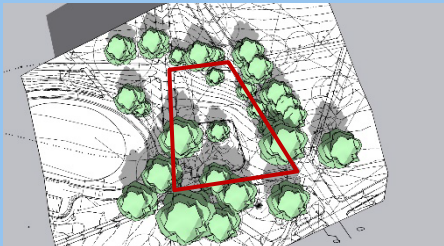
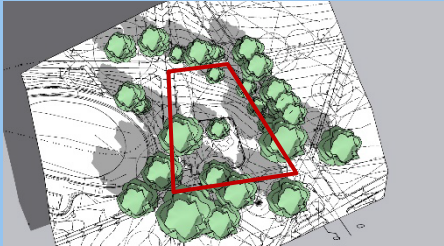
SPRING



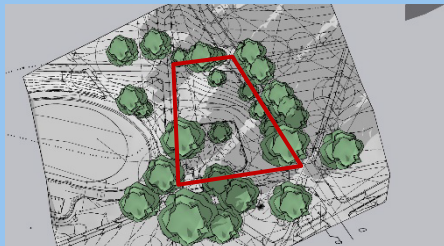
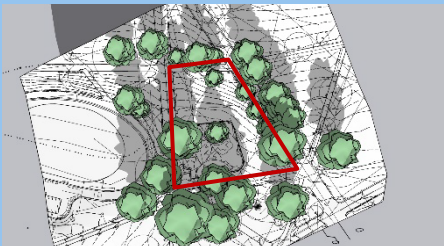
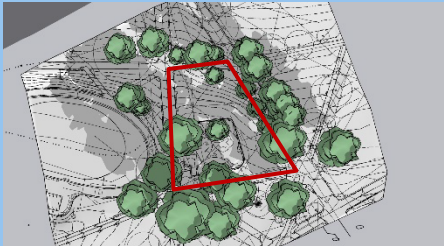
SUMMER



FALL



WINTER

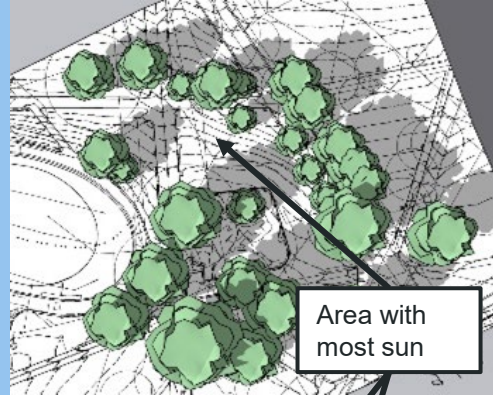
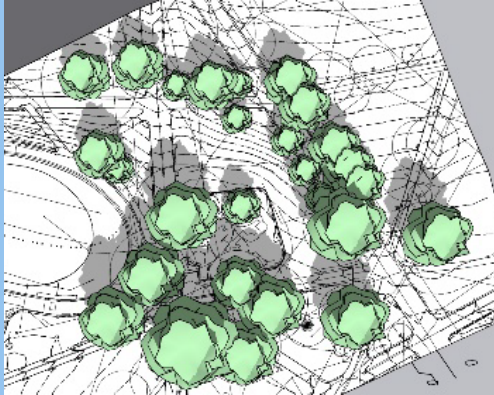


SITE ANALYSIS – SUN STUDY

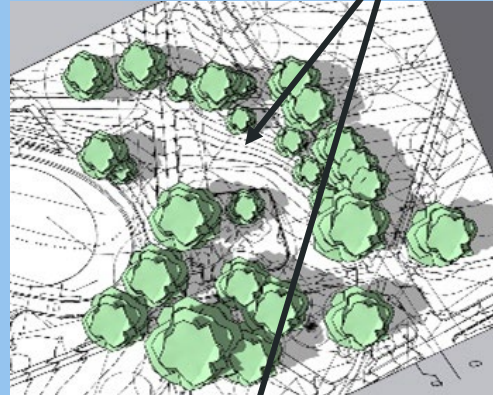
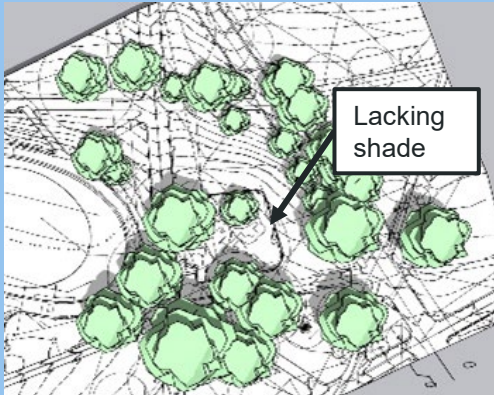
11 AM

3 PM

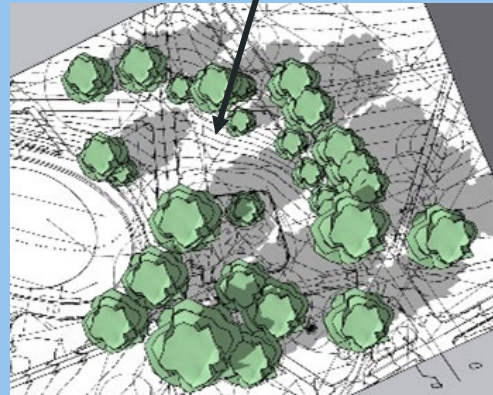
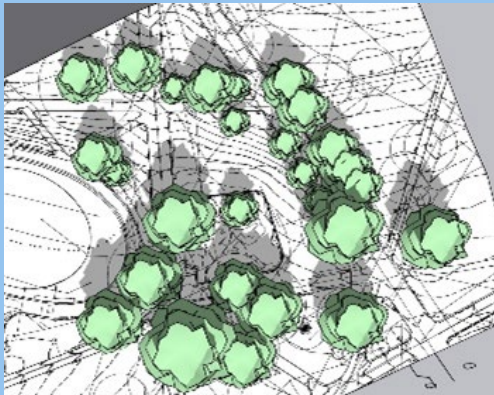
SPRING



SUMMER

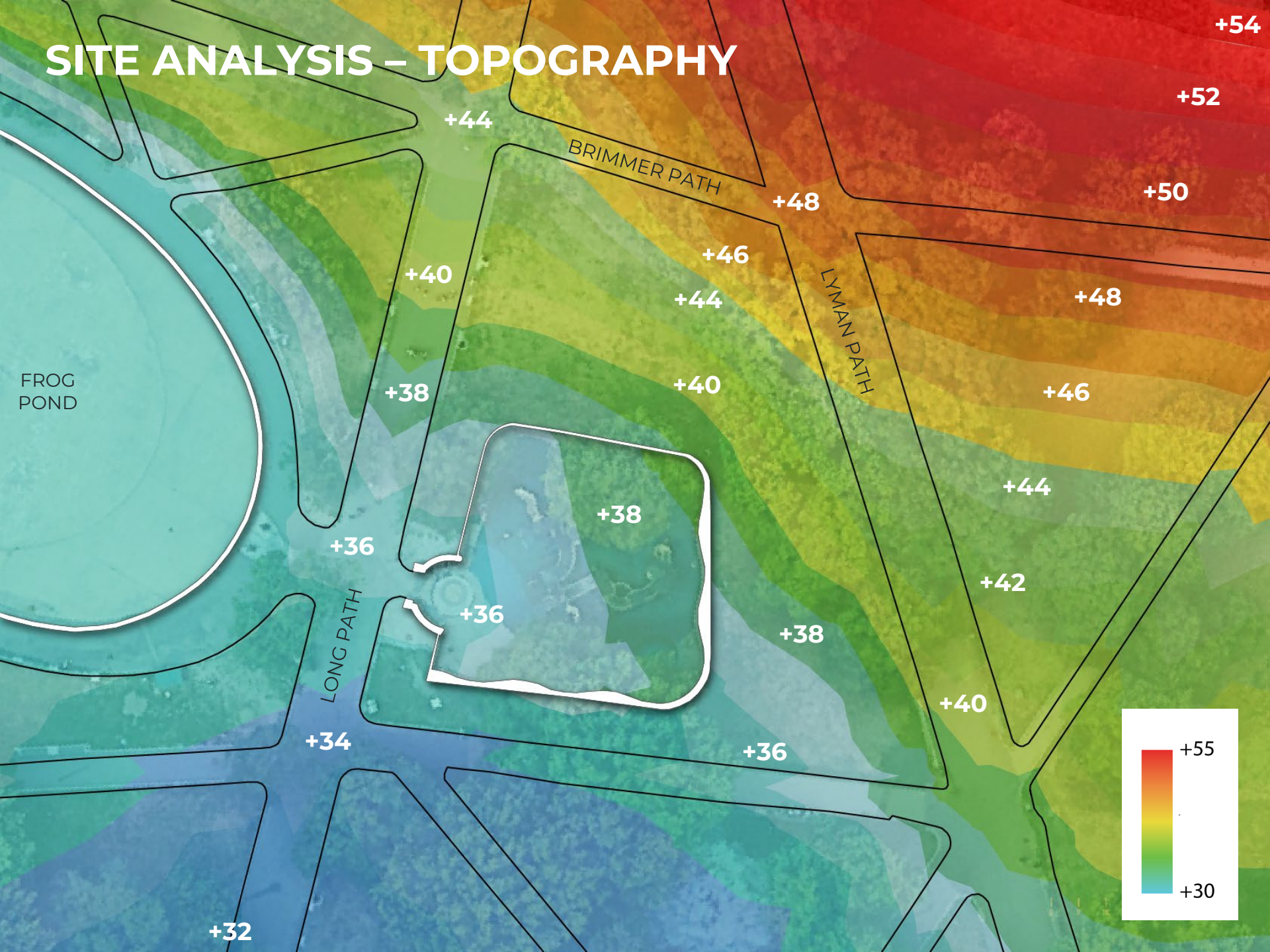


FALL

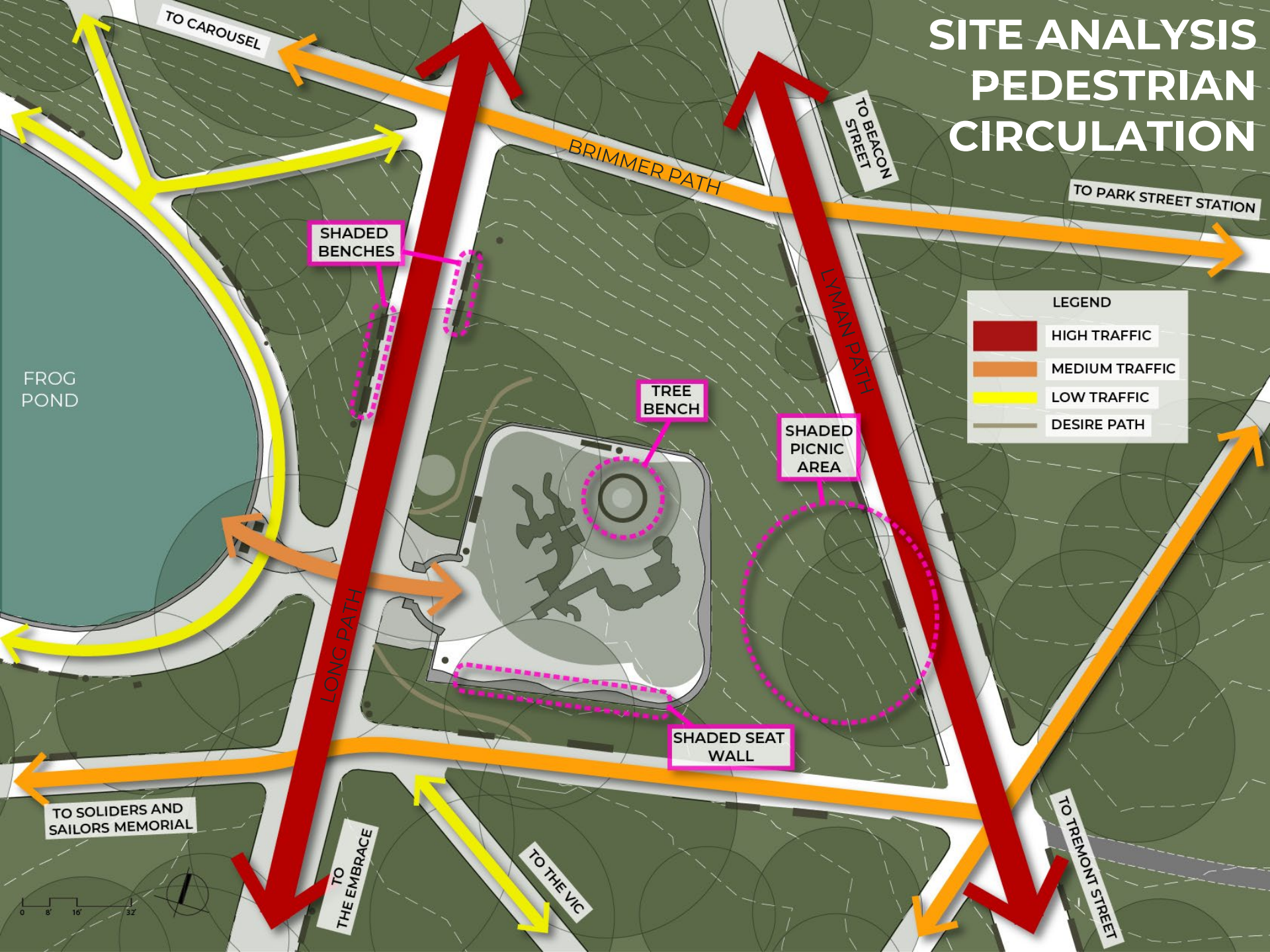


- Dappled sun/shade during high use times
- Hillside area receives most sun throughout the day
- Play area lacking shade during summer mornings

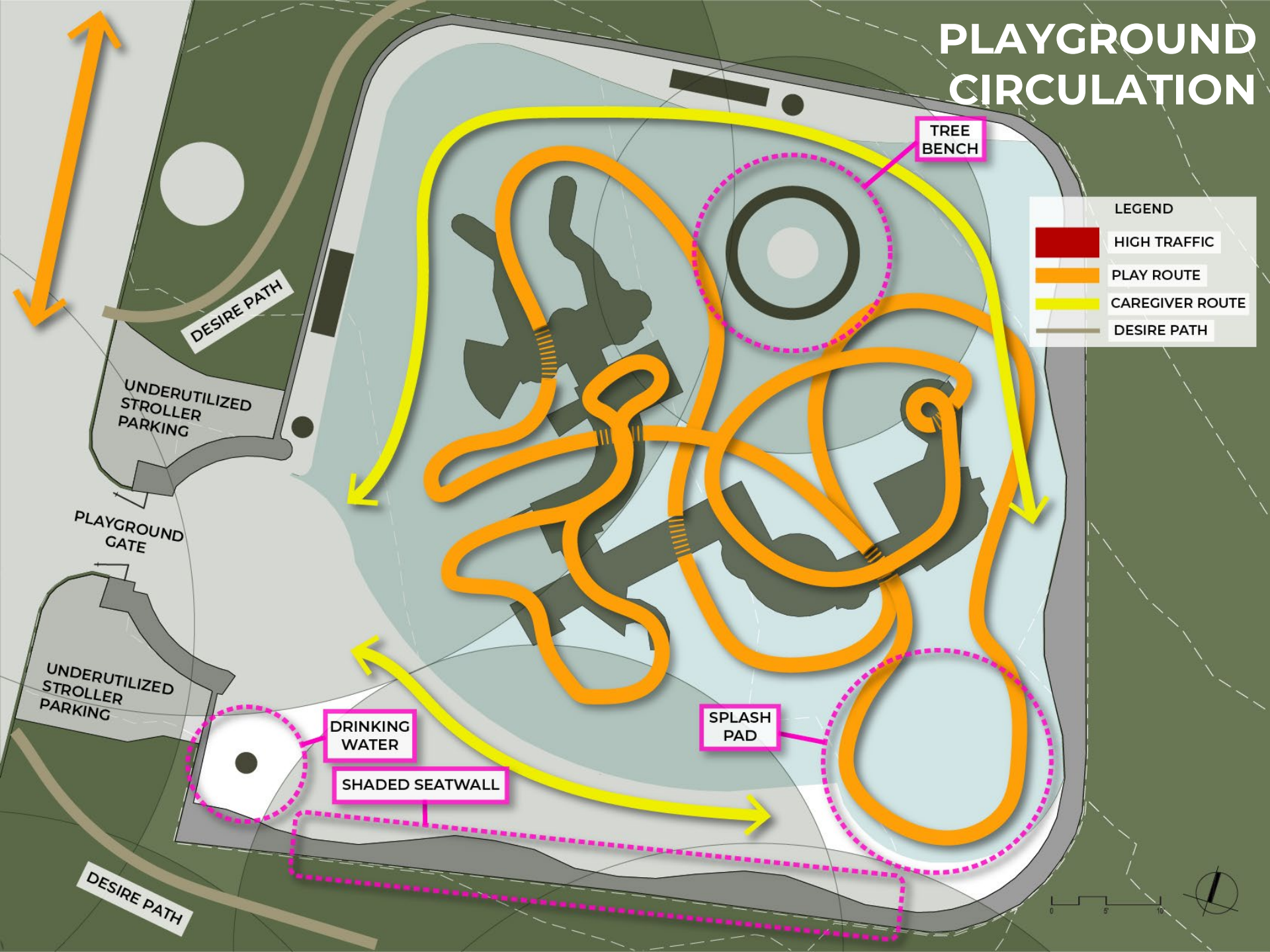
SITE ANALYSIS – TOPOGRAPHY



SITE ANALYSIS PEDESTRIAN CIRCULATION



PLAYGROUND CIRCULATION



LEGEND

- █ HIGH TRAFFIC
- █ PLAY ROUTE
- █ CAREGIVER ROUTE
- █ DESIRE PATH

TREE BENCH

SPLASH PAD

DRINKING WATER

SHADED SEATWALL

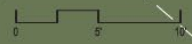
DESIRE PATH

UNDERUTILIZED STROLLER PARKING

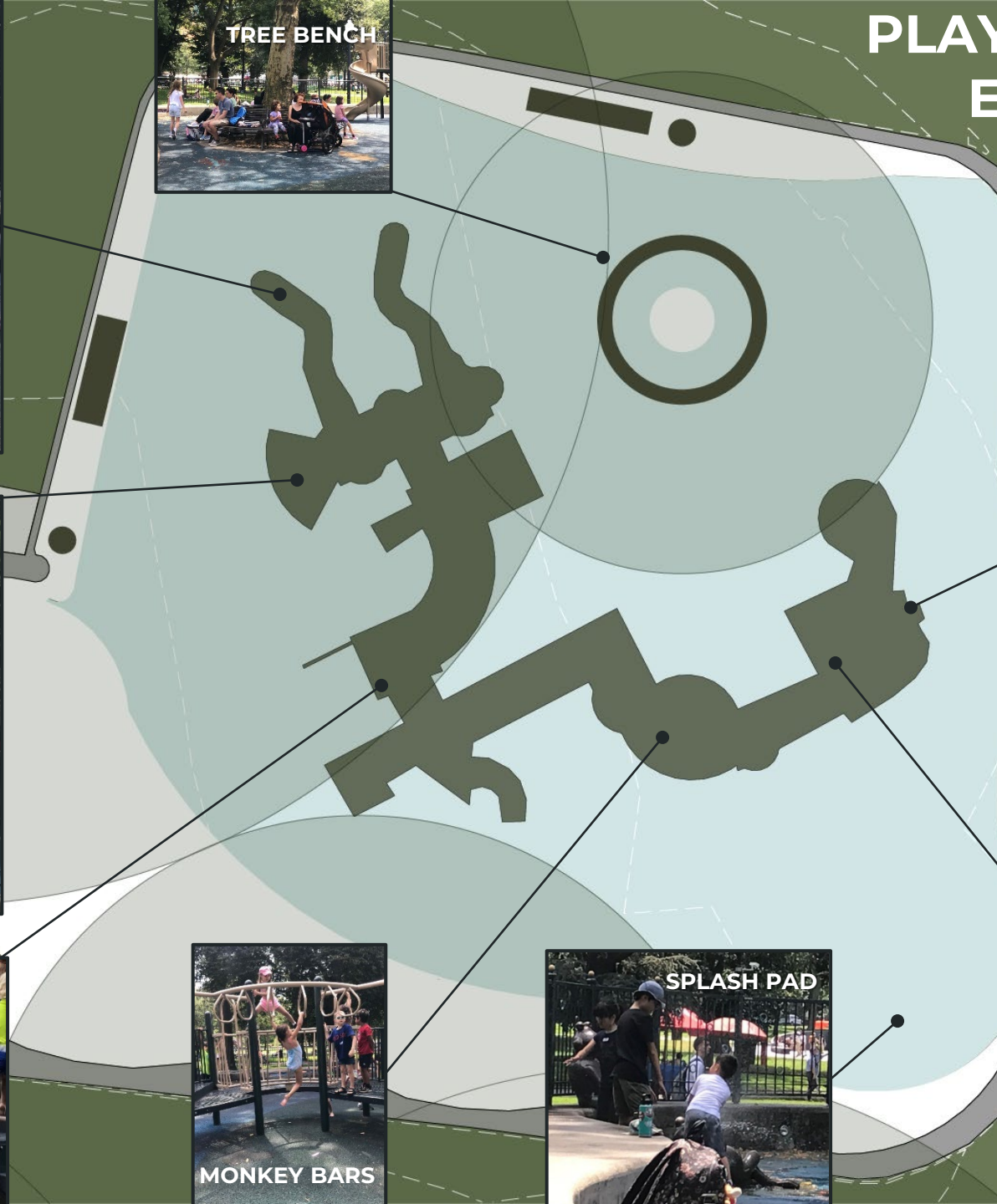
PLAYGROUND GATE

UNDERUTILIZED STROLLER PARKING

DESIRE PATH



PLAYGROUND ELEMENTS



VESTIBULAR PLAY ELEMENTS

IMAGINATION



SENSORY



SLIDING



CLIMBING



ROCKING AND BALANCE



VESTIBULAR PLAY ELEMENTS



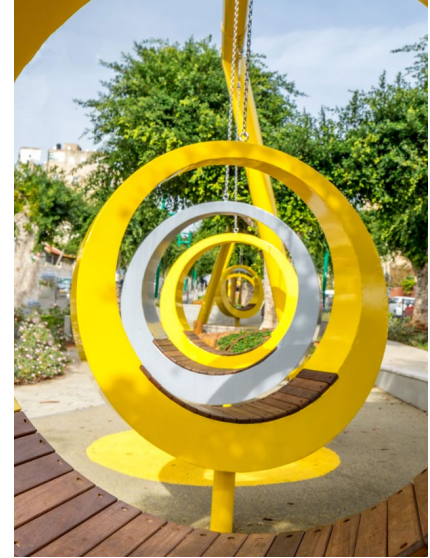
What ways do you wish you could play at Tadpole Playground?

- a) Swinging!
- b) Sliding!
- c) Spinning!
- d) Climbing!
- e) Pretending!
- f) Learning history!
- g) Here's my own idea: _____



Please share your response in the chat!

PLAYGROUND INSPIRATION – COLOR



PLAYGROUND INSPIRATION – SCALE



"The Embrace"
Boston, MA



Soldiers and Sailors Monument
Boston, MA



Maggie Daley Park
Chicago, IL



River Park
Breckenridge, CO

PLAYGROUND INSPIRATION – MATERIALS AND TEXTURE

Granite Block



Martin's Park
Boston, MA

Netting



Tumbling Bay Playground
London, UK

Wood



Waterloo Park
Austin, TX

Wood Pavers



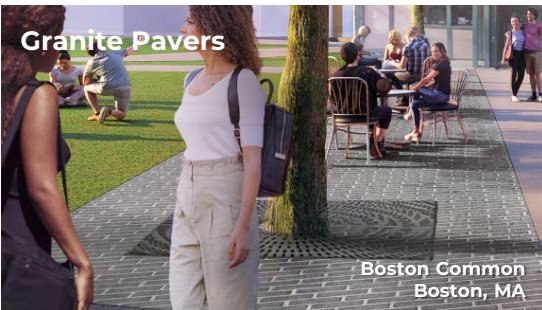
Hashomrim Park
Kiryat Tiv'on, IL

Planting



Lincoln Park
Somerville, MA

Granite Pavers



Boston Common
Boston, MA

PLAYGROUND INSPIRATION – MOUNDS AND LANDFORM



Glazer Family Playground
St. Petersburg, FL



Tophane Park Playground
Istanbul, TR



Wave Field
Ann Arbor, MI



Dahua Majek Kindergarten
Shanghai, CN



Brooklyn Bridge Park
Brooklyn, NY



Hanafan River's Edge Park
Council Bluffs, IA

PLAYGROUND INSPIRATION – HISTORY



Sunset Heritage Precinct
Dalkeith, AU



Montshire Museum of Science
Norwich, VT



Creekside Commons Park,
Chelsea, MA

What sort of playground would inspire you most?



- a) One with lots of **color!**
- b) One that is **BIG** and **TALL!**
- c) One with **smaller play moments!**
- d) One with lots of **open space** so I can play tag!
- e) A place with play **mounds for sliding!**
- f) One with places I can play **pretend!**
- g) I'd like **lots of textures** like wood, stone, and rope!
- h) One where I can play and learn about **local history!**

Please share your response in the chat!



LISTENING & DISCUSSION

Help us build great parks.
Let us know what matters to you.



THANK YOU!

Meeting #2 TBD

For questions, maintenance requests or concerns regarding any of our parks contact 311

BOS:
311



October 24th, 2023
Boston Parks and Recreation

