

A photograph of the Quincy Street Play Area, featuring a playground with blue equipment, picnic tables, and trees. The image is overlaid with a blue tint.

# *Improvements to* **QUINCY STREET PLAY AREA**



# ZOOM INTERPRETATION SERVICES

**English:** For interpretation in [\_\_\_\_],

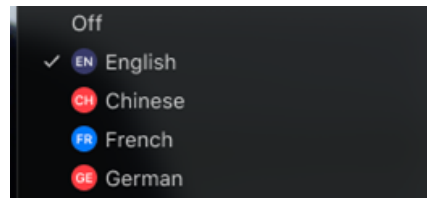
1. Go to the horizontal control bar at the bottom of your screen. Click on “Interpretation.”
2. Then click on the language that you would like to hear.
3. You are now accessing this meeting in [\_\_\_\_]

**Spanish:** Para traducción en Español,

1. Vaya a la parte baja de la pantalla, en la barra horizontal, y presione la tecla “Interpretation”.
2. Luego seleccione el idioma que desea escuchar.
3. Después de seleccionar, usted entrará a la reunión en el idioma “Español”.

**Haitian Creole:** Pou entèpretasyon Kreyòl ayisyen,

1. Ale nan kontwòl ba nan pati anba ekran an epi Klike sou "Interpretation"
2. Apre sa, klike sou lang ke ou ta renmen tande a.
3. Kounye a ou gen aksè a reyinyon an Kreyòl ayisyen



# MEETING RECORDING



*The Boston Parks and Recreation Department will be recording the meeting and posting to our project webpage for those who are unable to attend the Zoom meeting live.*

*It is possible that participants may also be recording the meeting with their phones cameras or other devices. If you do not wish to be recorded during this meeting, please keep your microphone muted and camera off.*

*Please share with your neighbors and friends,  
**[boston.gov/quincy-street-play](https://boston.gov/quincy-street-play)***

# VIRTUAL MEETING ETIQUETTE

*We want to ensure this conversation is a pleasant experience for all and that all community members/stakeholders are comfortable sharing their comments, questions and feedback.*

*Please be respectful and mindful of each other's time when asking questions/ providing comments, so that all attendees are able to participate in the meeting.*

*Keep questions/ comments project-specific and not personal to yield solution-driven discussion.*

*Please wait until all attendees have had the opportunity to ask a question/ provide a comment before providing additional questions/ comments.*

*You can always set up a conversation with **Max Sell**, [max.sell@Boston.gov](mailto:max.sell@Boston.gov) , to further discuss the project or process.*

# ZOOM TIPS

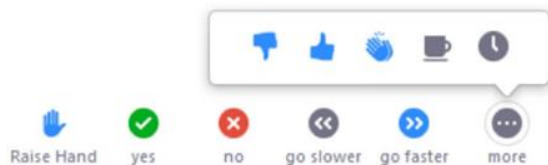
Here is how you can participate during the question and answer part of the presentation.

## DURING THE PRESENTATION:



### VIA WEB:

Turn video on / off.



To use these non-verbal options click on participants (bottom of screen); these options will pop up in side bar.

## DURING THE Q&A:



### JOINING VIA PHONE?

Use \*9 to raise hand to ask for audio / video permission to ask questions or provide comments.



### VIA WEB:

Chat to ask questions / comments or provide responses to poll questions



Raise hand to ask for audio / video permission to ask questions or provide comments.

# AGENDA

---

1

**PROJECT TEAM INTRODUCTION**

2

**PROJECT OVERVIEW**

3

**PRESENTATION**

4

**LISTENING & DISCUSSION**

5

**CLOSING REMARKS & NEXT STEPS**

# PROJECT TEAM

---

## **MAX SELL**

PROJECT MANAGER

[max.sell@boston.gov](mailto:max.sell@boston.gov) or 617-961-3097

## **My'Kel McMillen**

Outreach Coordinator

[Corey.mcmillen@boston.gov](mailto:Corey.mcmillen@boston.gov) or 617-201-1294

## **Asha Janay**

Roxbury Neighborhood Services Liaison

[Asha.Janay@boston.gov](mailto:Asha.Janay@boston.gov) or 617-635-3296

## **David Warner**

Principal, Warner Larson now IMEG

## **Sameer Bhoite**

Design Director, Warner Larson now IMEG

## **Yiling Wang**

Landscape Designer, Warner Larson now IMEG



# PROJECT OVERVIEW

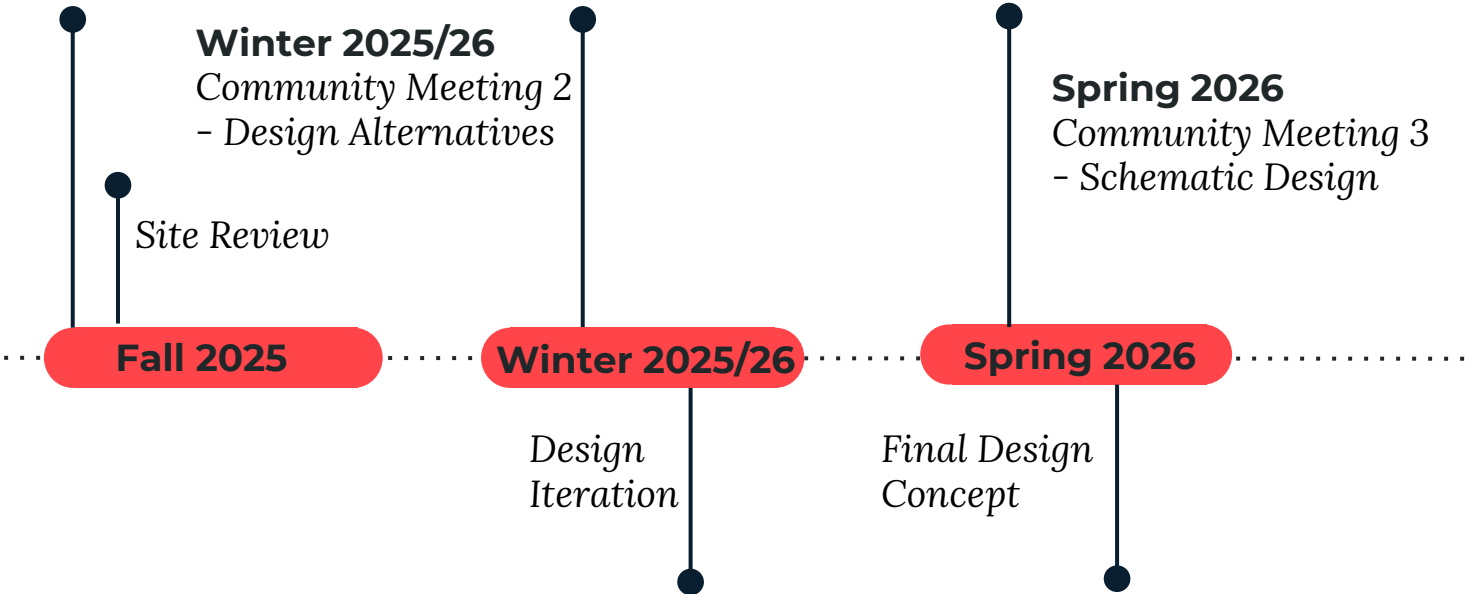
A blue-tinted photograph of a park. In the foreground, there's a stone wall and a paved walkway. To the right, a playground with blue and grey equipment is visible. In the center, there are several picnic tables and a black lamppost. The background is filled with lush green trees under a cloudy sky. The text "PROJECT OVERVIEW" is overlaid in white, bold, sans-serif font on the left side of the image.

# PROJECT SCHEDULE & FUNDING

---

## Early Fall 2025

Community Meeting 1  
- Site Analysis





# CITY OF BOSTON PRIORITIES

---

- **Expanding walkable access to parks**
- **Green and Growing**
- **Climate resilience**
- **Healthy and Safe**
- **Housing and Community Building**



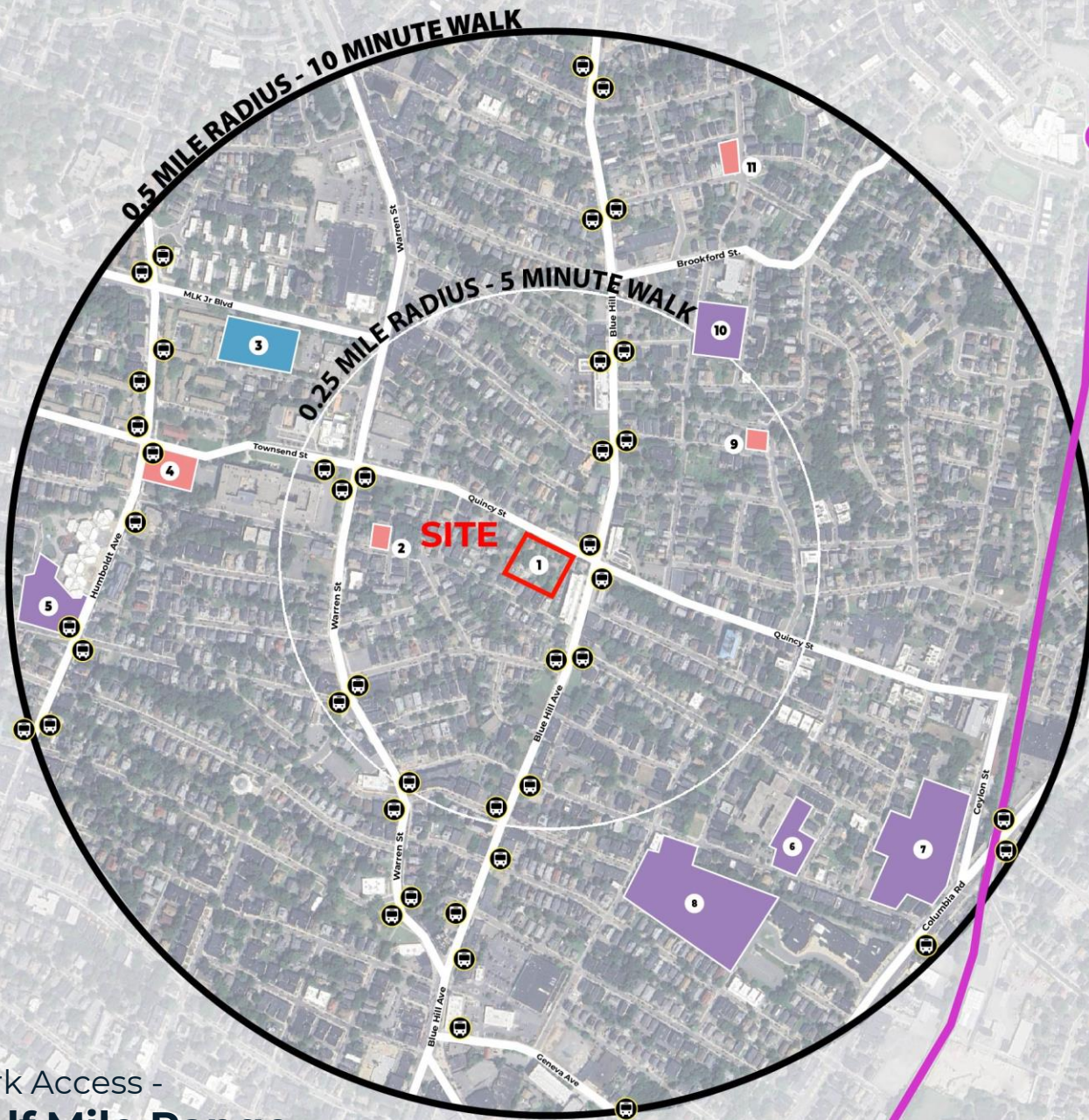
# PARK & RECREATION GOALS

---

- Accessible and available to all
- Diverse, balanced, and efficient mix of uses
- Meaningful and inclusive community engagement
- Adaptive and resilient landscapes
- Promote connections



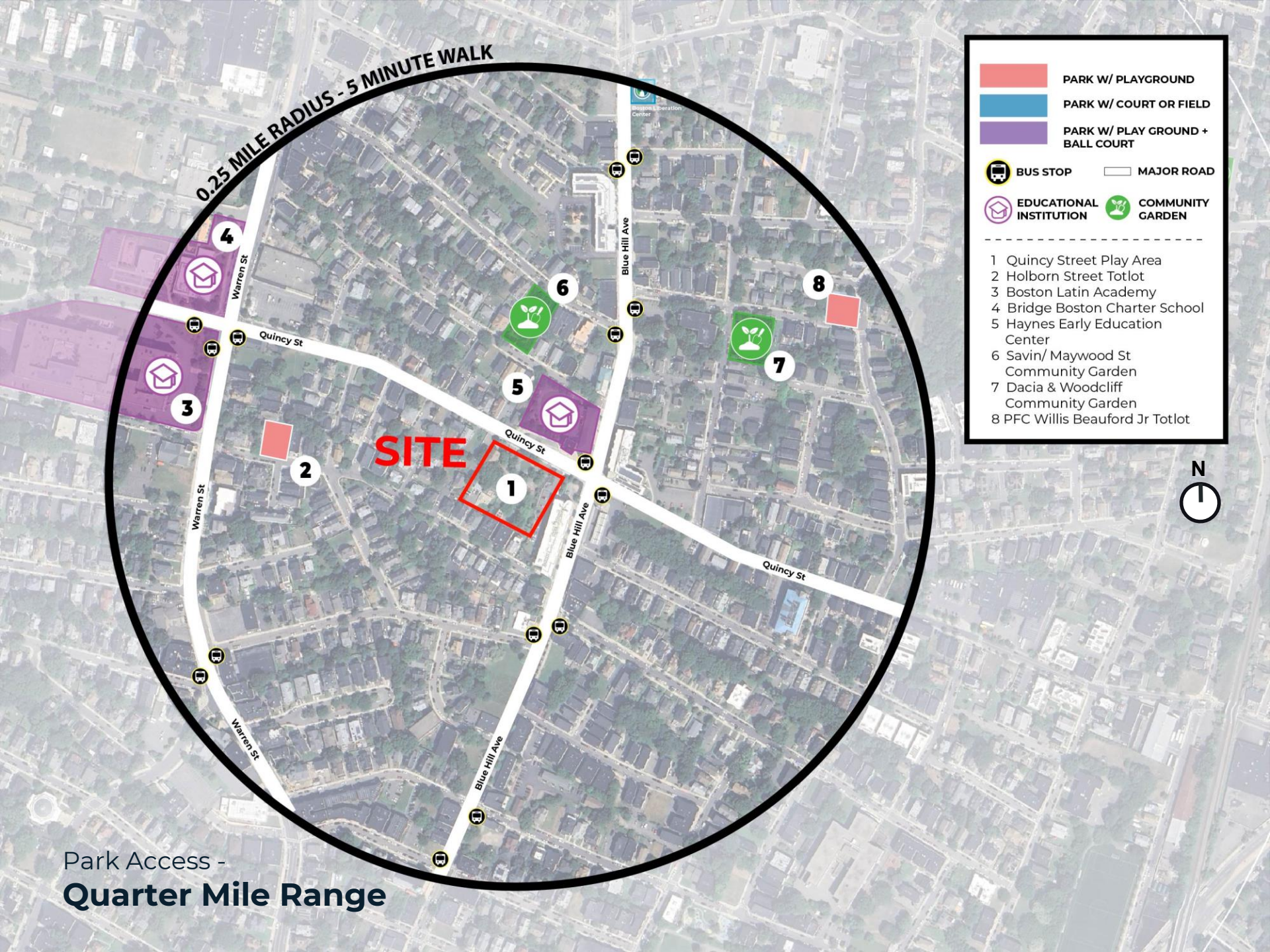
## Park Access - Half Mile Range



- PARK W/ PLAYGROUND
- PARK W/ COURT OR FIELD
- PARK W/ PLAY GROUND + BALL COURT
- BUS BUS STOP
- COM COMMUTER RAIL STOP
- MAJOR ROAD
- COMMUTER RAIL

- 1 Quincy Street Play Area
- 2 Holborn Street Totlot
- 3 Roxbury Stadium
- 4 Laviscount Park
- 5 Trotter School Playground
- 6 King School Park
- 7 Ceylon Park
- 8 Brunswick-King Play Area & Park
- 9 PFC Willis Beauford Jr Totlot
- 10 John Winthrop Playground
- 11 Julian Judson Gayland Play ground





Park Access -  
**Quarter Mile Range**



View from Blue Hill Ave – Site is invisible



View from parking lot of the Clarion Apartment



Connection with education institute across Quincy street


Existing Condition -  
**Neighborhood connection**


The Clarion  
Apartment

**A** PICNIC AREA

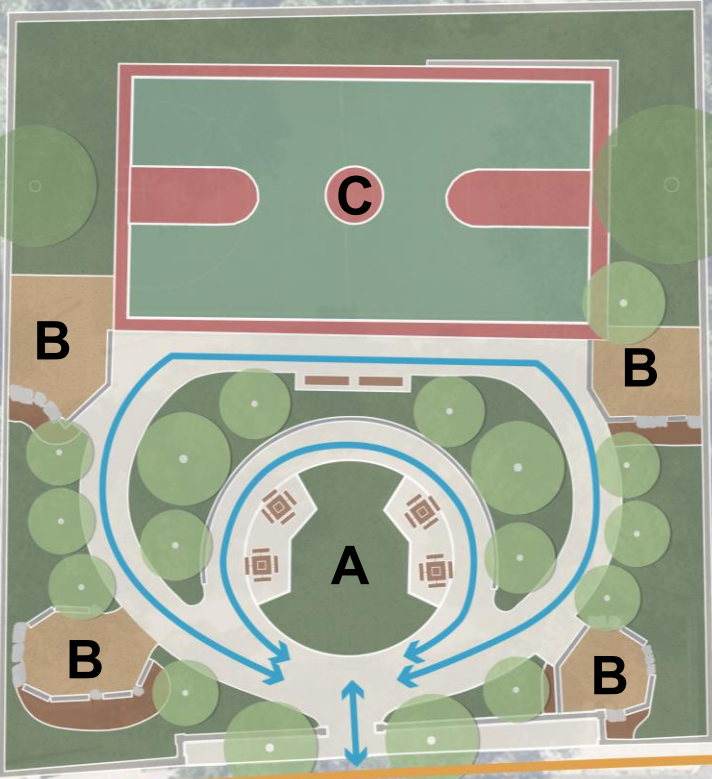
**B** FITNESS

**C** BASKETBALL COURT

 PEDESTRIAN PATH

 SIDEWALK

Blue Hill Ave



QUINCY ST

Site Conditions





Entrance wall



Retaining wall and fence



Existing Condition -  
**Retaining Wall/Fencing**



Existing Condition -  
**Outdoor Fitness Equipment**



● Drinking Fountain  
Total of 1



— Seat Wall



● Picnic chess table  
Total of 4

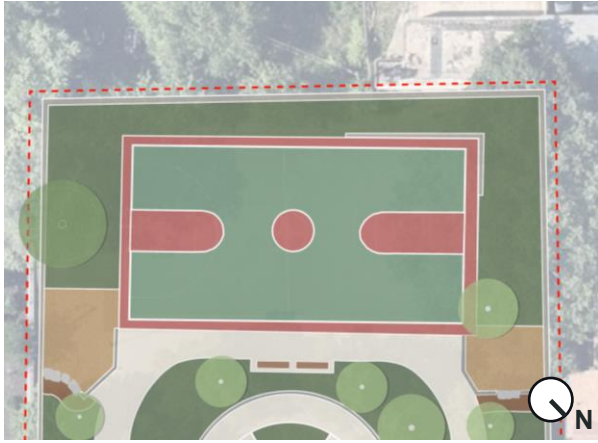


● Bench  
Total of 2



● Trash Can  
Total of 2

## Existing Condition - **Site Amenities**



Court Surfacing Condition



Sports Lighting



Retaining Wall at Court

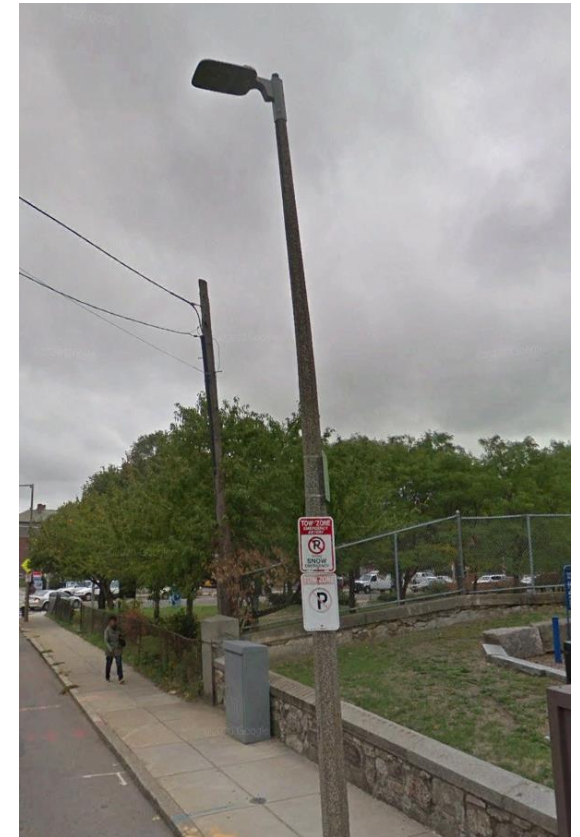


Bench looking towards Court

## Existing Condition - **Basketball court**



● Park pedestrian lighting  
Total of 6



● Street lighting

## Existing Condition – **Pedestrian Lighting**



- Accolade Elm
- Japanese Pagoda Tree
- Silver Maple
- Tulip Tree

Existing Condition -  
**Tree inventory**

# LISTENING & DISCUSSION

Help us build great parks.

Let us know what matters to you.

- What elements would you most like to see with the park renovation?
- How do you want to use the site?
- Are there specific site activities that are meaningful and why?



# THANK YOU!

## Next Meeting Winter 2025/26

For questions, maintenance requests or  
concerns regarding any of our  
parks contact 311

BOS:  
**311**



October 15, 2025  
Boston Parks and Recreation

