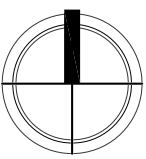
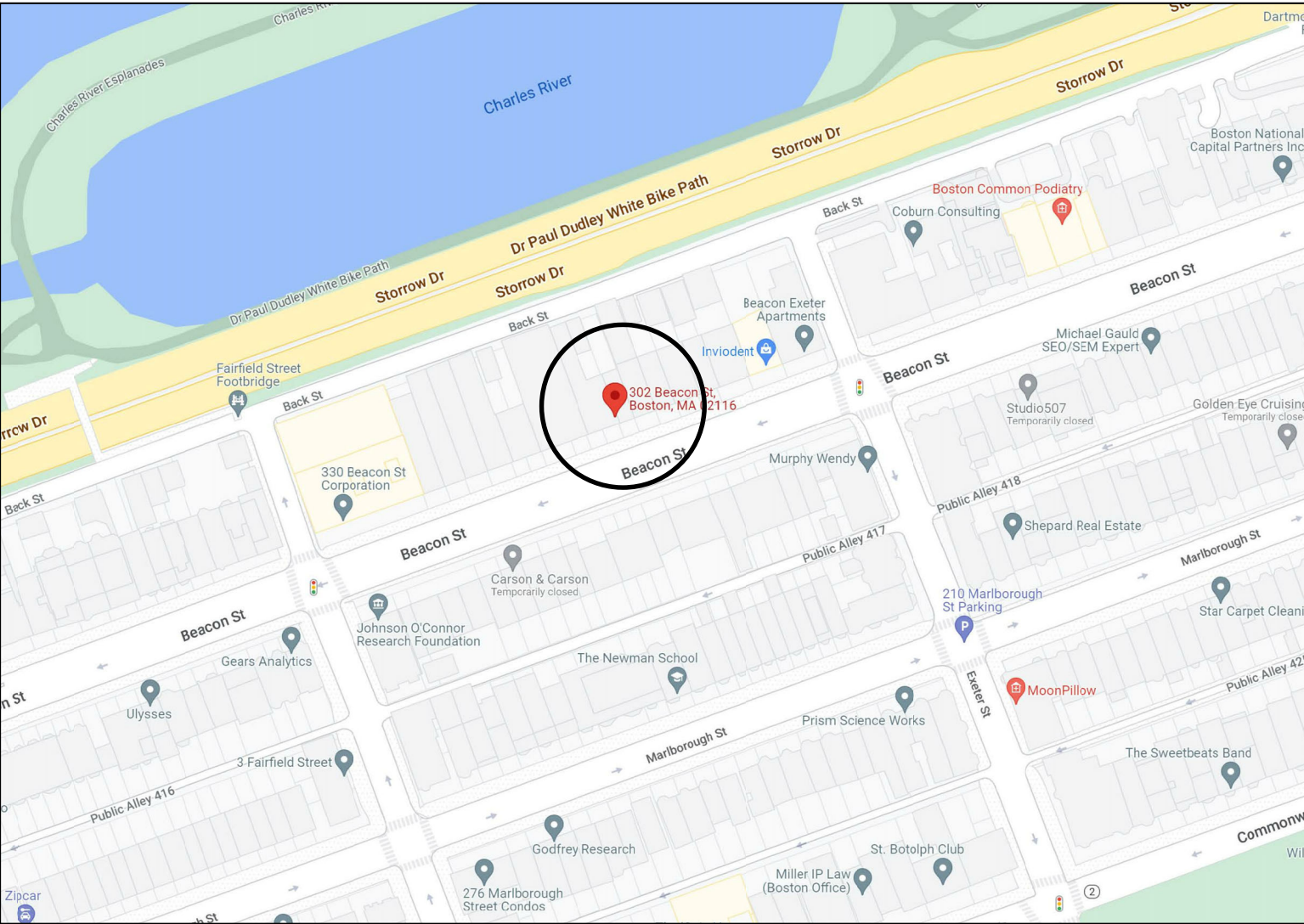
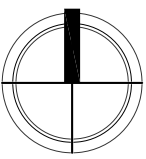
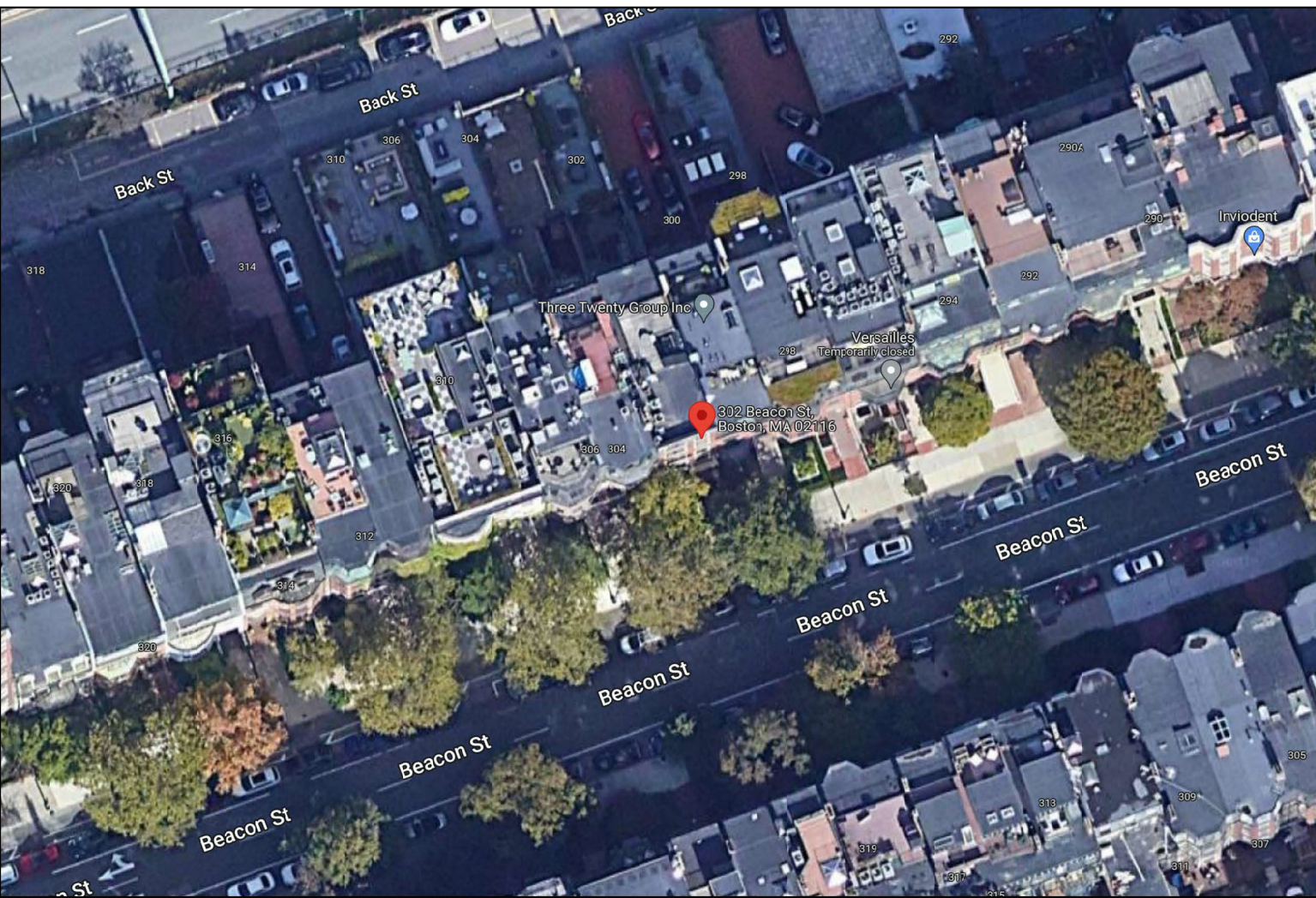


302 BEACON STREET - BOSTON - MA



LOCUS PLAN: NTS



AERIAL VIEW: NTS



2 BROAD STREET
NANTUCKET, MA 02554
508.228.2728
MARKCUTONE.COM

SURVEYOR

HANCOCK ASSOCIATES
121 EAST BERKELEY STREET
BOSTON, MA 02118
617.357.8145

STRUCTURAL DESIGN

PHELAN ENGINEERING
76 CARLISLE ROAD
WESTFORD, MA 01886
978.256.4014

CONTRACTOR

JW CONSTRUCTION, INC
12 GARFIELD CIRCLE
BURLINGTON, MA 01803
617.547.2800

PLUMBING/HVAC DESIGN

ALLIED ENGINEERING
270 LITTLETON ROAD SUITE 11
WESTFORD, MA 01886
401.244.6110

INTERIOR DESIGN

DONNA ELLE DESIGN
9 NOBSKA WAY
NANTUCKET, MA 02554
508.228.7320

BBAC REVISION
KEEP STONE
VENEER

302 BEACON ST N.T.
302 BEACON STREET
BOSTON, MA 02116
MAP: XX PARCEL: XXX

COVER SHEET

C1.1

18 NOVEMBER 2025



2 BROAD STREET
NANTUCKET, MA 02554
508.228.2728
MARKCUTONE.COM

SURVEYOR

HANCOCK ASSOCIATES
121 EAST BERKELEY STREET
BOSTON, MA 02118
617.357.8145

STRUCTURAL DESIGN

PHELAN ENGINEERING
76 CARLISLE ROAD
WESTFORD, MA 01886
978.256.4014

CONTRACTOR

JW CONSTRUCTION, INC
12 GARFIELD CIRCLE
BURLINGTON, MA 01803
617.547.2800

PLUMBING/HVAC DESIGN

ALLIED ENGINEERING
270 LITTLETON ROAD SUITE 11
WESTFORD, MA 01886
401.244.6110

INTERIOR DESIGN

DONNA ELLE DESIGN
9 NOBSKA WAY
NANTUCKET, MA 02554
508.228.7320

BBAC REVISION
KEEP STONE
VENEER

302 BEACON ST N.T.
302 BEACON STREET
BOSTON, MA 02116
MAP: XX PARCEL: XXX

ELEVATIONS

A1.1

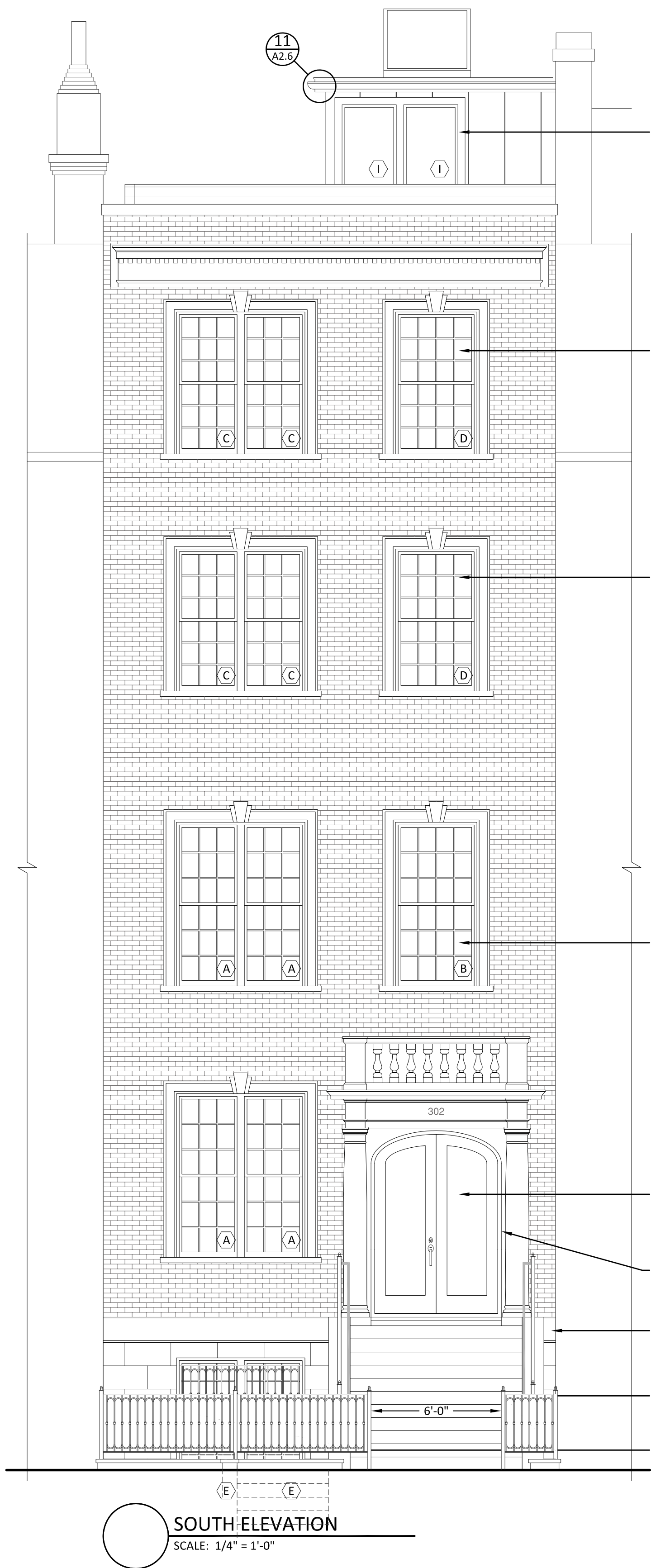
18 NOVEMBER 2025



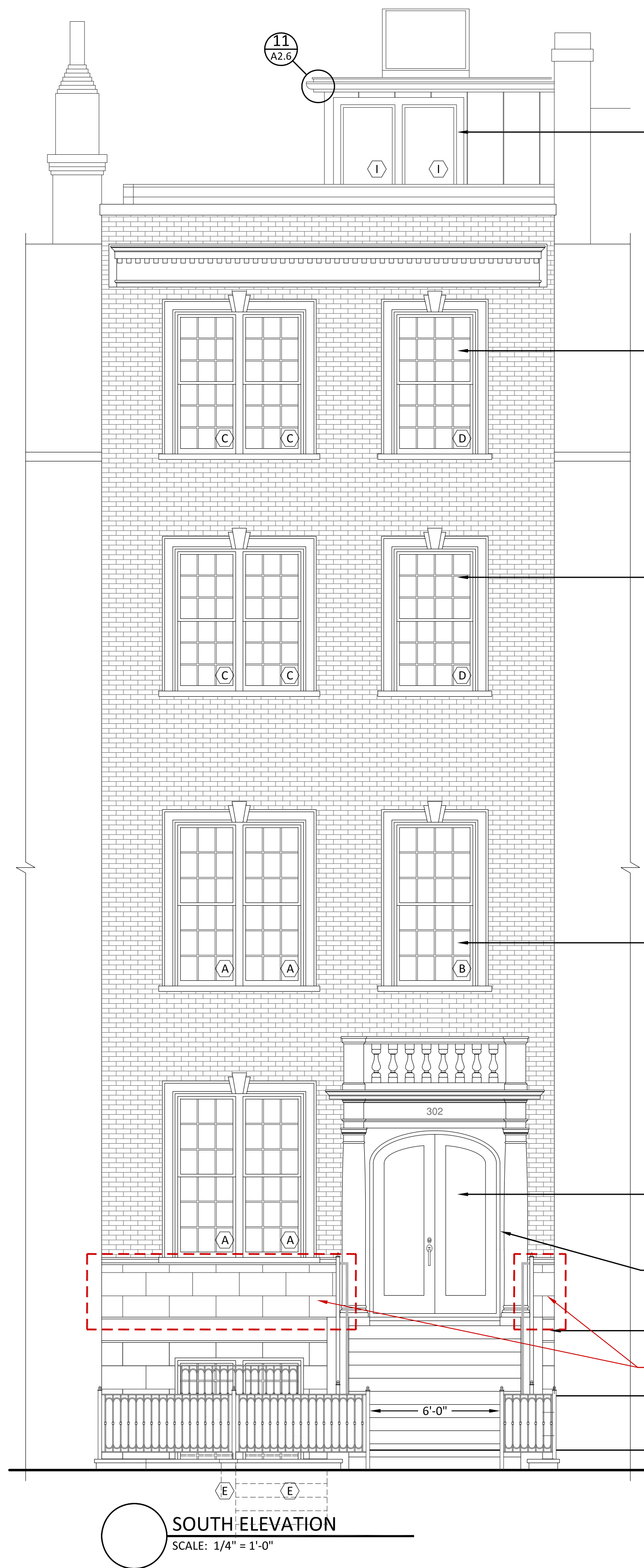
2022



NOVEMBER 2025



FACADE AS APPROVED



FACADE AS PROPOSED

MAINTAIN EXISTING "STONE" FACADE
AT FIRST FLOOR WINDOWS