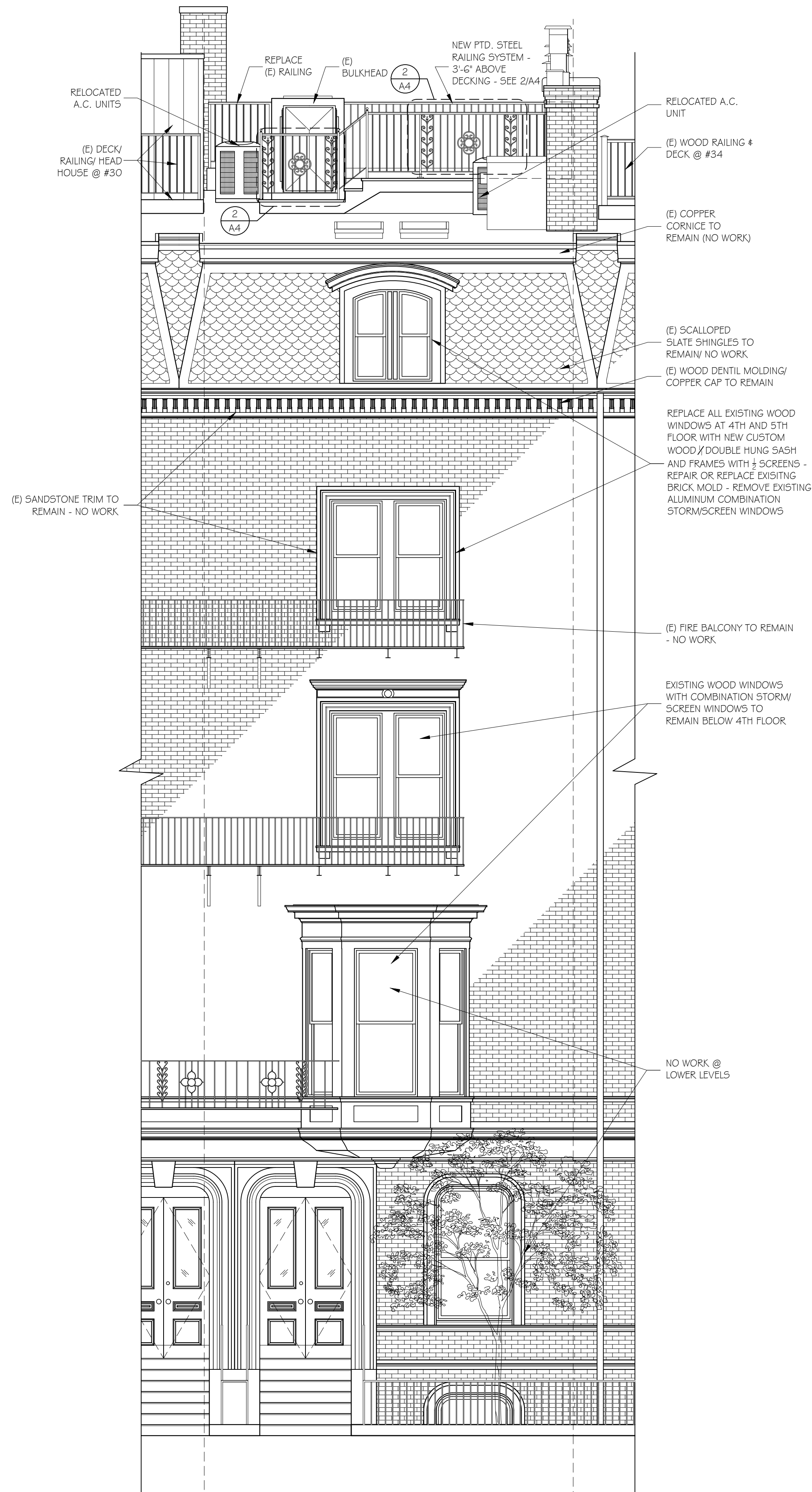


1 BUILDING SECTION
SCALE: 1/4" = 1'-0"

45 Newbury Street, Suite 506 Boston, MA 02116 Phone 617.956.9993 Fax 917.956.9993	
GRASSI DESIGN GROUP	
G D	B G
ALDSWORTH RESIDENCE 32 COMMONWEALTH AVE, UNIT 2 & 3 BOSTON, MA 02116	
BUILDING SECTION	
A2	

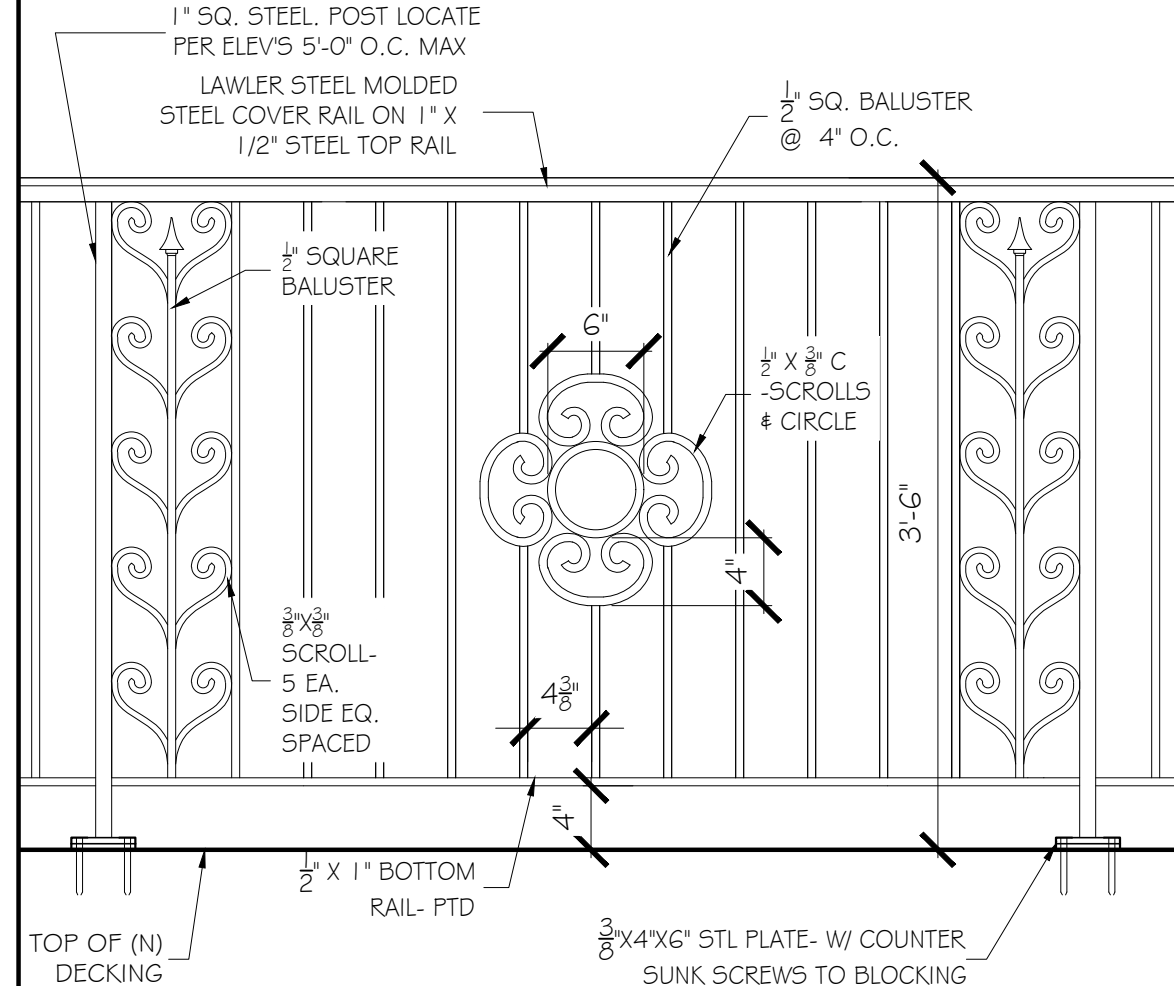
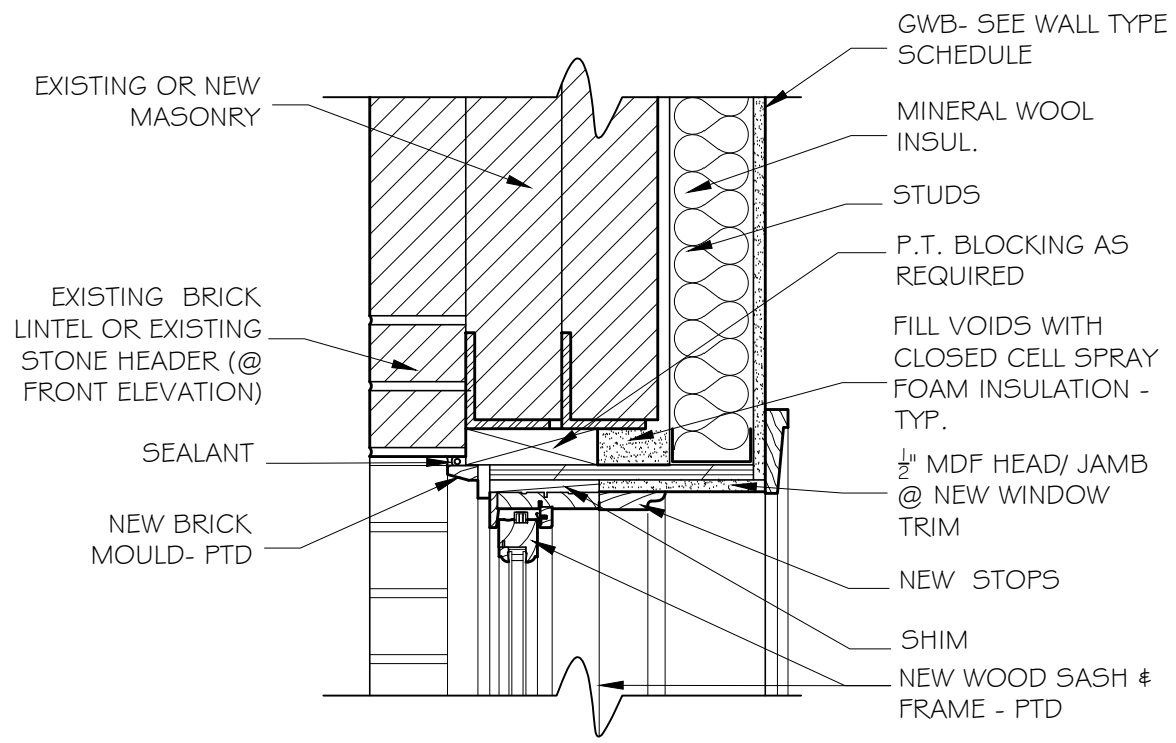


NORTH ELEVATION
SCALE: $\frac{1}{4}" = 1'-0"$



SOUTH ELEVATION
SCALE: $\frac{1}{4}" = 1'-0"$

EXTERIOR DETAILS



1	TYP. WINDOW HEAD DTL. IN MASONRY OPENING (JAMB SIM.)
---	---

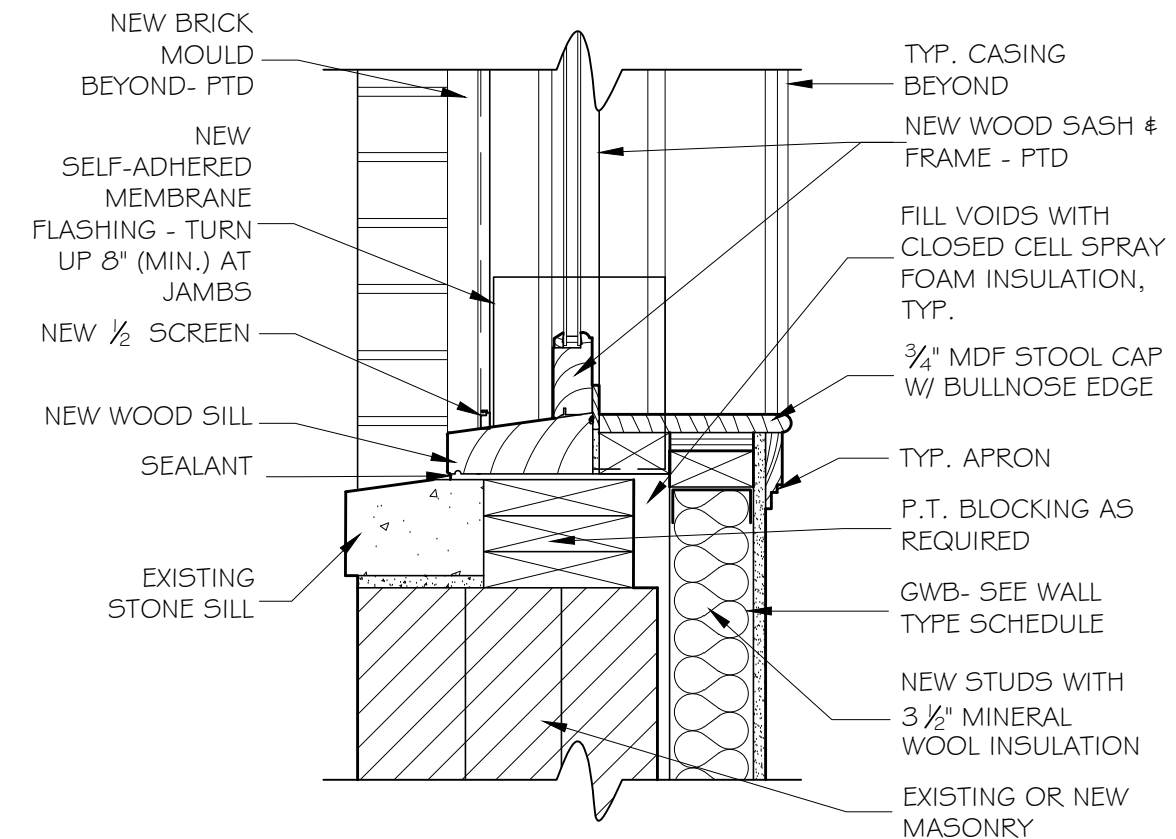
$$I_2^{\frac{1}{2}} = I^1 - O^{\frac{1}{2}}$$

2	RAILING DETAIL @ ROOF DECK
---	----------------------------

$$I'' = I' - O''$$

3	NOT USED
---	----------

4	NOT USED
---	----------



5 TYP. WINDOW SILL DETAIL IN MASONRY OPENING

$$| \frac{1}{2} \rangle = | 1^1 - 0 \rangle$$

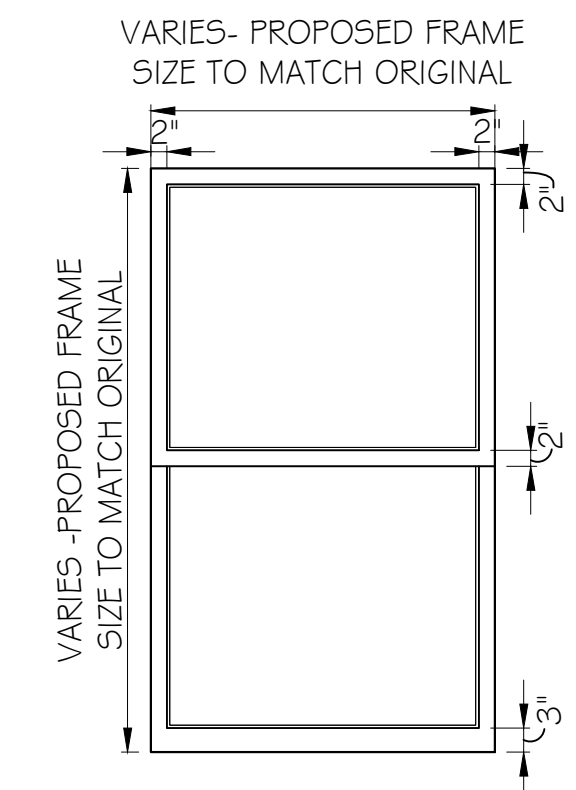
6	NOT USED
---	----------

7	NOT USED
---	----------

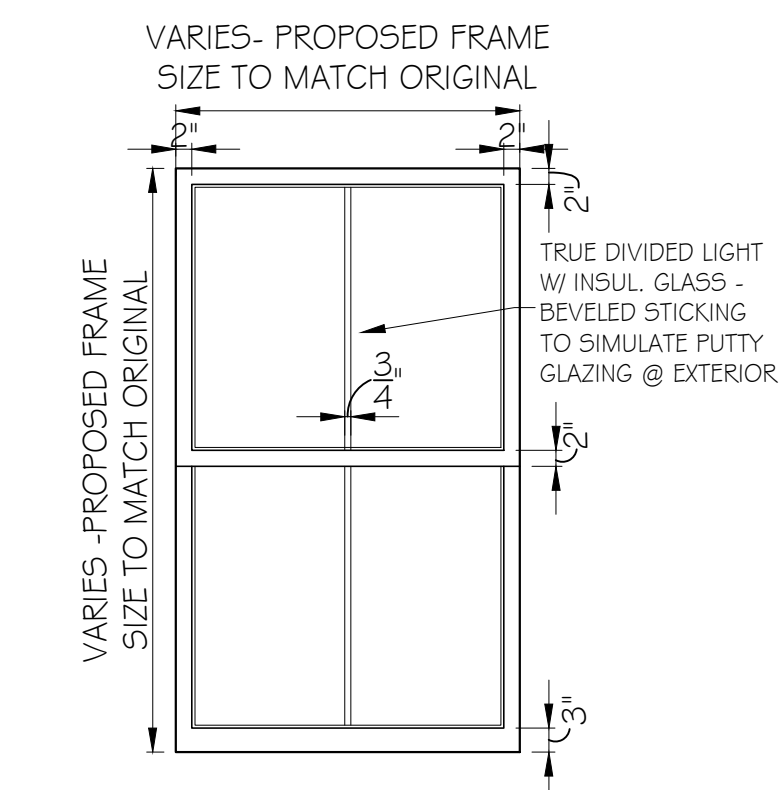
8	NOT USED
---	----------

9	NOT USED
---	----------

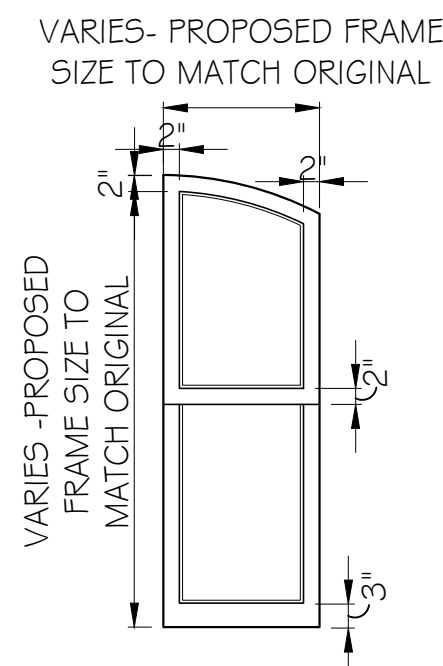
DOOR & WINDOW TYPE ELEVATIONS - SCALE: $\frac{1}{2}" = 1'-0"$



⑩ NEW WINDOW
SASH ELEVATION @ $\frac{1}{2}'' = 1'-0''$
FRONT/MASONRY



⑪ NEW WINDOW SASH $\frac{1}{2}" = 1'-0"$
ELEVATION AT REAR/
MASONRY & DORMER



⑫ NEW WINDOW 1/2" = 1'-0"
SASH @ FRONT/
DORMER

GRASSI DESIGN GROUP

45 Newbury Street, Suite 506
Boston, MA 02116

Phone 617-956-9992
Fax 917-956-9993

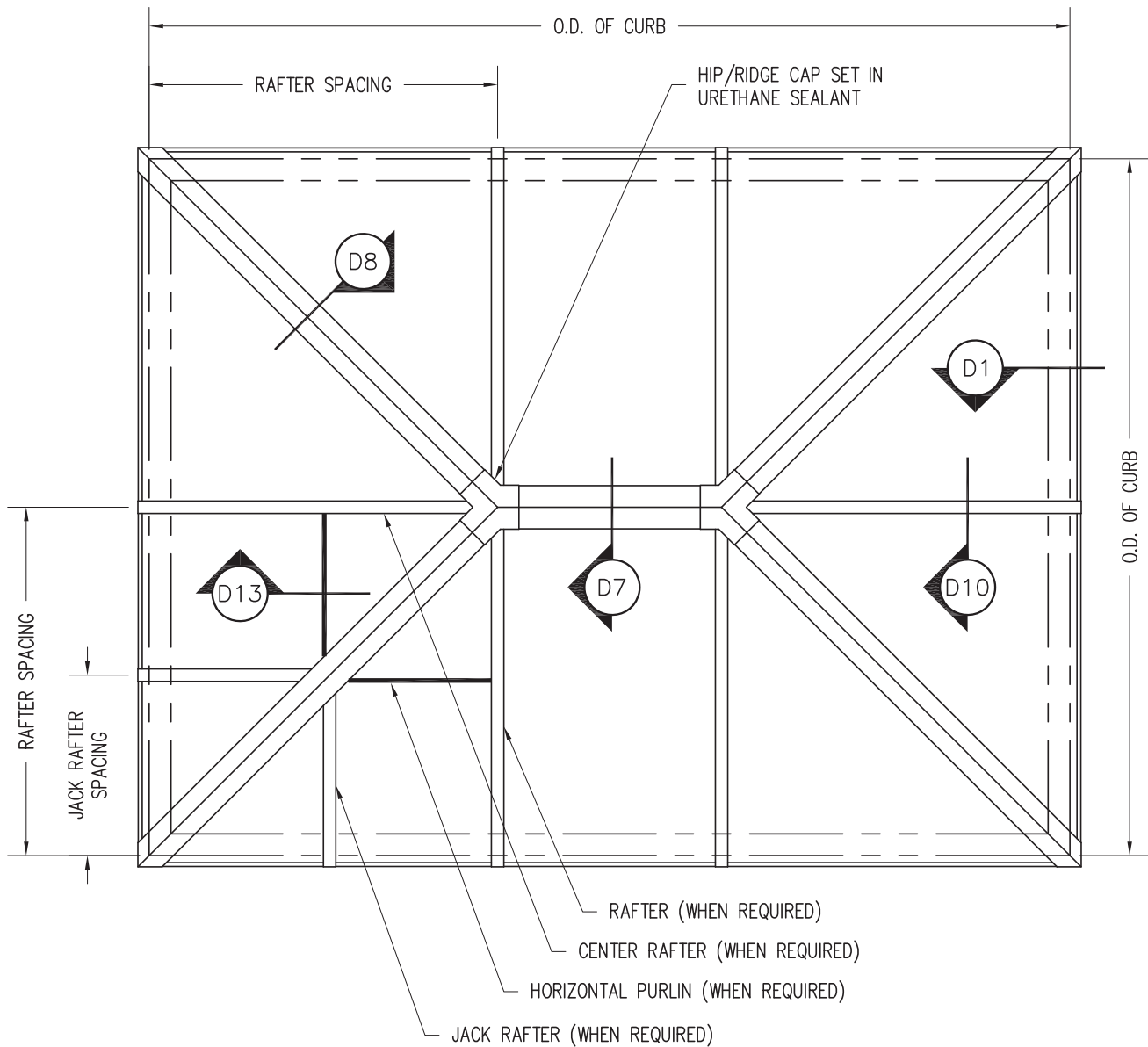
BEAUCHEMIN GRASSI INTERIORS

JOB NO: 2511	SCALE: AS NOTED	
DATE: 09.25.25		
REVISED		

ALDSWORTH RESIDENCE
32 COMMONWEALTH AVE, UNIT 2 & 3
BOSTON, MA 02116

EXTERIOR DETAILS AND WINDOW TYPE ELEVATIONS

A4



GENERAL NOTES:

- 1) RAFTER LOCATION BASED ON WASCO'S RECOMMENDATIONS AND AAMA GLAZING GUIDELINES (BASED ON SIZE OF UNIT, TYPE OF GLAZING, CUSTOMER'S REQUEST, ETC.)
- 2) UNIT PITCHES ARE AVAILABLE FROM 3:12 TO 12:12

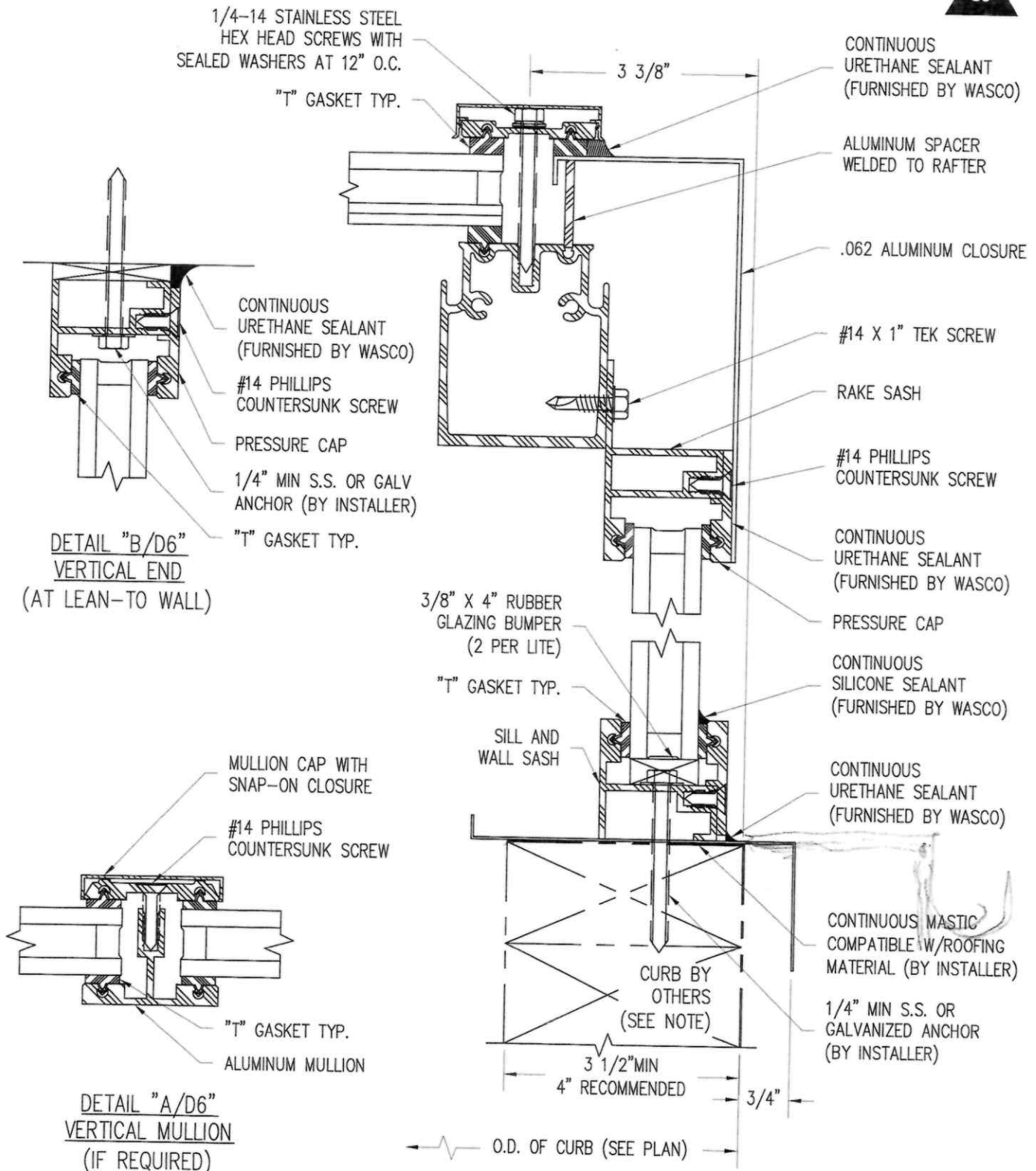
Wasco Part of
VELUX® Commercial

VELUX Wells
 85 Spencer Dr, Unit A
 Wells, ME 04090
 1-800-88-VELUX
 veluxusa.com

PINNACLE 350 OR 600
 (PYH)
 EXTENDED PYRAMID
 PLAN VIEW

PLN2

SKYLIGHT



Skylight Details

Do you need help? ▾



Are You A Pro?

Login/Sign Up

Order Status

My Favorites

CART (0)



KICHLER LIGHTING EXPERTS
Brought to you by **1STOPLighting.com**



See What's Trending Now

BROWSE 🔍

Search for Anything



HISTORY BRANDS COLLECTIONS CEILING WALL LIGHTS FANS OUTDOOR BATHROOM LANDSCAPE LED TRENDING

HOME > Kichler Lighting > Landscape Lighting > Deck - Step Lighting > Step Lights > 15165AZ

Save/Compare Share



Kichler Lighting - 15165AZ - Low Voltage 1 Light Deck Lamp - With Transitional Inspirations - 1.75 Inches Tall By 3.75 Inches Wide

Item # 15165AZ

Product Details ▾

Be the first to review this item!

Reg. ~~\$62.99~~ **Save 15%**

\$53.54 On Special

2 Day Delivery or Get \$25 Back View Details

Free Shipping on orders over \$49!

Shipping To: ZIP/Postal Update Cancel



1



Add to Cart

Would you like to purchase an exclusive lifetime warranty? What's Covered

☒ 1 Year warranty (+0.00)

☐ Lifetime Warranty (+\$9.99)

⚠ Price will be increasing on 8/1.

Make your purchase now to lock in your price.



FREE Returns
Pay NO Fees!



Lifetime Warranty
Available



150% Low Price
Guarantee

Have Product Questions?

844-237-8477

Get a Trade Quote

May We Also Suggest



Kichler Lighting
15065



Kichler Lighting
15765



Kichler Lighting
15064



Kichler Lighting
15073AZT



Kichler Lighting
15077AZT



Kichler Lighting
12672

Overview

More Info

Product Description

Mini Deck Light - Small Size, Simple Styling And Economical Thermoplastic Resin Construction. Ideal For Lighting Along Decks, Porch Steps And Above Stairways In Salt Air Environments.



LIFETIME WARRANTY

A Lifetime Warranty is available for this product. **More Info**



Ships to Canada - No Customs or Duty Fees. **More**



This product is CSA Certified. **More Info**



This product is cUL Certified.



This product is ETL Certified. **More Info**



This product is UL Certified. **More Info**



This product is Wet Rated and suitable for use Outdoors

Dimensions & Weights

Length:	2.25"
Width/Diameter (in):	3.75"
Height:	1.75"
Weight:	0.5 lbs

Installation Details

Wire Length:	71"
Some Assembly Required:	Yes

Lamping Details

# of Bulbs:	1
Standard Wattage:	6.5 Watts
Bulb Type:	Xenon
Lamp Base Type:	T5

Product Details

Dimmable:	No
Power Source:	Hardwire
Voltage Rating:	12 V
Material:	Resin
Made In:	Taiwan

What is Included

Bulbs Included:	Yes
-----------------	-----

Cut Sheet

Spec Sheet

Installation Sheet

WARNING: Ca Prop 65 Notice
Pro Product Request

Customer Reviews

Powered by

0 Reviews

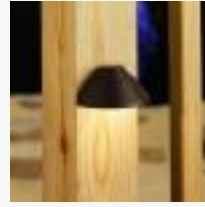
Write A Review

Ask A Question

REVIEWS QUESTIONS

Be the first to write a review

Your Recently Viewed Items



Customer Service

Help Center
Order Status
Returns & Replacements
International Shipping
Login

Shopping

On Sale Items
Our Brands
Trade Customers
Loyalty Program
View Your Cart

Company Info

About Us
Partners
Careers
Privacy Policy
Terms of Use
Affiliate Program
Accessibility

Customer Support

Ref # R79160142

Already Order?

File a Return or Replacement **here**.

View Your Order Status **here**.

For anything else, visit us at our **HelpDesk**.

Ready to Order?

Talk with our Sales Associate
Monday - Friday: 6:00 a.m. to 5:00 p.m. PST
Saturday & Sunday: Online Chat Available from 6:00 a.m. to 3:00 p.m. PST

© 2022 KichlerLighting. All Rights Reserved.



Your privacy is important to us. You accept the deposit of cookies necessary for the site's operation, performance enhancement, and analytics by continuing your navigation. To learn more and, in particular, to oppose their installation, we invite you to consult our page on cookies and similar technologies. [Read More](#)

I Agree

Chat Now!

