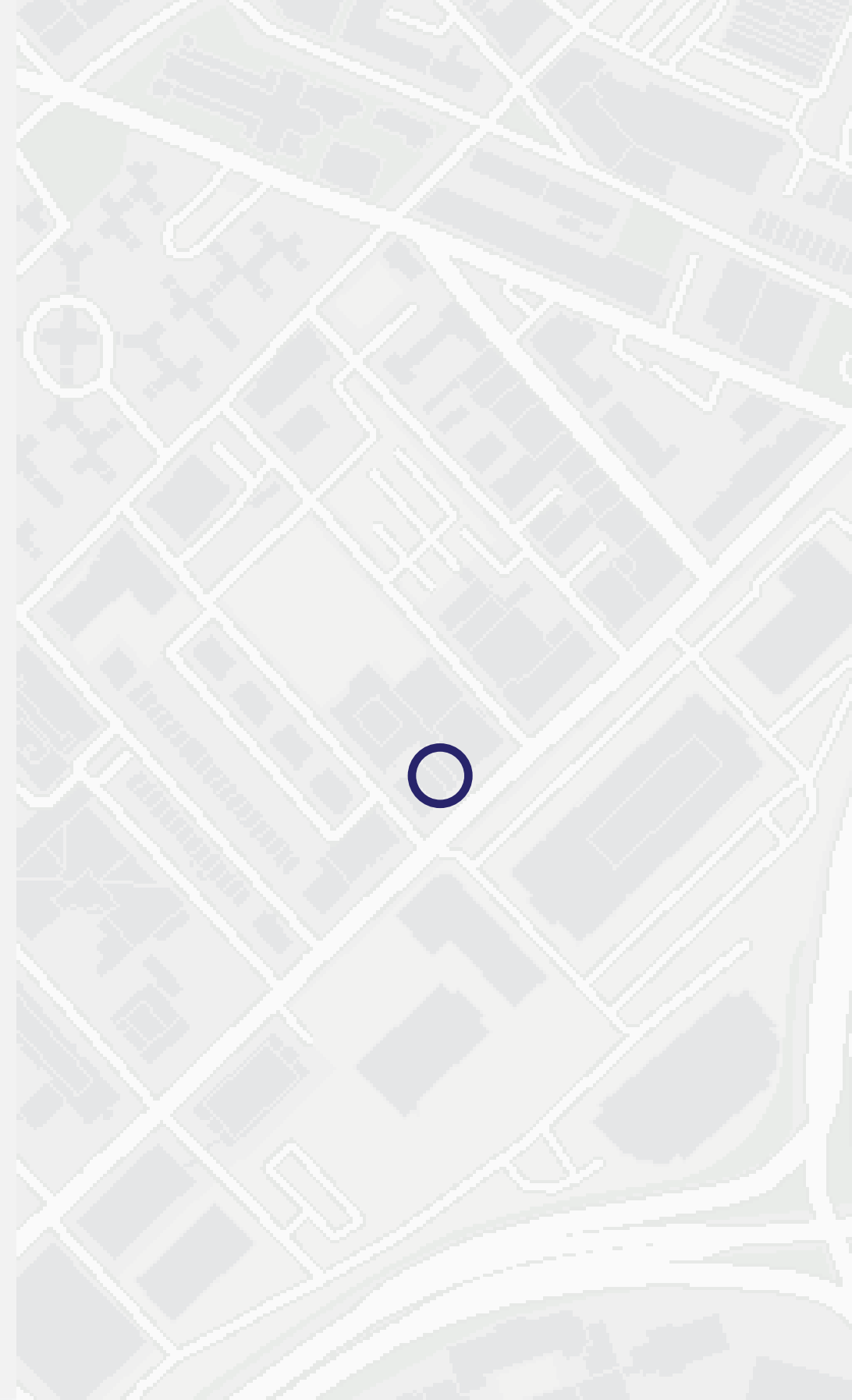


CITY REALTY

SOUTH END LANDMARKS COMMISSION

587 ALBANY STREET

BOSTON, MA 02118



EMBARC



MAY 5, 2026



SITE

INTERSTATE I-93





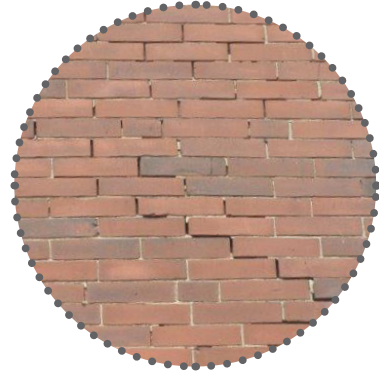


ALBANY STREET PERSPECTIVE

STUCCO



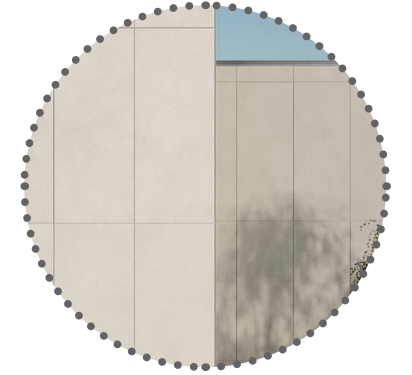
BRICK



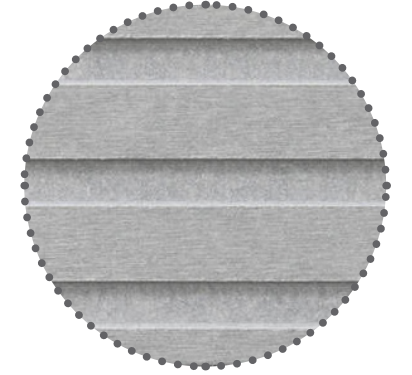
ACM METAL PANEL CANOPY



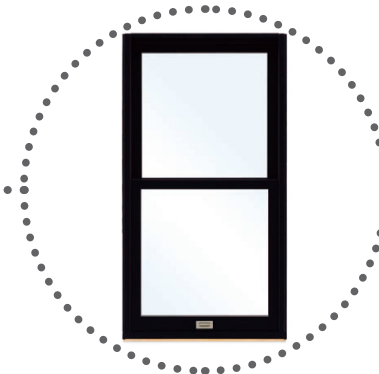
FIBER CEMENT BOARD - PATINA ROUGH, PEARL



FIBER CEMENT BOARD - PATINA INLINE, GRAPHITE



ALUMINUM CLAD WOOD WINDOWS

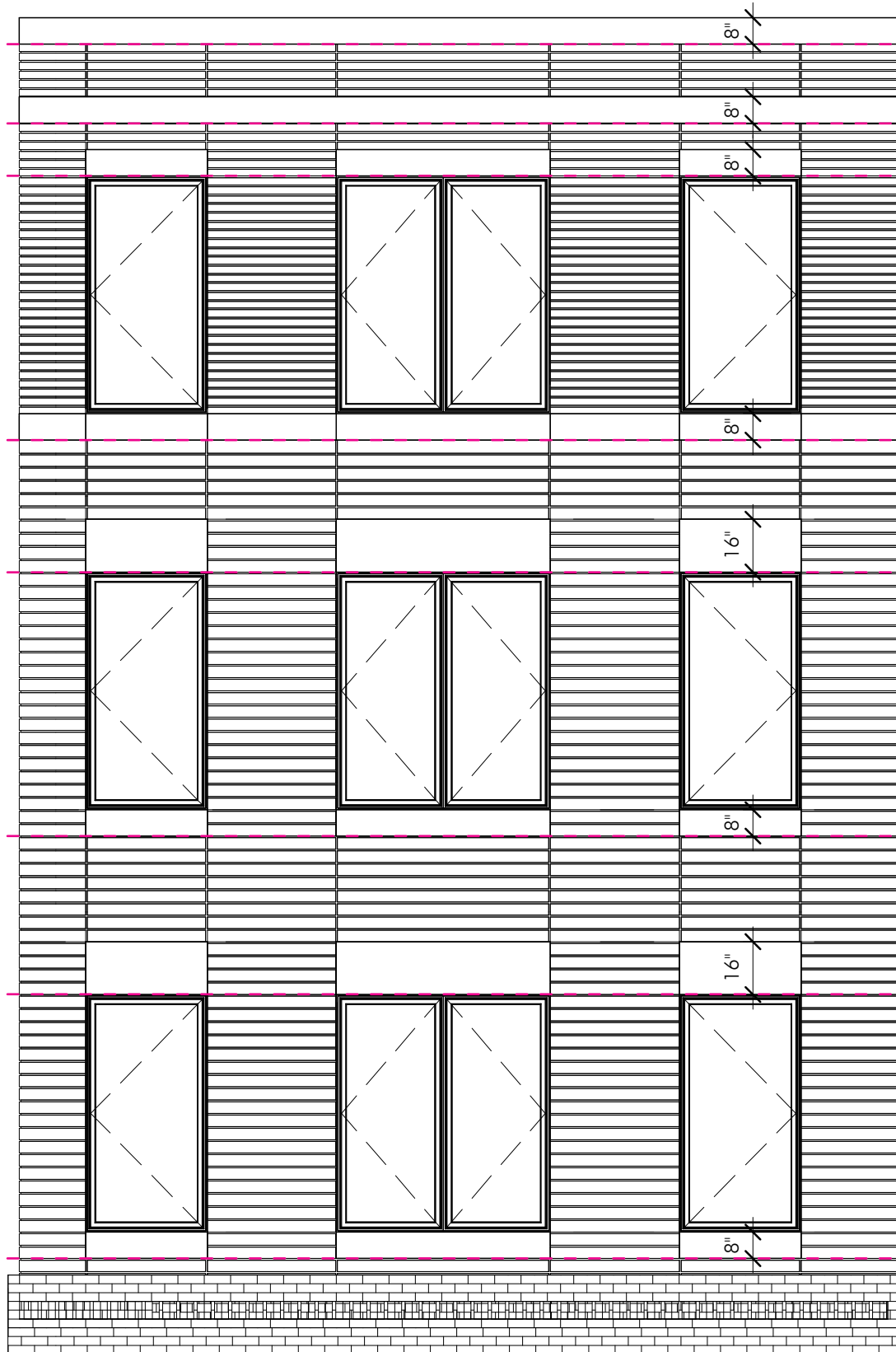




PROPOSED RENDERED ELEVATION

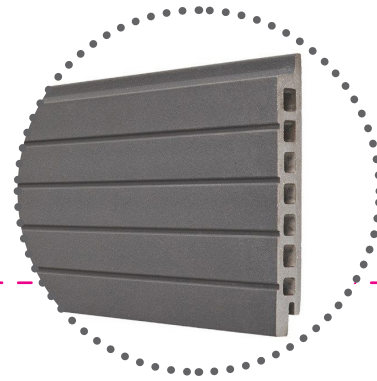


PROPOSED SCALED ELEVATION



PREVIOUS SCALED ELEVATION

TERRACOTTA PANELS



PREVIOUS MATERIAL



PROPOSED SCALED ELEVATION

FIBER CEMENT BOARD -
PATINA ROUGH, PEARL



FIBER CEMENT BOARD -
PATINA INLINE, GRAPHITE



PROPOSED MATERIALS

Swisspearl Patina Rough NXT – Available colours



P 222

Panels

The panel is colored through and has a velvety, textured surface on the visible side. The panel surfaces are hydrophobized on all sides. Their appearance is reminiscent of natural materials, such as naturally aged sandstone.

Panel format

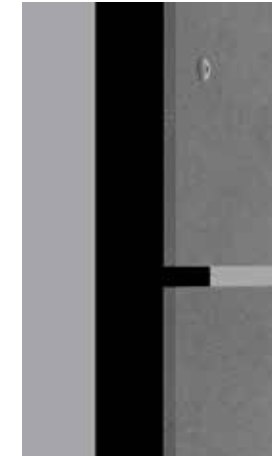
Swisspearl Largo:
Maximum usable format
120.08" x 49.21" (3050 x 1250 mm),
panel thickness 0.31" (8 mm)

Mounting

Visible on wooden substructure:
Bolts with painted head

Visible on metal substructure (aluminum or steel):

Blind rivets with painted head



Open joints

Fig. 1



Swisspearl Patina Inline NXT – Available colours



P 045

Panels

The panel is colored through with linear, milled structural grooves. This gives the building a unique 3D effect and a dynamic appearance. The panel surfaces are hydrophobized on all sides.

Panel format

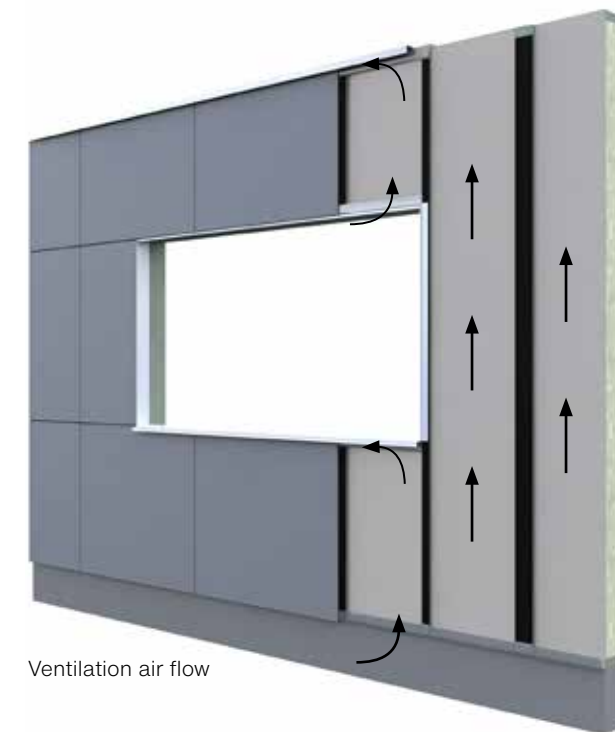
Swisspearl Largo:
Maximum usable format
120.08" x 49.21" (3050 x 1250 mm),
panel thickness 0.37"/0.31" (9.5/8 mm)

Mounting

Visible on wooden substructure:
Bolts with painted head

Visible on metal substructure (aluminum or steel):

Blind rivets with painted head



Ventilation air flow



EMBARC



STACK
+ CO.

ROAD
PLATES

ROAD
PLATES
1-800-99-PLATES

rebelle

591

587 ALBANY

THANK YOU

TOW ZONE
RESERVED
NO
SNOW
PILING