

**B O S T O N  
P U B L I C  
H E A L T H  
C O M M I S S I O N**



**FY27 Budget  
Morning Session**

**Bisola Ojikutu, MD MPH FIDSA**

Commissioner of Public Health, City of Boston  
Executive Director, Boston Public Health  
Commission

**James Hooley, EMT-P**

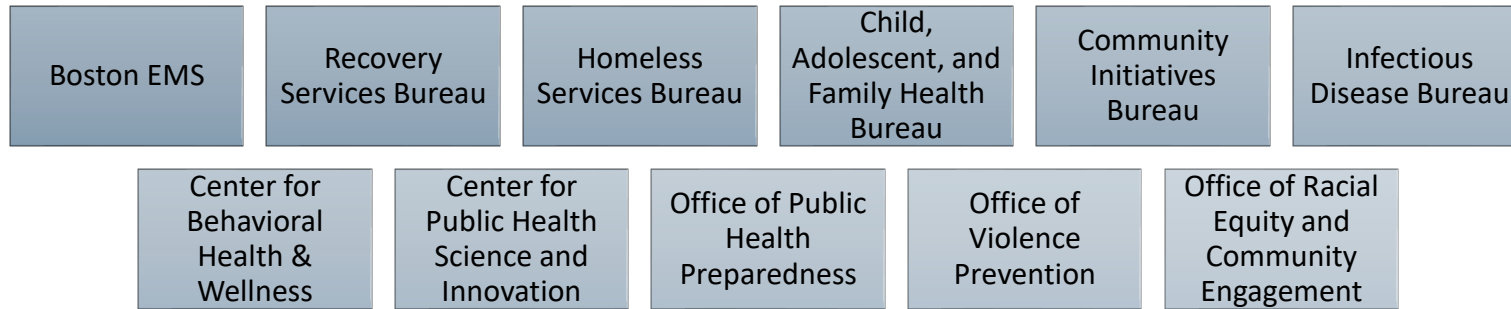
Chief of EMS, Boston Emergency Medical  
Services

**Christopher Valdez**

Director of Budget and Fiscal Compliance,  
Boston Public Health Commission

# Our Mission

To work in partnership with communities to protect and promote the health and well-being of all Boston residents, especially those impacted by racism and systemic inequities.

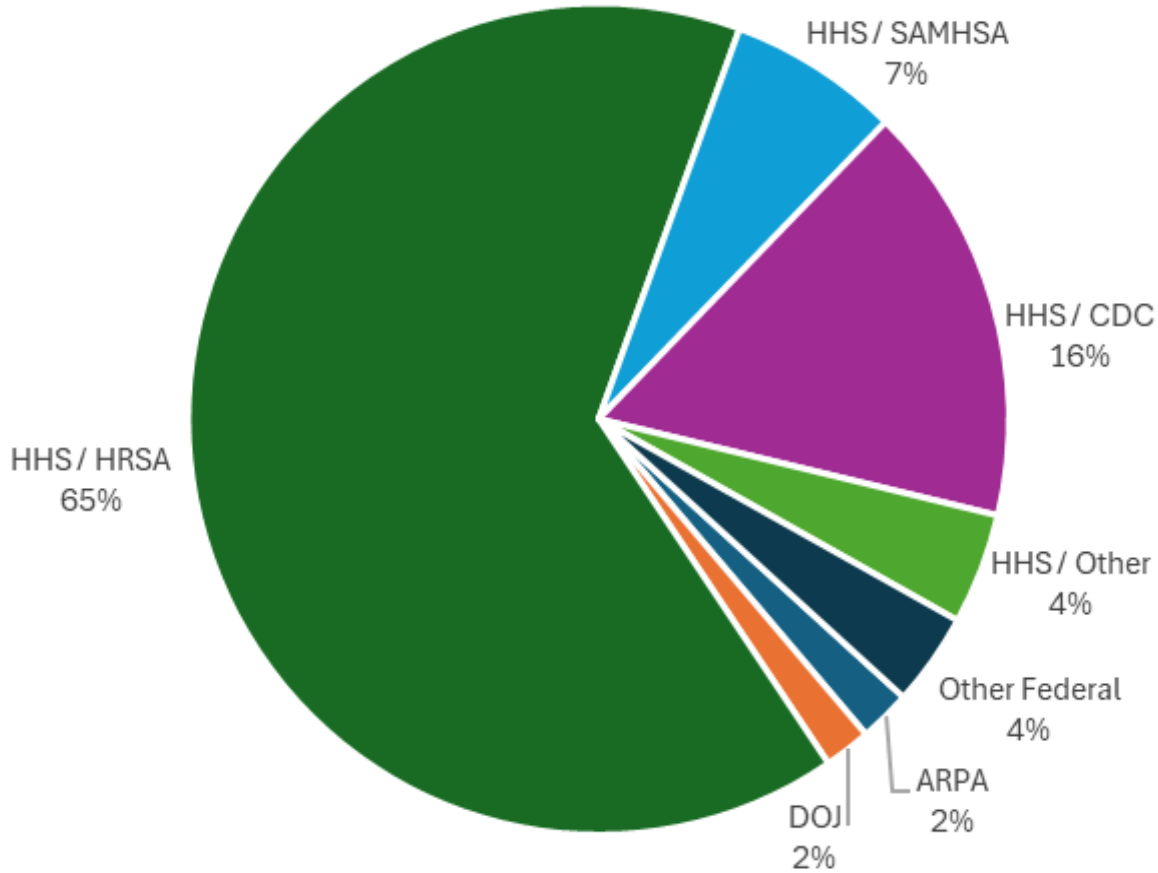


**6 Bureaus**  
**>1,400 Employees**  
**~\$275 Million Annual Budget (Operating & External)**

# FY27 Maintenance Budget Formulation

- Unlike most city departments, BPHC is expected to fully cover its own fringe benefit costs.
- In FY27, the SBRS pension expense is increasing by 5% and healthcare premiums by 20%.
- These increases alone would have necessitated service cuts of over \$4M before applying any targeted reductions.
- In partnership with OBM, BPHC controlled for these fixed increased costs in FY27 as follows:
  - Removing the FY26 values of major fringe components from the FY26 adopted appropriation value
  - Applying a targeted reduction to the remaining FY26 appropriation value
  - Adding back the FY27 values of those same components, along with any additional transfers, to arrive at an FY27 appropriation
- The targeted reduction was primarily achieved by increasing budgeted revenue which is a direct offset to the total appropriation value.
- The end result is an appropriation increase of 1.6% which leaves services intact while meeting the goals of departmental reductions.

# Federal Funding



- **FY27 federal funding projection:** \$41M, or 15% of BPHC budget.
- Reduction between FY26 and FY27 primarily due to winddown of ARPA and reclassification of certain DPH fee for service activities.
- Majority of funding through the U.S. Department of Health and Human Services.
- Preparedness activities:
  - Close monitoring of federal actions and litigation
  - Regular info sharing + response meeting

# Capital Projects

- Expected completion of a new EMS station on the South Boston Waterfront in 2026, which will improve EMS response times in the area.
- A state of good repair project at the Northampton Square Garage is expected to progress, a key asset for BPHC employees, Boston EMS, BMC employees and tenants of the property's residential building.
- Boston EMS continues efforts to modernize the department's radio infrastructure, replacing outdated equipment, strengthening system reliability and coverage, and enhancing coordination with Police and Fire.
- In partnership with DoIT, BPHC completed Phase One of a server infrastructure upgrade. Phase 2 begins in FY27, ensuring BPHC data and systems remain reliable, secure, and cost efficient.

# LIVE LONG AND WELL

BOSTON'S POPULATION HEALTH  
EQUITY AGENDA

CITY of BOSTON



Lead with data

Establish and Strengthen partnerships

Share decision-making power with  
communities

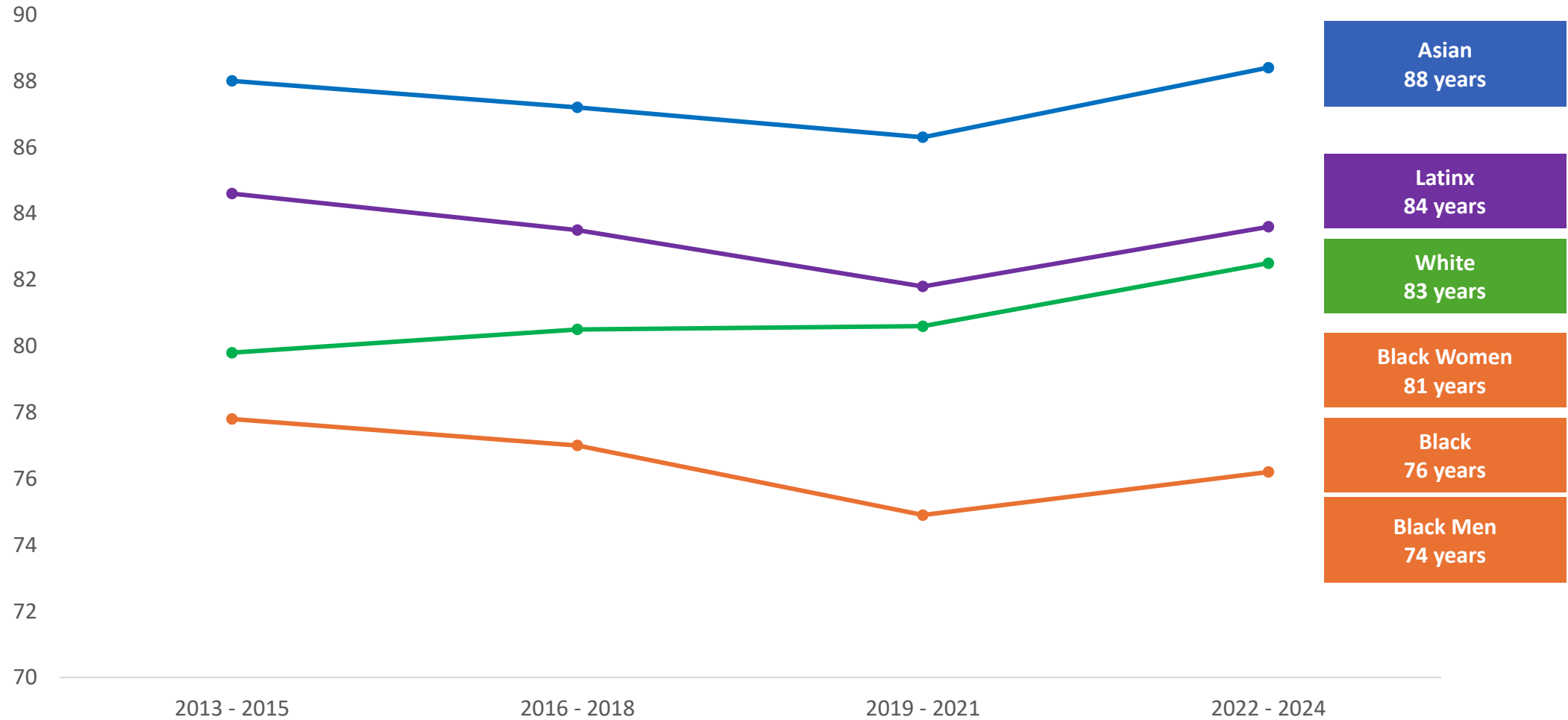
Focus on upstream social determinants of  
health

Support place-based strategies to  
address local needs

Invest collaboratively

**Live Long and Well Goal: Close Boston's Life Expectancy Gap by 2035**

# Trends in Life Expectancy in Boston by Race and Ethnicity 2013 - 2024





# LIVE LONG AND WELL

BOSTON'S POPULATION HEALTH  
EQUITY AGENDA

## Recent Investments:

- **\$10 million** Catalyst Grants (Atrius Health Equity Foundation)
- **\$1 million** Declaration of Racism as a Public Health Crisis
- **\$1 million** Dana Farber Cancer Institute

# Data to Action

- Community Health Needs Assessment and Improvement Plan
- Center for Public Health Science and Innovation leads research, surveillance, and data analysis – more reports forthcoming

## CHIP PRIORITY AREAS



# Recovery Services Bureau

**BPHC's Recovery Services Bureau (RSB) works to prevent overdose, expand treatment access, and support recovery through residential treatment, harm reduction services, outreach programs, and community partnerships.**

**11 programs/divisions total, 3 campuses, ~151 staff total**

- Harm Reduction (AHOPE, Street Outreach)
- Access to Care (PAATHS)
- Day spaces
- Community Prevention (Youth & Overdose)
- Residential Treatment (Entre Familia, Transitions)
- Strategic Partnerships (Low threshold shelter, Opioid Settlement funding, Overdose Data to Action)
- Syringe Clean-up (Mobile Sharps Team; Back2Work; Street Outreach)

# Warm Weather Response

BPHC is working to support the City's warm weather plan to prevent outdoor substance use, increase quality of life, and improve health outcomes by:

- Leading the Mass and Cass High Utilizers Table
- Developing a post-deflection communication process that expands the treatment and stabilization services
- Convening the Nubian Square Task Force

# Expanded Syringe Collection and 311 Response

- **Mobile Sharps Team:** 311 response and proactive sweeps.
- **Outreach Team:** expanded services to 7 days/week, 365 days of the year, with 18 hours of coverage on weekdays and 13 hours of coverage on weekends.
- **Back2Work:** a sustained partnership with the Newmarket Business improvement district, with a 25-person team of people in early recovery who pick up syringes throughout the South End, Nubian Square, and nearby neighborhoods.
- **Kiosks** stationed throughout the city where anyone can dispose of syringes.

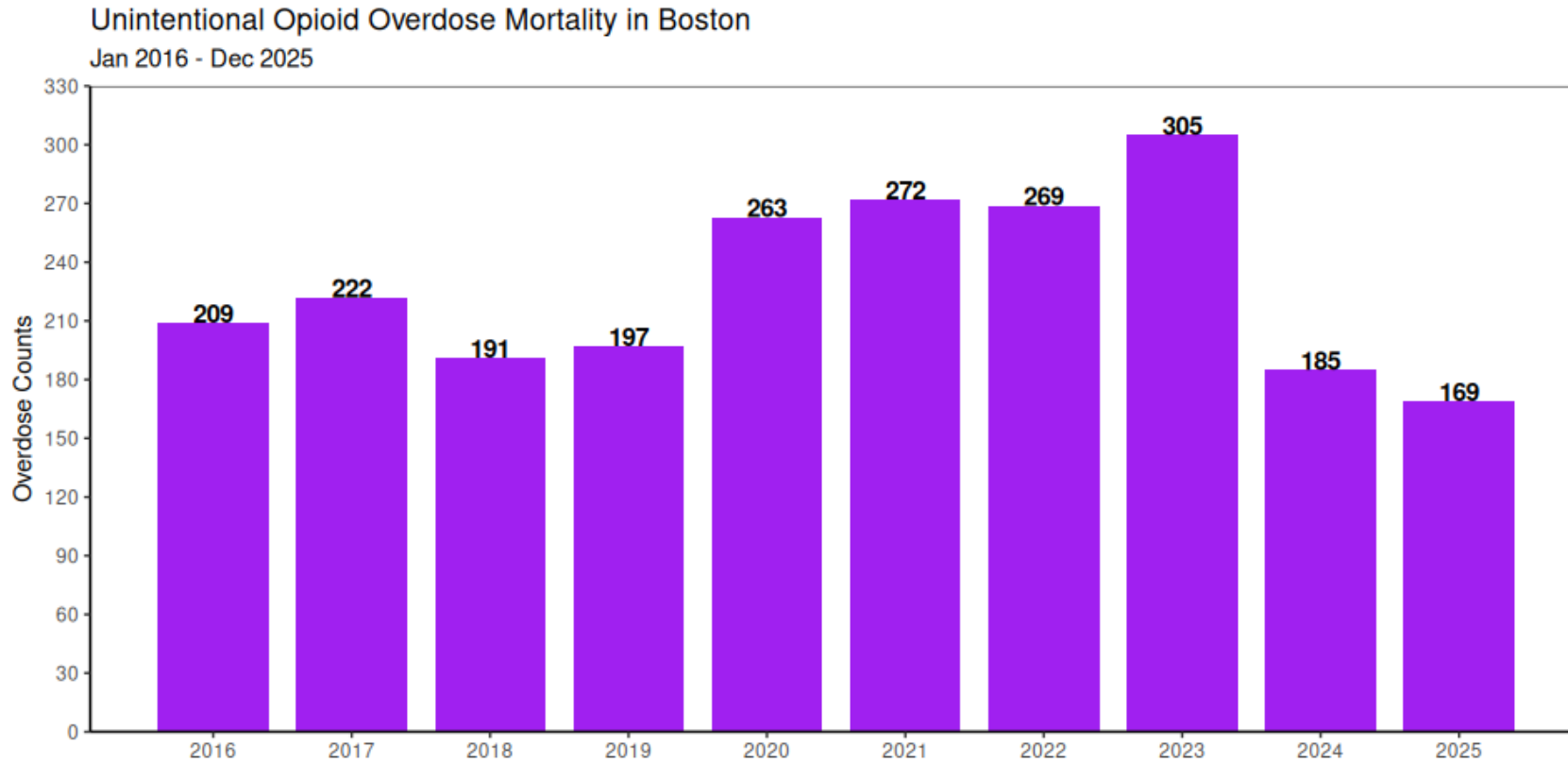


# Strengthening the Continuum of Treatment & Care

**In FY26, BPHC continued to improve pathways to recovery and strengthen recovery treatment:**

- **PAATHS:** piloted a new program to help clients stay in care, and expanded engagement at low threshold housing sites
- **Transitions residential treatment program:** increased onsite access to psychiatric, mental health, and medication-assisted treatment services
- **Entre Familia:** launched a new outreach marketing program and invested in staff training to improve bilingual substance use disorder treatment program for pregnant and postpartum women and their children

# Overdose Mortality



Data Source: Registry of Vital Records and Statistics, MA Dept of Public Health.  
Data for 2023, 2024, and 2025 are provisional and may be subject to change.

# Homeless Services Bureau

**BPHC is the largest provider of emergency shelter services in New England, operating the 112 Southamptton Street and Woods Mullen Shelters.**

- Sustaining low threshold shelter sites (Friends Floor and Willows)
- Workforce development program with a “work first” framework
- Moving guests quickly to permanent housing



# **FY27 BUDGET HEARING**

**Jim Hooley, EMT-P**  
Chief of Department  
Boston Emergency Medical Services

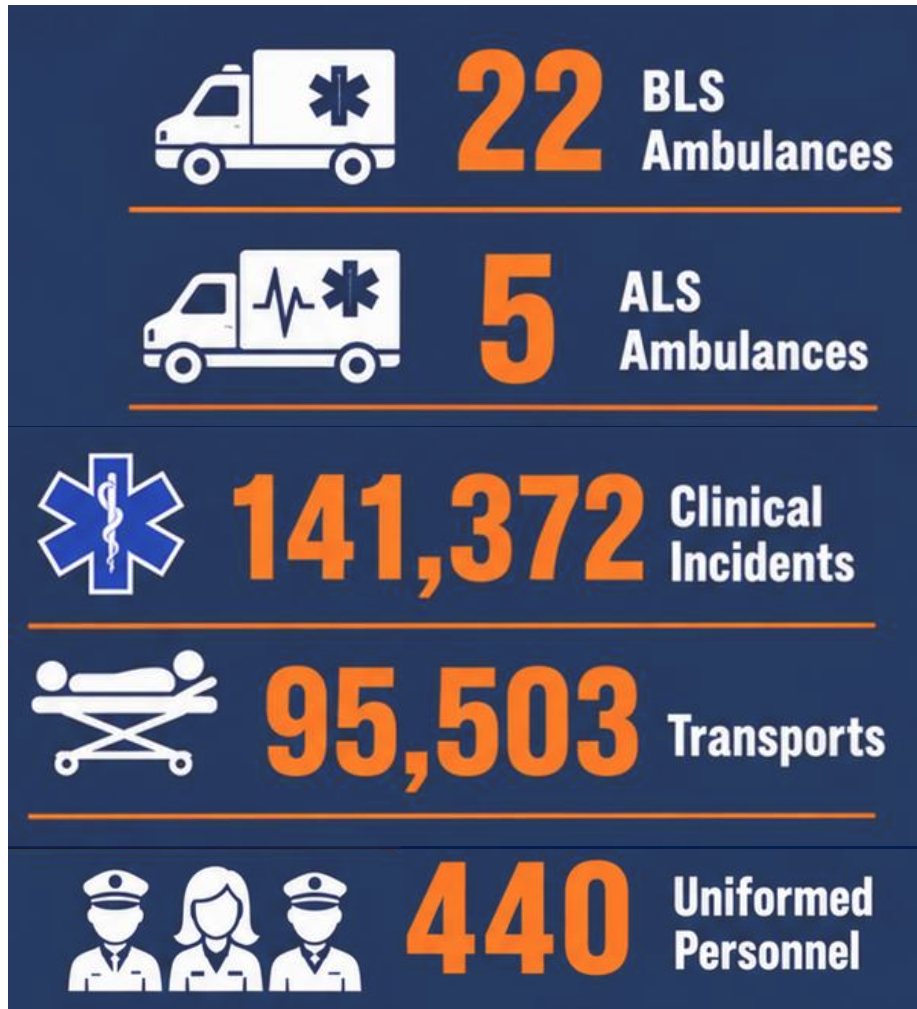
# Our Mission

---

Boston EMS is committed to compassionately delivering excellent pre-hospital care while protecting the safety and health of the public.



# 2025 By the Numbers



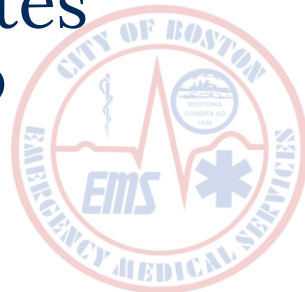
- Respond to an average of **387** incidents per day
- **1830** behavioral health patient encounters by the ARM units
- Special Operations coordinated medical coverage for nearly **1,000** events
- Community Initiatives assisted more than **170** families with child car seat installations & coordinated more than **68** CPR and AED certification classes



# Managing Volume & Response Times



- Added a 24-hour ambulance in Dorchester
- Expanded night shift coverage in Jamaica Plain
- Expanded ARM unit operations
- Adding additional ambulances as staffing permits
- P1 median response times dropped from 7.5 to 6.8 minutes this year to date, compared to same time last year.



# Personnel

---

- **160% reduction in attrition** amongst badged members from 2022 to 2025.
- **22 department members were promoted** to paramedic, supervisory, and command ranks.
- **14 paramedic school scholarships** awarded to department EMTs.



# Personnel

---

- **120 EMT scholarships** were awarded for EMT Courses.
- The Boston EMS Community EMT Course enrolled more than **80 students** last year.
- Hired **30 cadets** and **67 new EMTs** in 2025.



# Equipment & Systems

---

- **New ambulances** delivered in FY25 and more on order for FY27.
- Upgraded **Central Emergency Medical Direction (CMED)** system.
- Modernization of EMS **radio infrastructure** and investment in **new portable radios**.



# South Boston Waterfront Station

---

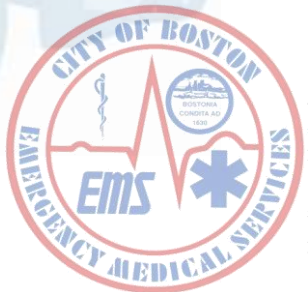


# Thank You

---

Thank you to the members of Boston EMS who continue to rise to the challenge and meet the needs of the City of Boston and its residents every day.

**Happy National EMS Week!**



**B O S T O N  
P U B L I C  
H E A L T H  
C O M M I S S I O N**



**FY27 Budget  
Afternoon Session**

**Bisola Ojikutu, MD MPH FIDSA**  
Commissioner of Public Health, City of Boston  
Executive Director, Boston Public Health  
Commission

**Christopher Valdez**  
Director of Budget and Fiscal Compliance,  
Boston Public Health Commission

# Child, Adolescent, and Family Health Bureau: Youth Engagement

## Child and Adolescent Health

- Boston Area Health Education Center
- Peer Leadership Institute
- Start Strong
- Youth Development Network
- School Based Health Centers



# Child, Adolescent, and Family Health Bureau in FY26

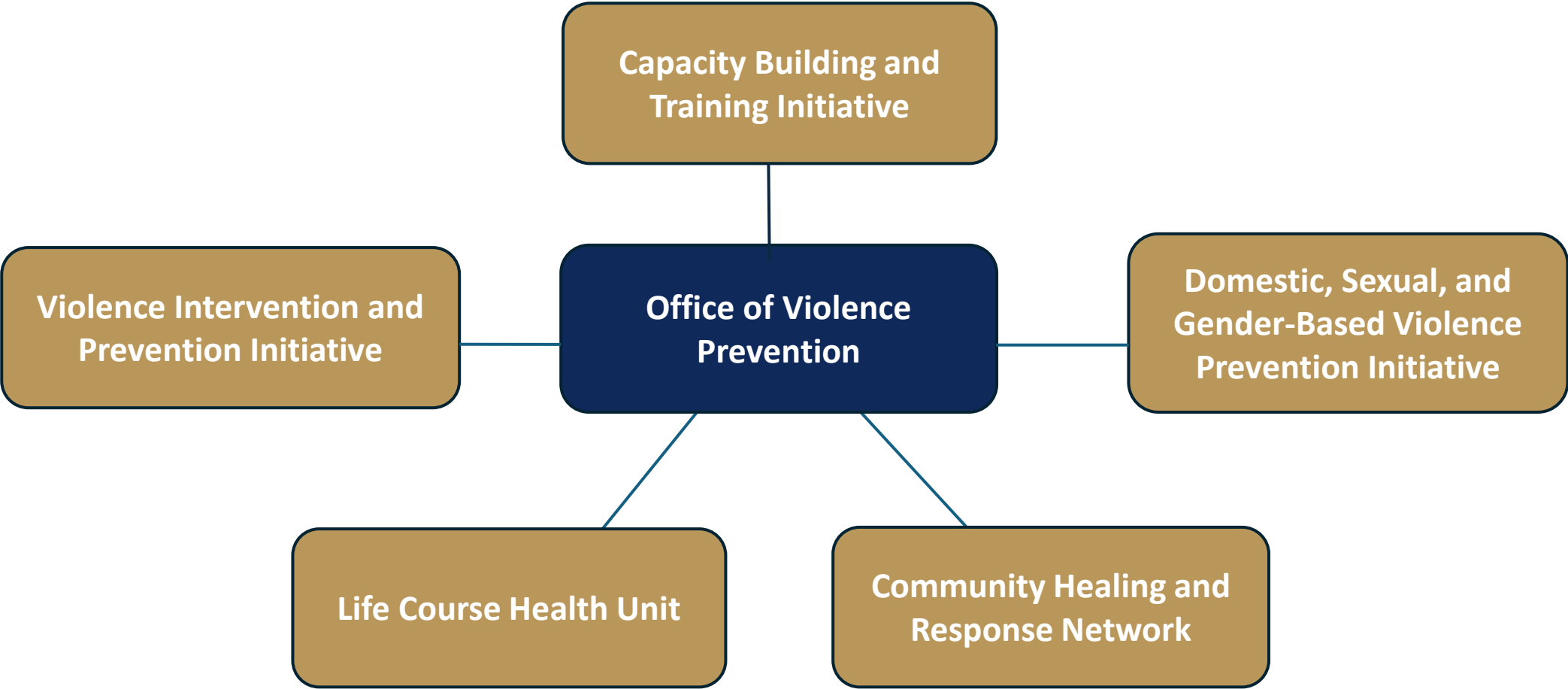
- **Focus on mental health:**

- Expanded behavioral health screening and referrals to expecting parents and parents of young children
- Early Childhood Mental Health program served 76 families
- School Based Health Centers provided behavioral health services to over 250 young people
- Mental Health Ambassadors program advanced peer-led mental health awareness

- **Improving Birth Outcomes:**

- Implemented the Fetal and Infant Mortality Review process
- Provided coordinated case management and home visiting services to over 1,747 pregnant and parenting families
- Provided families with doula support and trained over 100 community stakeholders in supporting families

# Office of Violence Prevention




# Domestic, Sexual, and Gender-Based Violence Initiative



**BOSTON PUBLIC HEALTH COMMISSION** **jdi**

**WIN OR LOSE,  
THERE IS NO  
EXCUSE FOR  
DOMESTIC  
VIOLENCE.**

Find help at [janedoe.org](http://janedoe.org)

 Domestic Violence Hotline  
(877) 785-2020  
Sexual Violence Hotline  
(800) 841-8371

Fostering the response to and prevention of domestic, sexual, and gender-based violence, supporting survivors, and challenging the systems that perpetuate violence.

- Preparing for increased risks tied to large-scale summer events
- Invested in early childhood settings as a prevention strategy
- Conducted survey to understand impacts of immigration climate on providers and clients

# Center for Behavioral Health & Wellness

- New focus on the social determinants of mental health
- Trauma-informed school transformation
- Enhancing mental health capacity for youth-serving organizations



# Community-Led Mental Health Crisis Response Pilot

- An alternative response model delivered by trained mental health crisis peer responders
- Designed to complement—not replace—other behavioral health and emergency response efforts and reflect our commitment to behavioral health equity, racial justice, and community trust
- RFP release Spring 2026, pilot launch Fall 2026
- Pilot design reflects extensive community engagement

# Behavioral Health Workforce Expansion



Franciscan  
Children's  
*So every kid can.*

**Franciscan Children's-  
Children's Wellness Initiative**  
June 2023-June 2026

- **10** additional BPS Schools provided CWI programming, Supported **13.4 FTE** school-based behavioral health clinicians and the supervision time provided by **6** supervisors
- Served **300+** BPS students to date



**UMass Boston- Transforming Boston  
Access to Mental Health**  
June 2023-June 2026

- **43** Mental Health Counselors, **142** Therapeutic Mentors, and **7** School Psychologists enrolled and supported by program via stipend
- **191** UMass students in Behavioral Health field supported via stipend
- **1,910** clients served, **1,000** youth by mid-2026



**Boston Area Health Education Center  
(BAHEC)**  
June 2024-June 2026

- **50** summer program participants
- **74** academic year program participants
- **124** students enrolled in program
- **100%** completion rate of enrolled participants

# Infectious Disease

- **Preparedness:**
  - Cutting-edge wastewater monitoring program
  - Measles exposures response
  - Summer 2026 preparedness efforts
- **Protecting Vaccination Access**
  - 27 community vaccination clinics
  - Partnering with BPS to provide student vaccinations
  - Enhanced communication and media strategies to combat misinformation
  - Coordination with state and national partners

**FREE  
VACCINE  
CLINICS  
IN BOSTON**

Get your flu and COVID-19 vaccines for free.  
No appointment necessary, walk-ins welcome.

Find dates, times, and locations at  
[BOSTON.GOV/VACCINE-CLINICS](https://boston.gov/vaccine-clinics)

**CITY of BOSTON** **BOSTON PUBLIC HEALTH COMMISSION** **Boston Centers for Youth & Families** **LEGACY CARE GROUP** **shaw's star**

# Community Initiatives Bureau

- **Supporting the Live Long and Well agenda**
  - Breathe Easy
  - Tobacco Control
  - Boston Healthy Child Care Initiative
- **Access to healthcare:** the Mayor's Health Line significantly expanded outreach and enrollment efforts, helping Boston residents get health insurance and access services.
  - 30% increase in health insurance enrollment
  - Engaging local social media influencers
  - Partnership with Age Strong for Medicare open enrollment

