

FY27 BUDGET

Docket #0733-0740, 0756 - Parks and Recreation, Parkman Fund





TEAM MEMBERS



CATHY BAKER-ECLIPSE

*Interim Commissioner & Director
of Design and Construction*



BRIAN SWETT

Chief Climate Officer



**DIANA FERNANDEZ
BIBEAU**

Incoming Commissioner



NATHAN HINCHLIFFE

Director of Maintenance



DARLENE BUFFORD

*Director of Human
Resources & Payroll*



TRACI LEE

*Director of Finance &
Procurement*



LUIS PEREZ DEMORIZI

*Executive Director of Franklin
Park*



FY26 ACCOMPLISHMENTS

By the Numbers - Recreation

- Hosted **3,108** youth at **5 free sports centers** in Dorchester, East Boston, Mattapan, and Roxbury and employed **267** youth.
- Hosted **355** individual Mayor's Cup games and matches giving 4,873 youth the opportunity to compete against their peers for the title of "Boston's Best" in softball, baseball, street hockey, ice hockey, flag football, soccer, tennis and cross country throughout the year.
- With the growing popularity of Archery, Recreation served over **288** youth and teens citywide and expanded to include **123** adults and seniors.
- Provided free winter, summer, and fall fitness classes to keep more than **7,215** Bostonians moving during **816** hours of virtual and in-person classes.
- Offered citywide recreational clinics and league games that brought communities together serving over **11,799** individual youth and adults.



FY26 ACCOMPLISHMENTS

By the Numbers - Trees

- Planted **1,986** new street trees in 2025
 - Planted an additional **386** trees in parks across the city
 - On track to maintain consistent planting numbers amid rising costs
- Completed the Pruning of **7,288** trees in 2025
 - Almost a **200%** increase compared to our past average of 2,500 trees a year through a once in a lifetime investment from IRA funding, enabling the Division to employ the **block pruning approach**.
 - Arborists now create work orders for entire blocks rather than addressing trees individually which allows crews to work more efficiently and reduce repeat visits
- Treated **1,504** mature ash trees in 2025 to continue to protect against Emerald Ash Borer
 - Treatment will be repeated to maintain efficacy
- Responded to and closed **9,090** urban forestry 311 requests in 2025
 - Including **2,252** tree emergencies, 90% which were closed within a 24 hr SLA period.





FY26 ACCOMPLISHMENTS

By the Numbers - Animal Care and Control

- Issued **13,356** dog licenses
- Issued **25** Kennel Licenses
- Responded to **9,516** calls for service and issued 1534 citations
- Held **10** low cost rabies clinics for cats and dogs
- Administered **935** free or low cost pet rabies vaccines
- Provided care for **1,011** cats and dogs and **31** small pets.
- Adopted **98** pets
- *Animal Control Officer Michael Stern* was designated the **2025 Massachusetts Animal Control of the Year**





FY26 ACCOMPLISHMENTS

Maintenance Highlights

- **Contract support** for our fountains and splash pads has increased the level of service of these iconic and essential heat resilience spaces. In the summer of 2025, **all 81 splash pads** were functional at the same time. Implemented an **ornamental fountain maintenance** contract covering 16 fountains citywide.
- Following the reacquisition of additional sites along the Muddy River, the department has successfully absorbed maintenance responsibilities and improved formerly unkept open spaces and actively maintained public assets.
- Established a new **green infrastructure contract** to support ongoing maintenance and expansion of resilient landscape infrastructure.
- Maintained funding and support for **essential field operations** supplies, including bags, marking paint, and ballfield chalk.





FY26 ACCOMPLISHMENTS

Completed Capital Projects

- **Harambee Park Cricket Fields**, Dorchester
- **Codman Square Park**, Dorchester
- **Walsh Playground**, Dorchester
- **Copley Square Park**, Back Bay
- **Franklin Park Bear Dens (Phase 1)**, Dorchester
- **Cutillo Park**, North End
- **Flaherty Playground**, Jamaica Plain
- **Murphy Playground Ball Field**, Jamaica Plain
- **Mattahunt Woods Urban Wild**, Mattapan
- **Dorchester Park Pathways**, Dorchester





FY26 ACCOMPLISHMENTS

Capital Projects in Construction

- **Billings Field**, West Roxbury
 - *Anticipated completion late summer 2026.*
- **Clifford Playground**, Roxbury
 - *Anticipated completion 2026.*
- **Ryan Playground**, Charlestown
 - *Anticipated completion 2027.*
- **Ringer Playground**, Allston
 - *Anticipated completion 2026.*
- **Commonwealth Ave Mall Kenmore Block**, Kenmore/Fenway
 - *Anticipated completion 2027.*
- **Bay Village Neighborhood Park**, Bay Village
 - *Anticipated completion 2026.*
- **Mary Ellen Welch Greenway**, East Boston
 - *Anticipated completion 2027.*





FY26 ACCOMPLISHMENTS

Acquisitions - 1.45 acres of new permanently protected open space

- **Odom Serenity Garden**, Dorchester/Mattapan
 - 0.14 acres
- **Sister Mary Veronica Park**, South Boston
 - 0.11 acres
- **West of Washington Family Park**, Dorchester
 - 0.22 acres
- **Codman Square Park**, Dorchester
 - 0.35 acres
- **43 & 45 Danube St (Winthrop Playground Addition)**, Roxbury
 - 0.14 acres
- **Union Street Park**, Downtown
 - 0.49 acres



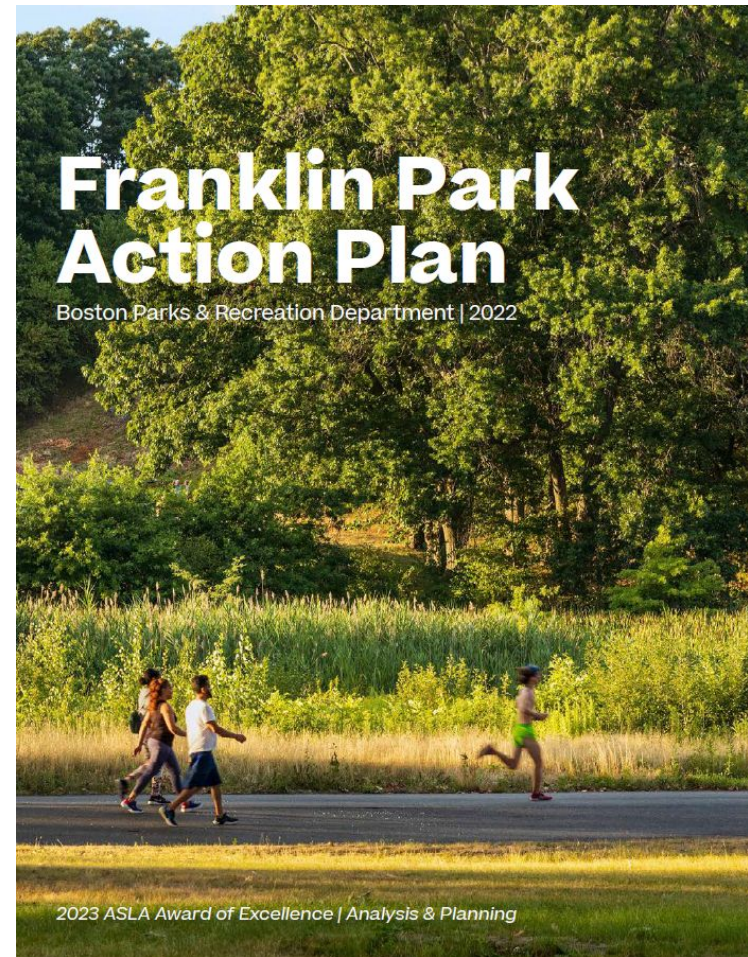
FRANKLIN PARK

Multigenerational Investment in Boston's Largest Park

As a result of the 2022 Franklin Park Action Plan, the city and its partners have taken great strides to invest in Boston's largest public park. Investments in Franklin Park can be categorized into a few buckets:

- Dedicated park administrator and maintenance staff
- Capital projects
- Dedicated natural areas crew
- Greater interagency collaboration
- Franklin Park Maintenance Trust

In FY25-FY26, the city allocated 2 maintenance crews and a 2-person natural areas specific to Franklin Park, hired the inaugural Executive Director of Franklin Park; and investment in staff resources. Along with kicking off construction projects at the Bear Dens, Tennis Courts and Picnic Grove, BPRD has been working to develop park policies and investment strategies that help us get closer to achieving the ambitious goals set forth by the Franklin Park Action Plan.





FRANKLIN PARK

Capital Projects

Franklin Park Tennis Courts *Anticipated completion 2026.*

- Expand the tennis facility to 5 courts with lighting, spectator seating. Picnic Grove improvements include accessible tables, grills, drinking fountains, shade structures and new trash bins.

Bear Dens Phase 1 *Anticipated completion 2026*

- Phase 1 project at the Bear Dens is an initial make-safe project masonry restoration, steel cage restoration and improvements to paved surfaces.

Circuit Drive Traffic Calming Phase 1 *Construction begins late 2026*

- Currently in final design, Phase 1 of traffic calming along Circuit Drive will add safe crossing for walkers, runners and cyclists.

Overlook Ruins @ Elma Lewis Playhouse in the Park *Design continues in 2026*

- Currently the project is in conceptual design for the preservation and renovation of the overlook ruins to rehouse the Elma Lewis Playhouse in the Park.

Franklin Park Wayfinding, Signage Mapping and Cross Country Track Redesign *New project in FY27-31*

- This project will assess and develop a cohesive park signage, pathway and trail system mapping, and redesign the cross country trail system



FRANKLIN PARK

Coordination and Special Projects

Franklin Park Natural Areas Crew

- Over the past year, the 2-person crew dedicated to the natural areas of Franklin Park have worked tirelessly to help eradicate invasive plant species in the park. Their endeavor combines in-house and contracted work with capital project momentum to help prioritize problem areas. The crew also runs a number of community events where community volunteers join in the effort.

Franklin Park Tenants and Operators Group

- Given the complexity of uses, along with the number of agencies operating within Franklin Park, It is important to establish interagency coordination. The Franklin Park Tenants and Operators Group meets monthly to discuss issues, come up with solutions to daily operations at the park. The group is also focused on the shared commitment of developing standards of care within the park and greater collaboration. Members include various agencies within BPRD, BPS, Franklin Park Zoo, and the Shattuck Hospital.



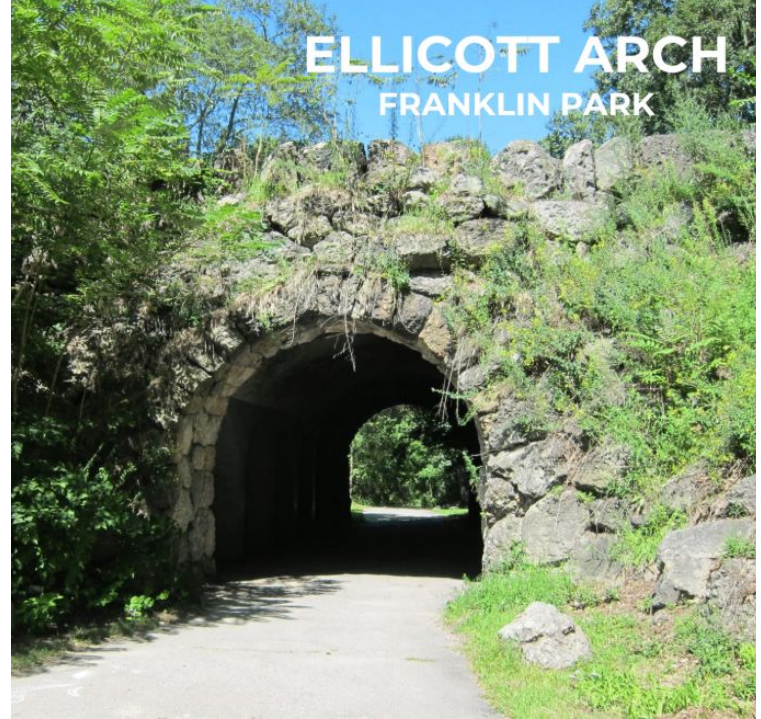


FRANKLIN PARK

Other Revenue: Franklin Park Maintenance Trust

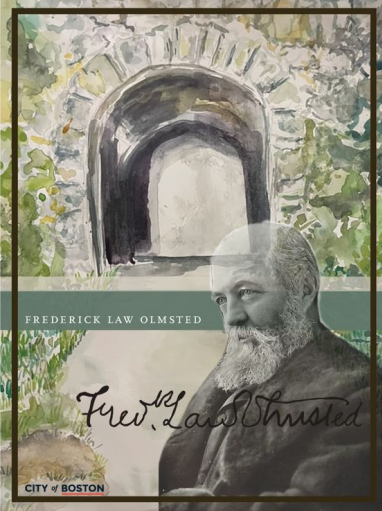
Franklin Park Enhanced Maintenance

- The park's dedicated maintenance staff is composed of 2 crews. The crews mow lawns, remove leaves, snow, and litter. However, Their time and efforts can often be overshadowed by the vastness of Franklin Park. The Franklin Park Maintenance Trust is a source of supplemental funding specific to enhancing our current maintenance operations.
- Through the Fund, BPRD has been able to repave some of its pathways, repairs historic masonry, remove large stands of invasive species, and drain system cleaning.
- Over the course of this coming Fiscal Year, The Franklin Park team will be developing ongoing, annual contracts to help repair high-use landscapes in the park. We will also be working on a multi-year effort to enhance site furnishings and replace trash receptacles to rodent resistant barrels etc.



FRANKLIN PARK

Icons of Franklin Park Poster Competition



In the Summer of 2025, the city, in partnership with the Franklin Park Coalition and the Boston Society of Landscape Architects put out a call for artists to put their best interpretation forward in a poster series of what Franklin Park meant to them. By August, we 55 submissions. A total of 5 artists were selected as winners in 3 categories: Emerging artist (ages 14-24), Original Series and People's Choice Award. The people's choice award drew nearly 1,300 votes.



FY27 OPERATING BUDGET

Highlights

- Sustain high quality spaces, programs, and maintenance by re-evaluating priorities and leveraging outside funding
- Continue contracted services to support for our ornamental fountains and splash pads, green infrastructure maintenance, and other key services.
- Maintain funding and support for essential field operations supplies, including bags, marking paint, and ballfield chalk.
- Temporarily shift some funding from the FY27 Operating Budget to external funding sources
- Leverage outside funding to sustain arts and recreational programs
- Consider alternate processes with lower upfront costs (i.e. seeds instead of plugs, etc)





FY27-31 CAPITAL BUDGET

Priority Projects for FY27 Construction

McKinney Playground

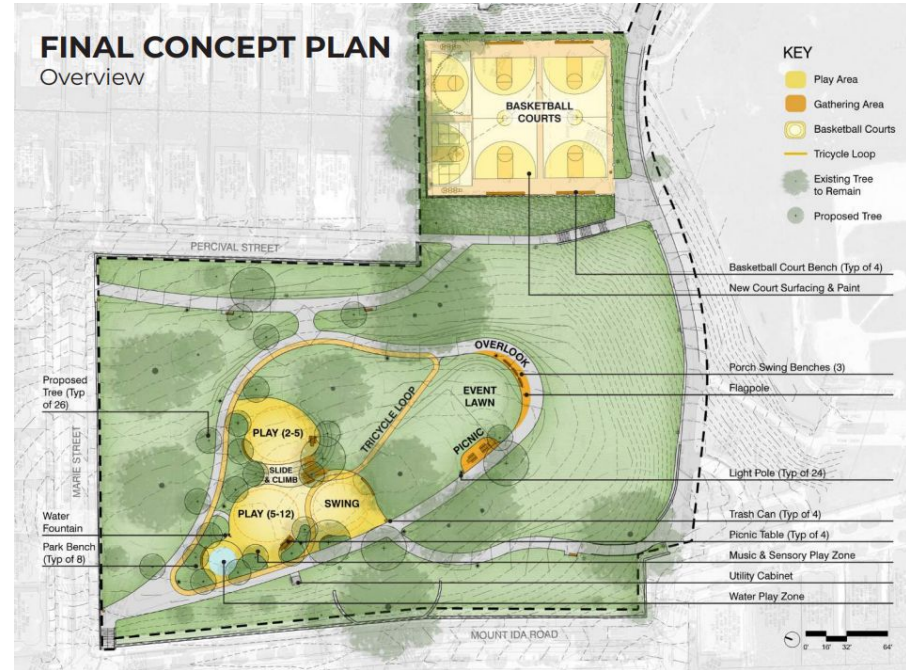
- The improvements will feature a new and improved playground, a splash pad, natural turf athletic fields, sports lighting, a perimeter walking loop and more.

McLean Playground

- Improvements include green infrastructure, tree improvement, basketball court, playground, and seating

Ronan Park

- The renovations will focus on the upper terrace, including a new playground, accessible walkways, site furniture, and improvements to the water play area, drainage, and entrances.
- Basketball court improvements will also be included.





FY27-31 CAPITAL BUDGET

Priority Projects for FY27 Construction

Moakley Park

- Begin implementation of recreational improvements at Moakley Park to improve playability of fields and athlete experience

Arnold Arboretum Poplar Gate Path Improvements

- Improvements to the path surface, used primarily by pedestrians, by resurfacing the asphalt and uncovering the hidden historic cobblestone gutters.

Ceylon Park

- This will include improvements to the basketball courts, updated play areas, new lighting and improved accessibility.





FY27-31 CAPITAL BUDGET

New Projects

- **Dorchester Park Infield**, Dorchester - Ballfield improvements
- **Arnold Arboretum Hunnewell Path**, Jamaica Plain - Pathways and accessibility
- **East Boston Memorial Park Playground**, East Boston - Playground and splash pad improvements
- **Forbes Street Play Area**, Jamaica Plain - Playground improvements
- **Public Garden Bridge**, Back Bay - structural assessment
- **Chandler Pond Phase 2**, Brighton - ecological restoration
- **Franklin Park Wayfinding and Cross Country Course**, Roxbury - trails and signage





GOALS

Highlights

Deliver Critical Services and Capital Projects in a Constrained Fiscal Environment

- Support departmental leadership in advancing strategic goals, executing priority initiatives, and maintaining momentum on ongoing projects

Continue Core Services

- Maintain essential park operations, maintenance and public programming

Prioritize High-Impact Investments

- Direct funding toward critical operational, infrastructure, and community needs

Improve Efficiency & Cost Management

- Maximize existing resources and identify operational savings where feasible.


Advance Strategic Priorities

- Align funding with equity, climate resilience, and departmental initiatives.





Thank You!



PARKS AND RECREATION

