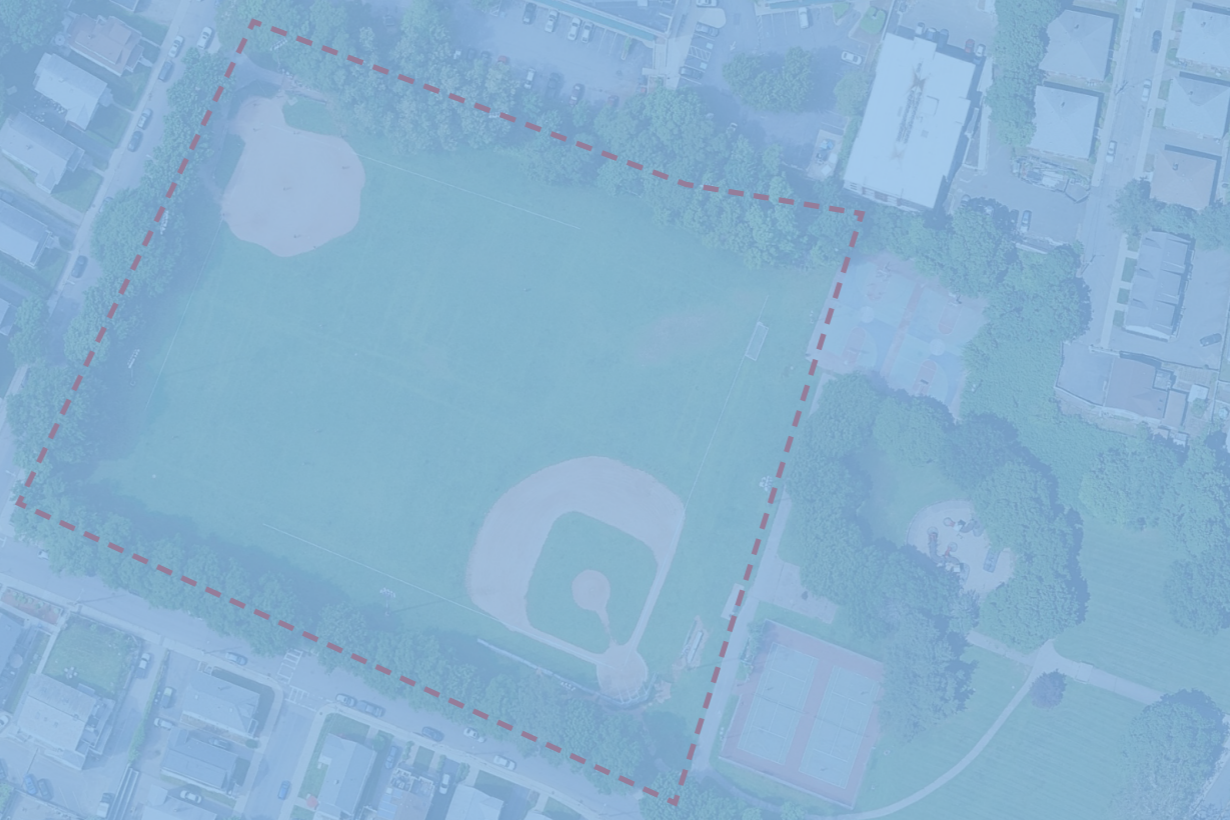


Improvements to **ROGERS PARK - PHASE 1**



SASAKI

May 12, 2026
Boston Parks and Recreation



MEETING RECORDING



The Boston Parks and Recreation Department will be recording the meeting and posting to our project webpage for those who are unable to attend the Zoom meeting live.

It is possible that participants may also be recording the meeting with their phones cameras or other devices. If you do not wish to be recorded during this meeting, please keep your microphone muted and camera off.

*Please share with your neighbors and friends,
<https://shorturl.at/5Ncti>*

VIRTUAL MEETING ETIQUETTE

We want to ensure this conversation is a pleasant experience for all and that all community members/stakeholders are comfortable sharing their comments, questions and feedback.

Please be respectful and mindful of each other's time when asking questions/ providing comments, so that all attendees are able to participate in the meeting.

Keep questions/ comments project-specific and not personal to yield solution-driven discussion.

Please wait until all attendees have had the opportunity to ask a question/ provide a comment before providing additional questions/ comments.

*You can always set up a conversation with **Nellie Ward**, nelle.ward@boston.gov, to further discuss the project or process.*

ZOOM TIPS

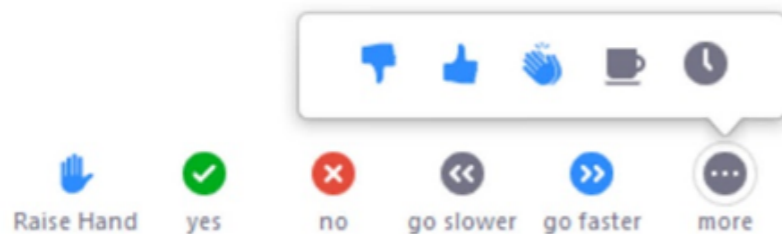
Here is how you can participate during the question and answer part of the presentation.

DURING THE PRESENTATION:



VIA WEB:

Turn video on / off.



To use these non-verbal options click on participants (bottom of screen); these options will pop up in side bar.

DURING THE Q&A:



JOINING VIA PHONE?

Use *9 to raise hand to ask for audio / video permission to ask questions or provide comments.



VIA WEB:

Chat to ask questions / comments or provide responses to poll questions



Raise hand to ask for audio / video permission to ask questions or provide comments.

AGENDA

1

PROJECT TEAM INTRODUCTION

2

PROJECT OVERVIEW

3

PRESENTATION

4

LISTENING & DISCUSSION

5

CLOSING REMARKS & NEXT STEPS

PROJECT TEAM

NELLIE WARD

CITY OF BOSTON | PROJECT MANAGER
nelle.ward@boston.gov or 617-635-4505

MY'KEL MCMILLEN

CITY OF BOSTON | BPRD COMMUNITY OUTREACH COORDINATOR
corey.mcmillen@boston.gov or 617-201-1294

JENNIFER ROBERTS

CITY OF BOSTON | OFFICE OF NEIGHBORHOOD SERVICES
jennifer.roberts@boston.gov or 617-635-4517

ANDREW GUTTERMAN

DESIGN CONSULTANT | SASAKI

KIRA SARGENT

DESIGN CONSULTANT | SASAKI



PROJECT TEAM



Andrew Gutterman
*Principal
Landscape Architect*



Kira Sargent
*Project Manager
Landscape Architect*



Trey Sasser
*Sports Specialist
Civil Engineer*



Ronald W. Buia, Inc.
Electrical Engineer



Bartlett Tree Experts
Arborist



Merrill, Inc.
Surveyor

Project Overview





City of Boston
Priorities

Safety Guidelines+
Regulatory
Guidelines

**PARK
DESIGN**

Parks + Recreation
Goals

Community
Input

CITY OF BOSTON PRIORITIES

A city that is:

- **Delivering Exceptional Constituent Services**
- **Green and Growing**
- **Family Friendly**
- **Closing the Racial Wealth Gap**
- **Healthy and Safe**

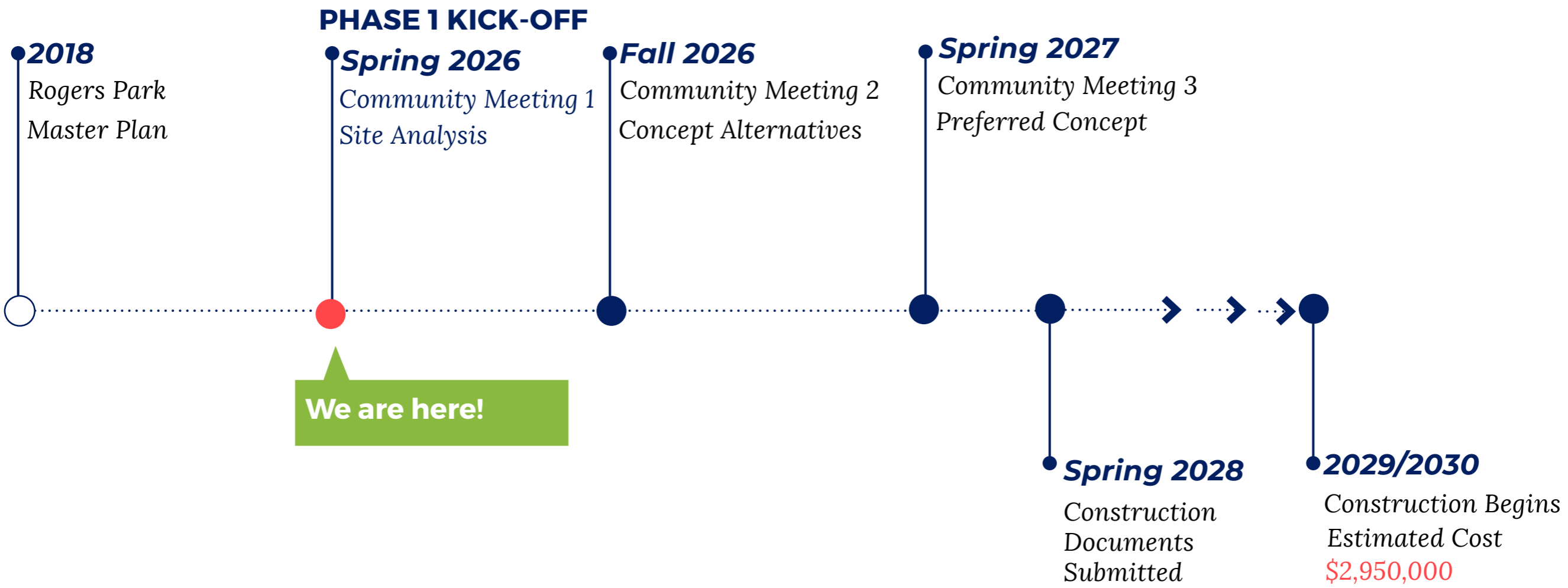


PARK & RECREATION GOALS

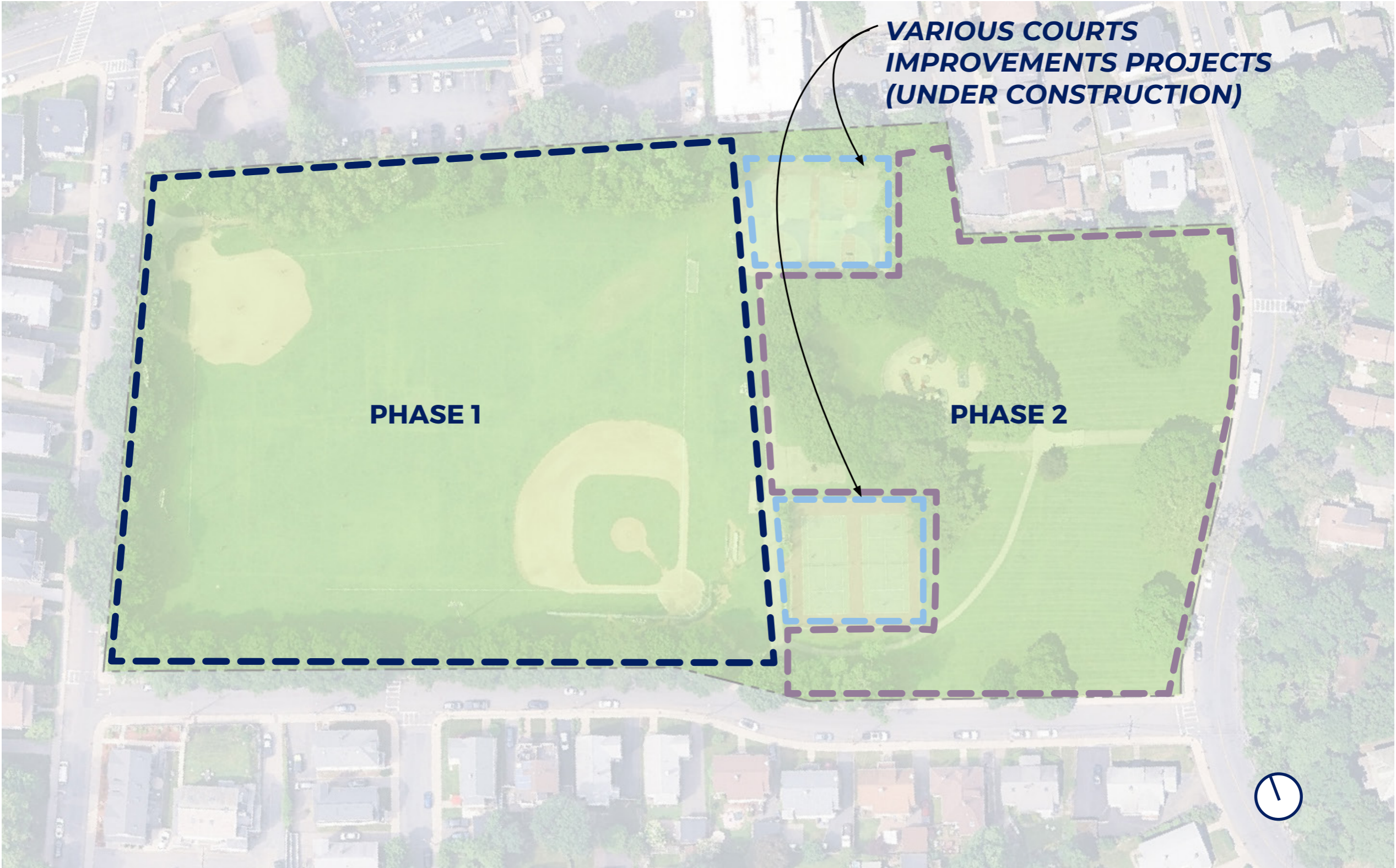
- **Accessible and available to all**
- **Diverse, balanced, and efficient mix of uses**
- **Meaningful and inclusive community engagement**
- **Adaptive and resilient landscapes**
- **Promote connections**



PROJECT SCHEDULE & FUNDING



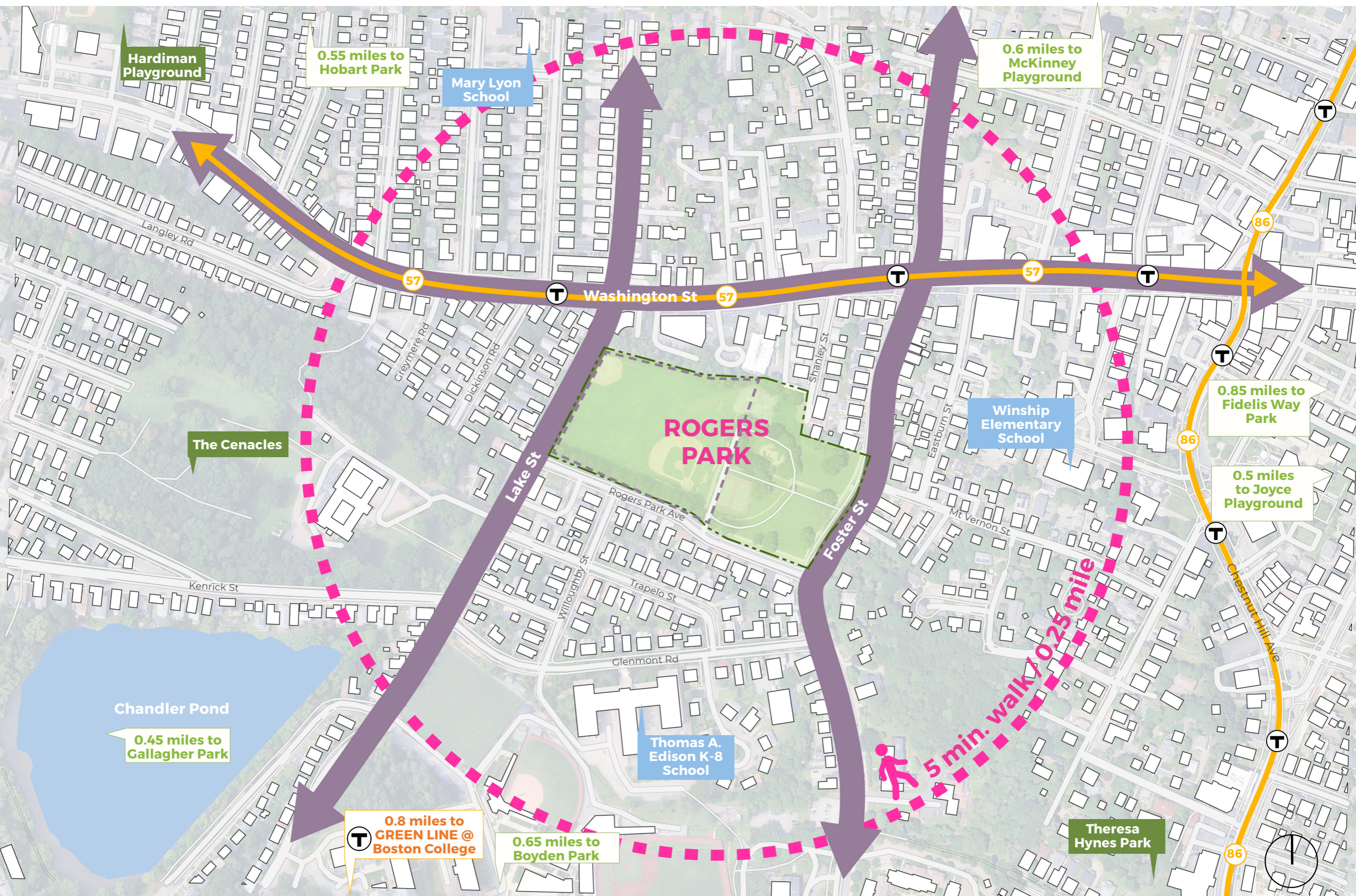
PROJECT PHASING



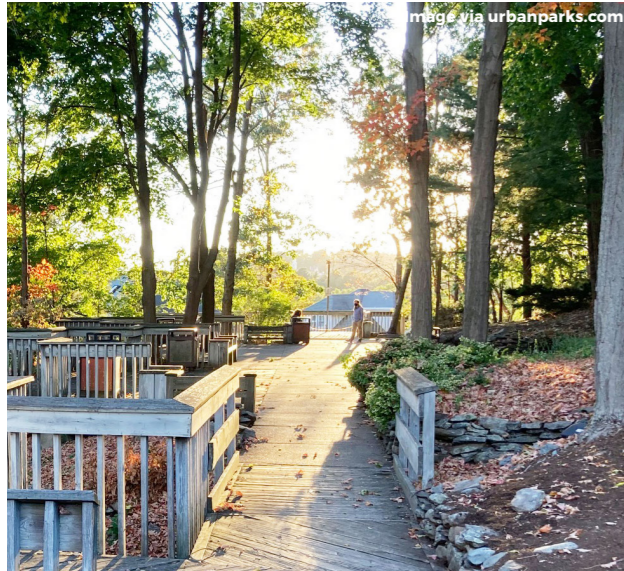
Site Analysis



Neighborhood Context and Connectivity



Context - Neighborhood Green Space



Theresa Hynes Park

8 minute / 0.4 mile walk
Scenic & Passive Space



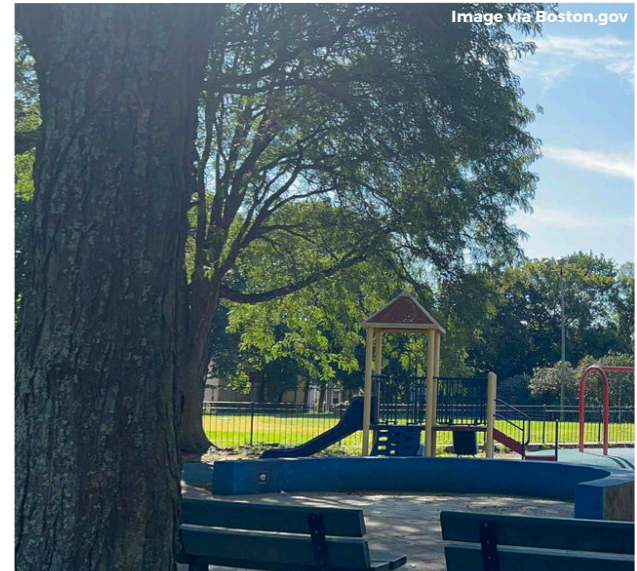
Fidelis Way Park

17 minute / 0.85 mile walk
Basketball (2), Playground, Passive, Walking Trail



Joyce Playground

10 minute / 0.5 mile walk
Basketball, Playground, Passive



Hardiman Playground

8 minute / 0.4 mile walk
Basketball, Baseball, Playground, Dog Park (*future renovation)



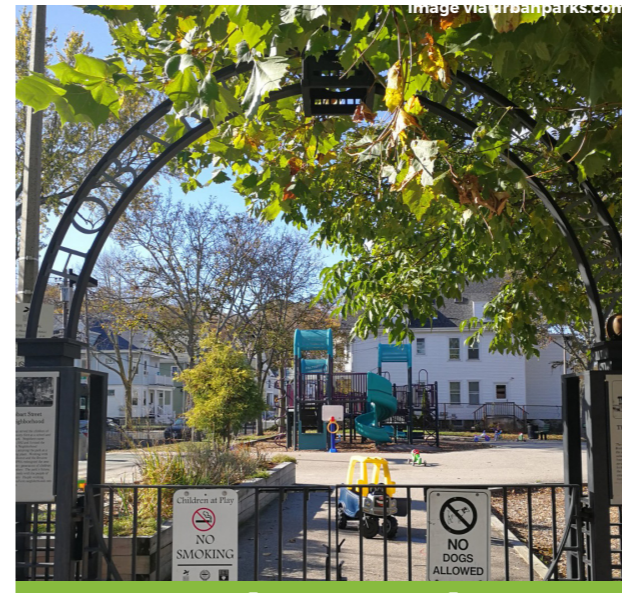
Boyden Park

13 minute / 0.65 mile walk
Passive



McKinney Playground

12 minute / 0.6 mile walk
Baseball, Softball(2), Multipurpose Field, Basketball, Street Hockey, Playground



Hobart Park

11 minute / 0.55 mile walk
Basketball, Playground, Passive



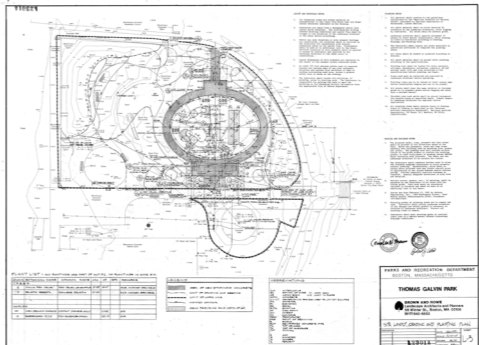
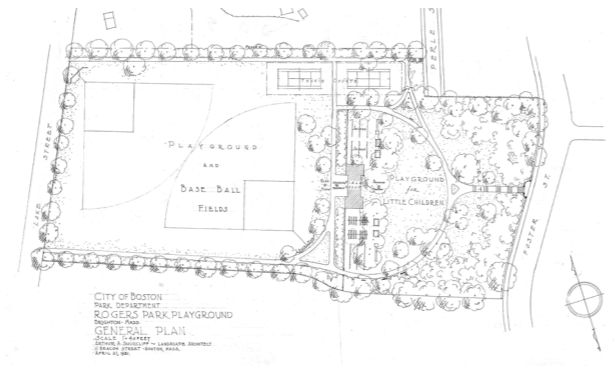
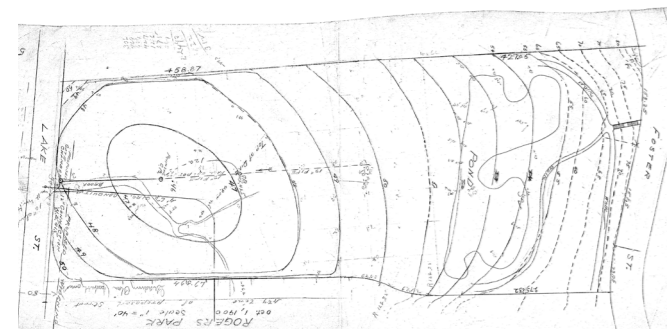
Gallagher Park

9 minute / 0.45 mile walk
Walking Trail, Pond, Passive

*Walk times based on a 20 minute mile pace

Context - Renovation Timeline

A longstanding community asset



● **Park Constructed**
Known as Thomas Galvin Park

● **Redesign**
Added first Tennis Court

● **Renovation**
Playground & added Tennis courts

● **Renovation**
Current Playground

● **Courts Renovation**

1899

1917

1931

1971

1975

1991

1997

2006

2008

2026

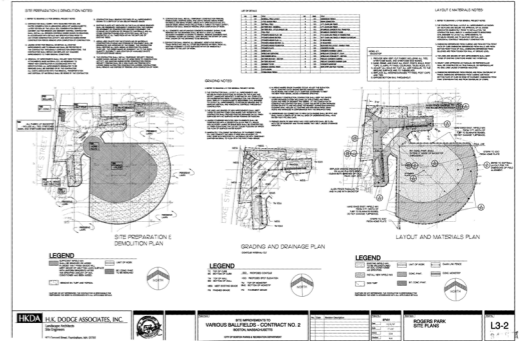
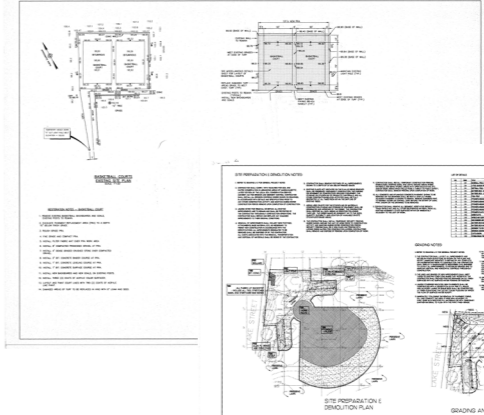
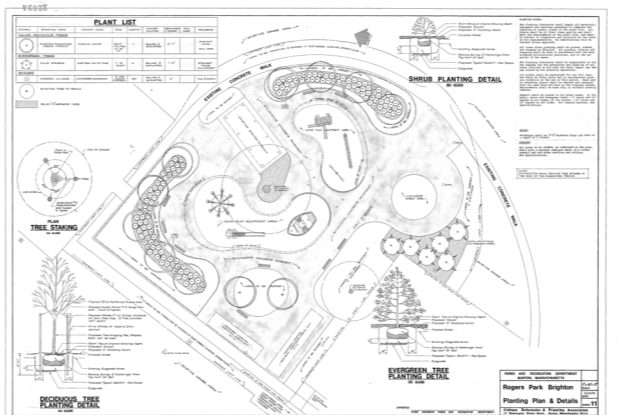
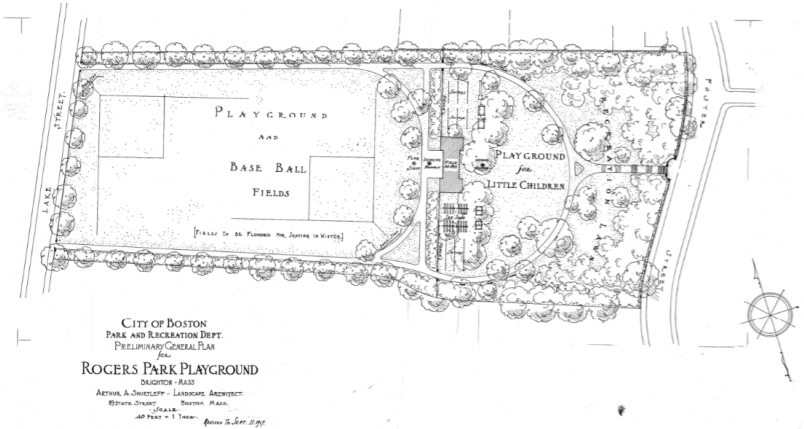
● **Redesign**
Field house, ball fields, playground in 1917 Arthur Shercliff plan

● **Renovation**
Walks, Stairways and Fencing

● **Renovation**
Playground & Field House Demolition

● **Renovation**
Softball Field & added basketball courts

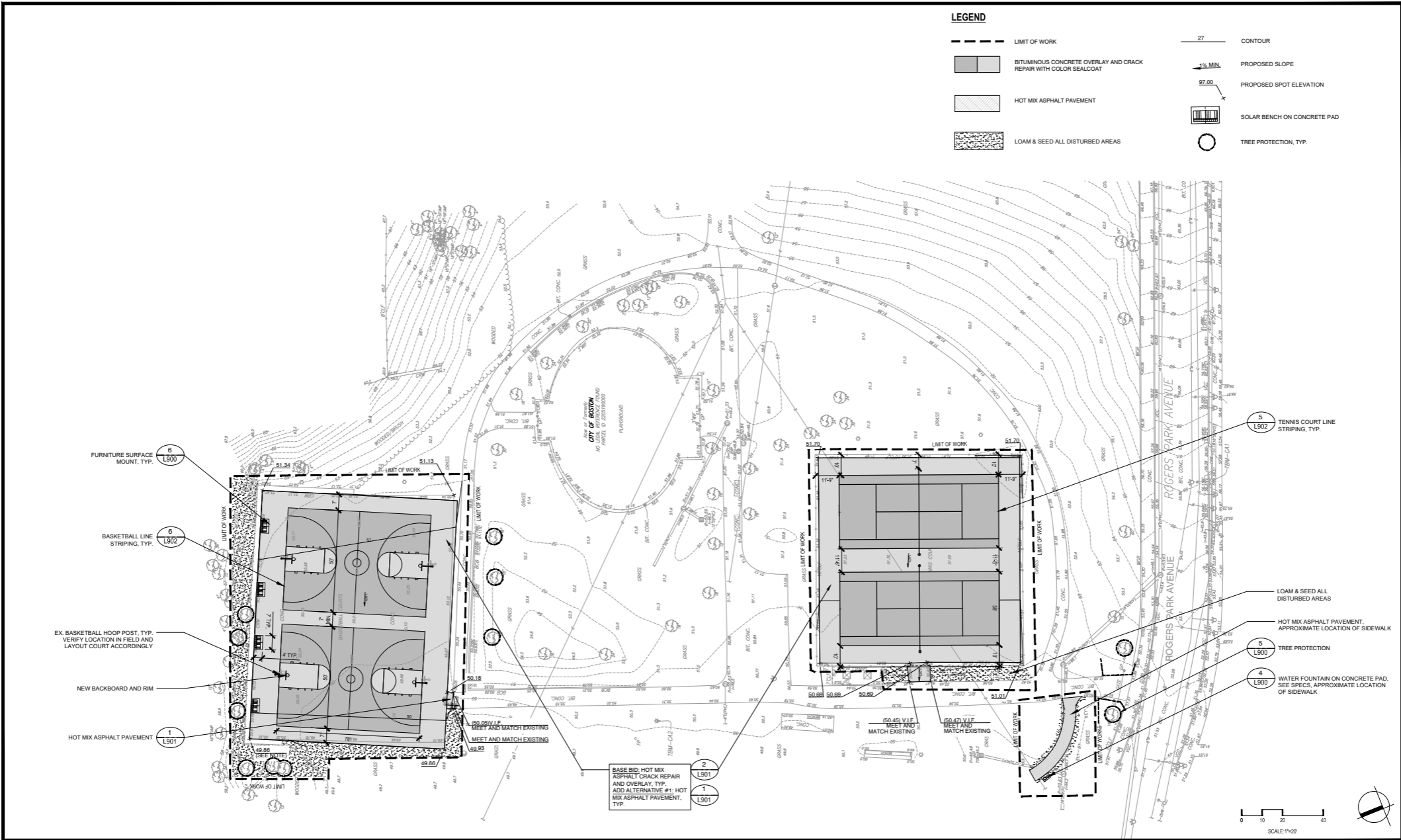
● **Tennis Court Renovation**



Context - Renovation Timeline

Tennis and Basketball Renovations

2026 - ONGOING



	Prepared By:		No.	Date	Revision	Project Name: Improvements to Various Courts, City Wide	Project No. CPR25070 Date: 08/25/2025 Scale: AS NOTED Drawn: TF Checked: FD	Sheet Name:	ROGERS PARK LAYOUT, MATERIALS, & GRADING PLAN	Section: L202
	Consultant Project No. ENG24-1626		Approved By:	Date:	Scale:			1"=20'		

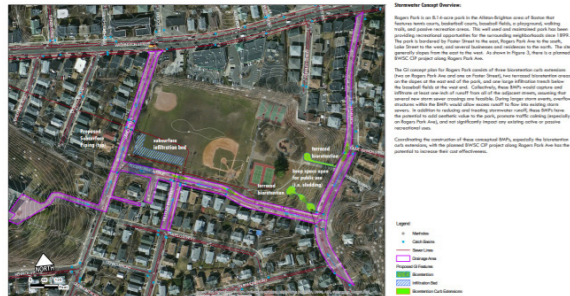
Context - City Planning

Comprehensive planning for the future

2016

BWSC Stormwater Best Management Practices Recommendation Report

PROPOSED STORMWATER CONCEPTS FOR ROGERS PARK



CH2M HILL



Imagine Boston 2030

A city wide plan for city growth through 2030

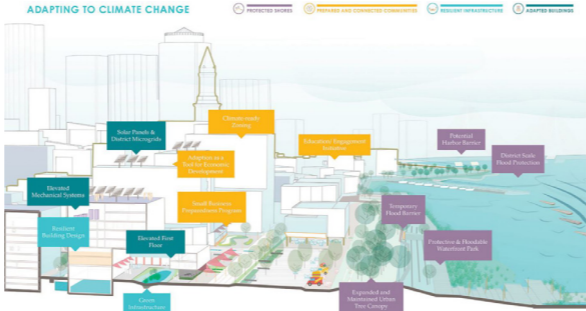
2017



Rogers Park Master Plan

A plan for park-wide renovations, divided into multiple phases

2018



Climate Ready Boston

A city-wide resilience roadmap

2023



Boston Open Space Plan 2023-2032

Comprehensive plan for Boston's open spaces

Community Use - Pulse Check Survey Results

Conducted December 2025 to April 2026

What do you enjoy most about the park?

Basketball
Pickleball
Baseball
Softball
Tennis



Community
Dog Friendly Park
Open Green Space

Walking
Sledding
Sitting & Reading



Community Use - Pulse Check Survey Results

Recommended Improvements

“Improve what’s here – but don’t change the character of the park.”

Bathrooms **Lighting**

Walking Paths



Court Improvements

Benches

Field Upkeep

Maintenance

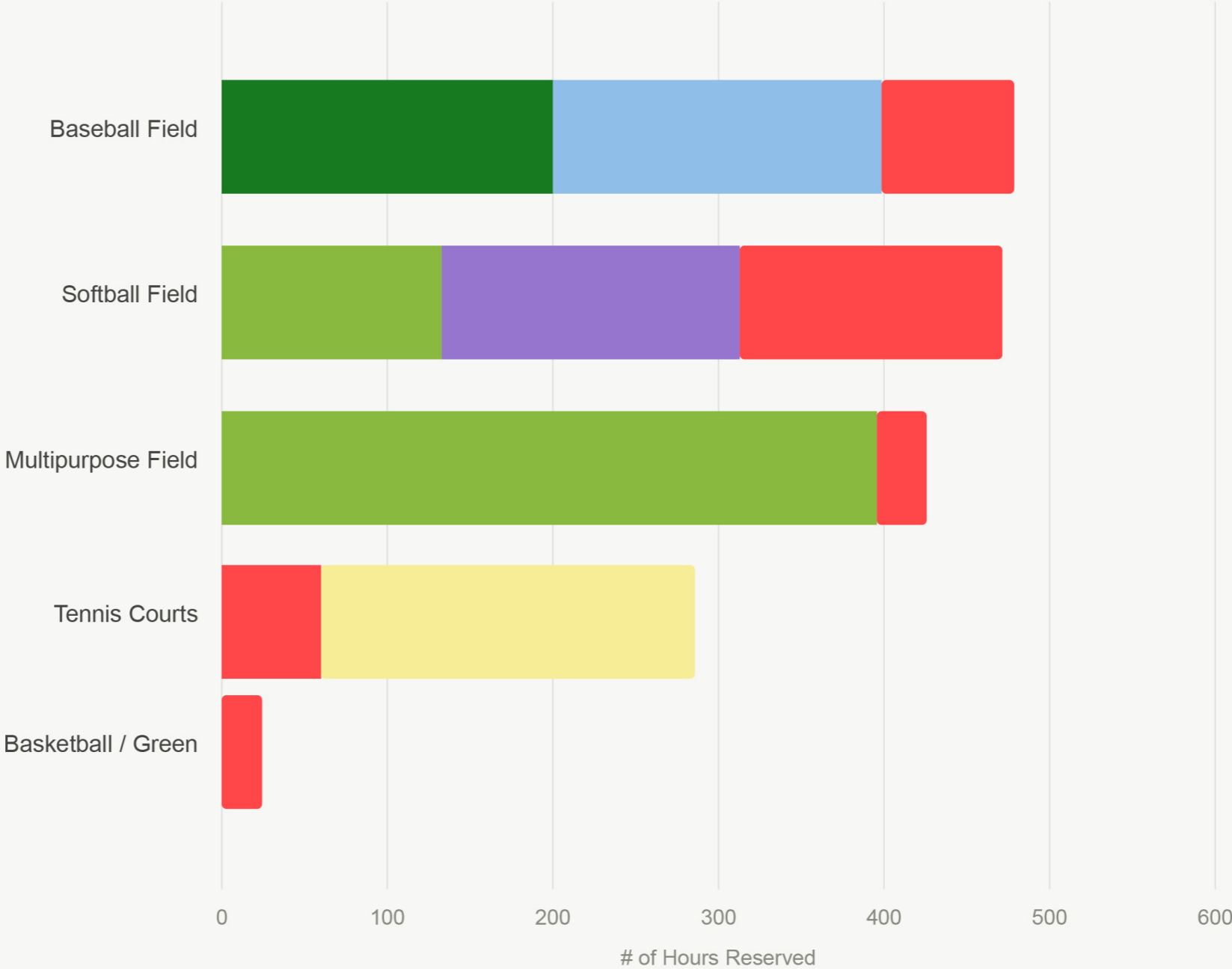
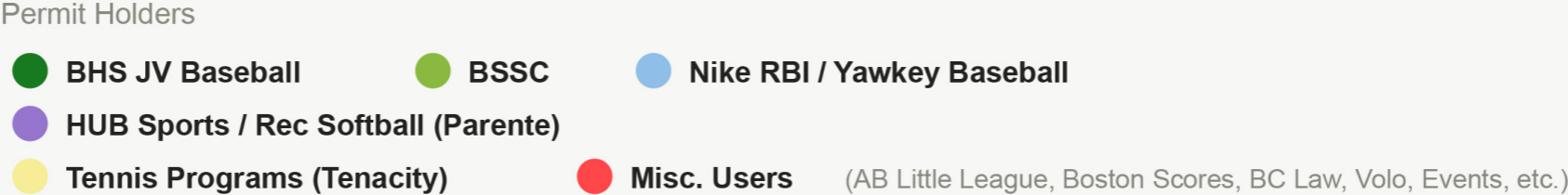
Update Amenities

Dog Area



Community Use - Permit Holder Analysis

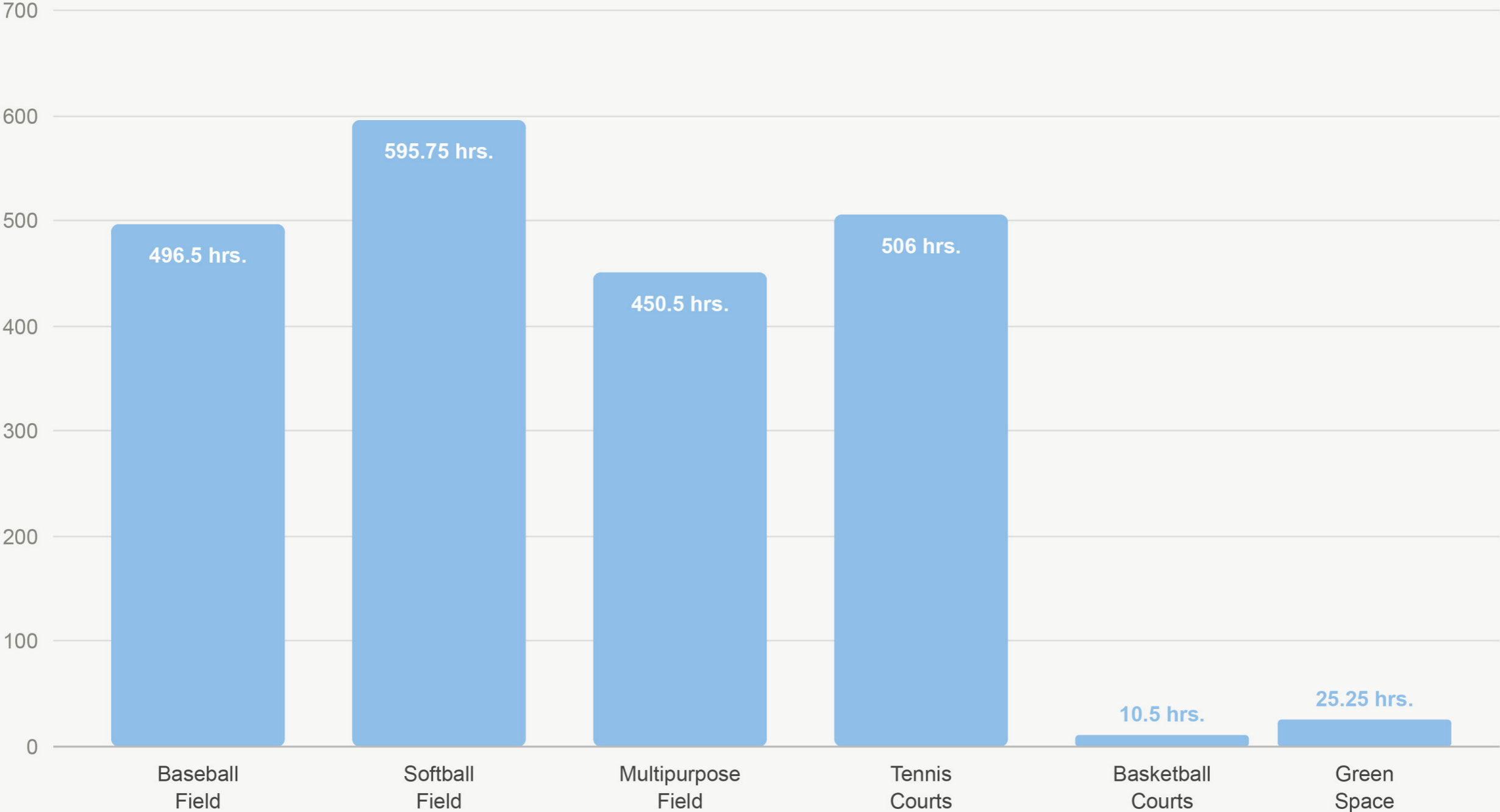
2025 Athletic Programming



Community Use - Permit Holder Analysis

2025 Athletic Programming

Total # of Hours Reserved Per Facility (2025)



Tree Assessment

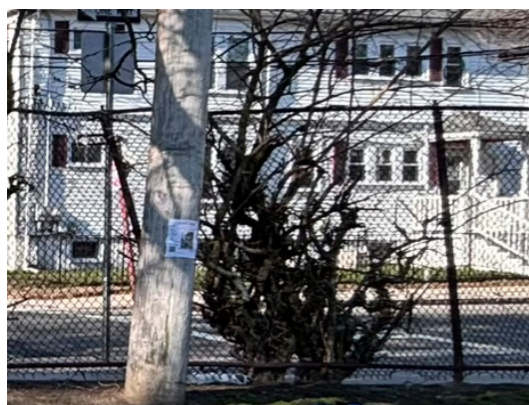
Along the north slope, many trees are invasive, in poor condition, or overgrown.



1 Good condition perimeter trees Lake St. and Rogers Ave.



2 Good, fair, and poor condition trees along northern slope



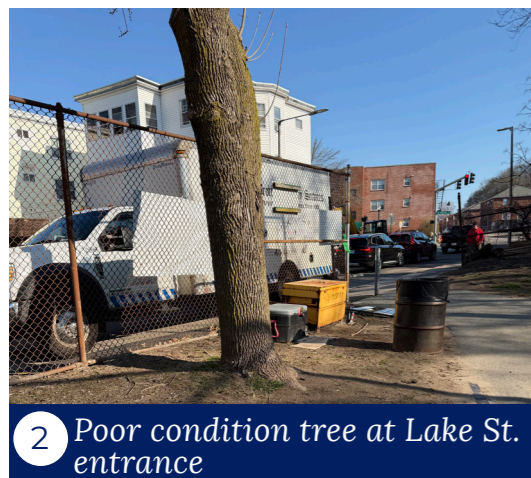
3 Poor condition tree grown into fence



Tree Survey Conducted Winter 2026

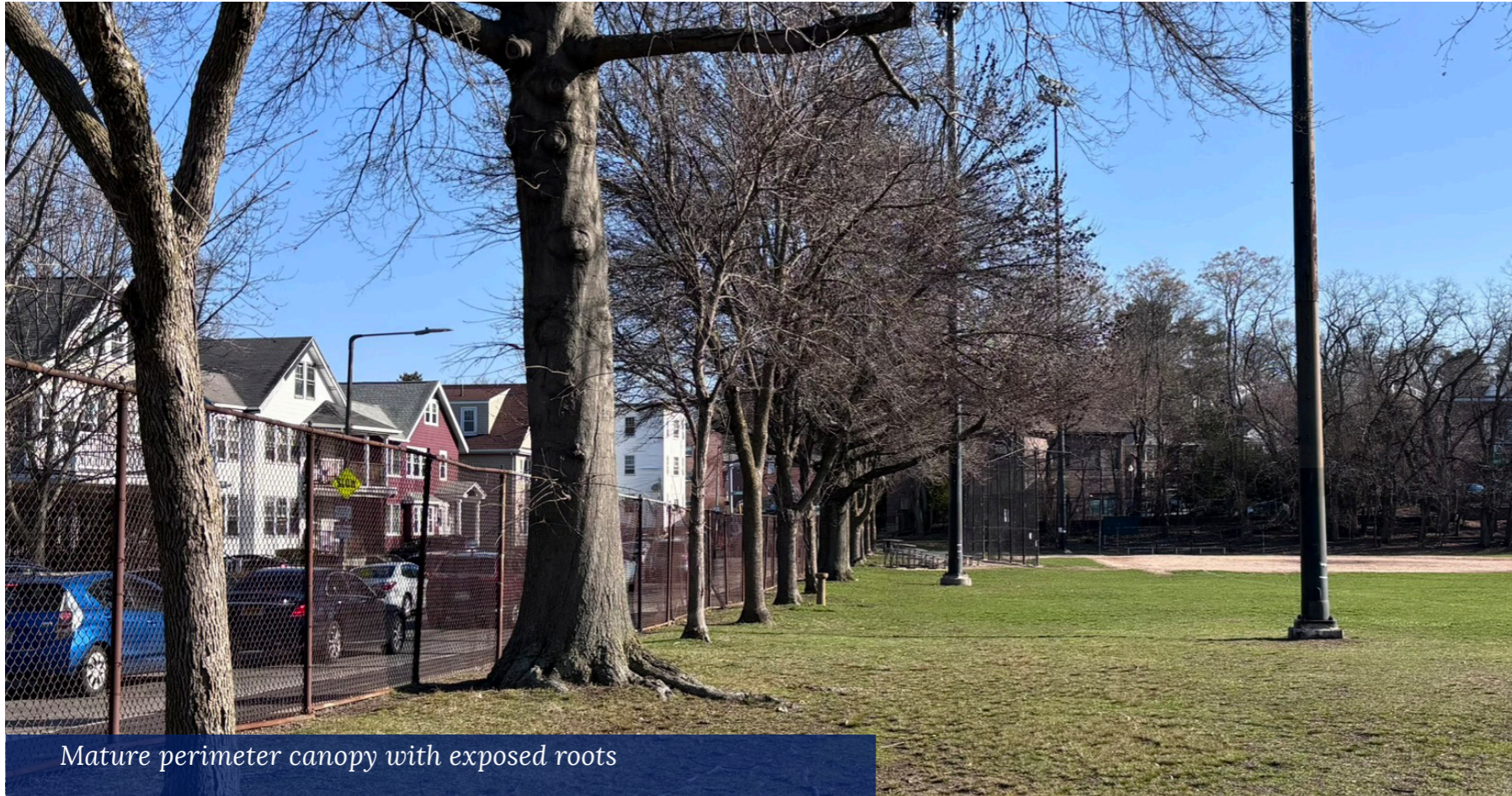
Tree Assessment

Some trees need pruning, and some trees require removal

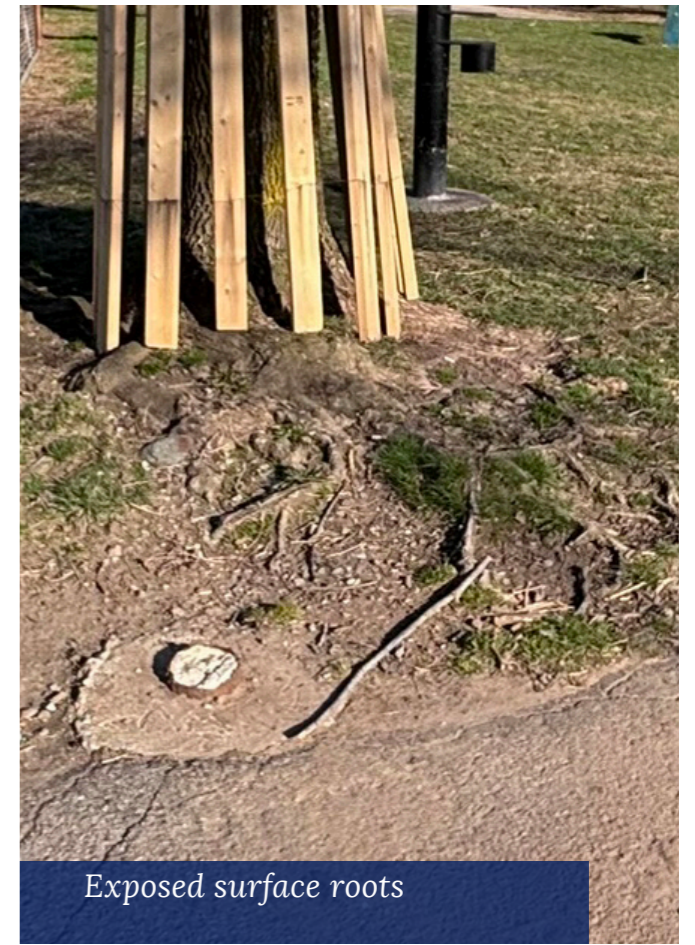


Tree Assessment

Perimeter path will have to navigate existing trees



Mature perimeter canopy with exposed roots



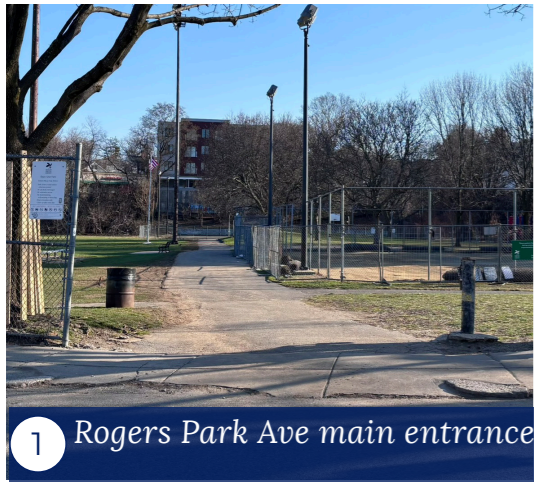
Exposed surface roots



Vegetation encroaching on field

Entrances and Circulation

Entrances on Lake St. and Rogers Park Ave. have worn materials and accessibility issues



Entrances and Circulation

Paths connecting the two main entrances to the fields are limited and worn. There is no circulation around the field.



Entrances and Circulation



Informal entrance - North Slope



Rogers Park Ave secondary entrance with Step / not aligned with crosswalk



Rogers Park Ave poor surface condition

Fences and Edges

Fencing and edges around the fields are primarily tall, poor condition chainlink fence



Fences and Edges



Sidewalk condition & Tree fence conflicts



Drainage, Ponding, & Erosion

The field is currently shaped like a bowl, collecting water from surrounding slopes. Compaction and erosion are evident.



1 Grades pitch toward center of field, causes ponding



2 Compacted, bare soil increases runoff to paths and field



3 Infield sand washing out over worn down edges



Drainage, Ponding, & Erosion



Uneven pavement causes ponding



Areas of old asphalt create bare patches, erosion, and uneven ground



Washout from baseball field



Desire paths compact soil and prevent lawn growth, causing high traffic areas to become dirt and mud prone.



Lighting

Full replacement is recommended for all lights and equipment.



Lighting

Full replacement is recommended for all lights and equipment.



Aging light poles and bases recommended for full replacement



Adjacent street lighting



Electrical Cabinets recommended for full replacement

Amenities

Amenities are concentrated around the two main entrances and backstops.



1 Team benches at backstop



2 Park benches are in good condition



3 Trash Receptacle



Amenities

Amenities are concentrated around the two main entrances and backstops.



Amenities at main Rogers Ave entrance could be arranged to make a more welcoming experience



Amenities are not connected to paths



Some amenities need larger or higher concrete pads for access



Non-functional water fountain

Athletic Fields

Softball, Baseball, and Multipurpose fields overlap



Athletic Field Amenities



Spectator bleachers and team bench without paved path



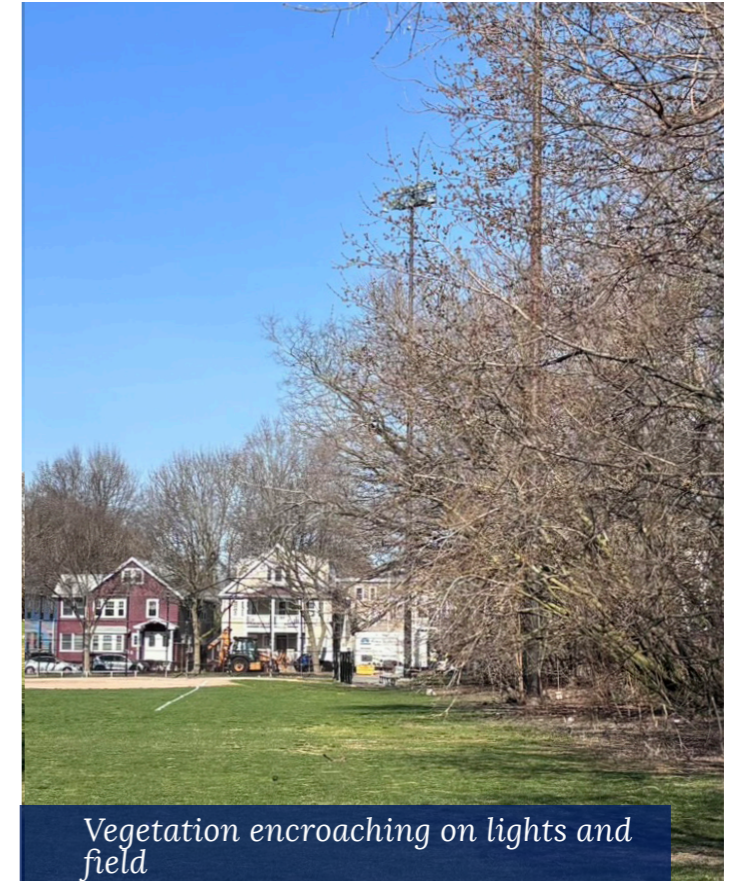
Softball Backstop



Old Scoreboard



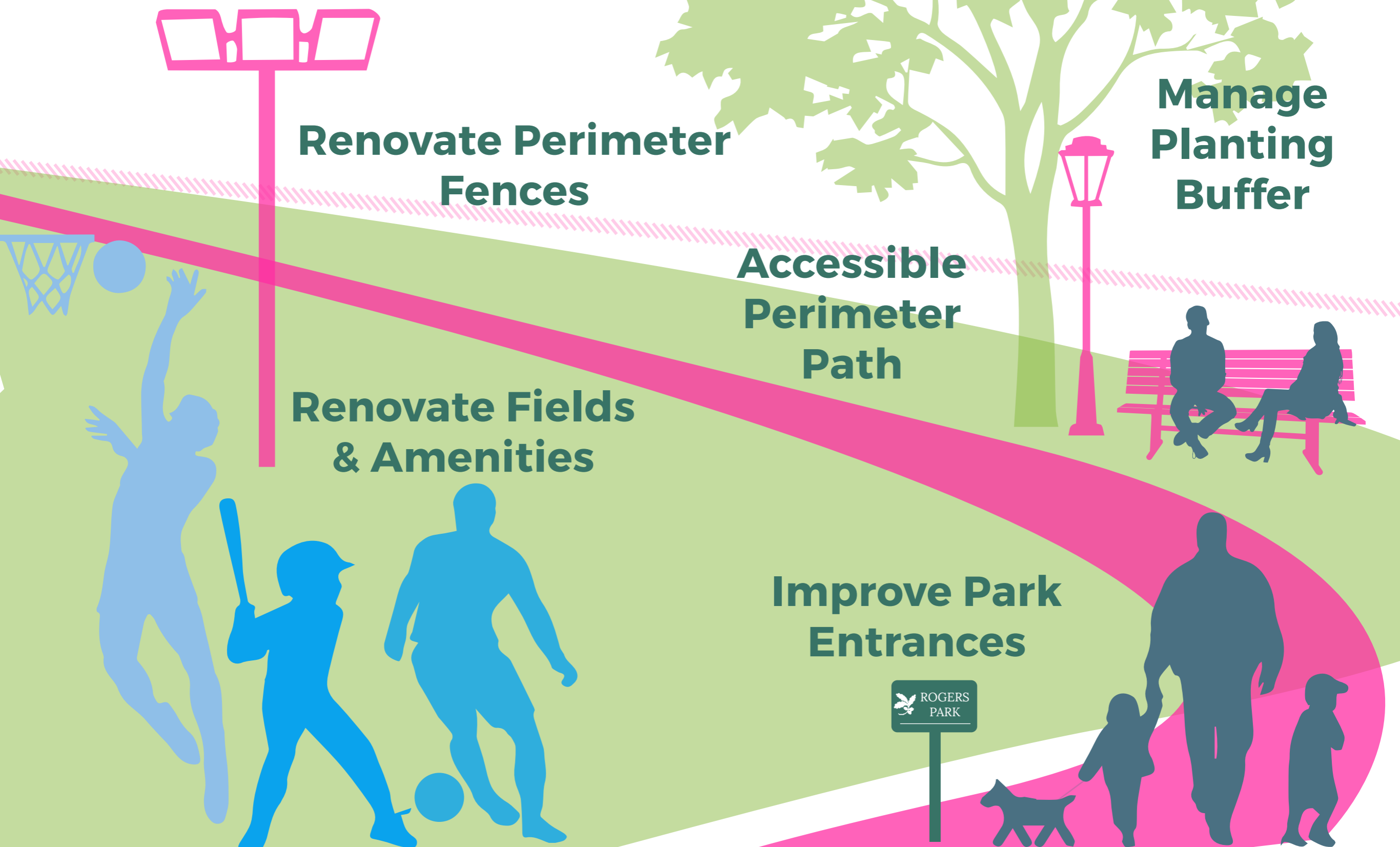
Team bench without paving or afternoon shade



Vegetation encroaching on lights and field

Site Analysis Summary

Strategies for achieving Phase 1 Goals





LISTENING & DISCUSSION

Help us build great parks.
Let us know what matters to you.

DISCUSSION: ROGERS PARK

- What are the most important things to include in Phase 1?
- Which park amenities are priorities for you?
- Which amenities do you want at each field?
- What parts of the park do you use most and how could they be improved?





THANK YOU!

Next Meeting Fall 2026 Date TBD

For questions, maintenance requests or concerns regarding any of our parks contact 311



nelle.ward@boston.gov



May 12, 2026
Boston Parks and Recreation



Context - City Planning

Rogers Park Master Plan 2018

