

EXISTING BUILDING FRONT FACADE @285
COMMONWEALTH AVE

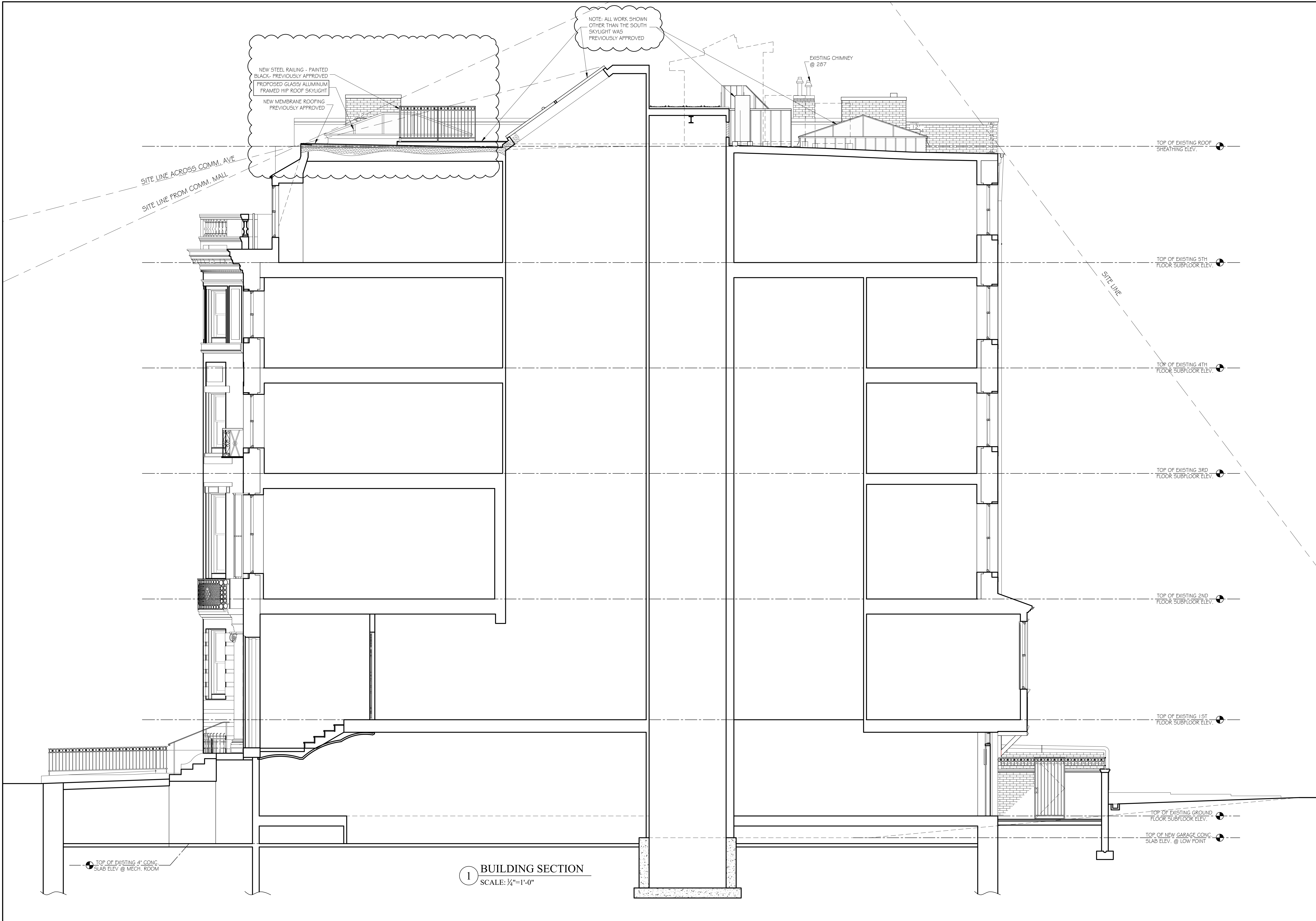


EXISTING BUILDING FRONT FACADE
@ 285 COMMONWEALTH AVE





AERIAL VIEW FROM SOUTH EAST



1 BUILDING SECTION
 SCALE: 1/4"=1'-0"

45 Newbury Street, Suite 506
 Boston, MA 02116
 Phone 617.956.9992
 Fax 617.956.9993

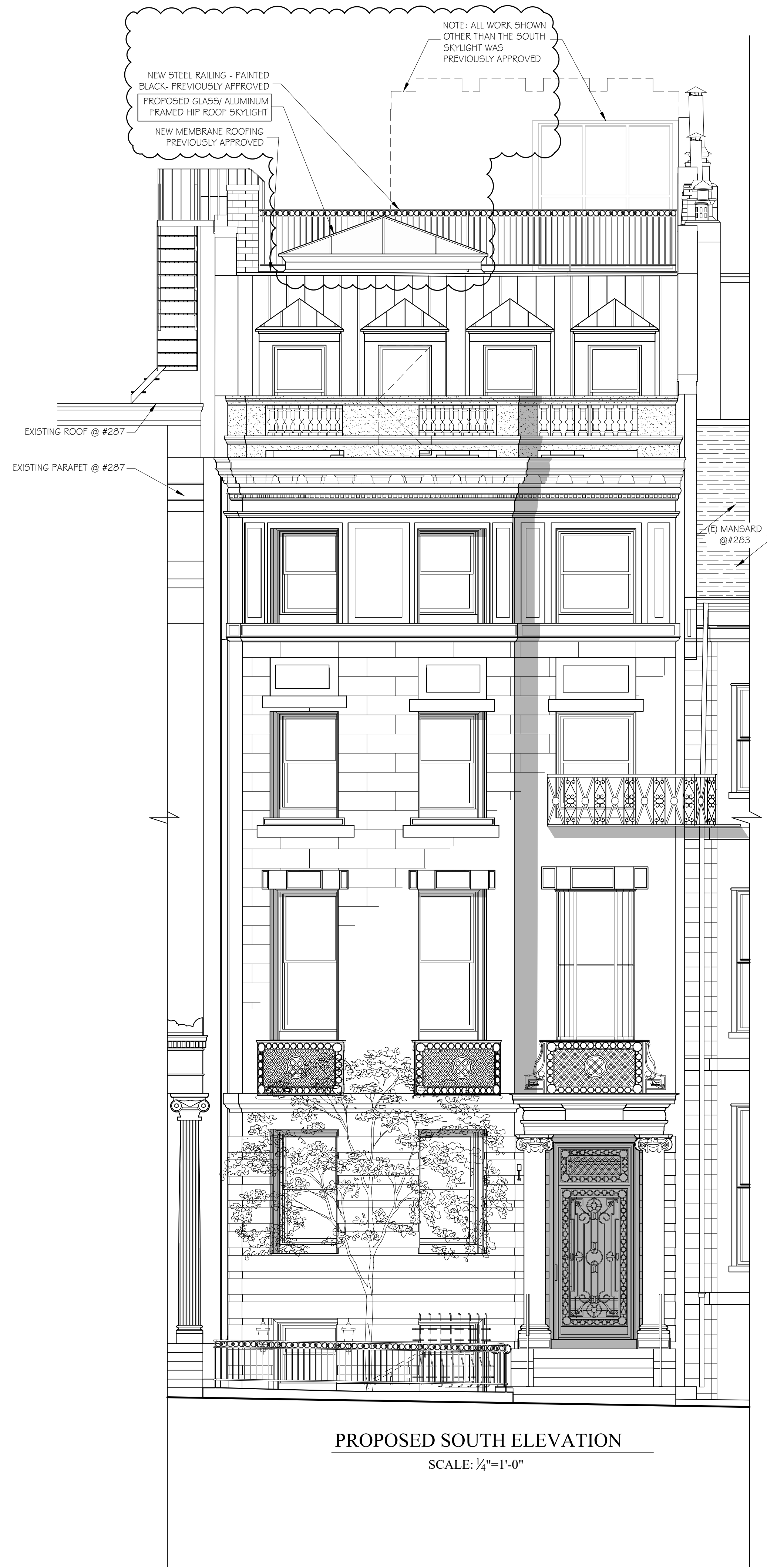
GD GRASSI DESIGN GROUP
 BG BEAUCHEMIN GRASSI INTERIORS

JOB NO: 2522
 SCALE: 1/4" = 1'-0"
 DATE: 05/08/2026
 REVISED

285 COMMONWEALTH AVE
 BOSTON, MA

BUILDING SECTION

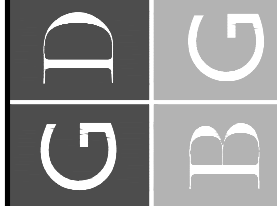
2



PROPOSED SOUTH ELEVATION
SCALE: 1/4"=1'-0"

45 Newbury Street, Suite 506
Boston, MA 02116
Phone 617-956-9992
Fax 617-956-9993

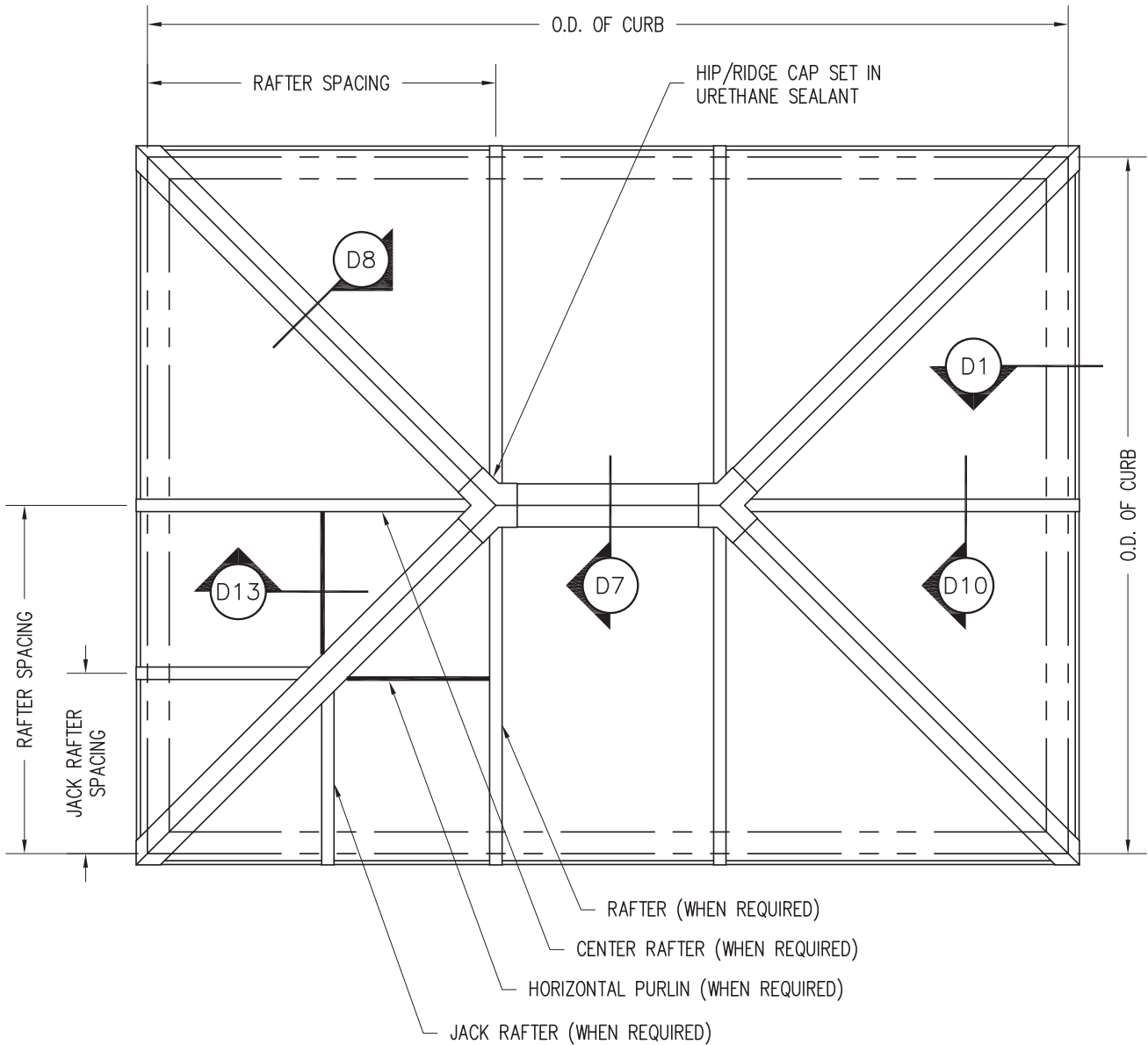
GRASSI DESIGN GROUP
BEAUCHEMIN GRASSI INTERIORS



JOB NO: 2522
SCALE: 1/4" = 1'-0"
DATE: 05.08.2026
REVISED

285 COMMONWEALTH AVE
BOSTON, MA

PROPOSED SOUTH
BUILDING ELEVATION



GENERAL NOTES:

- 1) RAFTER LOCATION BASED ON WASCO'S RECOMMENDATIONS AND AAMA GLAZING GUIDELINES (BASED ON SIZE OF UNIT, TYPE OF GLAZING, CUSTOMER'S REQUEST, ETC.)
- 2) UNIT PITCHES ARE AVAILABLE FROM 3:12 TO 12:12

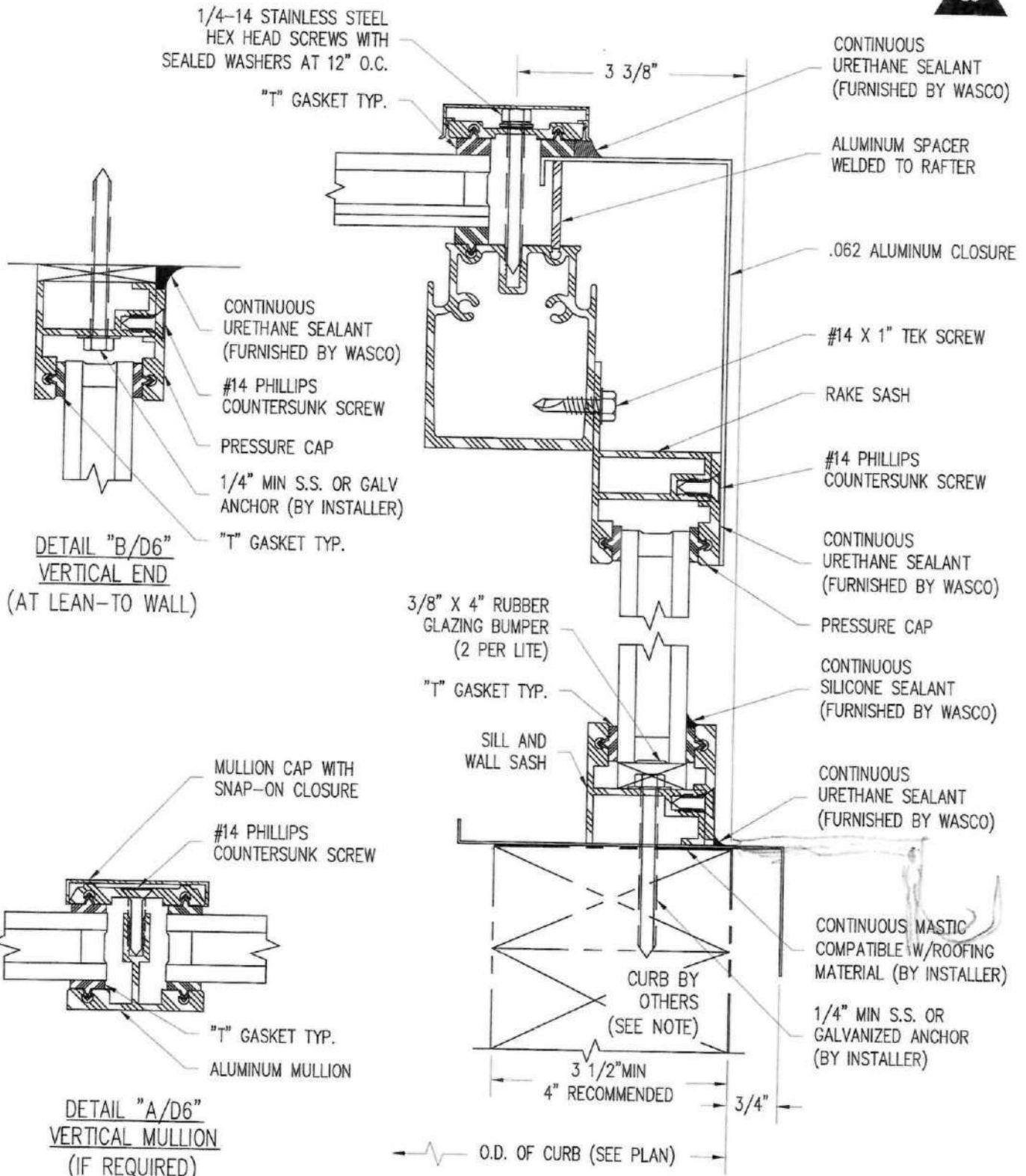
Wasco Part of
VELUX Commercial

VELUX Wells
 85 Spencer Dr, Unit A
 Wells, ME 04090
 1-800-88-VELUX
 veluxusa.com

PINNACLE 350 OR 600
 (PYH)
 EXTENDED PYRAMID
 PLAN VIEW

PLN2

SKYLIGHT



SKYLIGHT DETAILS

Since 1935



Wasco
SKYLIGHTS

Wasco Products, Inc.
22 Pioneer Avenue, P.O. Box 351
Sanford, ME 04073
Fax: 207-490-5270 sales@wascoproducts.com
800-388-0293 www.wascoproducts.com

**Pinnacle 300
Vertical End Detail**

D6

MOCK UP PHOTO



MOCK UP PHOTO



MOCK UP PHOTO



MOCK UP PHOTO



MOCK UP PHOTO



MOCK UP PHOTO



MOCK UP PHOTO



MOCK UP PHOTO



MOCK UP PHOTO



MOCK UP PHOTO

