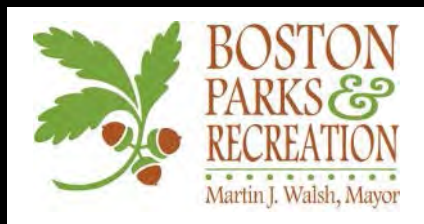




Ramsay Park

Public Meeting #2
11/15/2016



Project Team

Boston Parks and Recreation

Nathan Frazee, Project Manager

Marchelle Jacques-Yarde, Outreach Coordinator

Stantec Planning and Landscape Architecture

Kevin Beuttell, Designer

Hilary Buskirk, Designer

Meeting Agenda

- Project Recap
 - Budget/Schedule
- Project “Big Picture Goals”
- Project Overview
- Review Input received to date
- Design Alternatives
- Discussion

Project Overview

Community Meeting Process

- **Meeting #1**
Michael L. Bivins Court Dedication Ceremony
- **Meeting #2**
Design Alternatives
- **Meeting #3**
Review Final Proposed Design

Construction Schedule (Estimated)

- Design: Fall – Winter 2016
- Construction Start: Spring 2017
- Construction Timeline: Approximately 9 months

Budget from Capital Funds

- Estimated Construction Cost: \$1,630,000

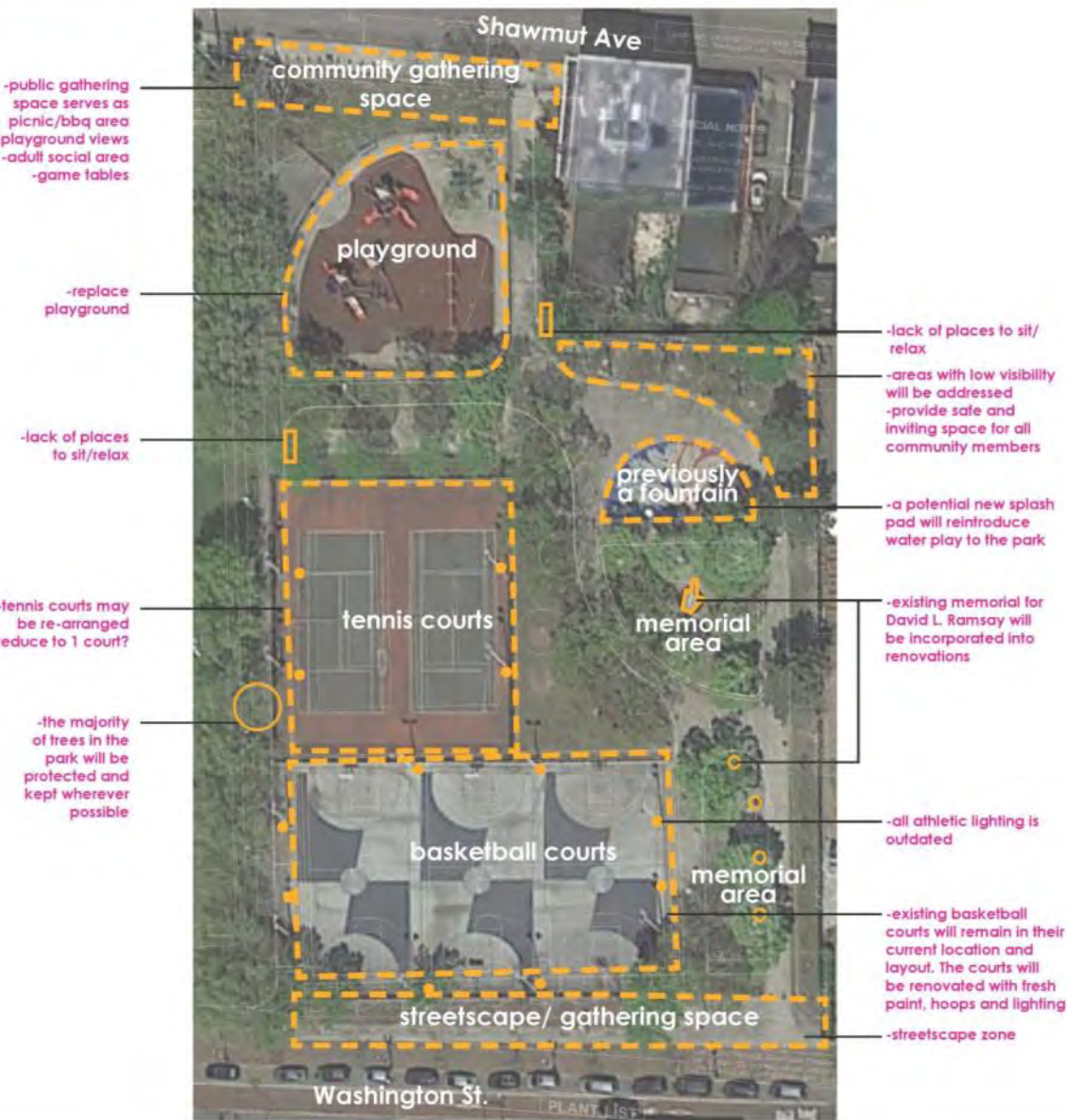
Park Renovation Focus Area



Big Picture Goals

- Preserve and Protect Existing Trees
- Expand Usable Park Area
- Improve Handicap Access
- Enhance Park Visibility
- Improve the Look of Park Entries
- Design Flexible, Multi-Functional Park Spaces

RAMSAY PARK - Site Analysis



existing park plan

Open Spaces Near Ramsay Park



park amenities within 1/2 mile of Ramsay

- Jeep Jones Park** SPORTS FACILITY, 2 BASKETBALL COURTS, FITNESS STATION, PLAYGROUND, PLAY STRUCTURE, TOT SPRAY AREA, PUBLIC ART
- Madison Park** SPORTS FACILITY, MULTI-USE SPACE, BASKETBALL COURTS, TENNIS COURTS, BASEBALL BATTING CAGE, TRACK AND FIELD, PUBLIC ART
- Carter Playground** SPORTS FACILITY, MULTI-USE SPACE, 5 TENNIS COURTS, PLAYGROUND, PLAY STRUCTURE, TOT SPRAY AREA
- O'Day Playground** SPORTS FACILITY, STREET HOCKEY, 1 BASKETBALL COURTS, PLAYGROUND, PLAY STRUCTURE, SWINGS, TOT SPRAY AREA, STAGE/AMPHITHEATER
- Edna V Bynoe Park** PLAYGROUND, PLAY STRUCTURE, SWINGS, TOT SPRAY AREA, SPORTS FACILITY, 3 BASKETBALL COURTS, 1 TENNIS COURT, LITTLE LEAGUE

Existing Conditions

Basketball Courts



Existing Conditions

Tennis Courts



Existing Conditions

Previous Fountain Area



Existing Conditions

Playground



1st Community Meeting
October 20, 2016

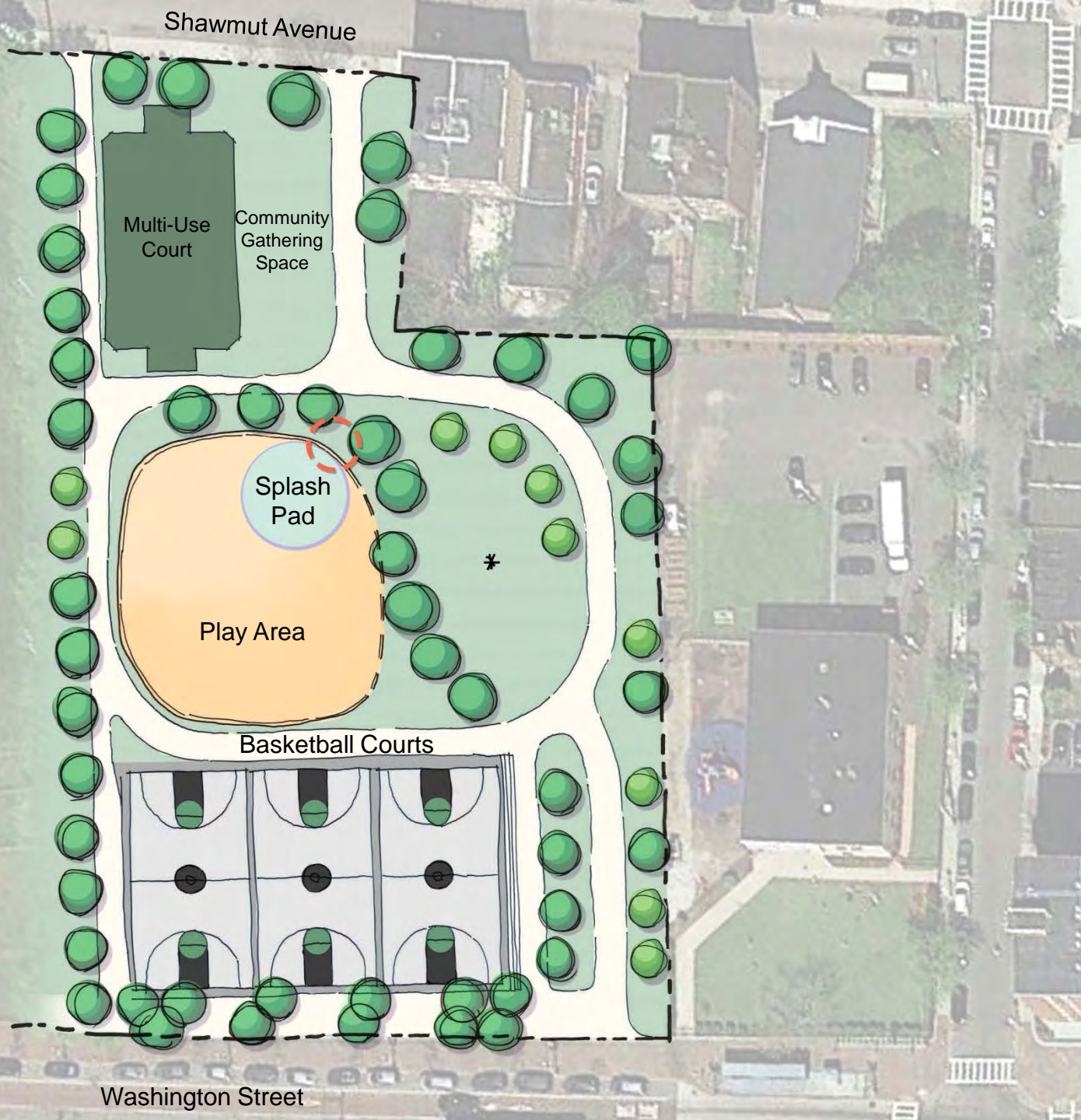
Public Comments:

- Community gathering space should be provided to meet the current uses along the northern edge of the park for barbequing, socializing, etc.
- Basketball courts are an active and highly utilized part of the park
- The playground equipment is old and run-down - new and updated play equipment is needed.
- Visibility is an issue that need to be addressed by opening up viewsheds to help reduce undesirable activities within the park
- Seating needs to be reintroduced
- Incorporate memorial into future design
- The spatial organization of the park is not efficient

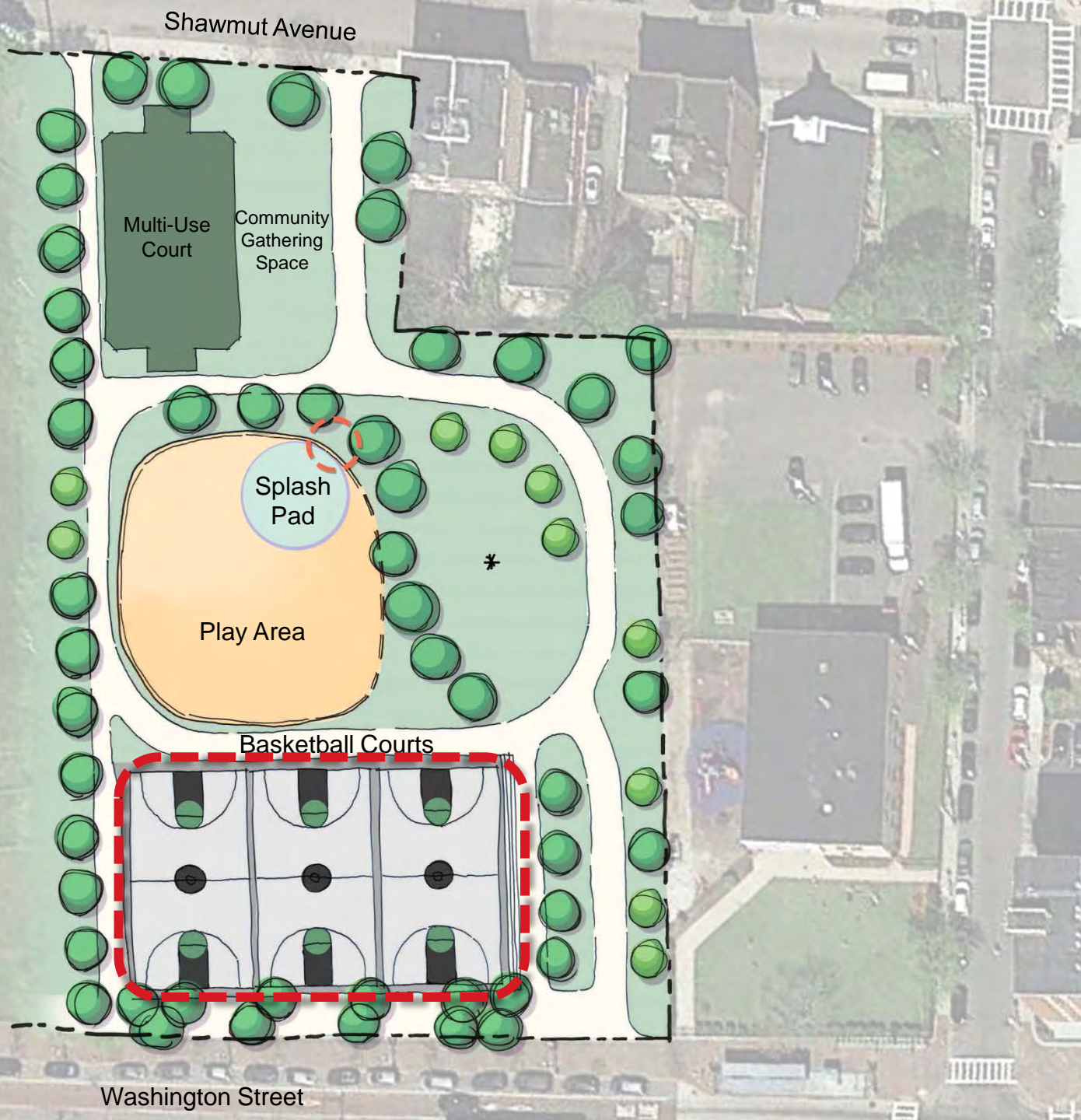
Design Alternatives

Concept A

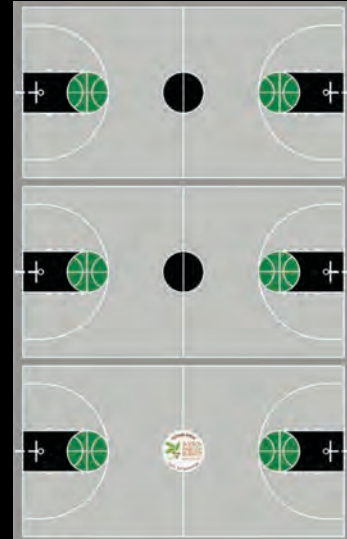
Concept A



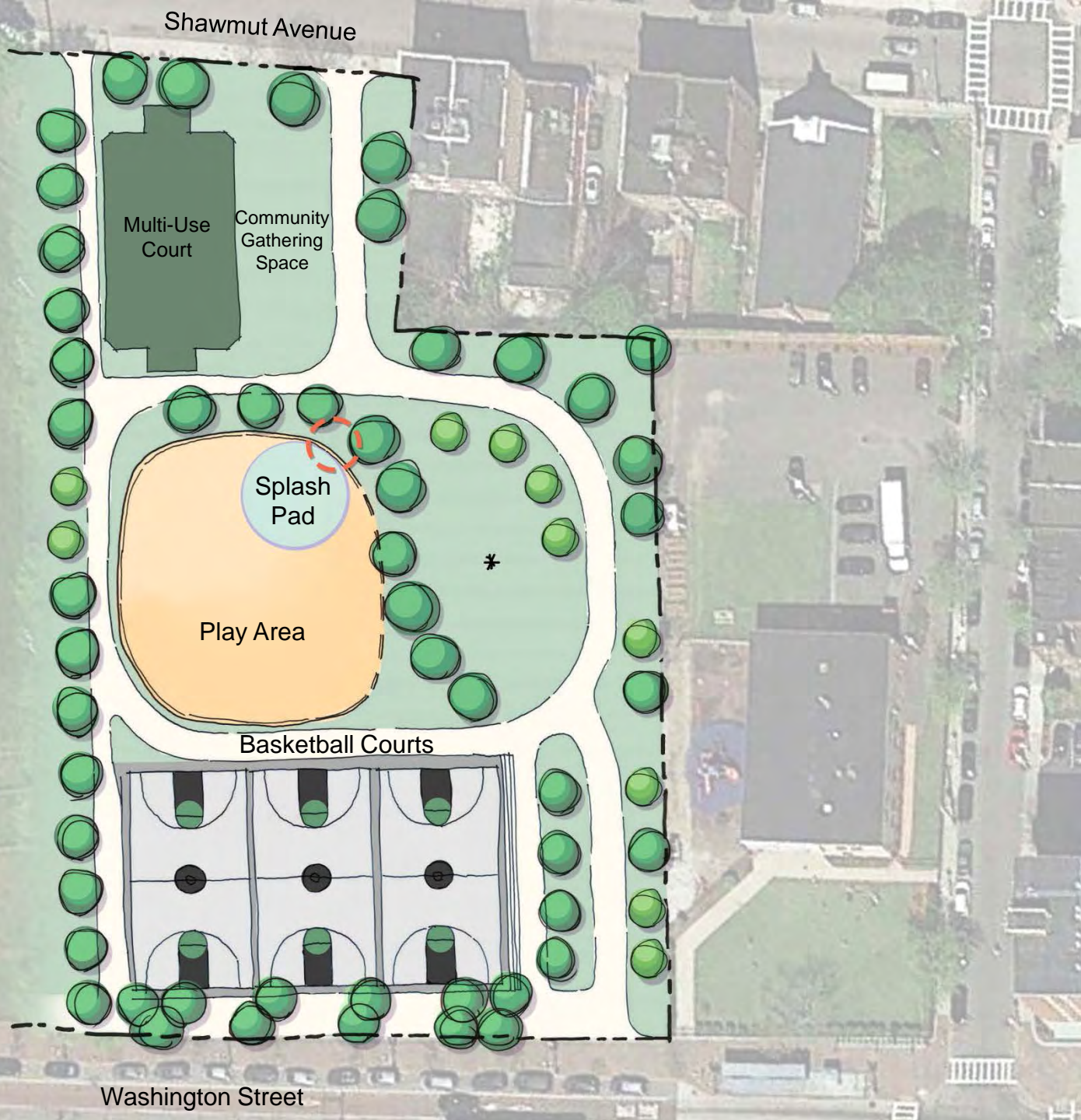
Concept A



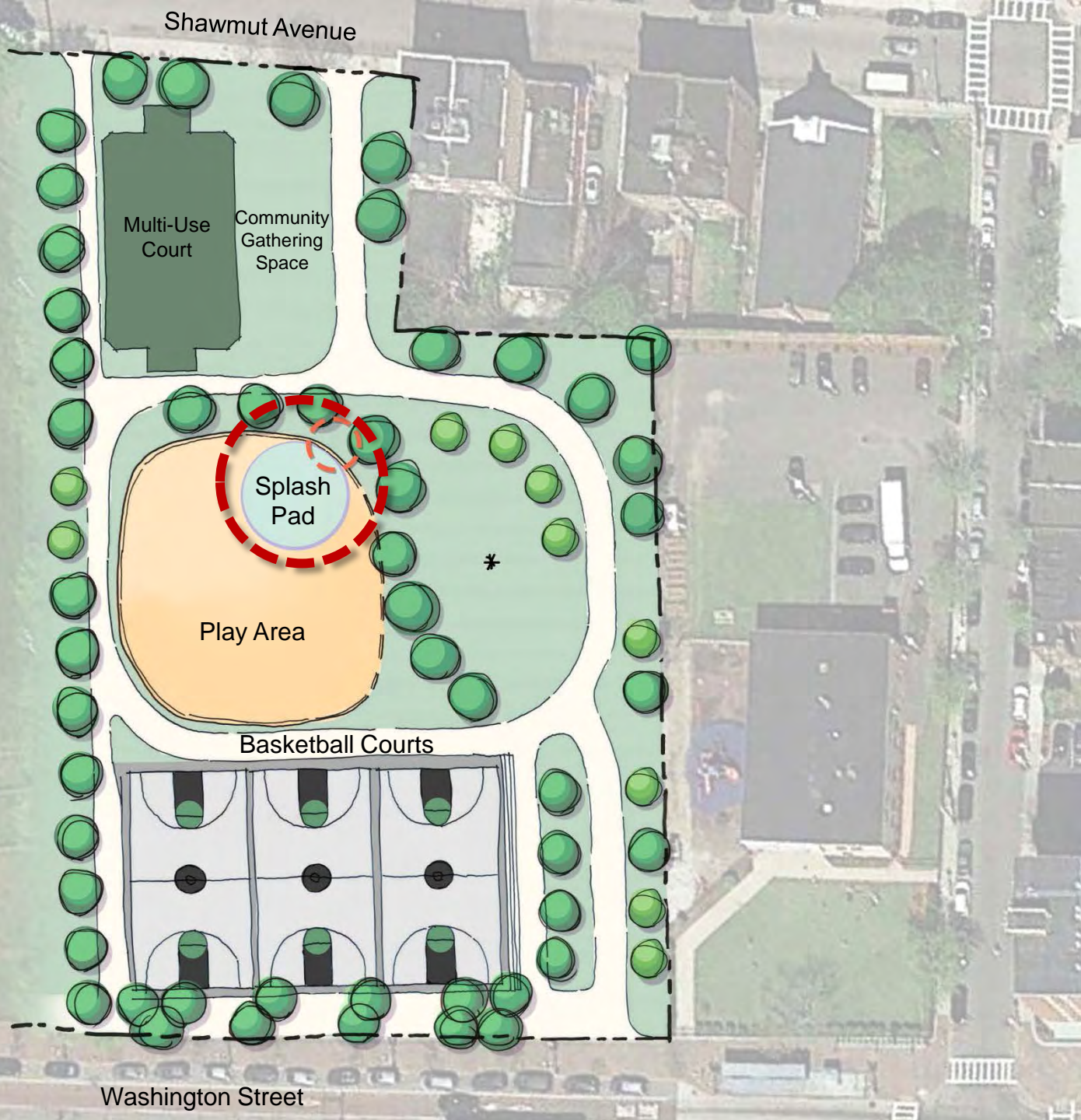
Courts



Concept A



Concept A



Shawmut Avenue

Multi-Use Court
Community Gathering Space

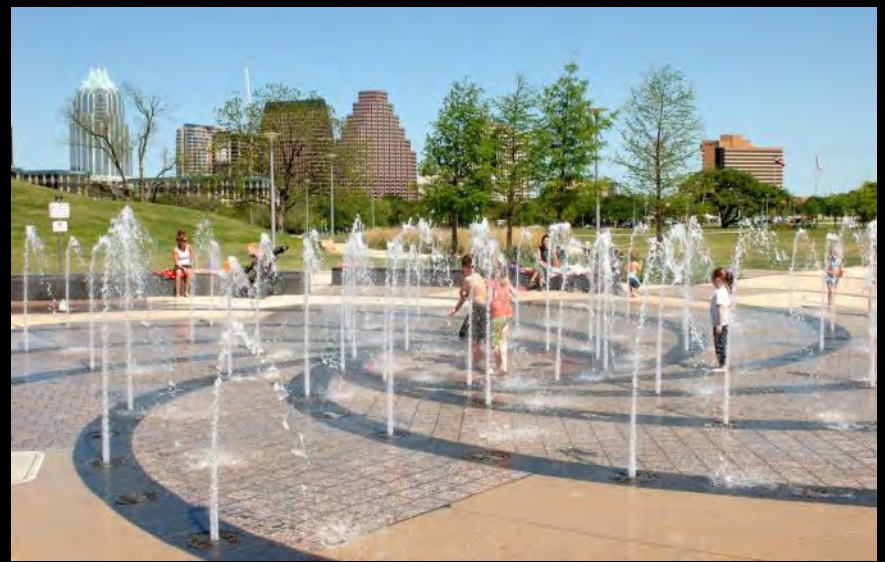
Splash Pad

Play Area

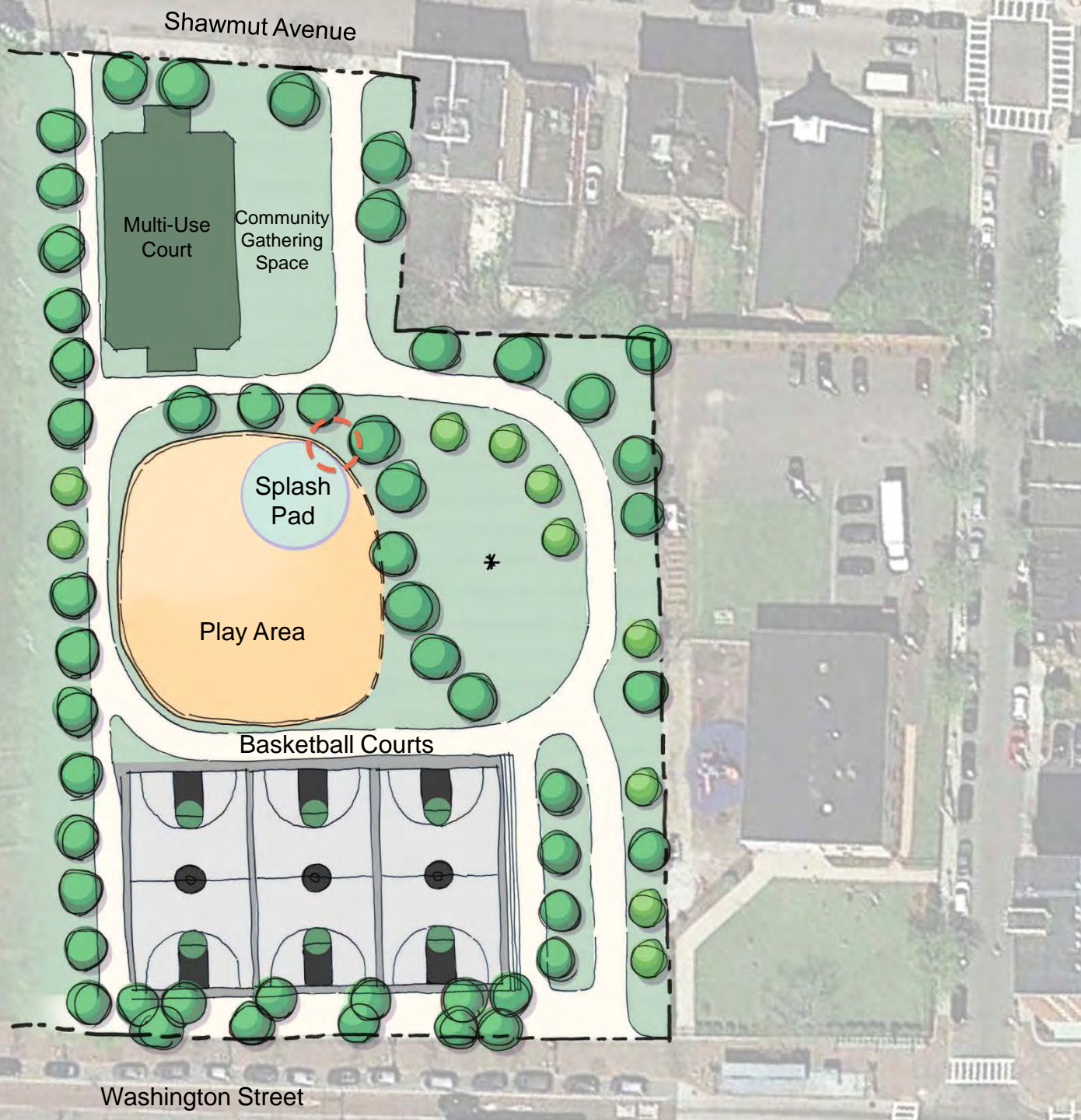
Basketball Courts

Washington Street

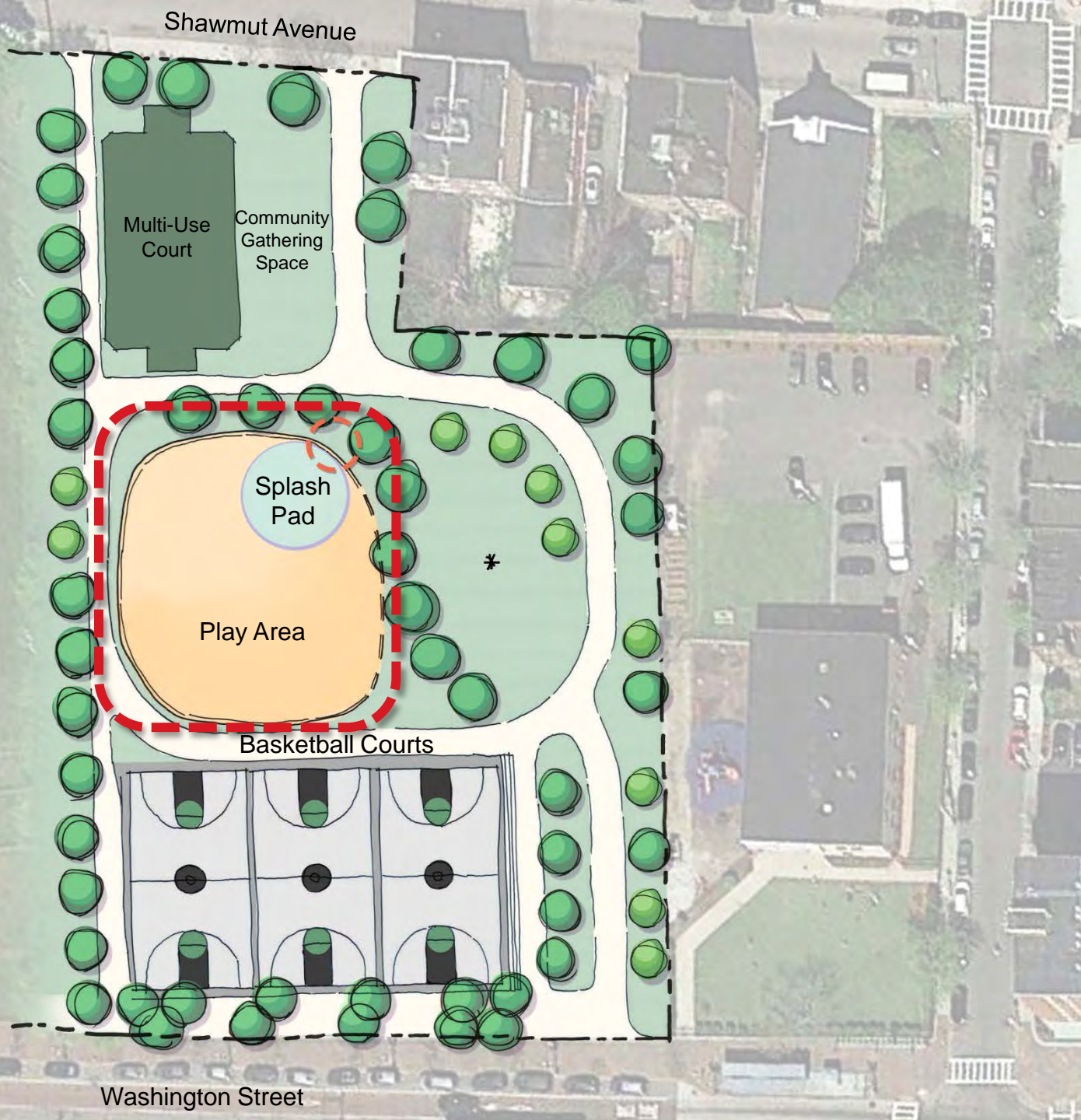
Splash Pad



Concept A



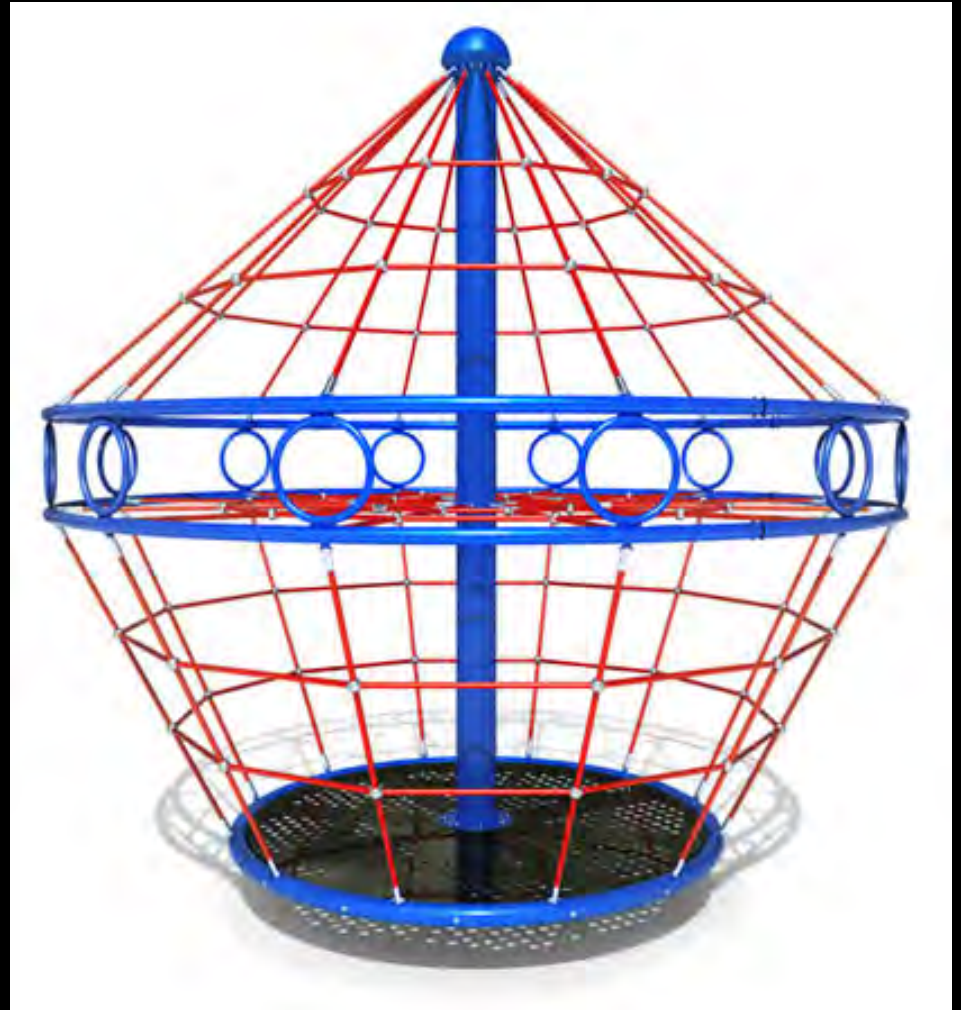
Concept A



Swings and Slides



Rotating Rope Climbers



Rope Climbers



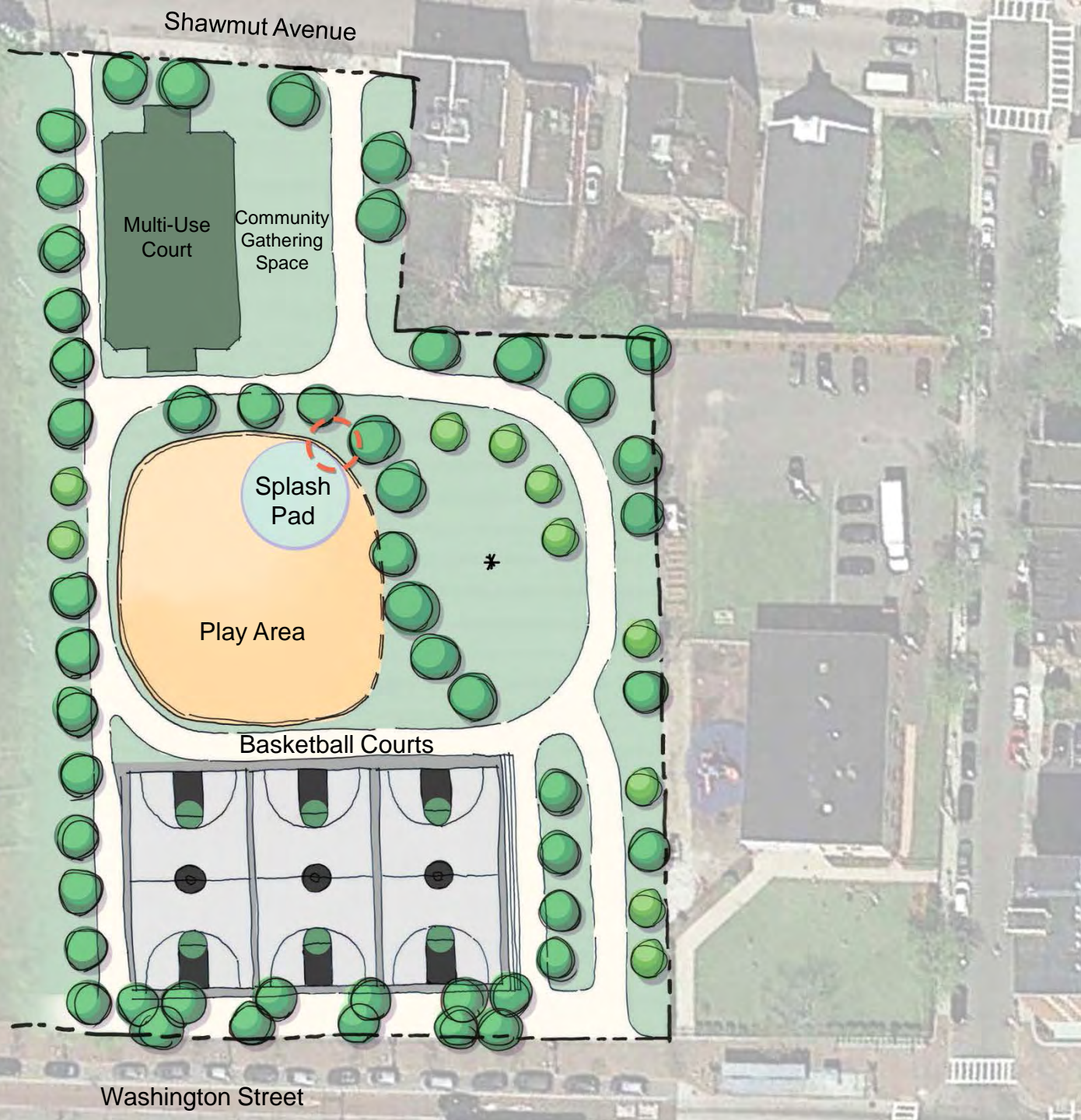
Play Equipment



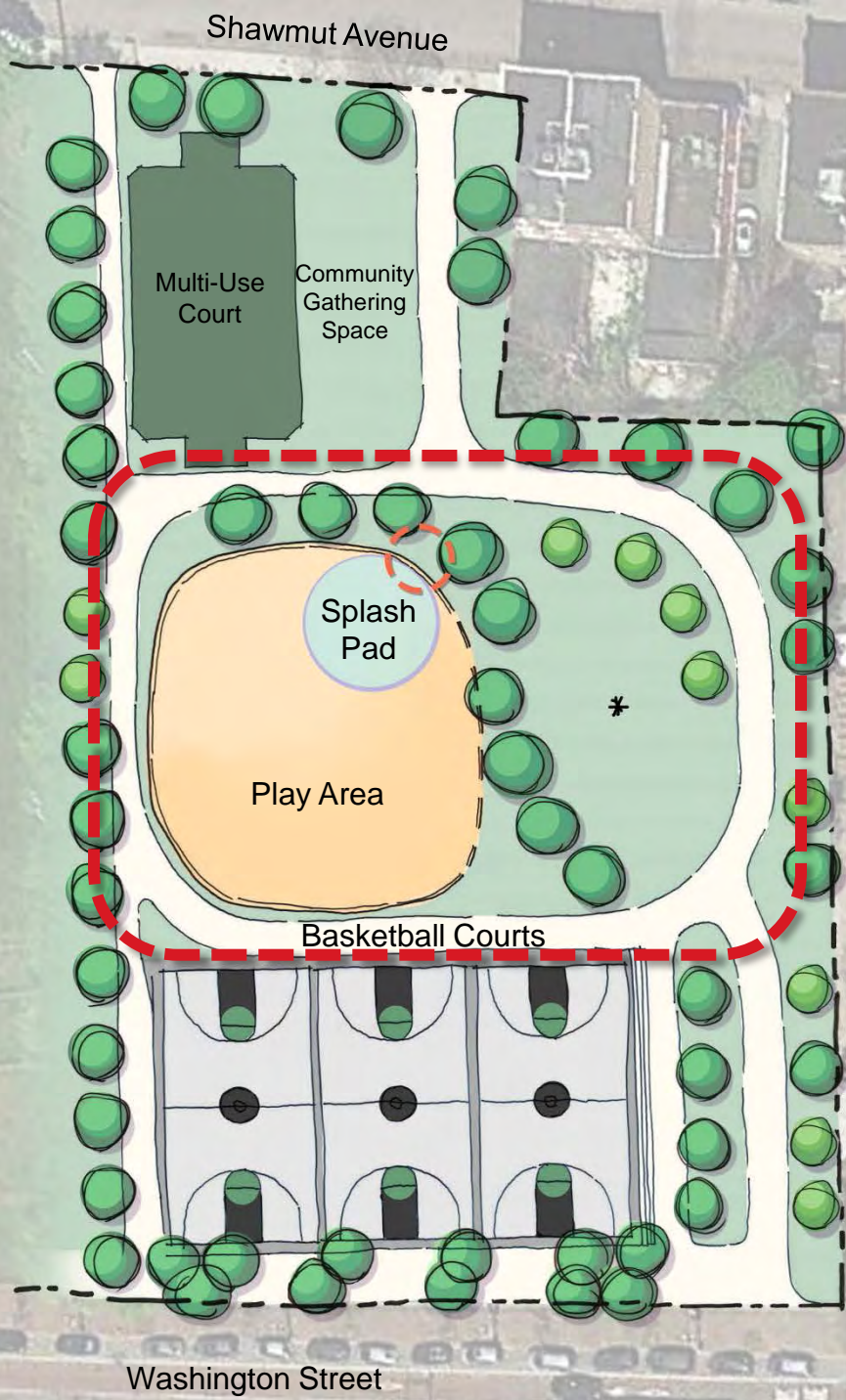
Playground Surfacing



Concept A



Concept A



Wave Path



Site Furnishings



Site Furnishings



Concept B

Concept B

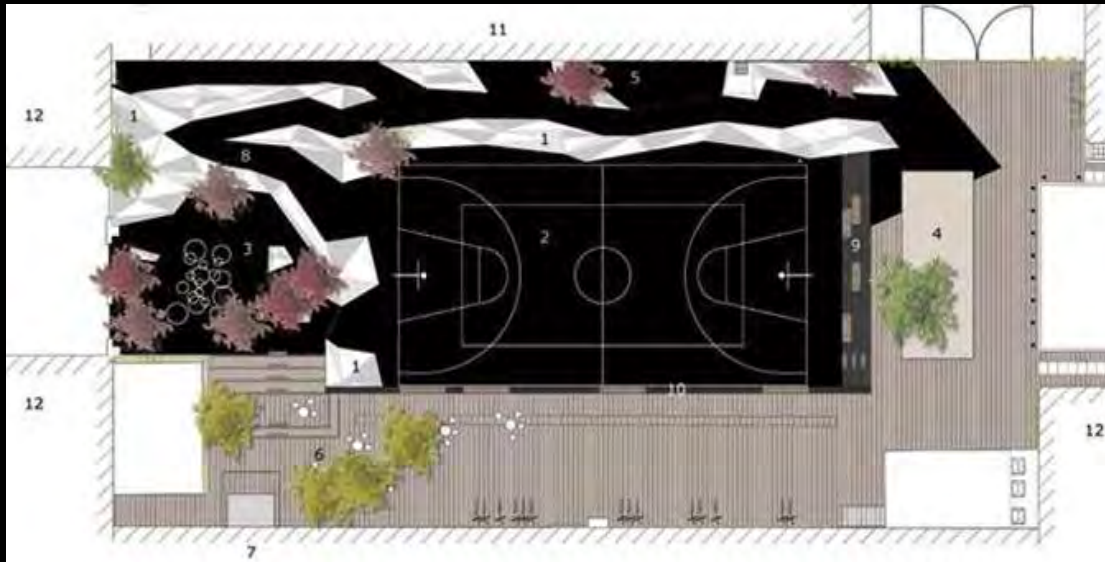


Washington Street

Concept B



Geometric Landforms



Geometric Landforms



Mounded Landforms



Concept C

Concept C



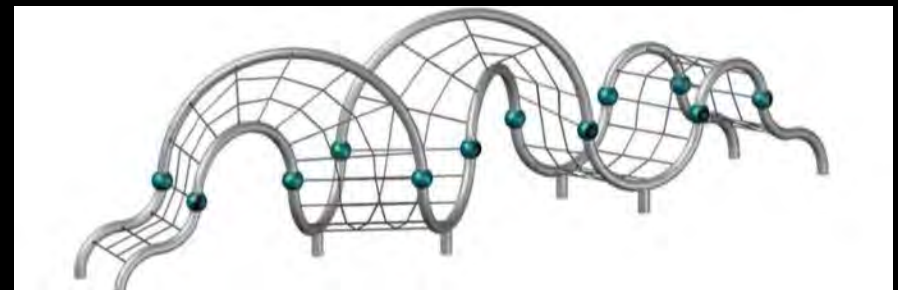
Washington Street

Concept C



Washington Street

Ropes Courses





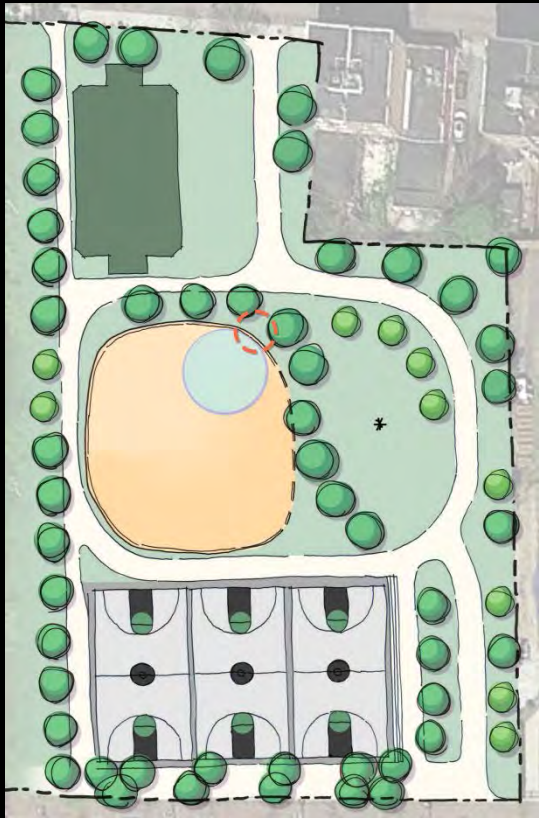
SIDEWALK INTERVENTION



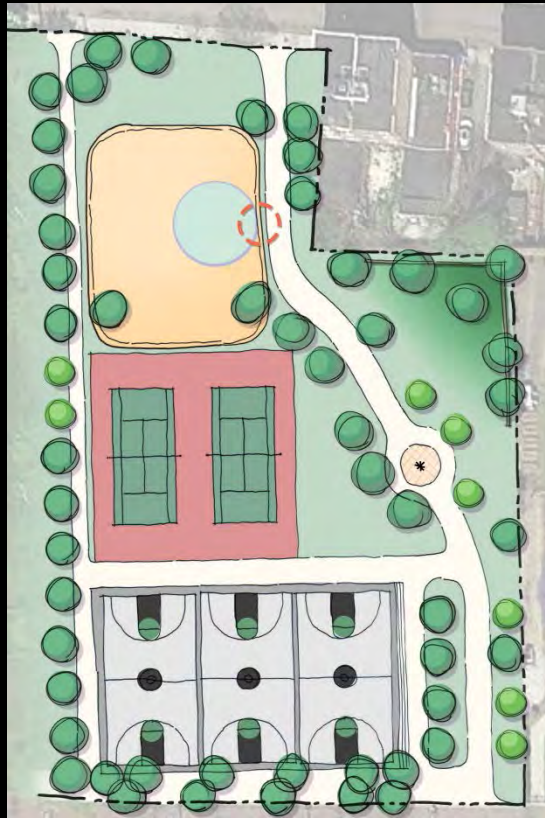
FENCE TO BE REMOVED
ALONG SHAWMUT AVE.

Sidewalk Intervention

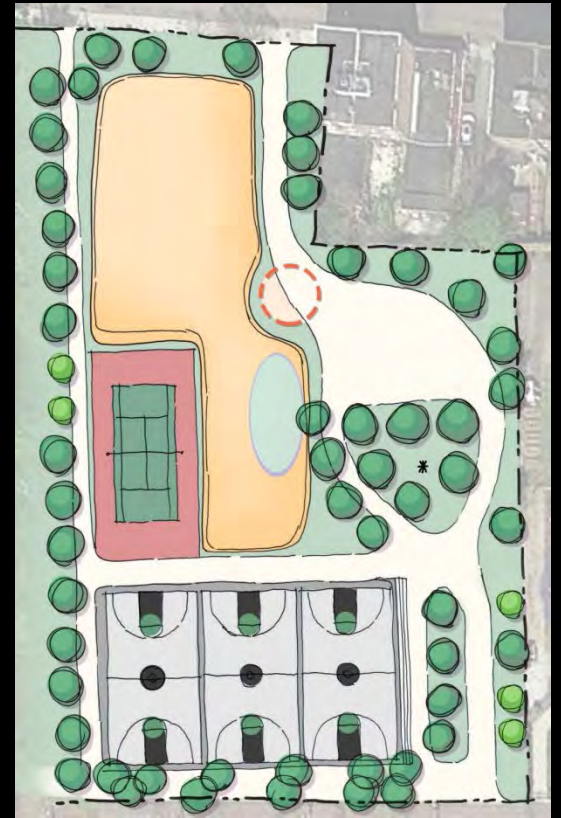




Concept A



Concept B



Concept C



Thank You!

Next Community Meeting – TBA

Should you have any additional questions, comments, or concerns regarding the design element please contact:

Nathan Frazee – Project Manager

Design & Construction Division

617.961.3167

Nathan.Frazee@boston.gov

For questions, comments, or concerns that are *non-design* related or if you have interest in starting a friends group, please contact:

Marchelle Jacques-Yarde – Outreach Coordinator/Park Partners Manager

617.961.3006

Marchelle.Jacques-Yarde@boston.gov