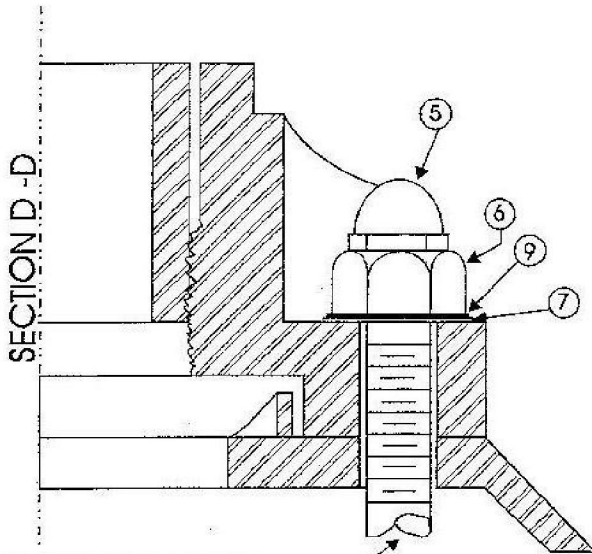


# TRAFFIC SIGNAL POST PEDESTAL TYPE

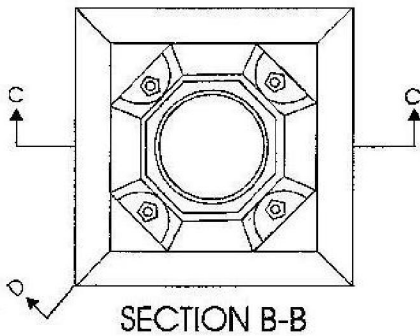
**NOTE:** Identification Tags for posts and housings shall be installed as per BID spec. A23.

TYPE	POST HT.	H	S	PIPE SHAFT
3A	8'-0"	8'-0"	5'-10"	6'-1"
3B	9'-0"	9'-0"	6'-10"	7'-1"
3C	10'-0"	10'-0"	7'-10"	8'-1"
3P	5'-0"	5'-0"	2'-10"	3'-1"
3D	12'-0"	12'-0"	9'-10"	10'-1"
3E	12'-6"	12'-6"	10'-3"	10'-7"

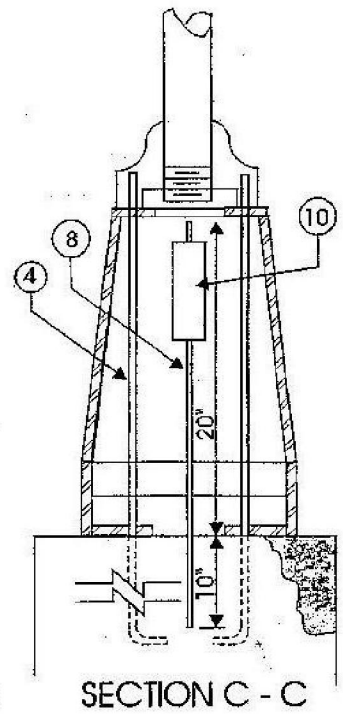
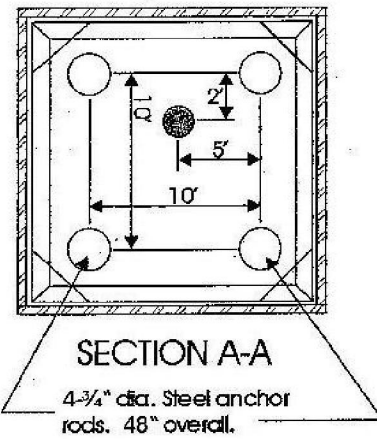
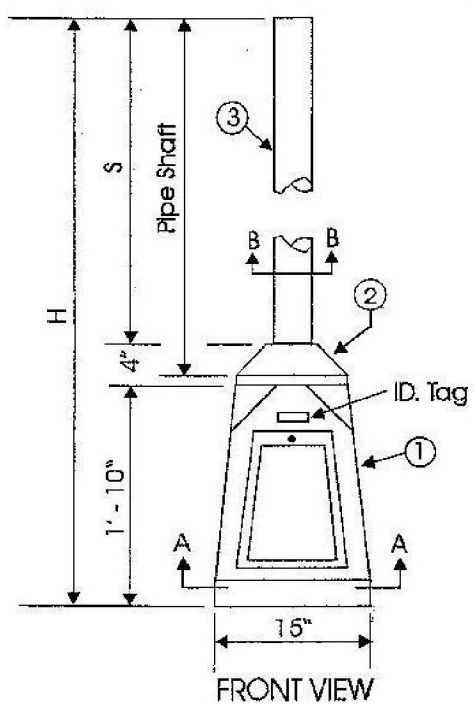
4" Std. Pipe shaft. Bottom end shall be threaded outside, 4" Std pipe Thread. Shaft shall be painted inside & outside in accordance with section 800 subsection 815.61 of the Commonwealth of Massachusetts Standard Specification for Highways & Bridges.



Top ends of anchor rods shall have  $\frac{3}{4}$ " - 10 threads 4" long.



Bill of Material			
No.	Name	Qty.	
1	Pedestal Base	1	Aluminum alloy per BID specs A14.1 & A15
2	Column Base	1	Aluminum alloy per BID spec A16
3	Pipe Shaft	1	Steel (thread to be protected)
4	Anchor Rods	4	Hot Dipped Galvanized
5	$\frac{3}{4}$ " - 10 Hex Cap Nuts	4	Brass
6	$\frac{3}{4}$ " - 10 Hex Nuts	4	Hot Dipped Galvanized
7	Flat Washers	4	Hot Dipped Galvanized
8	Terminal Rod	1	Hot Dipped Galvanized
9	Lock washer	4	Hot Dipped Galvanized
10	Terminal Block (as needed)	Per BID Spec A26	



**A13.1** NOT TO SCALE

Rev. 3-11-95 10-31-02