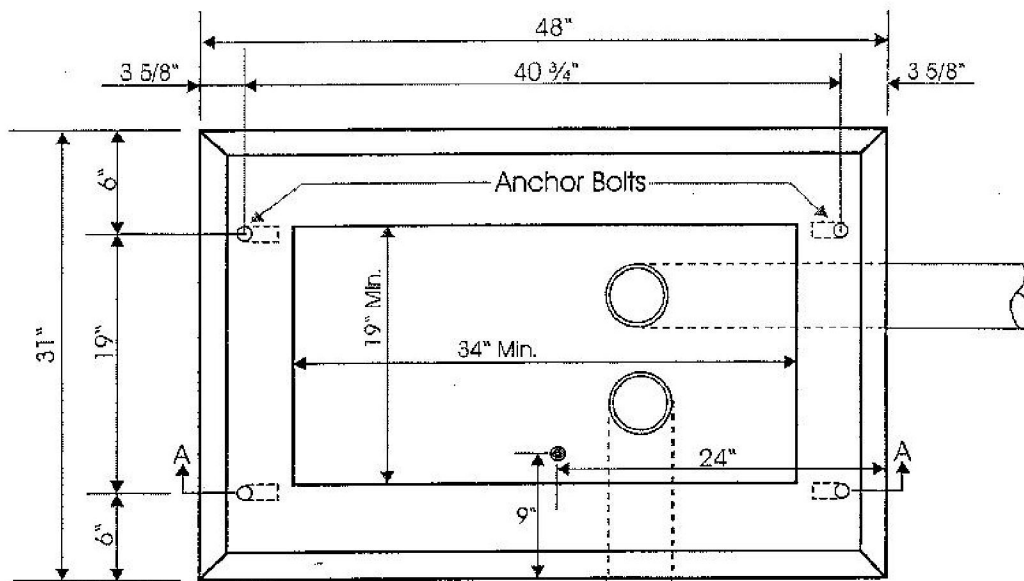


CONCRETE CONTROL BOX FOUNDATION FOR TYPE CC & CD CONTROL CABINETS

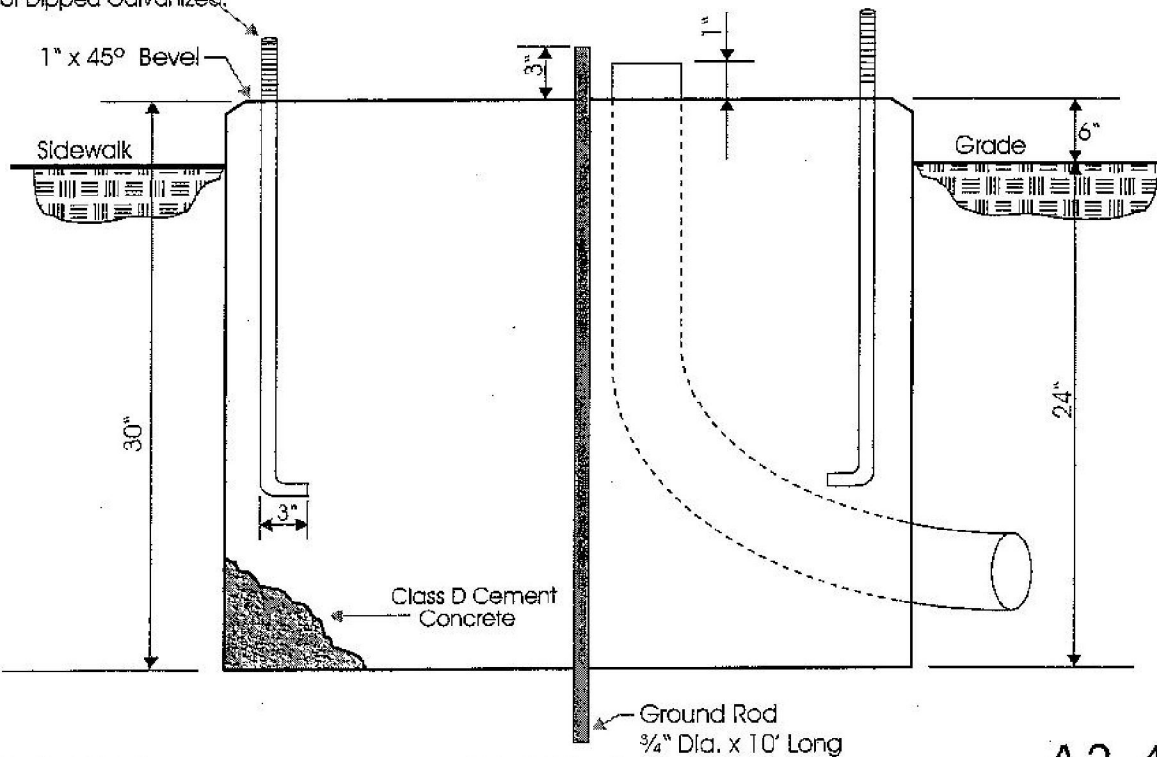


NOTE:
Control cabinet shall have an unobstructed inside opening as shown.

NOTES:
If position is specified near the curb face, minimum distance to center line of Control Box from face of curb to be 40".

Anchor Rods $\frac{3}{4}$ " \varnothing , 21" long overall,
 $\frac{3}{4}$ "-10 U.S.S. threads 4" long,
Hot Dipped Galvanized.

Conduits shall be located within the
19" x 34" area.



3-21-89 REV. 4-6-98; 10-31-02

NOT TO SCALE

SECTION A-A

A3.4