



Improvements to
**Paul Revere Mall
The Prado**
Community Meeting #1

AGENDA

- 1 **PROJECT TEAM INTRODUCTION**
- 2 **PROJECT OVERVIEW**
- 3 **PRESENTATION**
- 4 **LISTENING & DISCUSSION**
- 5 **CLOSING REMARKS & NEXT STEPS**

Project Team

Allison Perlman

Allison.Pperlman@boston.gov or 617-961-3035

Marchelle Jacques-Yarde

Outreach Coordinator, External Affairs

marchelle.jacques-yarde@boston.gov or 617-961-3006

Kyle Zick

Kyle Zick Landscape Architecture, Inc.

Maria Lanza

Office of Neighborhood Services

Maria.Lanza@boston.gov or phone number 617-635-4987



Project Schedule & Funding

March 2017

Community Meeting 1

SEPTEMBER 2017

Community Meeting 3

MARCH 2018

Construction

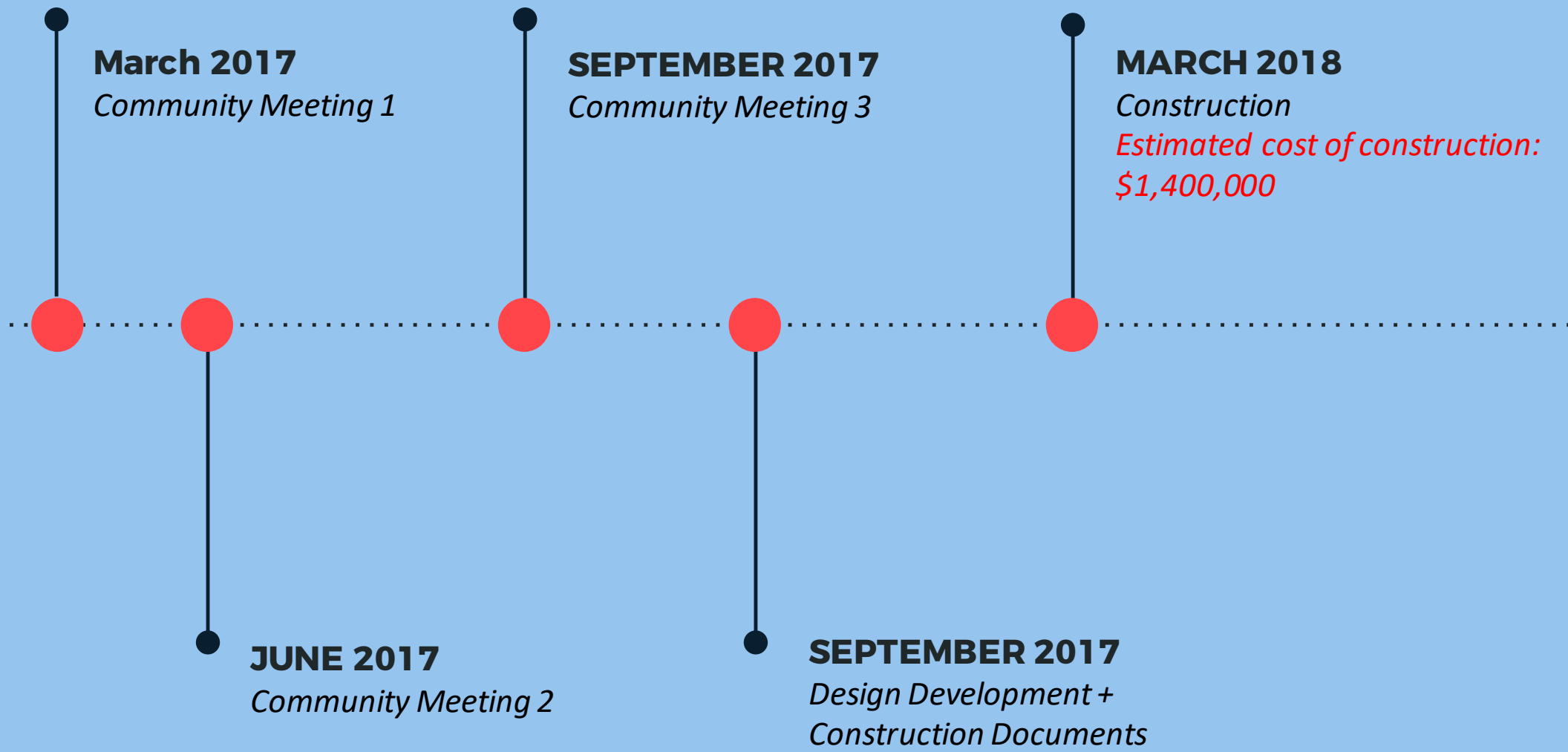
*Estimated cost of construction:
\$1,400,000*

JUNE 2017

Community Meeting 2

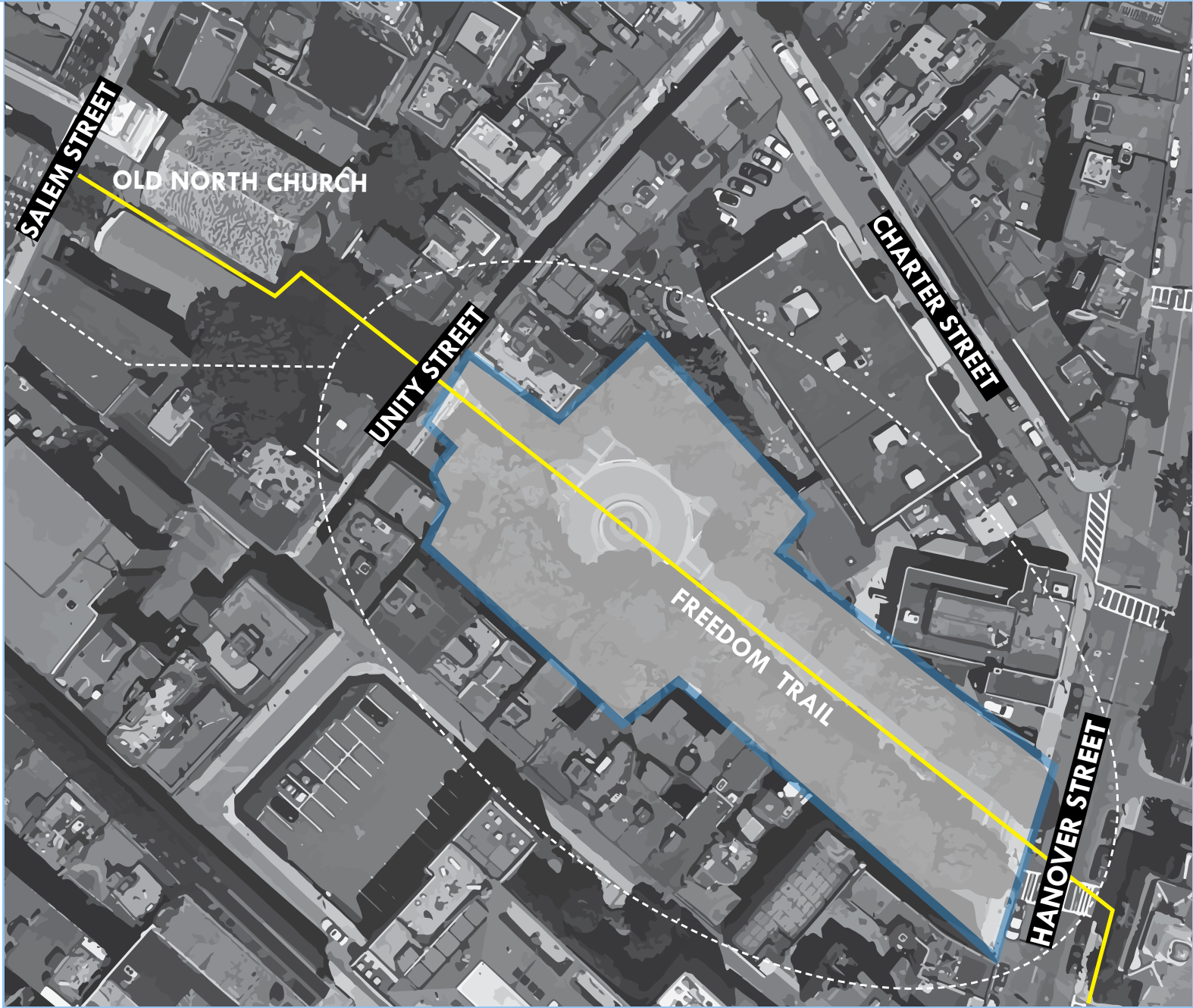
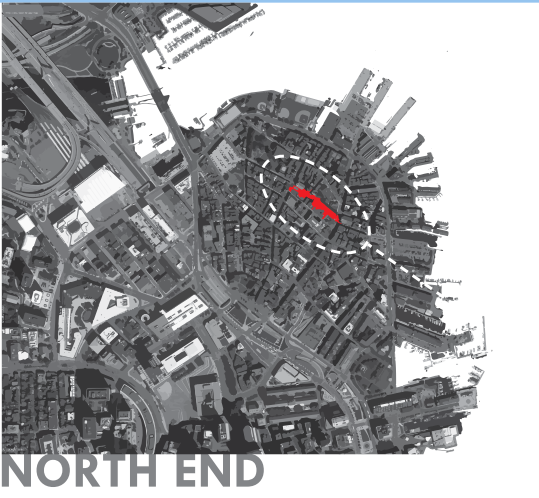
SEPTEMBER 2017

*Design Development +
Construction Documents*





Project Overview

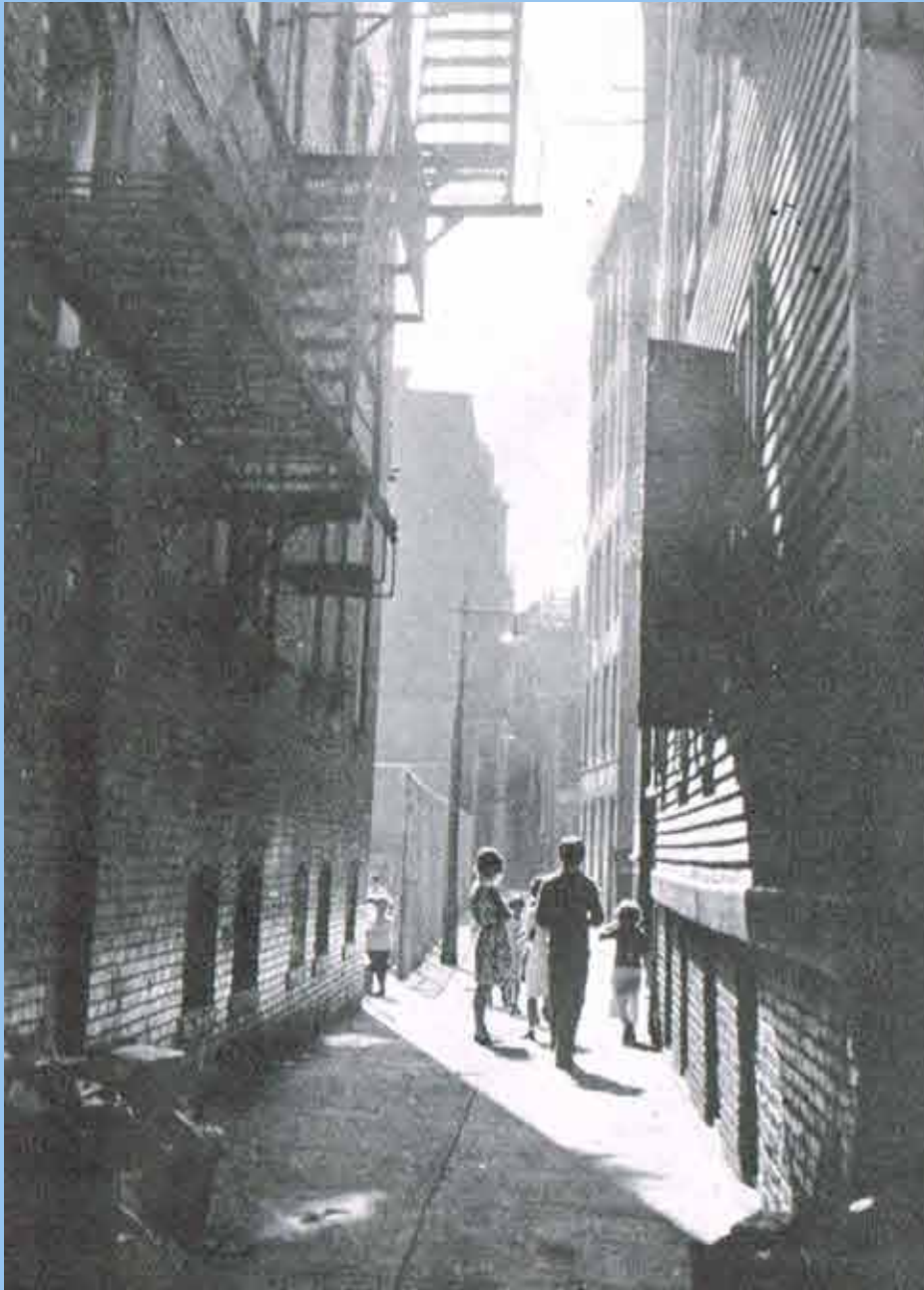


Project Overview

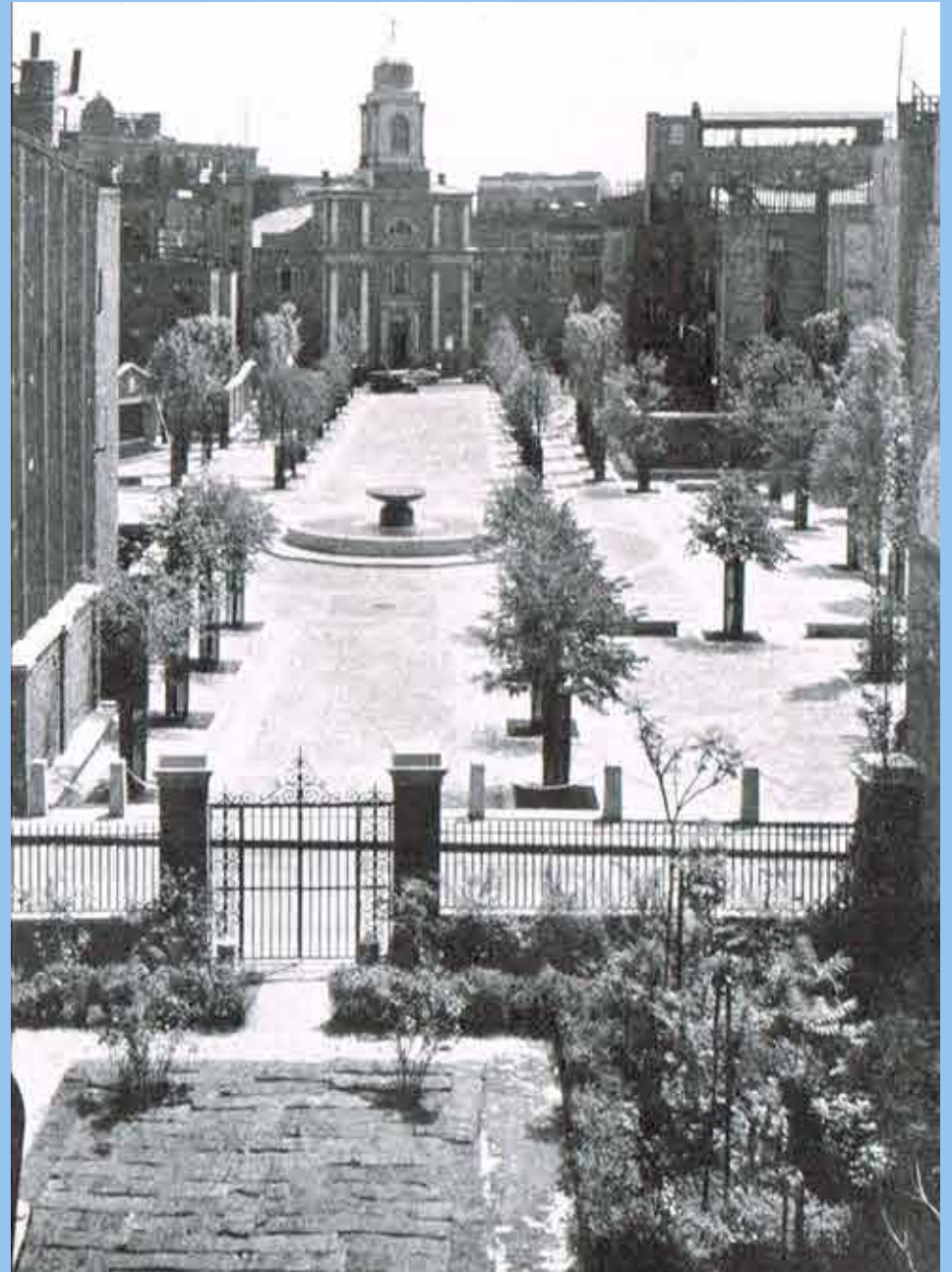
- Preserve and Protect/Existing Trees
- Expand Usable Park Area
- Improve Universal Access
- Enhance Park Visibility
- Improve Park Access
- Improve Neighborhood Connectivity/Programming
- Design Flexible, Multi-functional park spaces
- Site Drainage
- Fountain Operation
- Conservation of Historic Features

Site Analysis

History & Context



Webster Avenue, razed to create the Prado



Newly Constructed Prado

History & Context



Site Analysis
Access & Accessibility



Site Analysis
Access & Accessibility



Site Analysis
Amenities



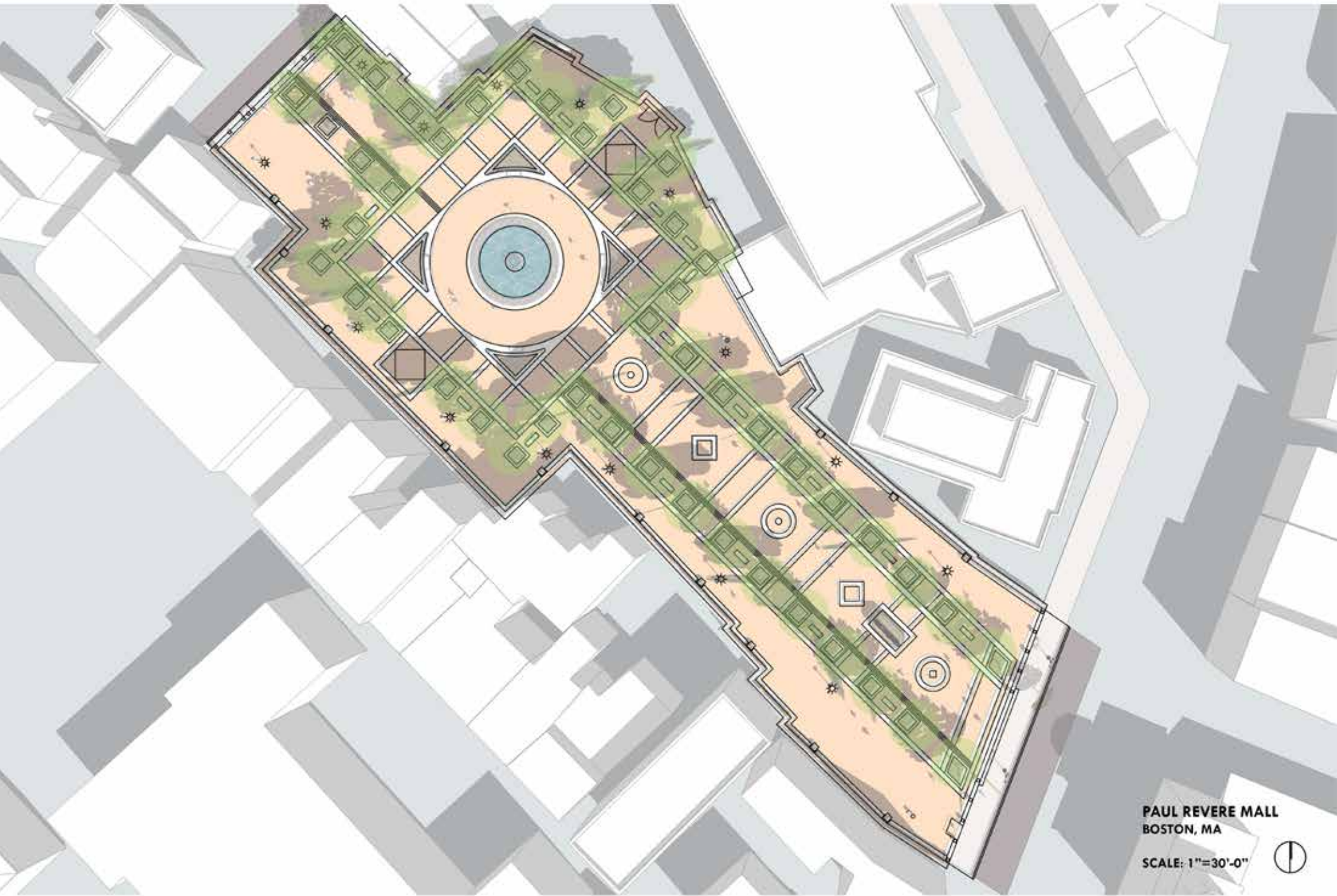
Site Analysis
Amenities



Site Analysis
Amenities







PAUL REVERE MALL
BOSTON, MA

SCALE: 1"=30'-0"





A large group of people is seated in a room, facing a presentation screen. The room appears to be a community meeting or a public discussion. The people are dressed in casual to business-casual attire. The room has a modern feel with large windows and a projector screen. The overall atmosphere is one of a community gathering.

LISTENING & DISCUSSION

Help us build great parks by providing input on what matters to you.



Allison Perlman, Project Manager
Allison.Pperlman@boston.gov or 617-961-3035

Marchelle Jacques-Yarde, Outreach Coordinator, External Affairs
marchelle.jacques-yarde@boston.gov or 617-961-3006

ONS representative, Office of Neighborhood Services
Maria.Lanza@boston.gov or 617-635-4987

For questions, maintenance requests or concerns regarding any of our parks
contact 311

