

Improvements to
WESTLAND AVENUE
GATEWAY
BACK BAY FENS



AGENDA

1

PROJECT TEAM INTRODUCTION

2

PROJECT OVERVIEW

3

PRESENTATION

4

LISTENING & DISCUSSION

5

CLOSING REMARKS & NEXT STEPS

PROJECT TEAM

Cathy Baker- Eclipse

Project Manager

Cathy.Baker-Eclipse@boston.gov or 617-961-3058

Margaret Dyson

Director of Historic Parks

Margaret.Dyson@boston.gov or 617-961-3028

Marchelle Jacques- Yarde

Outreach Coordinator, External Affairs

marchelle.jacques-yarde@boston.gov or 617-961-3006

Richard Burck Associates

Landscape Architect

Building & Monument Conservation

Stone Conservator



DESIGN TEAM

Project Lead / Landscape Architect

Richard Burck Associates, Somerville, MA

Richard “Skip” Burck, RLA, FASLA, FAAR
Principal



Sam Valentine, RLA, LEED AP
Project Manager

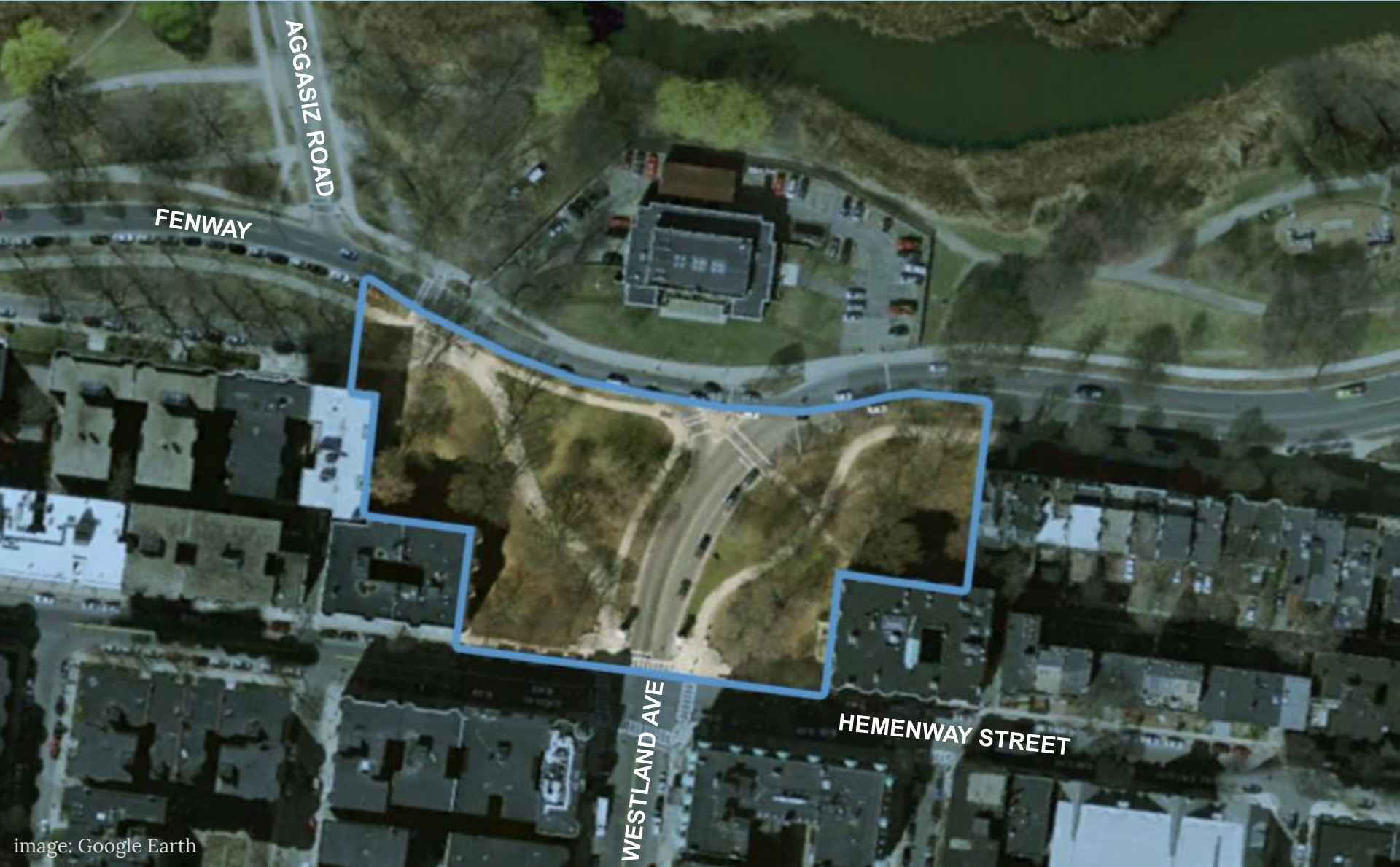
Stone Conservator

Building & Monument Conservation,
Arlington, MA

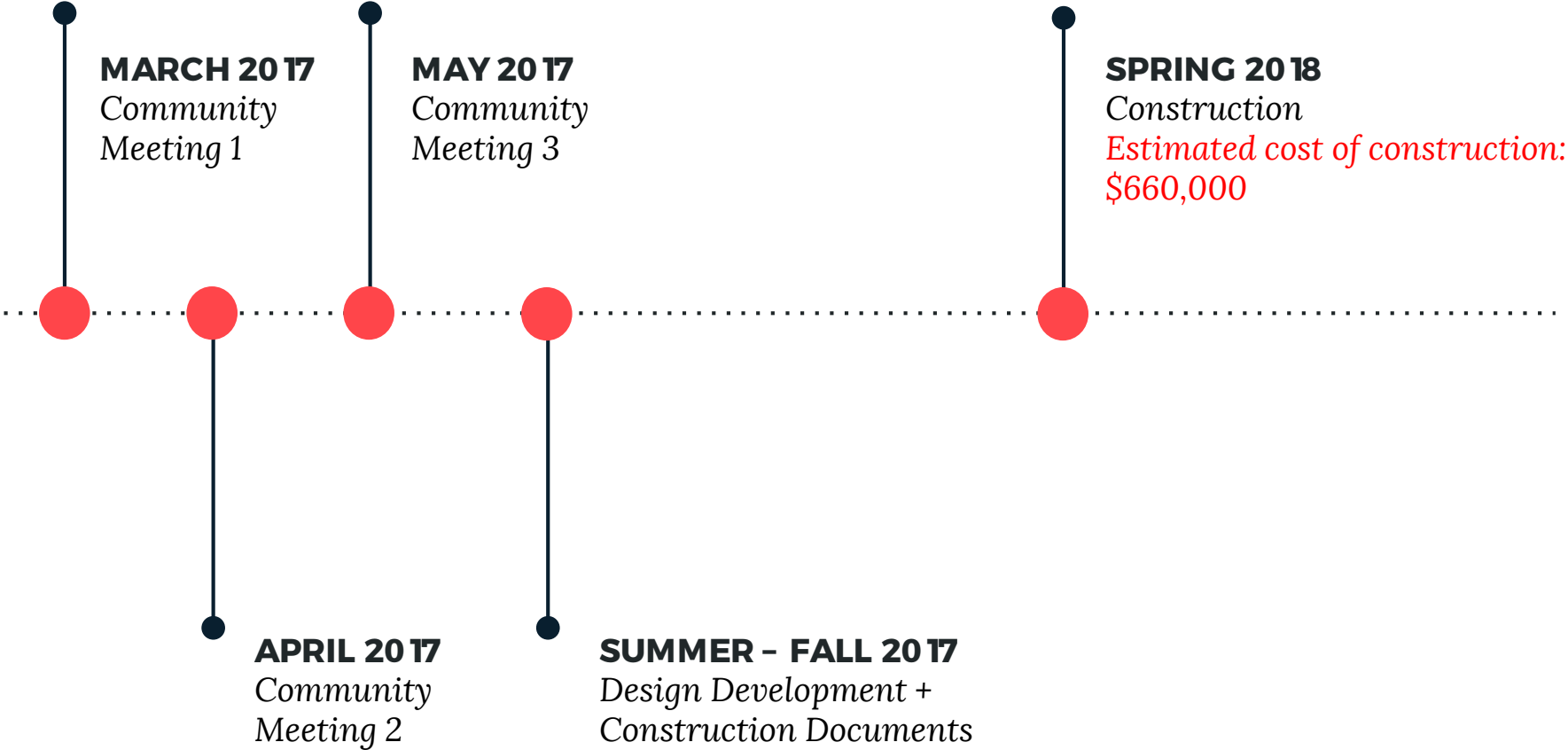
Ivan Myjer



PROJECT OVERVIEW



PROJECT SCHEDULE & FUNDING



PARK & RECREATION GOALS

- **Preserve and protect existing trees**
- **Expand usable park area**
- **Improve universal access**
- **Enhance park visibility**
- **Improve park access**
- **Design flexible, multi-functional park spaces**





City of Boston
Initiatives

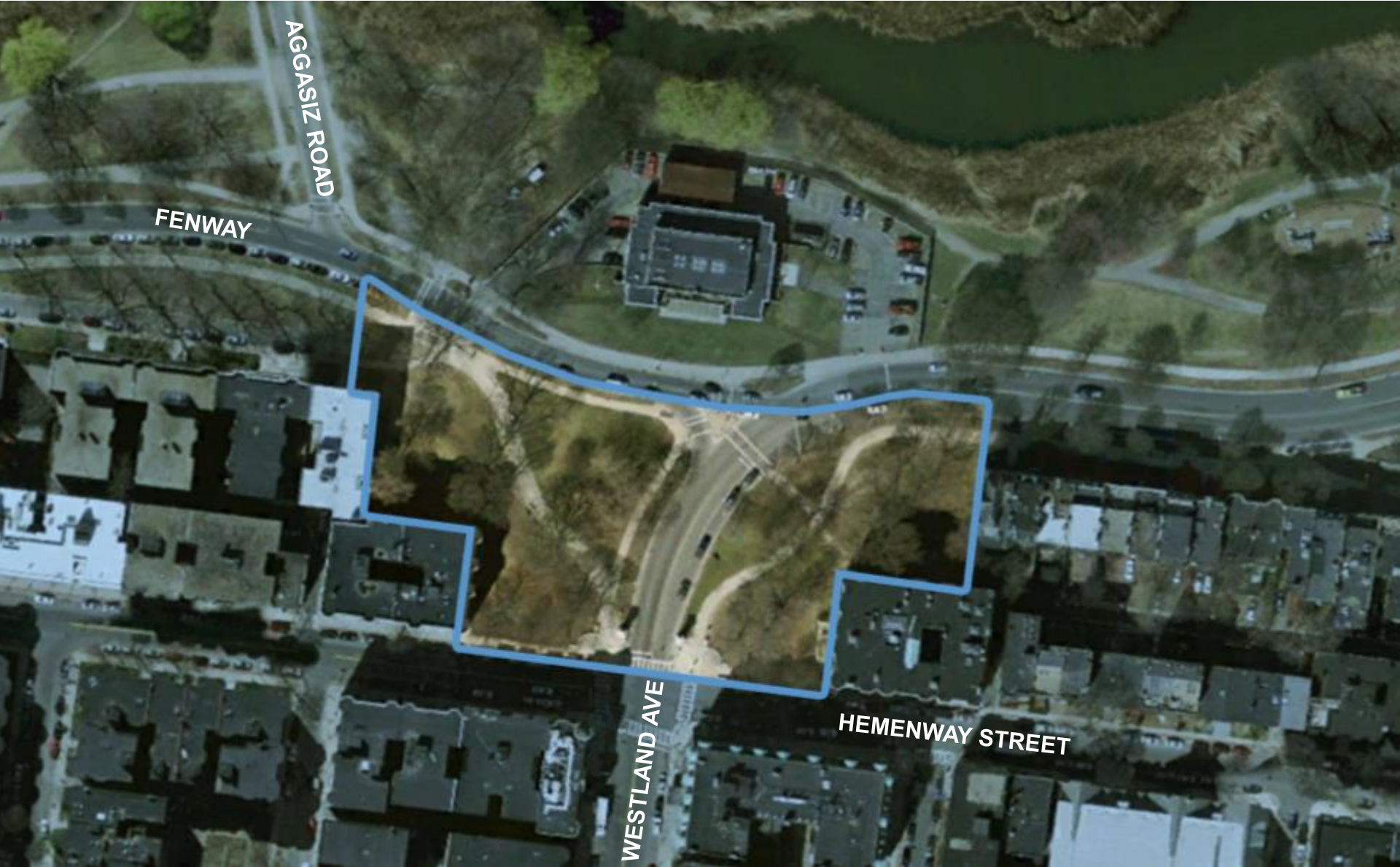
Safety Guidelines+
Environmental
Regulations

**PARK
DESIGN**

Parks + Recreation
Goals

Community
Input

LIMITS OF SITE



AGGASIZ ROAD

FENWAY

WESTLAND AVE

HEMENWAY STREET

PROJECT GOALS

The scope of the design work includes:

- the **conservation** of the Johnson Gates, associated walls, stone work, and horse troughs on Hemenway Street
- the historic study and possible re-alignment of the **pathway systems** in the study area, with particular focus on **accessibility**
- **fencing** repair or replacement, and
- evaluation and restoration of the **lawn** areas and **trees** within the defined scope of work

SITE HISTORY



SITE HISTORY



70139 ENTRANCE TO FENS, HEMENWAY ST., BOSTON, MASS.

SITE INVENTORY & ANALYSIS

INVENTORY & ANALYSIS



INVENTORY & ANALYSIS



Shrub Planting
4.11.2017

Observed Bike Circulation
Westland Ave Gateway Back Bay Fens
Scale 1"=100'-0"

INVENTORY & ANALYSIS



INVENTORY & ANALYSIS



INVENTORY & ANALYSIS



path inventory / accessibility

INVENTORY & ANALYSIS



INVENTORY & ANALYSIS



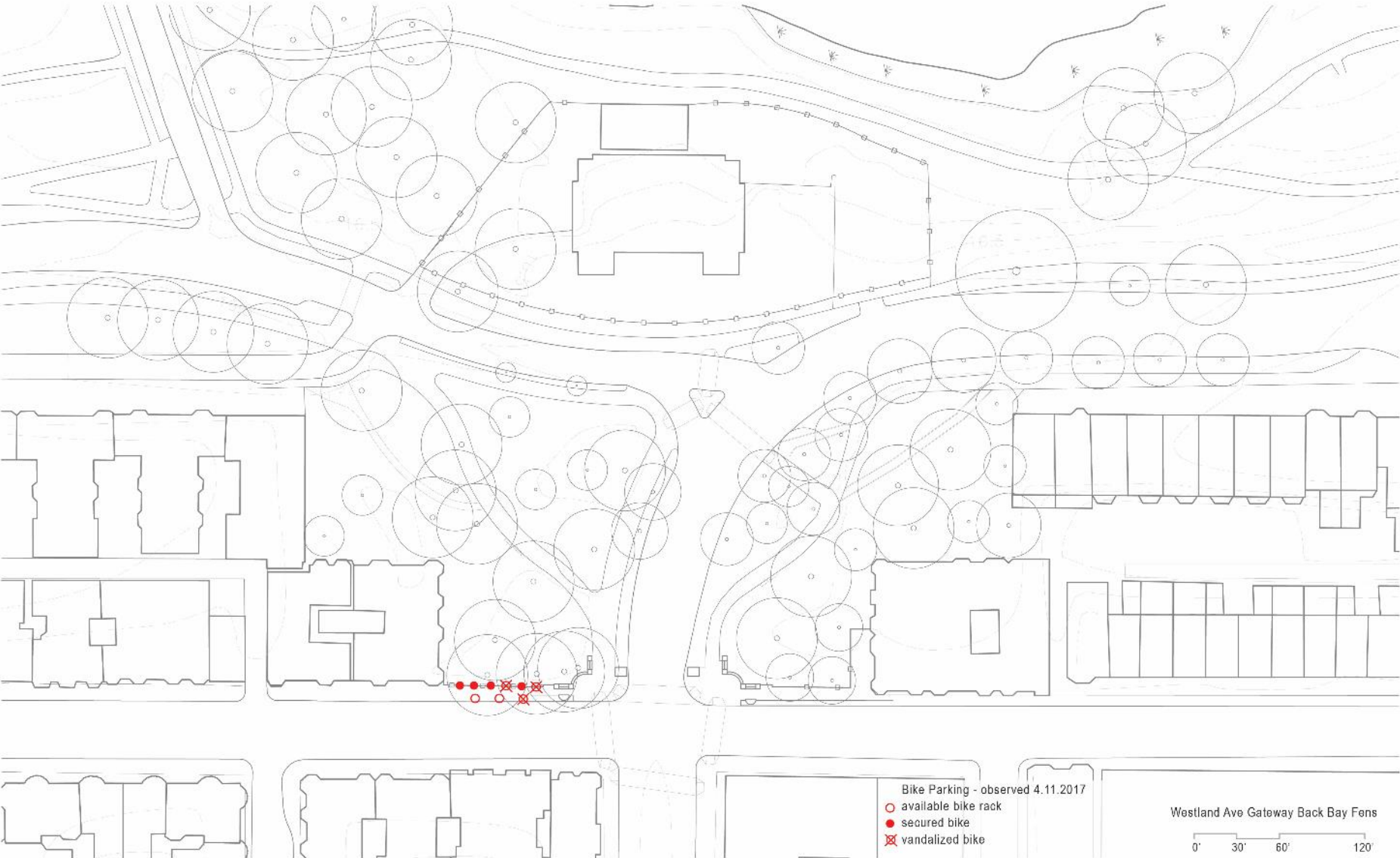
morning - circulation

INVENTORY & ANALYSIS



afternoon - circulation

INVENTORY & ANALYSIS

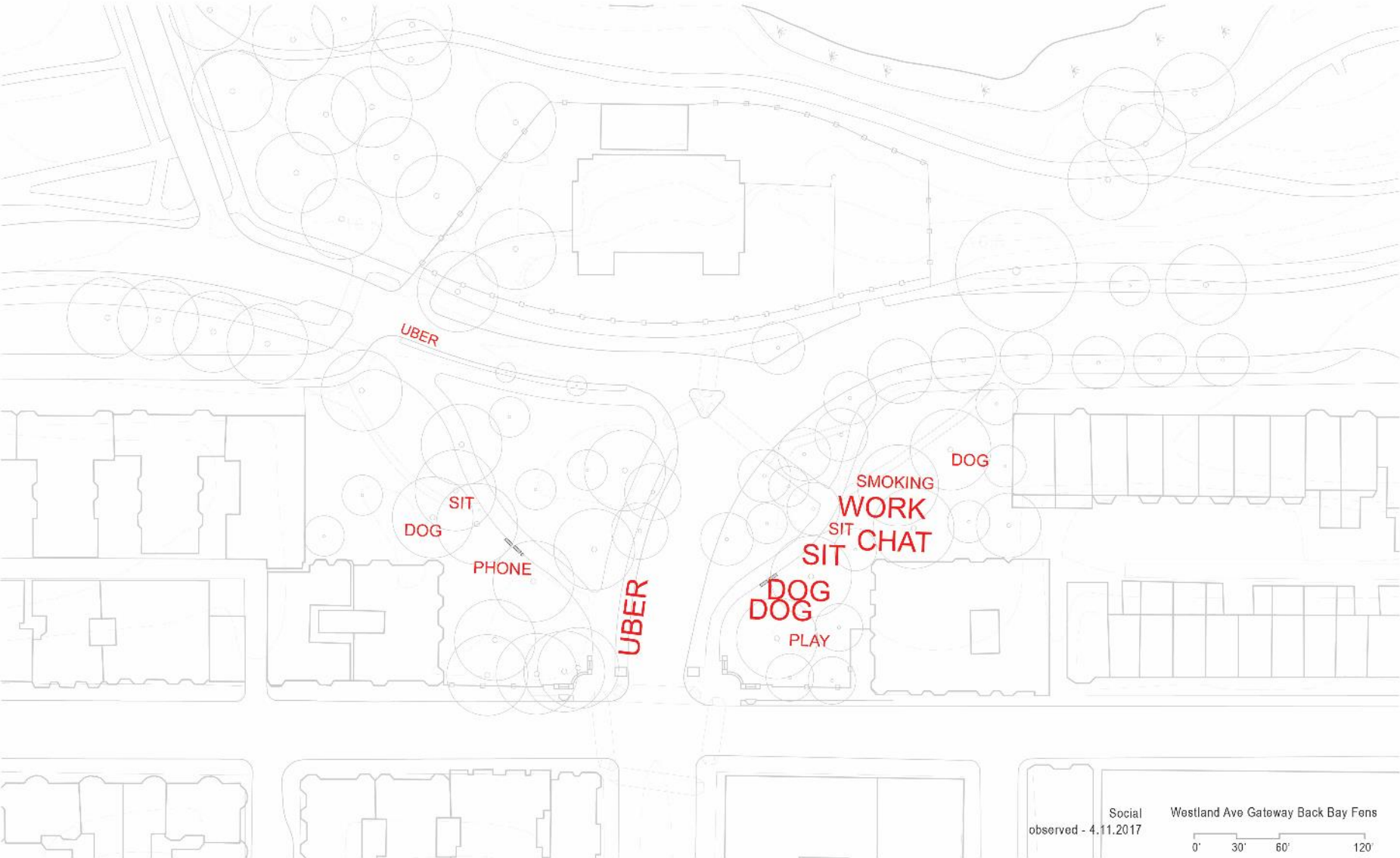




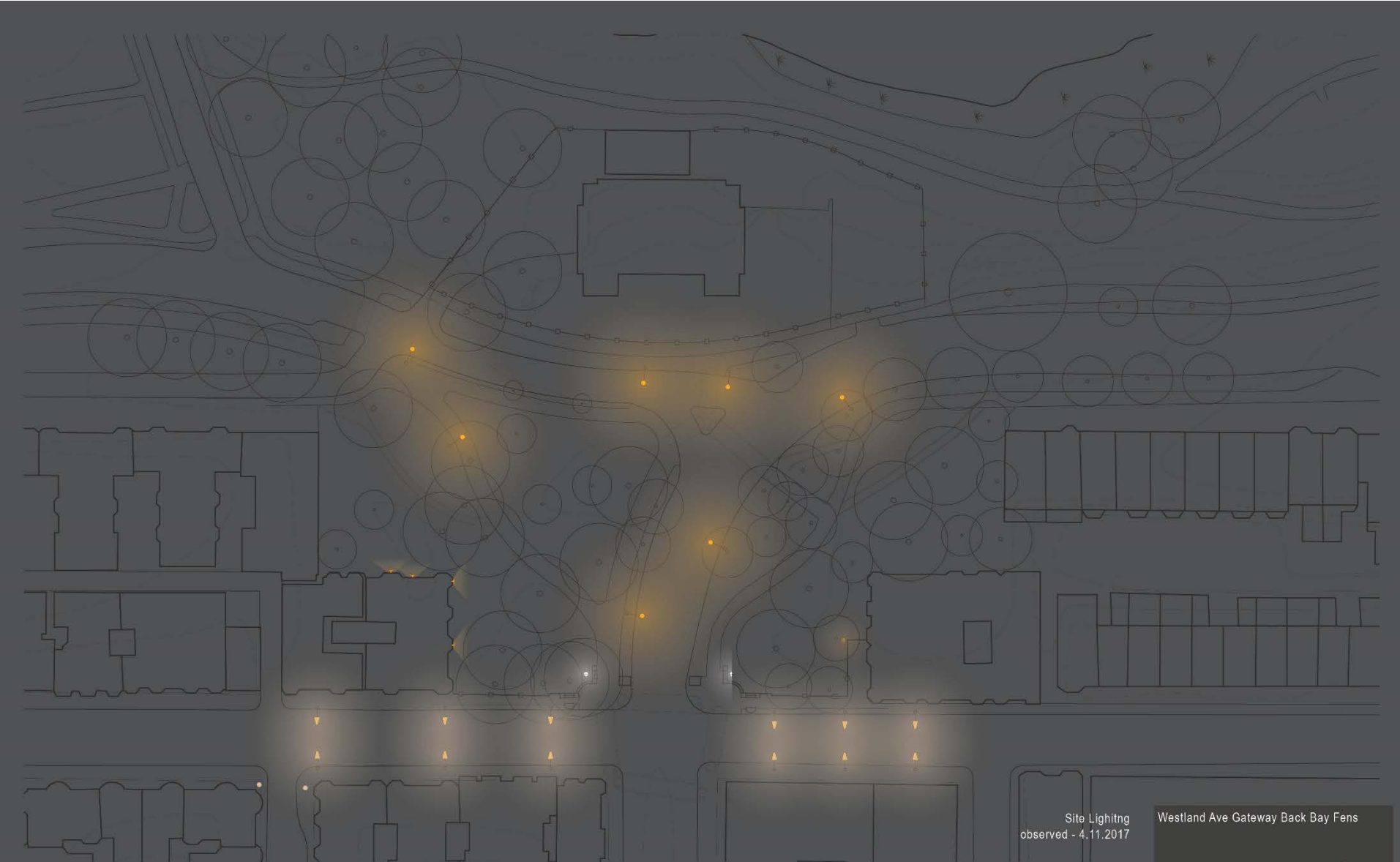
MASSACHUSETTS
47R R80
The Spirit of Massachusetts



INVENTORY & ANALYSIS



INVENTORY & ANALYSIS



BUFFER PLANTING

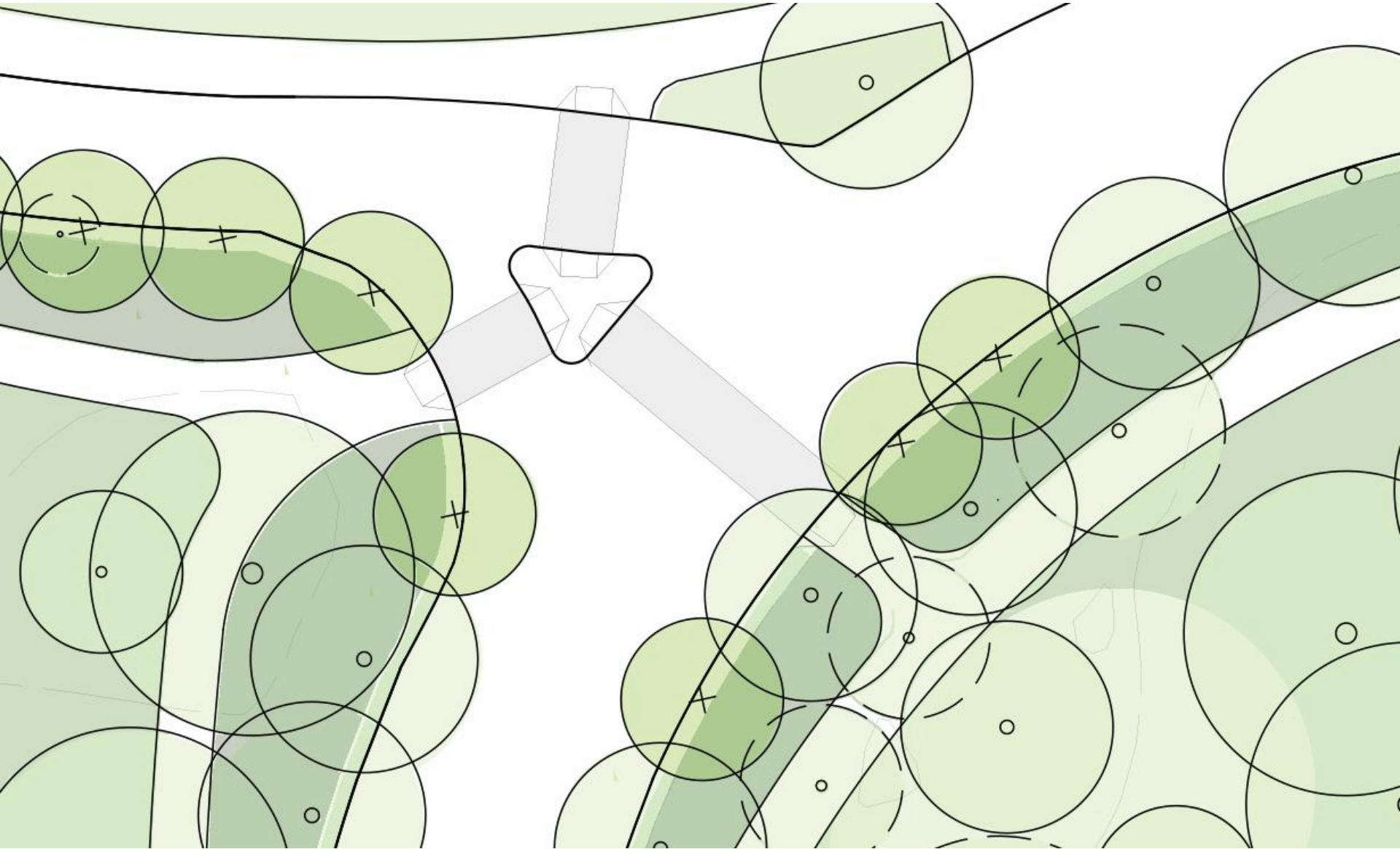
BUFFER PLANTING



176 cars
28 people

visual pollution

BUFFER PLANTING



buffer planting

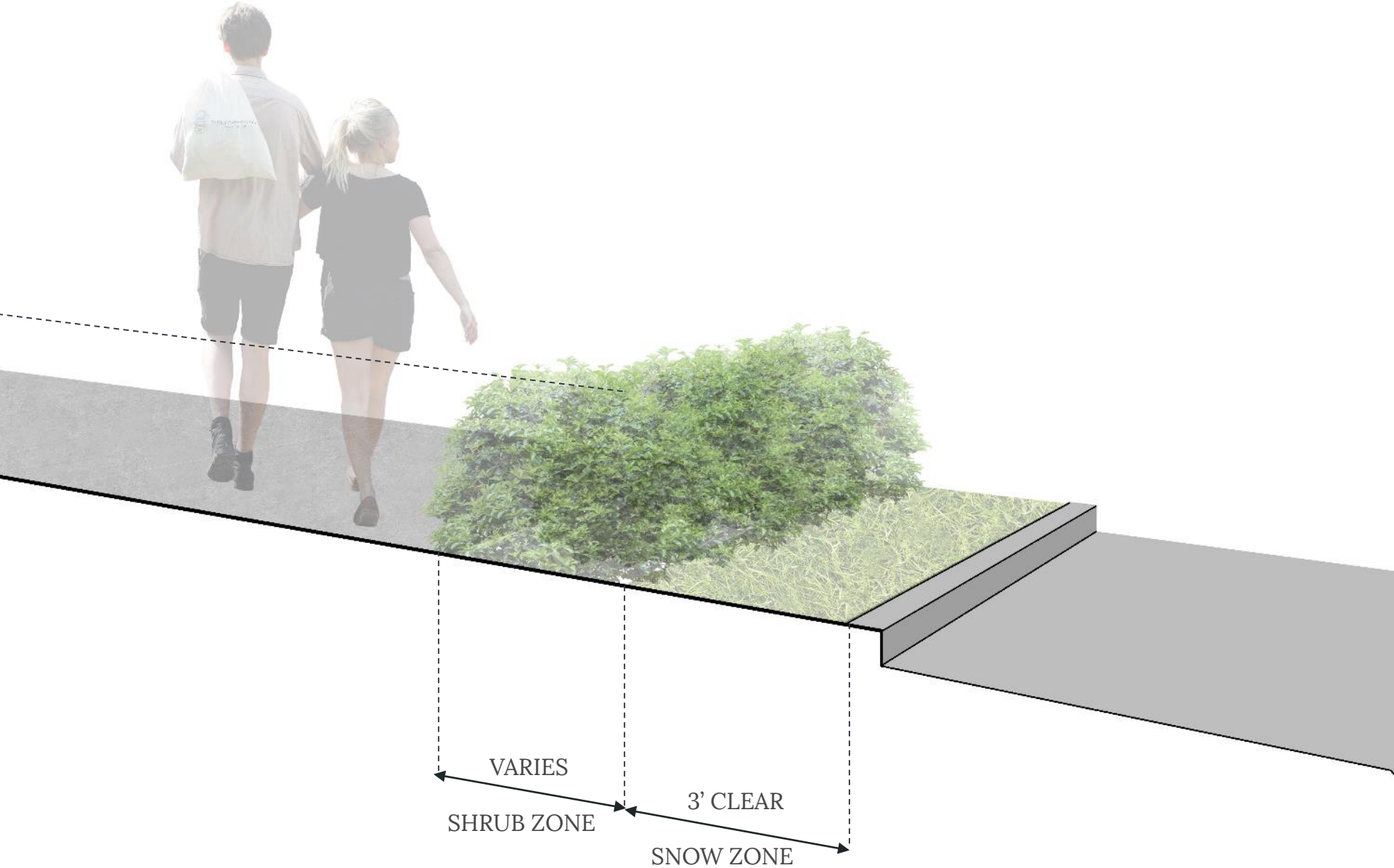
BUFFER PLANTING



BUFFER PLANTING



BUFFER PLANTING



buffer planting

LAWN PLANTING

LAWN PLANTING







CROSS WITH CAUTION
DO NOT START
IF POSSIBLE
DO NOT CROSS

VARIETY

LAWN PLANTING



LAWN PLANTING



Soil Test Interpretation

Nutrient	Very Low	Low	Optimum	Above Optimum
Phosphorus (P):	[Progress bar from Very Low to Optimum]			
Potassium (K):	[Progress bar from Very Low to Low]			
Calcium (Ca):	[Progress bar from Very Low to Very Low]			
Magnesium (Mg):	[Progress bar from Very Low to Low]			

Sample ID: S1

Lab Number S170414-325



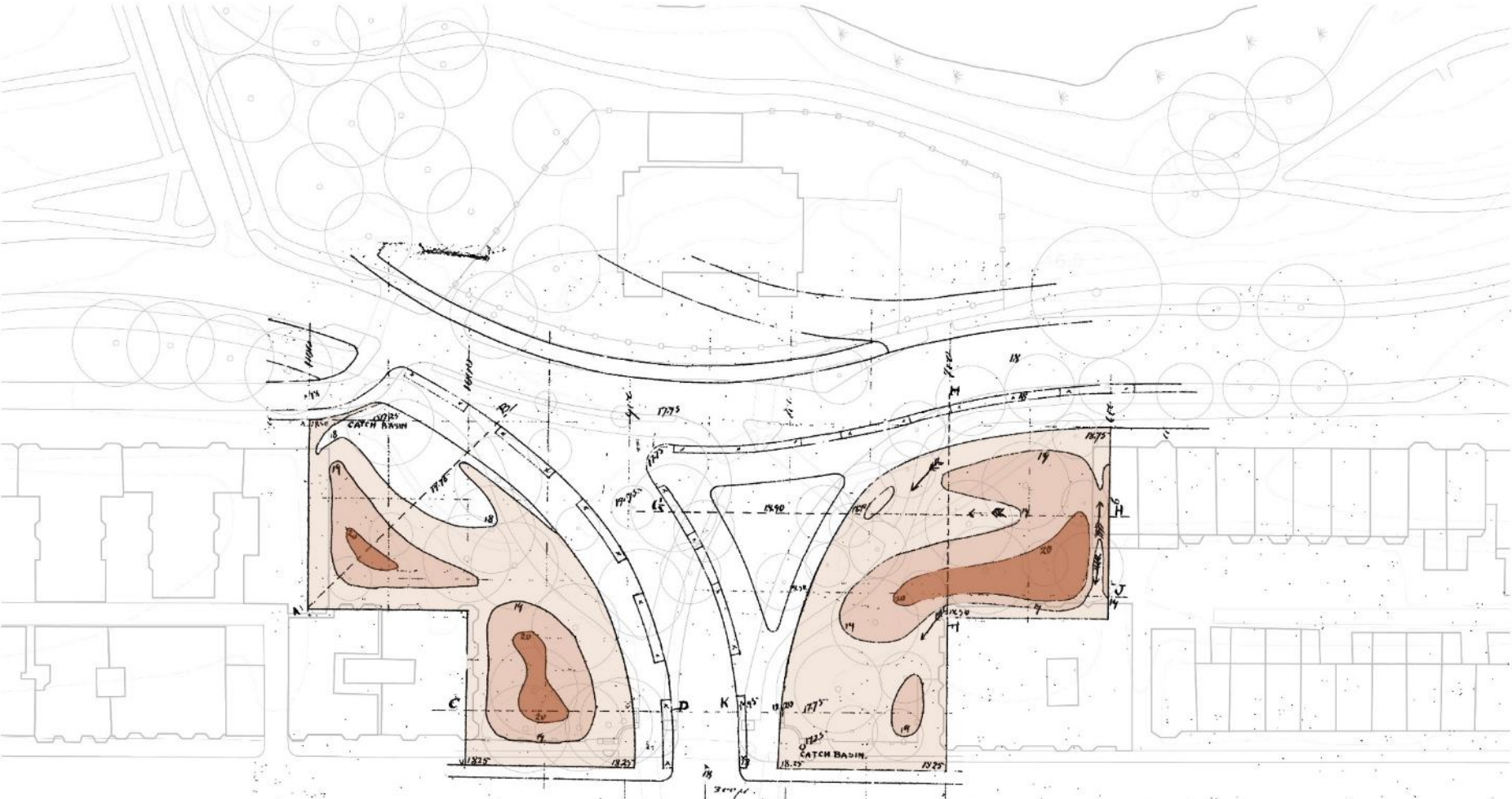
Soil Test Interpretation

Nutrient	Very Low	Low	Optimum	Above Optimum
Phosphorus (P):	[Progress bar from Very Low to Optimum]			
Potassium (K):	[Progress bar from Very Low to Optimum]			
Calcium (Ca):	[Progress bar from Very Low to Low]			
Magnesium (Mg):	[Progress bar from Very Low to Optimum]			

Sample ID: S4

Lab Number S170414-328

LAWN PLANTING



BACK BAY
PLAN FOR GRADING AT
WESTLAND ENTRANCE

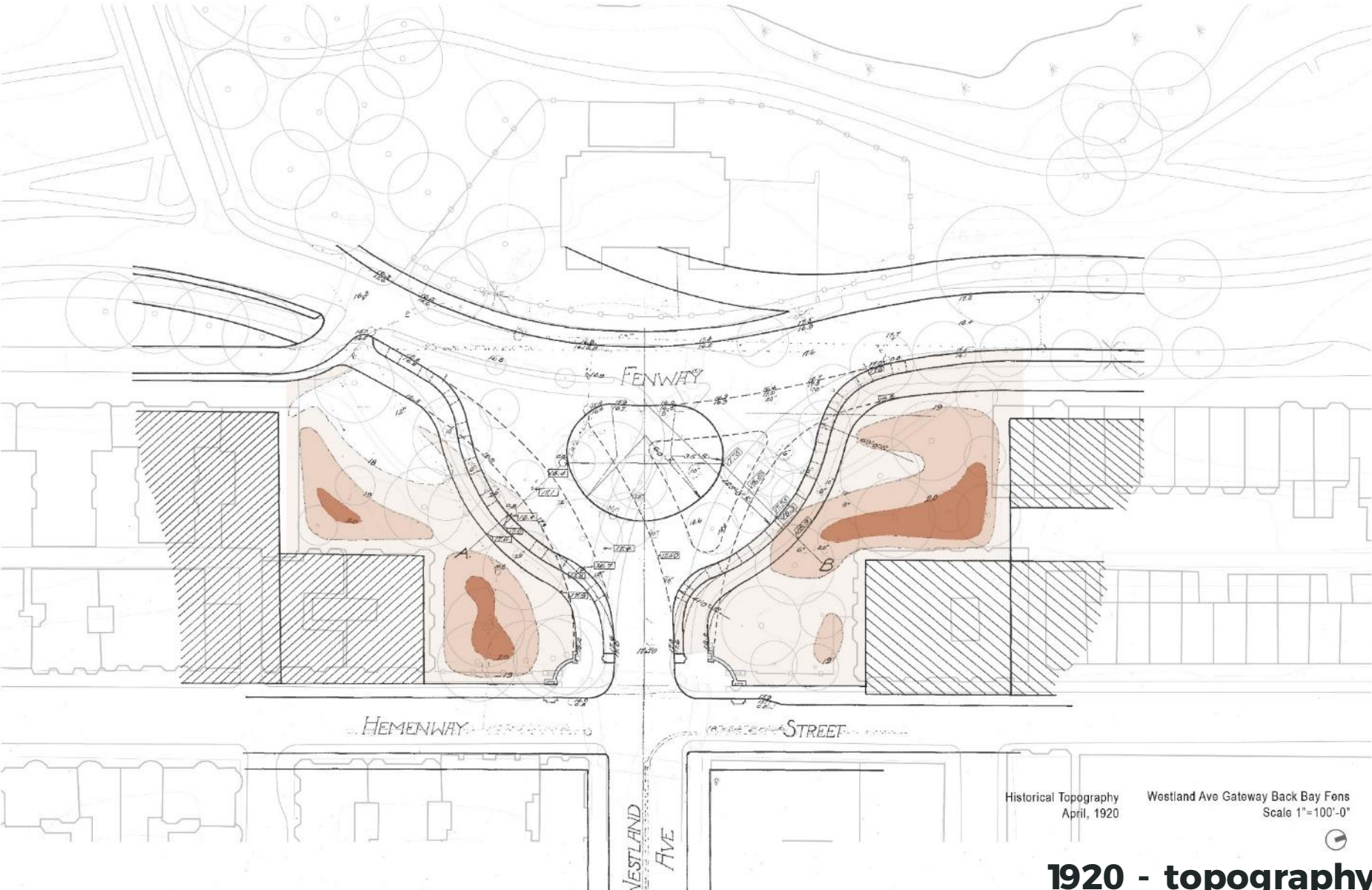
SCALE 40 FT = 1 IN

Historical Topography
Dec. 1884

Westland Ave Gateway Back Bay Fens
Scale 1"=100'-0"

F. L. OLMS FID., LANDSCAPE ARCHITECT & ADVISORY.
16TH DEC. 1884.

LAWN PLANTING



LAWN PLANTING



simple curb



cobble strip



post + chain

lawn/ path edging

MULTIMODAL DESIGN





MULTIMODAL DESIGN

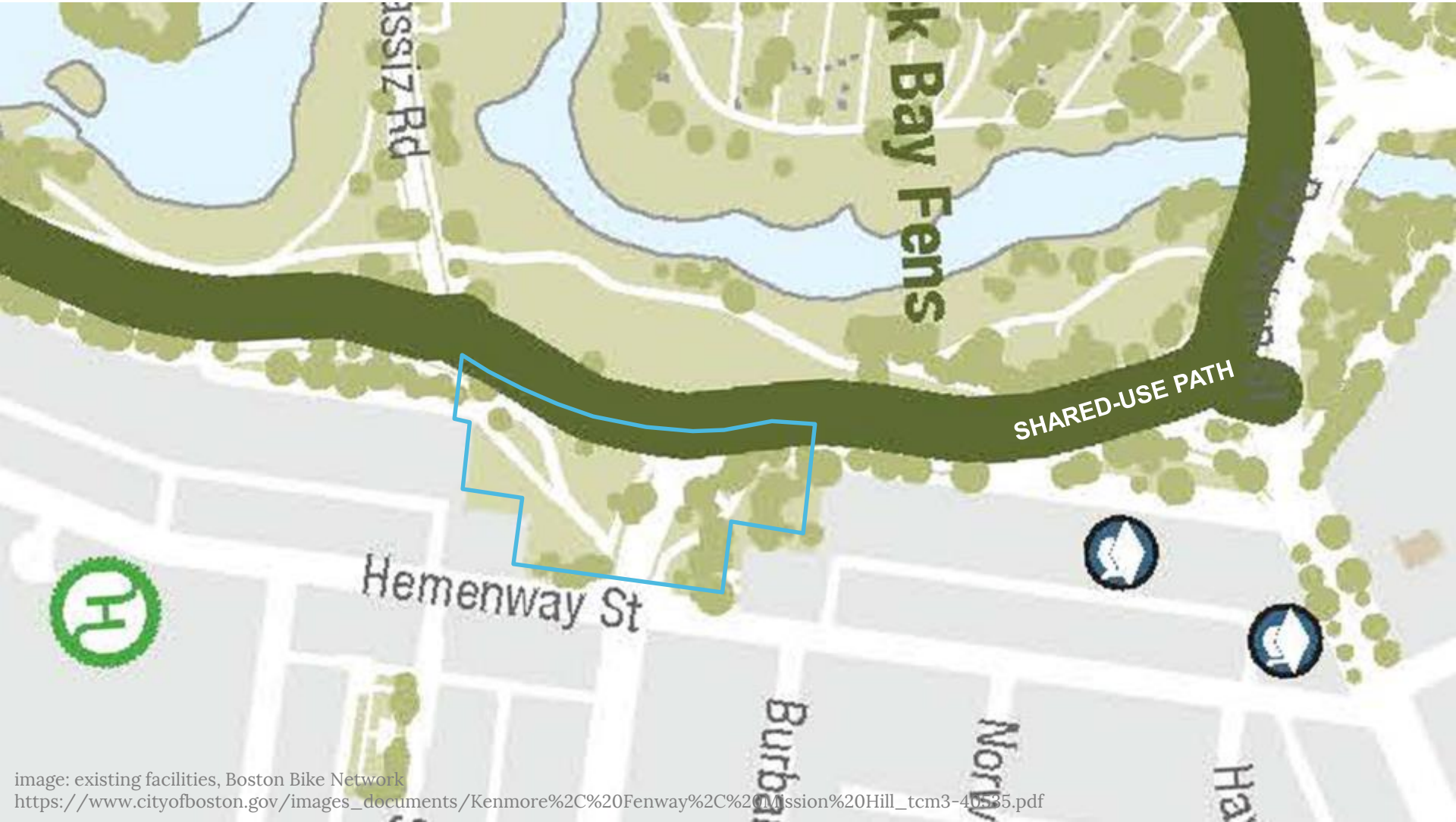


image: existing facilities, Boston Bike Network
https://www.cityofboston.gov/images_documents/Kenmore%2C%20Fenway%2C%20Mission%20Hill_tcm3-40535.pdf

MULTIMODAL DESIGN

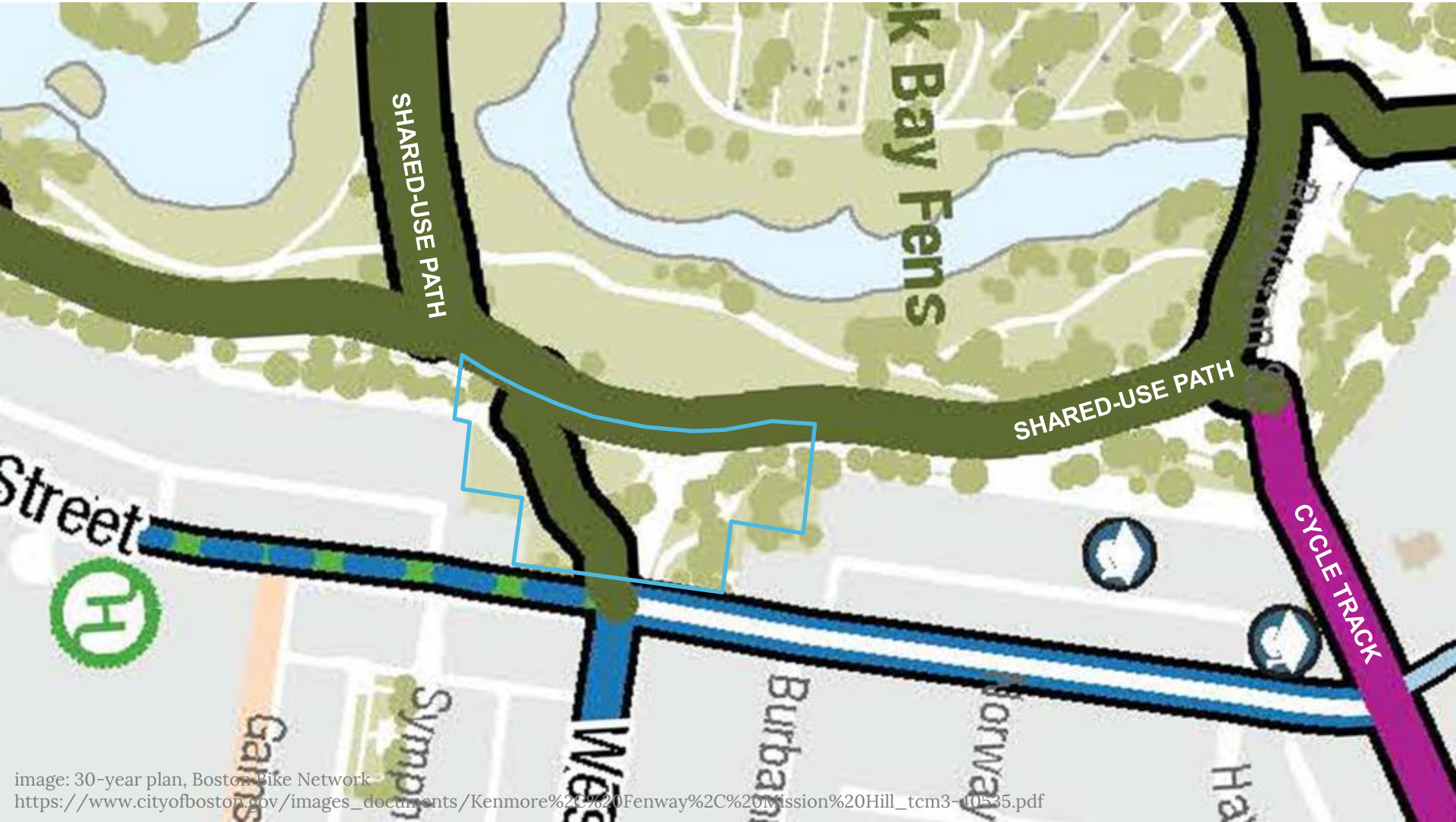


image: 30-year plan, Boston Bike Network
https://www.cityofboston.gov/images_documents/Kenmore%2C%20Fenway%2C%20Mission%20Hill_tcm3-40535.pdf

MULTIMODAL DESIGN



Morning
9:00 - 9:30 am
observed - 4.11.2017

Westland Ave Gateway Back Bay Fens
Scale 1"=100'-0"

combined circulation

MULTIMODAL DESIGN



morning - bicycle circulation

MULTIMODAL DESIGN



afternoon - bicycle circulation

MULTIMODAL DESIGN



The 606 Trail, Chicago, IL

shared multi-use path (14'-width)

MULTIMODAL DESIGN



The 606 Trail, Chicago, IL
image: Nancy Stone

shared multi-use path (14'-width)

MONUMENT CONSERVATION

CONSERVATION OF THE JOHNSON GATES

Conditions Assessment and Treatment Recommendations for the Masonry Components of the Johnson Gates Boston



Completed for:
Ms. Marie Fukuda
Fenway Civic Association, Inc.
Box 230435, Astor Station
Boston, MA 02123

Completed by:
Ivan Myjer
Lead Conservator
Building and Monument Conservation
83 School Street
Arlington, Ma 02476
617 834-3908
myjer.ivan@ren.com

December 6, 2013

Johnson Gates- North and South Piers Construction

The upper section of the piers consists of an enormous cap stone set on top of the cornice which consists of small units. The entablature stone under the bronze work is a single unit of stone.

The mortar joints in the two courses of the cornice are completely open. The entablature stone on each pier is cracked in several locations but the cracks are not structural.



Building and Monument Conservation

1

South Trough

**View of interior of south trough
with dutchman repair.**

**Exterior view of the same dutchman repair
which is now damaged from impact.**



Building and Monument Conservation

10

CONSERVATION OF THE JOHNSON GATES

ANTICIPATED SCOPE: PIERS	THIS PROJECT	TBD	NOT IN SCOPE
100% mortar repointing; removal/replacement of existing grouts			
install lead "T" caps on skyward mortar joints			
clean biological growths / sulfate stains			
remove/replace prior patches			
"dutchman" repairs on large areas of loss; ignore small areas of loss, divots			
replace missing fountain basin cover (south pier)			
remove/reattach cracked basin			
reset granite pavement slabs			
police detail (minor)			
police detail (major)			
remove ferrous plumbing components			
full takedown/reconstruction of piers			
restoration of fountain (plumbing)			

CONSERVATION OF THE JOHNSON GATES

ANTICIPATED SCOPE: TROUGHS	THIS PROJECT	TBD	NOT IN SCOPE
remove stone basin lids, remove interior sand & debris	COMPLETE		
enlargement of drainage holes, installation of drain screens			
clean/cinch/epoxy large crack (north trough)			
replace stone basin lids; support, shim & seal			
remove/replace prior “dutchman” repair (south trough)			
fill areas of loss with tinted patching material, small dutchman			
reset granite pavement slabs			
correct tilt of base with new footing (north trough only)			
relocate/protect troughs from vehicular damage			

CONSERVATION OF THE JOHNSON GATES

ANTICIPATED SCOPE: BALUSTRADES & BENCHES	THIS PROJECT	TBD	NOT IN SCOPE
100% mortar repointing; remove/replace existing grouts	■		
clean biological growths / sulfate stains	■		
grout cracks and small areas of loss	■		
“dutchman” repairs on large areas of loss (qty. 6 in project)	■		

PRELIMINARY DESIGN CONCEPTS

DESIGN CONCEPTS



DESIGN CONCEPTS



scheme 1 - reinforce Shurcliff

DESIGN CONCEPTS



scheme 2 - mirror Olmsted

DESIGN CONCEPTS



scheme 3 - modify Olmsted



LISTENING & DISCUSSION

Help us build great parks.
Let us know what matters to you.



THANK YOU!

Cathy Baker-Eclipse, Project Manager
Cathy.Baker-Eclipse@boston.gov or 617-961-3058

Marchelle Jacques-Yarde, Outreach Coordinator, External Affairs
marchelle.jacques-yarde@boston.gov or 617-961-3006

For questions, maintenance requests or concerns regarding any of our parks
contact 311



SITE AERIAL

