

Improvements to **PARKMAN PLAYGROUND**

Wachusett St

Barlow St

Parkman Playground



PROJECT OVERVIEW



PROJECT
AREA

Wachusett St

Barlow St

Parkman Playground

AGENDA

1

PROJECT TEAM INTRODUCTION

2

PROJECT OVERVIEW

3

PRESENTATION

4

LISTENING & DISCUSSION

5

CLOSING REMARKS & NEXT STEPS

PROJECT TEAM

Nathan Frazee

Project Manager

nathan.frazee@boston.gov or 617-961-3167

Marchelle Jacques-Yarde

Outreach Coordinator, External Affairs

marchelle.jacques-yarde@boston.gov or
617-961-3006

Joshua Burgel

Senior Associate, Crosby Schlessinger Smallridge

Samuel Basta

Landscape Architectural Designer, Crosby Schlessinger
Smallridge

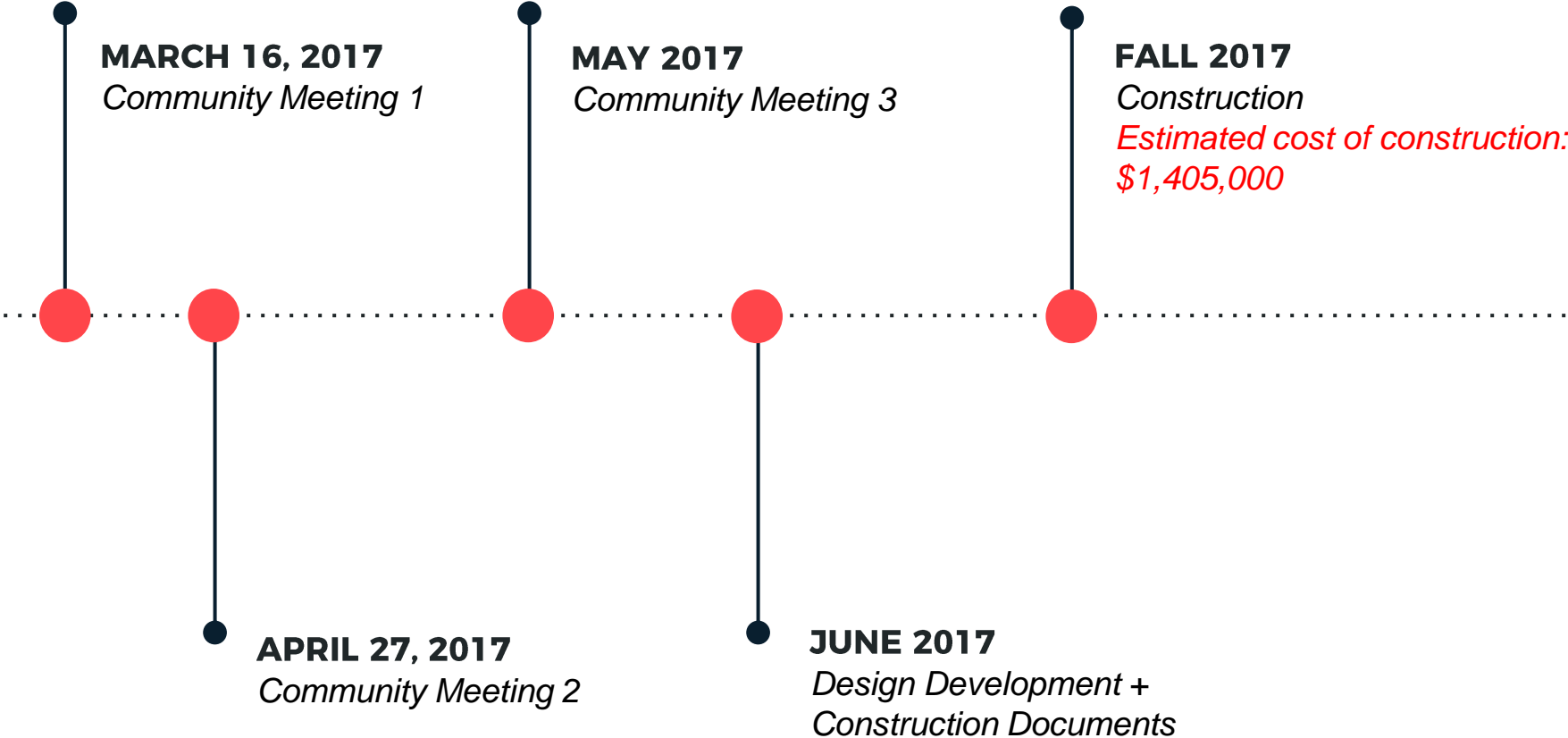
Alexandra Valdez

Office of Neighborhood Services

alexandra.valdez@boston.gov or 617-635-2185



PROJECT SCHEDULE & FUNDING





City of Boston
Priorities

Safety Guidelines+
Regulatory
Guidelines

**PARK
DESIGN**

Parks + Recreation
Goals

Community
Input

CITY OF BOSTON PRIORITIES

- **Expanding walkable access to parks**
- **Addressing equity**
- **Climate resilience**
- **Health**
- **Housing and community building**



PARK & RECREATION GOALS

- **Preserve And Protect Existing Trees**
- **Expand Usable Park Area**
- **Improve Universal Access**
- **Enhance Park Visibility**
- **Improve Access to Parks**
- **Design Flexible, Multi-functional Park Spaces**



THE **5** ELEMENTS OF PLAY



SOCIAL/ EMOTIONAL

COOPERATION, DRAMATIC +
IMAGINATIVE PLAY



SEATING + TABLE AREAS,
THEMATIC PLAY ELEMENTS
(SHIPS), PLAY HOUSES

PHYSICAL

GROSS MOTOR/ FINE MOTOR SKILLS,
FLEXIBILITY, ACCESSIBILITY,
HEALTHY RISK + VARIETY



DISH SWINGS, MOVEABLE
OBJECTS, SWINGS, MONKEY
BARS, BALANCE

SENSORY

TOUCH, VISUAL. AUDITORY, SMELL
VESTIBULAR, PROPRIOCEPTIVE +
INTEROCEPTIVE



PUSH/ PULL ELEMENTS
WATER ELEMENTS, VARIED
TEXTURES + COLORS, SPINNING,
MOVEABLE OBJECTS, ROCKING

COGNITIVE

CREATIVITY, SENSE OF
ACCOMPLISHMENT, PROBLEM-
SOLVING, CAUSE + EFFECT, RISK
ASSESSMENT



INTERACTIVE WATER ELEMENTS,
ROPE CLIMBER, LINKED PLAY
ELEMENTS

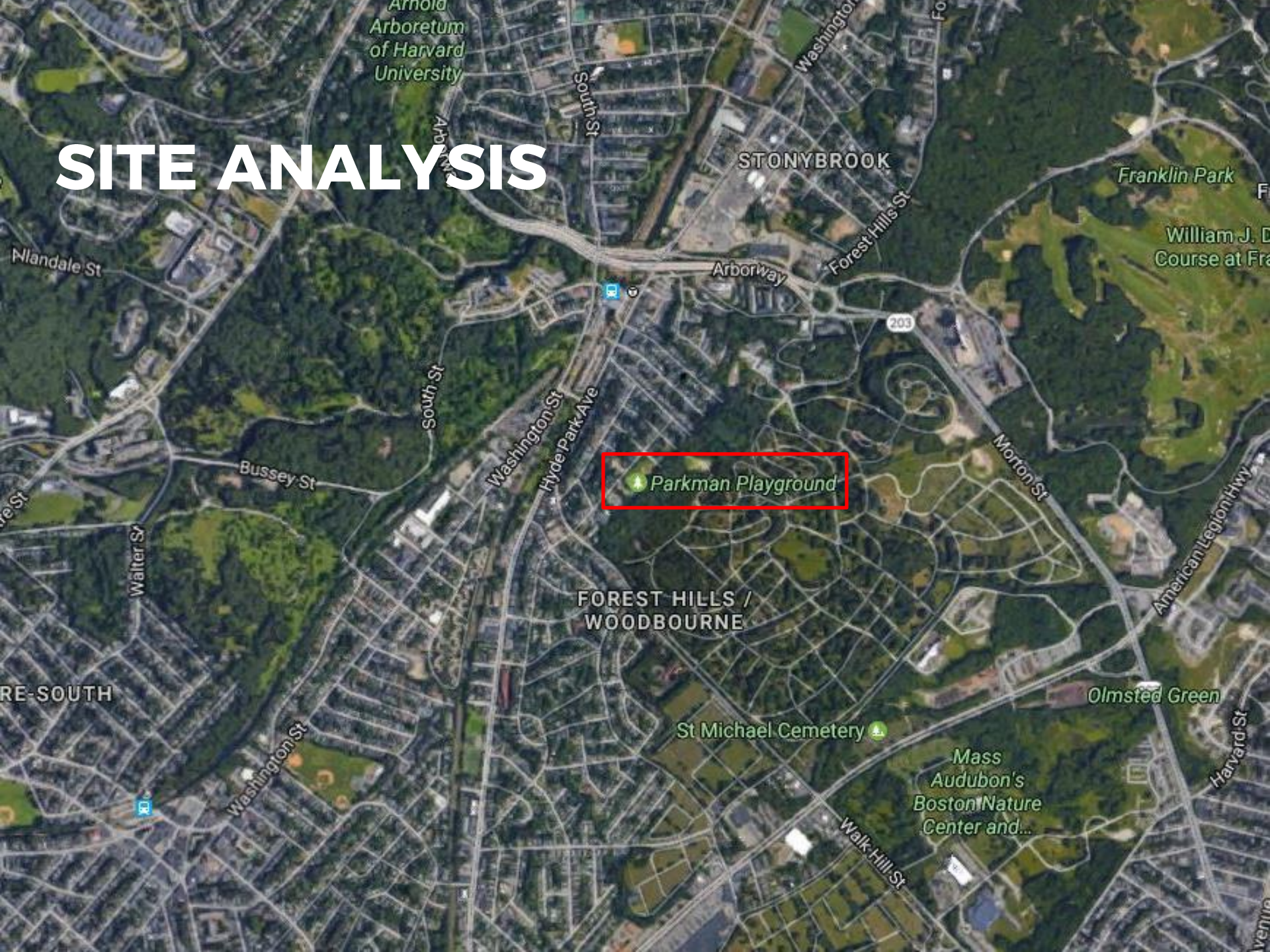
COMMUNICATION

DEVELOPMENT OF RECEPTIVE +
EXPRESSIVE LANGUAGE



TALK TUBES, SLIDES, THEMATIC
PLAY ELEMENTS, TRIKE TRACK,
SEE SAWS

SITE ANALYSIS



Parkman Playground

Arnold
Arboretum
of Harvard
University

STONYBROOK

Franklin Park

William J. D
Course at Fra

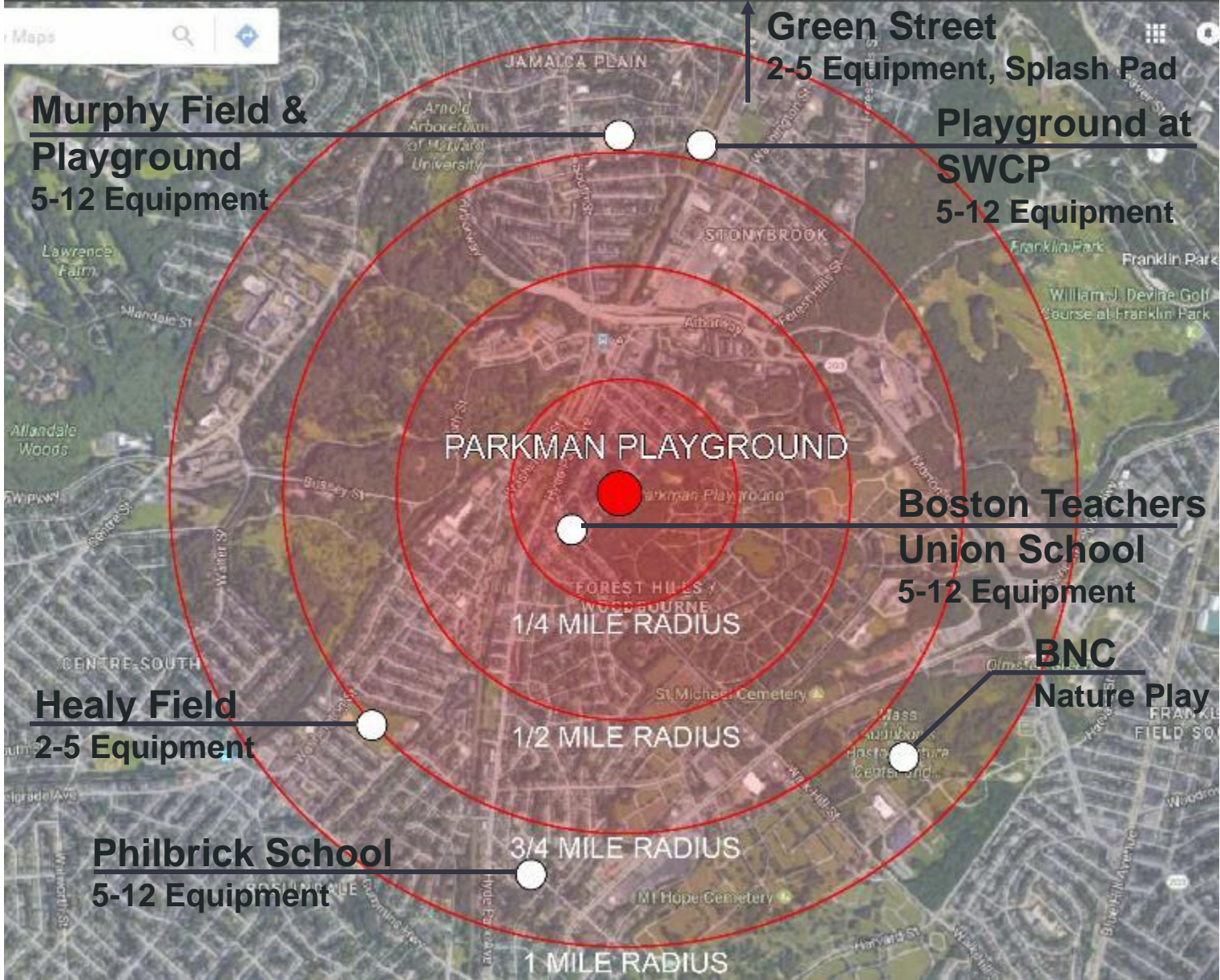
FOREST HILLS /
WOODBOURNE

St Michael Cemetery

Mass
Audubon's
Boston Nature
Center and...

Olmsted Green

LOCAL PLAYGROUNDS



PARK ACCESS



What We Learned

Meeting 1

- The park is well used and well cared for
- A playground that caters to multiple age groups is desired
- The community is open to new programming (i.e. family fitness equipment, splash pad, music)
- Site security is a concern due to nighttime activity and undesirable use

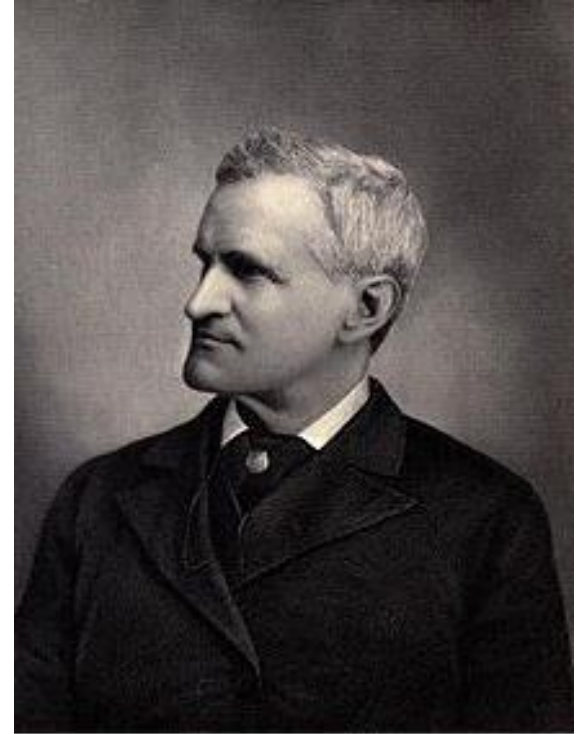
Parkman Playground

3 Concepts

- 3 different concepts engaging the information we learned from last meeting
- The three concepts explore expanding the current program and configuration of the park

“It was a rich and gorgeous sunset – an American sunset; and the ruddy glow of the sky was reflected from some extensive pools of water among the shadowy copses in the meadow below.”

--Francis Parkman



Francis Parkman, Jr.
Noted historian, horticulturalist
and adventurer

Concept 1 - Meander

Inspiration



Defined as: To wander with a sense of aimlessness over an intricate course. AKA “to play”.

© Igor De Ruitz

Concept 1 - Meander Plan

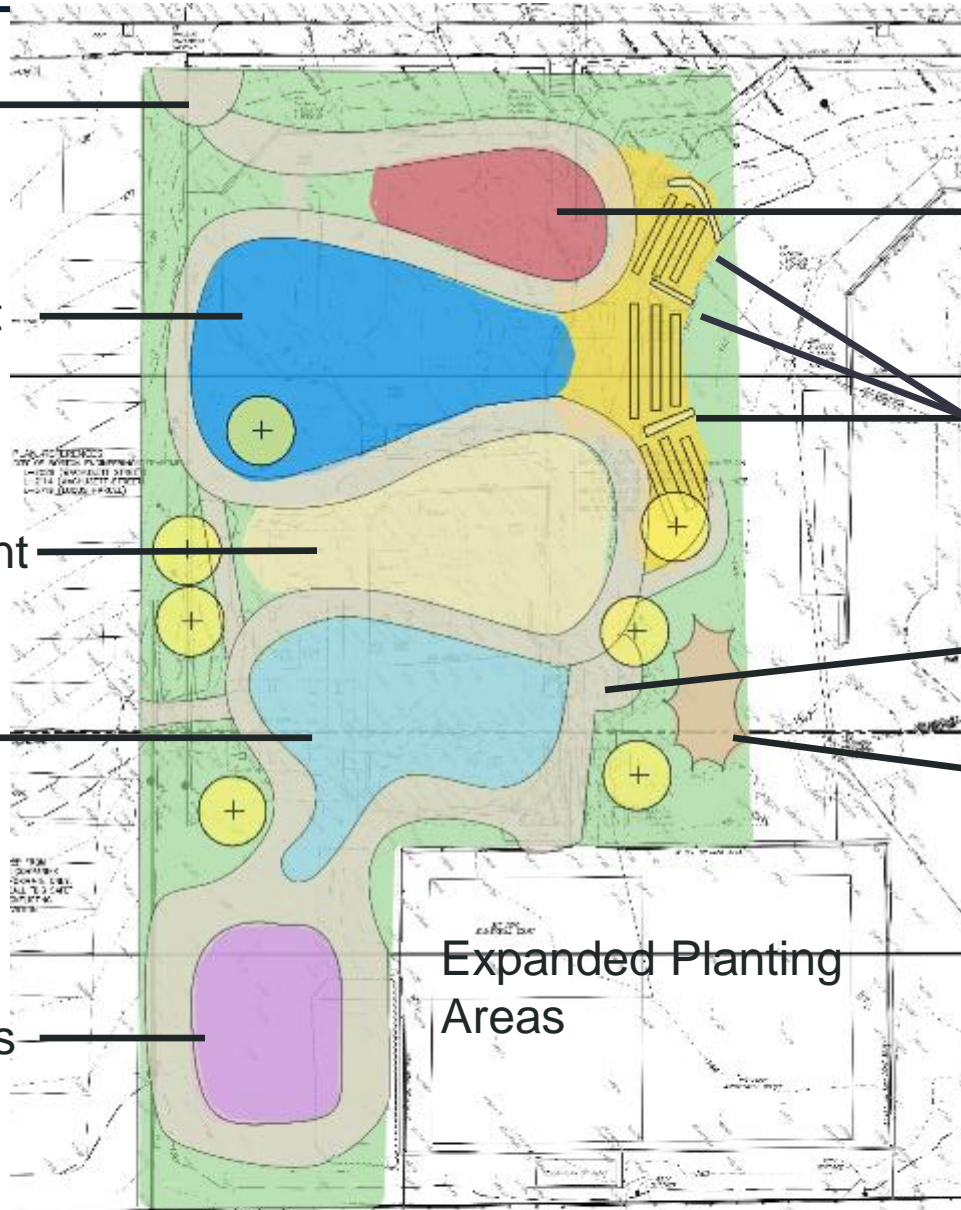
Small Entry Plaza

2-5 Play Equipment
(Room for Basket Swing)

5-12 Play Equipment

Splash Area
(Multi-Level)

Adult/Family Fitness Area



Toddler-3 Play Equipment

Accessible Slides Built into Hill

Water Fountain with Bottle Filler

Shade Structure/
Picnic Area

Expanded Planting Areas

- Paving – 32%
- Planting – 24%
- Play areas – 30.5%
 - Toddler-3 – 3.5%
 - 2-5/Swings – 11%
 - 5-12 – 8%
 - Splash – 8%
- Adult Fitness – 5%
- Shade/Picnic – 2.5%

Concept 1 - Meander

Precedents



Concept 2 - Terrain Park

Inspiration

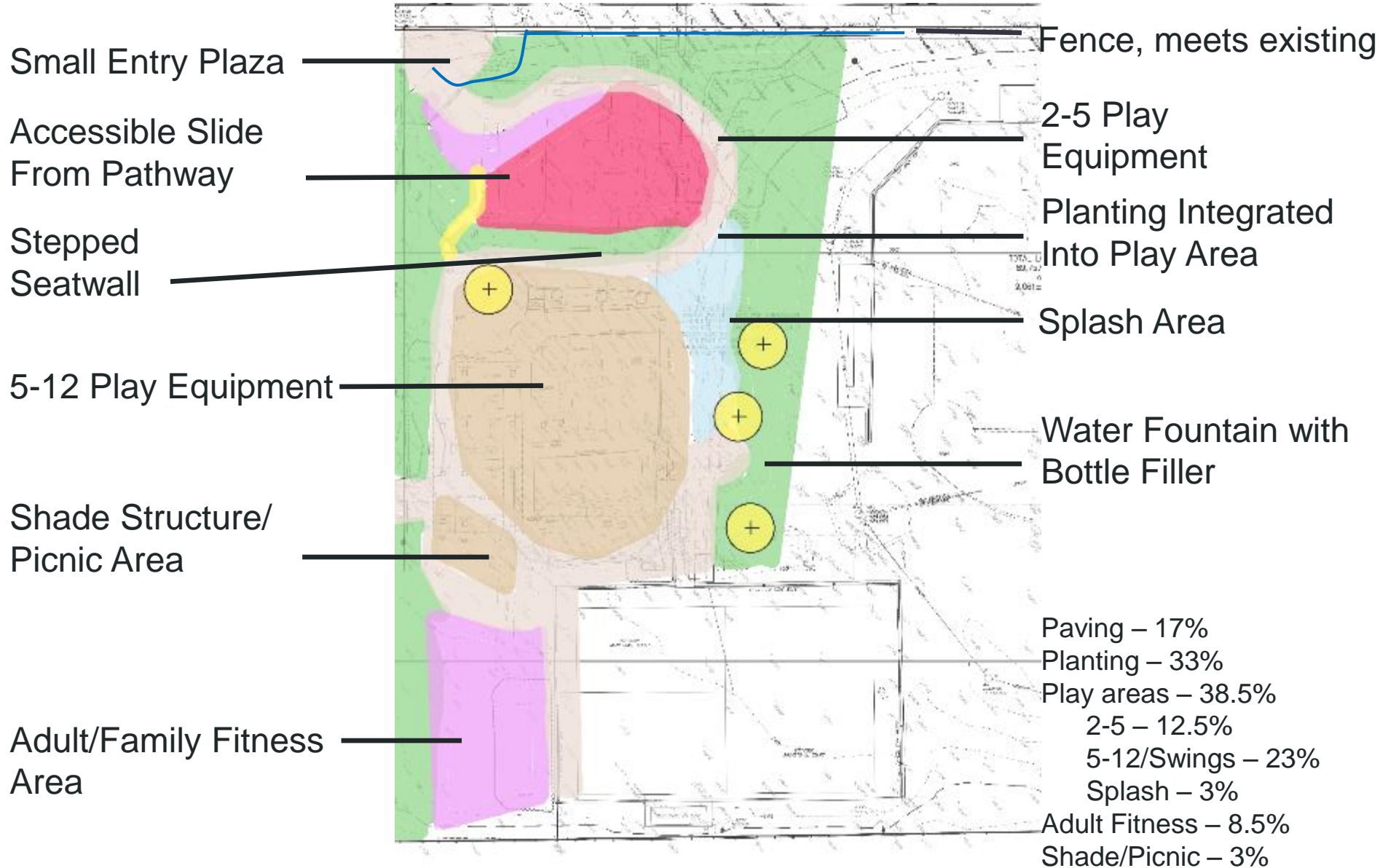


Topography forming and informing the way we play and who we can become.



Colossus of the Appenines – Villa de Pratolino, Italy

Concept 2 - Terrain Park Plan



Concept 2 - Terrain Park

Precedent



Concept 3 - Tools of Imagination and Movement

Inspiration



“America was still a land of wonder. The ancient spell still hung unbroken over the wild, vast world of mystery beyond the sea - a land of romance, adventure, and gold.”

Francis Parkman



Concept 3 - Tools of Imagination and Movement

Plan

Terraced Neighborhood Garden

Fencing, connected to existing

Seatwall
Planter

2-5 Play Equipment

Slide Mound/
Baseball Viewing Mound

5-12 Play Equipment

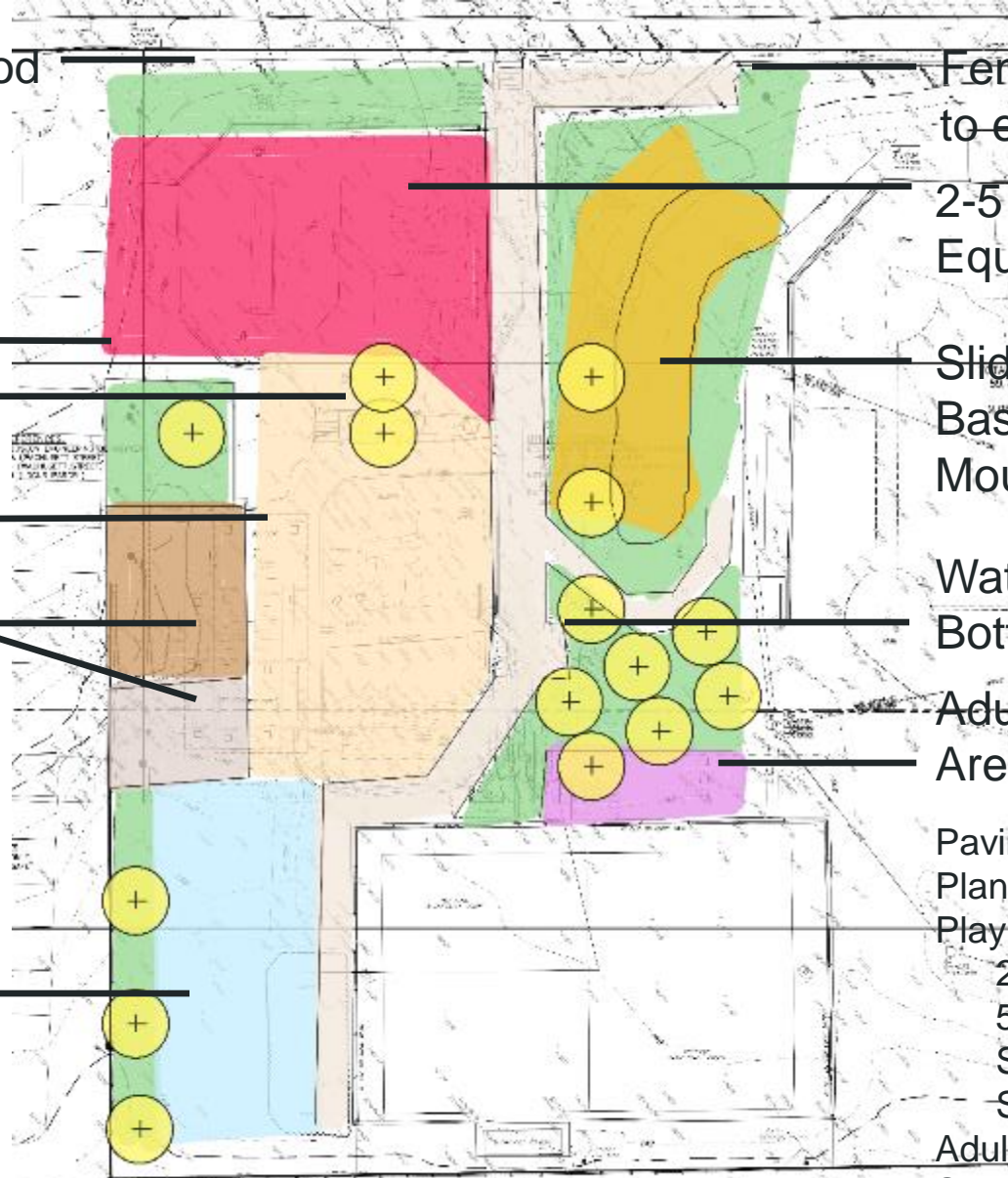
Water Fountain with
Bottle Filler

Shade Structure/
Picnic Area with
Open "Patio"

Adult/Family Fitness
Area

Splash Area

Paving – 15%
Planting – 24.5%
Play areas – 53%
2-5 – 15%
5-12 – 17%
Splash – 10%
Slide Mound – 11%
Adult Fitness – 2%
Shade/Picnic – 4.5%



Concept 3 – Tools of Imagination and Movement

Precedent



FURNISHING

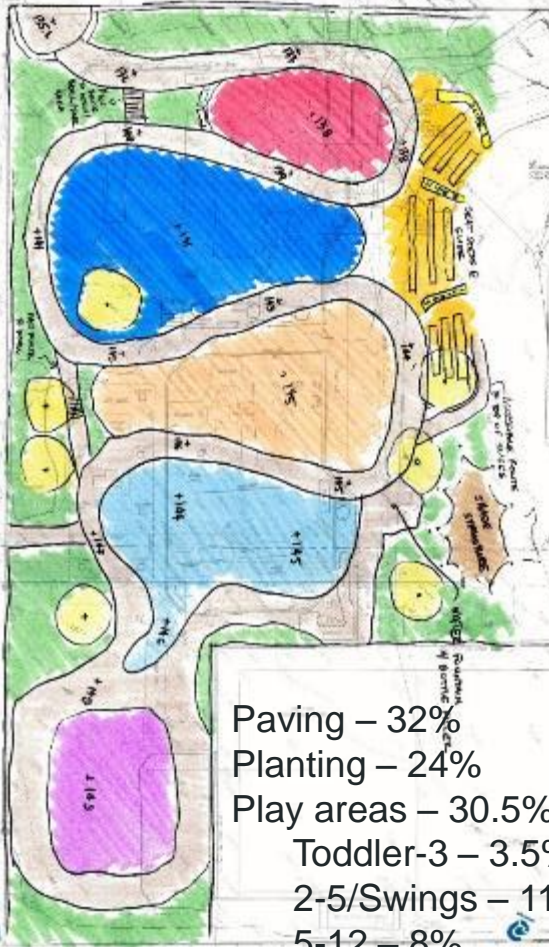


Concept Comparison

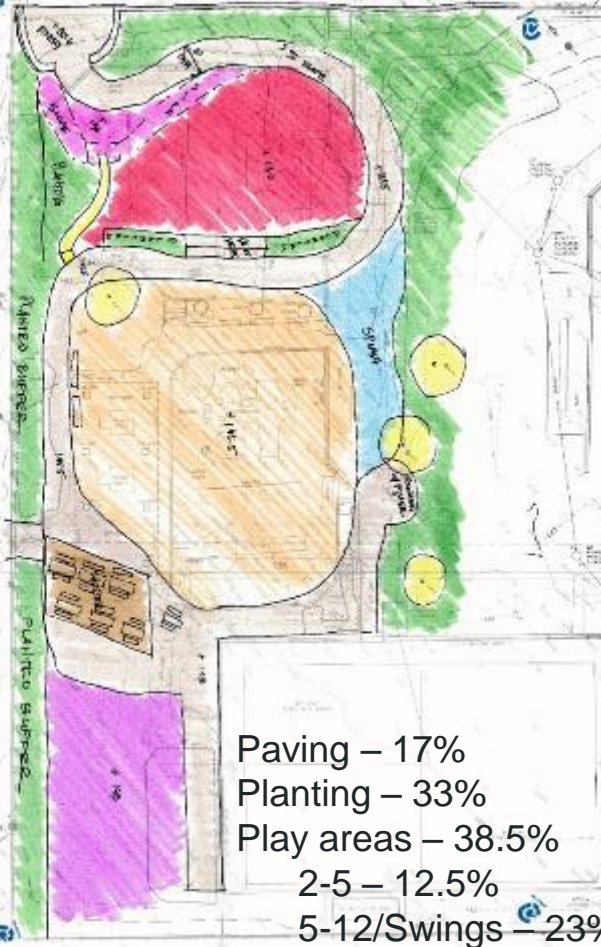
Concept 1 Meander

Concept 2 Terrain Park

Concept 3 Imagination + Movement



Paving – 32%
 Planting – 24%
 Play areas – 30.5%
 Toddler-3 – 3.5%
 2-5/Swings – 11%
 5-12 – 8%
 Splash – 8%
 Adult Fitness – 5%
 Shade/Picnic – 2.5%

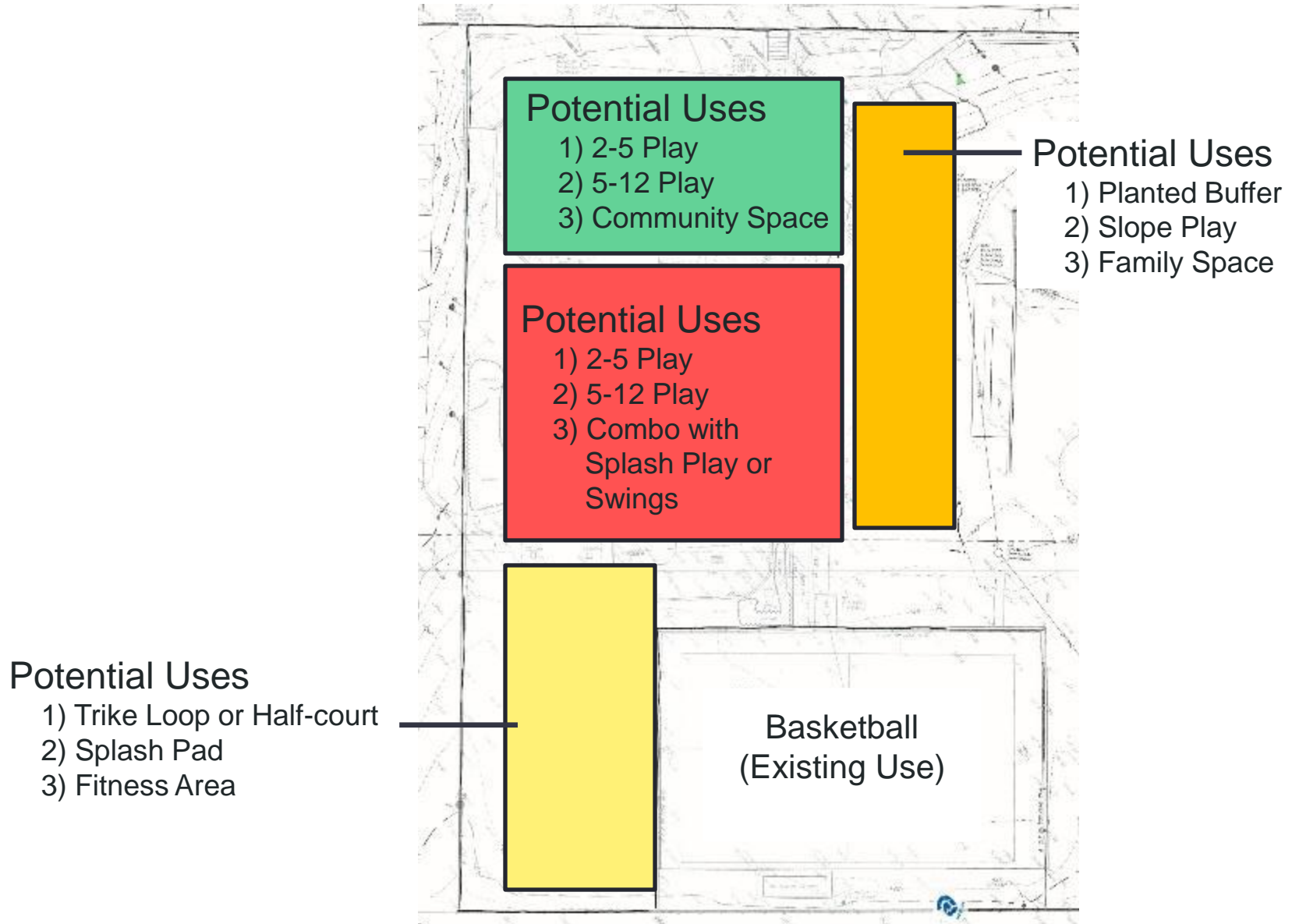


Paving – 17%
 Planting – 33%
 Play areas – 38.5%
 2-5 – 12.5%
 5-12/Swings – 23%
 Splash – 3%
 Adult Fitness – 8.5%
 Shade/Picnic – 3%



Paving – 15%
 Planting – 24.5%
 Play areas – 53%
 2-5 – 15%
 5-12 – 17%
 Splash – 10%
 Slide Mound – 11%
 Adult Fitness – 2%
 Shade/Picnic – 4.5%

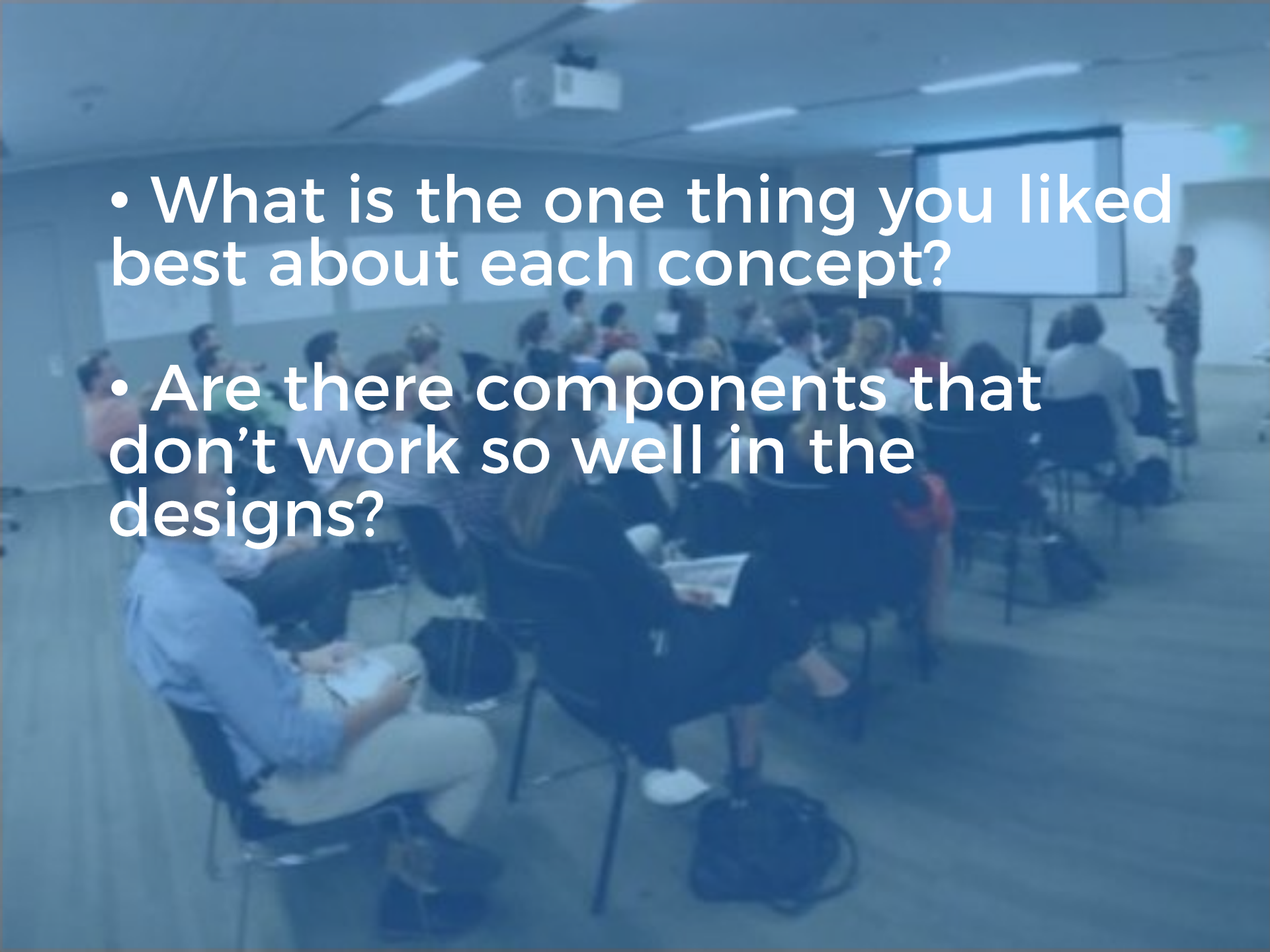
Potential Use Diagram





LISTENING & DISCUSSION

Help us build great parks by providing input on what matters to you.

- 
- A blurred photograph of a classroom or lecture hall. Students are seated in rows, facing a front of the room where a presenter is standing near a large screen. The image has a blue tint and is overlaid with white text.
- What is the one thing you liked best about each concept?
 - Are there components that don't work so well in the designs?



THANK YOU!

Nathan Frazee, Project Manager
nathan.frazee@boston.gov or 617-961-3167

Marchelle Jacques-Yarde, Outreach Coordinator, External Affairs
marchelle.jacques-yarde@boston.gov or 617-961-3006

Alexandra Valdez, Office of Neighborhood Services
alexandra.valdez@boston.gov or 617-635-2185

For questions, maintenance requests or concerns regarding any of our parks
contact 311

