

An aerial photograph of Reservation Road Park in Boston. The park is outlined in white and contains a large green field, a smaller brown field, and a parking lot. Surrounding streets include Reservation Rd, Business St, Hyde Park Ave, Winter St, Allen St, Mason St, Glenwood Ave, Dacy St, Grantley, and Hyde Park Ave. The Mather Brook is visible on the left side. The text 'Improvements to RESERVATION ROAD PARK' is overlaid in the top right.

Improvements to **RESERVATION ROAD PARK**

May 8, 2018

Boston Parks and Recreation



AGENDA

1

PROJECT TEAM INTRODUCTION

2

PROJECT OVERVIEW

3

PRESENTATION

4

LISTENING & DISCUSSION

5

CLOSING REMARKS & NEXT STEPS

PROJECT TEAM

Lauren Bryant

Project Manager

lauren.bryant@boston.gov or 617-961-3019

Marchelle Jacques-Yarde

Outreach Coordinator, External Affairs

marchelle.jacques-yarde@boston.gov or 617-961-3006

Stantec Planning & Landscape Architecture

Kevin Beuttell, Project Manager

Kanten Russell, Action Sport Designer

Josh Atkinson, Sport Designer

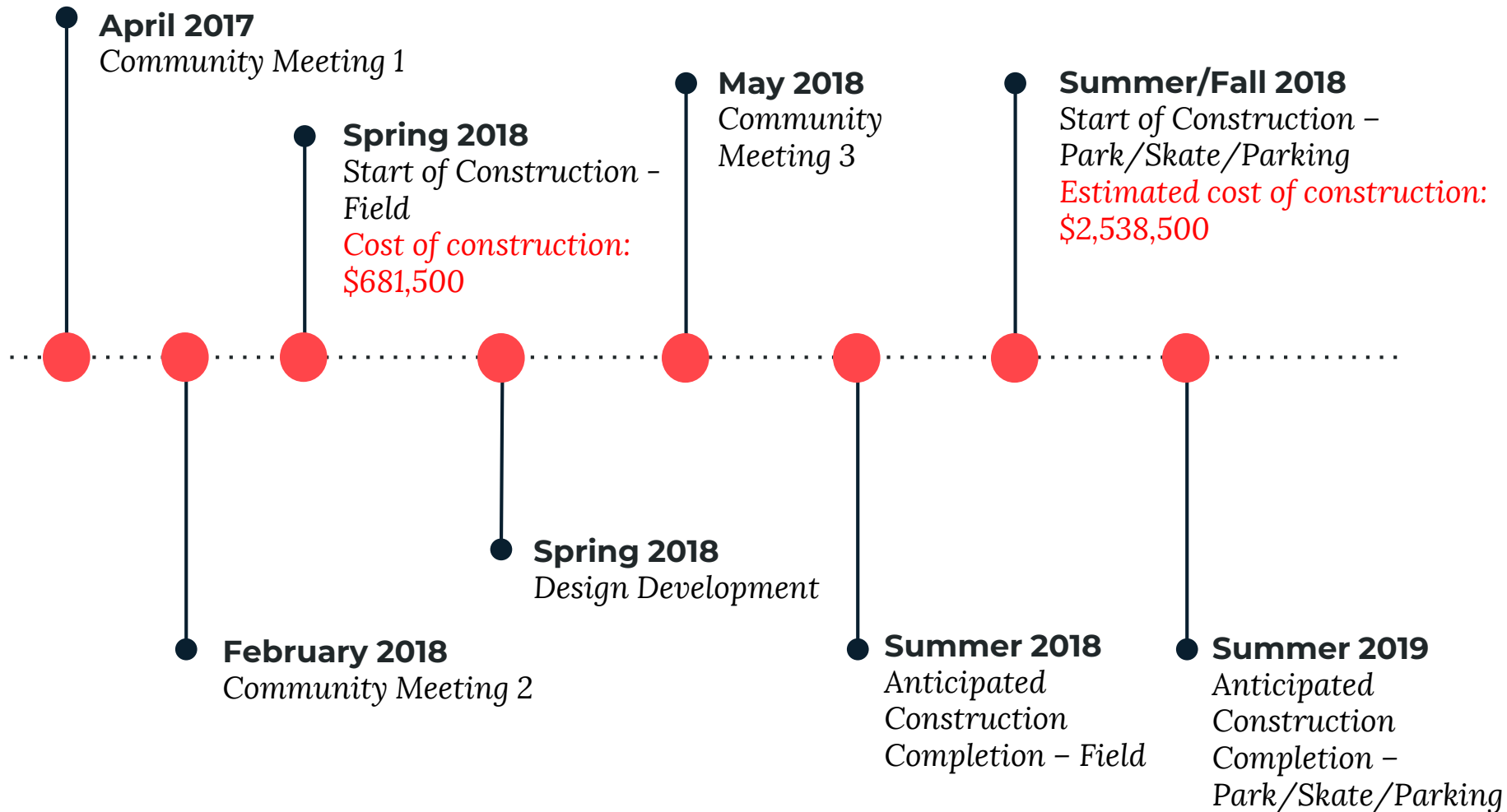
Bryan Flynn

Office of Neighborhood Services

bryan.flynn@boston.gov



PROJECT SCHEDULE & FUNDING



Phase 1 Construction

spring 2018 start



Phase 2 Construction

summer/fall 2018 start



PROJECT OVERVIEW



Existing Conditions























1st Community Meeting



USER SURVEY



6) What do you consider to be your skill level?

- Beginner
- Intermediate
- Advanced

- 7) Which location?
- Street
- Trail
- 8) Where?

- 9) Which time of day?
- Light
- Bench
- Trash
- Paved
- Shade
- Bus A
- Park
- Other

- 10) What facility?
- Street 2
- Street 5
- Pool C

- 11) Why?
- Hang
- Street
- Flat B
- Dunes
- Dunes
- Bank
- Fun B
- Kick



1) What time of day do you skate, and for how long?
Wednesday 4-5 hrs

2) What Neighborhood/City do you live in?
Milton

3) Do you anticipate using all of Reservation Road Park, or just the skatepark facility?
absolutely

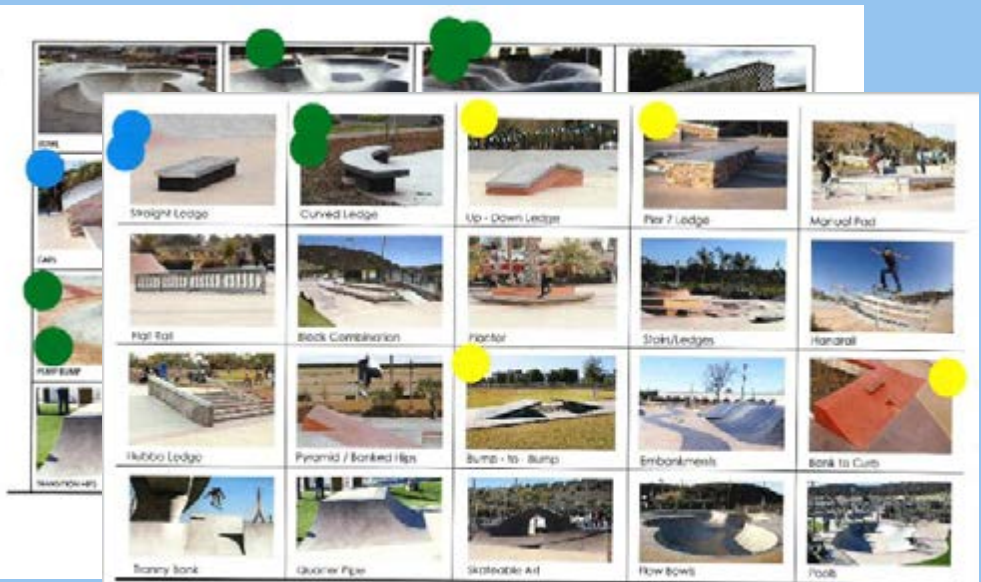
4) How do you/would you commute to the skatepark facility?

- Bus
- Car
- Walk
- Bicyclist
- Uber
- Other

5) How many times a week do you skate?

- 1-3 times
- 4-6 times
- More than 6

PREFERRED FEATURES




Skatepark / Skateplaza Features, Terrain & Skateable Art



1700 South Broadway, Suite 2000
Denver, CO 80202

User Discussion

Design Input Meeting 1

- 
- Provide access to Mother Brook for fishing access, and allow community to hold clean-up events to remove trash from the brook and its banks.
 - Design the park to appeal to a wide age range (give kids and parents the ability to play simultaneously in different areas of the park).
 - Skatepark: Replace the asphalt with concrete features with smoother and safer transitions
 - Skatepark: Incorporate a combination of street and transition features, similar to the existing skatepark layout
 - Skatepark: keep this and surrounding areas pedestrian friendly and accessible
 - Skatepark: maintain a similar footprint in order to save cost on site infrastructure
 - Skatepark: design to appeal to a wide age and skill range

Survey Data

Design Input Meeting 1

Lives in...

Roxbury

Milton

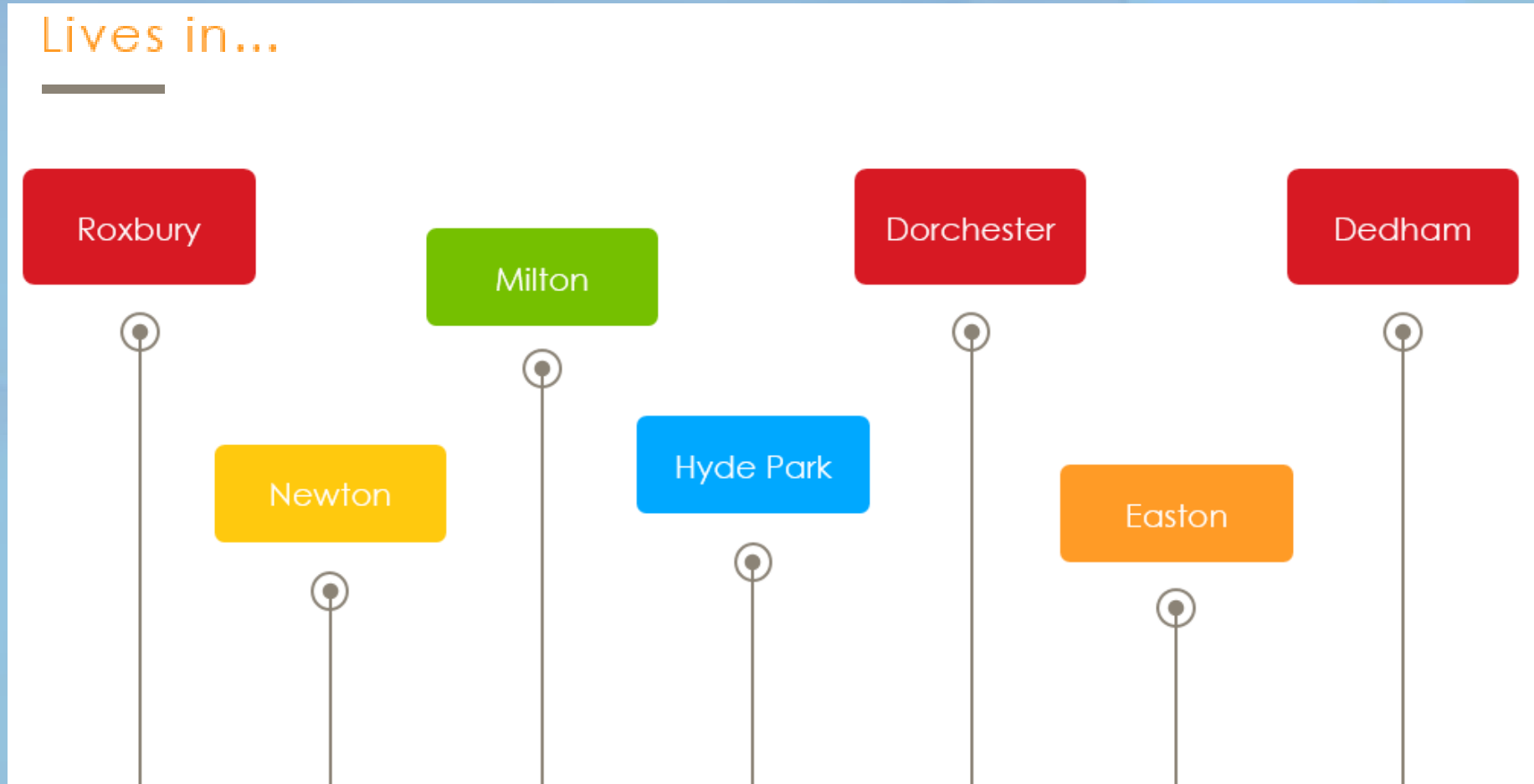
Dorchester

Dedham

Newton

Hyde Park

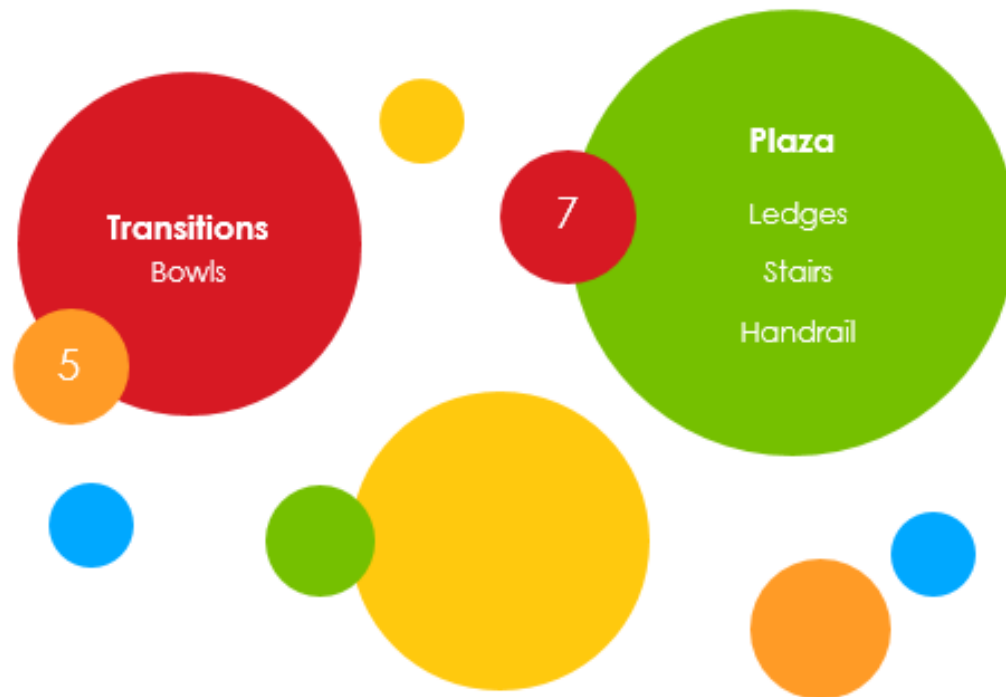
Easton



Survey Data

Design Input Meeting 1

Interested in...



Survey Data

Design Input Meeting 1

Skill Level

Beginner or
Intermediate



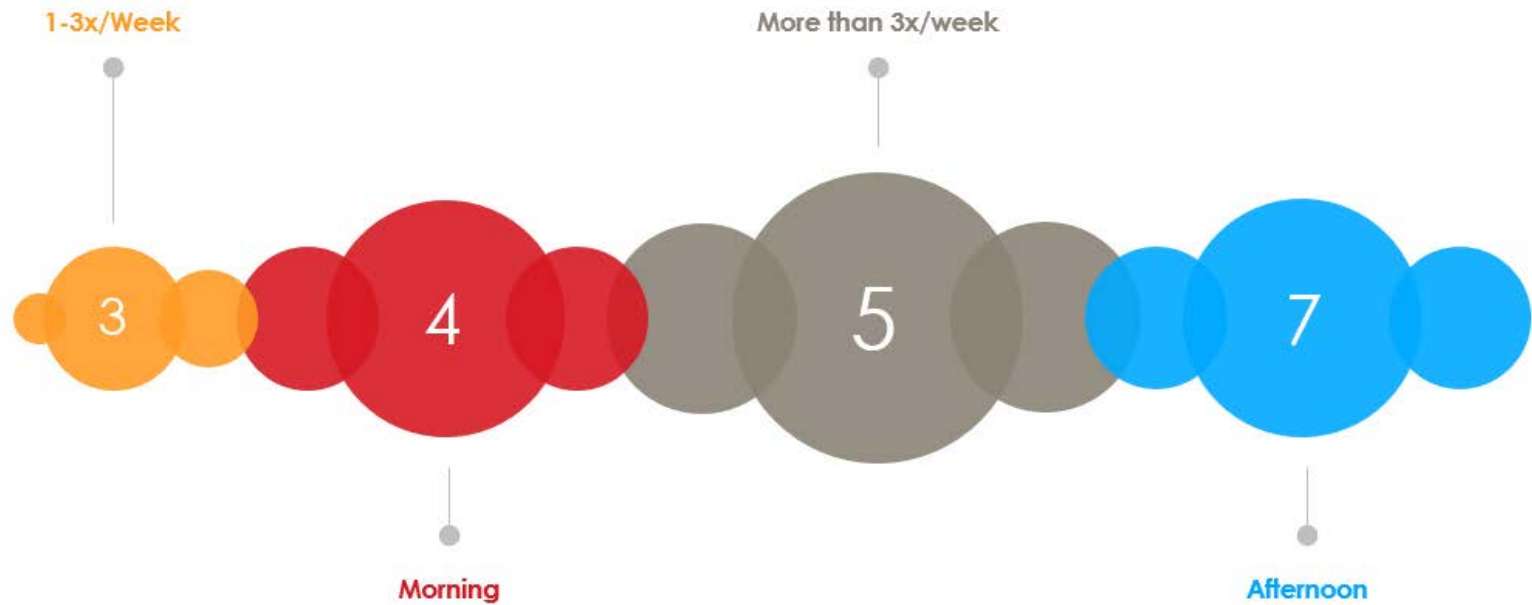
Advanced



Survey Data

Design Input Meeting 1

Practice Times



An aerial photograph of a residential neighborhood, overlaid with a semi-transparent blue filter. A large, bright blue rectangular area is highlighted in the upper-middle section of the image, likely indicating a site for development. The surrounding area shows a mix of residential buildings, streets, and greenery.

2nd Community Meeting

Preliminary design concepts



Phase 2 – Skate Park Concept A

summer/fall 2018 start



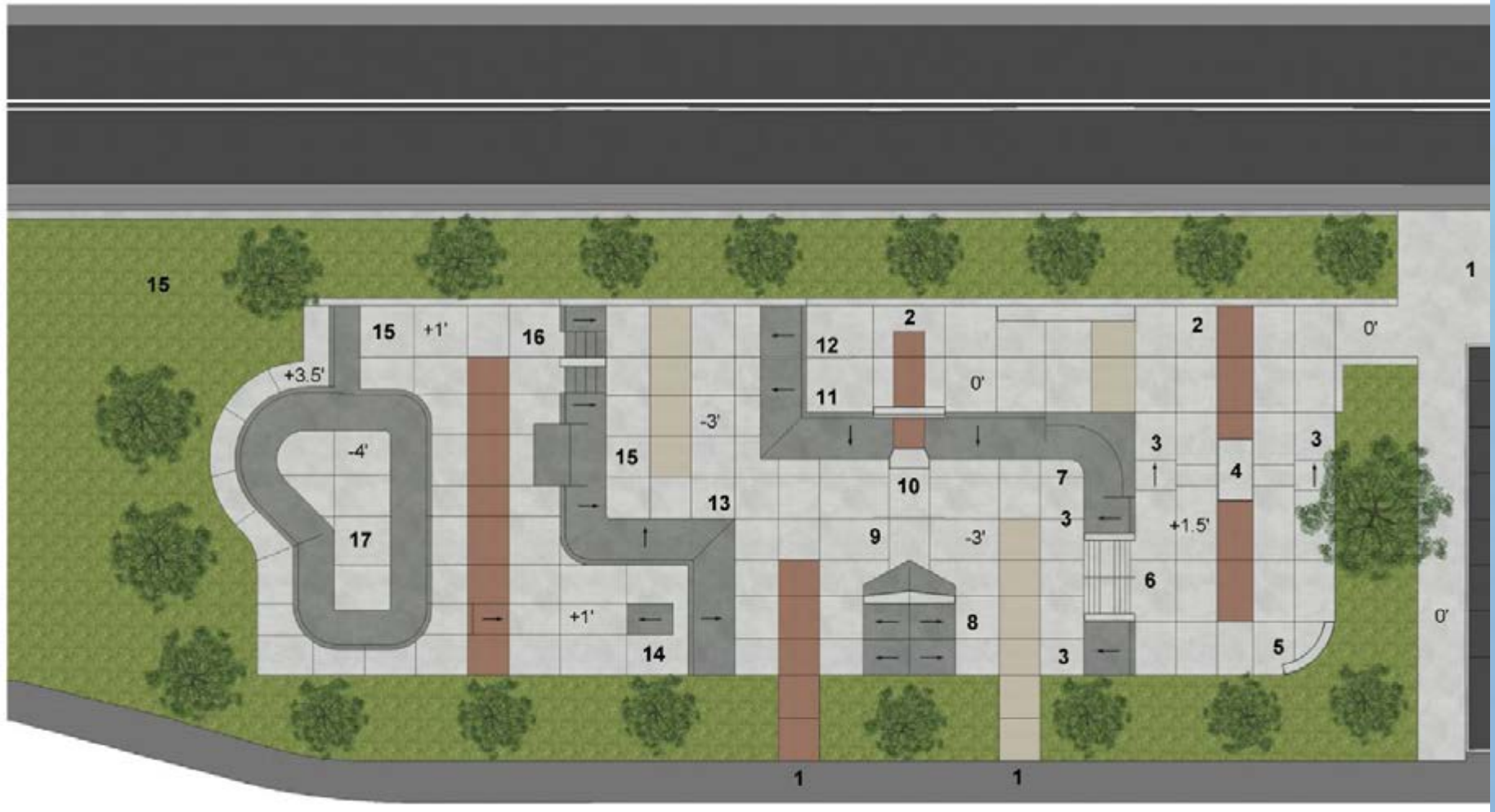
Phase 2 – Skate Park Concept B

summer/fall 2018 start



Phase 2 – Skate Park Concept C

summer/fall 2018 start



Phase 2 – Skate Park Concept D

summer/fall 2018 start



3rd Community Meeting

Final design





Phase 1 – Athletic Field

under construction



Phase 2 – Park & Pathway

summer/fall 2018 start



pathways

picnic tables

potential shade structure

overlook

Athletic field:
lighting
team areas
spectator seating

Phase 2 – Park & Pathway

summer/fall 2018 start



wood boardwalk with overlook

Phase 2 – Park & Pathway

summer/fall 2018 start



asphalt & stone pathways

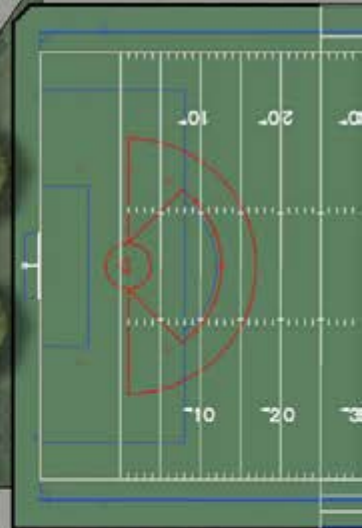
Phase 2 – Parking

summer/fall 2018 start

potential for porous pavement
and rain gardens

skatepark

additional trees



Phase 2 – Park & Pathway

summer / fall 2018 start

wood boardwalk
with overlook

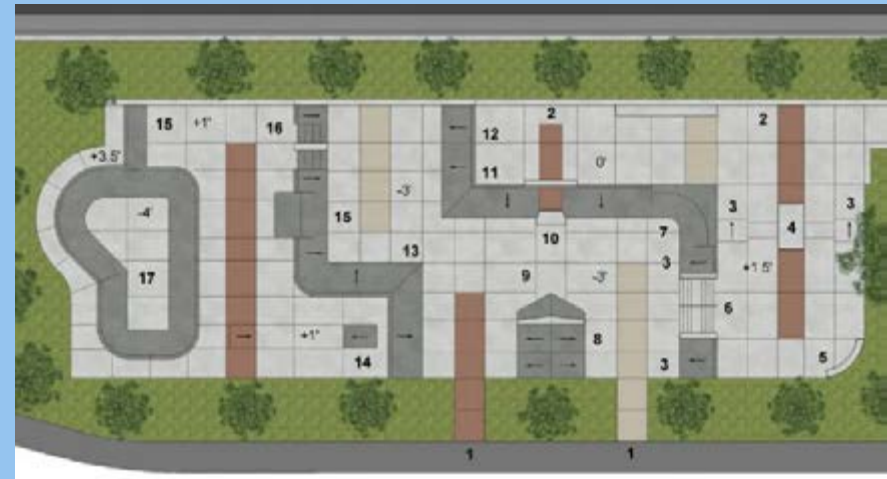
potential for new
street crossing

pathways



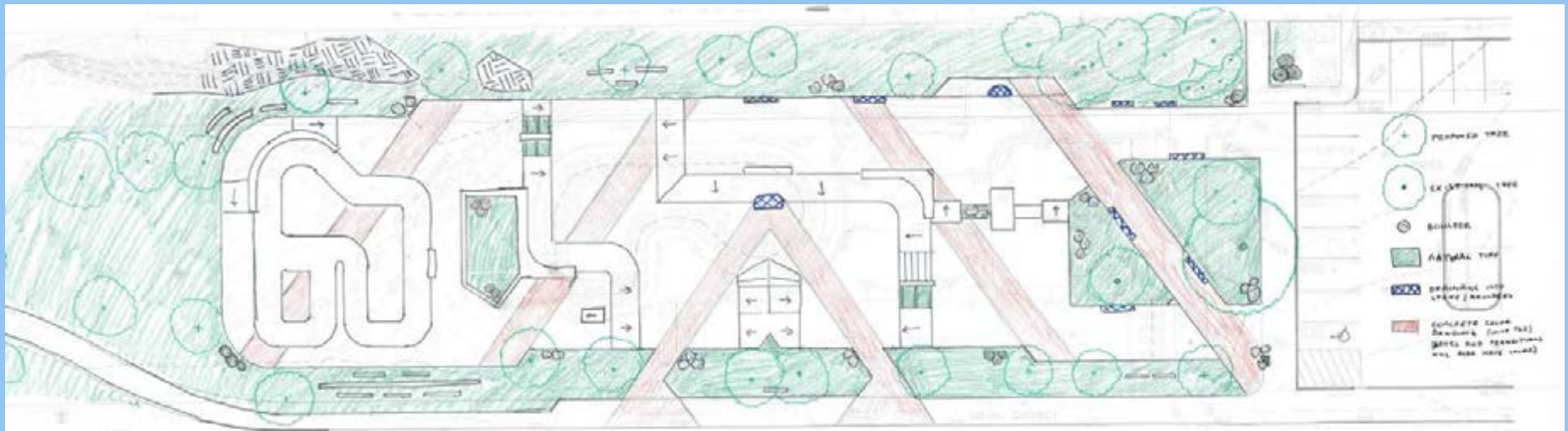
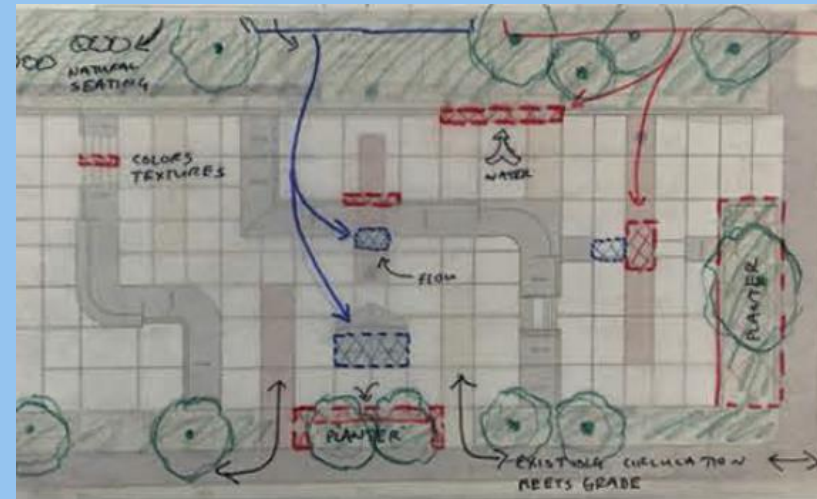
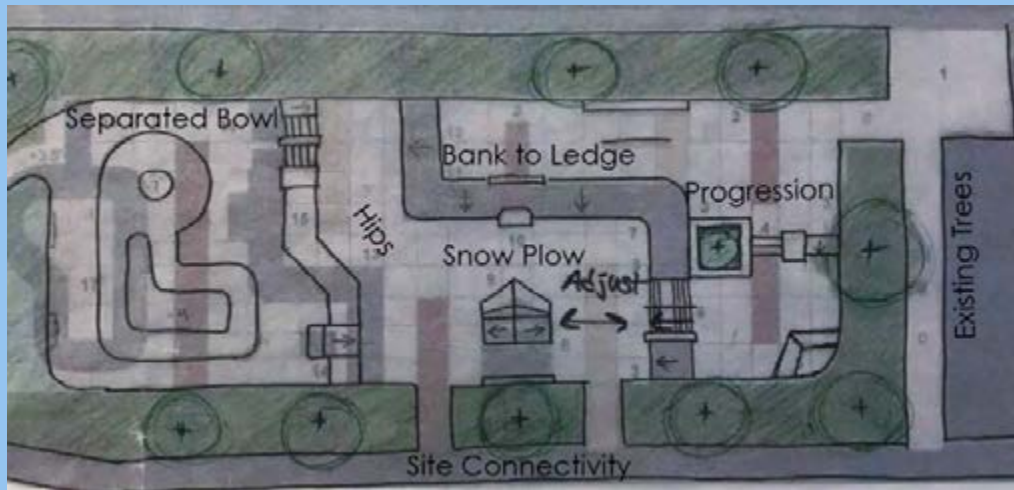
Phase 2 – Concept Development

Meeting 2 Concepts



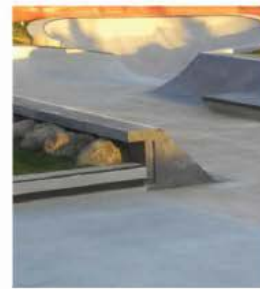
Phase 2 – Concept Development

Final Concept Development



Phase 2 – Concept Development

Site Integration



Phase 2 – Final Schematic Concept

3D Rendering, Overview



Phase 2 – Final Schematic Concept

Plan Rendering



Phase 2 – Final Schematic Concept

3D Rendering, Plaza Entrance



Phase 2 – Final Schematic Concept

3D Rendering, Plaza Entrance



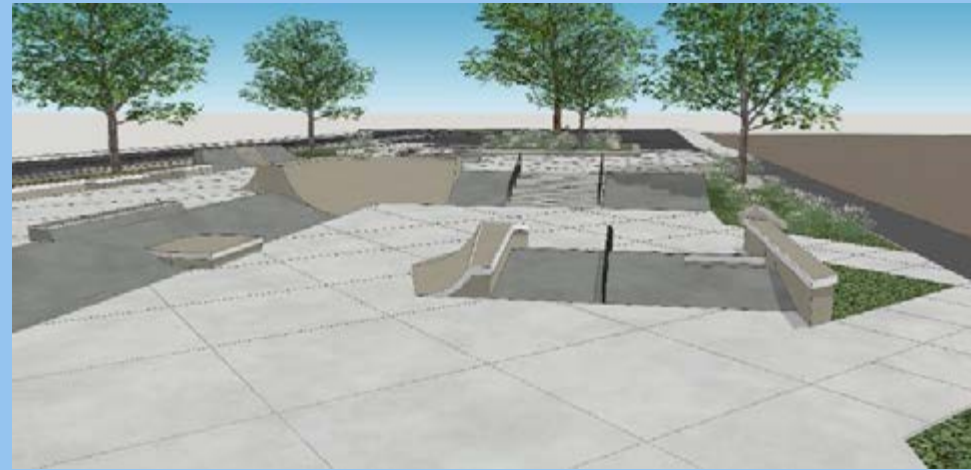
Phase 2 – Final Schematic Concept

3D Rendering, Bowl Area



Phase 2 – Final Schematic Concept

3D Rendering, Ground Level Views



Phase 2 – Final Schematic Concept

3D Rendering, Ground Level Views



THANK YOU!

For questions, maintenance requests or concerns regarding any of our parks contact 311





City of Boston
Priorities

Safety Guidelines+
Regulatory
Guidelines

**PARK
DESIGN**

Parks + Recreation
Goals

Community
Input

CITY OF BOSTON PRIORITIES

- **Expanding walkable access to parks**
- **Addressing equity**
- **Climate resilience**
- **Health**
- **Housing and community building**



PARK & RECREATION GOALS

- **Preserve And Protect Existing Trees**
- **Expand Usable Park Area**
- **Improve Universal Access**
- **Enhance Park Visibility**
- **Improve Access to Parks**
- **Design Flexible, Multi-functional Park Spaces**

