

MARTIN'S PARK: CONSTRUCTION UPDATE- December 21, 2018

This Martin's Park update will fill you in what has been happening on site since the November 16th update and what to look forward to over the winter. There has been a significant amount of exciting progress this month so I have included more photos than usual, including some progress pictures from past updates.

Some of what has been done in the last month:

On the north side of the park (closest to Seaport Blvd.):

- MacKay decorated the play ship for the holidays!
- The installed geofoam was wrapped in filter fabric.
- Soils were placed around the ship.
- Pathway sub-base was installed
- Form work for concrete retaining wall along central pathway.
- Locust post foundations poured and several locust posts installed.

On the south side of the park (closest to the Children's Museum):

- The water proofing on the covered garage is complete.
- Drainage board for the covered garage is complete.
- The amphitheater concrete footings and substructure were poured.
- The radius wall surrounding the net climber was poured and geofoam installed surrounding.
- The mud slab under the south geofoam was poured.
- Geofoam installation on the south side is almost complete.
- Shade structure foundations poured.

General park:

- Granite deliveries have begun. Approximately 1/3 of the stone has been delivered to the site or the laydown area.
- Site electrical, including light pole foundations.
- Site drainage work.

Here is what to look for over the winter:

Due to the unseasonably wet fall, planting will occur in the spring, however additional park work will continue through the winter as weather allows.

On the north side of the park (closest to Seaport Blvd.):

- The central retaining wall will be poured.
- Stepper stone installation will begin.
- More locust posts will be installed.
- Concrete pathways will be poured as weather allows.

On the south side of the park (closest to the Children's Museum):

- Geofoam installation will be completed.
- Foundation work on the roof for play structures will continue.

General park:

- Granite deliveries will continue.
- Fabrication of metal work.



MackKay holiday decorations!



Sub-base for future pathway to play ship



Granite on site

As always, please feel free to reach out for any questions or comments. Lauren.Bryant@boston.gov



NORTH SIDE



Gofoam wrapped in filter fabric



10/15/18- mud slab for geofabric



Soil installed over geofabric



12/7/18- geofabric, filter fabric, soil

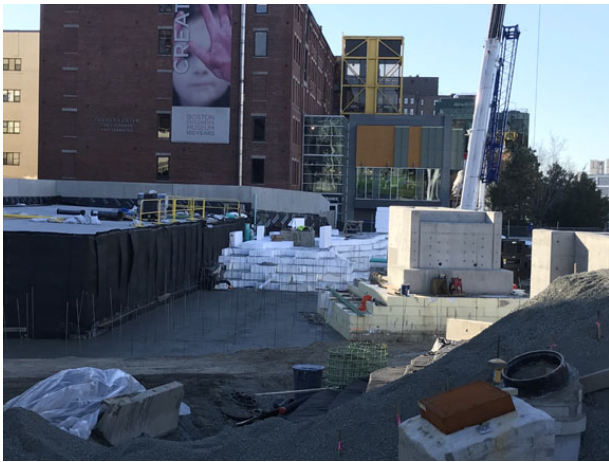


Locust post installation



Future pedestrian bridge

SOUTH SIDE



12/7/18- concrete mud mat poured



11/18/18- formwork for amphitheater



12/13/18- geofabric installation over mudmat

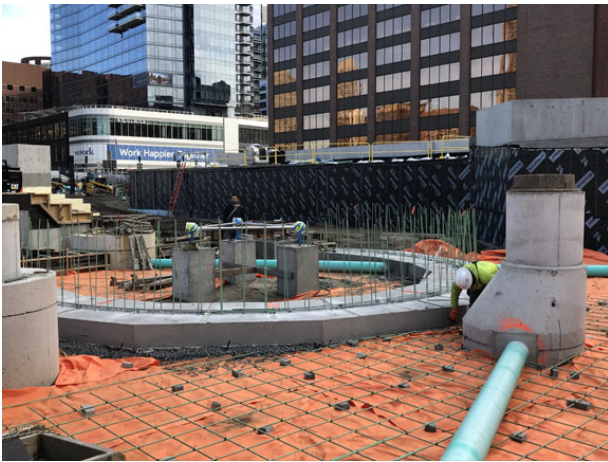


11/28/18- concrete foundation for amphitheater



Future pathway to the top of the covered parking roof play area

SOUTH SIDE



11/8/18- foundation and rebar for retaining wall



11/21/18- formwork for circular wall pour



11/28/18- circular concrete retaining wall



12/20/18- geofoam on back side of circular retaining wall