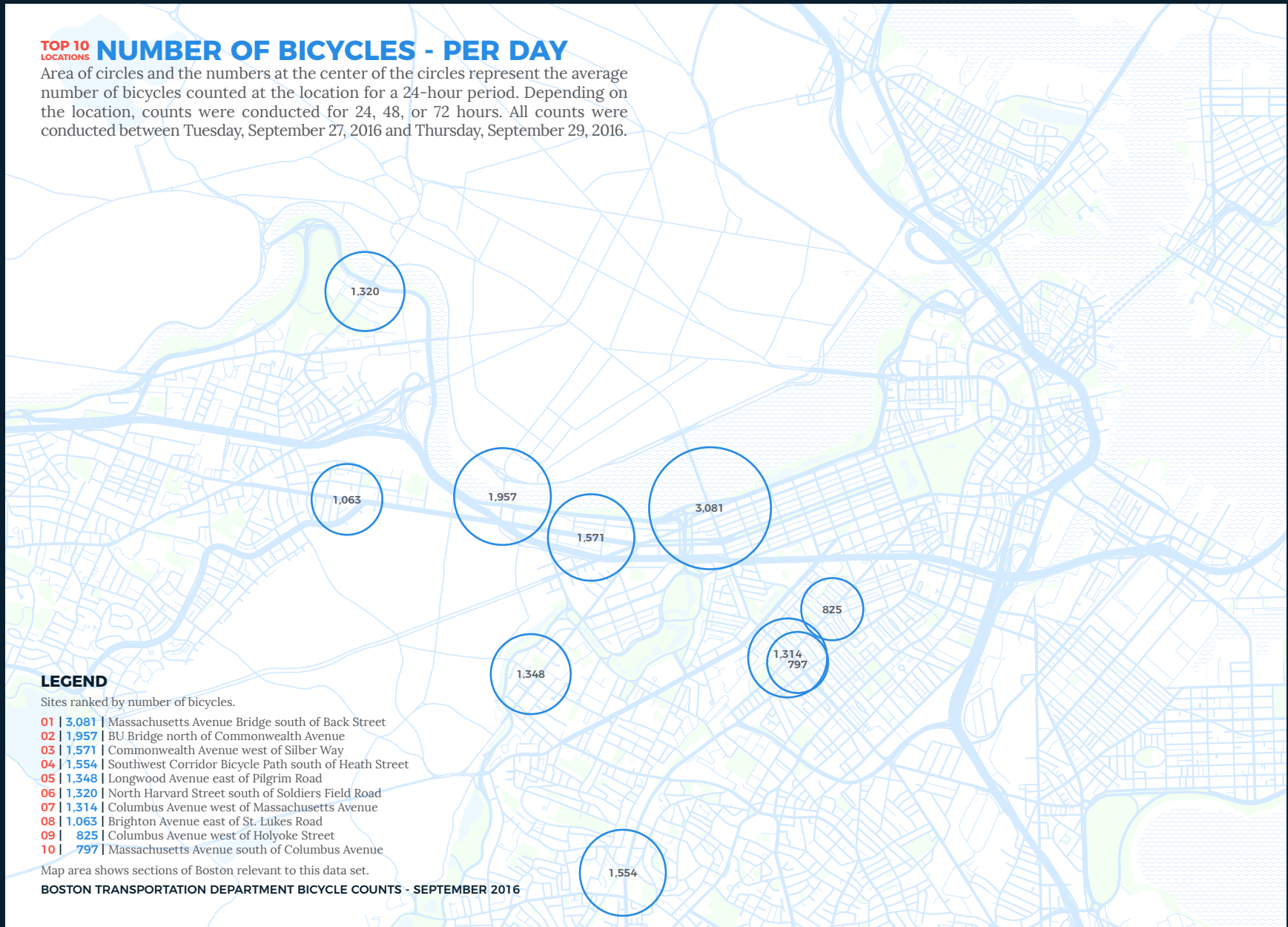


## TOP 10 LOCATIONS NUMBER OF BICYCLES - PER DAY

Area of circles and the numbers at the center of the circles represent the average number of bicycles counted at the location for a 24-hour period. Depending on the location, counts were conducted for 24, 48, or 72 hours. All counts were conducted between Tuesday, September 27, 2016 and Thursday, September 29, 2016.



### LEGEND

Sites ranked by number of bicycles.

- 01 | 3,081 | Massachusetts Avenue Bridge south of Back Street
- 02 | 1,957 | BU Bridge north of Commonwealth Avenue
- 03 | 1,571 | Commonwealth Avenue west of Silber Way
- 04 | 1,554 | Southwest Corridor Bicycle Path south of Heath Street
- 05 | 1,348 | Longwood Avenue east of Pilgrim Road
- 06 | 1,320 | North Harvard Street south of Soldiers Field Road
- 07 | 1,314 | Columbus Avenue west of Massachusetts Avenue
- 08 | 1,063 | Brighton Avenue east of St. Lukes Road
- 09 | 825 | Columbus Avenue west of Holyoke Street
- 10 | 797 | Massachusetts Avenue south of Columbus Avenue

Map area shows sections of Boston relevant to this data set.

BOSTON TRANSPORTATION DEPARTMENT BICYCLE COUNTS - SEPTEMBER 2016